



# Protecting Chicago: Phase IV Re-Opening Metrics Update

November 28, 2020

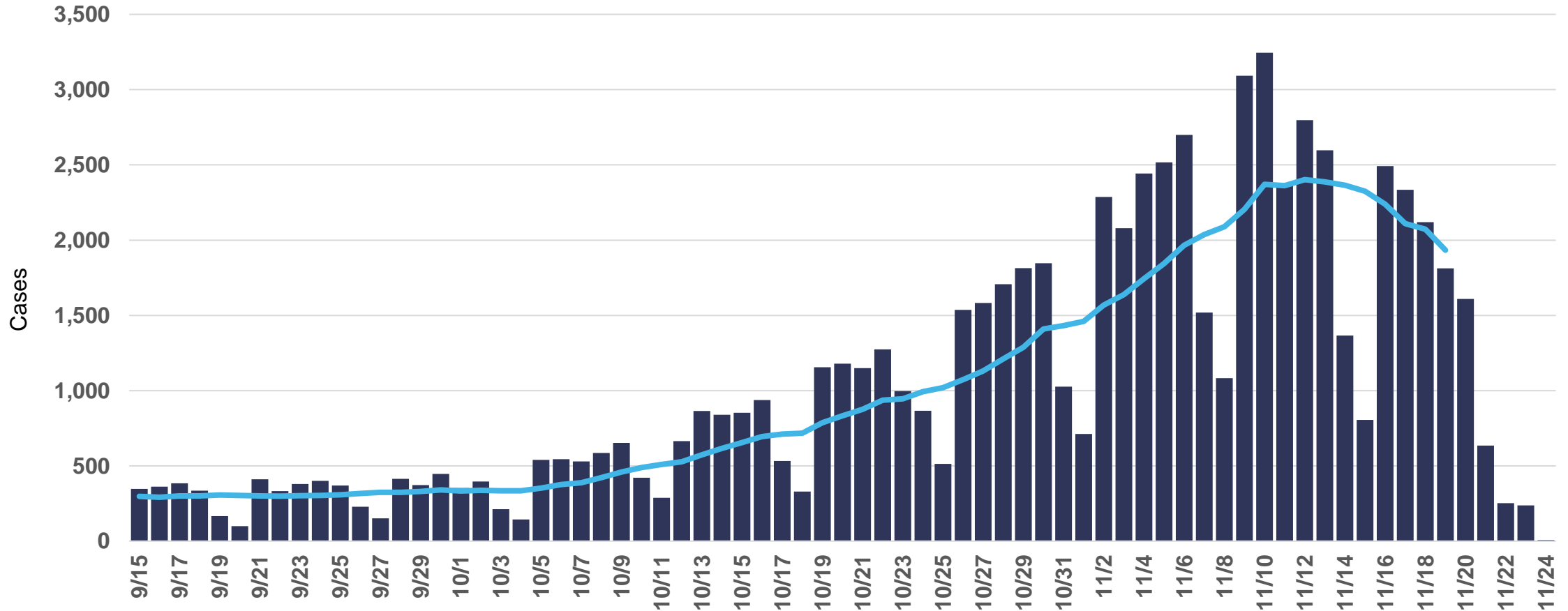


# COVID-19 Confirmed Cases

# COVID-19 case incidence reaches plateau on 10/11. Currently 6X greater incidence than late September.



COVID-19 cases, daily counts and rolling 7-day average, specimen

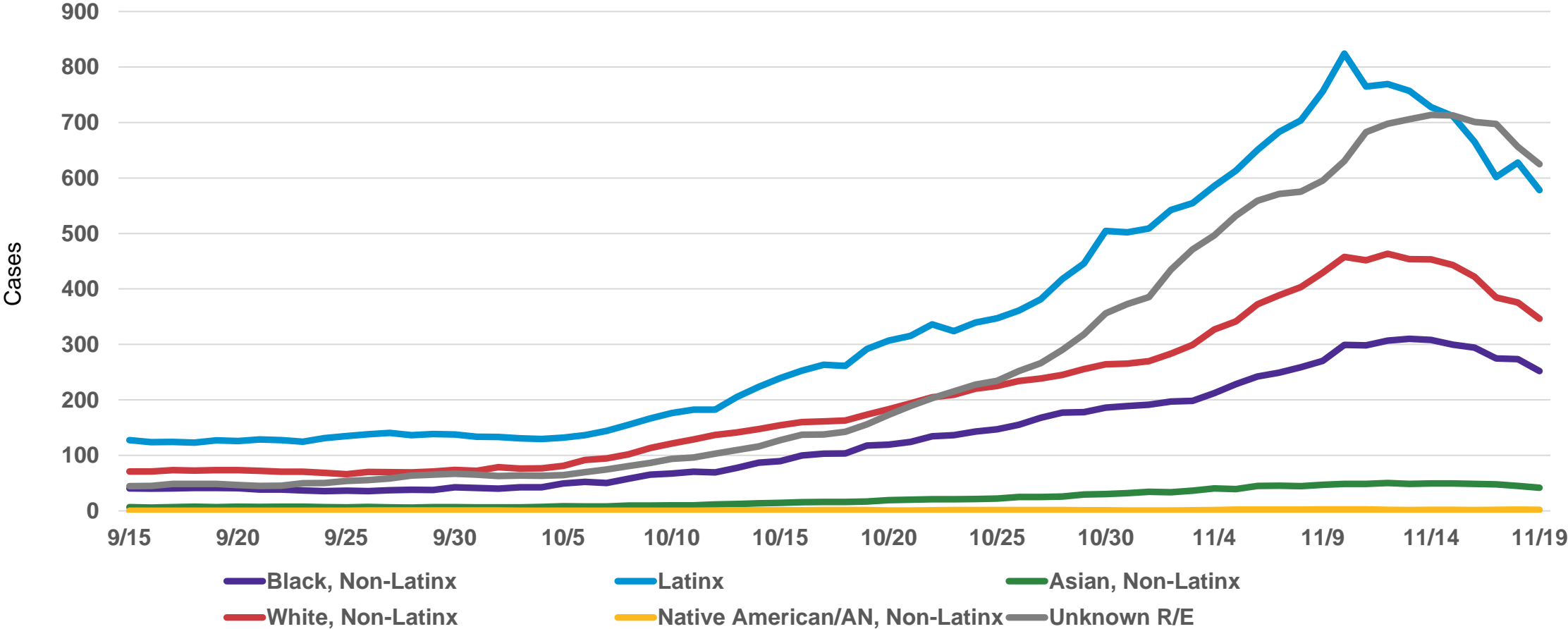


Daily COVID-19 cases with known specimen report date. \*14-day incidence is calculated by summing all new cases in the most recent 14-day period and dividing by 14 days to find an average daily count. Incidence gating rank is determined using 14-day cumulative incidence/100,000 population. The gating rank categories are defined as. LOW (1-10); MODERATELY LOW (11-25); MODERATE (26-50); MODERATELY HIGH (51-99); HIGH (100+) and presented as corresponding daily counts color-coded to gating category. Daily counts for most recent dates displayed are likely incomplete.

# COVID-19 case incidence by race/ethnicity



COVID-19 cases among Chicago residents by race/ethnicity, rolling 7-day average, specimen collection date



Daily COVID-19 cases with known specimen report date and race/ethnicity information. Approximately 30% of cases used to calculate 14-day incidence are missing race/ethnicity information, therefore the reported 14-day incidence represents an undercount of true incidence.

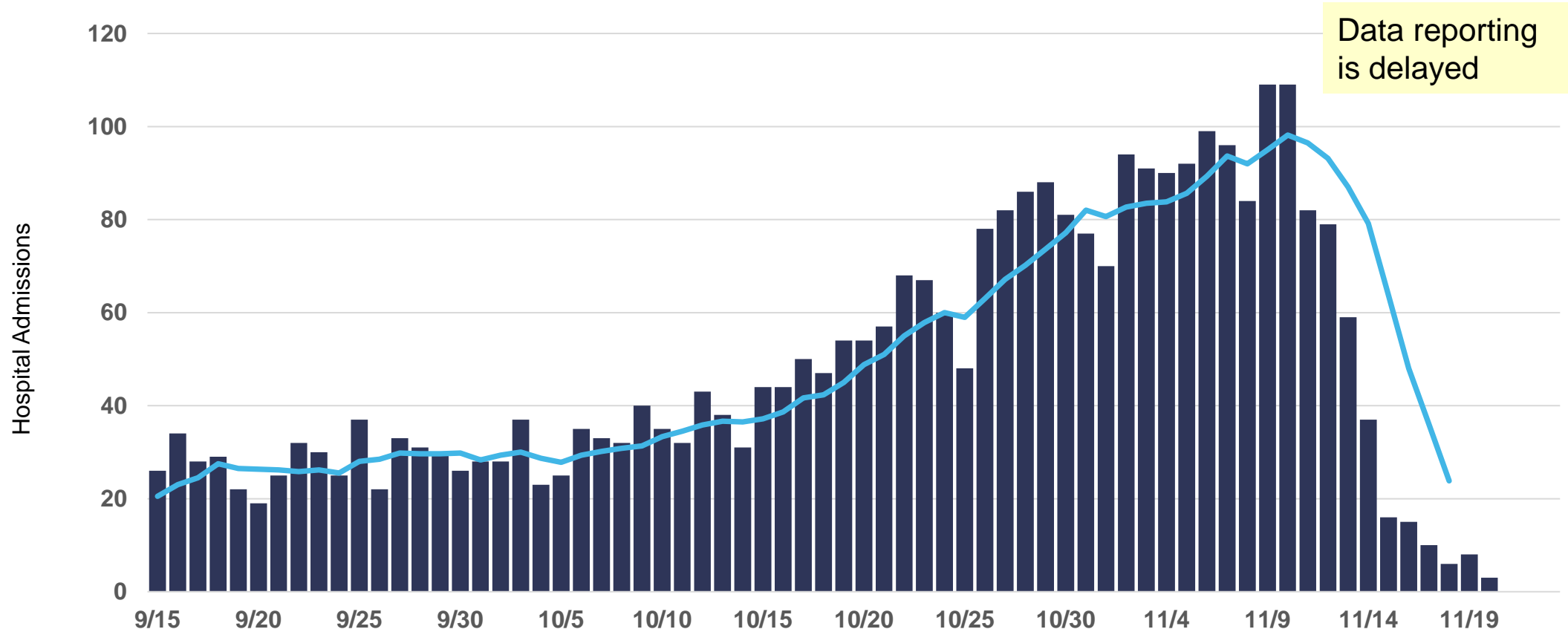


# COVID-19 Severe Outcomes

# Daily COVID-19 hospital admission is up 3.5X compared to 5 weeks prior.



COVID-19 Hospital admissions, daily counts and rolling 7-day average, first known hospital admit date



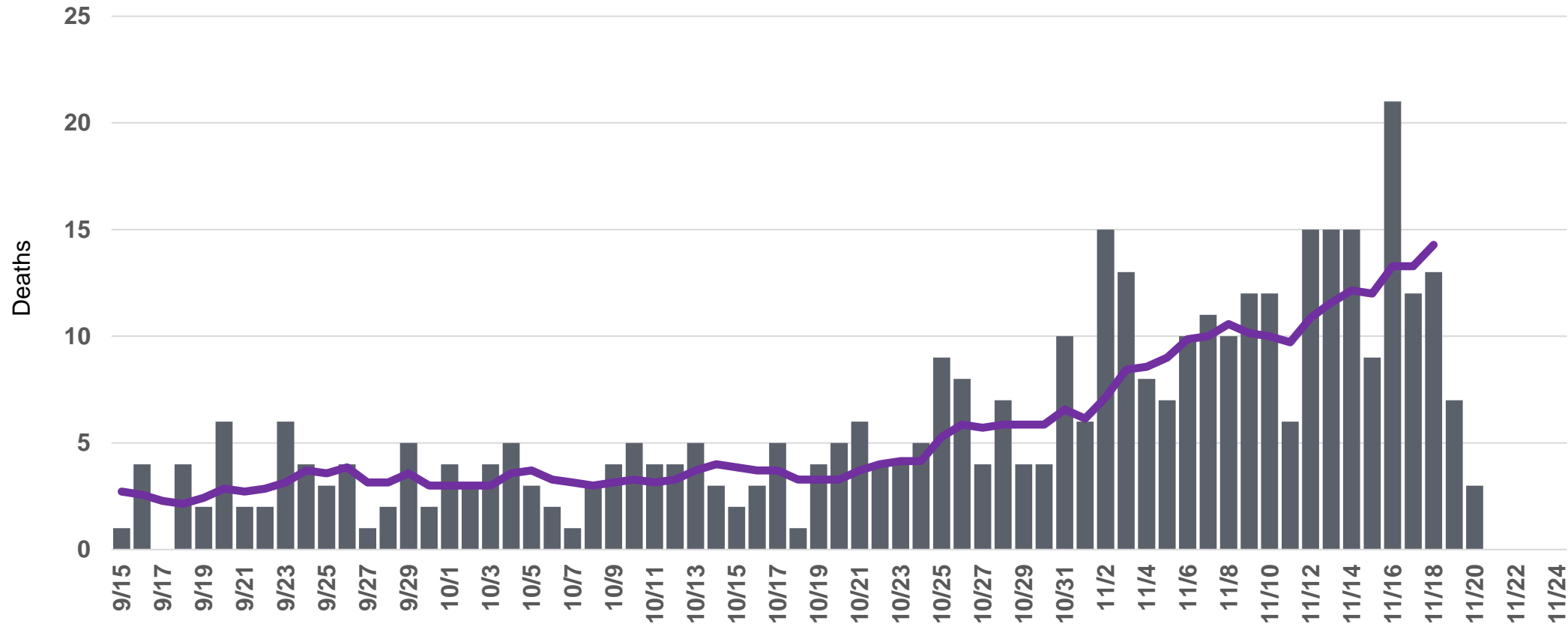
Hospitalizations are reported to CDPH by hospitals into I-NEDSS and ESSENCE and self-reported by patients via an online survey. Daily counts for most recent dates displayed are likely incomplete. Cases who are not indicated to have been hospitalized across any of the three data sources are assumed to not have been hospitalized. Six records with hospital admit dates from January and February 2020 are excluded from this chart. Peak daily admissions based on rolling 7-day average.

# COVID-19 deaths have risen 4X since 10/19. The peak has probably not been reached.



COVID-19 deaths, daily counts and rolling 7-day average, deceased date

Data reporting is delayed

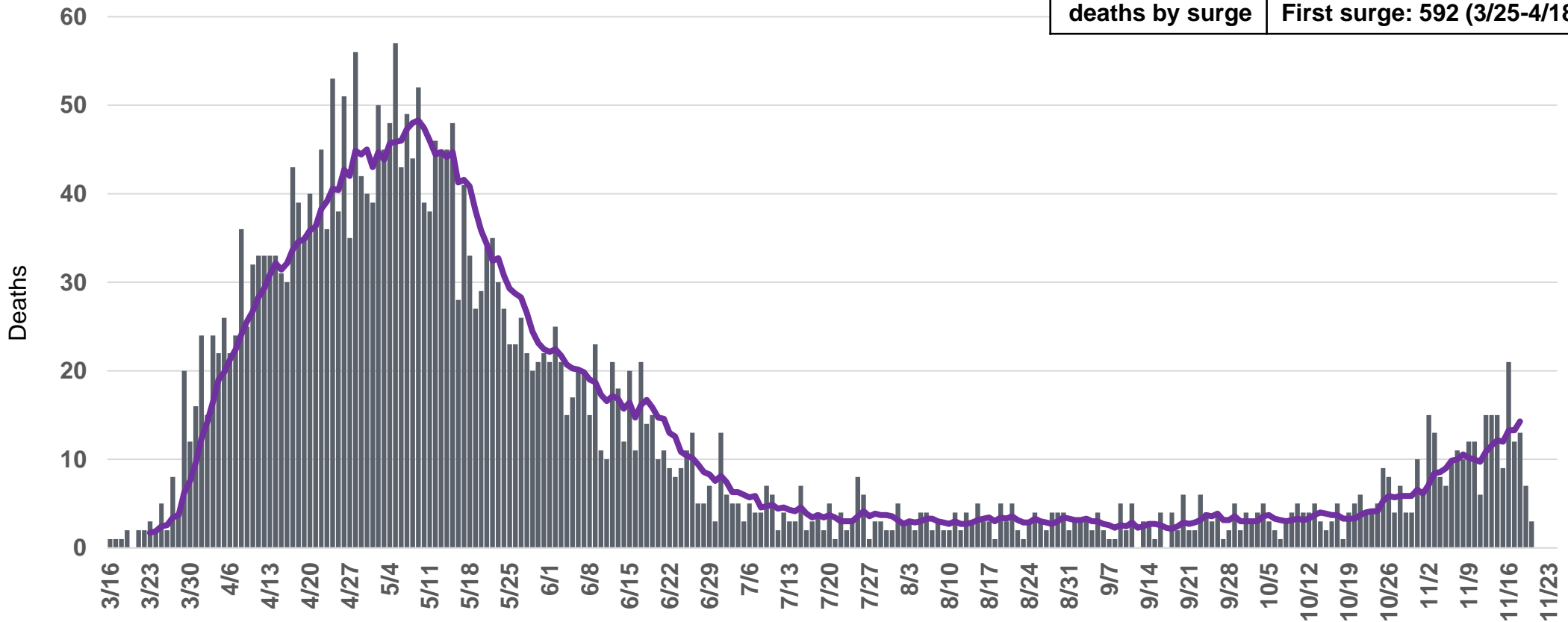


Daily COVID-19 deaths reported for Chicago residents with known death date. Data source: INEDSS. Daily counts for most recent dates displayed are likely incomplete.

# COVID-19 deaths are 3.5X fewer now when compared to the peak in May yet 4X greater than September.



COVID-19 deaths, daily counts and rolling 7-day average, deceased date



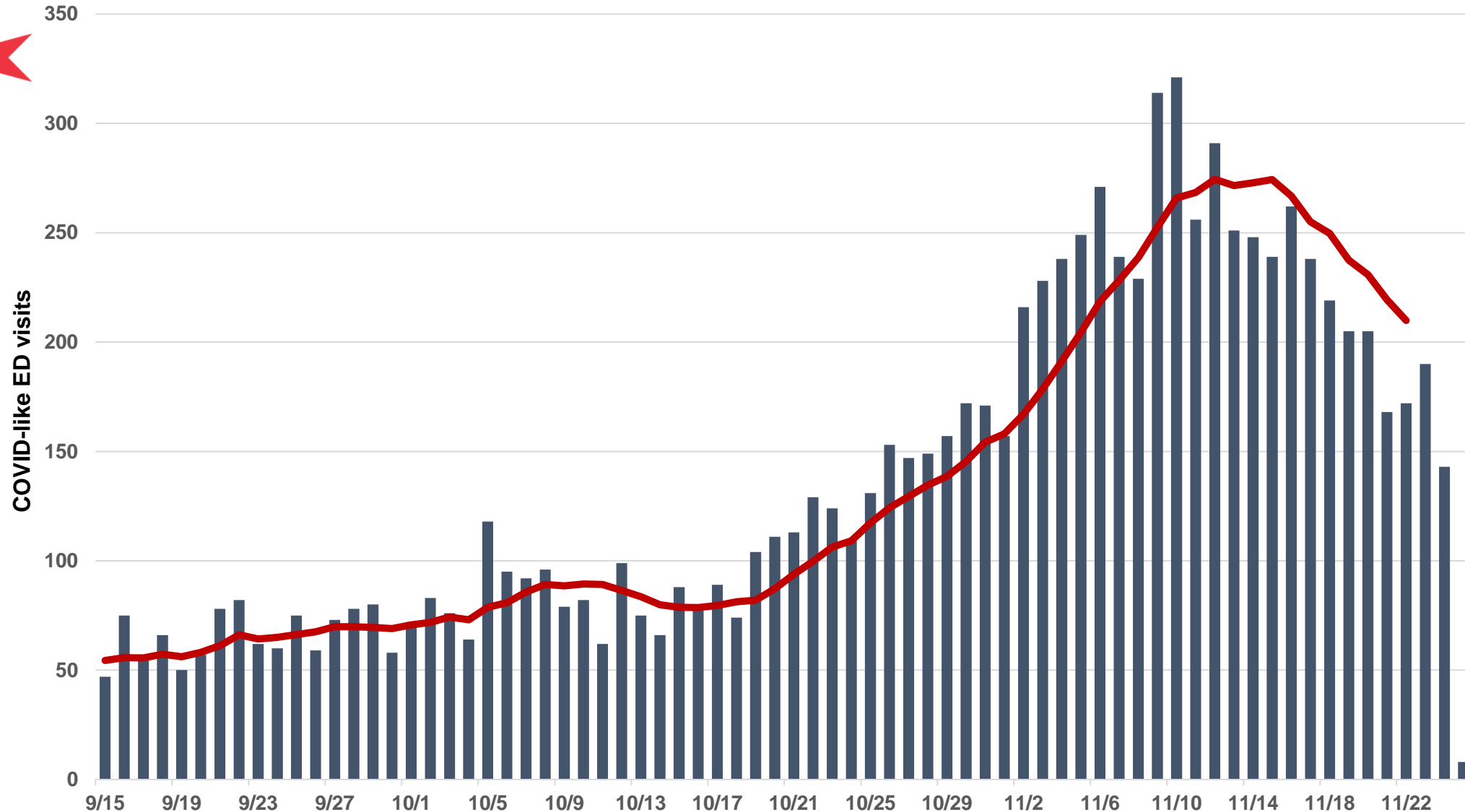
Daily COVID-19 deaths reported for Chicago residents with known death date. Data source: INEDSS. Daily counts for most recent dates displayed are likely incomplete.





# Emergency Department Visits

# ED visits for COVID-like illness has been decreasing 6 days after increasing for 25 days.

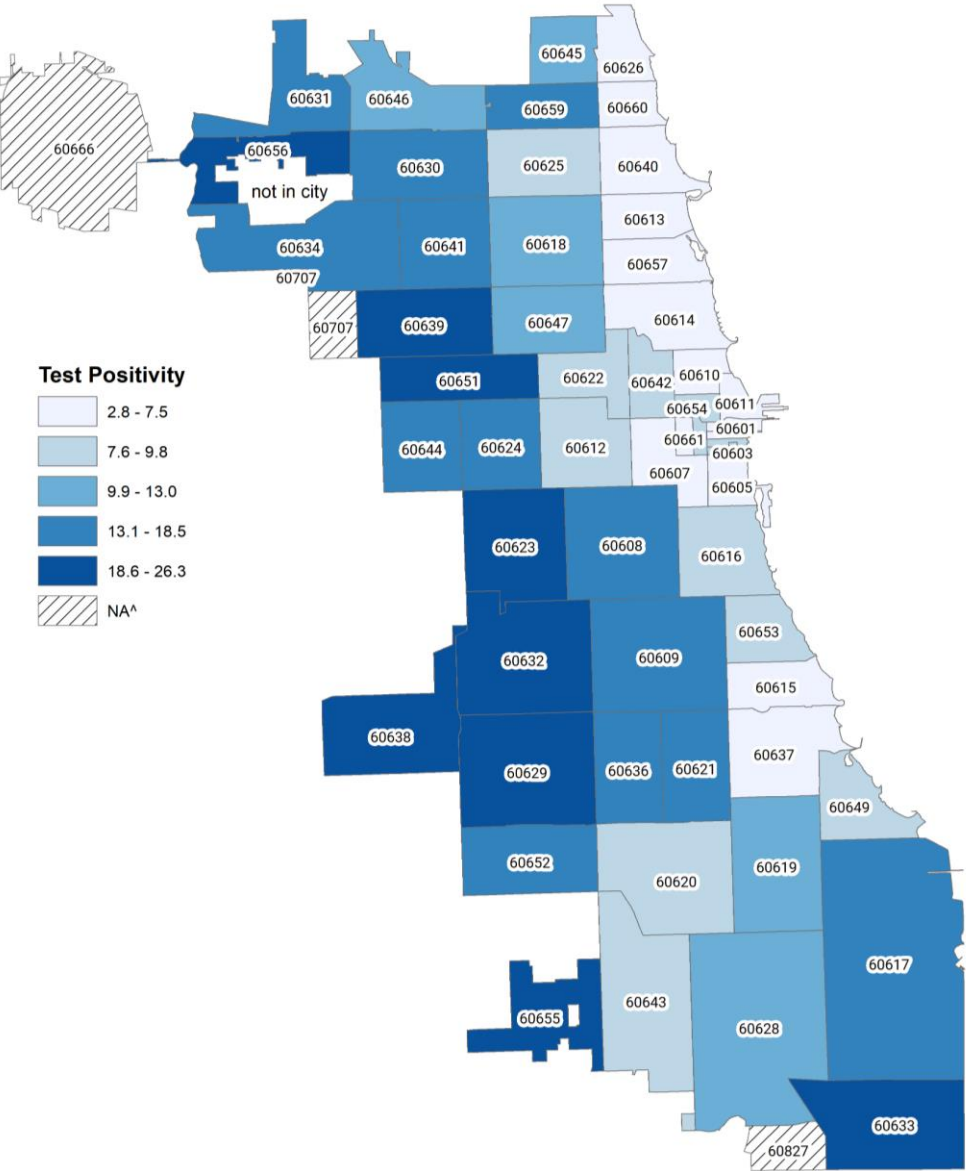


Percentage of all emergency department visits reported with COVID-like symptoms among Chicago residents.  
Data Source: Illinois Hospital Emergency Departments reporting to CDPH through the National Syndromic Surveillance Project.



# Test Positivity and Number Needed to Test

# COVID-19 Test Positivity by Chicago zip code Week ending Saturday November 21, 2020

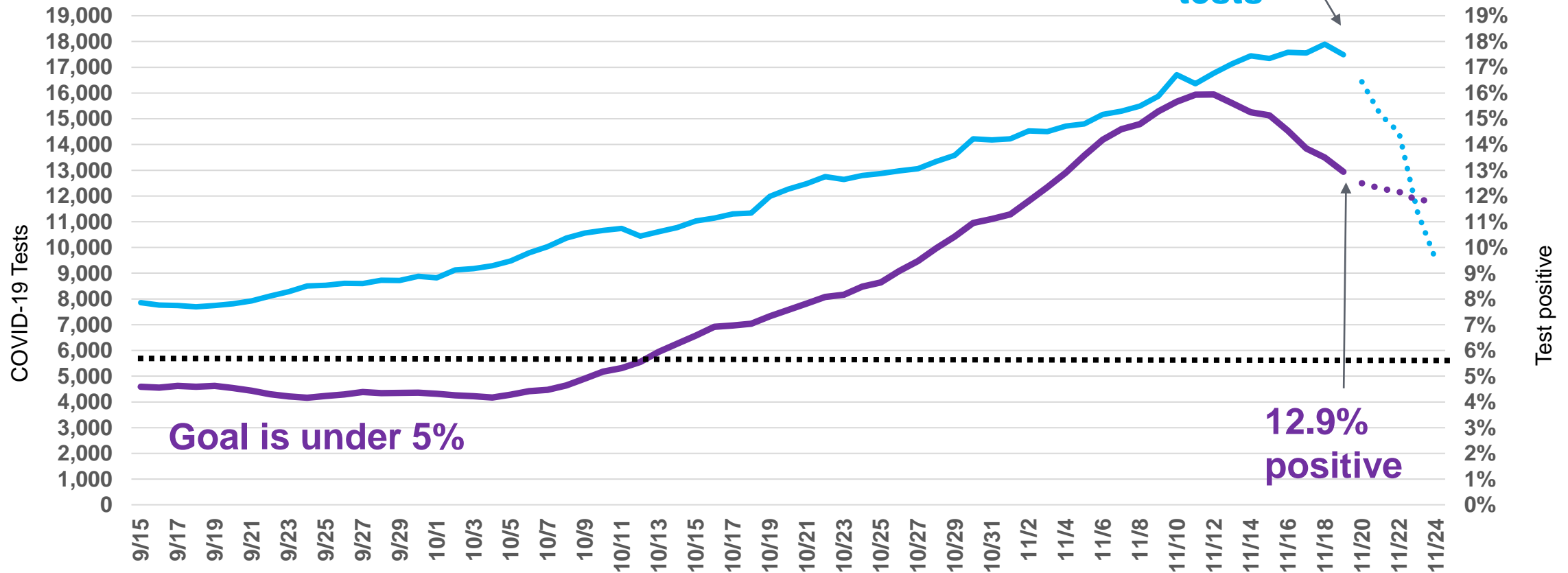


\*Zip code with no population, zip codes extend beyond Chicago boundary  
 Data Source: Providers reporting to CDPH through the Illinois National Electronic Disease Surveillance System

# Test positivity is 12.9%;



COVID-19 tests, 7-day rolling average for test positive (%) and for counts (one test per individual per day)



As of 7/30/2020, test positivity is being reported rather than percent positivity. Test positivity is the number of positive tests divided by all tests performed in contrast to percent positivity which is the number of individuals tested positive divided by the total number of individuals tested (Source: INEDSS). For positivity rates among demographic subgroups and zip codes CDPH will continue reporting by individuals tested.



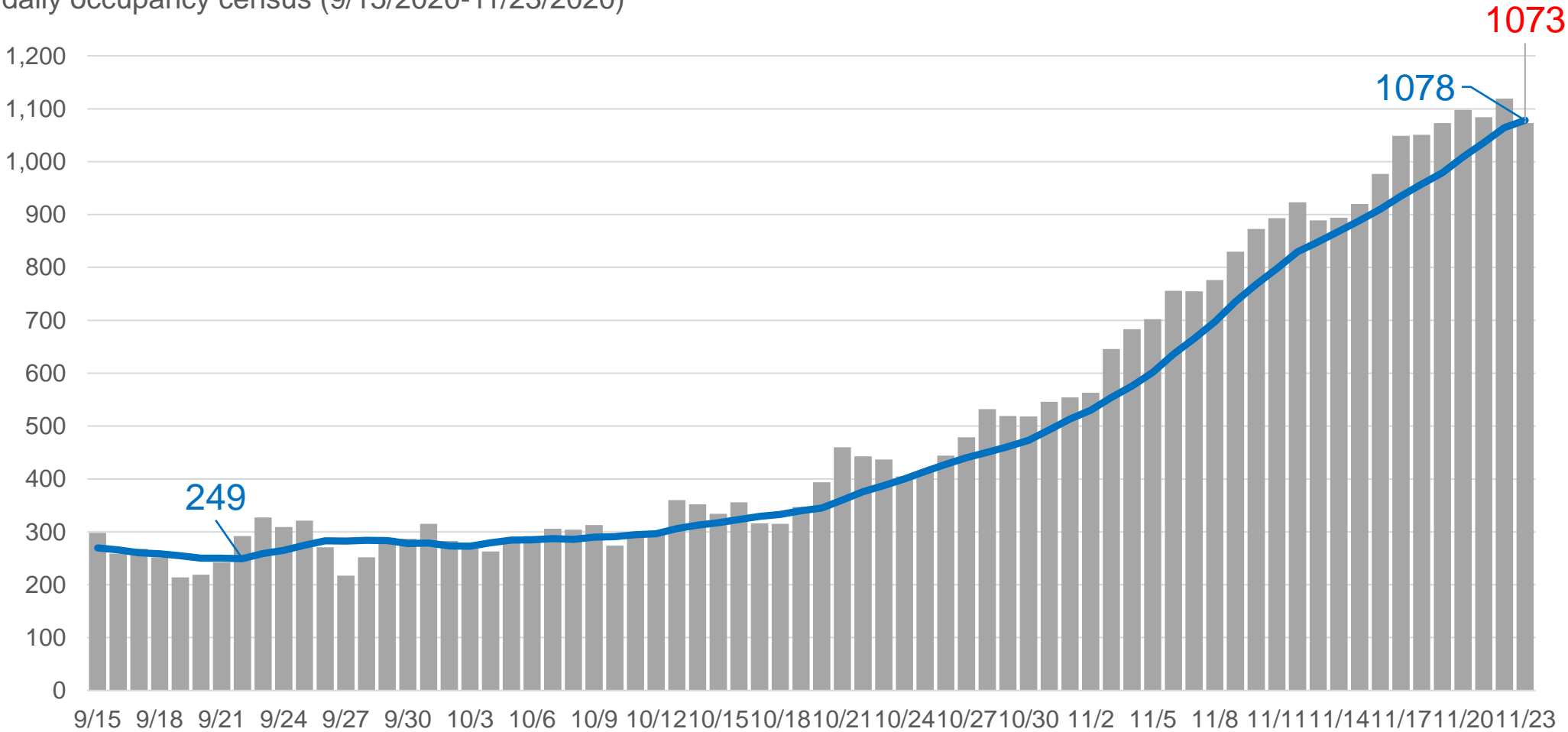
# Hospital System Capacity

# Non-ICU Bed Occupancy from COVID-19

Peak 7-day rolling average	1211 avg. occupied non-ICU beds 5/4/2020
Current Availability	23% 11/23/2020

COVID-19 acute non-ICU beds occupied, daily counts and 7 day average, daily occupancy census (9/15/2020-11/23/2020)

Non-ICU beds occupied by COVID-19 patients

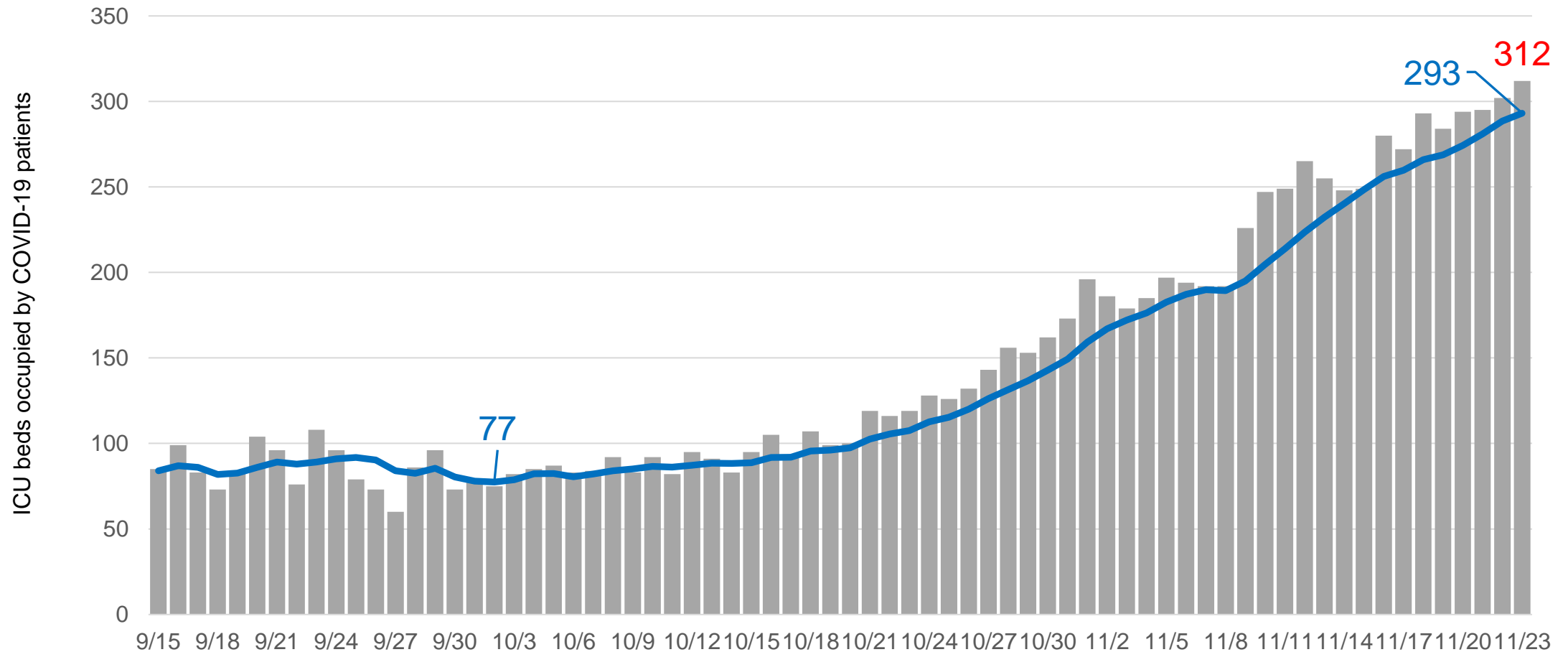


Includes all Chicago hospitals. Hospitals report daily to CDPH via EMResource, beginning April 3 (acute non-ICU occupancy). Acute non-ICU bed counts include burn, emergency department, med/surg, other, pediatrics and psychiatry beds in Chicago hospitals. Includes Chicago and non-Chicago residents. Includes confirmed and suspected COVID-19 cases.

# ICU Occupancy from COVID-19

Peak 7-day rolling average	501 avg. occupied ICU beds 4/30/2020
Current Availability	23% 11/23/2020

COVID-19 ICU beds occupied, daily counts and 7 day average, daily occupancy census (09/15/2020 - 11/23/2020)



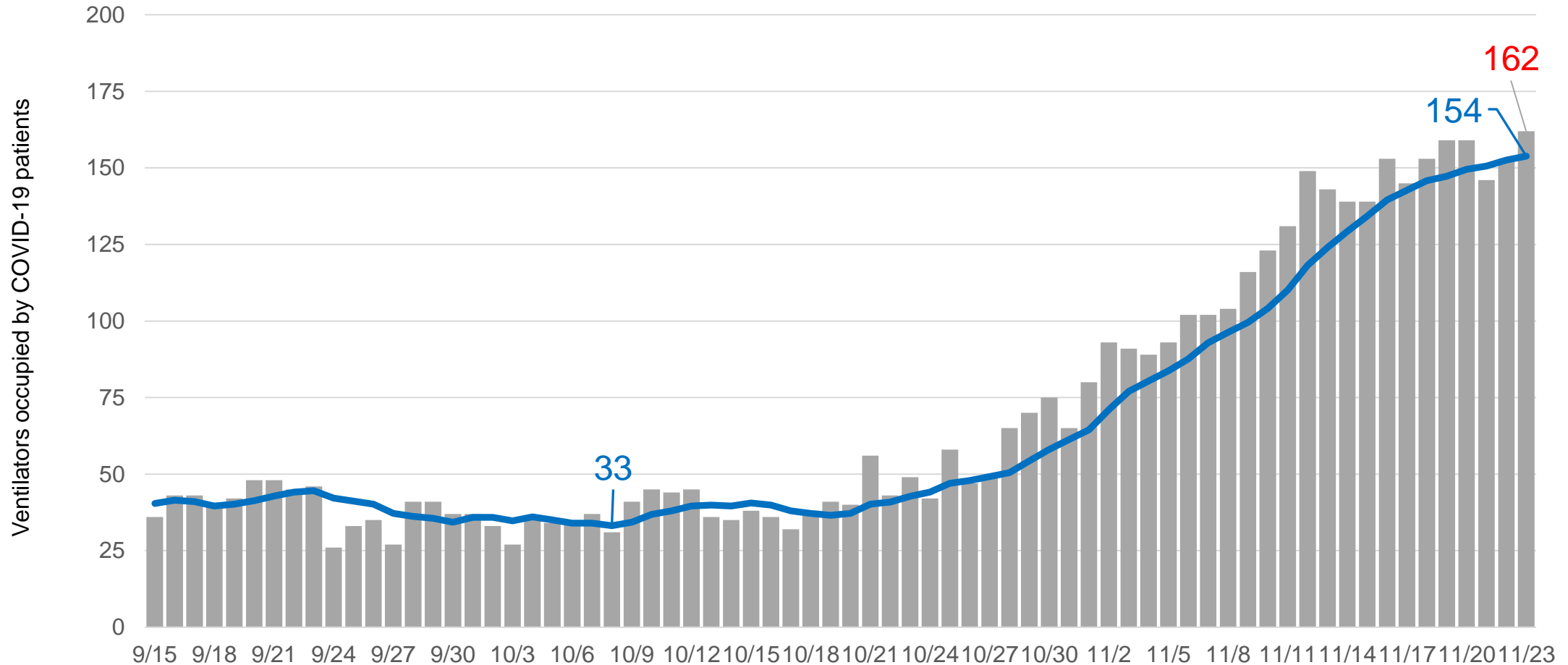
Includes all Chicago hospitals. Hospitals report daily to CDPH via EMResource, beginning March 19. ICU bed count includes all adult and pediatric ICU beds in Chicago hospitals. Includes Chicago and non-Chicago residents. Includes confirmed and suspected COVID-19 cases. Beginning 4/24/2020, the definition of ICU status changed as requested by HHS.



# Ventilator Utilization from COVID-19

Peak 7-day rolling average	344 avg. ventilators in use 5/2/2020
Current Availability	68% 11/23/2020

COVID-19 ventilators in use, daily counts and 7 day average, daily utilization census (9/15/2020-11/23/2020)



Includes all Chicago hospitals. Hospitals report daily to CDPH via EMResource, beginning March 19. Includes Chicago and non-Chicago residents. Includes confirmed and suspected COVID-19 cases. Beginning 4/24/2020, ventilator counts include all full-functioning mechanical ventilators, BiPAP, anesthesia machines and portable/transport ventilators.

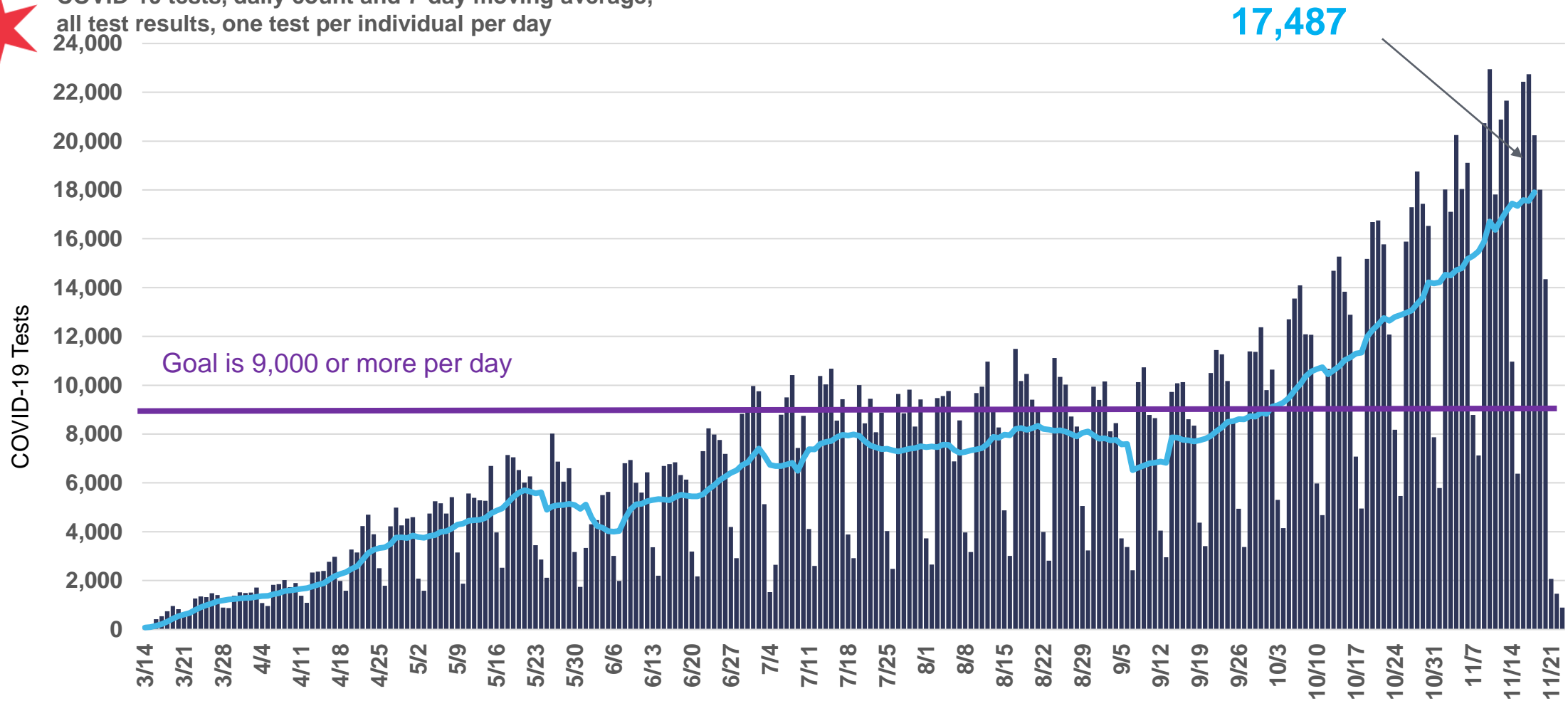


# Diagnostic Testing Capacity

# COVID-19 testing above 9,000 tests per day for 49 straight days. Now at all time high.



COVID-19 tests, daily count and 7-day moving average, all test results, one test per individual per day



All COVID-19 tests performed on Chicago residents per day as reported by electronic lab reporting from IDPH. 9000 tests per day represents the capacity to test 5% of Chicago residents per month. Daily counts for most recent dates displayed are likely incomplete.