



Regional Animal Services Planning

**2015 Regional Animal Services Planning
Conference**





Agenda

- Animal Services Planning
- The Regional Animal Services Plan (RASP)
Part I: Regional Command, Control, & Coordination
- RASP Part II: Implementation Guidance
- RASP Part III: Operational Guidance
- Tools & Resources
- Next Steps
- Q&A



Why is Animal Services Planning Necessary?

- Over 50% of U.S. households have 1 or more pets.
- Pets Evacuation and Transportation Standards (PETS) Act 2006
- Ensure the safety of people following a catastrophic incident



Benefits of the RASP

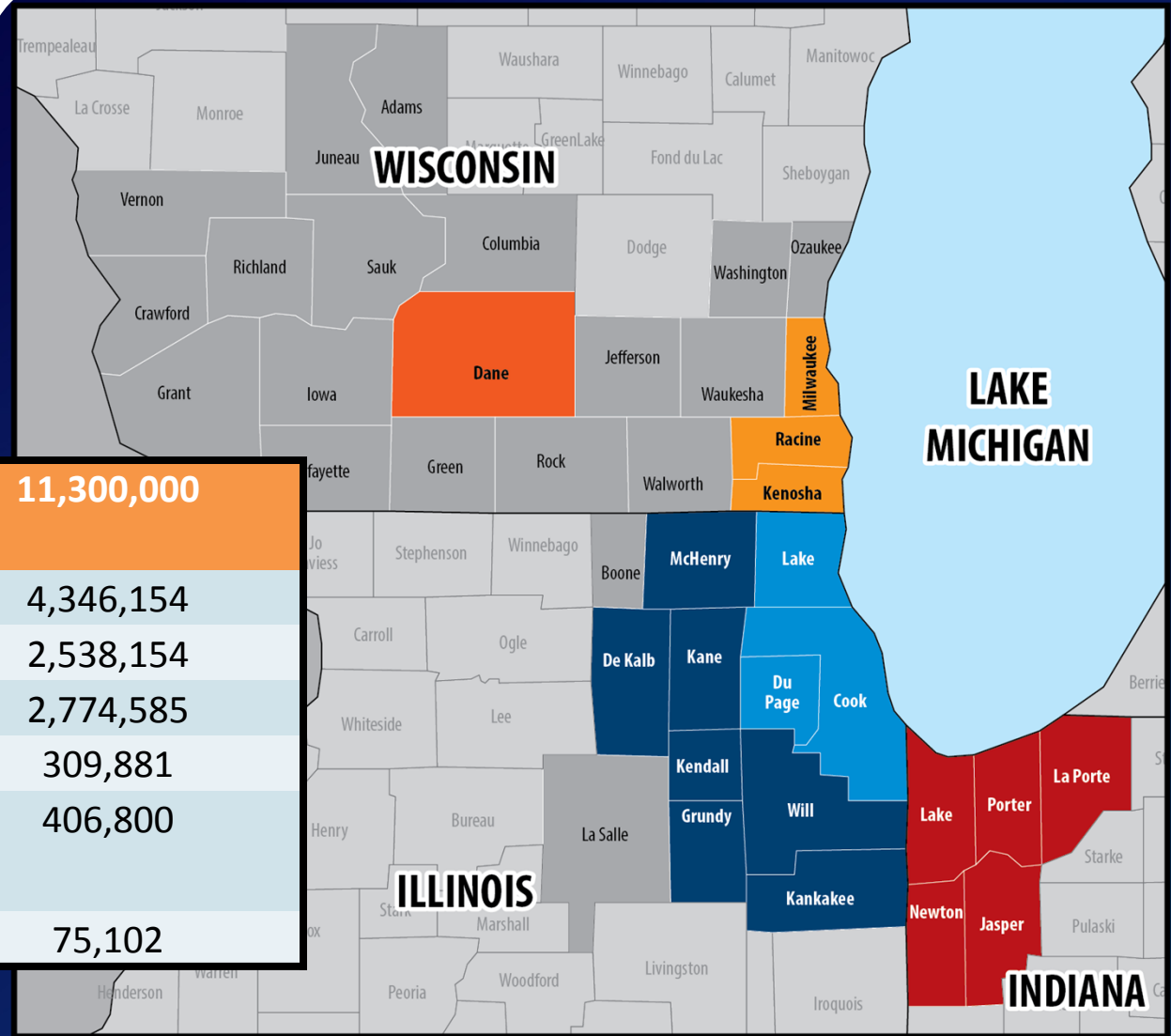
- Scalable
- Applicable for all-hazards incident management
- Provides a standardized approach to animal services operations
- Considers wide range of necessary stakeholders - public agencies and private entities
- Highlights the importance of volunteer support
- User friendly – tools referenced throughout



Regional Animal Services Plan

- Guidance & Templates
- RASP Parts
 - Part I – Regional Command and Control
 - Part II – Local Implementation Guidance
 - Part III – Local Operational Guidance
- Toolkit
 - Operational/Planning tools
 - Training Videos
 - Outreach Tools
- Best Practices Report
- Livestock Planning Guidance
- Memoranda of Understanding
- Transportation Recommendations Report

IL-IN-WI Combined Statistical Area (CSA)



| | |
|--|-------------------|
| Total CSA Population | 11,300,000 |
| # of Households | 4,346,154 |
| Total # Dogs | 2,538,154 |
| Total # Cats | 2,774,585 |
| Total # Birds | 309,881 |
| Total # Small Mammals (rabbits/rodents) | 406,800 |
| Total # Turtles | 75,102 |



Part I: Regional Command and Control

- Situation
- Regional Planning Assumptions
- Roles and Responsibilities
- Concept of Operations
- Plan Activation
- Animal Tracking
- Resource Needs





Planning Assumptions

- All-hazards' planning approach for a catastrophic incident
- Little to no-notice event affecting 1,000,000 individuals

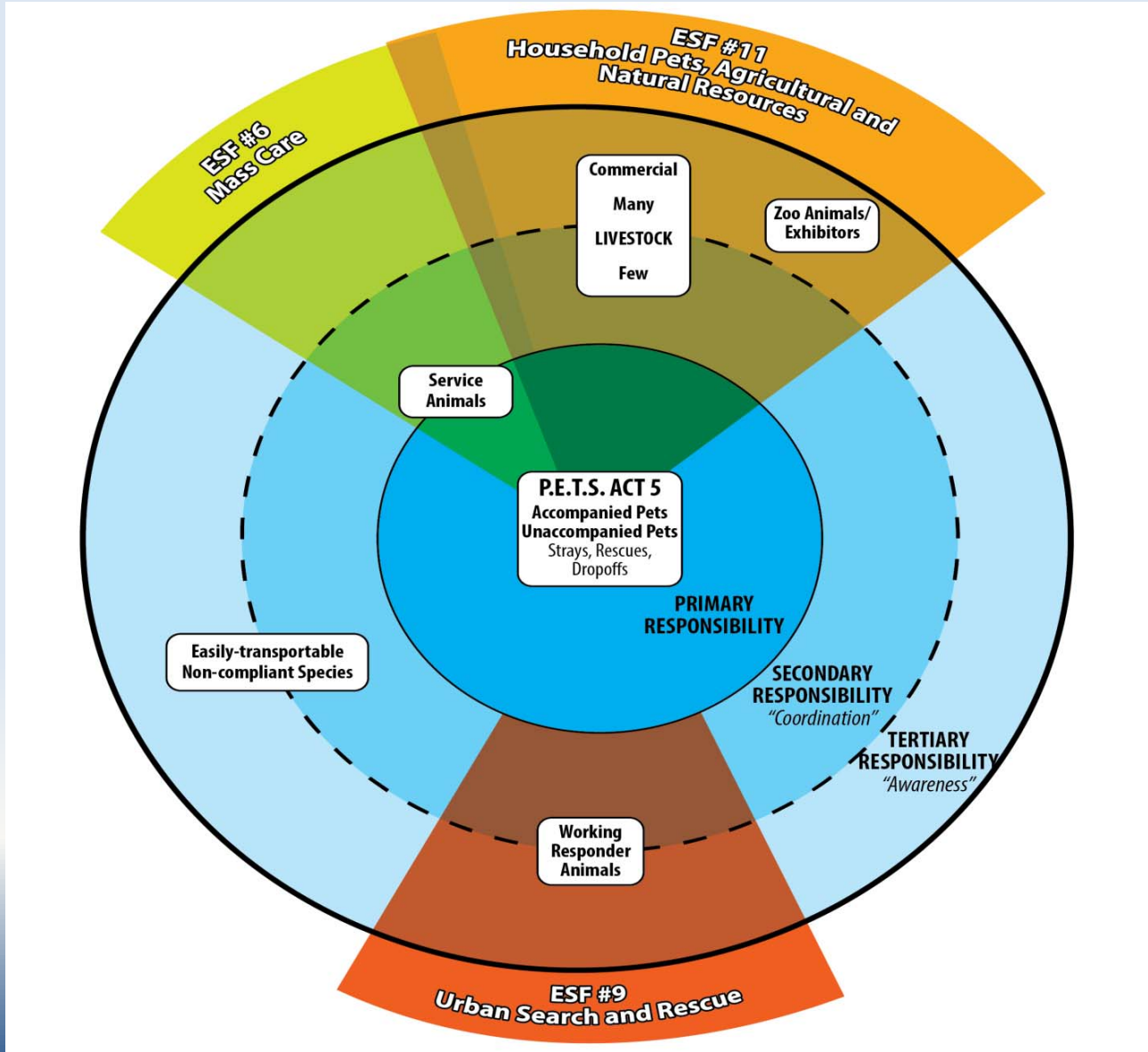
| Total displaced population | 1,000,000 |
|---|-----------|
| Population seeking assistance | 100,000 |
| # of Households seeking assistance | 38,462 |
| # of Households seeking assistance with 1 or more pet | 23,846 |

| | |
|--|---------------|
| Dogs | 22,462 |
| Cats | 24,554 |
| Birds | 2,742 |
| Small Mammals (Rabbits and rodents) | 3,600 |
| Turtles | 665 |
| Total # of Animals Needing Assistance | 54,022 |





“The Animal Planet”



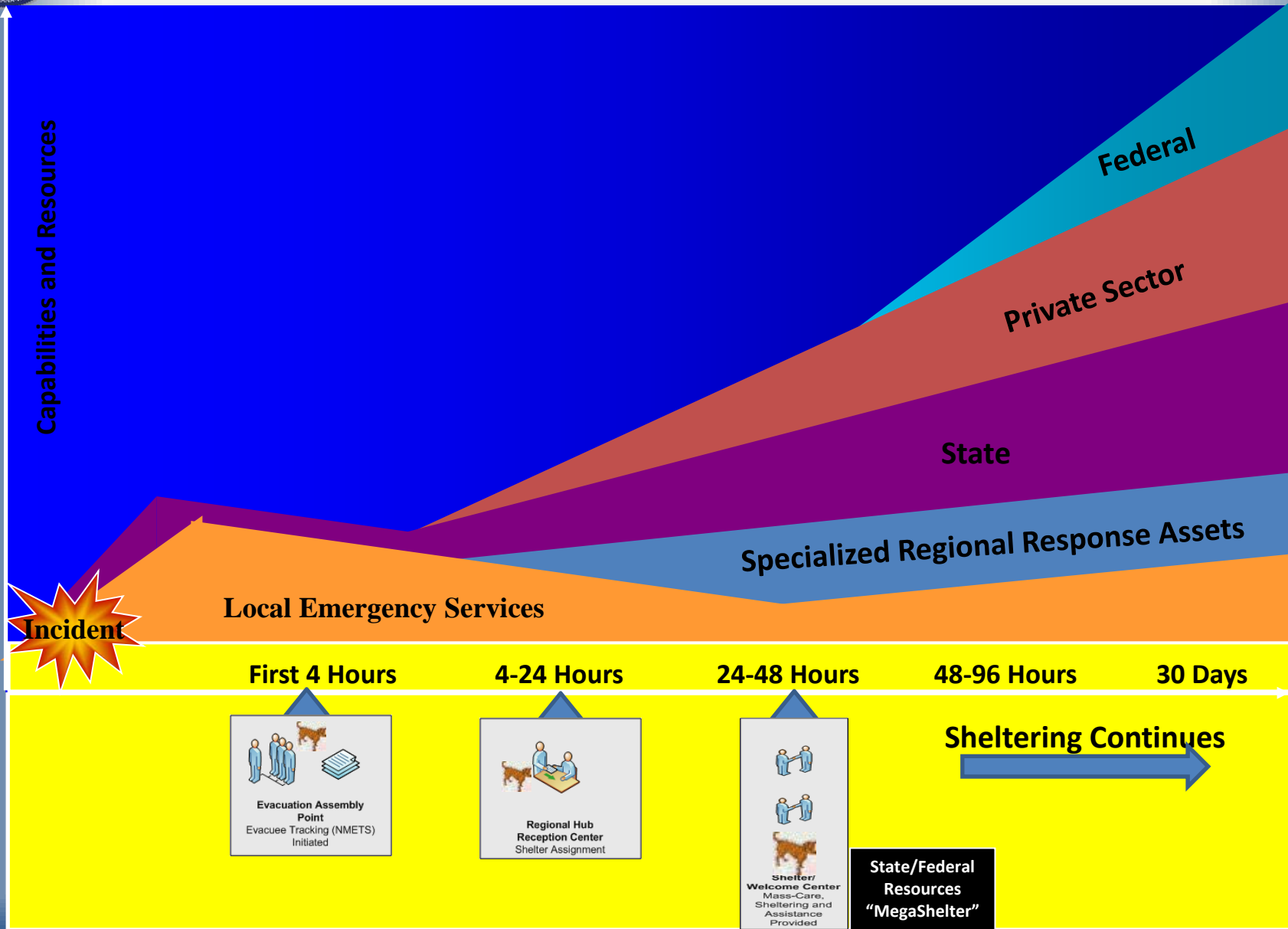


Roles and Responsibilities

| Pet Shelter Functions | Emergency Mgt. | Facility Rep. | Animal Service | Law Enforcement | Veterinary Orgs. | Fire Services | Public Health | Sanitation | Transit | Animal Rescue NGOs | Spontaneous Volunteers | State and Federal Emergency Mgt. |
|--|----------------|---------------|----------------|-----------------|------------------|---------------|---------------|------------|---------|--------------------|------------------------|----------------------------------|
| Activation | P1 | | | | | | | | | | | S |
| Facility Opening | P | P | | | | | | | | S | | S |
| Security | | P | S | S | | | | | | | | S |
| Pet Care (Stand-alone Pet Shelter) | P | P/S | | | | | | | | P | | S |
| Pet Care (Co-located with Human Shelter) | | S | | | | | | | | P | | |
| Transportation | S | | S | | | | | | P | | | S |
| Feeding | S | P2 | | | | | | | | P2 | | S |
| Veterinary Care/Vaccination | | | | | P | S3 | | | | | | S |
| Decontamination | | | | | | P | | | | | | S |
| Waste Disposal | | | | | | | | P | | | | |
| Volunteers Management | S | | | | | | | | | P | S | S |
| Deactivation | P | P | | S | S | S | S | | S | S | | S |
| Finance | S | | | | | | | | | P | | S |

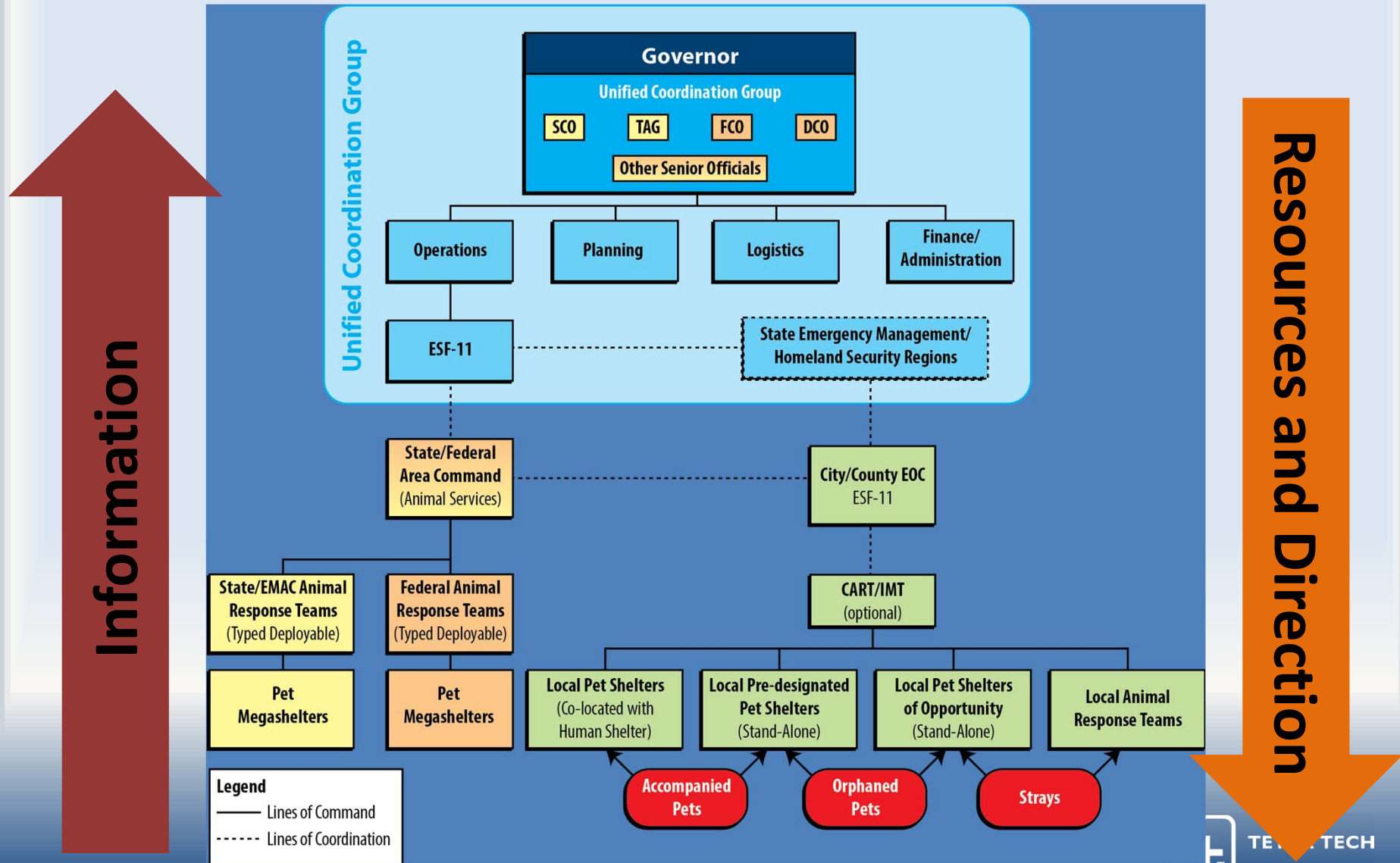


Concept of Operations (CONOPS)





CONOPS: Regional Coordination





RASP Part II: Local Implementation Guidance

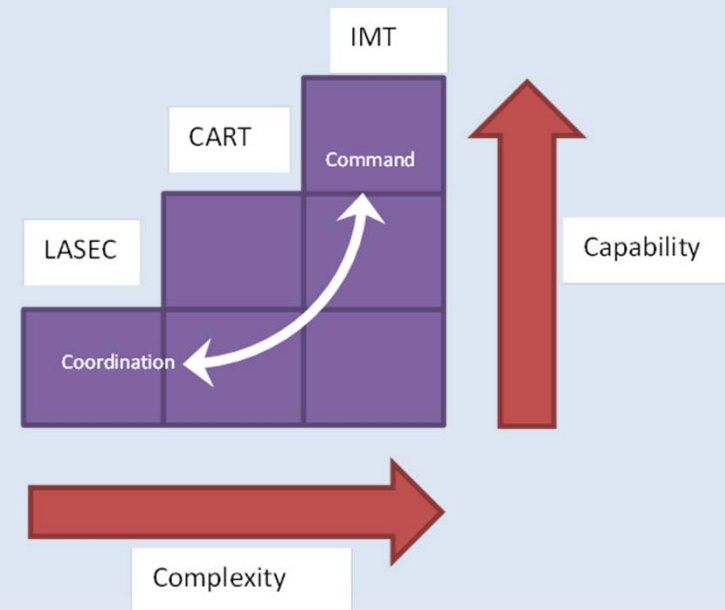
- Building Capability – Goals & Objectives
- Forming a Planning Team
 - Identifying a LASEC
- Concept of Operations – Local Command, Control, & Coordination



Local Command, Control, & Coordination

Options

- Local Animal Services Emergency Coordinator (LASEC)
- County Animal Response Team
- Incident Management Team





Local Animal Services Emergency Coordinator (LASEC)

Local stakeholder partner to champion planning and operational shelter coordination with county emergency management and lead agency for animal services

- LASEC maybe:
 - a local animal shelter director
 - local animal shelter alliance coordinator
 - NGO member
 - animal control agency personnel
 - etc.



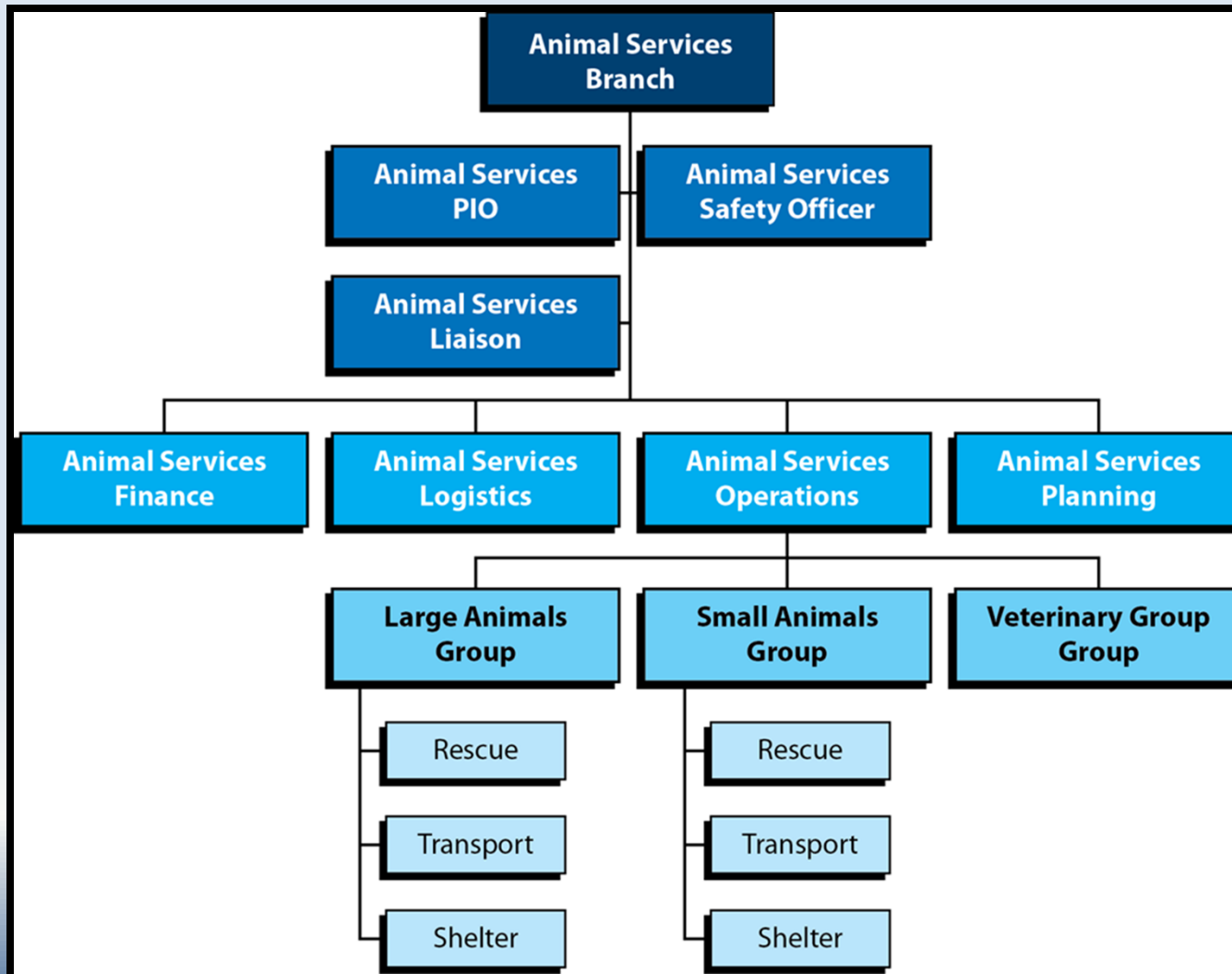
County/Local Animal Response Team (CART)

Organizational umbrella for volunteers, government, private sector, and NGOs

- LASEC
- CART Veterinarian
- CART Animal Control Officer
- CART Staffing/Resource Coordinator
- CART Liaison (EOC)
- CART Members
- Deployable Assets – Household Pet Shelter Teams



County Animal Services Incident Management Team (IMT)



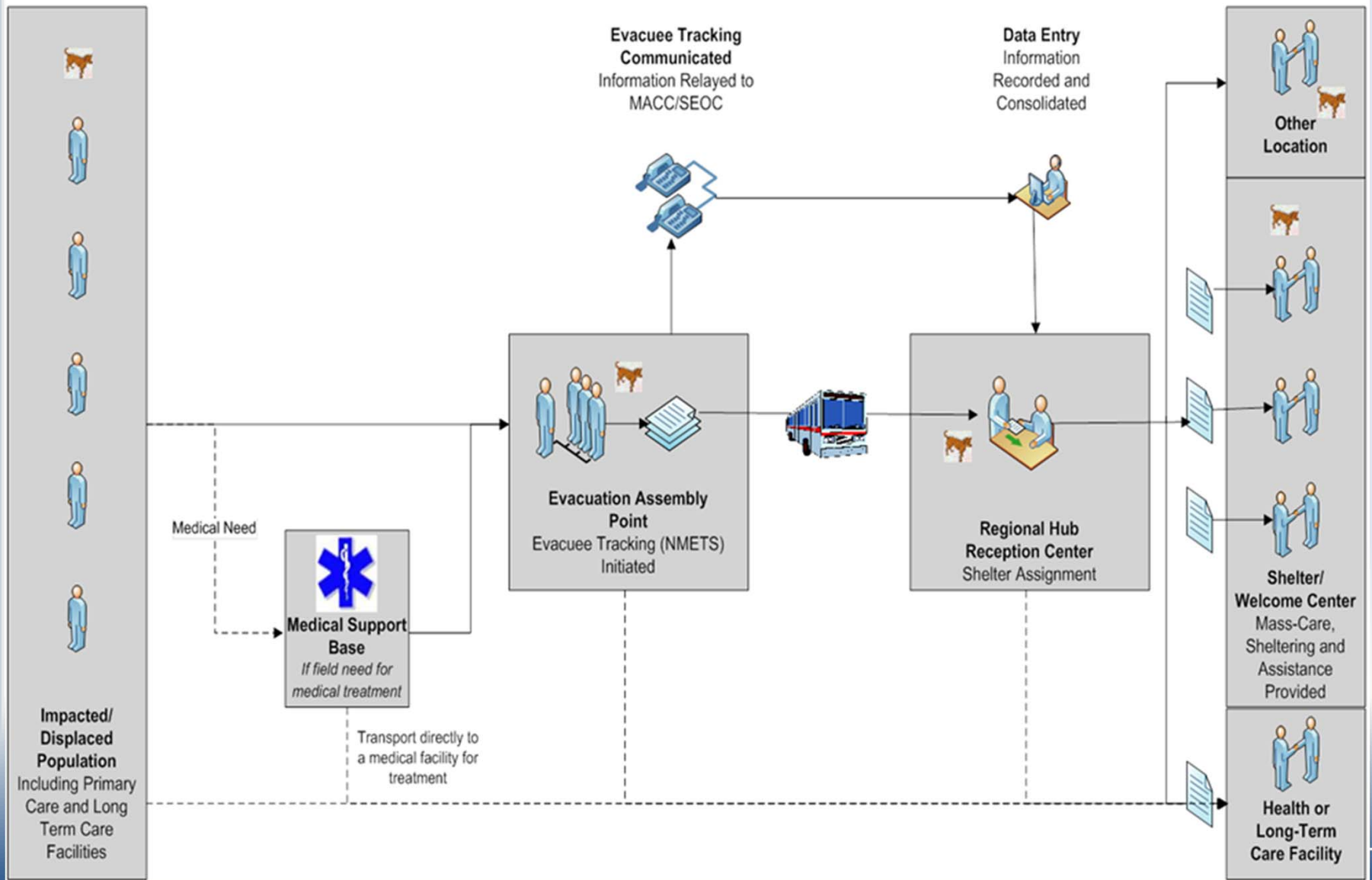


RASP Part III: Operational Guidance Template

- Local Concept of Operations
- Evacuation Assembly Points (EAP)
- Regional Hub Reception Center (RHRC)
- Emergency Animal Shelters
- Building Capacity
- Shelter Management
- Functional Area Operations



Local Concept of Operations



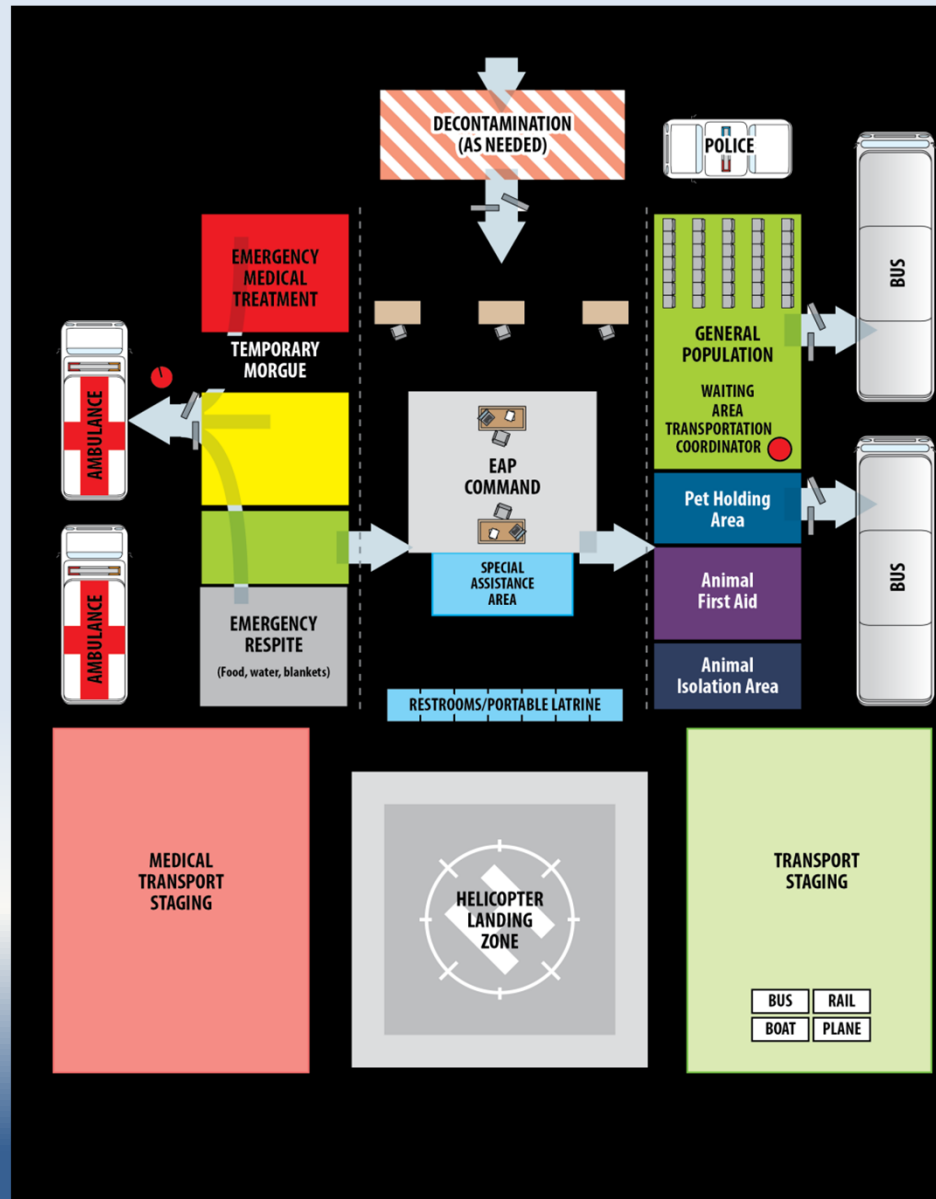


Transportation

- Transportation needed:
 - EAP to RHRC to Shelter & Return
- Considerations should include
 - Modes of transportation:
 - Animal control vehicles; refrigerated trucks; panel vans; public buses and transit
 - Local policies for admittance of animals on public transportation
 - Methods of transport – caged vs. uncaged; muzzled/unmuzzled; owner accompanied vs. non-accompanied
 - Transportation manifesting and animal tracking

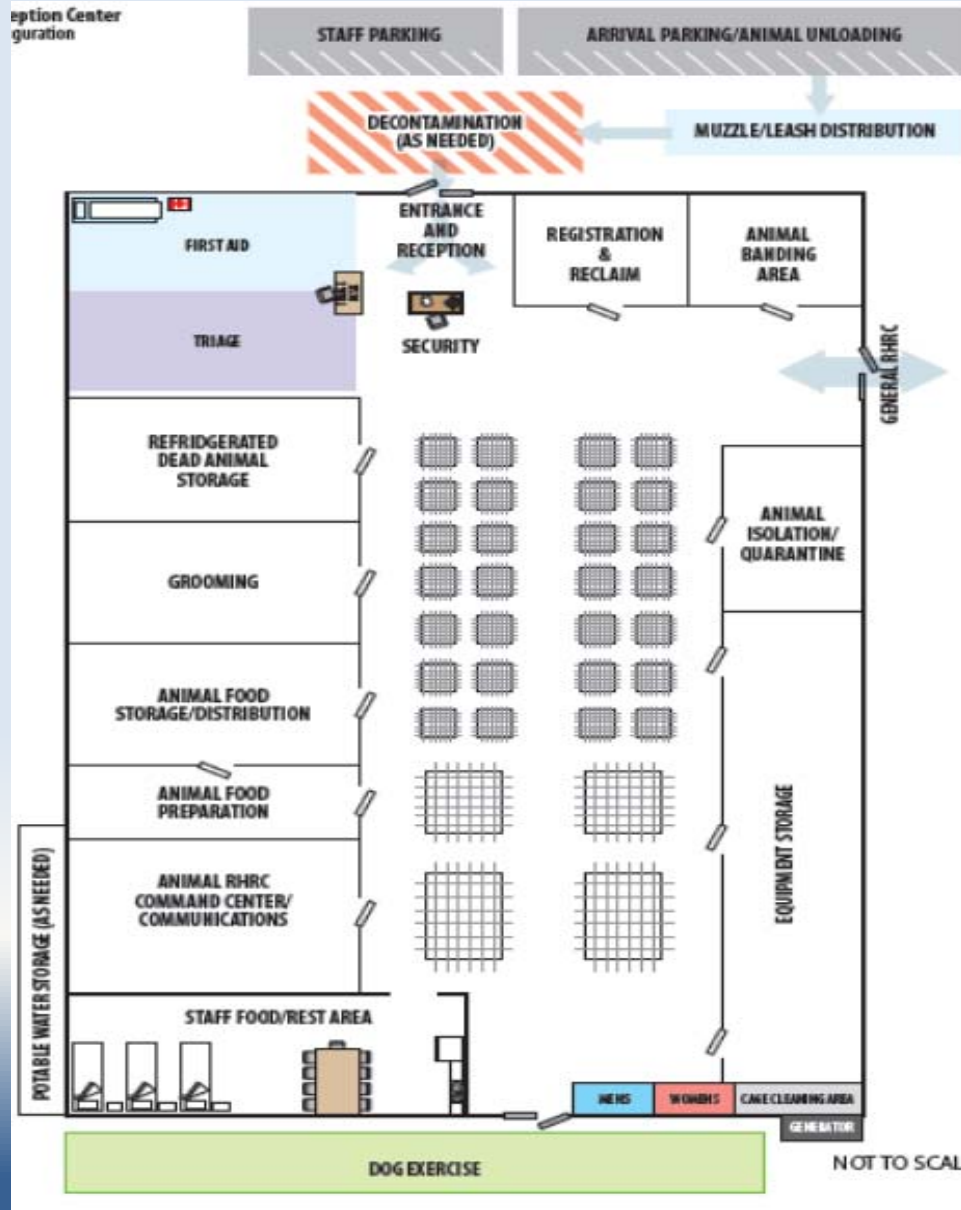


Evacuation Assembly Points (EAP)





The Pet RHRC





Emergency Animal Shelters

- Mission – control/support humane care of companion animals during a disaster for 14 days+; capacity ranges from 50 – 2500+ pets.
- Staffing – Combination of animal services gov't and NGO's, volunteers, ad hoc commercial facilities, interstate mutual assistance (EMAC), and deployable State/Federal animal services teams



Emergency Shelter Site Selection

- Fairgrounds
- Dog Parks
- Dog Training Facilities
- Golf Course
- Livestock Auction Facilities
- Pet Day Care Centers
- Schools
- Warehouse Facilities





TOOLS AND RESOURCES



Planning Toolkit

- Tools, samples, job-aids, and other materials that jurisdictions can use in developing their plans and upon implementation.
 - Facility rules
 - Site selection and assessment forms
 - Activation/deactivation checklist
 - Functional area job action sheets
 - Resource checklists and projections
 - ICS forms
 - Sample situation reports form
 - Population and density maps for pets and livestock



MOA Templates and Samples

- Regional Memoranda of Agreement (MOA)
 - For animal services between local governments of the CSA
 - Jurisdictions should review and sign on the regional MOA
- Mission Ready Package Templates
 - With resource and cost reimbursement information they can be used to request assistance from outside the CSA as they include resource title, NIMS Typing information (where applicable), and mission capabilities.



Just-in-Time Training

- Series of short video modules that can be provided to spontaneous volunteers and shelter staff that to provide services support that is standardized across the region.
 - Animal Services Orientation
 - Personnel health and safety
 - Shelter cleaning and sanitation
 - Feeding and watering
 - Aggressive animal handling and bite procedures
 - General Animal Care
 - ICS Overview
 - Registration and Intake





Outreach Toolkit

- Materials that jurisdictions can use to socialize the RASP concepts and assist in volunteer recruitment activities.
 - Customizable content
 - Sample presentation
 - CART brochure
 - Flyers
 - Regional shelter listings
 - Volunteer sign-up form





Where to Begin?

- Engage stakeholder partners
 - Form a collaborative planning team
- Consider the needs of your jurisdiction
- Conduct risk assessment
- Set attainable goals
- Identify volunteer groups/ Consider formation of CART team
- Identify potential shelter facilities



Setting Goals & Objectives

| County | State | Total Population (people) | Total Population (pets) | Estimated Pets Needing Assistance |
|--------------|-------|---------------------------|-------------------------|-----------------------------------|
| Cook | IL | 5,194,675 | 2,806,283 | 24,836 |
| Milwaukee | WI | 947,735 | 511,988 | 4,531 |
| Dupage | IL | 916,924 | 495,344 | 4,384 |
| Lake | IL | 703,462 | 380,026 | 3,363 |
| Will | IL | 677,560 | 366,034 | 3,239 |
| Kane | IL | 515,582 | 278,529 | 2,465 |
| Lake | IN | 496,004 | 267,953 | 2,371 |
| Dane | WI | 488,073 | 263,668 | 2,333 |
| McHenry | IL | 308,760 | 166,799 | 1,476 |
| Racine | WI | 195,408 | 105,564 | 934 |
| Kenosha | WI | 166,426 | 89,907 | 796 |
| Porter | IN | 146,798 | 79,304 | 702 |
| Kendall | IL | 114,736 | 61,983 | 549 |
| Kankakee | IL | 113,449 | 61,288 | 542 |
| LaPorte | IN | 111,467 | 60,217 | 533 |
| DeKalb | IL | 105,160 | 56,810 | 503 |
| Grundy | IL | 50,063 | 27,045 | 239 |
| Jasper | IN | 30,043 | 16,230 | 144 |
| Newton | IN | 14,566 | 7,869 | 70 |
| TOTAL | | 11,296,891 | 6,102,841 | 54,010 |





Plan and Contact information

- Bethany Hand
 - (312) 201-7457
 - Bethany.hand@tetrattech.com
- www.gearupgetready.org



Open Discussion and Questions