

#10 Near West Side

One of the smallest submarkets, Near West Side straddles the Eisenhower Expressway. The Illinois Medical District is a major employer located east of Ashland and south of the expressway. Shopping centers and grocery stores are concentrated in the Halsted corridor, which includes Greek Town, close to the Central Area. The active retail corridor along Roosevelt Road is expanding into the Near West Side, and Target opened a store in this submarket in 2012.

Demographics

	2000	2010	2012*
Population	40,741	44,923	45,669
Households	14,702	20,059	20,324
Median HH Income*			\$30,779

Median Age	31.0
1 Person Households	8,288 41.3%
All Households with Children	4,077 20.3%
All Households 65+	2,612 13.0%

Square Miles	4.7
Population Density per Square Mile	9,716
SF of Land in Parcels Zoned B, C, D & BPD	17.0M
SF of Ground Floor Area Zoned B, C, D & BPD	7.5M
Total Employment	60,176

Source: US Census Bureau, Esri, Dun & Bradstreet *2012 Estimate

Submarket Inventory

Shopping Centers

1 community centers with more than 125,000 SF:
University Village Marketplace

2 neighborhood centers with 30,000 to 125,000 SF:
Ashland-Roosevelt Center, Gateway to the West Loop

Big Box Retailers

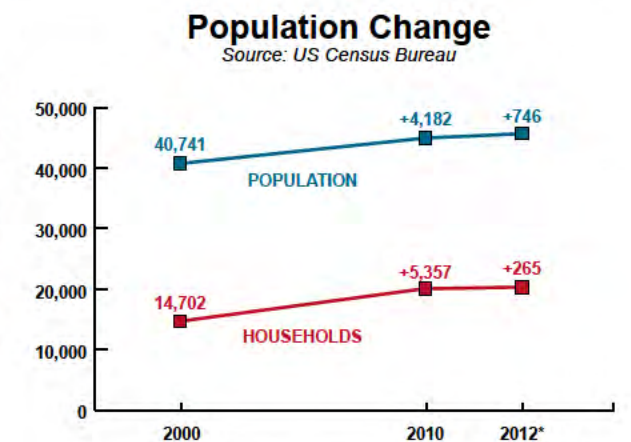
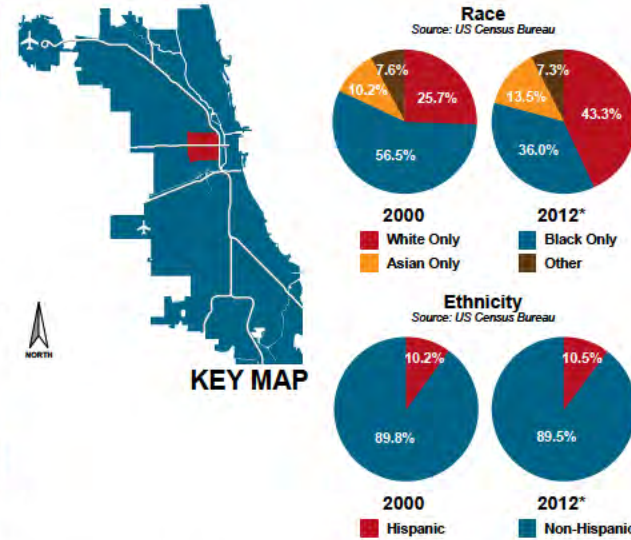
1 Costco

Grocery Stores

1 Dominick's
1 Jewel-Osco
1 Mariano's Fresh Market

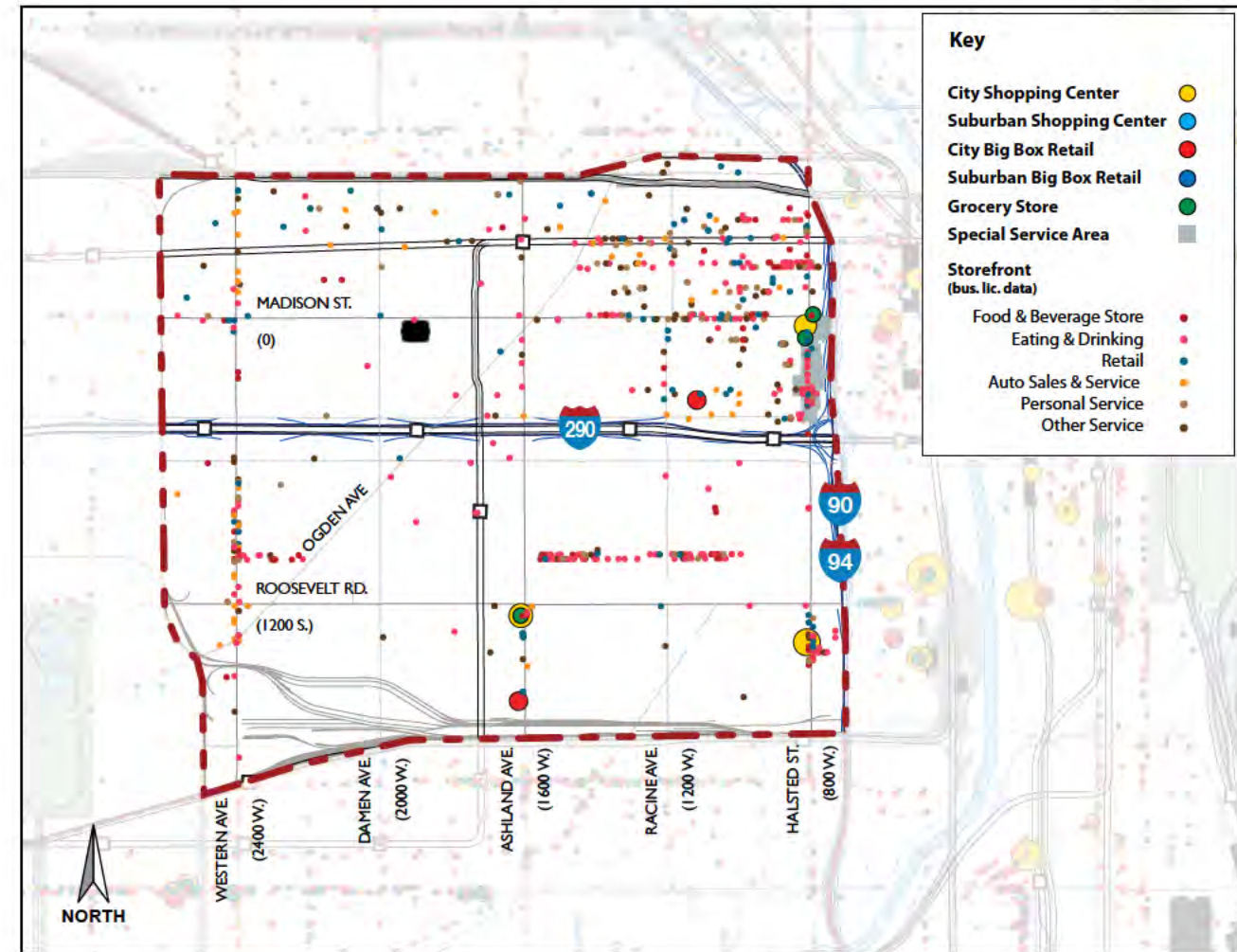
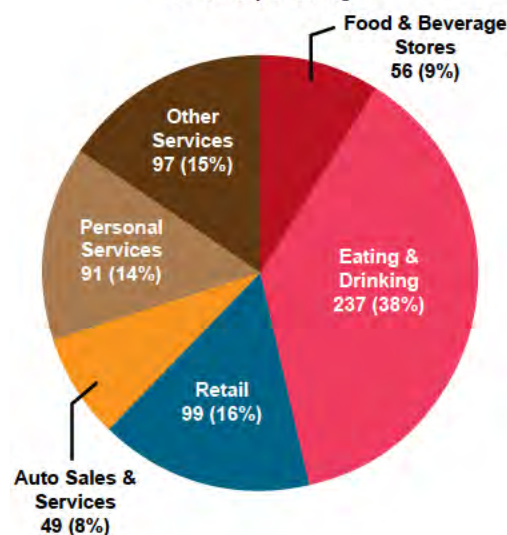
Special Service Areas

Greek Town #16



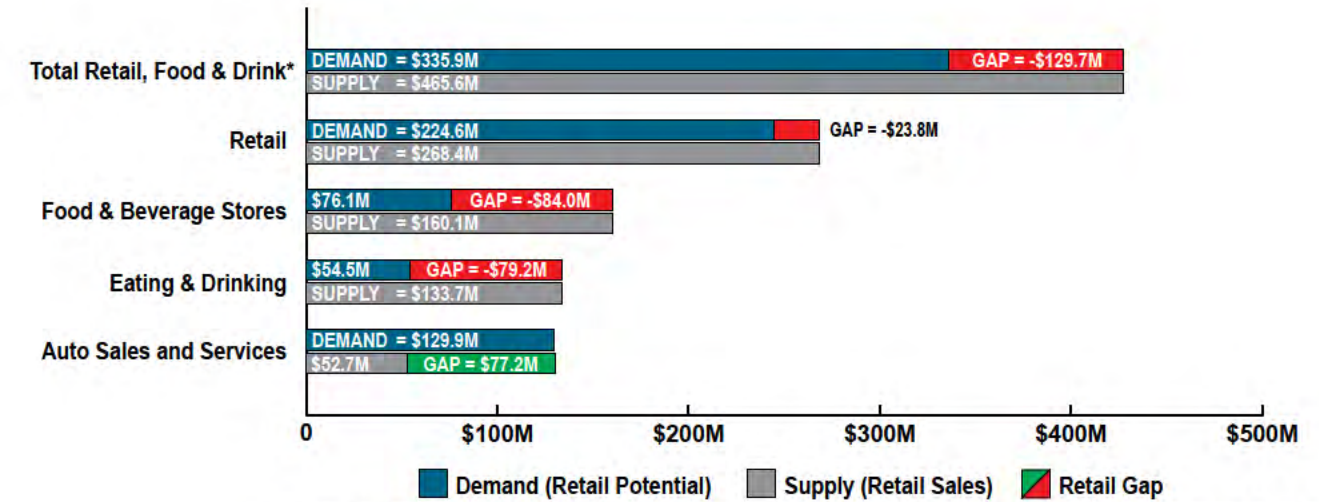
Submarket Business Licenses

Source: City of Chicago



Submarket Inventory Map

Submarket Gap Analysis



Source: Esri Business Analyst