

#4 Calumet

Located in the southeast corner of the City, Calumet submarket covers a large area that includes Lake Calumet. Halsted Street and Michigan Avenue are important retail corridors. The Walmart-anchored shopping center under construction in 2013 at the Bishop Ford Freeway and 109th in the Pullman community will add the first discount department store to the submarket. Residents of Hegewisch and other communities in this submarket are likely to shop at stores located across the Indiana border.

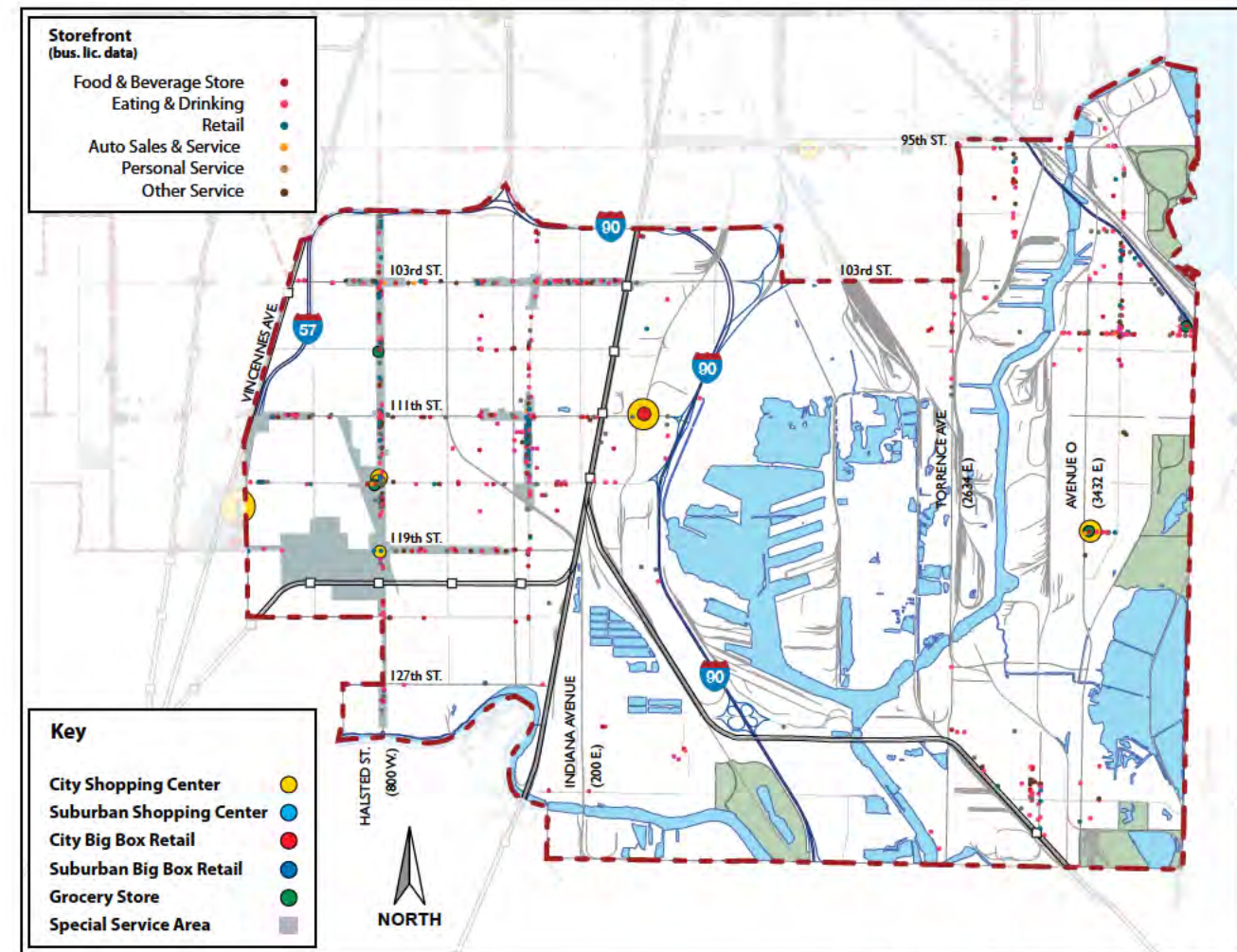
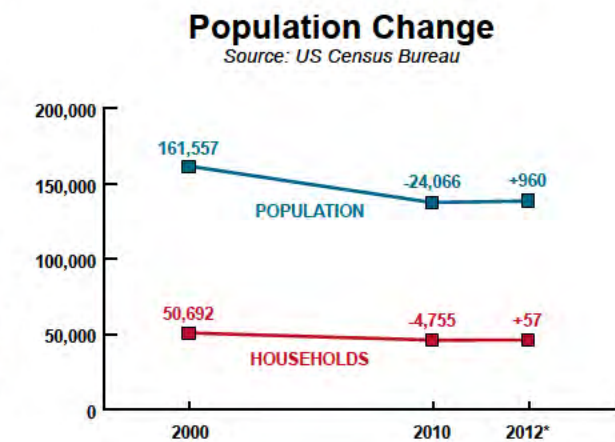
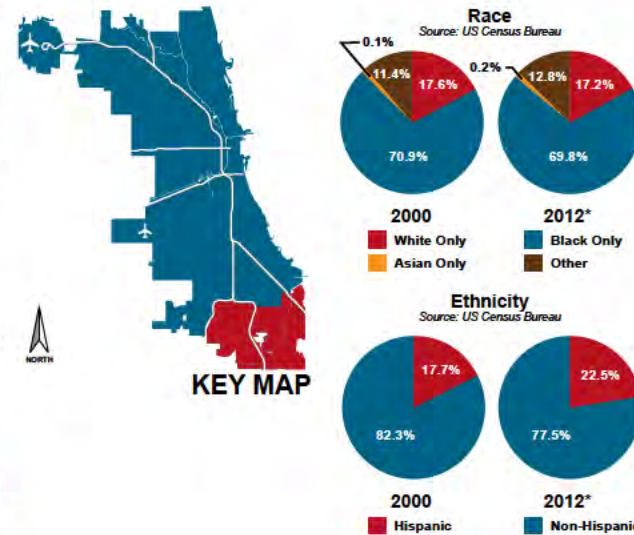
Demographics

| | 2000 | 2010 | 2012* |
|-------------------|---------|---------|----------|
| Population | 161,557 | 137,491 | 138,541 |
| Households | 50,692 | 45,937 | 45,994 |
| Median HH Income* | | | \$37,162 |

| | |
|------------------------------|--------------|
| Median Age | 35.2 |
| 1 Person Households | 11,299 24.6% |
| All Households with Children | 18,271 39.8% |
| All Households 65+ | 13,347 29.1% |

| | |
|---|--------|
| Square Miles | 31.7 |
| Population Density per Square Mile | 4,370 |
| SF of Land in Parcels Zoned B, C, D & BPD | 24.0M |
| SF of Ground Floor Area Zoned B, C, D & BPD | 6.2M |
| Total Employment | 28,319 |

Source: US Census Bureau, Esri, Dun & Bradstreet *2012 Estimate



Submarket Inventory Map

Submarket Inventory

Shopping Centers

1 community centers with more than 125,000 SF:
Lake Pointe Plaza

3 neighborhood centers with 30,000 to 125,000 SF:
Halsted Indoor Mall, Maple Park Marketplace,
119th & Halsted

Big Box Retailers

1 Walmart

Grocery Stores

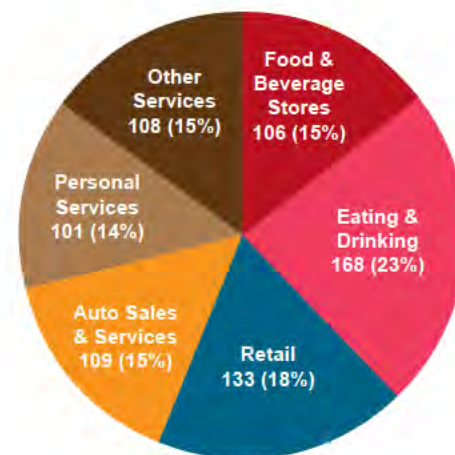
2 ALDI
1 Pete's Fresh Market
1 Save-a-Lot

Special Service Areas

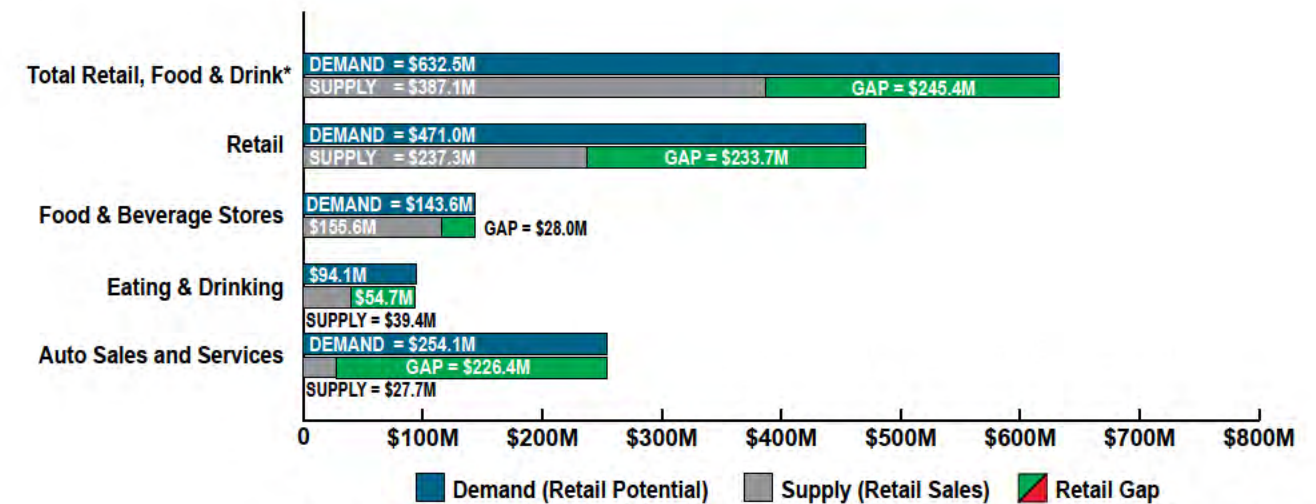
Michigan Avenue - Roseland #40
103rd Street - Roseland #41
103rd & Halsted #45
119th & Halsted #46

Submarket Business Licenses

Source: City of Chicago



Submarket Gap Analysis



*Excludes Non-store Retailers and Auto Sales and Services

Source: Esri Business Analyst