

Thematic Framework Analysis for Chicago Landmarks

October 3, 2019

Commission on Chicago Landmarks Meeting

The Chicago Landmarks Ordinance turned 50 years old in 2018.

In August 2019, the Department of Planning and Development's Planning and Historic Preservation Divisions completed a review of all of the City's designated landmarks to date using the National Park Service's Thematic Framework methodology.

This analysis is available for public review on DPD's website.



Landmarks Ordinance

and the Rules and Regulations of the Commission on Chicago Landmarks



CITY OF CHICAGO
RAHM EMANUEL, MAYOR

Commission on Chicago Landmarks
Rafael M. Leon, Chairman

Reprinted October 7, 2015



DPD

CHICAGO DEPARTMENT OF
PLANNING & DEVELOPMENT

Thematic Framework Published by the National Park Service



The National Park Service (NPS) is a bureau of the U.S. Department of the Interior and its mission is to care for special places saved by American people so that all may experience our heritage.

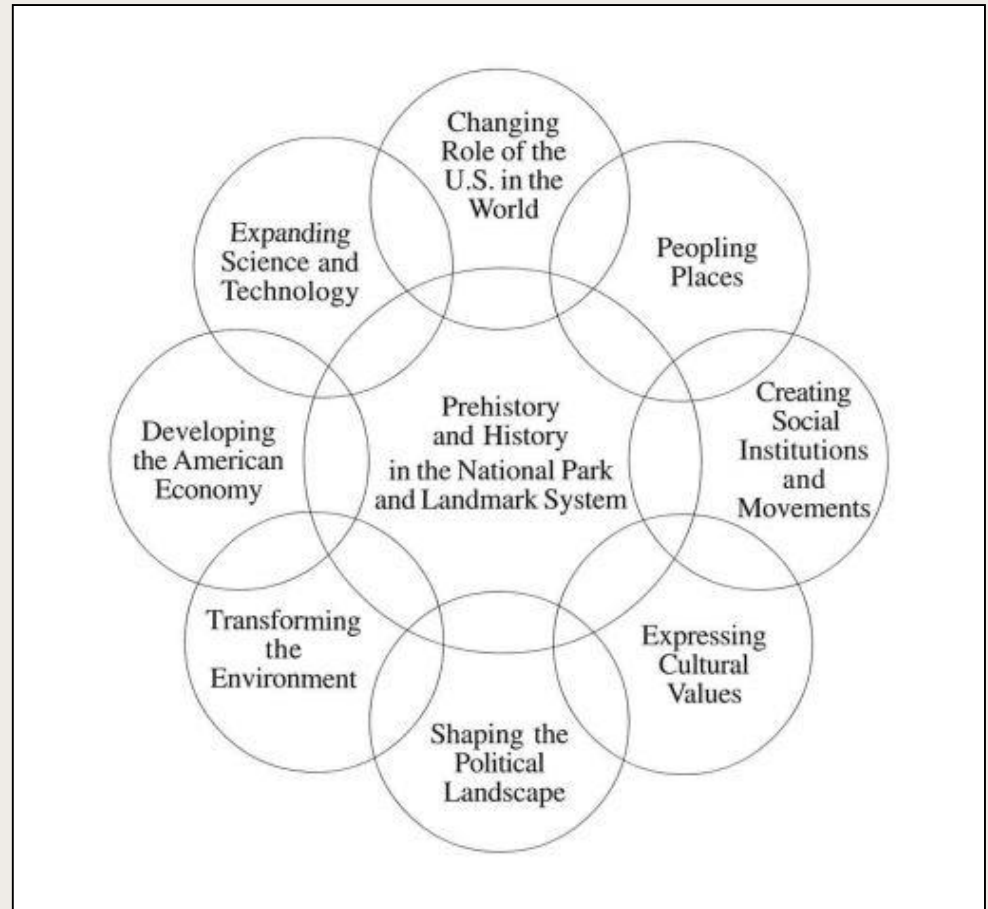
NPS published a Thematic Framework for their National Historic Landmarks Program to recognize nationally significant cultural resources outside of the park service.

- First conceived in 1936, the Thematic Framework's initial focus was on the nation's early military history and political figures
- Revisions to the document over the past 50 years reevaluated the nation's history in a reflective manner, and expanded their approach to include themes which reflect the broader history of the nation and its people
- The NPS Thematic Framework was last updated in 2000

Thematic Framework Published by the National Park Service

Eight major themes are identified in the NPS Thematic Framework:

1. Peopling Places
2. Creating Social Institutions and Movements
3. Expressing Cultural Values
4. Shaping the Political Landscape
5. Developing the American Economy
6. Expanding Science and Technology
7. Transforming the Environment
8. Changing Role of the U.S. in the World Community



Thematic Framework Analysis for Chicago Landmarks

DPD staff has evaluated all Chicago Landmarks to date, from the Greek Revival-style home of Henry B. Clarke in the Prairie Avenue district, Chicago's first designated landmark in 1970, to the most recent 2019 landmark designation: the Rainbow Pylons and Legacy Walk honoring LGBTQ activists and located along Halsted Street in Lakeview.

The City's Landmark Designation Program has evolved in the 50 years since its establishment to move beyond celebrating the refined architecture of high society to preserving places of cultural importance to communities as a whole. As a result, the catalogue of landmarks recommended by the Commission on Chicago Landmarks and adopted by City Council is a good representation of the citizenry over time and reflects the various cultural influences that have helped shape Chicago.

This analysis serves as a benchmark of the landmark program to date and as evidence of historic preservation's shifting sensibilities over time to view historical significance through a more equitable lens.



Theme 1: Peopling Chicago

Ethnic Homelands (Native American and French occupations)

Encounters, Conflicts and Colonization (First European settlers in frontier Chicago)

Migration From Outside and Within (Ethnic European Immigration, the African American Experience, recent immigration from Asia and the Americas)

Community and Neighborhood (Settlement patterns of groups from similar heritage or socio-economic conditions)



Site of the Origins of the Illinois & Michigan Canal

This water route for navigation was used heavily by Native Americans; the Portage was also critical to French explorers Joliet and Marquette.



Noble-Seymour-Crippen House

Original 1833 wing was the home of Mark Noble, one of the area's first European settlers.



Chicago Bee Building

Associated with the African American community; headquarters for the *Chicago Bee* newspaper, founded by African-American entrepreneur Anthony Overton.



Prairie Avenue District

The “sunny street that held the sifted few,” was a fashionable avenue for affluent Chicagoans whose residences were often architect-designed and on a grand scale.

Theme 2: Creating Social Institutions and Movements

Clubs and Organizations (Fraternal Organizations, Ethnic Sport and Music Clubs, Resorts)

Reform Movements (1890s-1920s Progressive Era, 1950s-1960s Civil Rights Movement)

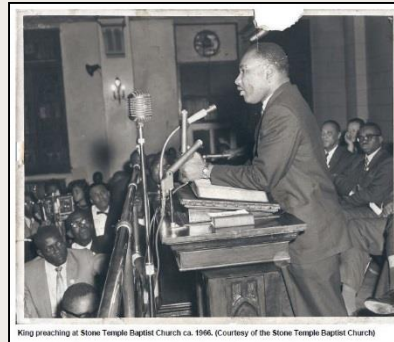
Religious Institutions (Primarily Catholic, Protestant and Jewish places of worship and related institutions)

Recreational Activities (Chicago Park District, Chicago Zoo, Wrigley Field)



Vorwaerts Turner Hall

Constructed by the *Turnverein Vorwaerts*; one of several dozen ethnic sports clubs in Chicago, with other turner clubs located throughout the United States and Germany in the 19th century; members of this club helped establish physical education within Chicago Public School curriculum.



King preaching at Stone Temple Baptist Church ca. 1966. (Courtesy of the Stone Temple Baptist Church)

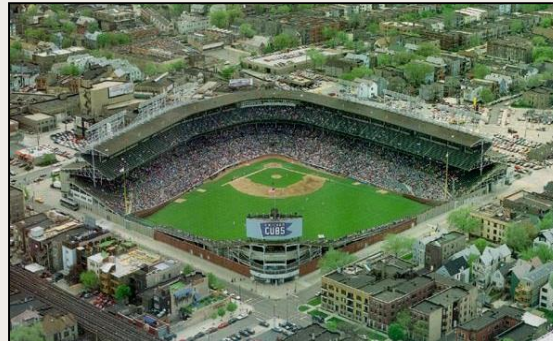
Stone Temple Baptist Church

Originally home to the First Romanian Congregation Synagogue from 1925 to 1954; Martin Luther King, Jr. addressed Lawndale community members here in the mid-1960s, after the building was purchased by a Baptist congregation.



Jewish People's Institute

Social nucleus of Chicago's North Lawndale Jewish community; historically one of the nation's largest Jewish communities.



Wrigley Field

One of the nation's oldest baseball parks; the Cubs' history traces back to 1 of the 8 original teams that established the National League in 1876; the Bears also played football here for five decades.

Theme 3: Expressing Cultural Values

Educational and Intellectual Currents (Public and Private Schools, Libraries, Colleges and Universities)

Visual and Performing Arts (Painting, Sculpture, Music, Dance, Stage Theater, Photography and Cinema)

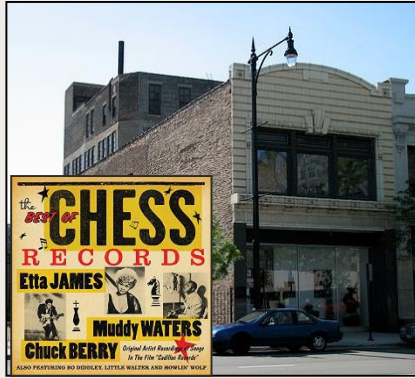
Literature (Chicago School Realism, Muckraker Journalism, Chicago Black Renaissance)

Mass Media (Newspapers, Radio, Television)



Crown Hall

Designed by Bauhaus architect Ludwig Mies van der Rohe and completed in 1956, Crown Hall serves as studio space for the Illinois Institute of Technology's departments of architecture, planning, and design.



Chess Records

Founded by two Jewish immigrants from Poland, this Chicago record label gained international recognition for launching the careers of some of the most influential Blues and Rock n' Roll musicians.



Carl Sandburg House

Known for his works which celebrated ordinary working class individuals and the places they inhabit; Sandburg lived in an apartment in this wood-frame house in Ravenswood when writing his ground-breaking poem "Chicago".



Tribune Tower

In addition to its architecture, the Tribune newspaper and publishing corporation has been important to the City's economy and development.

Theme 3: Expressing Cultural Values (Continued)

Architecture, Landscape and Urban Design

- Significant building types, styles, architects and areas
- Important landscapes, both within the Chicago Park District system and on privately owned land
- World's Columbian Exposition, the Burnham Plan of Chicago, the City Beautiful Movement, Planned Industrial Communities, Urban Renewal, 1923 and 1957 Zoning Changes, Post-War Transformation of the Loop



On Leong Merchants Association Headquarters to local business associations, the building's design was derived from the architecture of the Kwangtung district of China, the ancestral region of many of Chinatown's early residents.



Michigan Avenue Bridge and Esplanade

One of the best urban spaces in the nation and an important recommendation of the 1909 *Plan of Chicago*. This intersection has been further activated through the completion of the downtown riverwalk.



Alta Vista Terrace District

A row of historic townhomes designed as a grouping and designated as a unified district. This block is significant for both its historic styles of architecture and the rowhouse building typology.

Theme 4: Shaping the Political Landscape

Parties, Protests, and Movements (Abolition, Abraham Lincoln and the Republican Party, Women's Suffrage, Prohibition and Temperance, Civil Rights, LGBT Rights Movements)

Governmental Institutions (City Government, Police and Fire Departments, Public Schools, Public Housing)

Military Institutions (effect of US Wars in Chicago's history)



Site of the John and Mary Jones House

John and his wife Mary Jones were central figures in the abolitionist movement, using their home on Edina Place (now South Plymouth Court) as a "station" on the Underground Railroad to help fugitive slaves find freedom from the 1850s-70s.



Carl Schurz High School

One of 40 public schools designed by Dwight Perkins (Chicago Bd. of Ed. architect, 1905-1910); courses focused on manual arts including textile looming, bookbinding and drafting; served as a community center outside of school hours



Soldiers' Home

Chicago's last surviving building with a direct association to the Civil War is located on 35th Street near Lake Shore Drive. Originally a hospital for convalescent soldiers, it later served as a home for disabled Union Army veterans.

Theme 5: Developing the Economy

Extraction and Production (Agriculture, Lumber, Clothing and Garment Manufacturing, Printing and Publishing, Pullman Palace Car Co., Brewing, Steel, Building Materials, Pharmaceuticals Chemical, Automobiles, Jewelry)

Distribution and Consumption (Meatpacking, Mail Order Retailing, Department Stores, Food and Grocery Wholesale, Restaurants and Taverns)

Transportation and Communication (Maritime Navigation, Railroads, Bridges, Street Grade Raising, Public Transit, Automobile, Aviation)



Printing House Row District

Built up by printing and publishing firms who constructed facilities near the Dearborn Street railroad station (built 1885). The area's unusual street pattern of long narrow blocks resulted in buildings that admitted a maximum amount of light, which was necessary for engraving and typesetting work.



Sears, Roebuck and Company Administration Building

From its founding in 1894, Sears grew rapidly to become one of the country's largest purveyors of goods to small town and rural America, as well as one of Chicago's most important companies.



Navy Pier

Built as the Municipal Pier to handle passenger boats as well as intra-lake and inter-lake commerce, which was substantial to the City's economy in the 1920s. The history of transport along Lake Michigan is often overlooked given the dominance of rail traffic in Chicago.

Theme 5: Developing Chicago's Economy (Continued)

Workers and Work Culture (Pullman, Workplaces, Working Class Districts)

Labor Organizations and Protests (Strikes and Organization)

Exchange and Trade (Banking, Finance, Commodities, Insurance, mid-20th Century Corporations)

Governmental Policies and Practices (Works Progress Administration)



Pullman District

One of the 1st planned industrial communities in the U.S.; designed in the 1880s by architect Solon Beman for industrialist George Pullman with the goal of harmonizing living and working conditions while eliminating labor unrest. The Pullman district was bestowed National Monument status in February, 2015.



Site of the Haymarket Tragedy

A decade of strife between labor and industry culminated here in 1886 when a group confrontation resulted in the tragic death of both workers and policemen.



City Hall-County Building

The monumental, Classical Revival-style exterior of the present structure, which was designed to be a functional and efficient office building, symbolizes the strength, dignity, and vigor of the governmental functions it contains.

Theme 6: Expanding Science and Technology

Experimentation, Invention and Research
(Physics, Museum of Science and Industry, Steel Frame Construction)

Medicine (Hospitals and related resources)

New Technologies Impact Health and Lifestyle
(Sanitary Water Supply)



Reliance Building

The Reliance building is distinctive for its early use of steel-frame construction, architectural terra cotta, and large plate glass windows in an arrangement that would become known as “the Chicago window.” Completed in 1895, it is recognized as the direct ancestor of today's glass-and-steel skyscrapers.



Cook County Hospital

Completed in 1914, this Beaux-Arts medical facility exemplifies the vital role of public hospitals in providing medical care to the poor throughout the history of Chicago and Cook County.



Old Chicago Water Tower District

Built in tandem with Ellis Sylvester Chesbrough's 1867 tunnel below Lake Michigan, this public utility network vastly improved the hygiene of the city's water supply.

Theme 7: Transforming the Environment

Manipulating the Environment and its Resources (Reversal of the Flow of the Chicago River)

Protecting and Preserving the Environment (Alfred Caldwell Lily Pool)

Adverse Consequences and Stresses on the Environment (The Great Chicago Fire)



Site of the Origins of the Illinois & Michigan Canal
The Canal made reversal of the flow of the Chicago River possible which in turn enhanced the safety of the City's water supply.



Alfred Caldwell Lily Pool
One of the most important historic landscapes in the City, designed by Prairie School designer Alfred Caldwell.



Site of the Origins of The Chicago Fire
Many designated Chicago Landmarks have a historic context related to this disaster and the work to rebuild.

Theme 8: Changing Role of the U.S in the World

International Relations (World's Columbian Exposition, Site of the First Nuclear Chain Reaction)

Commerce (Chicago Board of Trade, Fulton Market)

Expansionism and Imperialism (Fort Dearborn)

Immigration and Emigration Policies (Jane Addams Hull House)



Museum of Science and Industry / Statue of the Republic

These two landmarks represent the 1893 World's Columbian Exposition, which showcased innovations in art, science and culture to a global audience.



Site of Fort Dearborn

When constructed in 1803, Ft. Dearborn was the farthest outpost of the United States on its western frontier. Located at a transportation link between the Great Lakes and the Mississippi River, it facilitated Chicago's growth as a center of trade and non-native settlement.



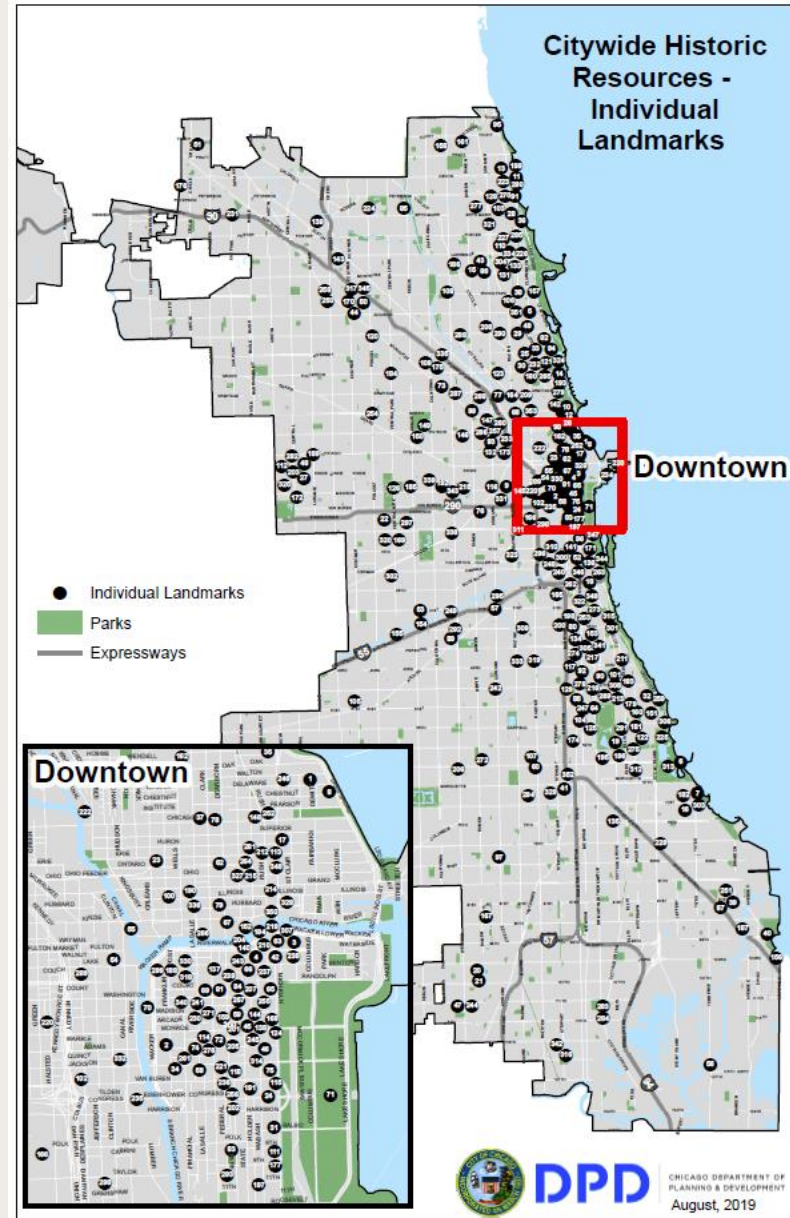
Site of the First Nuclear Chain Reaction

December 2, 1942 marked the beginning of the atomic age following this successful physics experiment. The Henry Moore sculpture installed at the site was dedicated in 1967.

Thematic Framework Analysis for Chicago Landmarks

A complete list and analysis of each Chicago Landmark is available online and will be updated annually.

Maps identifying locations of all 353 extant individual Chicago Landmarks and all 60 Chicago Landmark Districts are available online and will be updated annually.



Chicago Landmarks - Analysis of Local Landmarks Using National Park Service Historic Themes Model

Individual Landmarks and Landmark Districts designated as of August, 2019

Landmark	Year Constructed	Address*	Landmark Type	Designated	Theme: Peopleing	Theme: Institutions	Theme: Culture	Theme: Politics	Theme: Economy	Theme: Technology
227 East Walton Place Apartment Building	1956	227 E Walton Place, Chicago IL	Individual	6/6/2012						
300 West Adams Street Office Building	1927	300 W Adams Street, Chicago IL	Individual	5/13/2009						
333 North Michigan Building	1928	333 N Michigan Avenue, Chicago IL	Individual	2/7/1997						
35 East Wacker Building / Jewelers' Building	1925-1927	35 E Wacker Drive, Chicago IL	Individual	2/9/1994					1	
42nd Precinct/Town Hall Police Station	1907	3600 S Halsted Street, Chicago IL	Individual	9/21/2013		1				
63rd Street Bathing Pavilion	1919	6300 E Hayes Drive, Chicago IL	Individual	12/8/2004		1	1			
6901 Ogelsby Cooperative Apartment Building	1928-1929	6901 S Ogelsby Avenue, Chicago IL	Individual	9/10/2008						
860-880 Lake Shore Drive	1949-1951	860 N Lake Shore Drive, Chicago IL	Individual	6/10/1996						
Abbott (Dr. Wallace C.) House	1891; 1906	4605 N Hermitage Avenue, Chicago IL	Individual	3/1/2006					1	1
Jessie and William Adams House	1901	9526 S Pleasant Avenue, Chicago IL	Individual	6/16/1994						
Jane Addams' Hull House and Dining Room	1856; 1905	800 S Halsted Street, Chicago IL	Individual	6/21/1994		1	1			
Alfred Caldwell Lily Pool	1936-1938	North end of Lincoln Park Zoo at Fullerton Parkway, Chicago IL	Individual	11/6/2002		1	1		1	
All Saints Church and Rectory	1883	4550 N Hermitage Avenue, Chicago IL	Individual	12/27/1982		1	1			
Allerton Hotel	1922	701 N Michigan Avenue, Chicago IL	Individual	4/29/1998						
American Book Company Building	1912	320 E Cermak Road, Chicago IL	Individual	7/29/2009					1	1
American School of Correspondence	1907	850 E 98th Street, Chicago IL	Individual	4/25/1995			1			
American System-Built Houses (1 of 2)	1917	10410 S Hoyne Avenue, Chicago IL	Individual	7/13/1994						
American System-Built Houses (2 of 2)	1917	10541 S Hoyne Avenue, Chicago IL	Individual	7/13/1994						
Anshe Sholom Synagogue Building (former)	1924-1926	754 S Independence Boulevard, Chicago IL	Individual	6/25/2014			1	1		
Assumption School	1899	319 W Erie Street, Chicago IL	Individual	7/9/2003	1	1	1			
Auditorium Building	1886-1890	430 S Michigan Avenue, Chicago IL	Individual	9/15/1976						
Emil Bach House	1915	7415 N Sheridan Road, Chicago IL	Individual	9/28/1977						
Myron Bachman House	1948	1244 W Carmen Avenue, Chicago IL	Individual	12/7/1992					1	
Belle Shore Apartment Hotel	1928-1929	1062 W Bryn Mawr Avenue, Chicago IL	Individual	11/6/2002						
Belmont-Sheffield Trust and Savings Bank Building (former)	1928-1929	1001 W Belmont Avenue, Chicago IL	Individual	7/9/2008						