



**Damen Elston Fullerton  
Reconstruction,  
Intersection Improvements  
CDOT Project B-1-501**



# Bird's Eye View of Existing



## INTRODUCTION

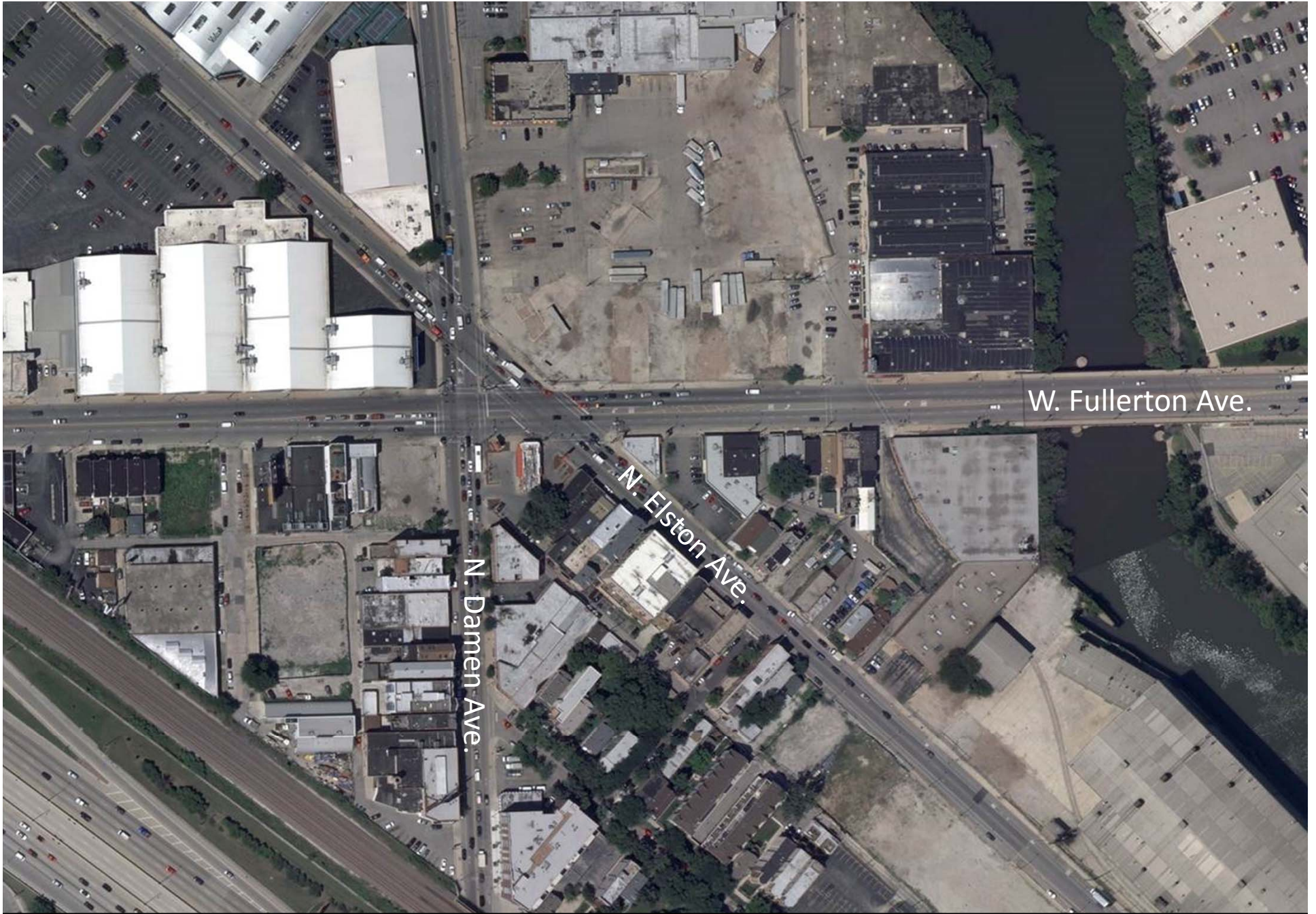
- This project is part of the City's Building a New Chicago initiative in conjunction with the Illinois Department of Transportation and the Federal Highway Administration.
- CDOT was tasked to find a viable alternative to Damen Elston Fullerton intersection as it exists today.
- It is and has been consistently identified as one of the top ten locations for crashes in the City of Chicago for over 20 years.
- Also, it can take up to 7 minutes to get through the intersection in a car or other vehicle.
- Over 70,000 vehicles pass through this intersection on a given day. Comparatively, only 40,000 vehicles travel through Belmont / Damen. The volume of vehicles, and ever increasing bike and pedestrian traffic in the area, required an innovative solution.
- The City and State pursued this improvement after reviewing many alternatives, including constructing a tunnel or overpass on Fullerton.
- This improvement required acquisition of multiple properties, including part of the Vienna Beef parking lot, the former Whirlyball building, the former Suntimes warehouse south of Fullerton on the river, Dunkin Donuts and part of Midtown Tennis Club's east building.
- While the acquisition required demolition of several buildings and relocation of multiple businesses, we believe this plan is the best solution for the following reasons:

# Bird's Eye View of Proposed



## BEST SOLUTION...

- It provides full access along the Fullerton Ave., as opposed to the Fullerton bridge or tunnel options.
- The intersections are much simpler and spread further apart, improving the flow of traffic and creating safer, better functioning intersections with substantially reduced delays.
- A protected bike lane and wider sidewalks will be provided along the new roadway, and improved bike and pedestrian access will be provided within the project area where possible.
- The existing Elston south of Fullerton (to be designated Elston Court) will be improved with wider sidewalks, new lighting, trees in grates, and improved drainage
- Lastly, we anticipate the improvement will promote economic growth goals of the area, creating a much improved traffic situation with increased opportunities for access along the new roadway, and in the adjacent areas.
- Following are representations of the proposed traffic impacts and estimated schedule, which is subject to change.



Damen Elston Fullerton

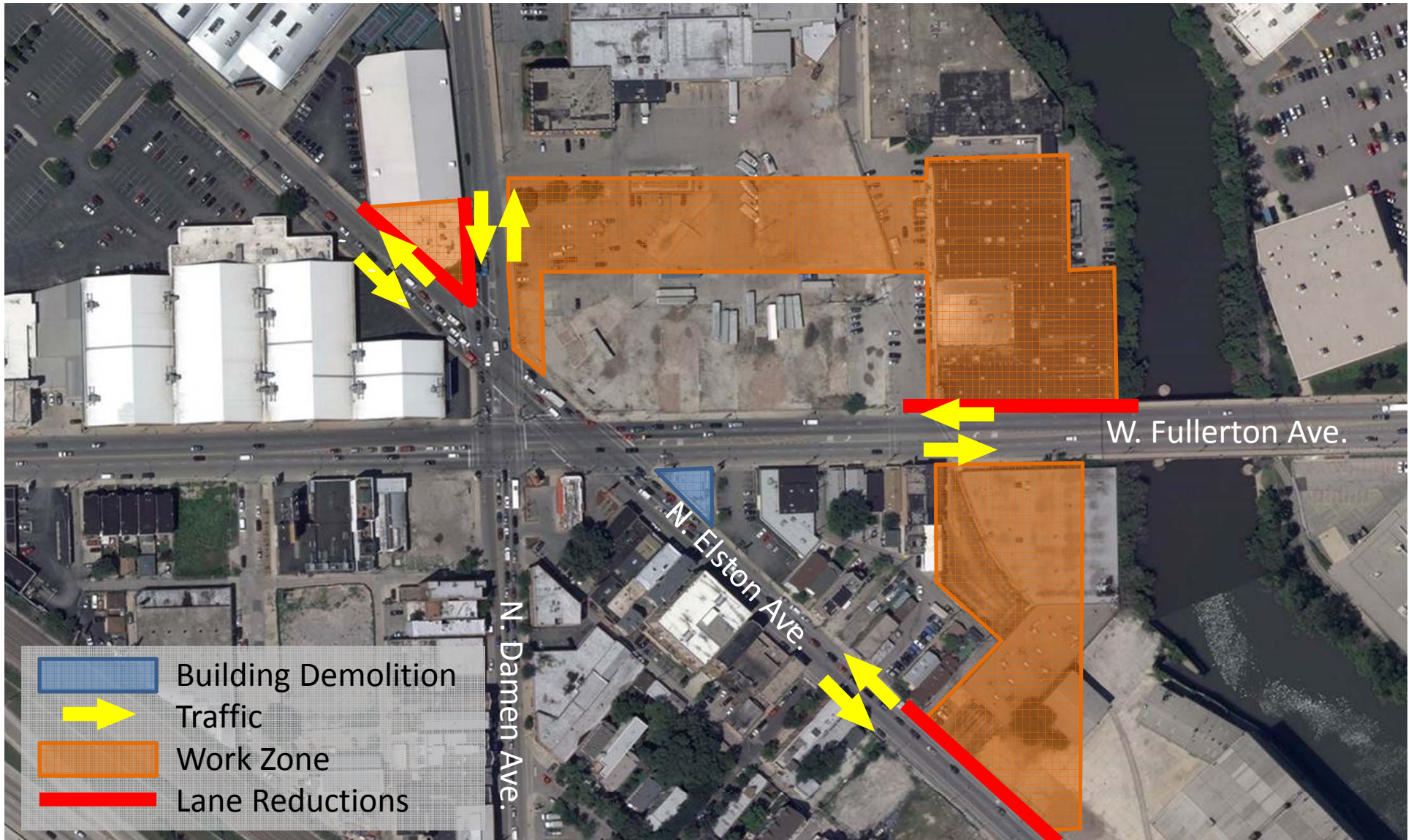
Existing Site



## Damen Elston Fullerton

Phase I – June through August 2015

1. Demolition of Remaining Buildings
2. Lane Closures on N. Damen Ave., N. Elston Ave., W. Fullerton Ave.
3. Utility Work on Elston Reroute



## Damen Elston Fullerton

Phase II – August through September 2015

1. Building Demolition Completed
2. Lane Closures on N. Damen Ave., N. Elston Ave., W. Fullerton Ave.
3. Utility Work and Road Construction continues on Elston Reroute

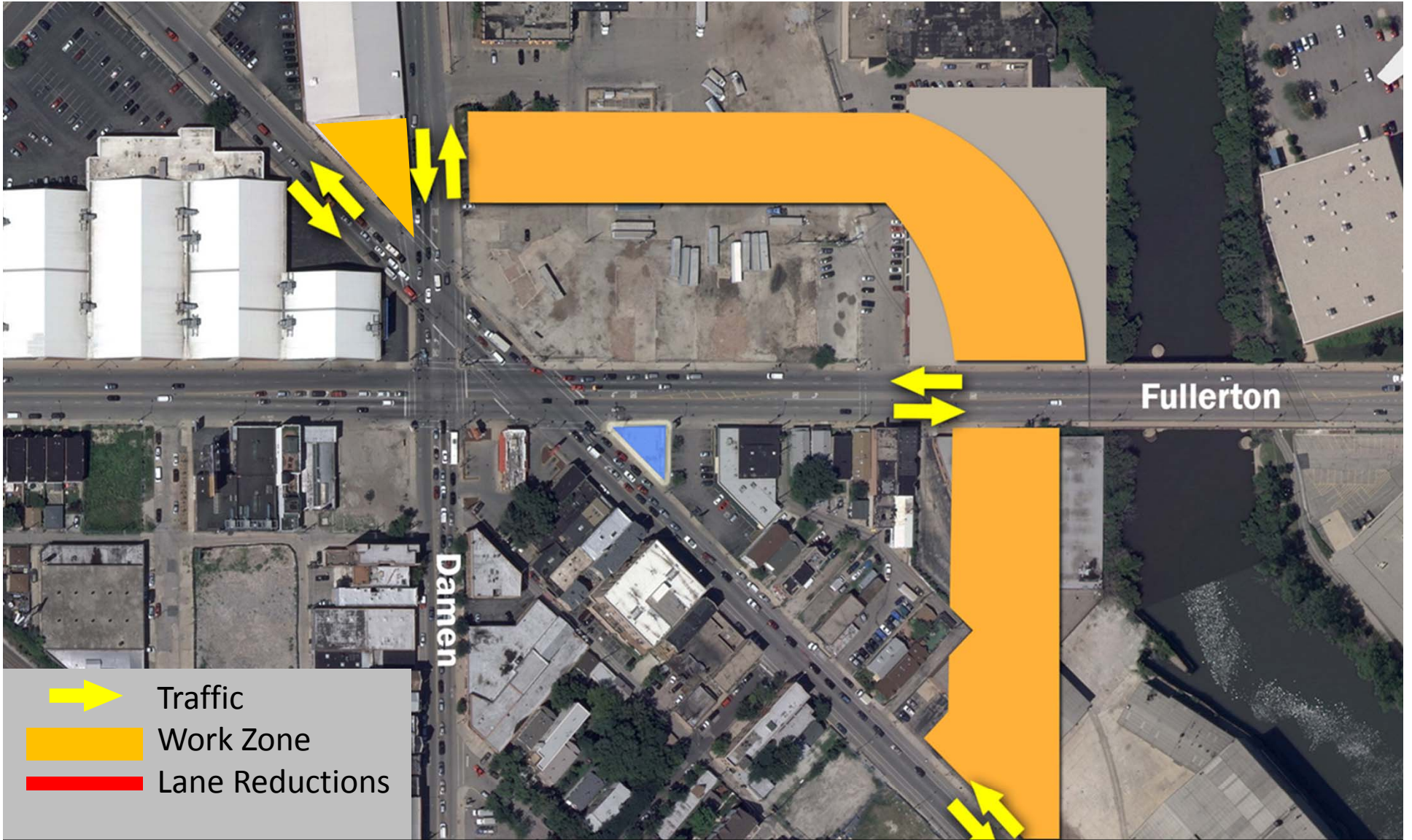




## Damen Elston Fullerton

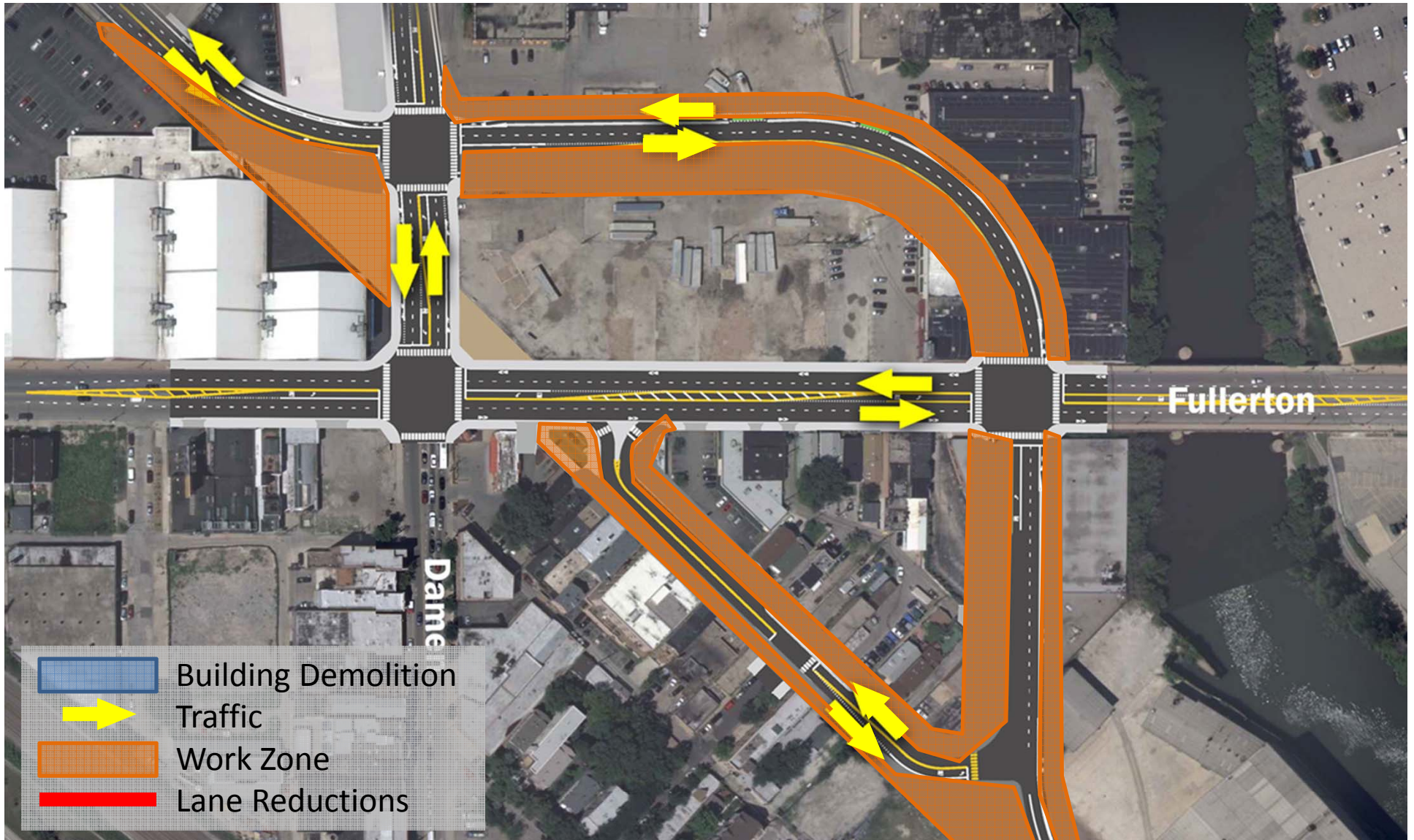
Phase III/IV – September through December 2015

1. Lane Closures on N. Damen Ave. and N. Elston Ave.
2. Utility Work and Road Construction continues on Elston Reroute



Damen Elston Fullerton

Winter Work 2015-2016  
Work mainly offline



## Damen Elston Fullerton

Phase V – Spring 2016

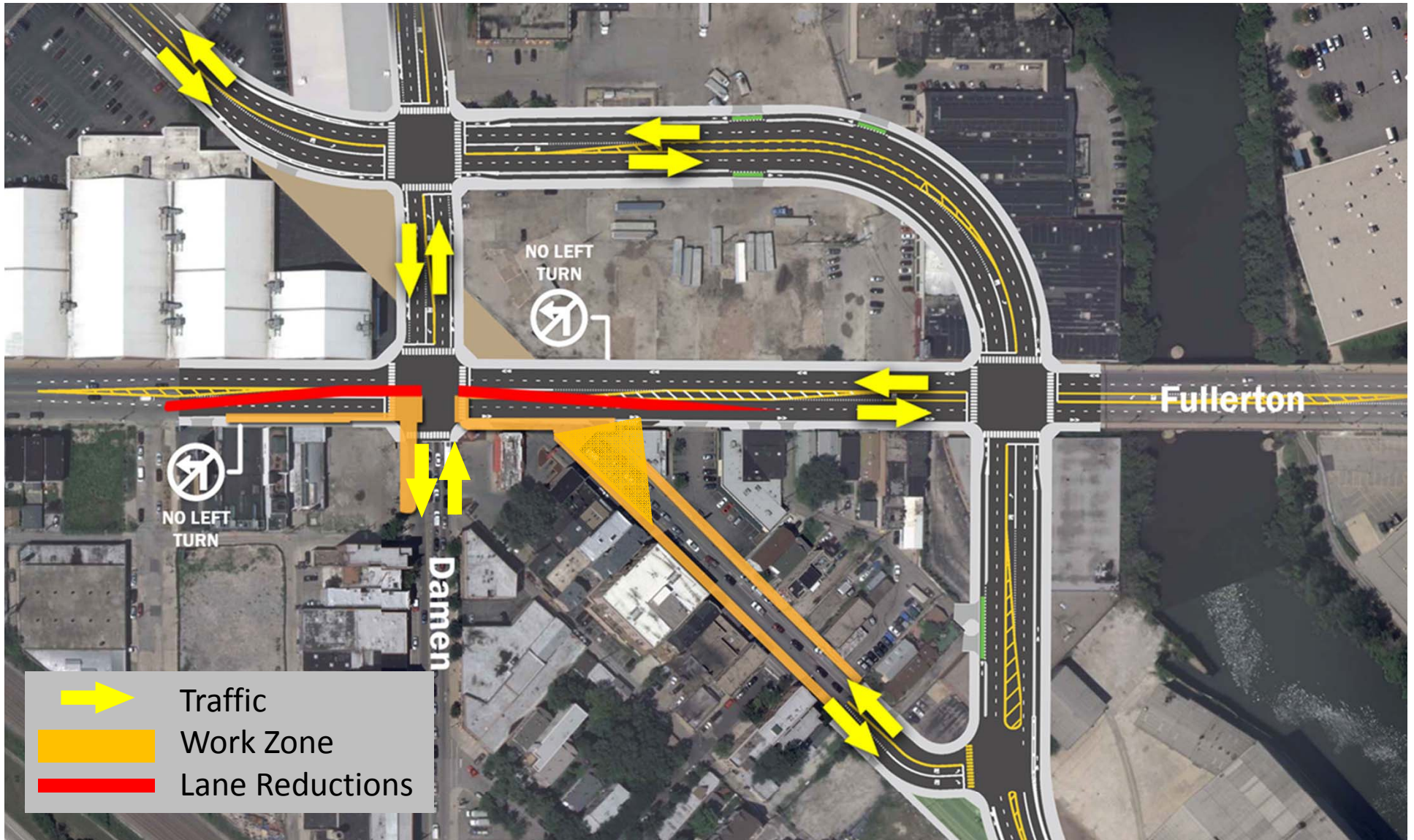
1. Open new Elston Ave. (one lane in each direction initially)
2. Some utility work
3. Minimal traffic impact



## Damen Elston Fullerton

Spring/ Early Summer 2016

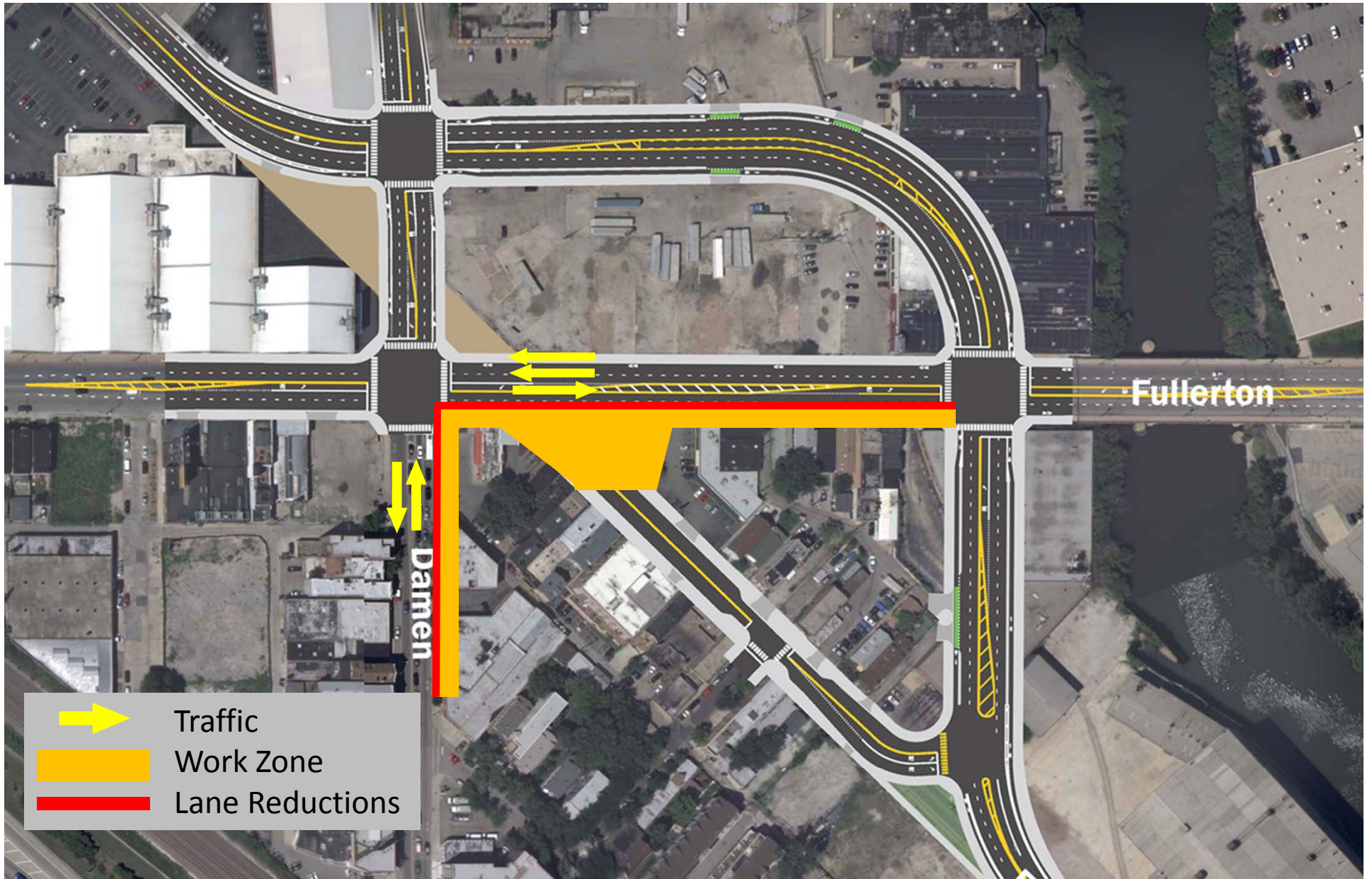
1. Lane Closures on Damen and Fullerton
2. Left Turns will be Detoured

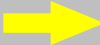



## Damen Elston Fullerton


Summer 2016

1. Lane Closures on Damen and Fullerton
2. Left Turns will be Detoured
3. Work on intersection of existing Elston and Fullerton



 Traffic

 Work Zone

 Lane Reductions

## Damen Elston Fullerton

Late Summer/ early Fall 2016

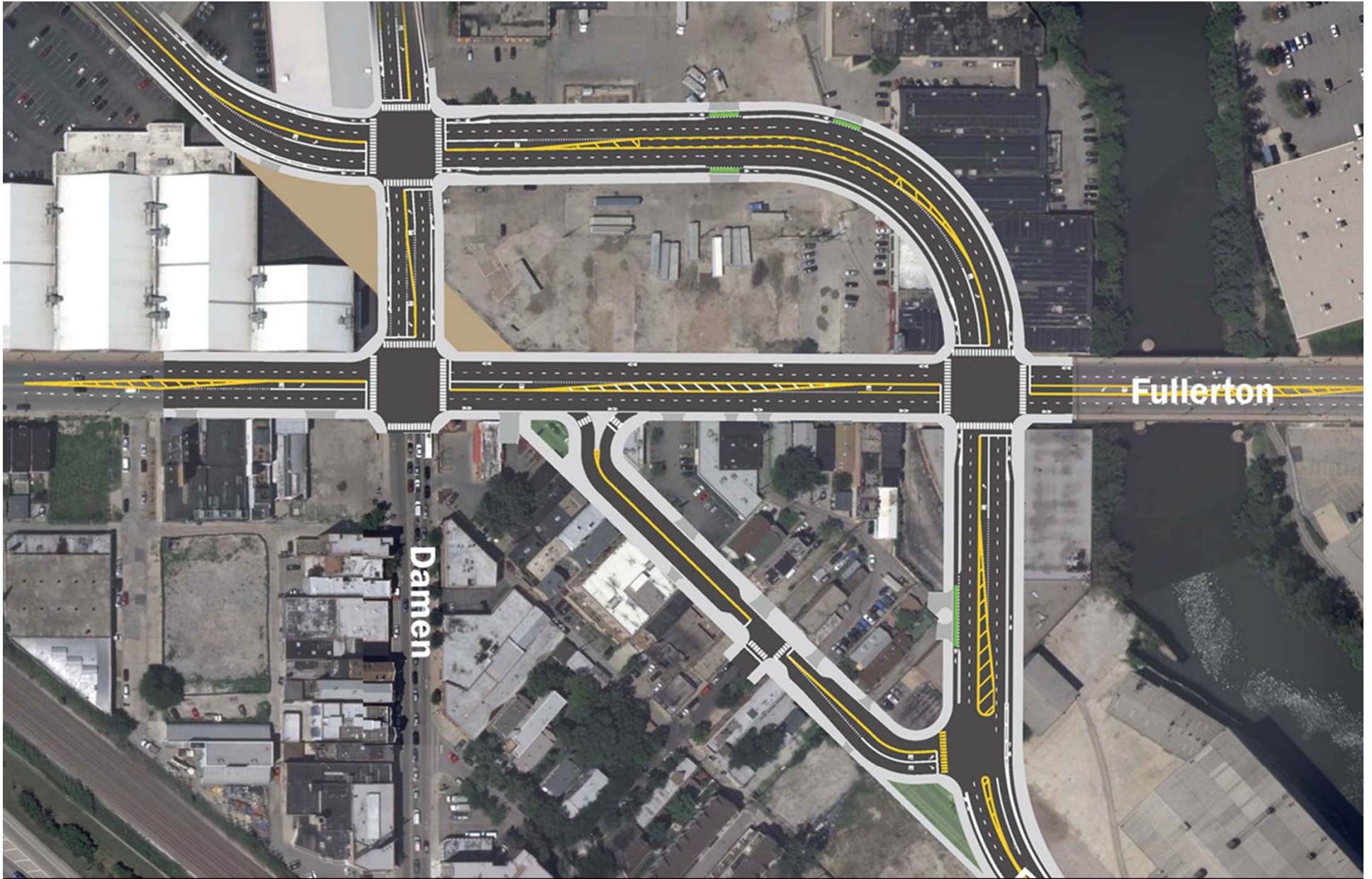
1. Fullerton and Damen Avenue lane closures for sidewalk/ lighting work
2. Existing Elston intersection with Fullerton construction



## Damen Elston Fullerton

Fall 2016

1. Reconstruction of Elston Court
2. Road closed or local traffic only during this stage

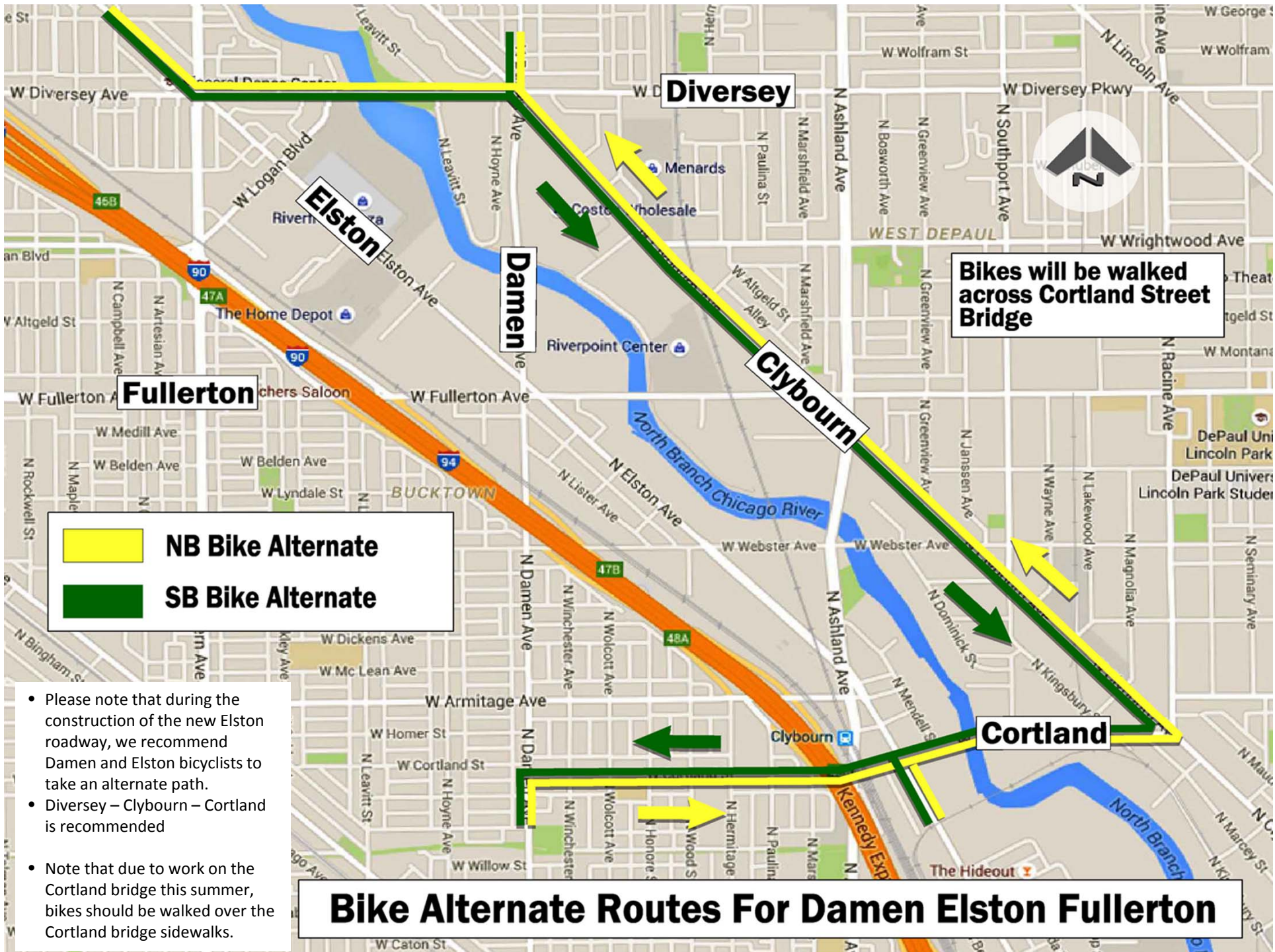


## Damen Elston Fullerton

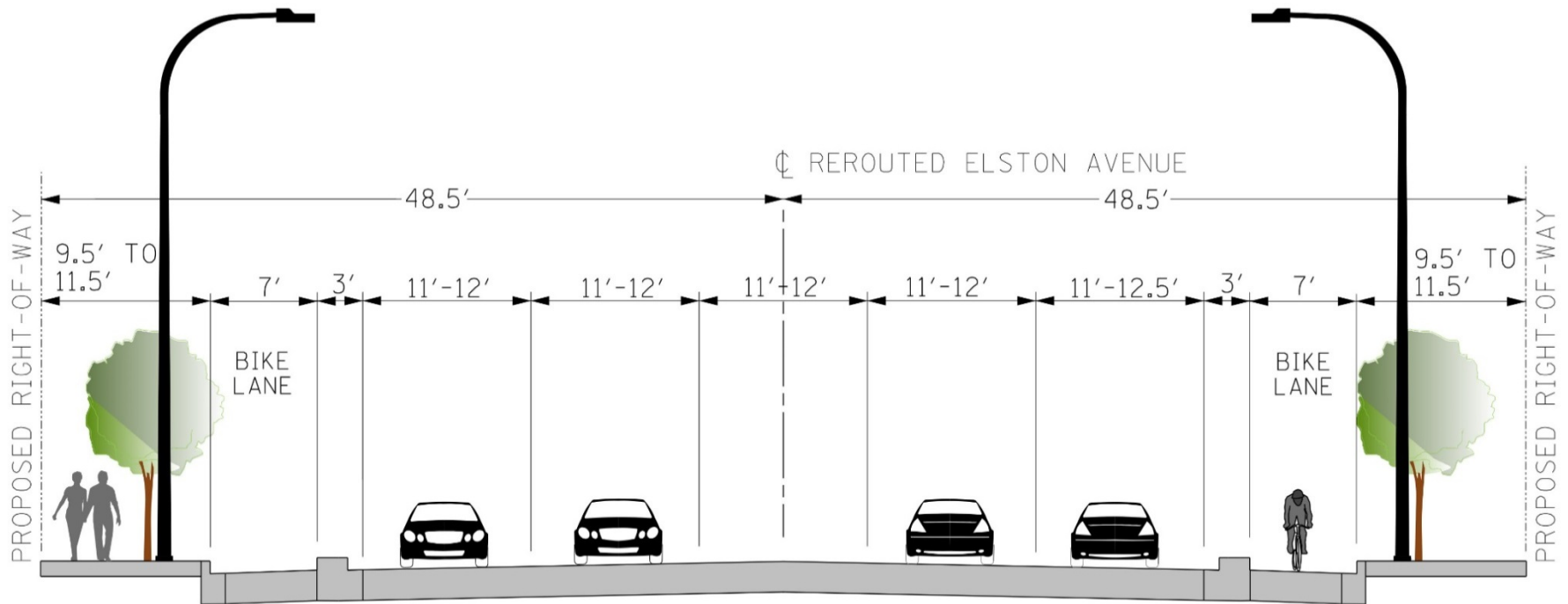
September to November 2016 (Completion)

1. Intermittent Lane Closures on all streets for resurfacing, landscaping, and final punchlist work.





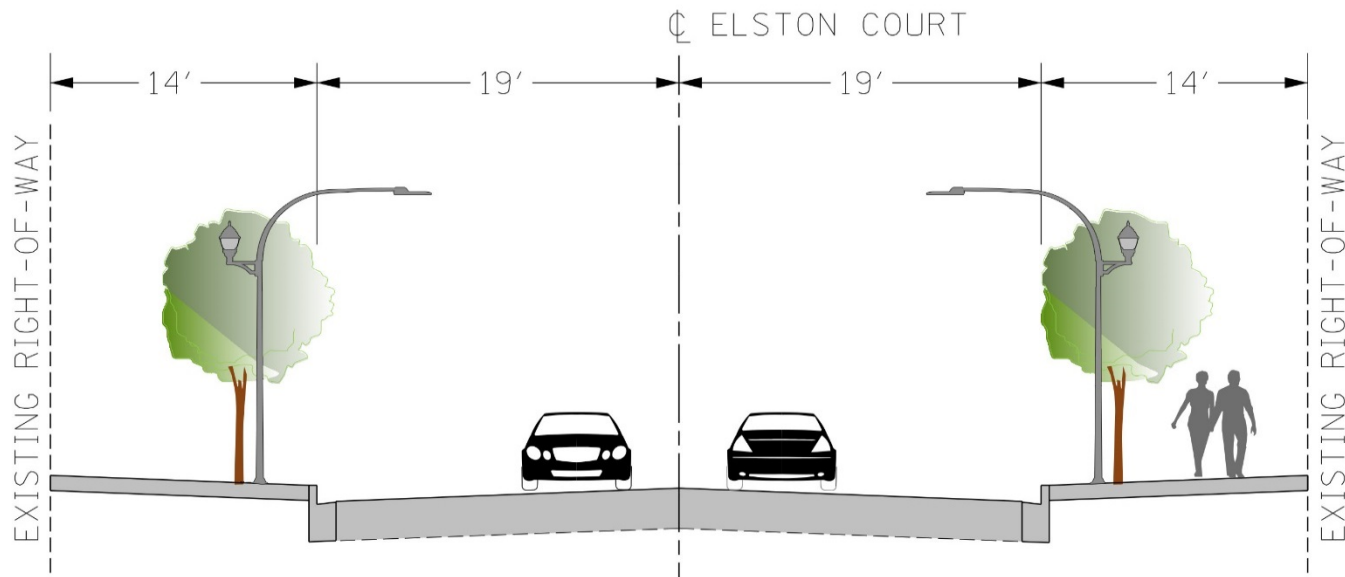
# Typical Section new N. Elston Avenue



## REROUTED N. ELSTON AVE.

TYPICAL PROPOSED CROSS SECTION  
(NOT TO SCALE)

# Typical Section N. Elston Court (previously N. Elston Avenue)



## ELSTON COURT

TYPICAL PROPOSED CROSS SECTION  
(NOT TO SCALE)

## Rendering of improved Damen/ Fullerton intersection



## Rendering of New Elston Avenue/ Elston Court Intersection



Looking North from Elston Av. towards Elston Ct.






**Thank you. Questions?**

For additional information please visit our

**Website:** [www.chicagodot.org](http://www.chicagodot.org)

 **Twitter:** @ChicagoDOT

 **Facebook:** [facebook.com/CDOTNews](https://facebook.com/CDOTNews)

