



Protecting Chicago: Phase III Re-Opening Metrics Update

June 19, 2020

(Analysis as of 6/12/2020)

CDPH COVID-19 Moving from Phase III to Phase IV starting June 3 2020

	Stop: May need to delay moving ahead	Caution: Pause and monitor	Go: Cautious progress	Go: Continued progress	Go: Advanced progress
Cases 7-day rolling daily average	Any sustained increase >14 days within phase	Increase 0-14 days	Stable or decrease 0-13 days w/o preceding increase	Stable or decrease 14-28 days	Stable or decrease >28 days and/or sustained <200 new cases per day (1 case per 10,000 persons)
Hospitalizations 7-day rolling daily average					
Deaths 7-day rolling daily average					
COVID Emergency department visits 7-day rolling daily average					
Positivity rate 7-day rolling daily average	>15% citywide	13-15%	10-13%	7-10%	<7%
Hospital system capacity 7-day rolling daily average	>1280 non-ICU beds >480 ICU beds >360 ventilators	>1000 non-ICU beds >400 ICU beds >300 ventilators	<1000 non-ICU beds occupied by COVID patients <400 ICU beds occupied by COVID patients <300 ventilators occupied by COVID patients		
Testing capacity 7-day rolling daily average	Unexplained decline in testing <4500 tests/day	Explained decline in testing <4500 tests/day	Stable testing >5% of residents per month (>4500 tests/day); or increase to >6500 diagnostic tests/day		
Response capacity	N/A	N/A	Initiate case investigation within 24h of assignment for 50% of cases	75% of cases	90% of cases



COVID-19 Confirmed Cases

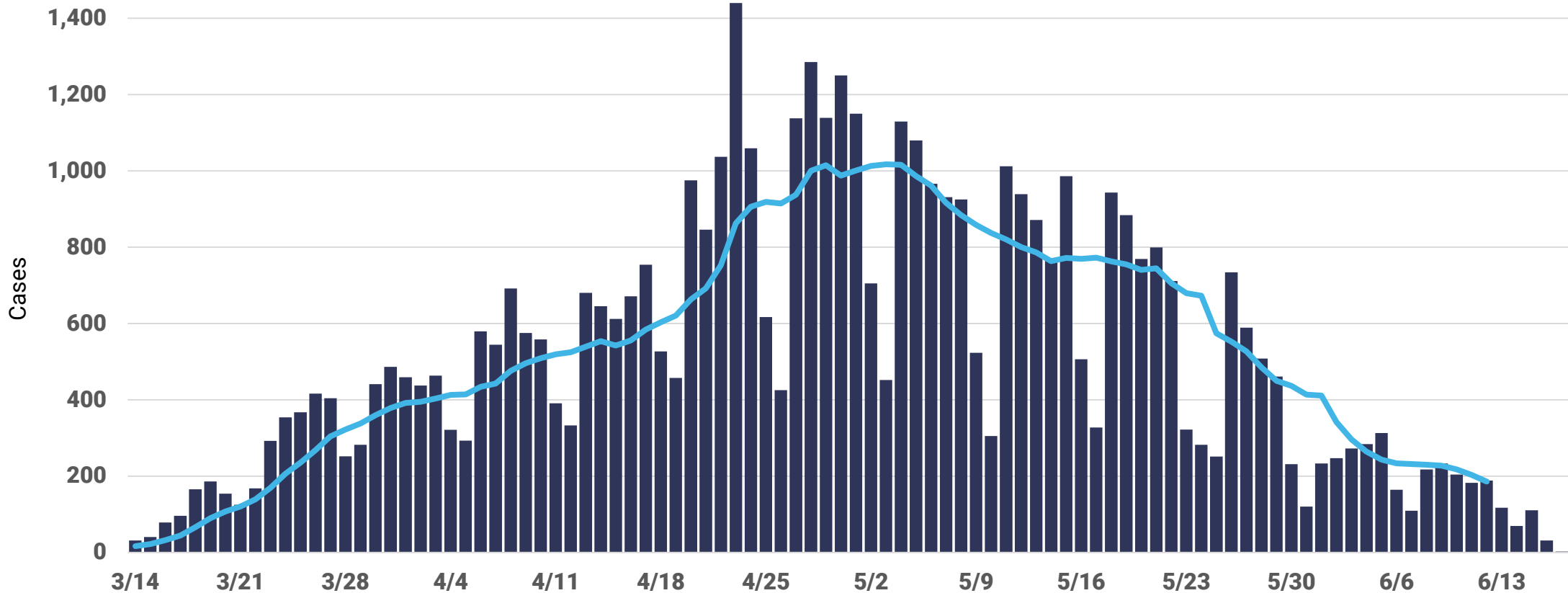
GO: CAUTIOUS PROGRESS

COVID-19 cases decreasing since June 3rd



COVID-19 cases, daily counts and rolling 7-day average, report date

Trend
Stable 7 days (5/14-5/21)
Decrease 22 days (5/21-6/12)



Daily COVID-19 cases with known specimen report date. *14-day incidence is calculated by summing all new cases in the most recent 14 day period and dividing by 14 days to find an average. Incidence gating rank is determined using 14-day average incidence/100,000 population. The gating rank categories are defined as follows. LOW (1-10); MODERATE (11-50); MODERATELY HIGH (51-99); HIGH (100+). Daily counts for most recent dates displayed are likely incomplete.

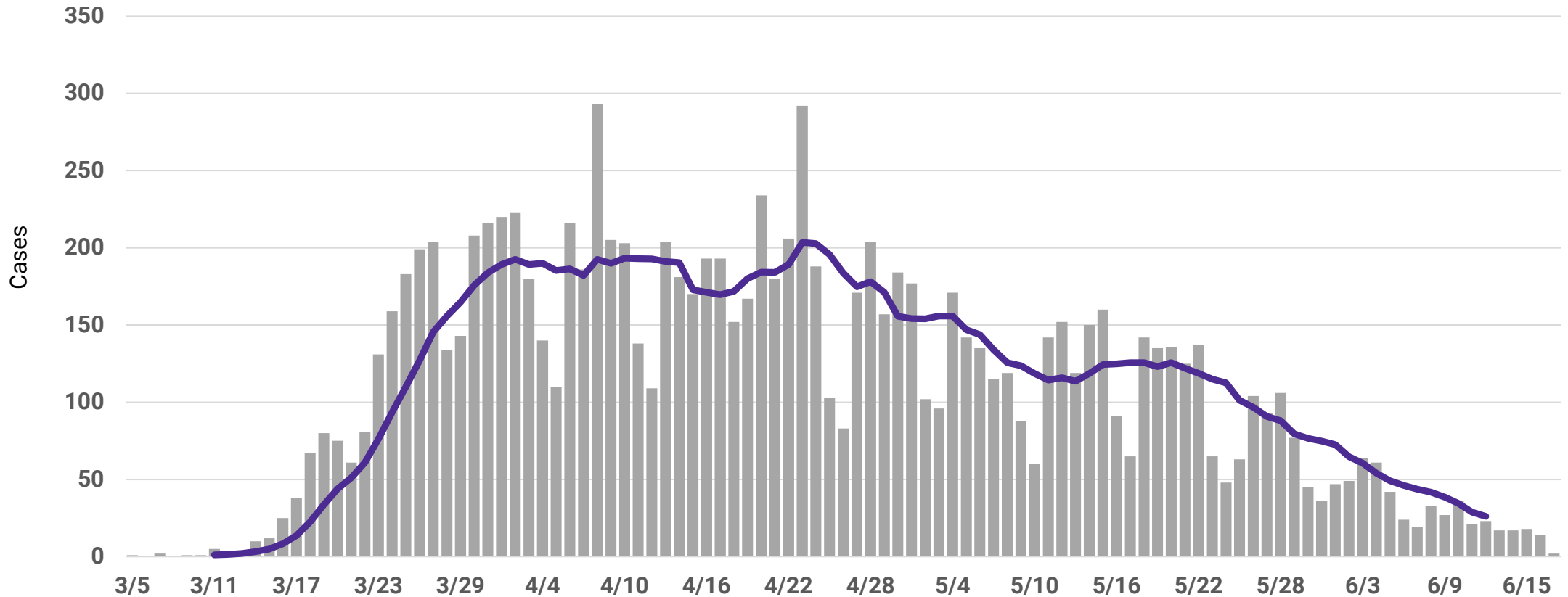
GO: CAUTIOUS PROGRESS

Black, non-Latinx cases decreasing since June 3rd



COVID-19 cases among Black, non-Latinx residents, daily counts and rolling 7-day average, report date

Trend	Stable 7 days (5/14-5/21) Decrease 22 days (5/21-6/12)
-------	---



Daily COVID-19 cases with known specimen report date and race/ethnicity information. Approximately 30% of cases used to calculate 14-day incidence are missing race/ethnicity information, therefore the reported 14-day incidence represents an undercount of true incidence. Daily counts for most recent dates displayed are likely incomplete *14-day incidence is calculated by summing all new cases in the most recent 14-day period and dividing by 14 days to find an average. Incidence gating rank is determined using 14-day average incidence/100,000 population. The gating rank categories are defined as follows. LOW (1-10); MODERATE (11-50); MODERATELY HIGH (51-99); HIGH (100+).

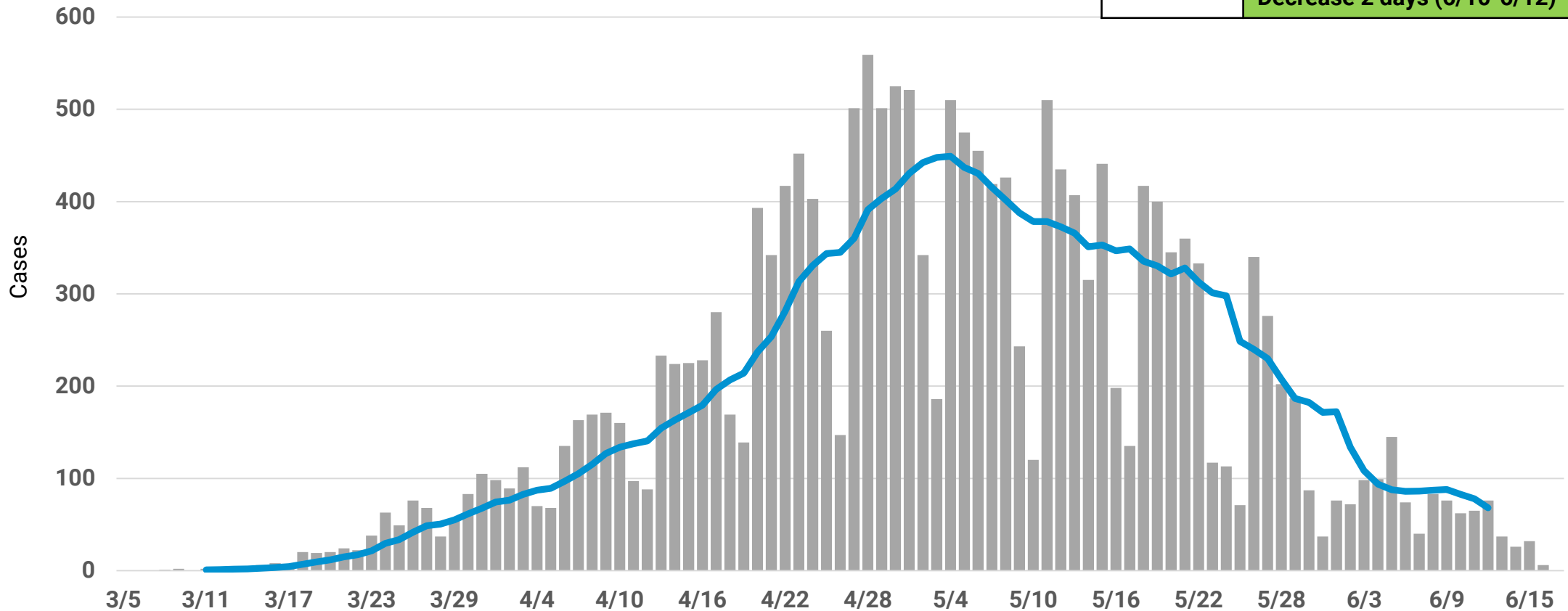
GO: CAUTIOUS PROGRESS

New Latinx cases stable or decreasing since June 3rd



COVID-19 cases among Latinx residents, daily counts and rolling 7-day average, report date

Trend	Decrease 21 days (5/14-6/4)
	Stable 6 days (6/4-6/10)
	Decrease 2 days (6/10-6/12)



Daily COVID-19 cases with known specimen report date and race/ethnicity information. Approximately 30% of cases used to calculate 14-day incidence are missing race/ethnicity information, therefore the reported 14-day incidence represents an undercount of true incidence. Daily counts for most recent dates displayed are likely incomplete *14-day incidence is calculated by summing all new cases in the most recent 14-day period and dividing by 14 days to find an average. Incidence gating rank is determined using 14-day average incidence/100,000 population. The gating rank categories are defined as follows. LOW (1-10); MODERATE (11-50); MODERATELY HIGH (51-99); HIGH (100+).

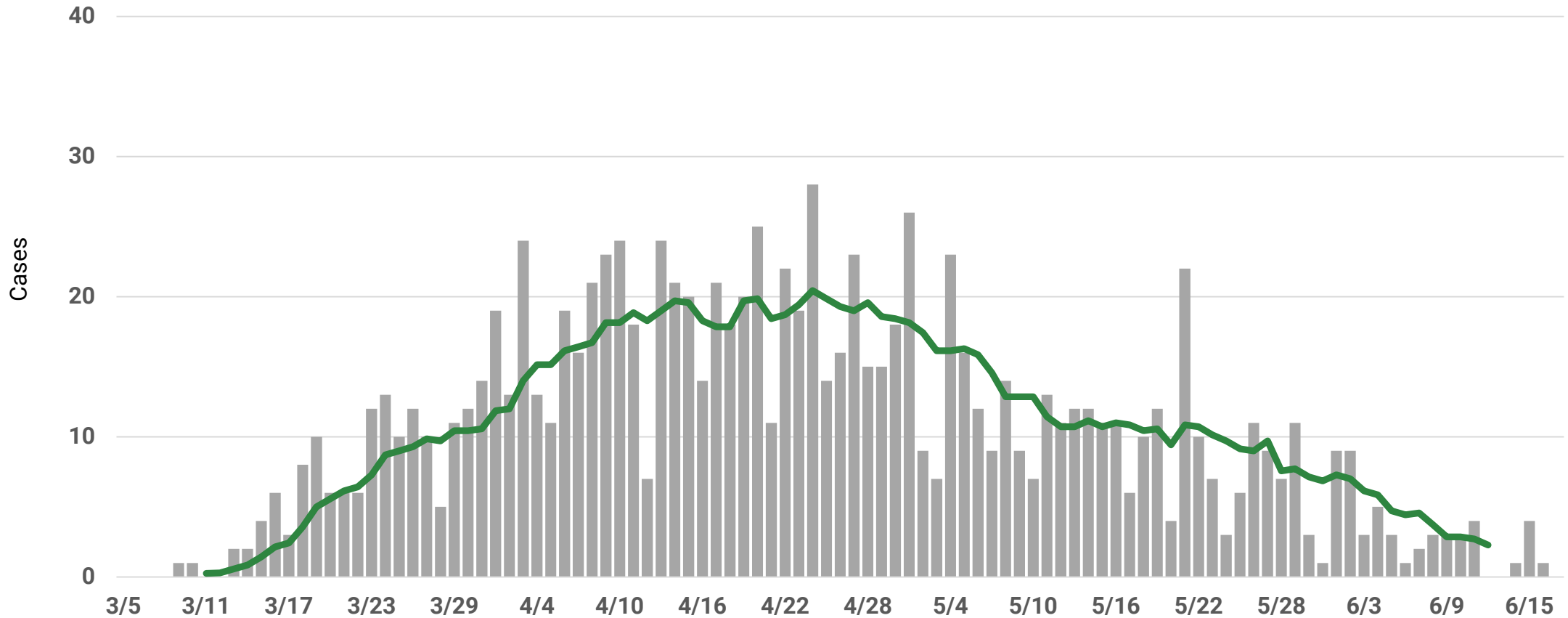
GO: CAUTIOUS PROGRESS

Asian, non-Latinx cases decreasing since June 3rd



COVID-19 cases among Asian, non-Latinx residents, daily counts and rolling 7-day average, report date

Trend	Decrease 29 days (5/14-6/12)
-------	------------------------------



Daily COVID-19 cases with known specimen report date and race/ethnicity information. Approximately 30% of cases used to calculate 14-day incidence are missing race/ethnicity information, therefore the reported 14-day incidence represents an undercount of true incidence. Daily counts for most recent dates displayed are likely incomplete *14-day incidence is calculated by summing all new cases in the most recent 14-day period and dividing by 14 days to find an average. Incidence gating rank is determined using 14-day average incidence/100,000 population. The gating rank categories are defined as follows. LOW (1-10); MODERATE (11-50); MODERATELY HIGH (51-99); HIGH (100+).

CAUTION: PAUSE AND MONITOR

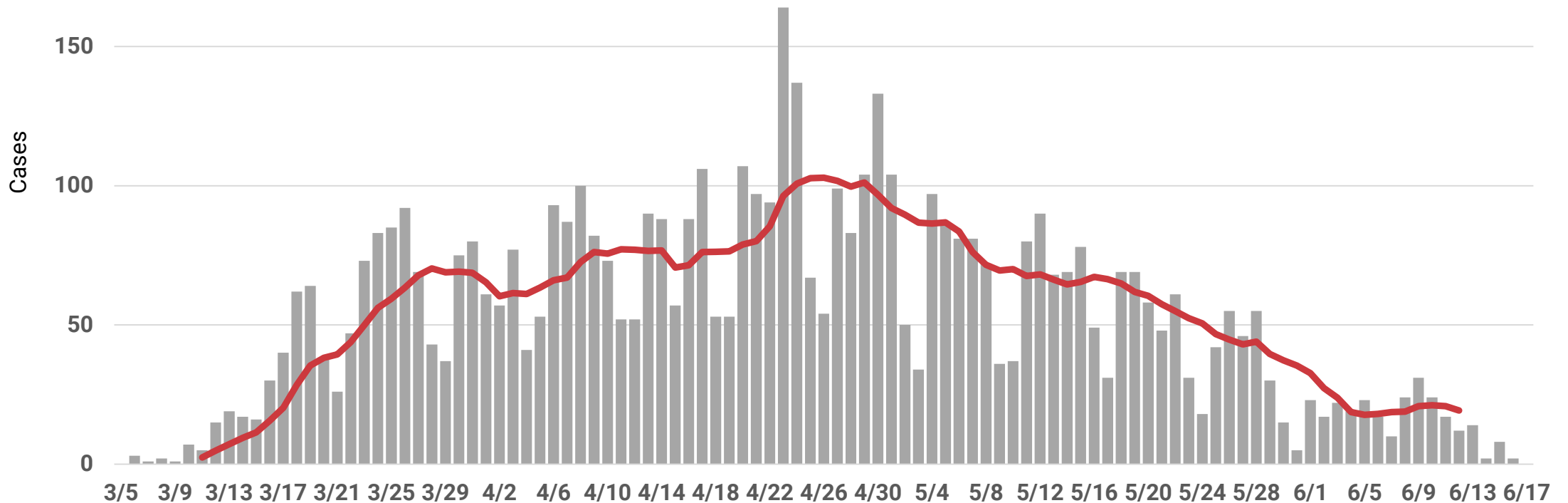
White, non-Latinx cases stable or increasing since June 3rd



COVID-19 cases among white, non-Latinx residents, daily counts and rolling 7-day average, report date

200

Trend	Stable 3 days (5/14-5/17)
	Decrease 19 days (5/17-6/5)
	Increase 5 days (6/5-6/10)
	Stable 2 days (6/10-6/12)



Daily COVID-19 cases with known specimen report date and race/ethnicity information. Approximately 30% of cases used to calculate 14-day incidence are missing race/ethnicity information, therefore the reported 14-day incidence represents an undercount of true incidence. Daily counts for most recent dates displayed are likely incomplete *14-day incidence is calculated by summing all new cases in the most recent 14-day period and dividing by 14 days to find an average. Incidence gating rank is determined using 14-day average incidence/100,000 population. The gating rank categories are defined as follows. LOW (1-10); MODERATE (11-50); MODERATELY HIGH (51-99); HIGH (100+).



COVID-19 Severe Outcomes

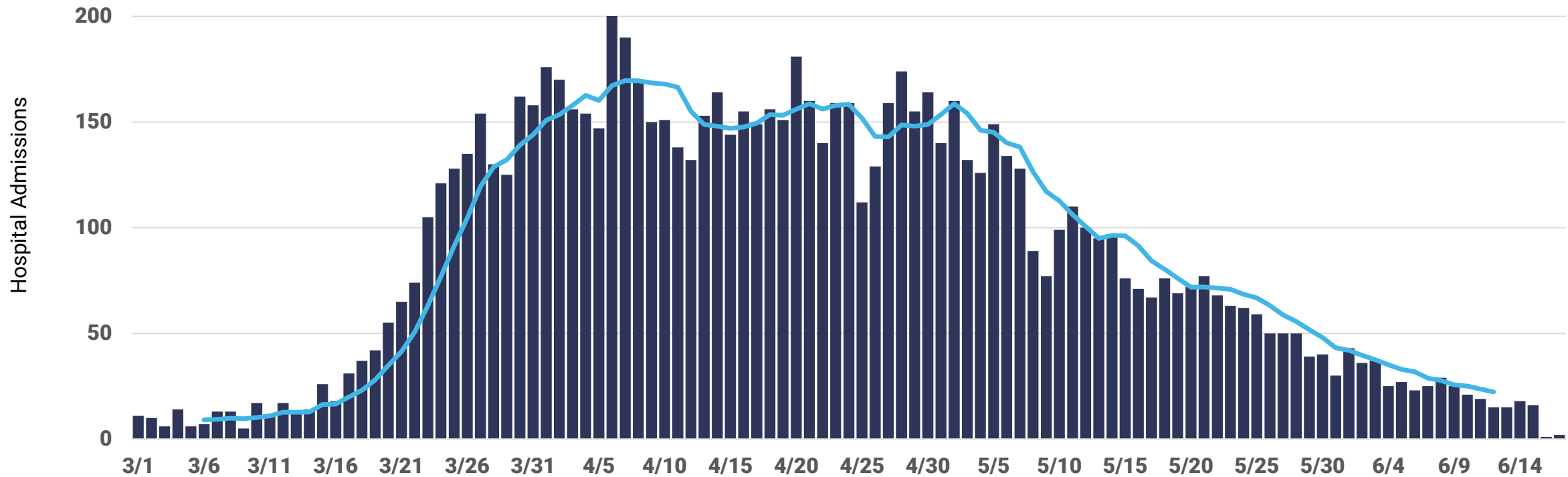
GO: CAUTIOUS PROGRESS

Daily COVID-19 hospital admissions decreasing since June 3rd



COVID-19 Hospital admissions, daily counts and rolling 7-day average, first known hospital admit date

Trend	Stable 2 days (5/14-5/16) Decrease 27 days (5/16-6/12)
-------	---



Hospitalizations are reported to CDPH by hospitals into I-NEDSS and ESSENCE and self-reported by patients via an online survey. Daily counts for most recent dates displayed are likely incomplete. Cases who are not indicated to have been hospitalized across any of the three data sources are assumed to not have been hospitalized. Six records with hospital admit dates from January and February 2020 are excluded from this chart.

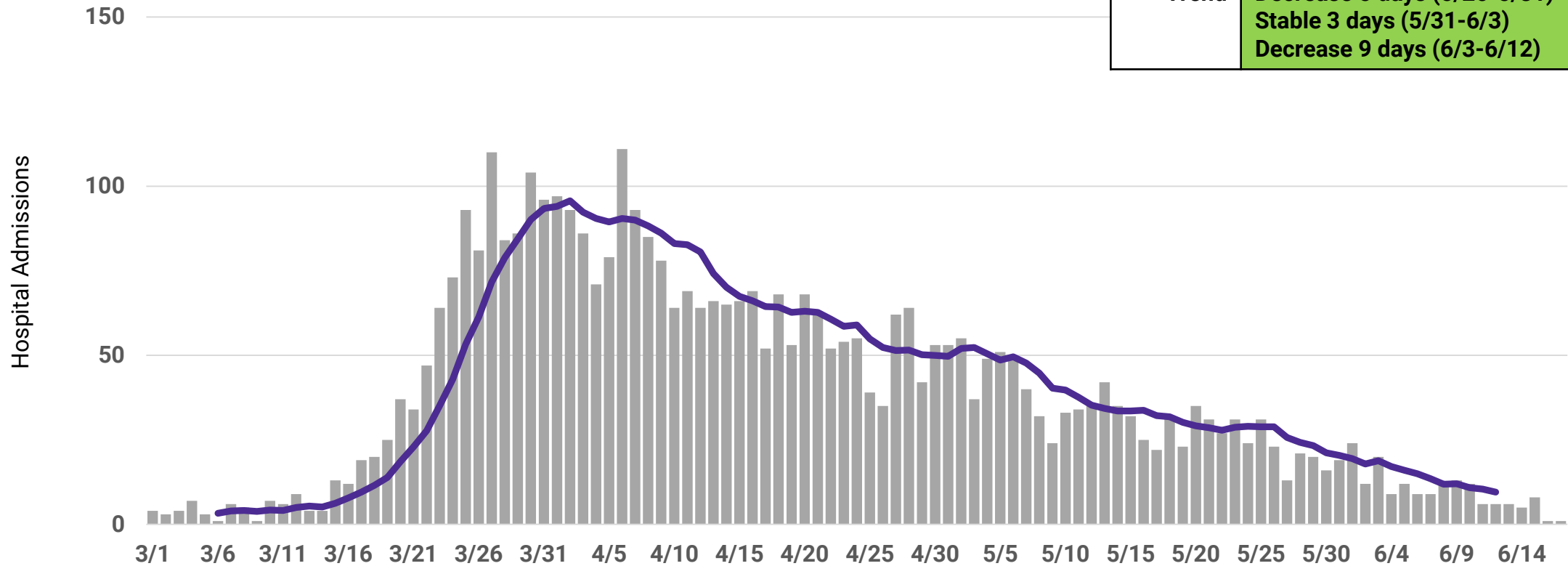
GO: CAUTIOUS PROGRESS

Black, non-Latinx hospital admissions decreasing since June 3rd



COVID-19 hospital admissions among Black, non-Latinx residents, daily counts and rolling 7-day average, first known hospital admit date

Trend	Decrease 8 days (5/14-5/22)
	Stable 4 days (5/22-5/26)
	Decrease 5 days (5/26-5/31)
	Stable 3 days (5/31-6/3)
	Decrease 9 days (6/3-6/12)



Hospitalizations are reported to CDPH by hospitals into I-NEDSS and ESSENCE and self-reported by patients via an online survey. Daily counts for most recent dates displayed are likely incomplete. Cases who are not indicated to have been hospitalized across any of the three data sources are assumed to not have been hospitalized. Six records with hospital admit dates from January and February 2020 are excluded from this chart.

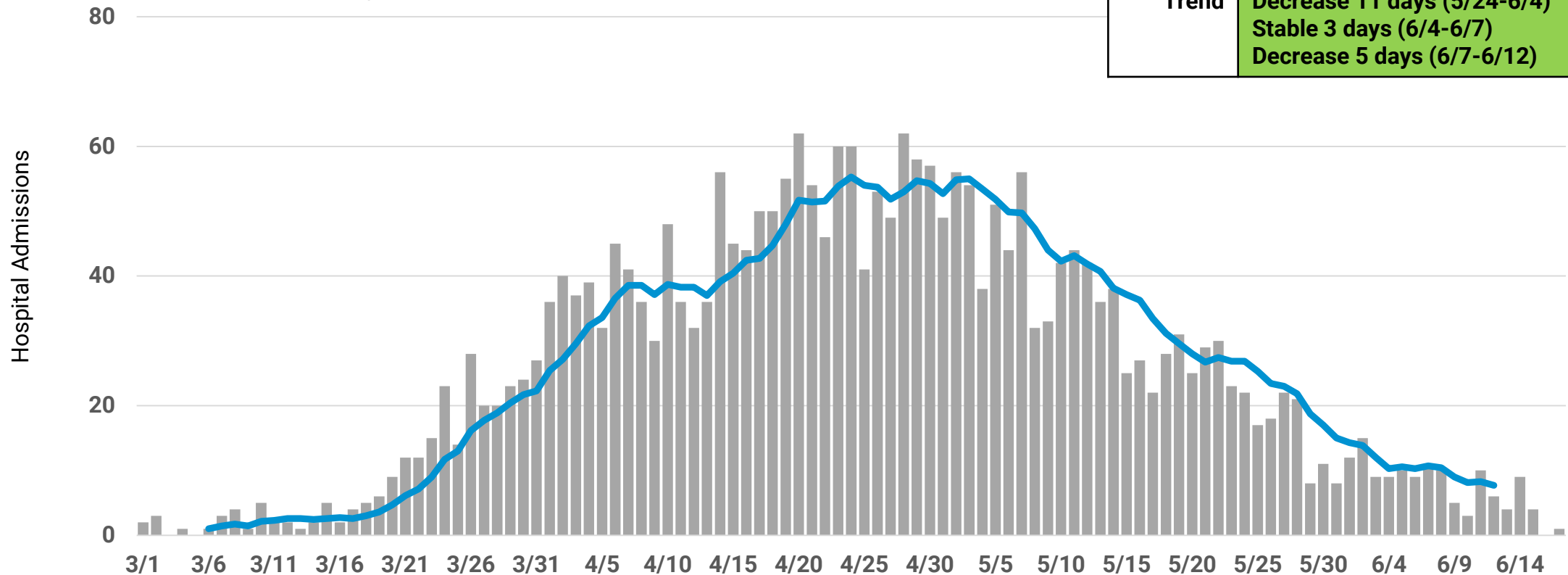
GO: CAUTIOUS PROGRESS

Latinx hospital admissions stable or decreasing since June 3rd



COVID-19 hospital admissions among Latinx residents, daily counts and rolling 7-day average, first known hospital admit date

Trend	Period
Decrease	7 days (5/14-5/21)
Stable	3 days (5/21-5/24)
Decrease	11 days (5/24-6/4)
Stable	3 days (6/4-6/7)
Decrease	5 days (6/7-6/12)



Hospitalizations are reported to CDPH by hospitals into I-NEDSS and ESSENCE and self-reported by patients via an online survey. Daily counts for most recent dates displayed are likely incomplete. Cases who are not indicated to have been hospitalized across any of the three data sources are assumed to not have been hospitalized. Six records with hospital admit dates from January and February 2020 are excluded from this chart.

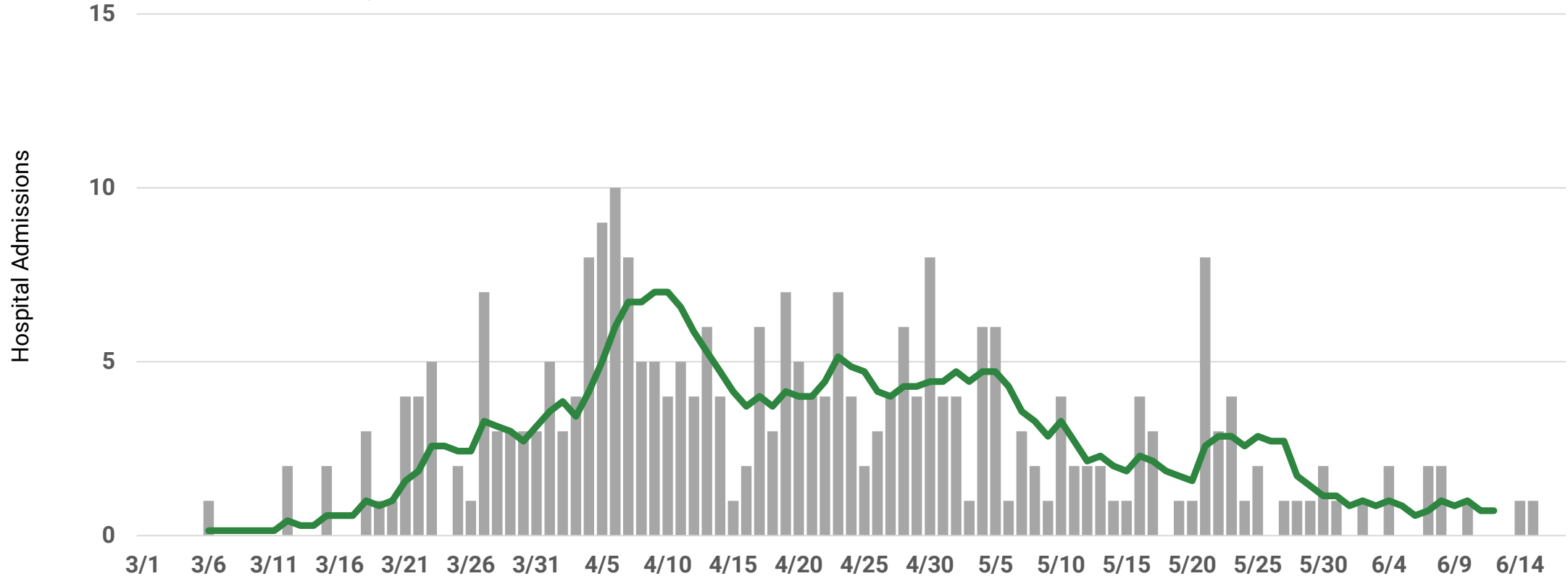
GO: CAUTIOUS PROGRESS

Asian non-Latinx hospital admissions at low incidence since June 3rd



COVID-19 hospital admissions among Asian, non-Latinx residents, daily counts and rolling 7-day average, first known hospital admit date

Trend	Below 2 avg. daily admissions for 21 days
-------	---



Hospitalizations are reported to CDPH by hospitals into I-NEDSS and ESSENCE and self-reported by patients via an online survey. Daily counts for most recent dates displayed are likely incomplete. Cases who are not indicated to have been hospitalized across any of the three data sources are assumed to not have been hospitalized. Six records with hospital admit dates from January and February 2020 are excluded from this chart.

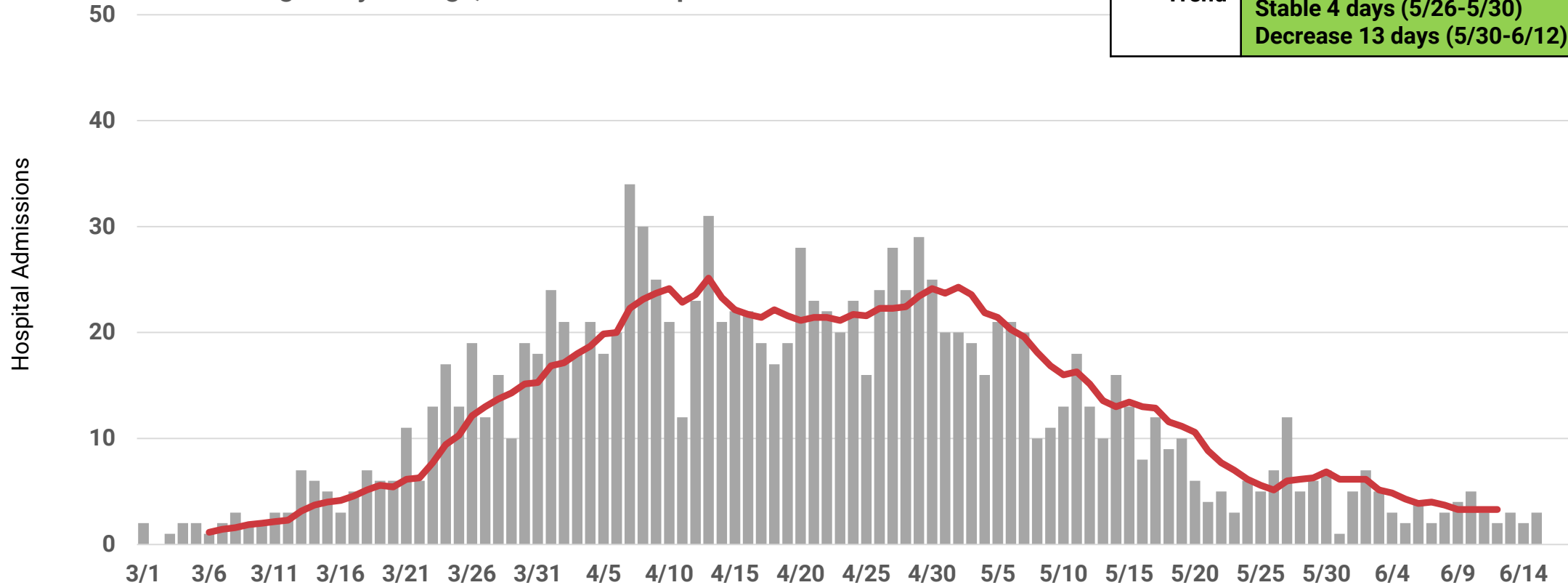
GO: CAUTIOUS PROGRESS

White, non-Latinx hospital admissions decreasing since June 3rd



COVID-19 hospital admissions among white, non-Latinx residents, daily counts and rolling 7-day average, first known hospital admit date

Trend	Stable 4 days (5/14-5/18)
	Decrease 8 days (5/18-5/26)
	Stable 4 days (5/26-5/30)
	Decrease 13 days (5/30-6/12)



Hospitalizations are reported to CDPH by hospitals into I-NEDSS and ESSENCE and self-reported by patients via an online survey. Daily counts for most recent dates displayed are likely incomplete. Cases who are not indicated to have been hospitalized across any of the three data sources are assumed to not have been hospitalized. Six records with hospital admit dates from January and February 2020 are excluded from this chart.

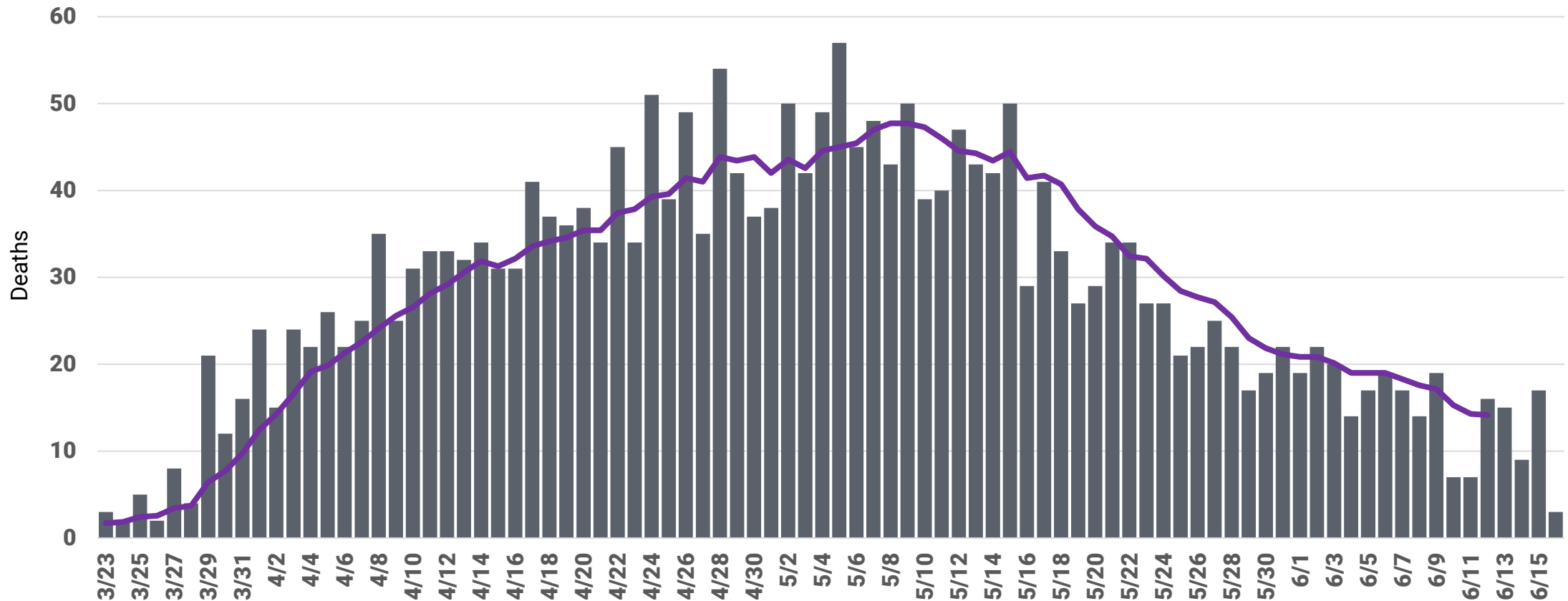
GO: CAUTIOUS PROGRESS

COVID-19 deaths decreasing for since June 3rd



COVID-19 deaths, daily counts and rolling 7-day average, deceased date

Trend
Stable 3 days (5/14-5/17)
Decrease 26 days (5/17-6/12)



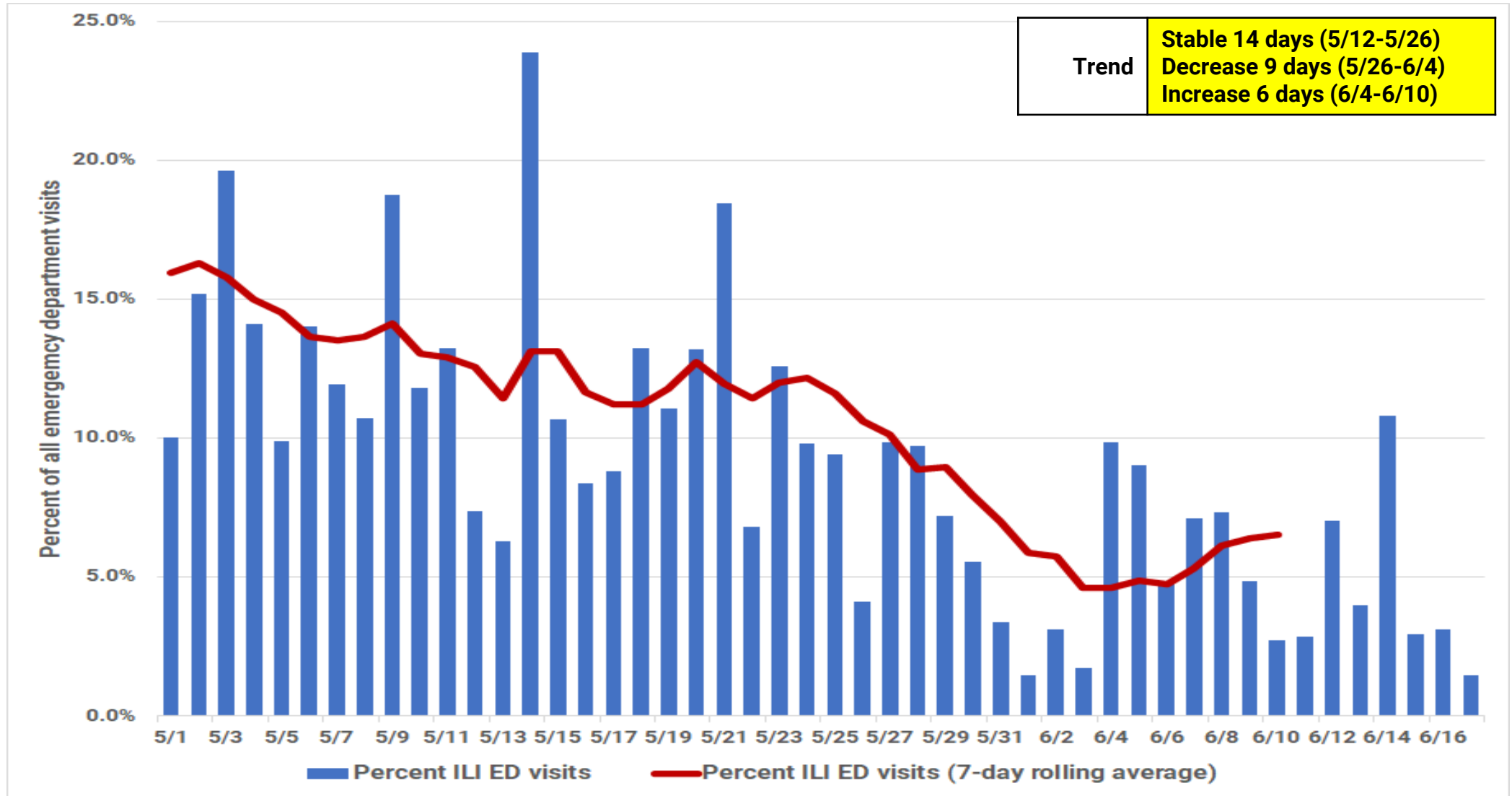
Daily COVID-19 deaths reported for Chicago residents with known death date. Data source: INEDSS. Daily counts for most recent dates displayed are likely incomplete..



Emergency Department Visits

CAUTION: PAUSE AND MONITOR

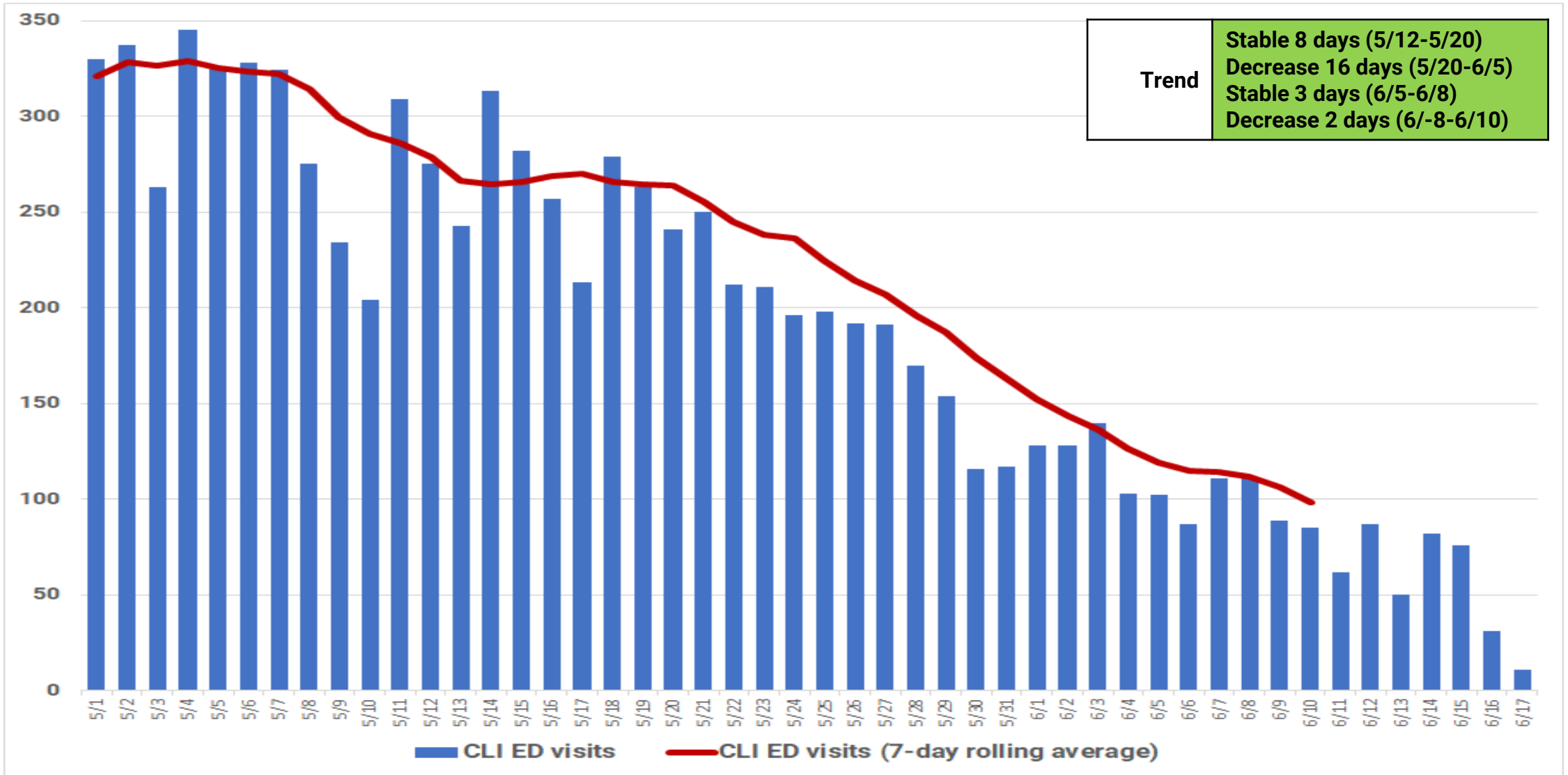
Proportion of ED visits for influenza-like illnesses increasing since June 3rd



ILI: Influenza-like illness. Percentage of all emergency department visits reported with influenza-like illness symptoms among Chicago residents.
Data Source: Illinois Hospital Emergency Departments reporting to CDPH through the National Syndromic Surveillance Project.

GO: CAUTIOUS PROGRESS

ED visits for COVID-like illness stable and decreasing since June 3rd



Percentage of all emergency department visits reported with COVID-like symptoms among Chicago residents. Trend analysis only assess the last 27 days.
 Data Source: Illinois Hospital Emergency Departments reporting to CDPH through the National Syndromic Surveillance Project.



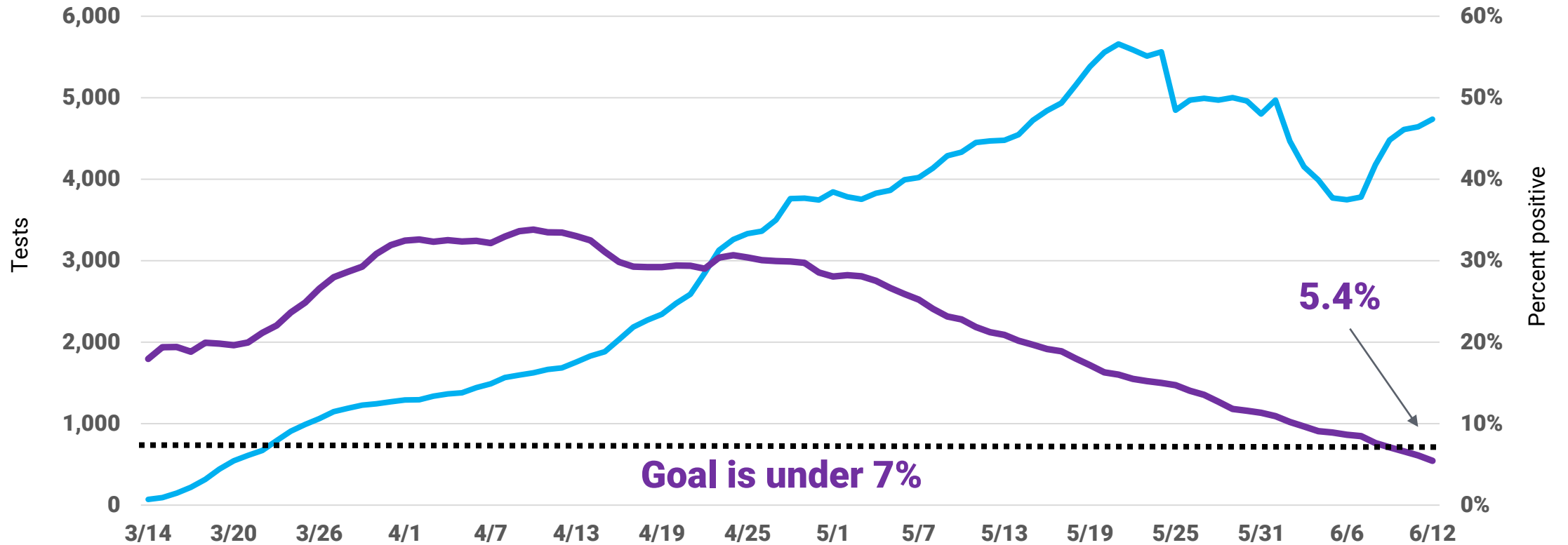
Percent Positivity

GO: ADVANCED PROGRESS

Percent positivity less than 7% citywide; testing increasing



COVID-19 tests, 7-day rolling average for percent positive (one test per individual ever) and for counts (one test per individual per day)



For percent positivity: Every individual tested is counted once. The first positive test is the date used for the test result. If the individual has only negative tests, the date of the first negative test is used. (INEDSS) For 7-day rolling average of counts: All tests performed on Chicago residents as reported by electronic lab reporting (IDPH).

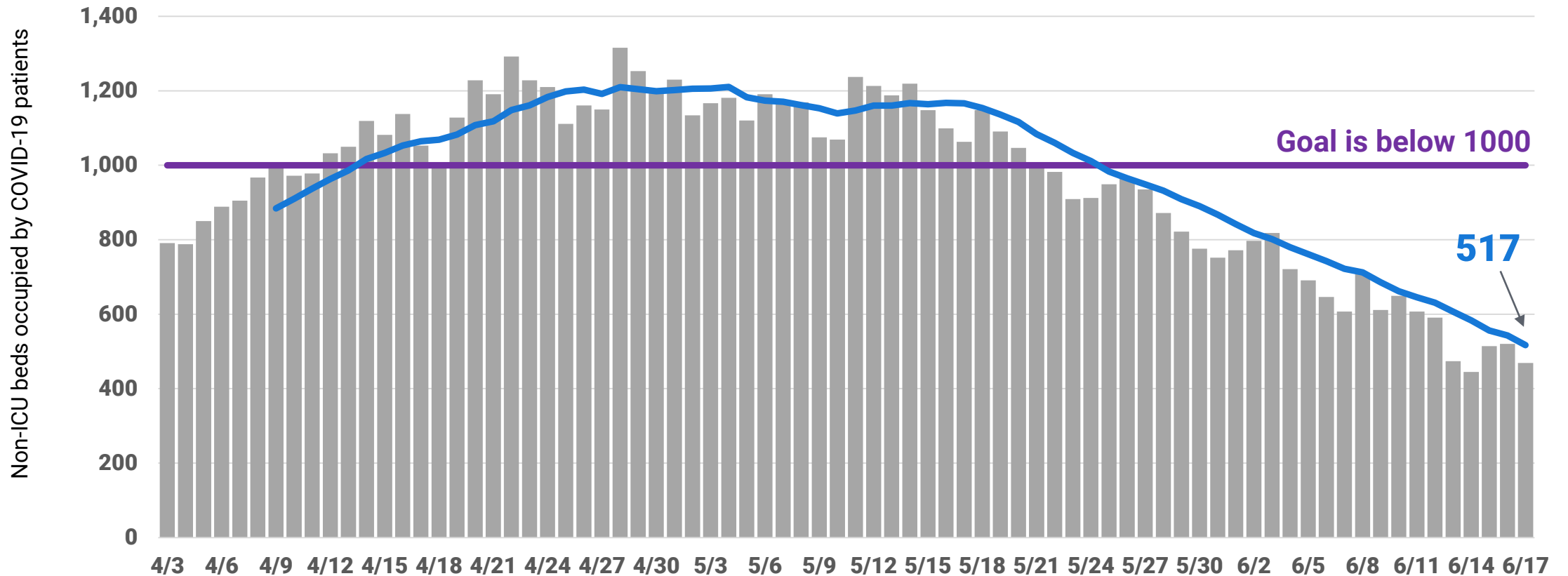


Hospital System Capacity

GO: CAUTIOUS PROGRESS

Non-ICU capacity adequate: <1,000 non-ICU beds occupied by patients with COVID-19

COVID-19 acute/non-ICU beds occupied, daily counts, 7 day average and reopening threshold, daily occupancy census



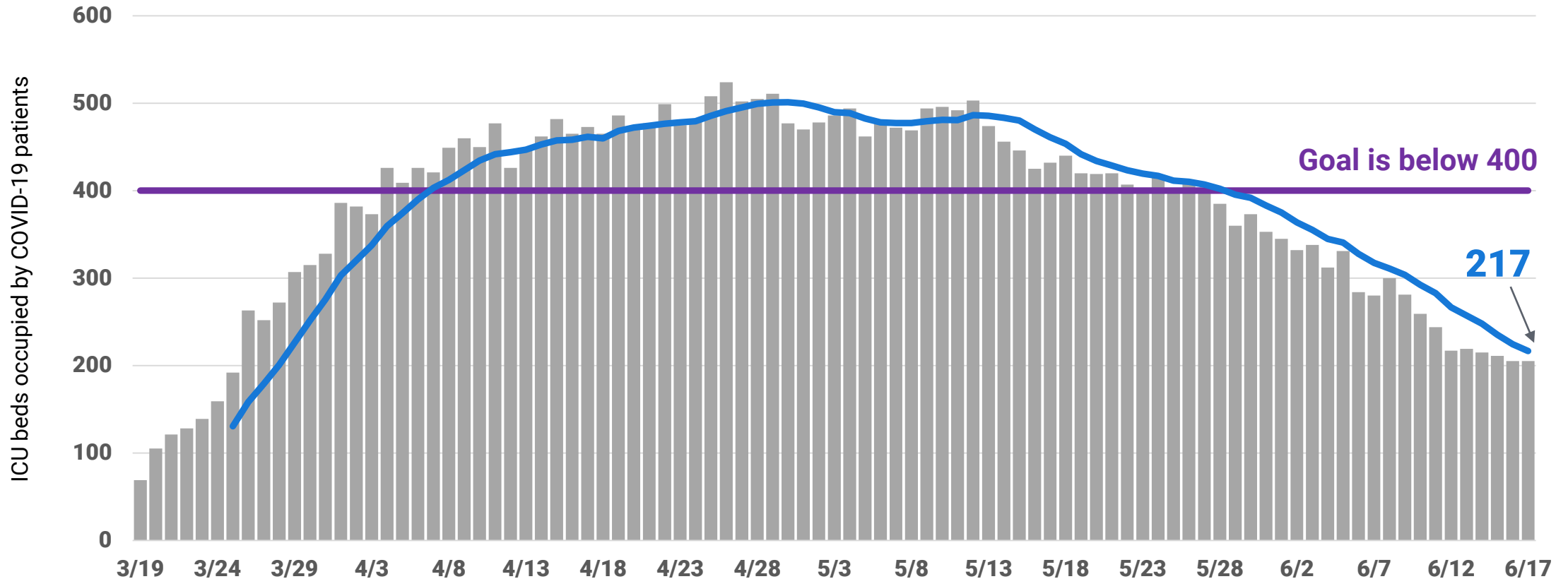
Includes all Chicago hospitals. Hospitals report daily to CDPH via EMResource, beginning April 3 (acute non-ICU occupancy). Acute non-ICU bed counts include burn, emergency department, med/surg, other, pediatrics and psychiatry beds in Chicago hospitals. Includes Chicago and non-Chicago residents. Includes confirmed and suspected COVID-19 cases.

GO: CAUTIOUS PROGRESS

ICU capacity adequate: <400 ICU beds occupied by patients with COVID-19



COVID-19 ICU beds occupied, daily counts, 7 day average and progress threshold, daily occupancy census



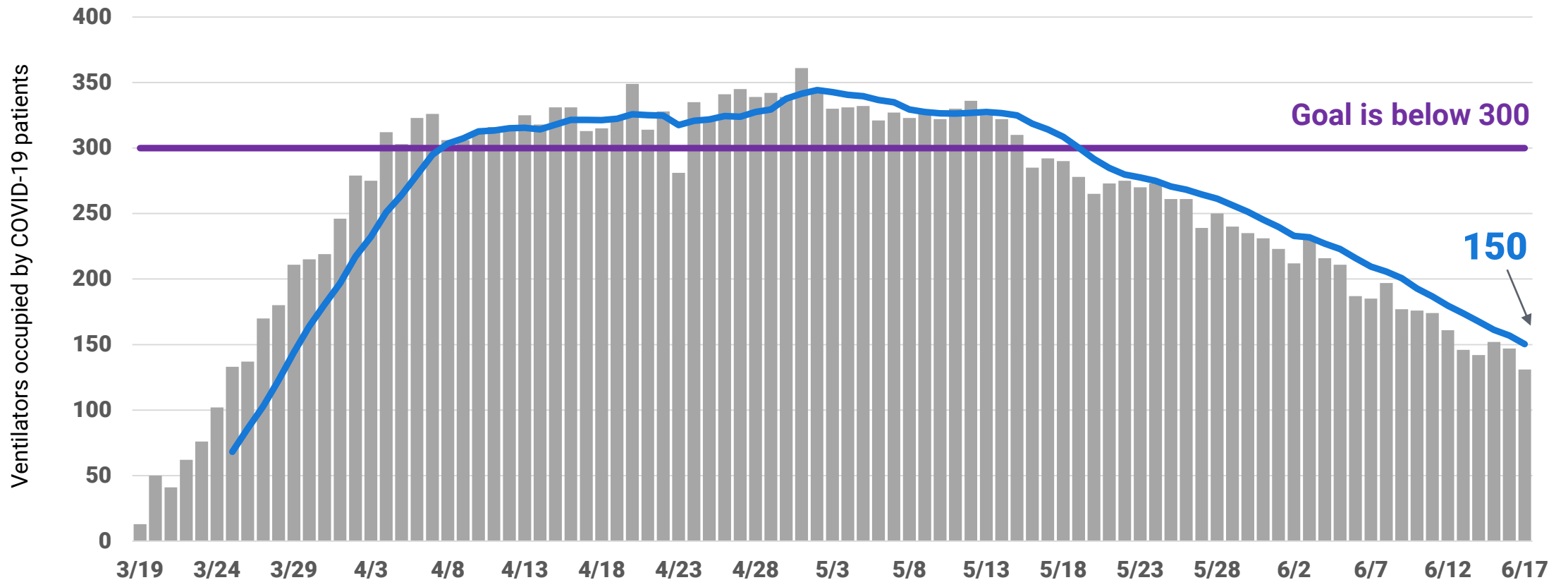
Includes all Chicago hospitals. Hospitals report daily to CDPH via EMResource, beginning March 19. ICU bed count includes all adult and pediatric ICU beds in Chicago hospitals. Includes Chicago and non-Chicago residents. Includes confirmed and suspected COVID-19 cases. Beginning 4/24/2020, the definition of ICU status changed as requested by HHS.

GO: CAUTIOUS PROGRESS

Ventilator capacity adequate: <300 patients with COVID-19 on ventilators



COVID-19 ventilators in use, daily counts, 7 day average and reopening threshold, daily utilization census



Includes all Chicago hospitals. Hospitals report daily to CDPH via EMResource, beginning March 19. Includes Chicago and non-Chicago residents. Includes confirmed and suspected COVID-19 cases. Beginning 4/24/2020, ventilator counts include all full-functioning mechanical ventilators, BiPAP, anesthesia machines and portable/transport ventilators.



Diagnostic Testing Capacity

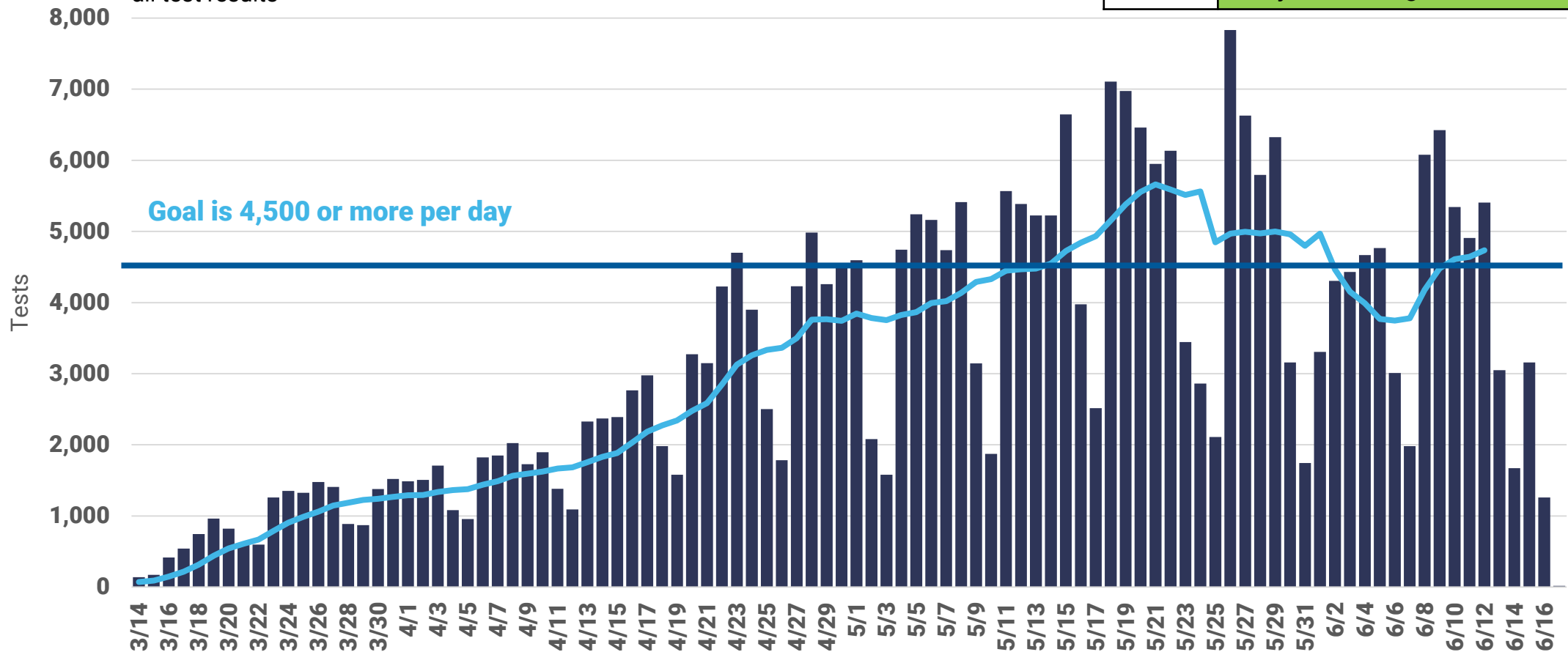
GO:CAUTIOUS PROGRESS

>4,500 tests being conducted per day



COVID-19 tests, daily count and 7-day moving average, all test results

Trend	4,736 tests per day (6/12) 3 days above target
-------	---



All COVID-19 tests performed on Chicago residents per day as reported by electronic lab reporting from IDPH. 4,500 tests per day represents the capacity to test 5% of Chicago residents per month. Daily counts for most recent dates displayed are likely incomplete.