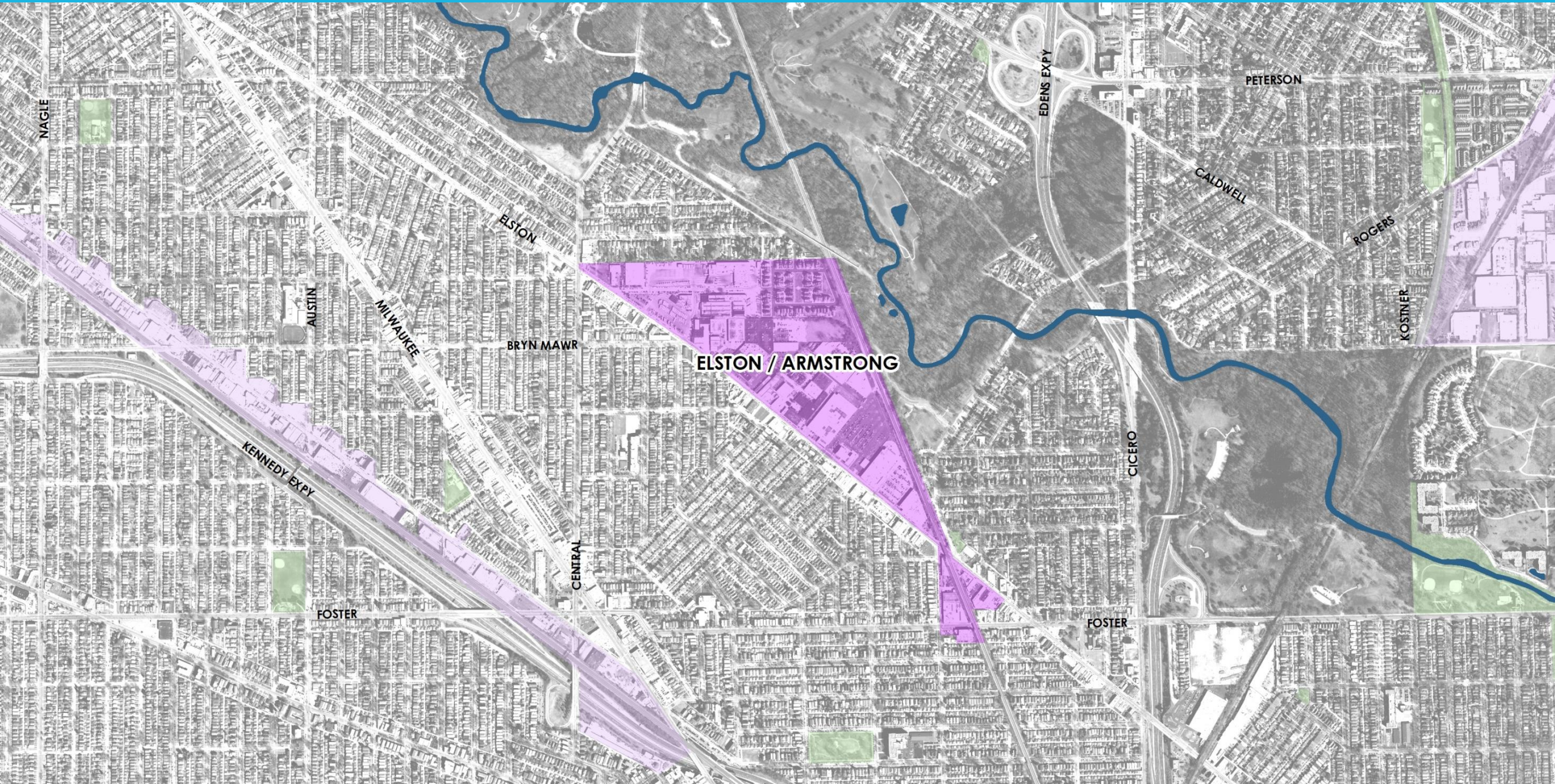
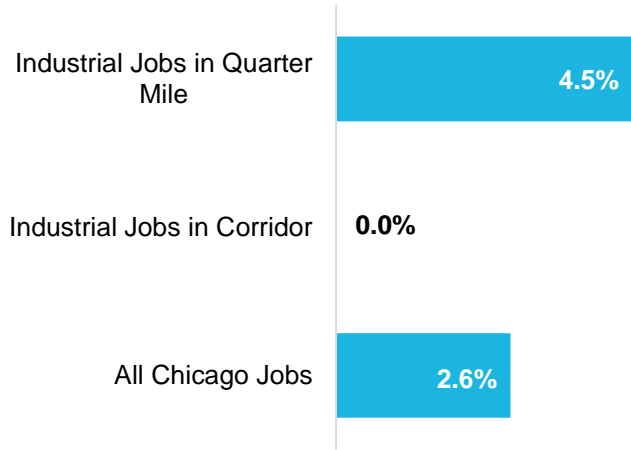


# ELSTON / ARMSTRONG INDUSTRIAL CORRIDOR

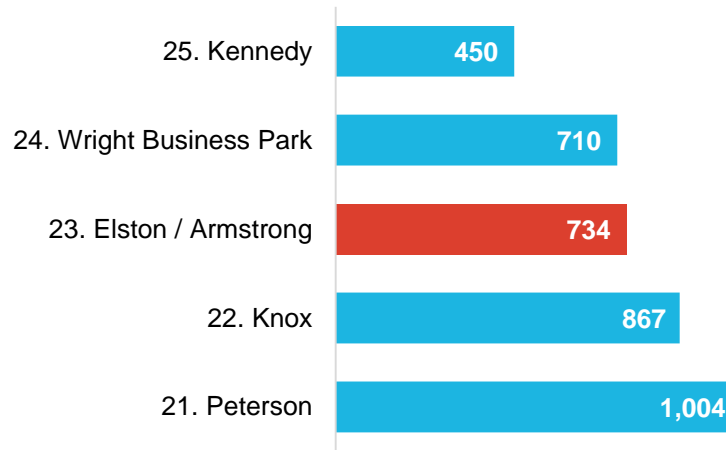


# DATA SNAPSHOT: ELSTON / ARMSTRONG INDUSTRIAL CORRIDOR

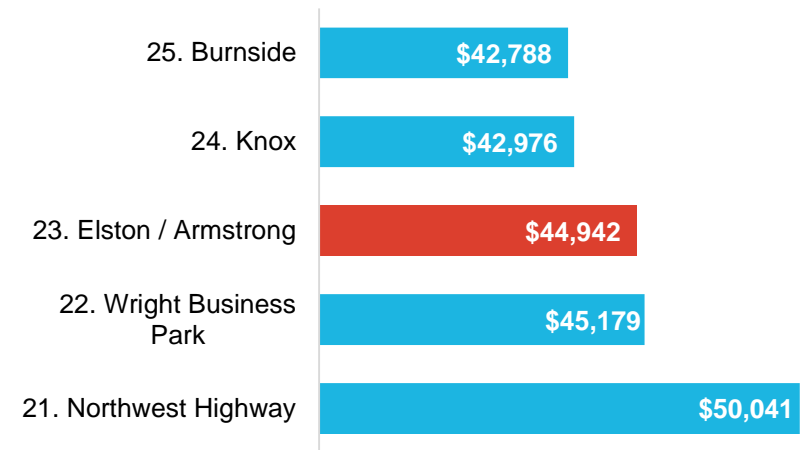
**Employment Growth  
(2010-2017 CAGR)**



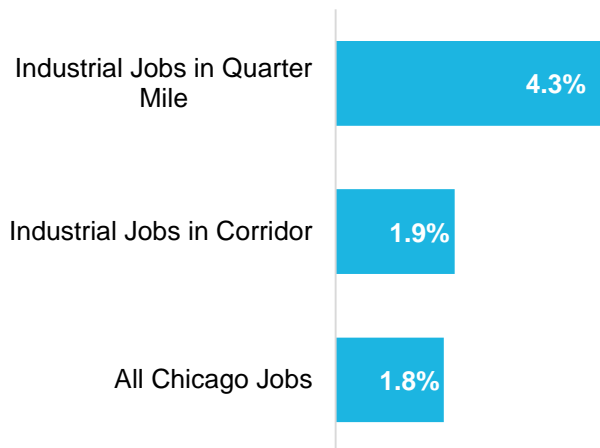
**Industrial Jobs 2017  
(Job Count & Rank of 26)**



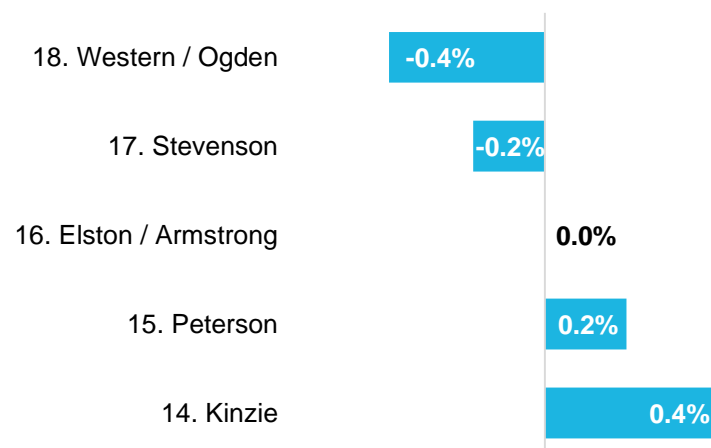
**Industrial Wage 2017  
(Average Wage & Rank of 26)**



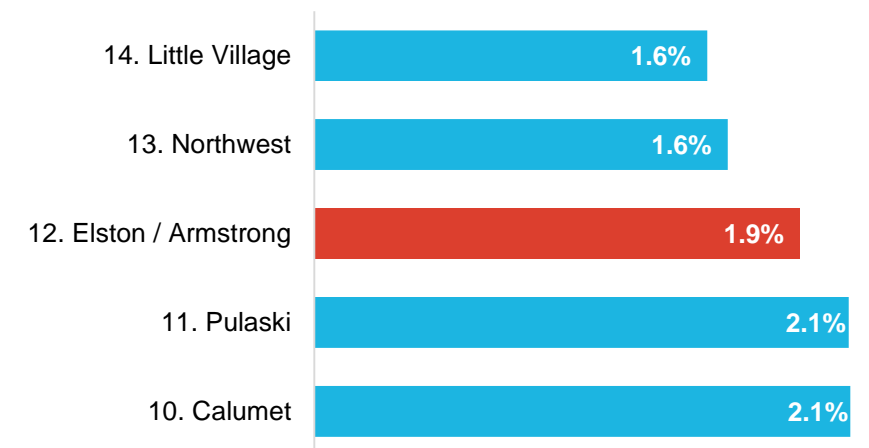
**Wage Growth  
(2010-2017 CAGR)**



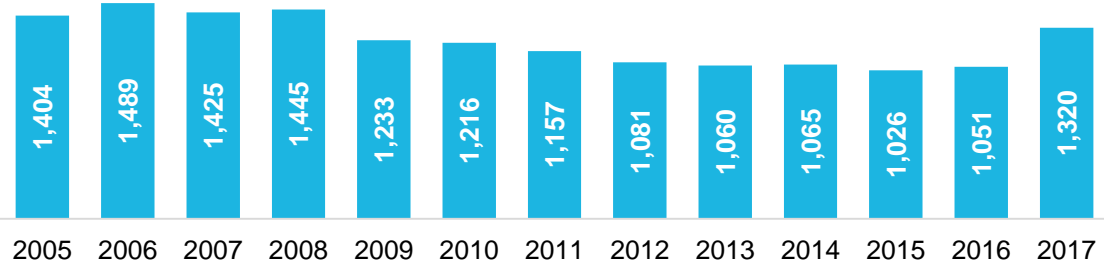
**Industrial Job CAGR 2010-2017  
(CAGR & Rank of 26)**



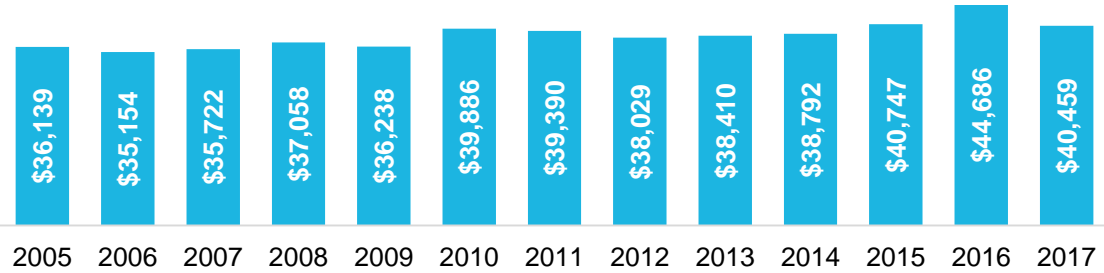
**Industrial Wage CAGR 2010-2017  
(CAGR & Rank of 26)**



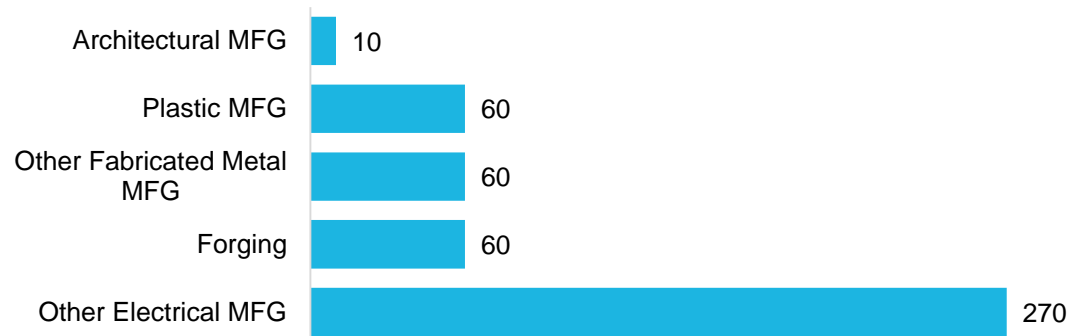
**Corridor Employment Totals by Year**



**Corridor Average Wage by Year**



**Employment by Manufacturing Industry: Top 5**



**Employment Wage by Manufacturing Industry: Top 5**



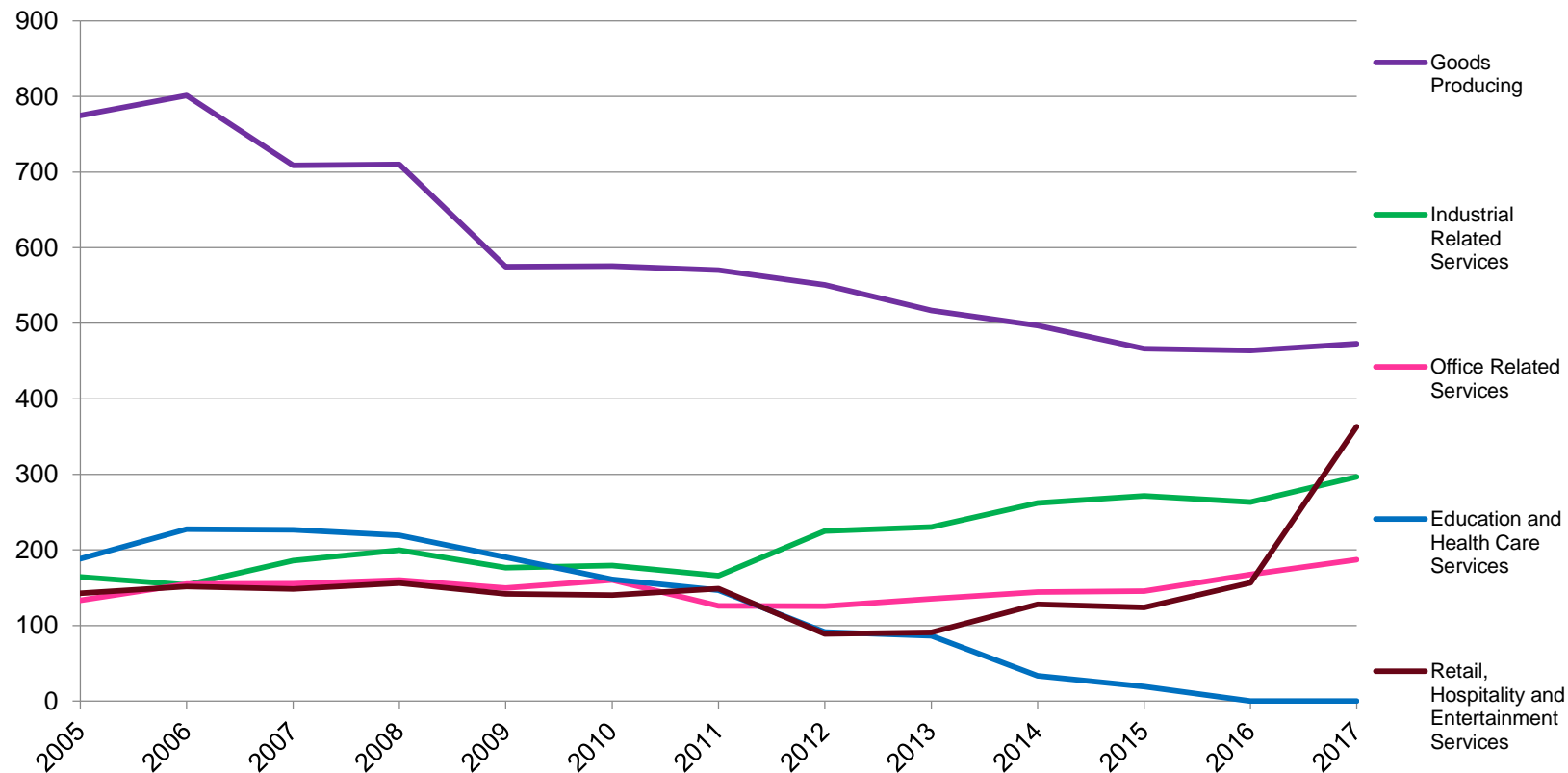
**Most Common Manufacturing Occupations in Corridor**

Occupation	Jobs	Median Wage	Education
Assemblers and Fabricators, All Other, Including Team Assemblers	50	\$29,130	High school diploma or equivalent
Laborers and Freight, Stock, and Material Movers, Hand	40	\$29,090	No formal educational credential
Packers and Packagers, Hand	30	\$27,600	No formal educational credential
Electrical, Electronic, and Electromechanical Assemblers, Except Coil Winders, Tapers, and Finishers	30	\$34,770	High school diploma or equivalent
Machinists	20	\$38,400	High school diploma or equivalent
Production Workers, All Other	20	\$31,660	High school diploma or equivalent
Light Truck or Delivery Services Drivers	20	\$38,610	High school diploma or equivalent
Inspectors, Testers, Sorters, Samplers, and Weighers	20	\$38,130	High school diploma or equivalent
Tire Repairers and Changers	20	\$28,600	High school diploma or equivalent
First-Line Supervisors of Production and Operating Workers	20	\$60,320	High school diploma or equivalent

### Employment by Sector: 2005 – 2017

Sector	2005	2006	2007	2008	2009	2010	2011	2012	2013	2014	2015	2016	2017	Change	%Change
Goods Producing	775	801	709	710	575	576	570	551	517	497	466	464	473	-302	-39.0%
Industrial Related Services	164	154	186	200	177	179	166	225	230	262	271	263	297	132	80.5%
Office Related Services	133	155	155	160	150	160	126	125	135	144	145	167	187	54	40.3%
Education and Health Care Services	188	227	227	219	190	161	147	91	86	33	19	0	0	-188	-100.0%
Retail, Hospitality and Entertainment Services	143	152	148	156	142	140	149	89	91	128	124	157	363	221	154.7%
<b>Total Employment</b>	<b>1,404</b>	<b>1,489</b>	<b>1,425</b>	<b>1,445</b>	<b>1,233</b>	<b>1,216</b>	<b>1,157</b>	<b>1,081</b>	<b>1,060</b>	<b>1,065</b>	<b>1,026</b>	<b>1,051</b>	<b>1,320</b>	<b>-84</b>	<b>-6.0%</b>

### Employment by Sector



### Total Employment

