

Source: American Community Survey, 2010-2014, per Esri; data represents Market Area for each community

SAMPLE HOUSING TYPES IN JEFFERSON PARK



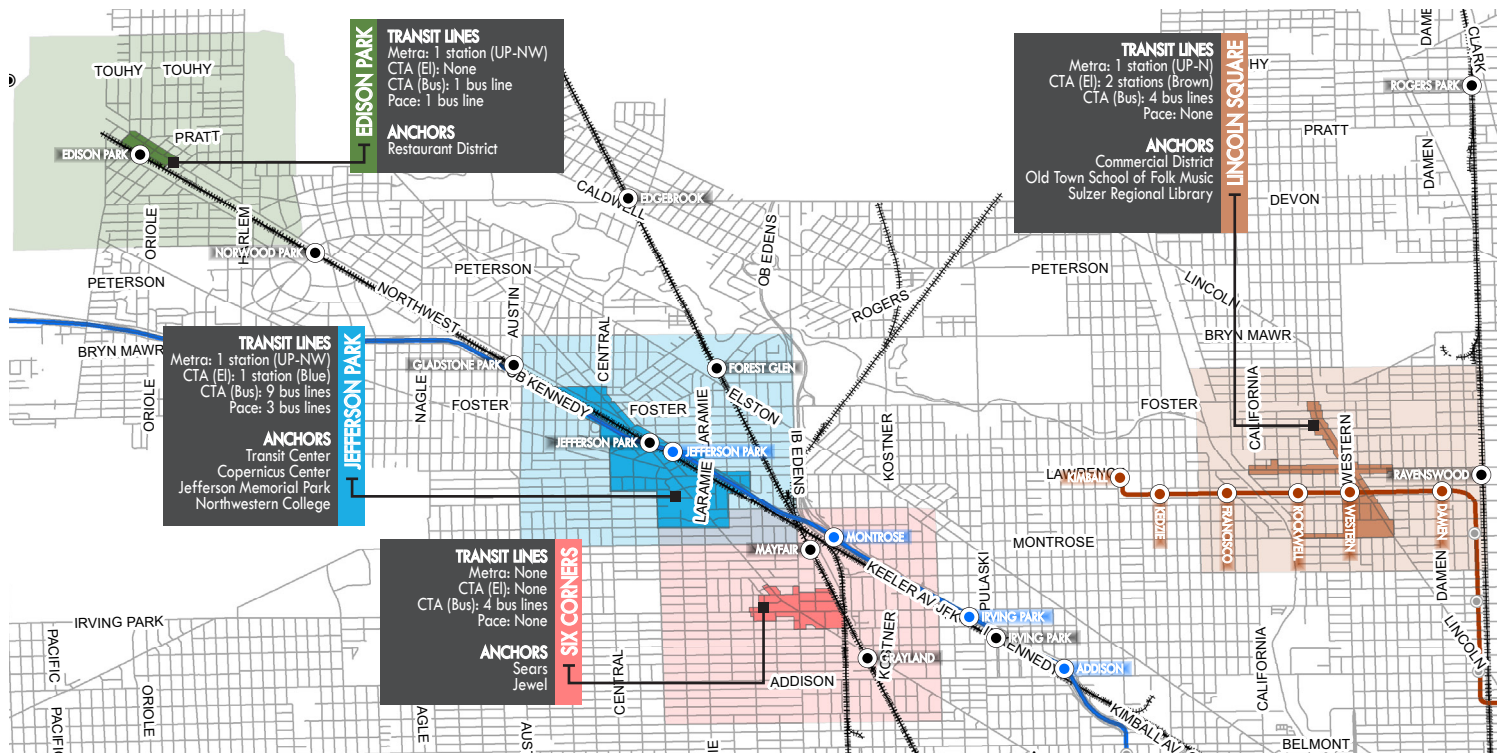
	JEFFERSON PARK	PORTAGE PARK	EDISON PARK	FOREST GLEN
Single Family Detached				
:: Median Home Price	\$297,000	\$280,000	\$360,400	\$445,000
:: Change, 2015-2016	8%	10%	3%	11%
Townhome, Condo				
:: Median Home Price	\$150,000	\$140,000	\$145,000	\$255,000
:: Change, 2015-2016	9%	6%	7%	42%

Source: Chicago Magazine based on Midwest Real Estate Data; American Community Survey 2010-2014; data represents Community Areas as defined by Midwest Real Estate

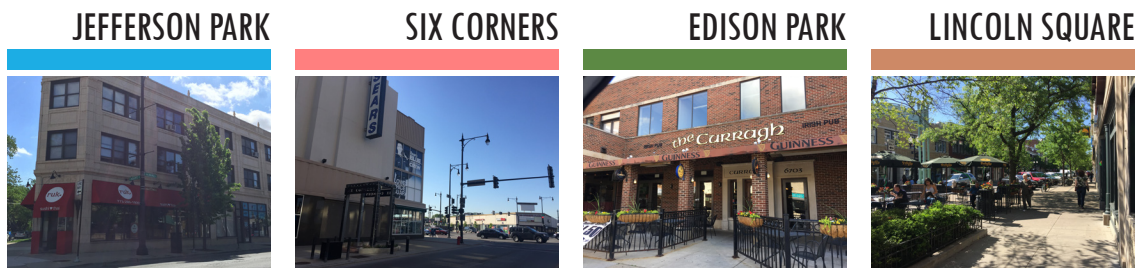
HOUSING MARKET

JEFFERSON PARK STATION AREA MASTER PLAN
 COMMUNITY MEETING #1 | JUNE 19, 2017 | www.accessjeffpark.org





NOTE: The dark shaded areas represent business districts, while the light shaded areas represent the larger market area associated with each business district. The data in the table below reflects information for the four business districts.



	JEFFERSON PARK	SIX CORNERS	EDISON PARK	LINCOLN SQUARE
Total Establishments	72	52	24	151
:: Retail	47	35	9	79
:: Food & Drink	25	17	15	72
Businesses per 1,000 people	2.32	1.43	1.26	3.39
2016 Population	30,983	36,272	19,099	44,503
2016 Median Household Disposable Income	\$49,155	\$44,087	\$57,546	\$50,648
Total Retail Trade Demand	\$439M	\$466M	\$378M	\$893M
Total Retail Trade Supply	\$175M	\$569M	\$104M	\$259M
Total Retail Trade Gap ¹	\$264M	(\$103M)	\$274M	\$633M
Supply as % of Demand	40%	122%	28%	29%
Total Food & Drink Gap ¹	\$10M	\$12M	(\$4M)	\$27M

Source: Esri; data represents Business District area for each community

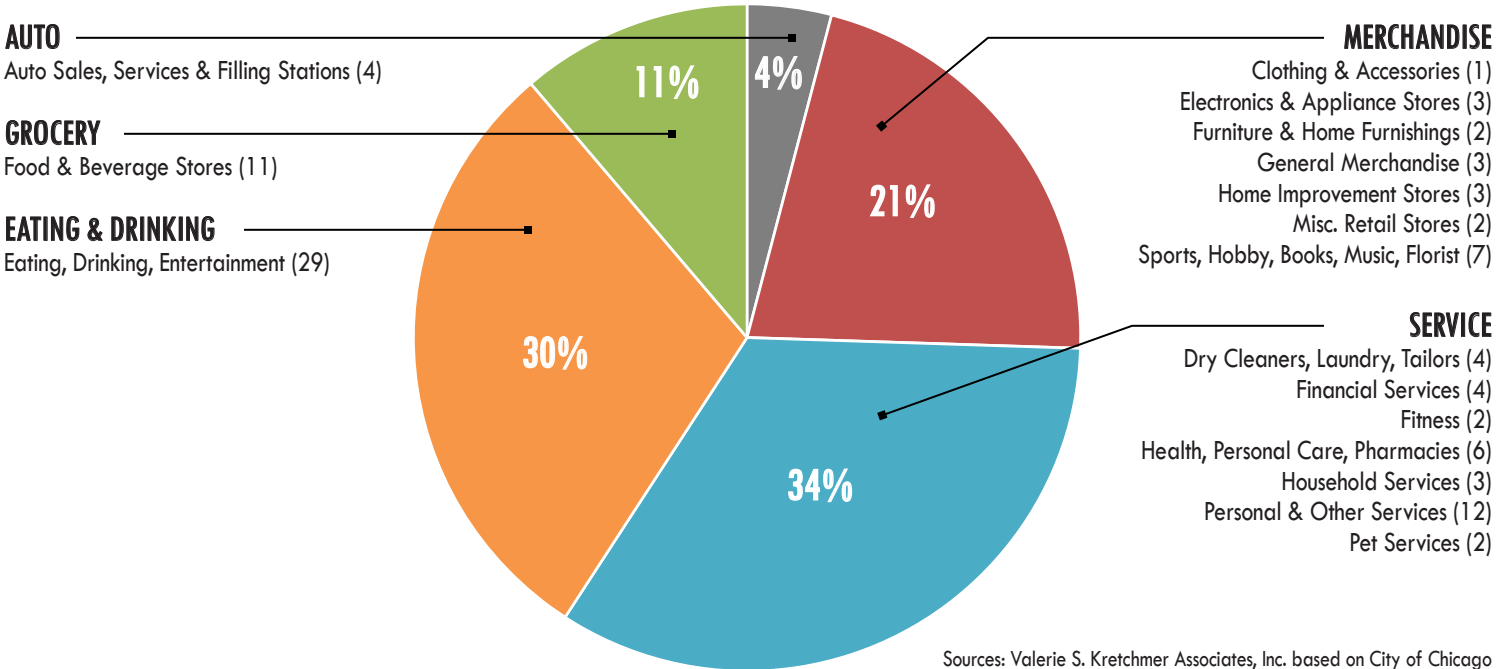
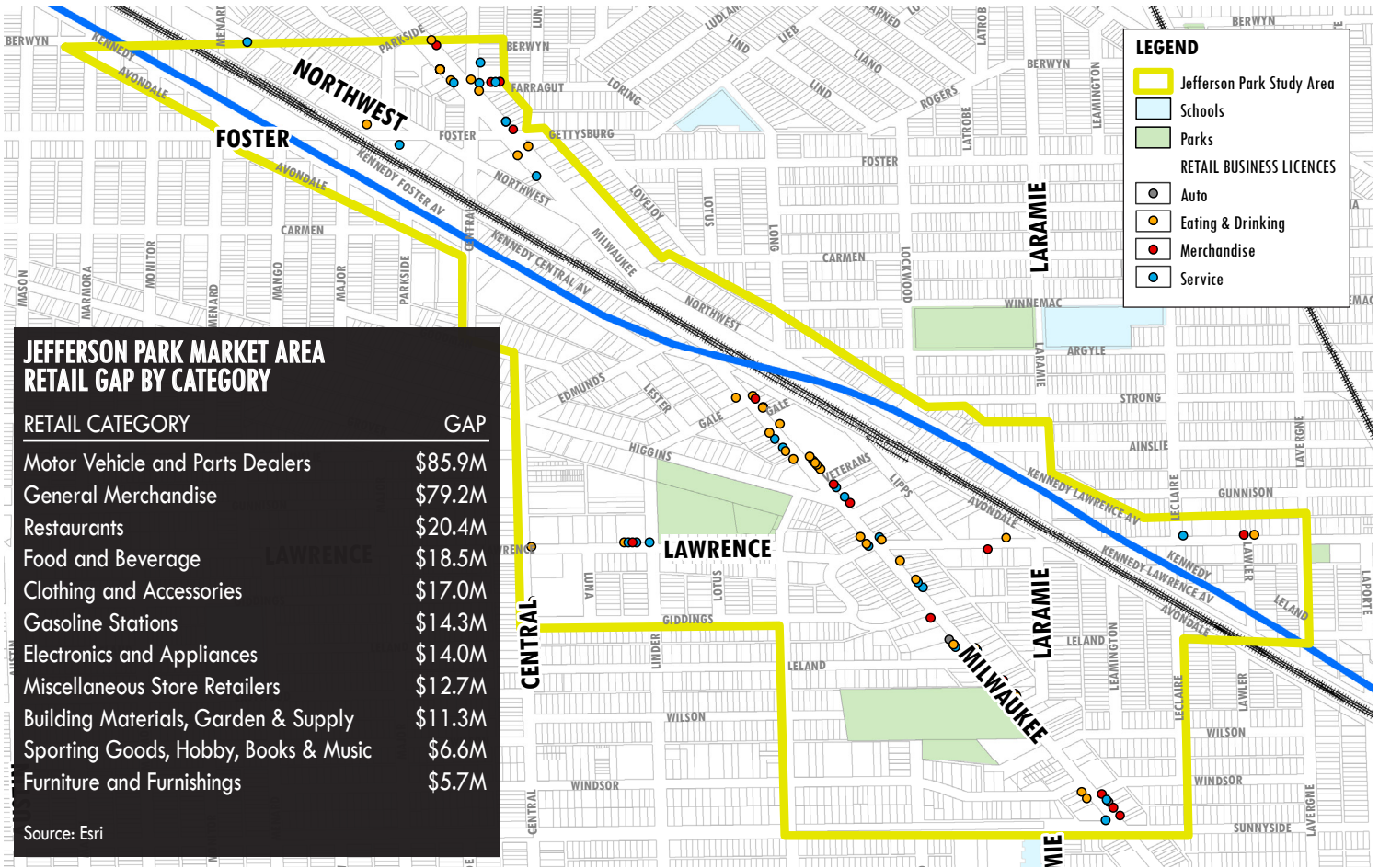
¹ A gap is shown as a positive number. A negative number (denoted by parentheses) indicates that the area is attracting sales from outside of the area and has a surplus.

BUSINESS DISTRICTS

JEFFERSON PARK STATION AREA MASTER PLAN

COMMUNITY MEETING #1 | JUNE 19, 2017 | www.accessjeffpark.org





Sources: Valerie S. Kretchmer Associates, Inc. based on City of Chicago business license data for the Jefferson Park Study Area

RETAIL MARKET

JEFFERSON PARK STATION AREA MASTER PLAN
COMMUNITY MEETING #1 | JUNE 19, 2017 | www.accessjeffpark.org

