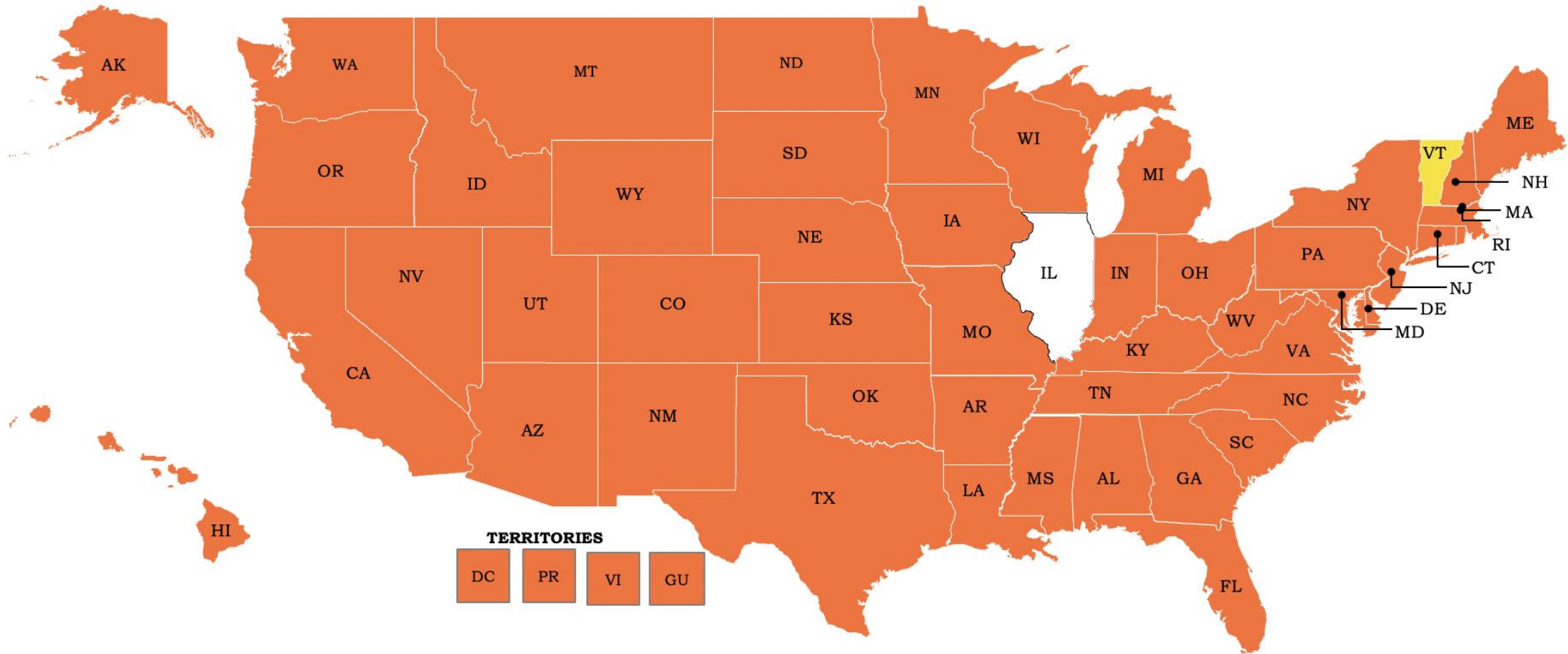


PROTECT
CHICAGO ★

PROTEGE A
CHICAGO ★

Chicago's COVID-19 Travel Advisory:

★ **all states** except Vermont



Legend:
Orange: ≥ 15 daily cases per 100k
Yellow: Less than 15 daily cases per 100k

Increased risk: Chicago's travel advisory for unvaccinated updated to align with CDC guidance

IF YOU ARE UNVACCINATED and traveling to a high-risk state:

Before you travel

- **Get tested** 1-3 days before your trip.

While you are traveling

- **By law, regardless of vaccination status, you are required to wear a mask** over your nose and mouth on public transportation nationwide.
- Wear a mask in indoor public settings; socially distance; wash hands frequently.

After you travel

- **Get tested** 3-5 days after travel **AND** stay home and **self-quarantine** for a full 7 days after travel.
 - Even if you test negative, stay home and self-quarantine for the full 7 days.
- If you **don't get tested**, stay home and **self-quarantine** for 10 days after travel.
- **Avoid being around people who are at increased risk** for severe illness for 14 days after travel, whether you get tested or not.
- **Self-monitor** for COVID-19 symptoms; isolate and get tested if you develop symptoms.

Chicago COVID-19 Community Transmission and Risk Matrix



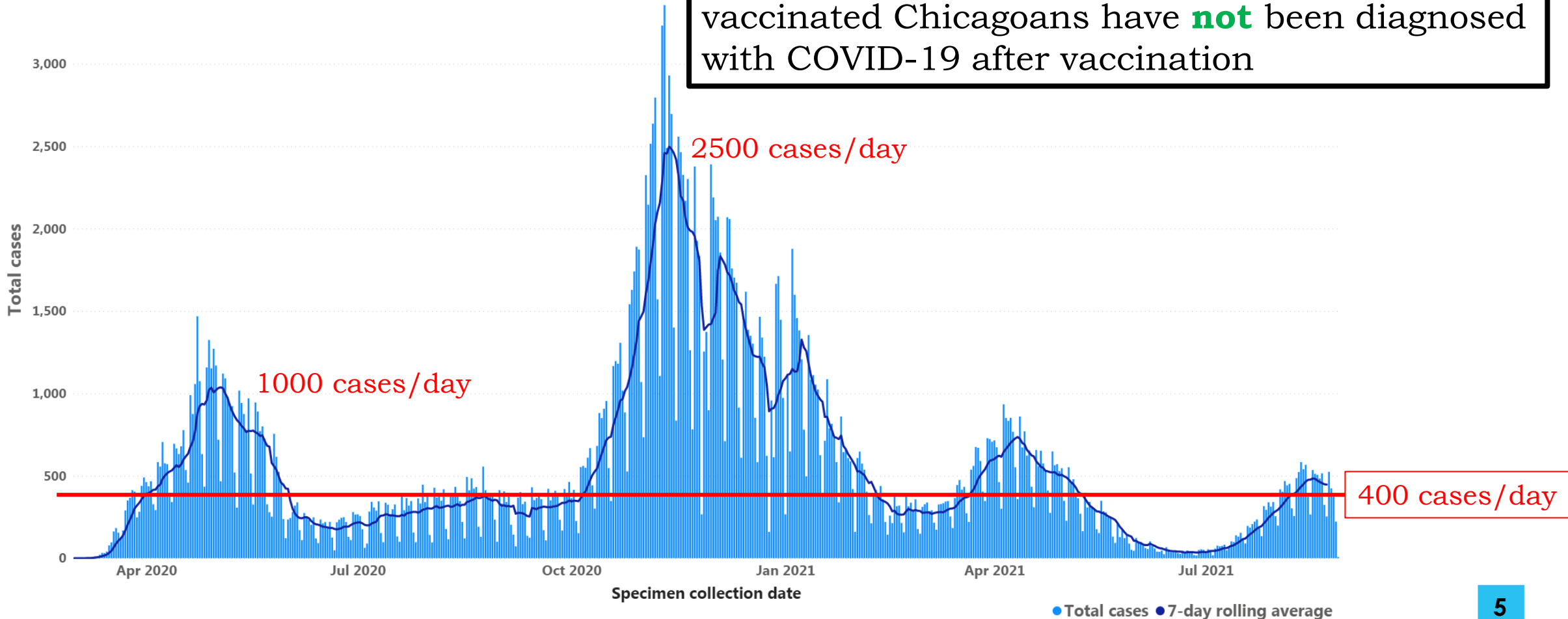
	VERY HIGH TRANSMISSION	HIGH TRANSMISSION	SUBSTANTIAL TRANSMISSION	LOWER TRANSMISSION	CONTROLLED TRANSMISSION
COVID-19 CASES DIAGNOSED PER DAY Chicago residents - 7-day rolling daily average	800+	400 – 799 Current: 473 Increasing	200 – 399	20 – 199	<20
COVID-19 TEST POSITIVITY Chicago residents - 7-day rolling daily average	10%+	6.6 – 9.9%	5.0 – 6.5%	2 – 4.9% Current: 4.4% Decreasing	<2%
HOSPITAL BEDS (NON-ICU) OCCUPIED BY COVID PATIENTS Chicago hospitals - 7-day rolling daily average	1250+	750-1249	250 – 749	100 – 249 Current: 248 Increasing	<100
ICU BEDS OCCUPIED BY COVID PATIENTS Chicago hospitals - 7-day rolling daily average	400+	300 – 399	100 – 299	20 – 99 Current: 99 Increasing	<20

Source: Chicago Department of Public Health, data current as of August 30, 2021. These metrics represent general community COVID transmission and should not be applied to individual settings that have mitigation practices in place.

Chicago COVID-19 **case** count remains over 400 diagnosed cases per day, but increase has stabilized over last week



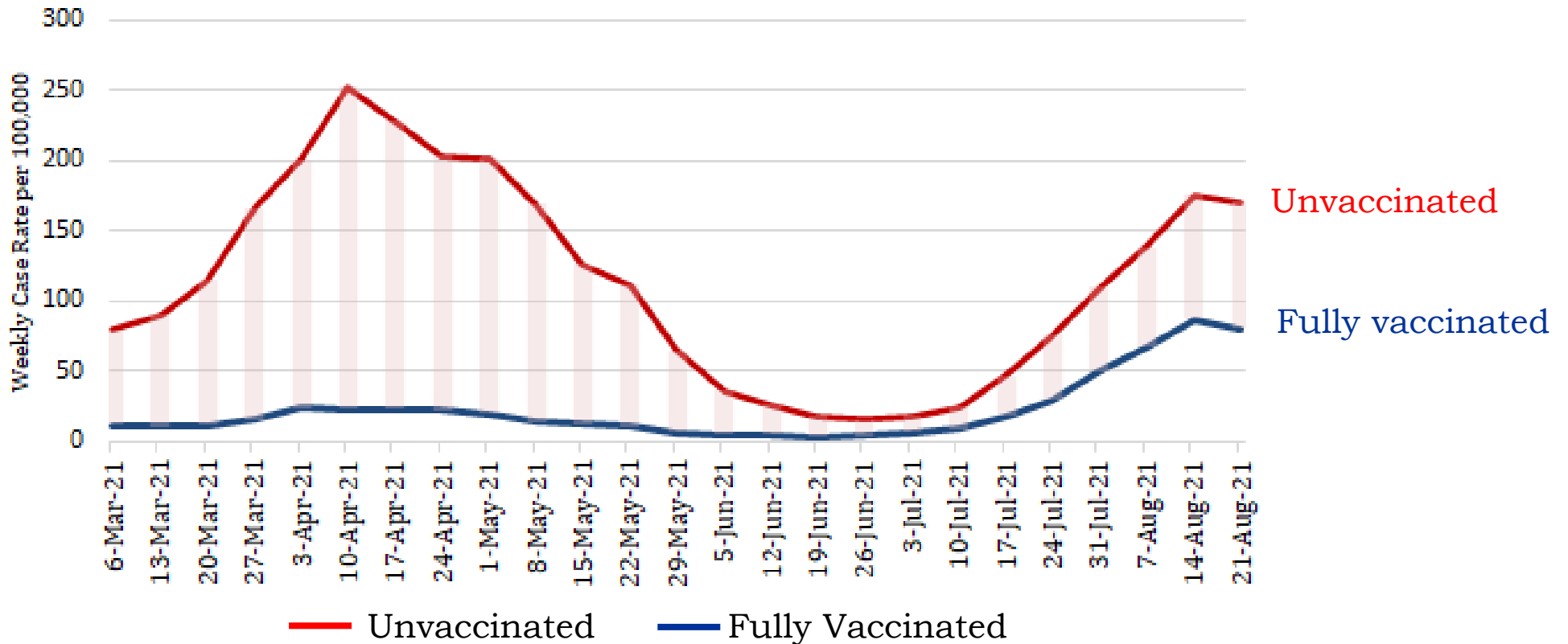
Breakthrough cases: Increasing, but 99.9% of vaccinated Chicagoans have **not been diagnosed with COVID-19 after vaccination**



COVID case rates remain higher among unvaccinated Chicagoans compared to fully vaccinated Chicagoans



Chicago Residents' Weekly COVID Case Rate per 100,000 by vaccination status

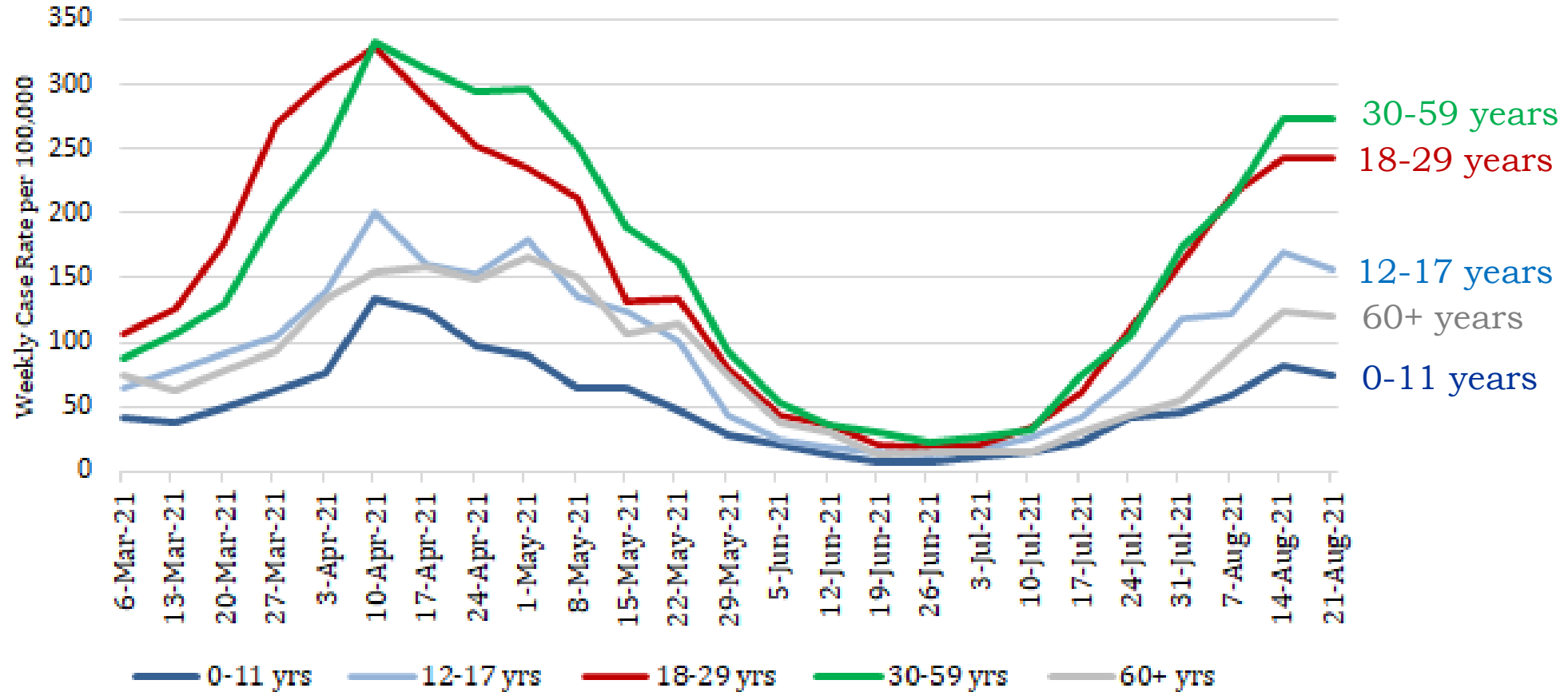


Notes: Includes cases among Chicago residents reported into the Illinois Electronic Disease Surveillance System (I-NEDSS) with date of specimen collection 1/1/2021-8/21/2021, pulled 8/25/2021. Vaccination status obtained from the Illinois Comprehensive Automated Immunization Registry (I-CARE) registry. Vaccinated defined as having had at least one dose prior to a positive test. Fully vaccinated defined as completion of vaccine series at least 14 days prior to a positive test. Rate for vaccinated calculated as total case deaths divided by cumulative vaccinated at the end of each week, multiplied by 100,000. Rate for unvaccinated calculated as total case deaths divided by total population minus cumulative vaccinated at the end of each week, multiplied by 100,000.

Highest COVID case rate still among **unvaccinated** Chicagoans age **18-59** years.



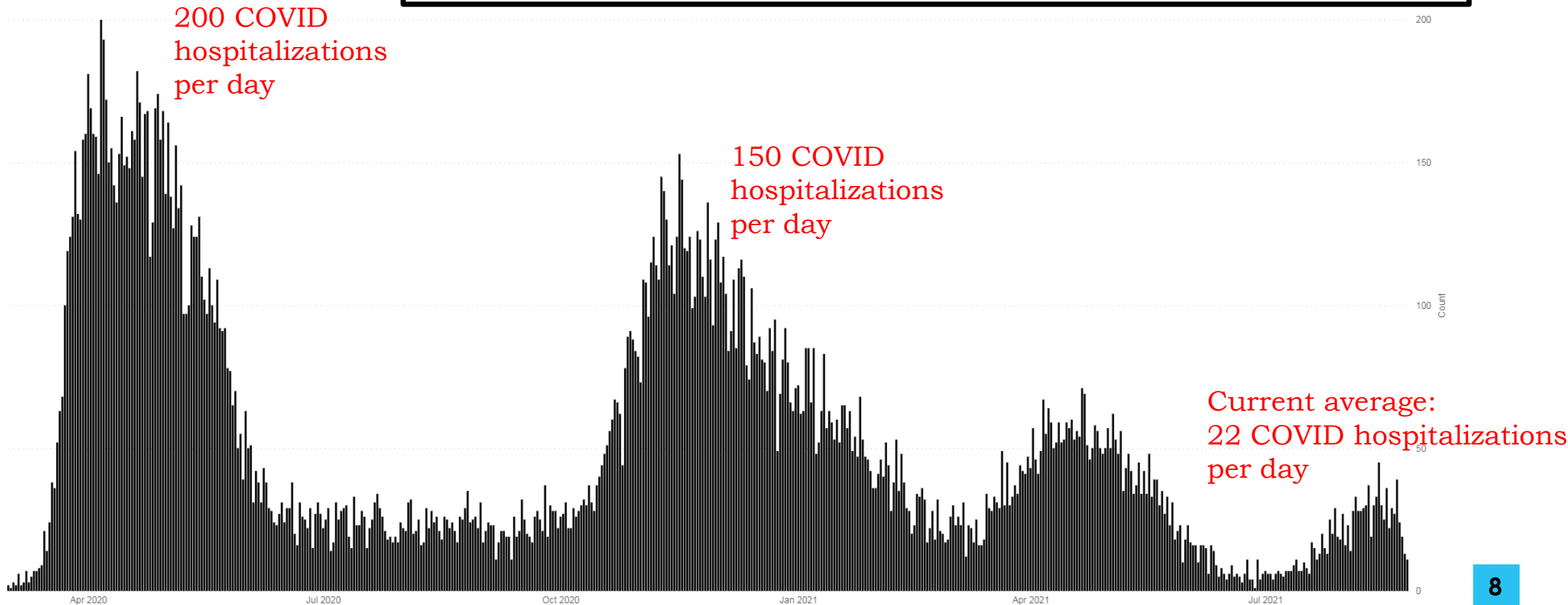
Unvaccinated Chicago residents COVID case rate by age



Notes: Includes cases among Chicago residents reported into the Illinois Electronic Disease Surveillance System (I-NEDSS) with date of specimen collection 1/1/2021-8/21/2021, pulled 8/25/2021. Vaccination status obtained from the Illinois Comprehensive Automated Immunization Registry (I-CARE) registry. Rate for unvaccinated calculated as total cases divided by total population minus cumulative vaccinated at the end of each week, multiplied by 100,000.

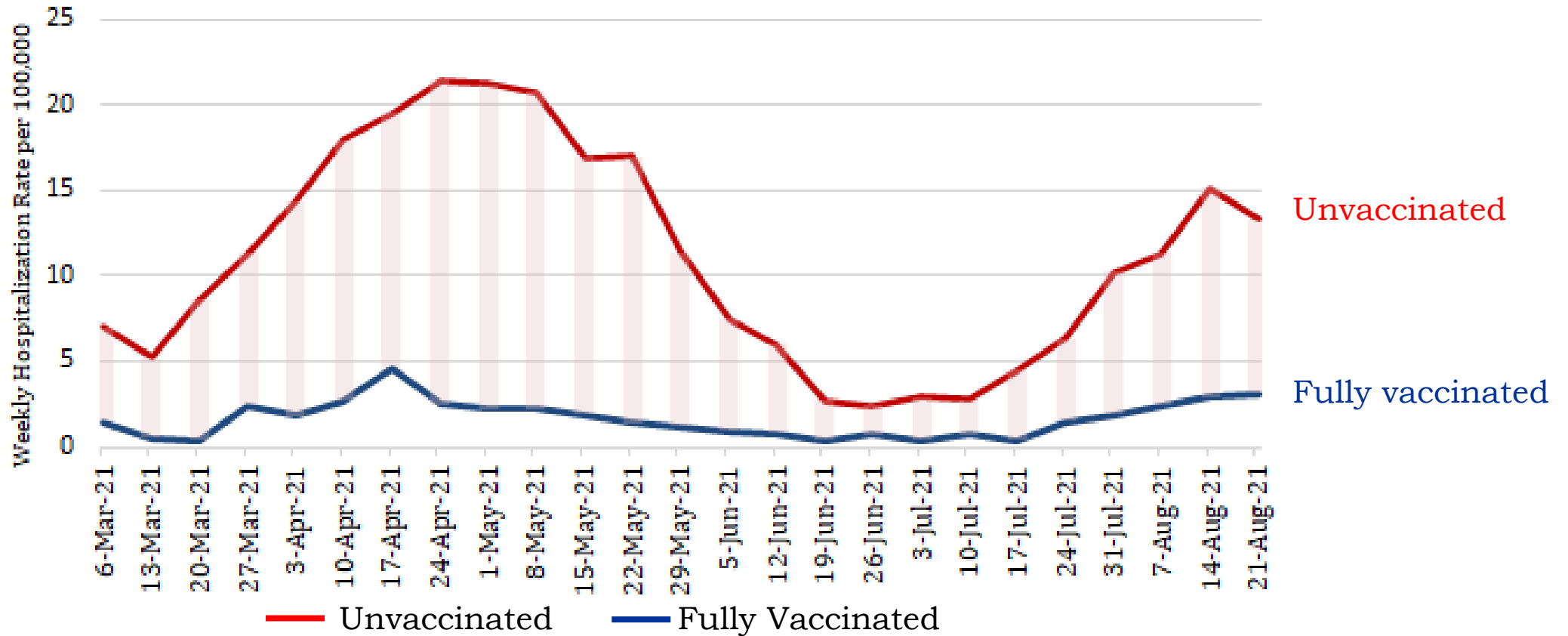
Daily COVID hospitalizations for Chicago residents remain well below earlier pandemic peaks

Breakthroughs: 99.99% of vaccinated Chicagoans have **not** been hospitalized with COVID-19 after vaccination



COVID hospitalization rates remain much higher among **unvaccinated** Chicagoans compared to **fully vaccinated** Chicagoans

Chicago Residents' COVID Hospitalization Rate per 100,000 by vaccination status

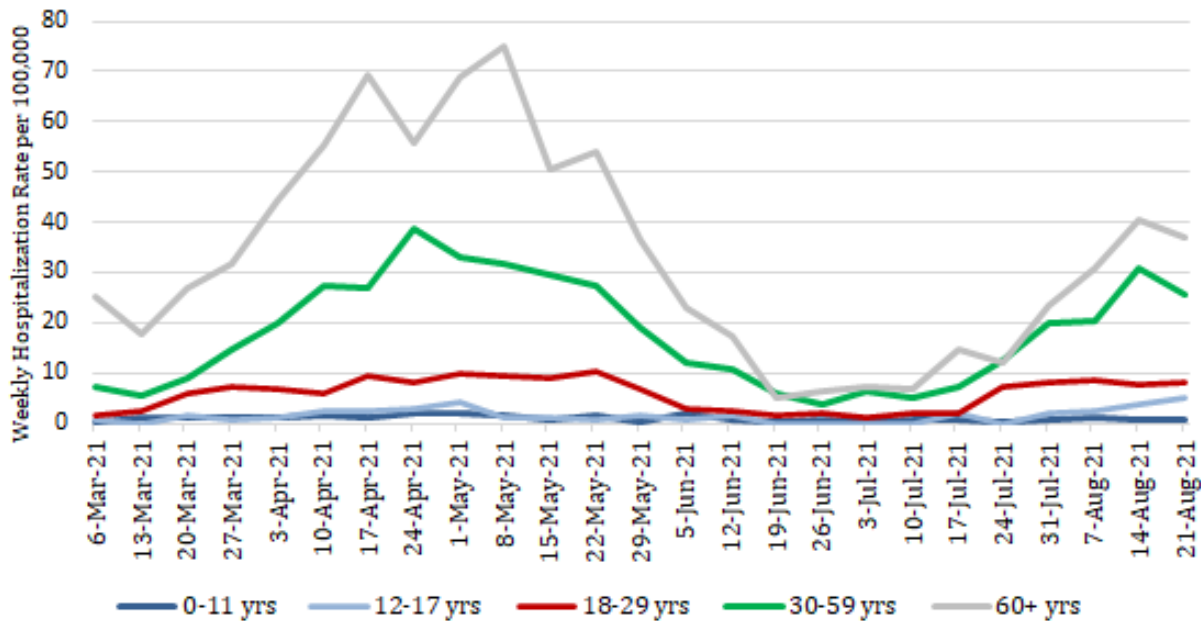


Notes: Includes cases among Chicago residents reported into the Illinois Electronic Disease Surveillance System (I-NEDSS) with date of specimen collection 1/1/2021-8/21/2021, pulled 8/25/2021. Vaccination status obtained from the Illinois Comprehensive Automated Immunization Registry (I-CARE) registry. Vaccinated defined as having had at least one dose prior to a positive test. Fully vaccinated defined as completion of vaccine series at least 14 days prior to a positive test. Rate for vaccinated calculated as total case deaths divided by cumulative vaccinated at the end of each week, multiplied by 100,000. Rate for unvaccinated calculated as total case deaths divided by total population minus cumulative vaccinated at the end of each week, multiplied by 100,000.

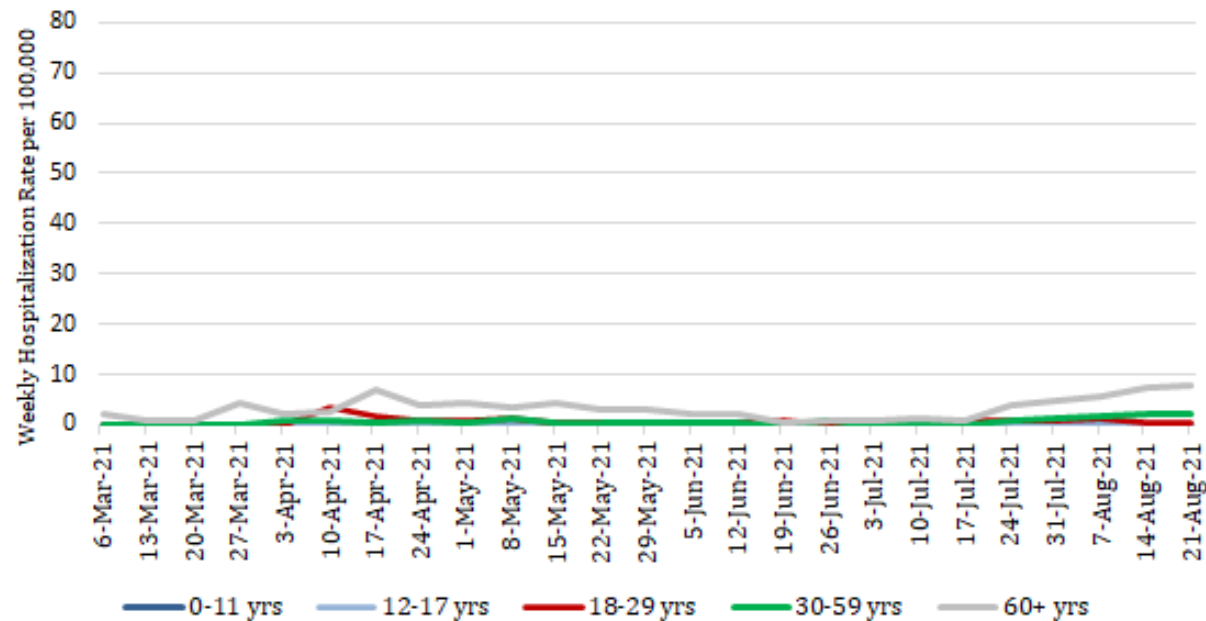
Highest COVID hospitalization rate still among unvaccinated Chicagoans age 60 years+



Unvaccinated Chicago resident hospitalization rates by age

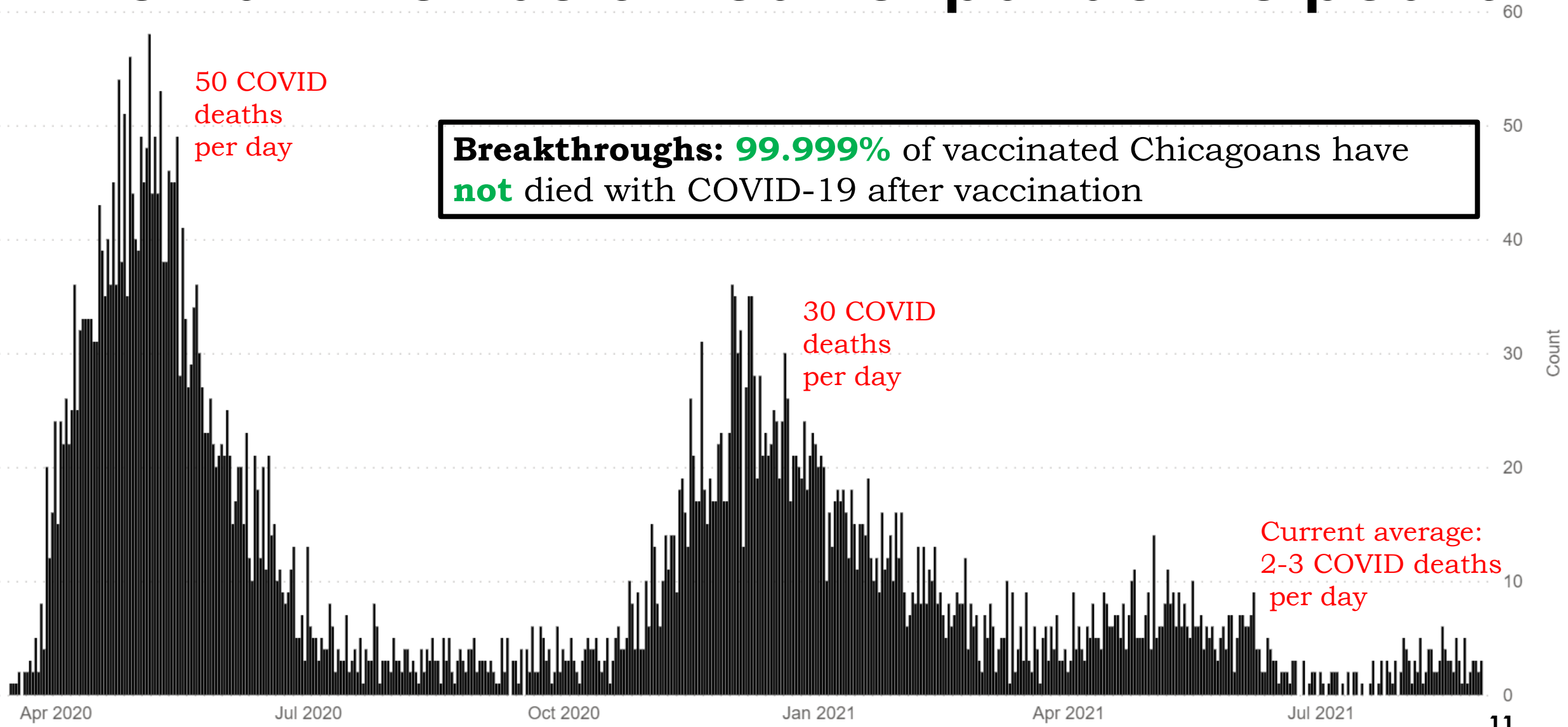


Fully Vaccinated (breakthrough) Chicago resident hospitalization rates by age



Notes: Includes cases among Chicago residents reported into the Illinois Electronic Disease Surveillance System (I-NEDSS) with date of specimen collection 1/1/2021-8/21/2021, pulled 8/25/2021. Vaccination status obtained from the Illinois Comprehensive Automated Immunization Registry (I-CARE) registry. Vaccinated defined as having had at least one dose prior to a positive test. Fully vaccinated defined as completion of vaccine series at least 14 days prior to a positive test. Rate for vaccinated calculated as total hospitalized cases divided by cumulative vaccinated at the end of each week, multiplied by 100,000. Rate for unvaccinated calculated as total hospitalized cases divided by total population minus cumulative vaccinated at the end of each week, multiplied by 100,000.

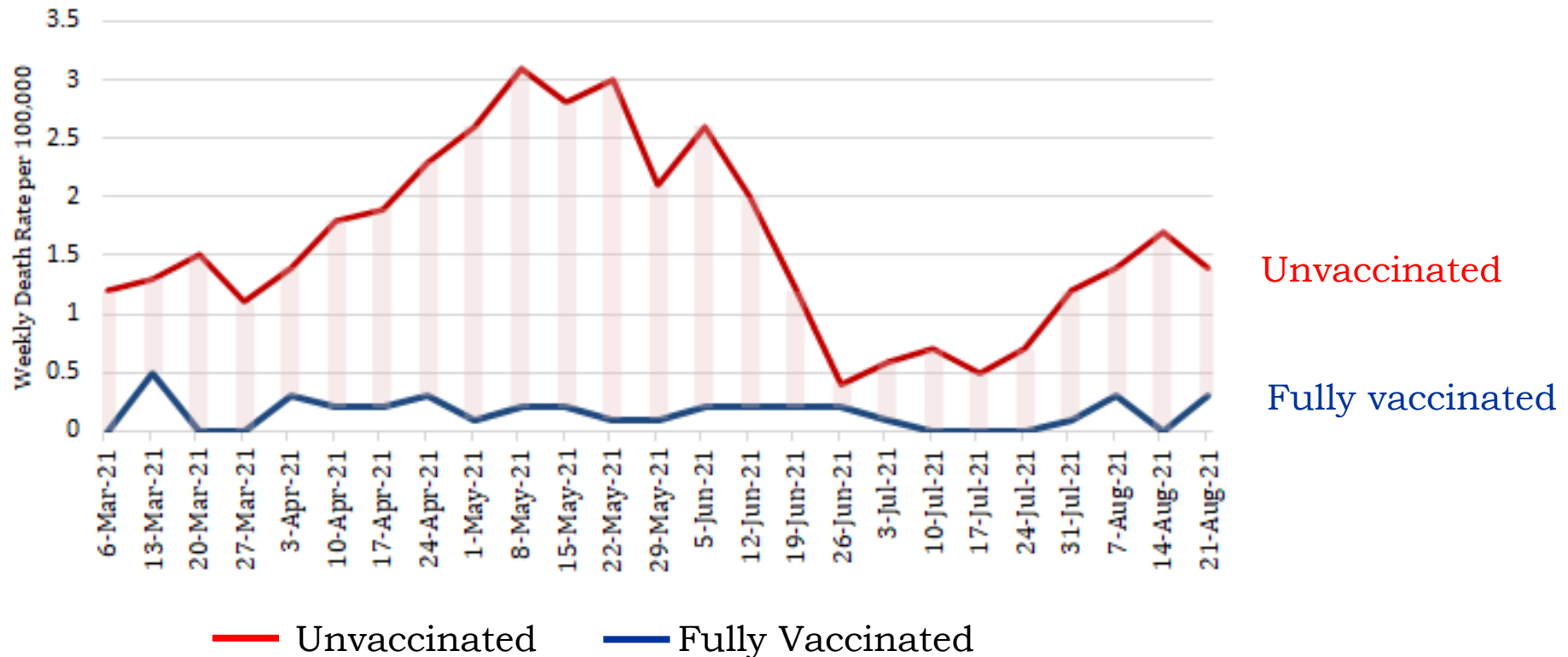
Daily COVID **deaths** for Chicago residents remain well below earlier pandemic peaks



Breakthroughs: 99.999% of vaccinated Chicagoans have **not** died with COVID-19 after vaccination

COVID death rates remain much higher among **unvaccinated** Chicagoans compared to **fully vaccinated** Chicagoans

Chicago Residents' COVID Death Rate per 100,000 by vaccination status

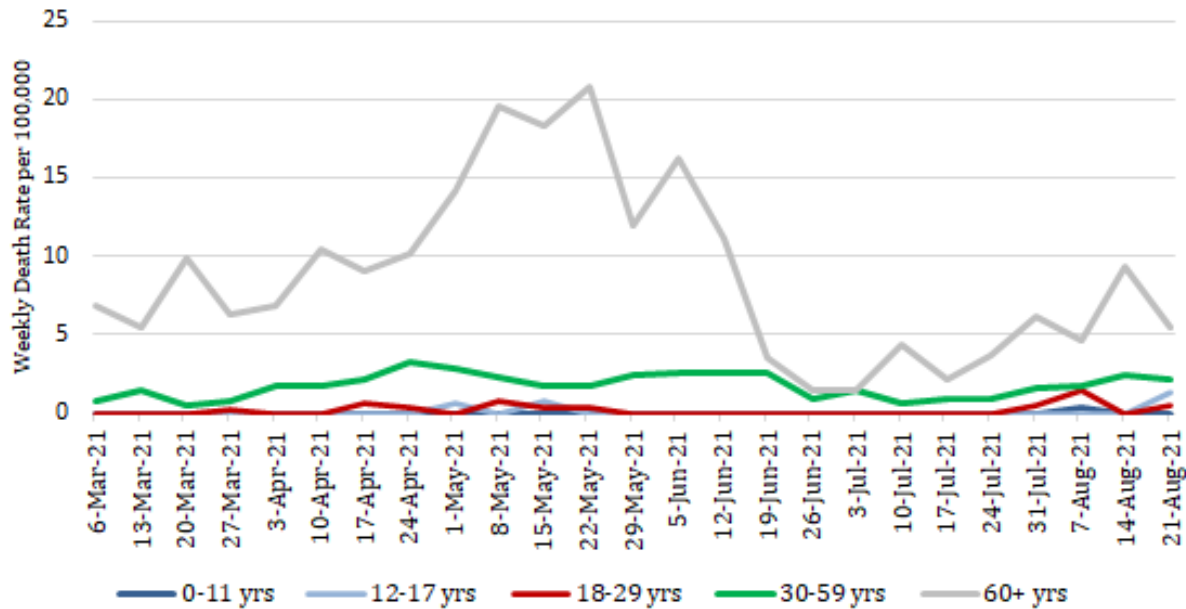


Notes: Includes cases among Chicago residents reported into the Illinois Electronic Disease Surveillance System (I-NEDSS) with date of specimen collection 1/1/2021-8/21/2021, pulled 8/25/2021. Vaccination status obtained from the Illinois Comprehensive Automated Immunization Registry (I-CARE) registry. Vaccinated defined as having had at least one dose prior to a positive test. Fully vaccinated defined as completion of vaccine series at least 14 days prior to a positive test. Rate for vaccinated calculated as total case deaths divided by cumulative vaccinated at the end of each week, multiplied by 100,000. Rate for unvaccinated calculated as total case deaths divided by total population minus cumulative vaccinated at the end of each week, multiplied by 100,000.

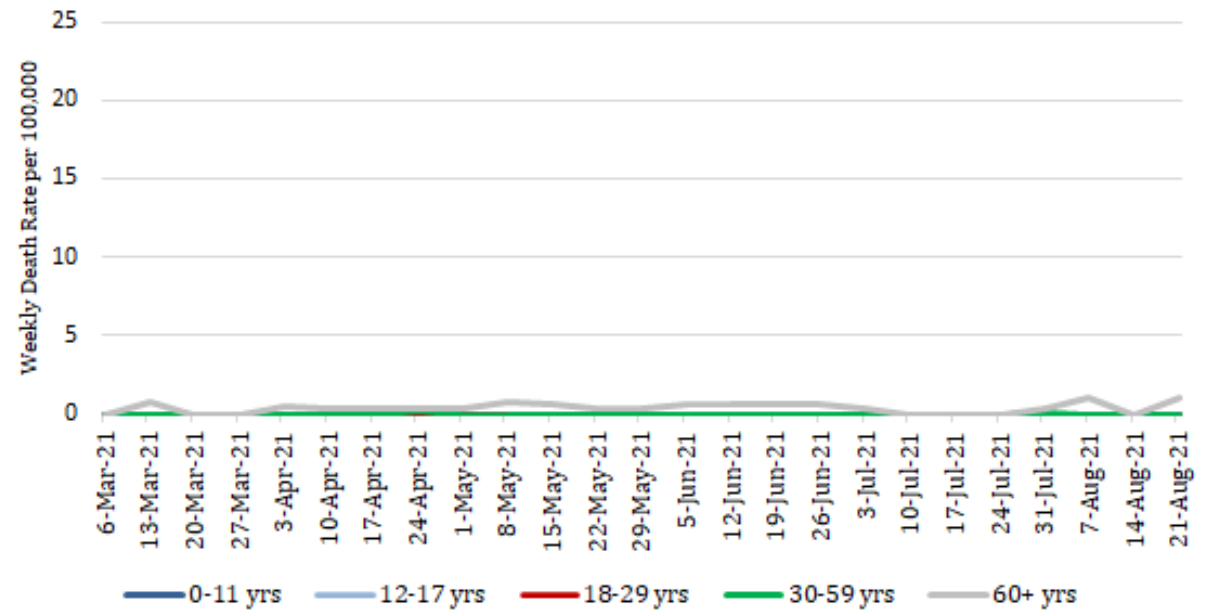
Highest COVID death rate still among unvaccinated Chicagoans age 60 years+



Unvaccinated Chicago resident COVID death rate by age

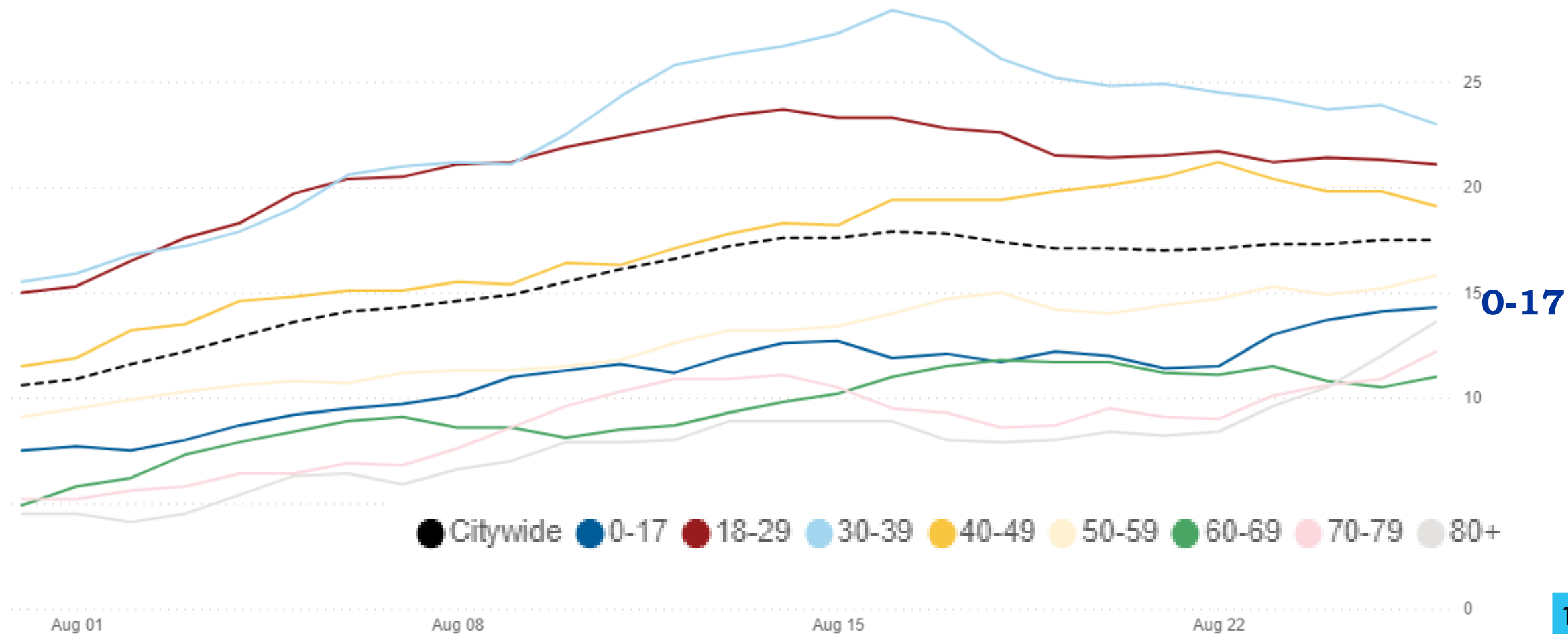


Fully vaccinated (breakthrough) Chicago resident COVID death rate by age



Notes: Includes cases among Chicago residents reported into the Illinois Electronic Disease Surveillance System (I-NEDSS) with date of specimen collection 1/1/2021-8/21/2021, pulled 8/25/2021. Vaccination status obtained from the Illinois Comprehensive Automated Immunization Registry (I-CARE) registry. Vaccinated defined as having had at least one dose prior to a positive test. Fully vaccinated defined as completion of vaccine series at least 14 days prior to a positive test. Rate for vaccinated calculated as total case deaths divided by cumulative vaccinated at the end of each week, multiplied by 100,000. Rate for unvaccinated calculated as total case deaths divided by total population minus cumulative vaccinated at the end of each week, multiplied by 100,000.

Chicago COVID-19 Cases remain relatively low among 0-17 year olds



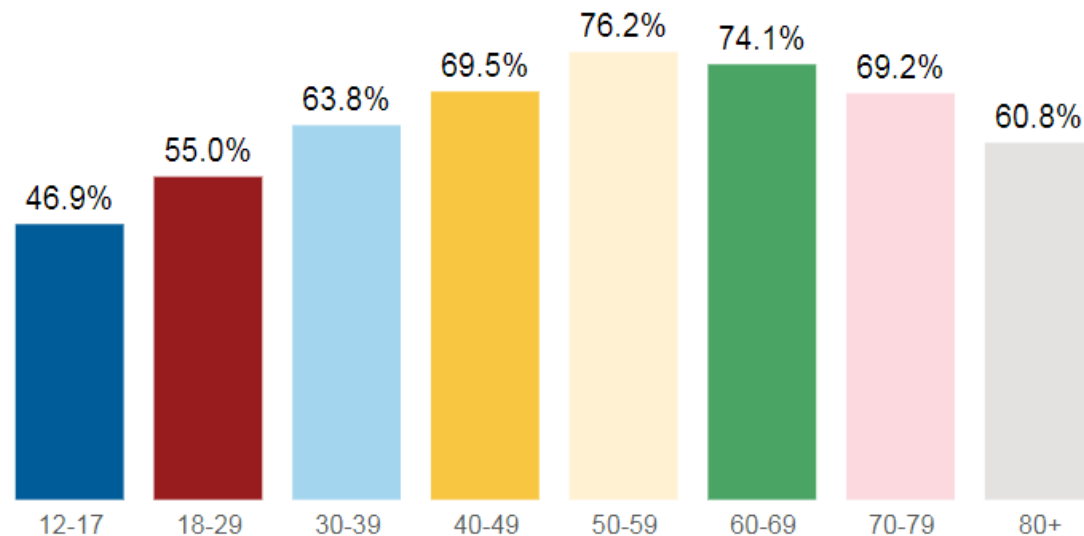
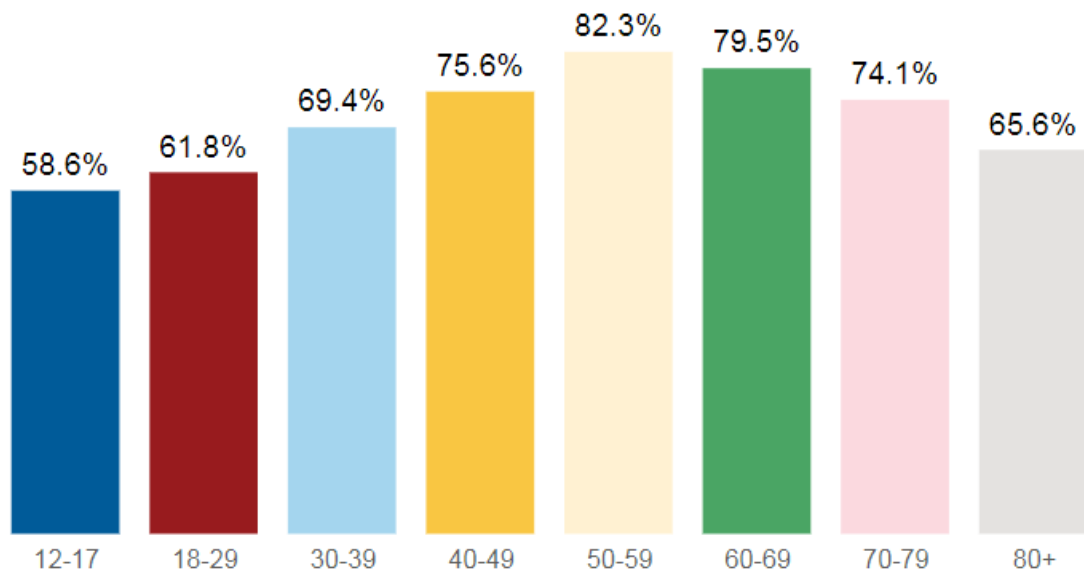


Still working on reaching both **younger and older**

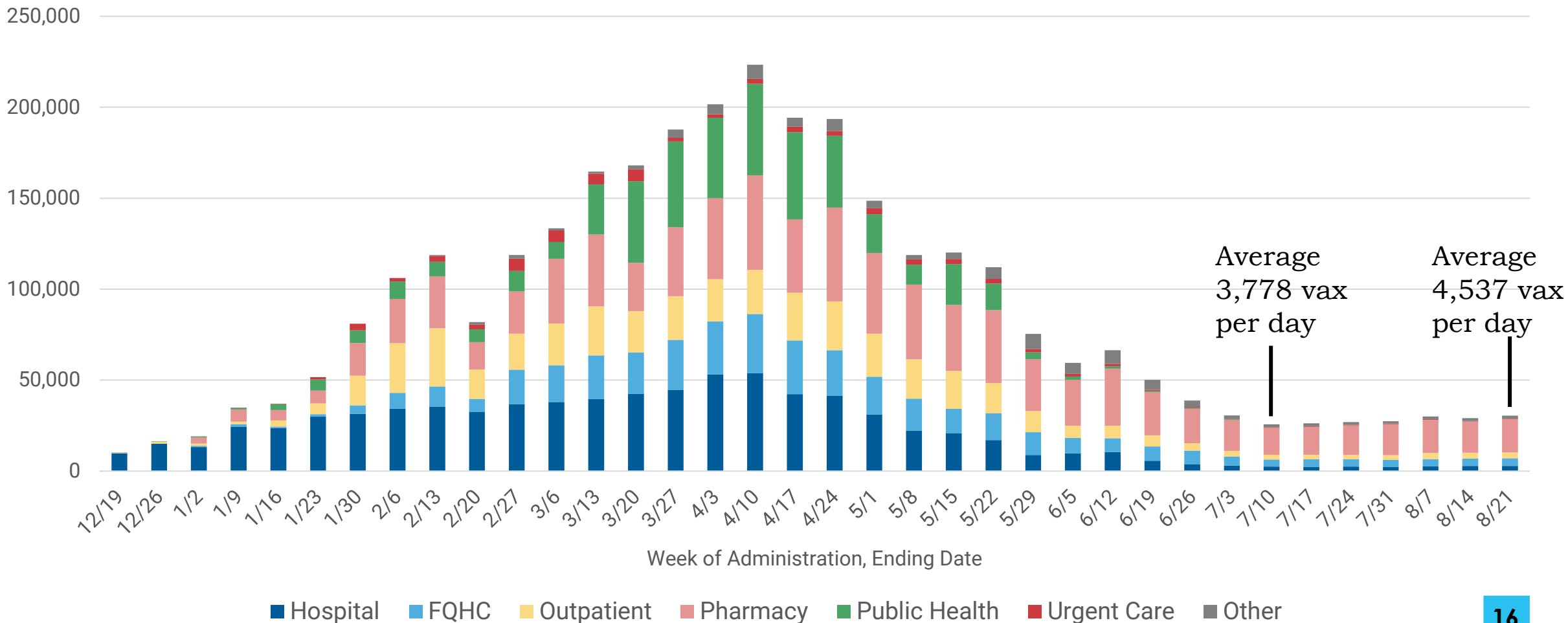
Chicagoans: More than 60% of Chicagoans in all age groups over age 18 years have received a first COVID vaccine dose, and adolescent vaccinations continue to grow most quickly

At least one dose (% vaccinated as of 8/29/2021)

Completed vaccine series (% vaccinated as of 8/29/2021)

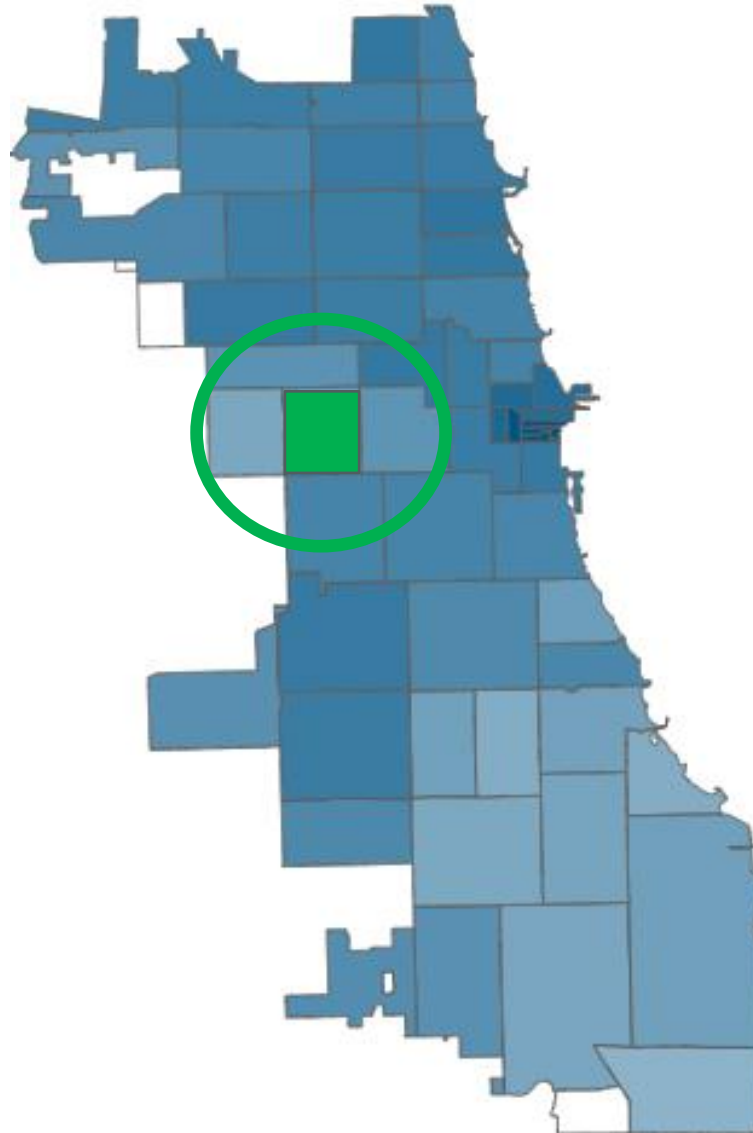


Daily vaccinations up 15% since low in July; majority (60%) of Chicago vaccinations happening in pharmacies



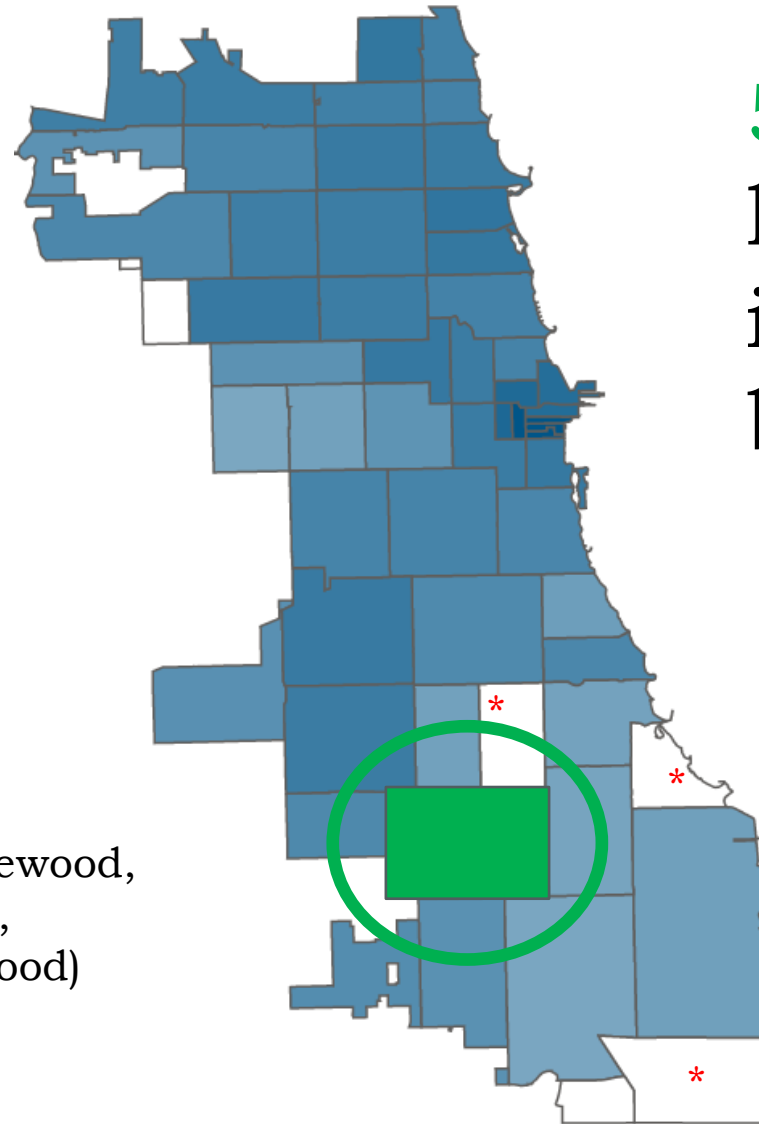
Congratulations to ZIP 60624 for having the **biggest increase** in 1st dose vaccine coverage (ages 12+) since last week

60624 (Austin, East Garfield Park, Humboldt Park, North Lawndale, West Garfield Park)



Percent of Chicago 12+ population with at least 1 dose of COVID-19 vaccine.

Congratulations to ZIP Code **60620** for reaching **50%+** of ages **12y+** with a first dose of COVID vaccine this week



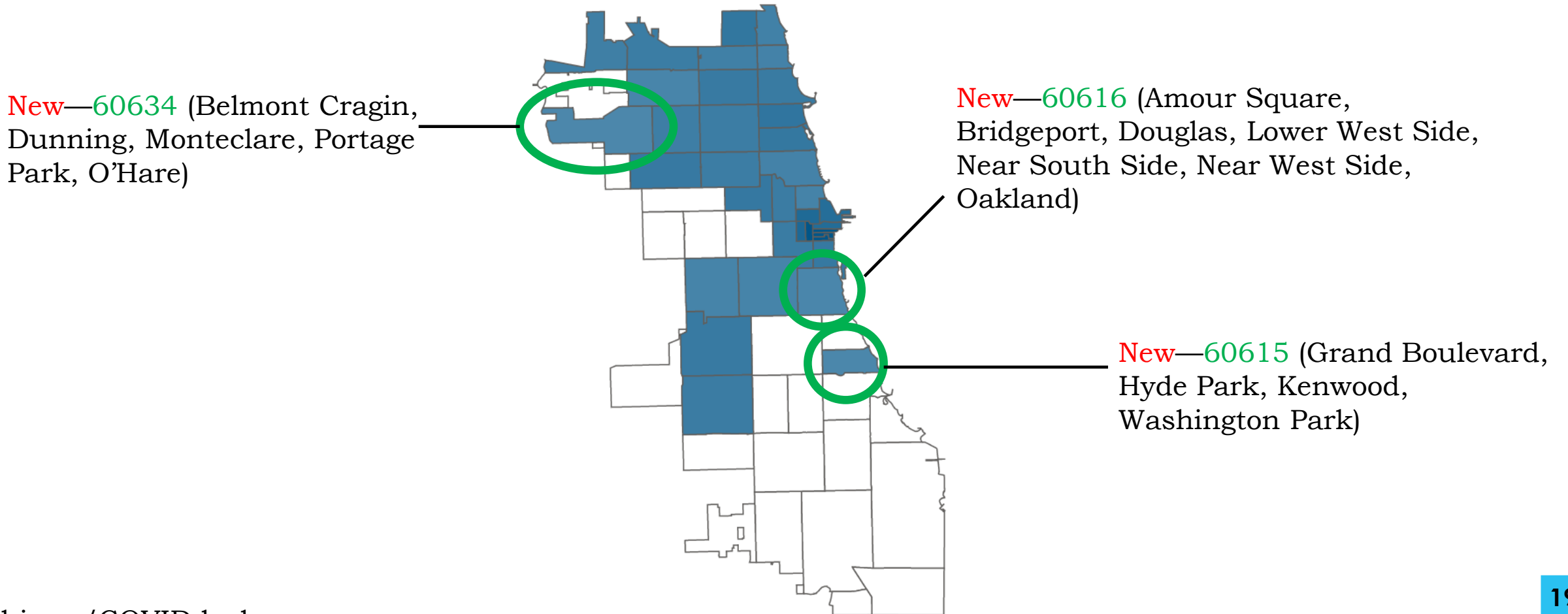
57/60 ZIP codes have reached this important first benchmark

**Just 3 more ZIPs to go for the whole city to hit this first important benchmark (60621, 60649, 60633)*

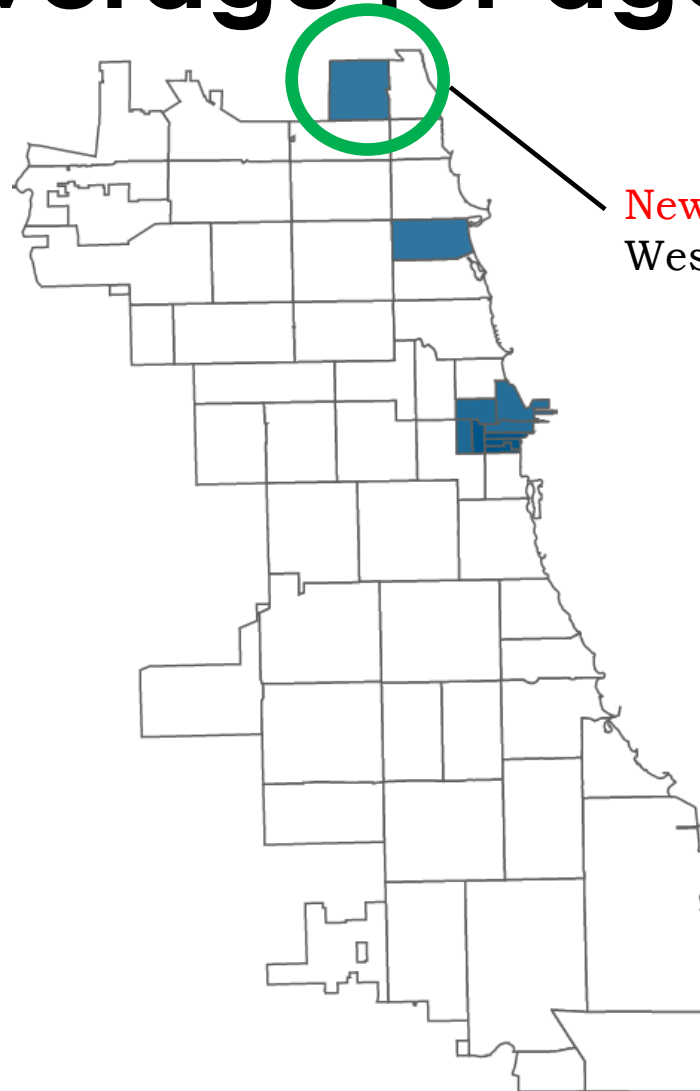
NEW—**60620** (Ashburn, Auburn Gresham, Beverly, Chatham, Englewood, Greater Grand Crossing, Roseland, Washington Heights, West Englewood)

Percent of Chicago 12+ population with at least 1 dose of COVID-19 vaccine

Congratulations to the 36 Chicago ZIP codes that now have 70%+ 1st dose vaccine coverage for ages 12y+



Congratulations to the 10 Chicago ZIP codes that now have 80%+ 1st dose vaccine coverage for ages 12y+



New—60645 (Rogers Park, West Ridge)

60602

60603

60604

60606

60661

60654

60601


60611

60613

60645

Percent of Chicago 12+ population with at least 1 dose of COVID-19 vaccine.





Reminder to get vaccinated by this weekend:

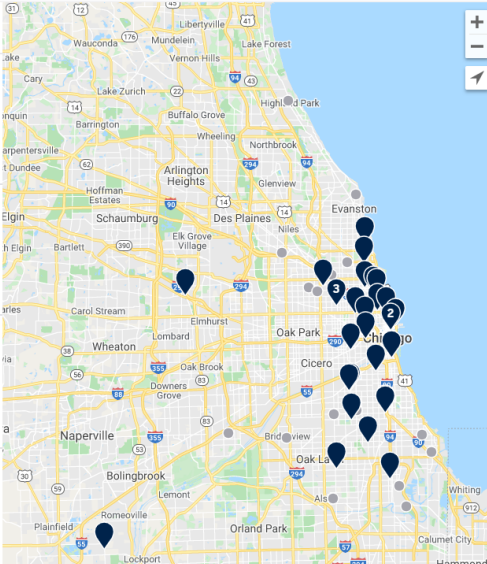
 **Governor's Executive Order requires vaccination for all Illinois health care workers, school personnel, and higher education settings**

- **Health care workers, education personnel K-12, higher education personnel**
 - Employed by, volunteering for, or contracted to provide services, or in close contact on a regular basis
- **Higher education students**
 - Enrolled on campus or affiliated off-campus location (public and private universities, colleges, community colleges, junior colleges, business, technical or vocation schools, other institutions offering post-secondary school instruction)
- By order, all must receive first dose of COVID vaccine within 10 days of order issuance (**by Sunday, Sept 5**).
- By order, for two-dose vaccine, must be FULLY vaccinated **within 30 days** following the first dose.

COVID-19 vaccines remain **FREE** and widely **AVAILABLE**

- Most Chicagoans are receiving COVID-19 vaccine from **pharmacies**
 - Walgreens, Mariano's, CVS, Walmart, Jewel-Osco, Costco...
 - Walk-ins or appointments available, contact individual providers for details
- Your **healthcare provider**
- **Protect Chicago At-Home**
 - Register online at Chicago.gov/AtHome or call **312-746-4835**
- Zocdoc.com/vaccine

COVID-19 Vaccine		
	Michigan Avenue Immediate Care - 1605 Location COVID-19 Vaccination Facility Michigan Avenue PC Vaccine 1605 - MODERNA Vaccine 180 N Michigan Ave, Suite 1605, Chicago, IL, 60611	📅 Appointments available Today View availability
	Loop Medical Center - Streeterville Location COVID-19 Vaccination Facility Loop Medical Center - Vaccine 432 East Grand Ave, Suite B, Chicago, IL, 60611	📅 Appointments available Today View availability
	Wellness Home - South Morgan COVID-19 Vaccination Facility WH, South Morgan - Vaccine (Moderna and Pfizer) 3353 S Morgan St, Chicago, IL, 60608	📅 Appointments available Today View availability
	Mount Sinai Hospital COVID-19 Vaccination Facility Mount Sinai Hospital 12 + 1500 S Fairfield Ave, Chicago, IL, 60608	📅 Appointments available Tomorrow View availability



★ Community Vaccination Events Continue

TONIGHT

Noble Gary Comer Middle School (Greater Grand Crossing)
6:00-8:00PM

WEDNESDAY

Atlas Senior Center (South Shore)
10:00AM-2:00PM

THURSDAY

Kennedy-King College Unity (Englewood)

SATURDAY

Vax & Relax at Carrie Ellas Salon (Roseland)
2:00-4:00PM



More events on [Chicago.gov/VaxCalendar](https://chicago.gov/VaxCalendar)

★ Chicago indoor masking mandate remains in place

- All individuals age 2+, regardless of vaccination status, must wear a mask in all indoor public settings
- BACP is enforcing this mandate, including signage and compliance
- Resources for businesses are available at [Chicago.gov/Reopening](https://www.chicago.gov/Reopening)
- To submit a complaint relating to COVID-19, call 3-1-1 or visit 311.Chicago.gov

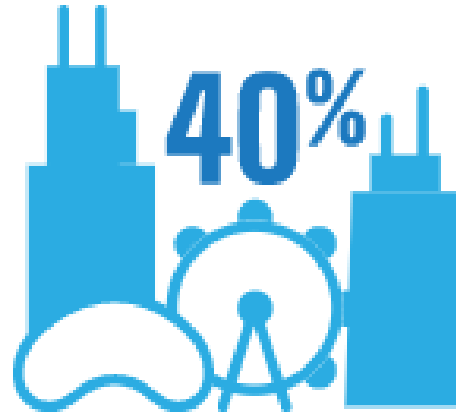




UN [*] SPOKEN



45% of Chicagoans think mental health support would be beneficial for themselves



40% of Chicagoans feel mental health is one of the greatest challenges facing Chicago today

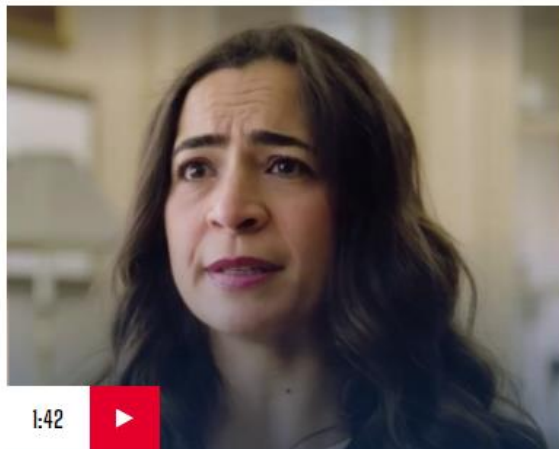


42% of Chicagoans know where to go to get mental health support if they need it

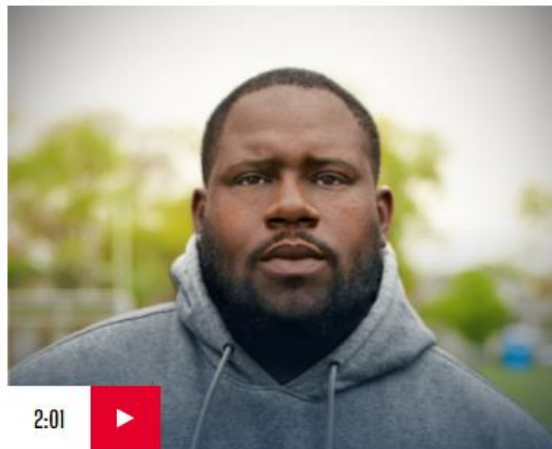
New Mental Health Resource Website

HEAR OTHERS' STORIES

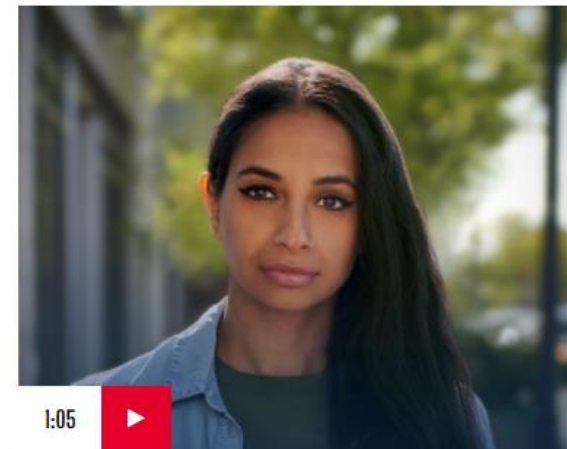
Here in Chicago, you're not alone. Many of your neighbors have gone through similar challenges with their own mental health. Hear their stories about their own journeys, and know that you deserve to get the support you need, too.



Unspoken Barriers: Dr. Ballestas



What Needs To Be Said: Aaron



What Needs To Be Said: Ashima

MentalHealth.chicago.gov

New Mental Health Resource Website

FIND A CARE CENTER NEAR ME



Use Current Location

Greater Grand/Mid-South Mental Health Center (MHC)

4314 S Cottage Grove Ave, Chicago, IL, 60653

312-747-0036

Hours:

Mon-Fri: 8:30 AM-4:30 PM

Services Offered:

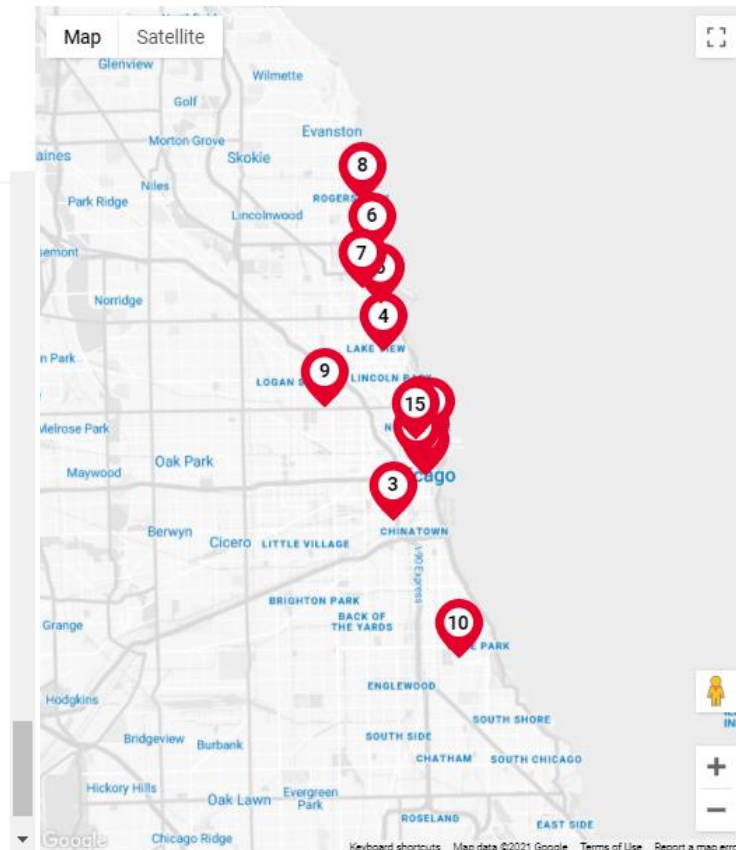
Individual counseling

Payment:

Free, Sliding Fee, Self Pay, Insurance

Additional information:

Proof of ID, Proof of Insurance, Proof of Residence, Proof of Income, ADA Accessible, Wheelchair accessible, Blind accommodation, Deaf and hard of hearing



Mental Health Symptoms & Conditions

Understanding some common mental health conditions and their symptoms is a great first step in caring for your mental health.

[Learn More](#)



Treating & Preventing Mental Health Conditions

No matter where you're at in your mental health journey, you're not alone. Discover the ways we can support you.

[Learn More](#)



Common Questions About Mental Health

It's normal to have questions about mental health. From finding support to talking about mental health, we have answers to questions that many people have.

[Learn More](#)



PROTECT
CHICAGO ★

PROTEGE A
CHICAGO ★