



# Protecting Chicago: Phase IV Re-Opening Metrics Update

**April 3rd, 2021**

**(Data current through 3/31/2021)**

# Chicago COVID-19 Community Metrics, Phase IV, current status

	Risk level as of 4/2/2021	Very high risk	High risk	Moderate risk	Lower risk	Controlled transmission
<b>COVID cases diagnosed per day</b> <small>Chicago residents 7-day rolling daily average</small>	<b>VERY HIGH</b> <b>570*</b>	<b>800+</b> -or- <b>*7+ consecutive days more than 15% higher than daily average one week prior</b>	<b>400 - 799</b> -or- 5+ consecutive days more than 10% higher than daily average one week prior	<b>200 - 399</b> -and- decreasing or stable compared to daily average one week prior	<b>20 - 199</b> -and- decreasing or stable compared to daily average one week prior	<b>&lt;20</b>
<b>COVID test positivity</b> <small>Chicago residents 7-day rolling daily average</small>	<b>VERY HIGH</b> <b>4.9%*</b>	<b>10%+</b> -or- <b>*7+ consecutive days more than 15% higher than daily average one week prior</b>	<b>6.6 - 9.9%</b> -or- 5+ consecutive days more than 10% higher than daily average one week prior	<b>5.0 - 6.5%</b> -and- decreasing or stable compared to daily average one week prior	<b>2 - 4.9%</b> -and- decreasing or stable compared to daily average one week prior	<b>&lt;2%</b>
<b>Emergency dept visits for COVID-like illness</b> <small>Chicago hospitals 7-day rolling daily average</small>	<b>HIGH</b> <b>83</b>	<b>90+</b> -or- 7+ consecutive days more than 15% higher than daily average one week prior	<b>80 - 89</b> -or- 5+ consecutive days more than 10% higher than daily average one week prior	<b>60 - 79</b> -and- decreasing or stable compared to daily average one week prior	<b>20 - 59</b> -and- decreasing or stable compared to daily average one week prior	<b>&lt;20</b>
<b>ICU beds occupied by COVID patients</b> <small>Chicago hospitals 7-day rolling daily average</small>	<b>LOWER</b> <b>87</b>	<b>400+</b> -or- <20% overall ICU bed availability	<b>300 - 399</b> -or- <22% overall ICU bed availability	<b>100 - 299</b>	<b>20 - 99</b>	<b>&lt;20</b>

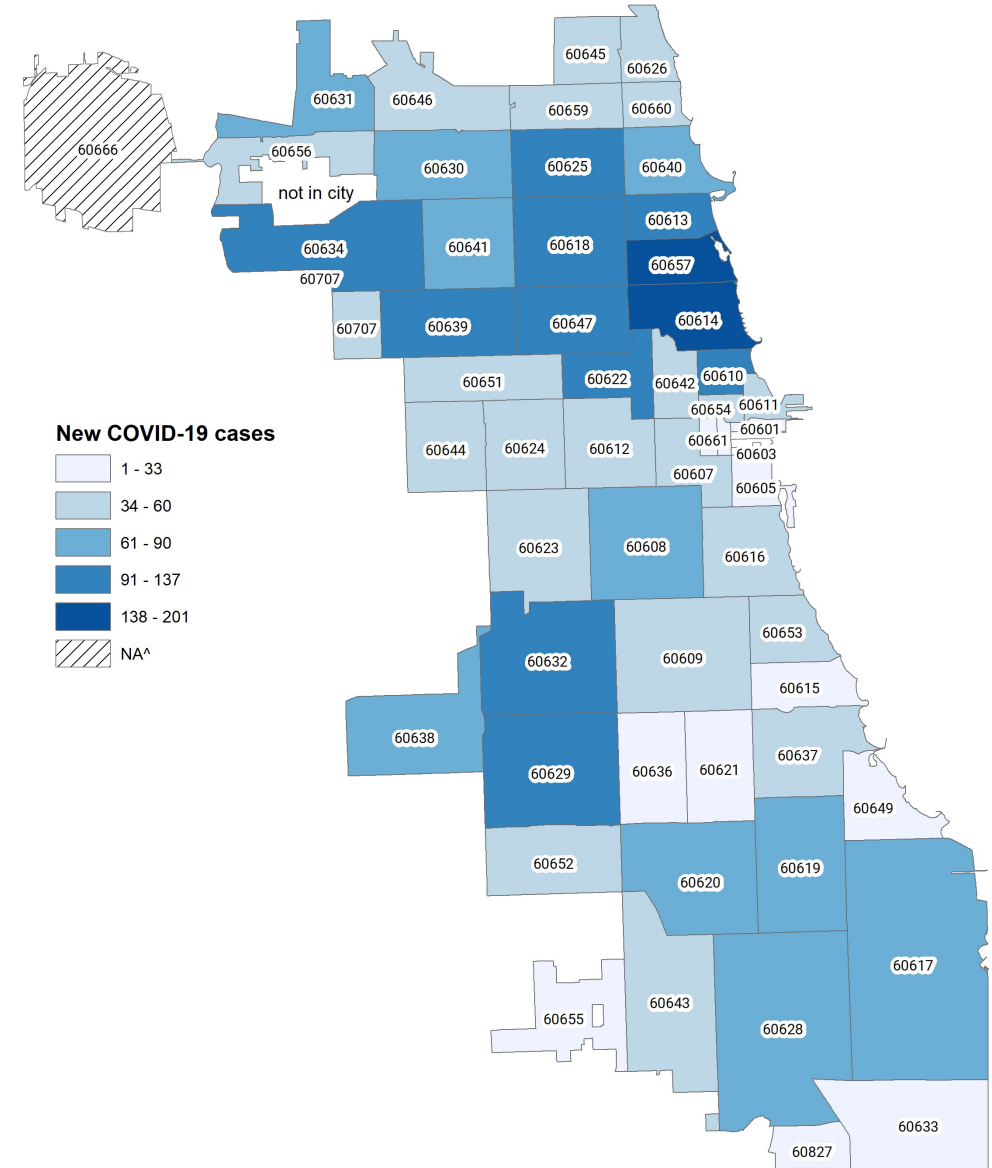
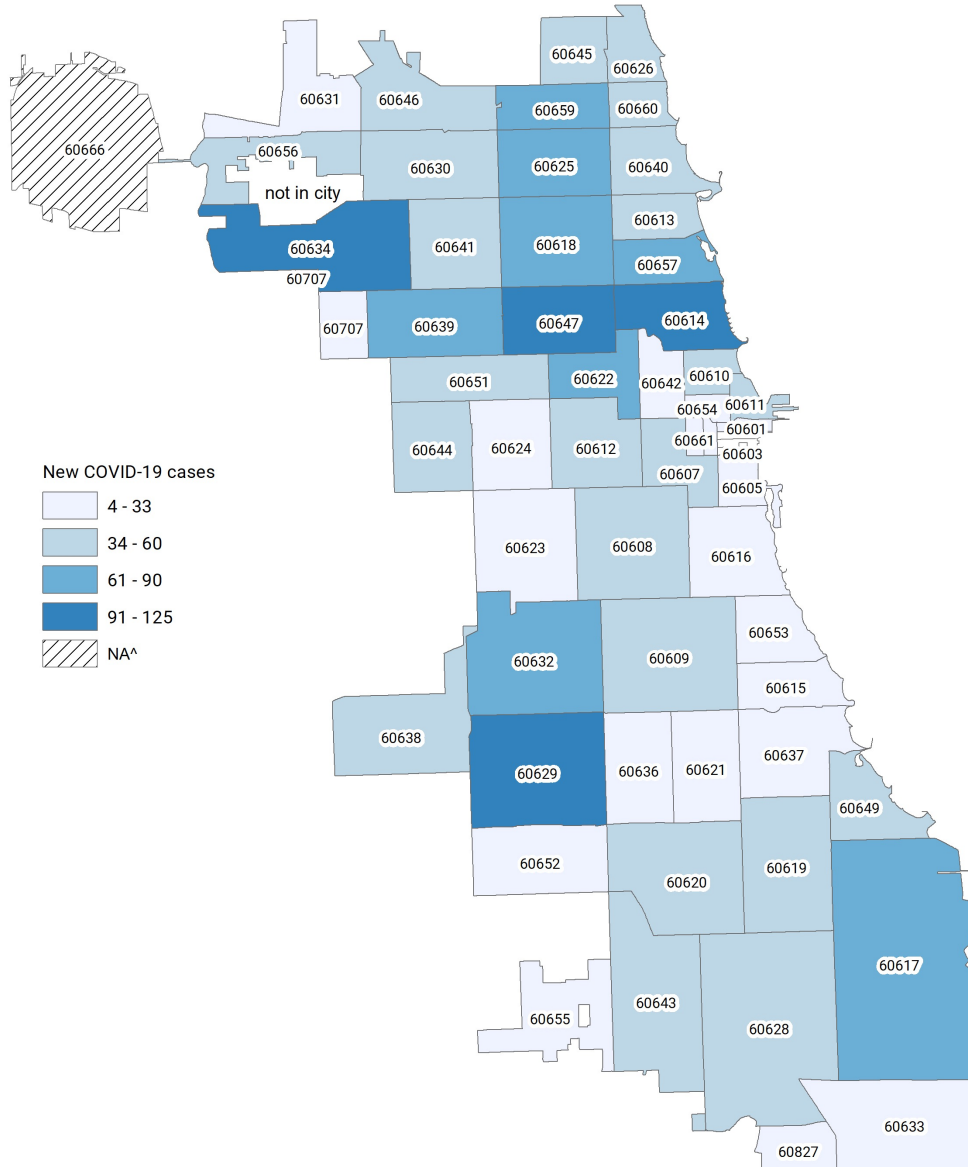


# Recent COVID-19 Outcomes

# Changes in weekly case counts by zip code

Week ending 3/20/21 (n=2,061)

Week ending 3/27/21 (n=3,575)



Note: Week is data through the Wednesday after the end date for the week. Week 11 ending March 20<sup>th</sup> and week 10 ending March 27<sup>th</sup>

# Weekly changes in COVID-19 cases by race/ethnicity and age group for week ending March 27<sup>th</sup> (comparisons to week ending Mar 20<sup>th</sup>)



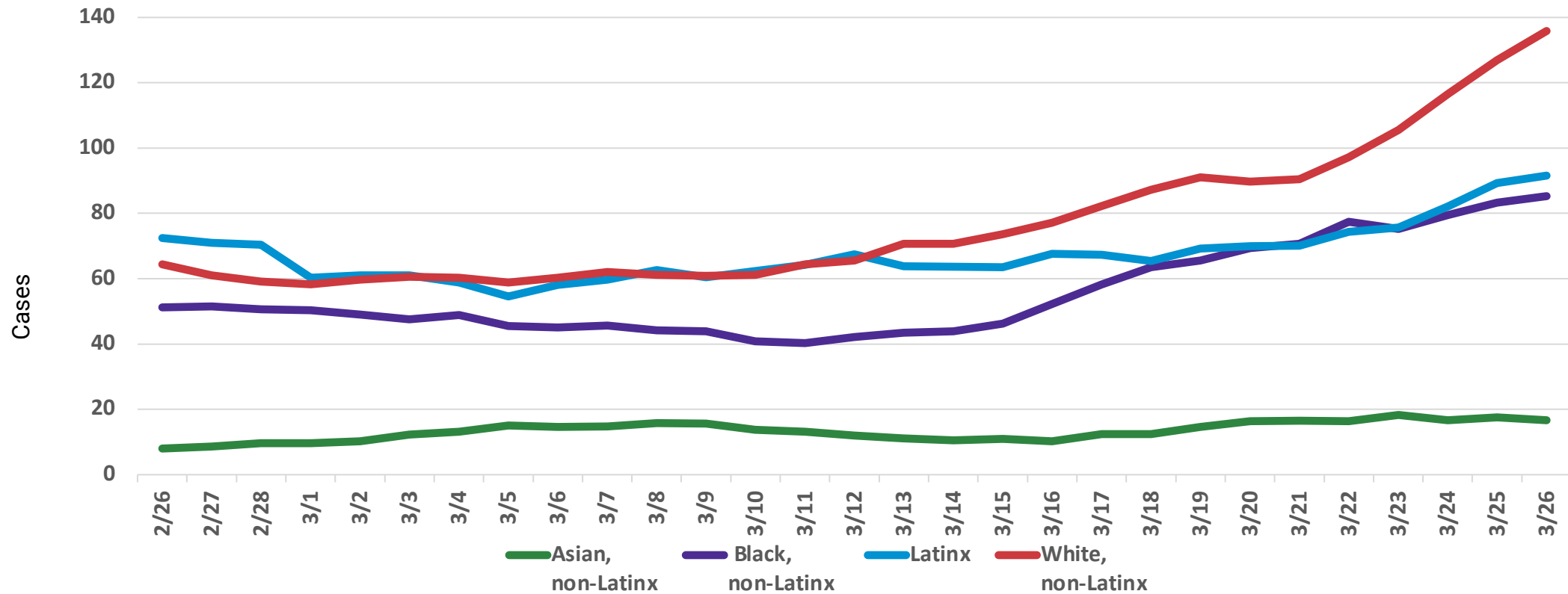
Age Group (years)	Latinx	% of Age grp	Change from last week	Black, NL	% of Age grp	Change from last week	White, NL	% of Age grp	Change from last week	Asian, NL	% of Age grp	Change from last week	Total	Change from last week
0-17	131	42%	+56	67	22%	+21	62	20%	+15	12	4%	+3	422	+146
18-44	439	24%	+167	366	20%	+201	820	45%	+467	75	4%	+19	2,287	+1,112
45-64	148	25%	+27	166	28%	+75	202	34%	+78	29	5%	+17	739	+263
65+	31	20%	+2	65	41%	+30	30	28%	+12	4	3%	-3	188	+54
Total	749	26%	+252	660	23%	+327	1,128	39%	+572	120	4%	+36	3,636	+1,575

Percentages are computed using confirmed COVID-19 cases with known race/ethnicity.

# Incident cases are highest and increasing fastest for White, non-Latinx.



COVID-19 Cases, on Specimen Date, by Race/Ethnicity, rolling 7-day average

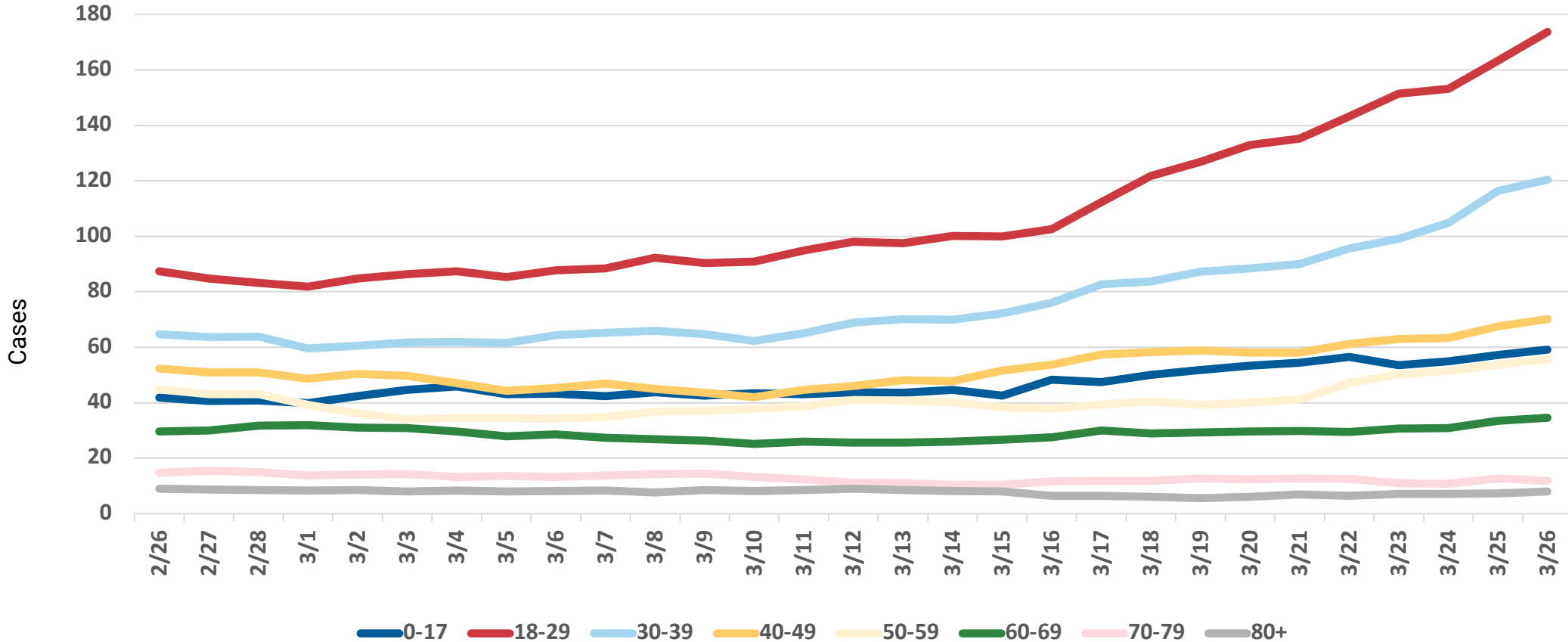


Daily COVID-19 cases with known specimen report date and race/ethnicity information. Case is defined as positive result on PCR or antigen test. This case definition was applied to the entire epidemic beginning on 2/8/2021 therefore these results are different from results reported prior. Source: INEDSS.

# Incident cases are highest and increasing fastest for 18-29 year olds followed by 30-39 year olds.

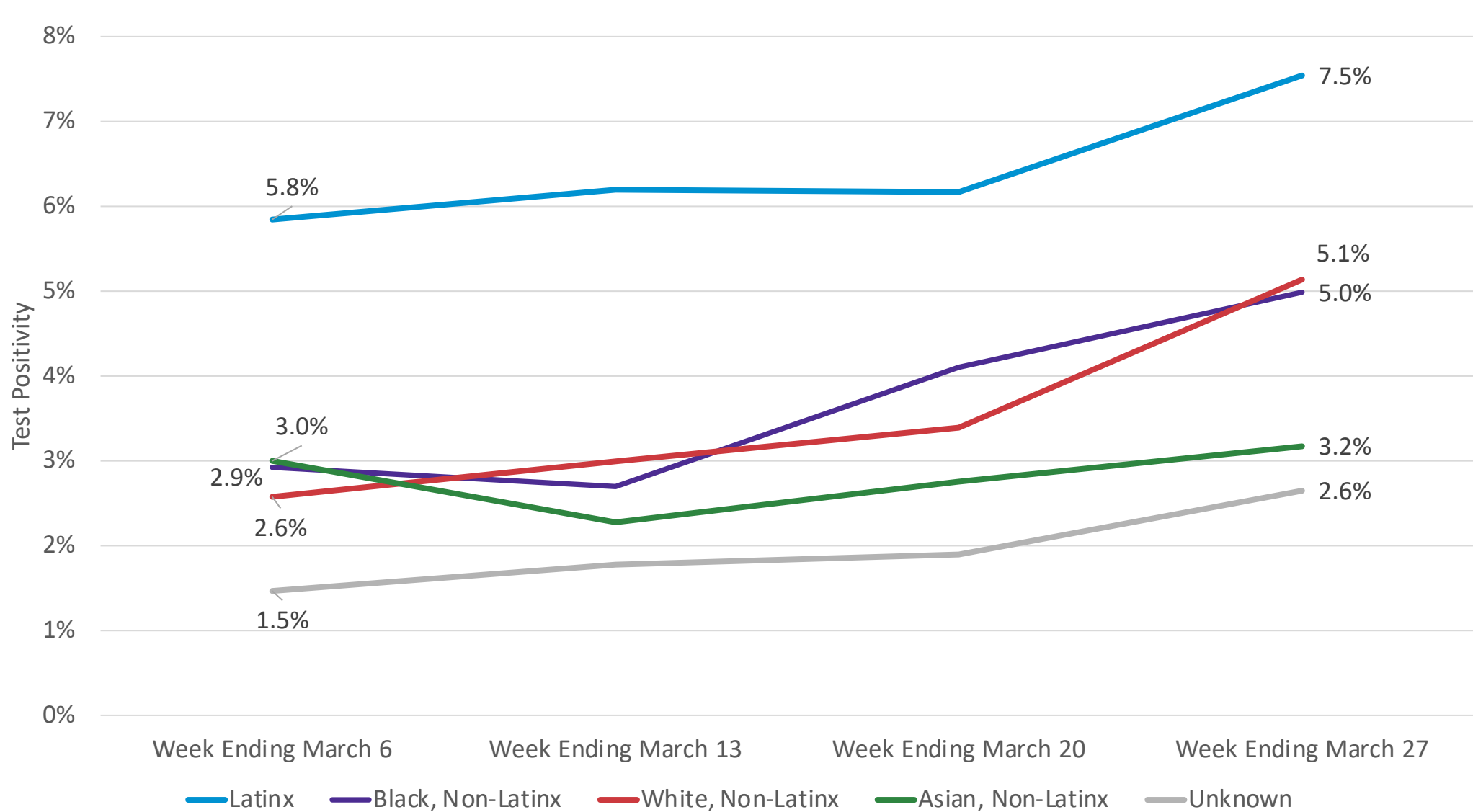


COVID-19 Cases, on Specimen Date, by Age Group, rolling 7-day average



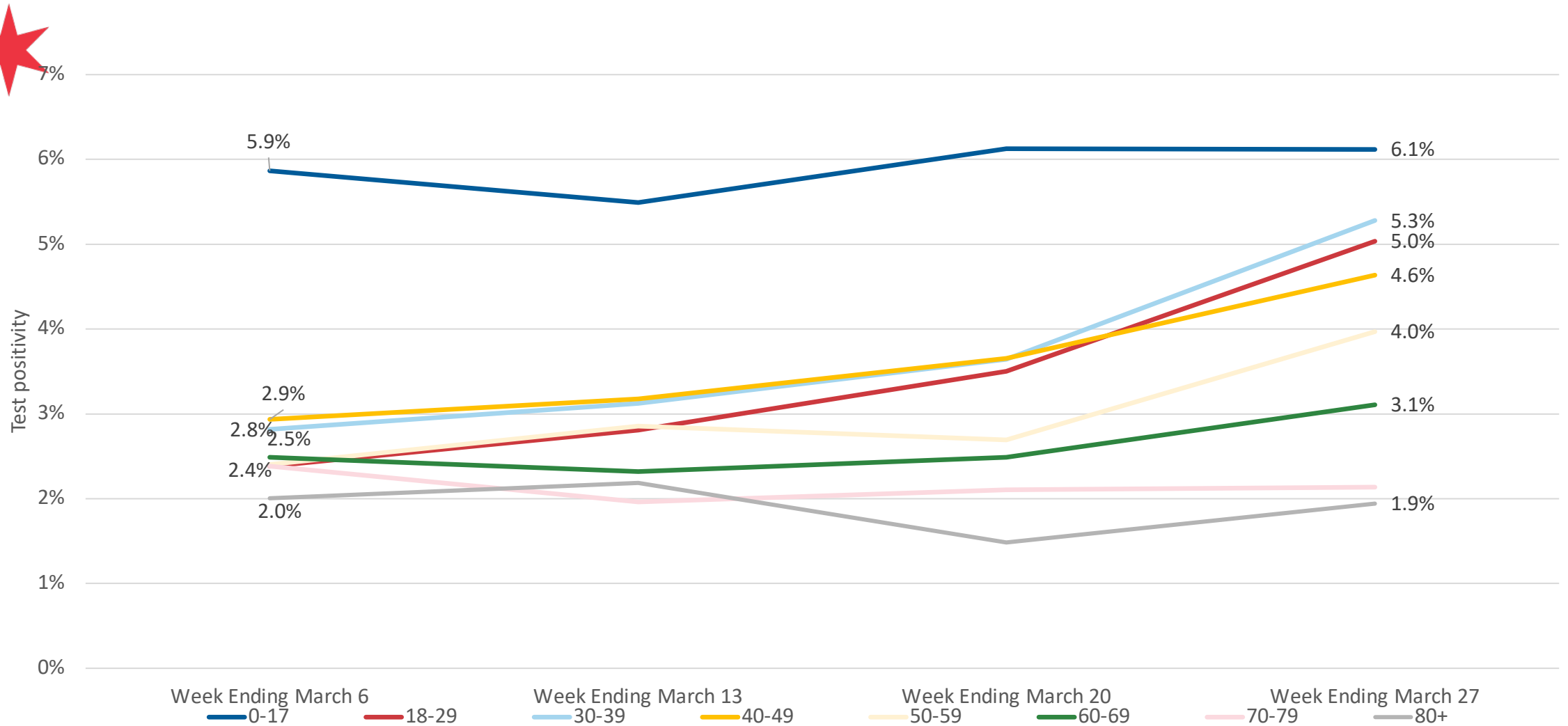
Daily COVID-19 cases with known specimen report date and race/ethnicity information. Case is defined as positive result on PCR or antigen test. This case definition was applied to the entire epidemic beginning on 2/8/2021 therefore these results are different from results reported prior. Source: INEDSS.

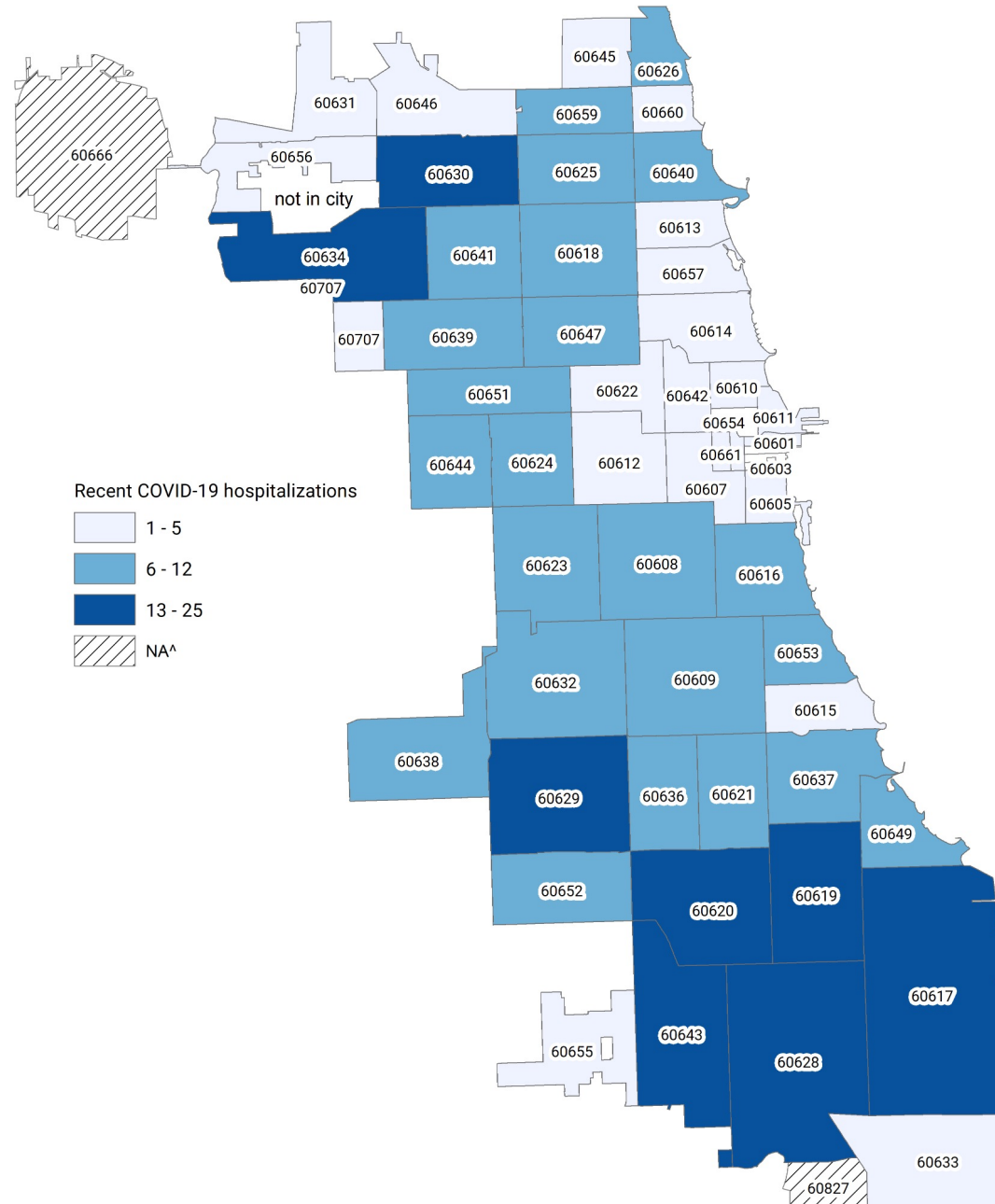
# Test positivity by Race-Ethnicity (Feb 27 – March 27, 2021)





# Test positivity by Age through (Feb 27 – March 27, 2021)





Recent COVID-19 hospitalizations by Chicago zip code (Feb 27– Mar 27, 2021) n=602

Please note that COVID-19 hospitalizations have significant reporting delays

# Recent hospitalizations by race/ethnicity and age group (Feb 27– Mar 27, 2021)



Age Group (years)	Latinx	% of Age grp	Black, NL	% of Age grp	White, NL	% of Age grp	Asian, NL	% of Age grp	Total
0-17	6	35%	5	29%	3	18%	1	6%	18
18-44	49	34%	59	41%	26	18%	4	3%	149
45-64	41	20%	98	48%	45	22%	4	2%	213
65+	37	18%	95	45%	57	27%	8	4%	222
Total	133	23%	257	45%	131	23%	17	3%	602

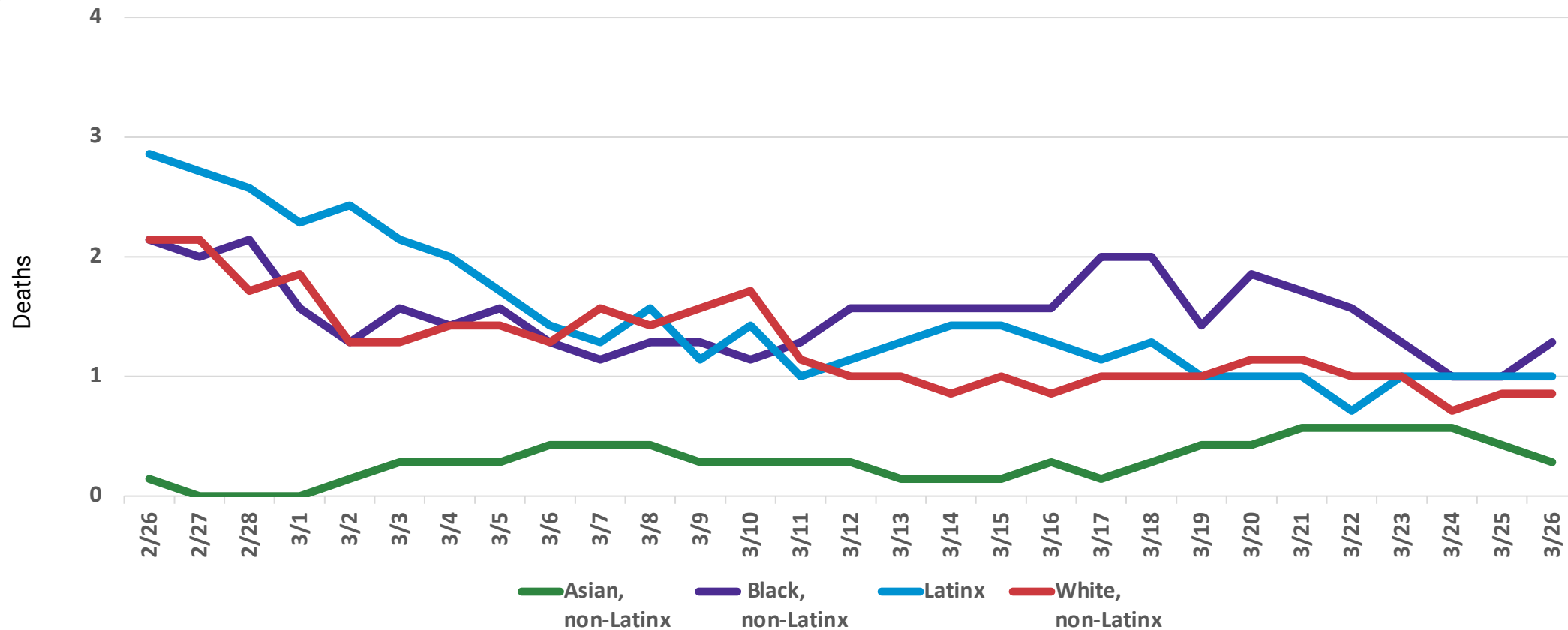
Percentages are computed using COVID-19 hospitalizations with known race/ethnicity.

Data pulled Wednesday 3/31/21

# Daily COVID-19 deaths are currently similar for most race/ethnicities.



## COVID-19 Deaths, by Race/Ethnicity, rolling 7-day average



Daily COVID-19 deaths reported for Chicago residents with known death date. Data source: INEDSS. A five day lag is imposed to reduce inaccuracy created by reporting delays.



# Reopening Metrics



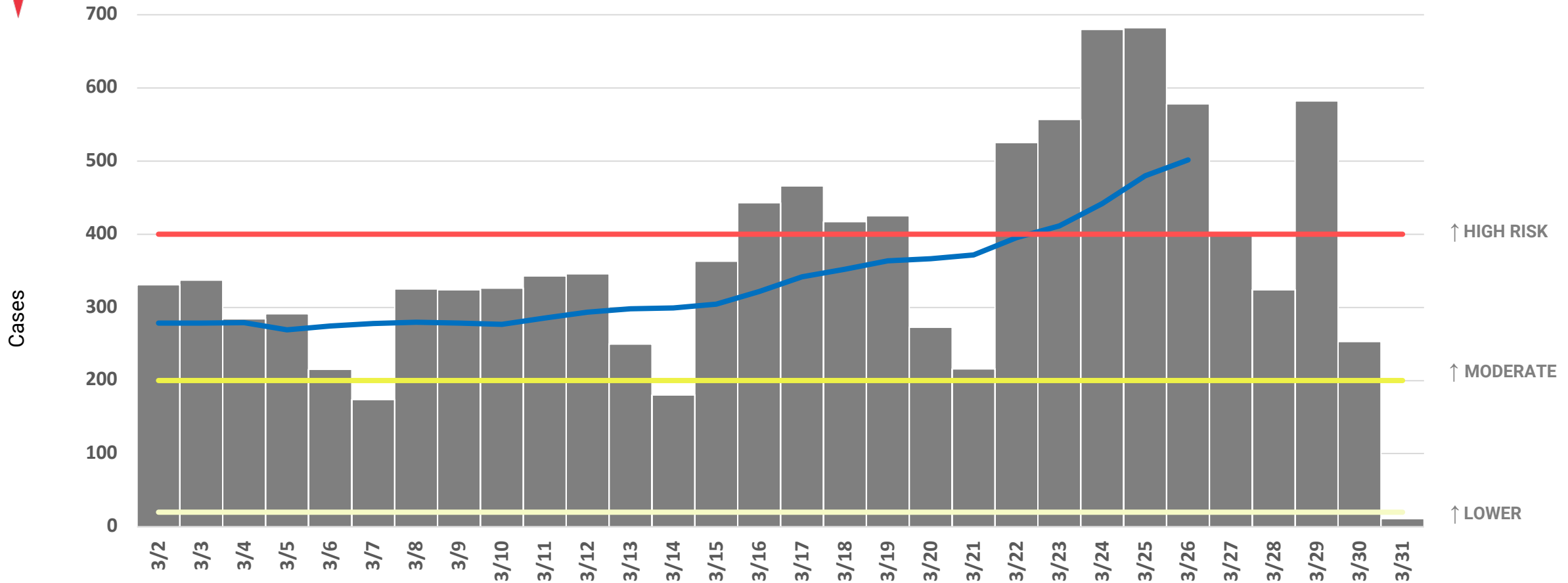
# COVID-19 Cases

# Daily COVID-19 case incidence up 87% over past 14 days

Date	Incident case count, 7DRA	Consecutive days with 10%+ change	Consecutive days with 15%+ change	Risk level	# of days 10%+ in last week
4/2/2021	570	14	14	VERY HIGH	7



COVID-19 cases, daily counts and rolling 7-day average, specimen date

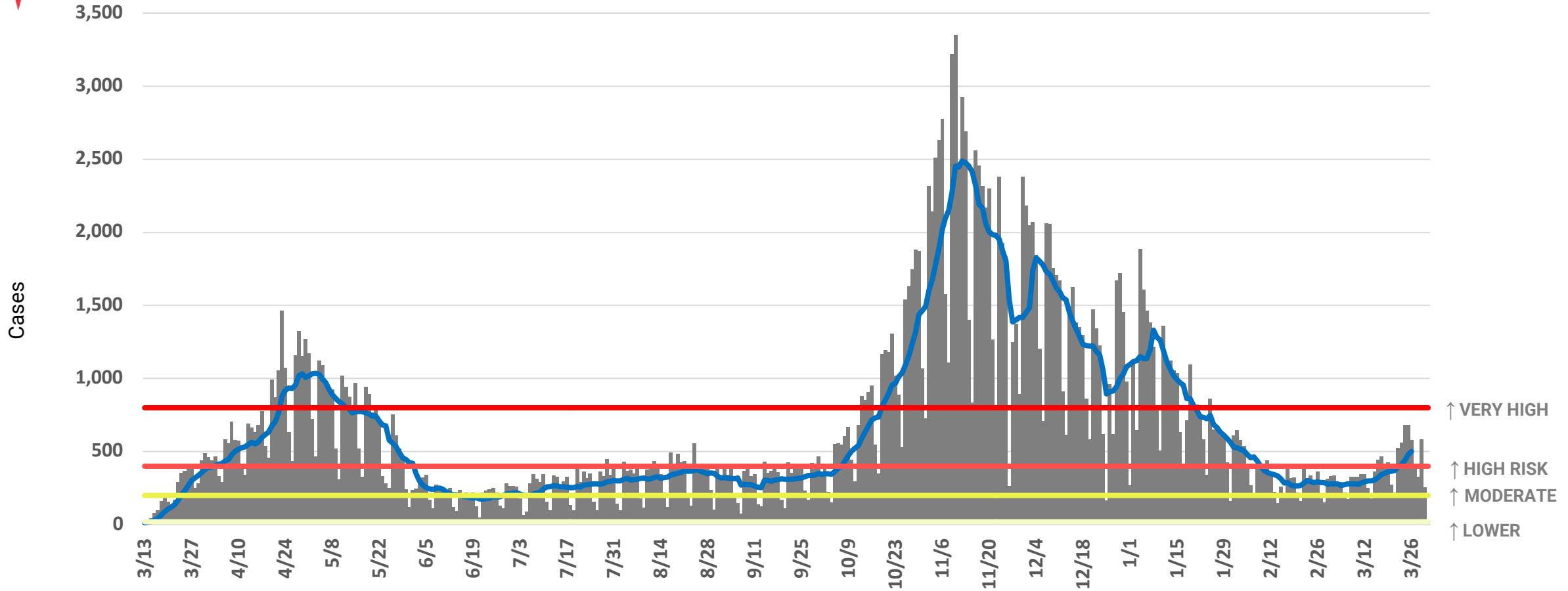


Daily COVID-19 cases with known specimen report date. Case is defined as positive result on PCR or antigen test. This case definition was applied to the entire epidemic beginning on 2/8/2021 therefore these results are different from results reported prior. Source: INEDSS.

# COVID-19 case incidence risk level varies over time.



COVID-19 cases, daily counts and rolling 7-day average, specimen date



Daily COVID-19 cases with known specimen report date. Case is defined as positive result on PCR or antigen test. This case definition was applied to the entire epidemic beginning on 2/8/2021 therefore these results are different from results reported prior. Source: INEDSS.



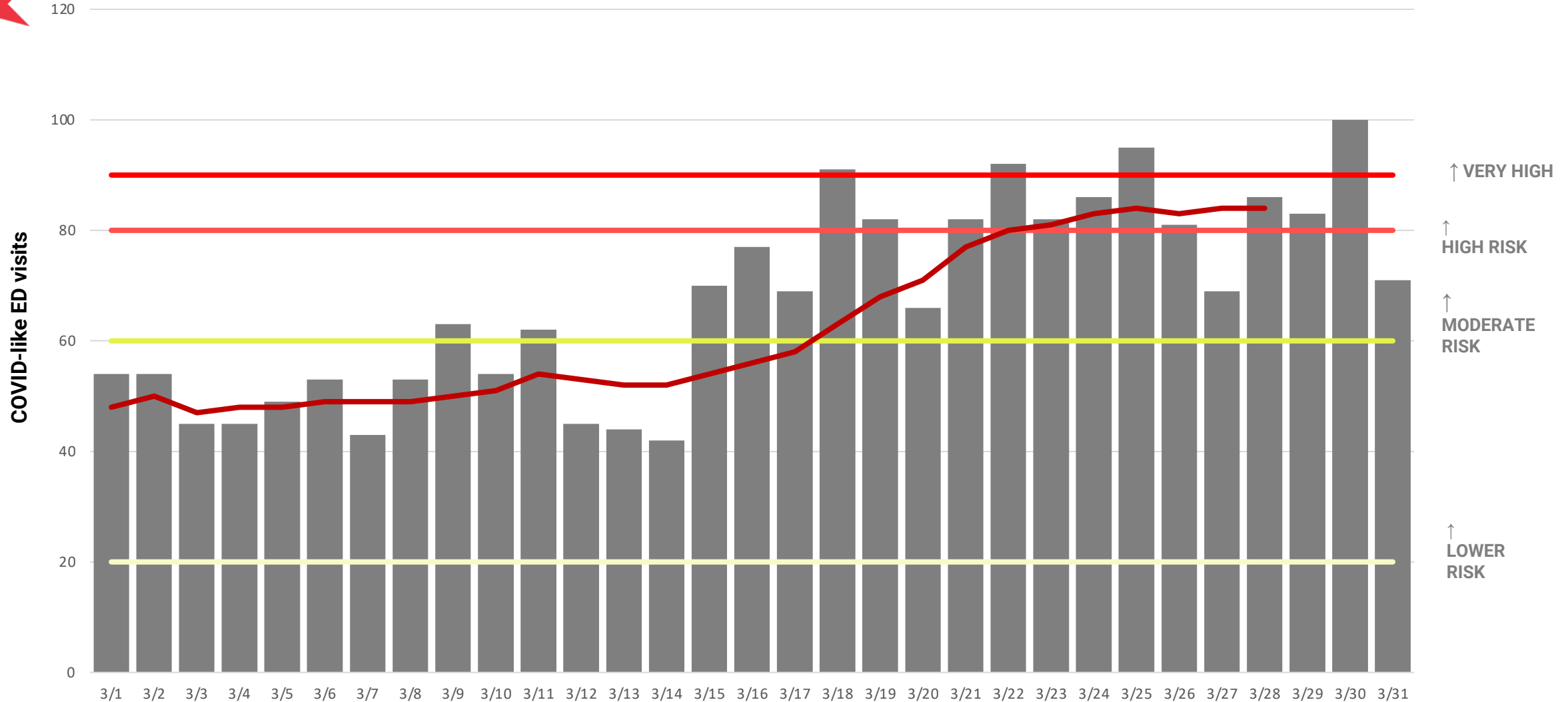


# Emergency Department Visits

# ED visit daily average has plateaued for past 8 days.

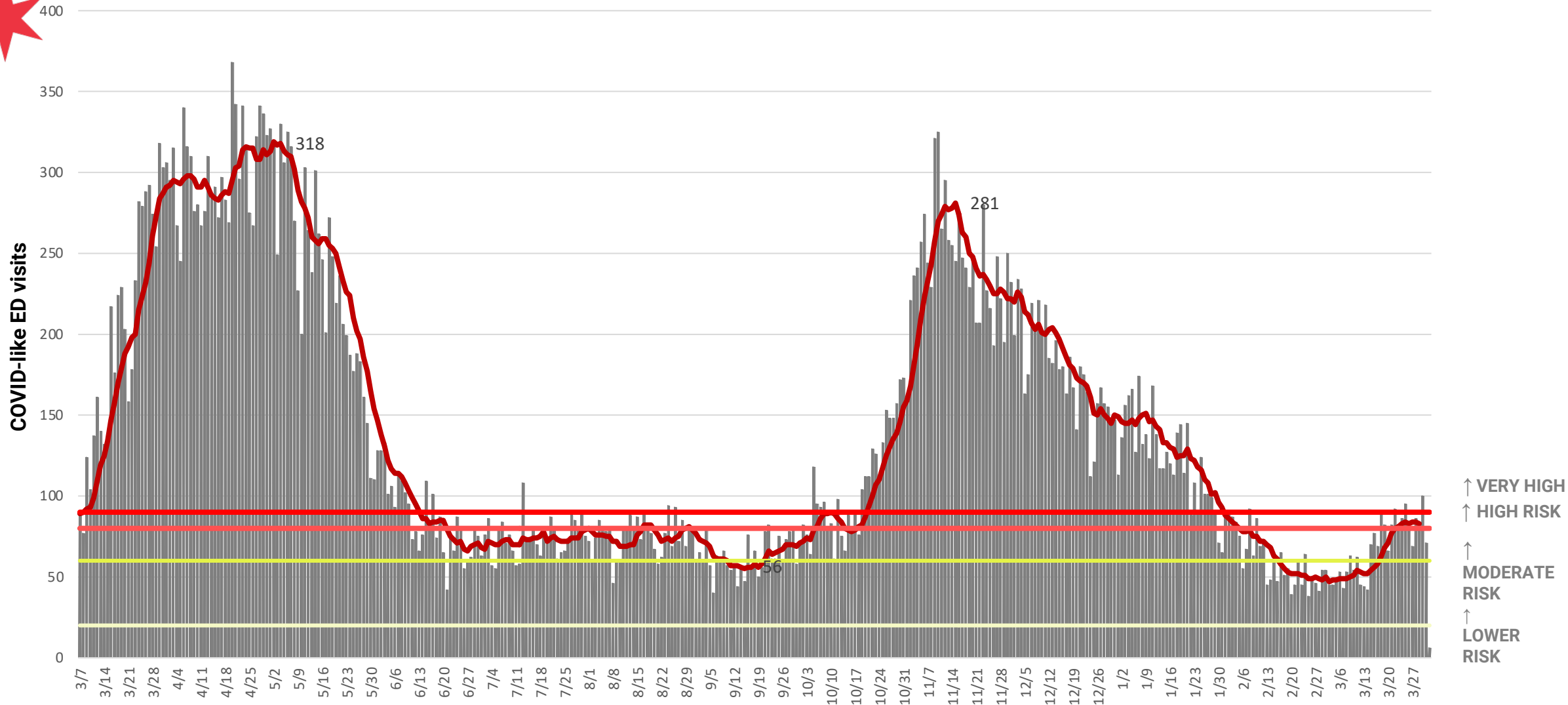


Date	CLI ED visit count, 7DRA	Consecutive days with 10%+ change	Consecutive days with 15%+ change	Risk level	# of days 10%+ in last week
4/2/2021	83	0	0	HIGH	0



Count of all emergency department visits reported with COVID-like symptoms among Chicago residents.  
 Data Source: Illinois Hospital Emergency Departments reporting to CDPH through the National Syndromic Surveillance Project.

# ED visits for COVID-like illness reached the highest peak in early May and is currently increasing.



Count of all emergency department visits reported with COVID-like symptoms among Chicago residents.  
Data Source: Illinois Hospital Emergency Departments reporting to CDPH through the National Syndromic Surveillance Project.



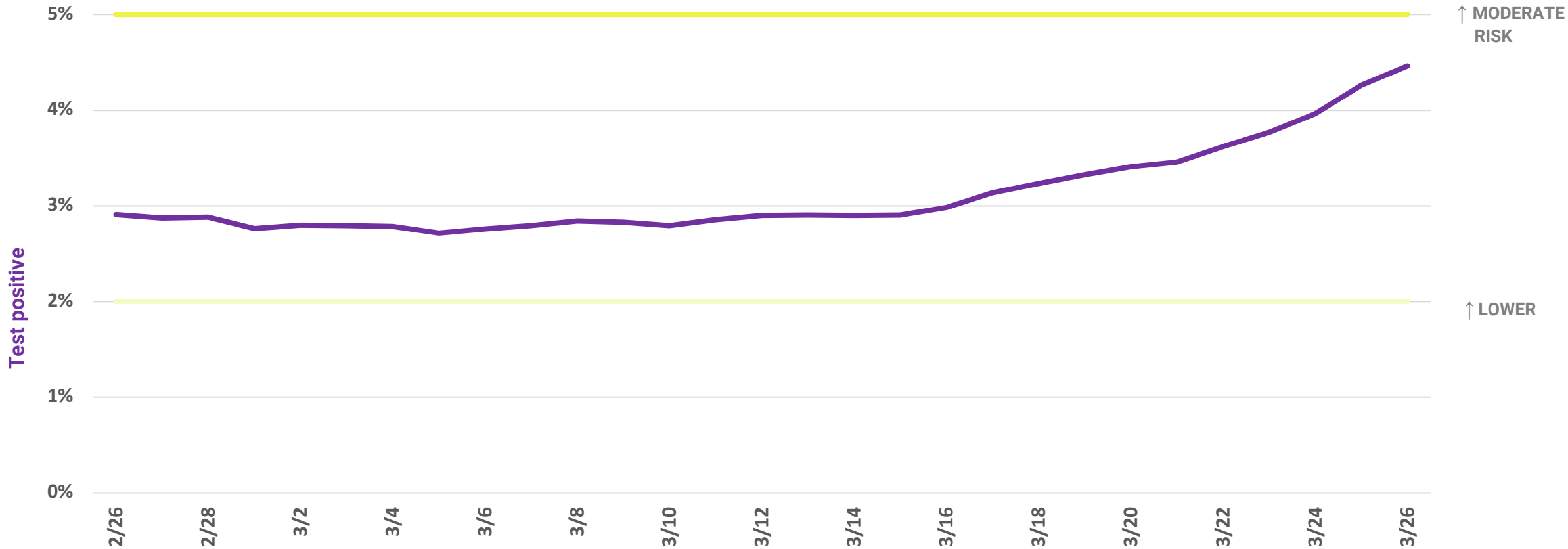
# Test Positivity

# Test positivity up 54% over past 14 days.

Reporting Date	Test Positivity, 7DRA	Consecutive days with 10%+ change	Consecutive days with 15%+ change	Risk level	# of days 10%+ in last week
4/2/2021	4.9%	13	10	VERY HIGH	7



COVID-19 tests, 7-day rolling average for test positive (%)

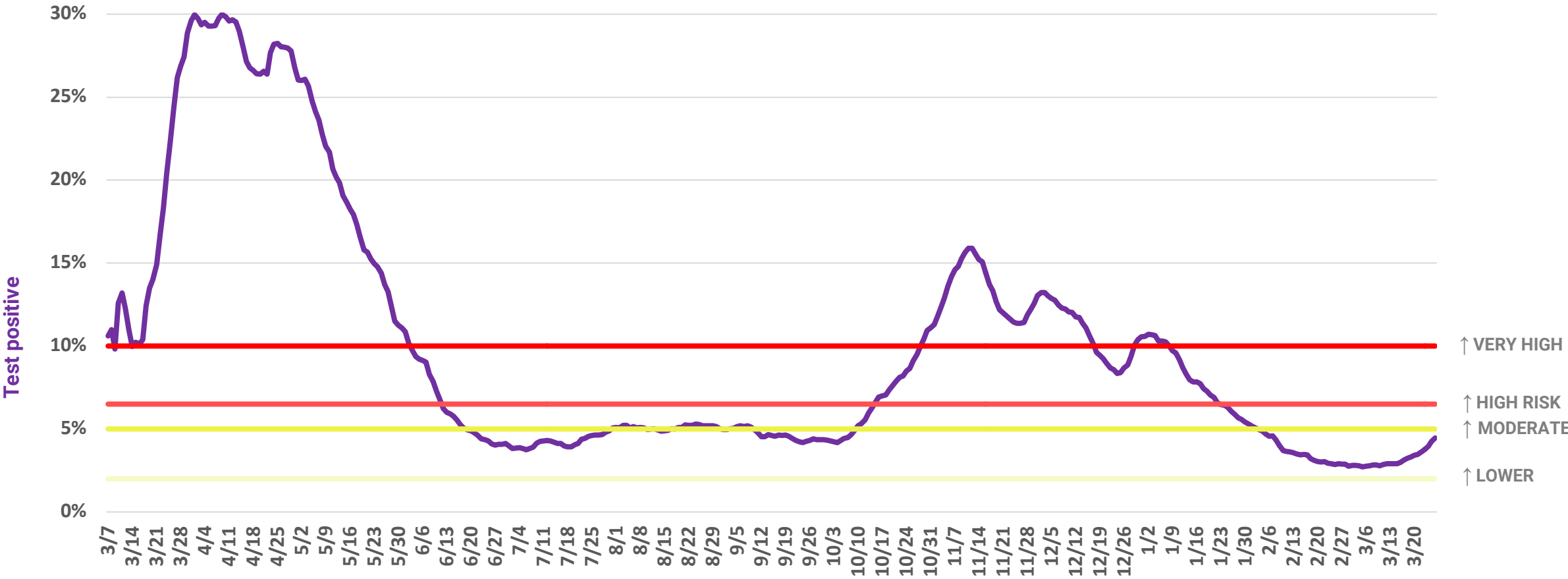


Test positivity is the number of positive tests divided by all tests performed. For the purposes of public reporting, the definition of 'tests' was expanded on 2/8/2021 to include antigen tests in addition to PCR tests. (Previous reports only described PCR tests). The new definition is applied to testing performed at any point during the epidemic. Source: INEDSS.

# Test positivity since beginning of epidemic.



COVID-19 tests, 7-day rolling average for test positive (%)



Test positivity is the number of positive tests divided by all tests performed. For the purposes of public reporting, the definition of ‘tests’ was expanded on 2/8/2021 to include antigen tests in addition to PCR tests. (Previous reports only described PCR tests). The new definition is applied to testing performed at any point during the epidemic. Source: INEDSS.



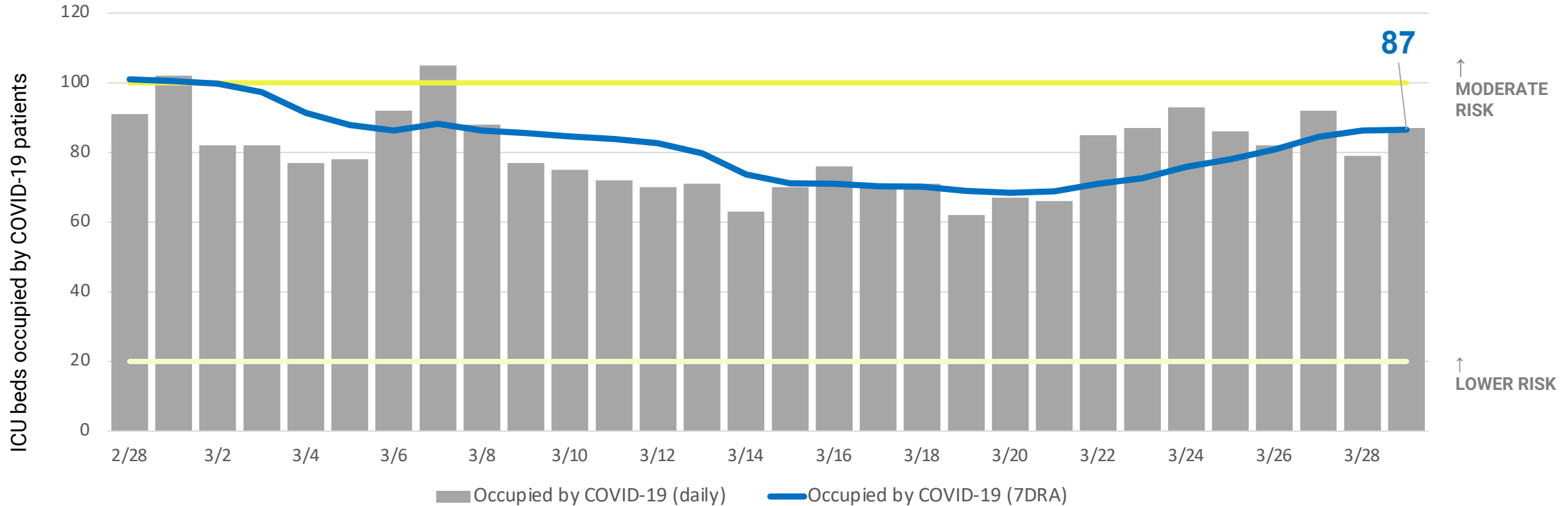
# Hospital System Capacity

# COVID-19 ICU bed occupancy up 23% over 14 days.

Reporting Date	ICU Beds Occupied by COVID-19, 7DRA	ICU Bed Availability, 7DRA	Risk level
4/2/2021	87	24%	LOWER



ICU beds occupied by COVID-19 patients, daily counts and 7 day average, daily occupancy census



Includes all Chicago hospitals. Hospitals report daily to CDPH via EMResource, beginning March 19. ICU bed count includes all adult and pediatric ICU beds in Chicago hospitals. Includes Chicago and non-Chicago residents. Includes confirmed and suspected COVID-19 cases.

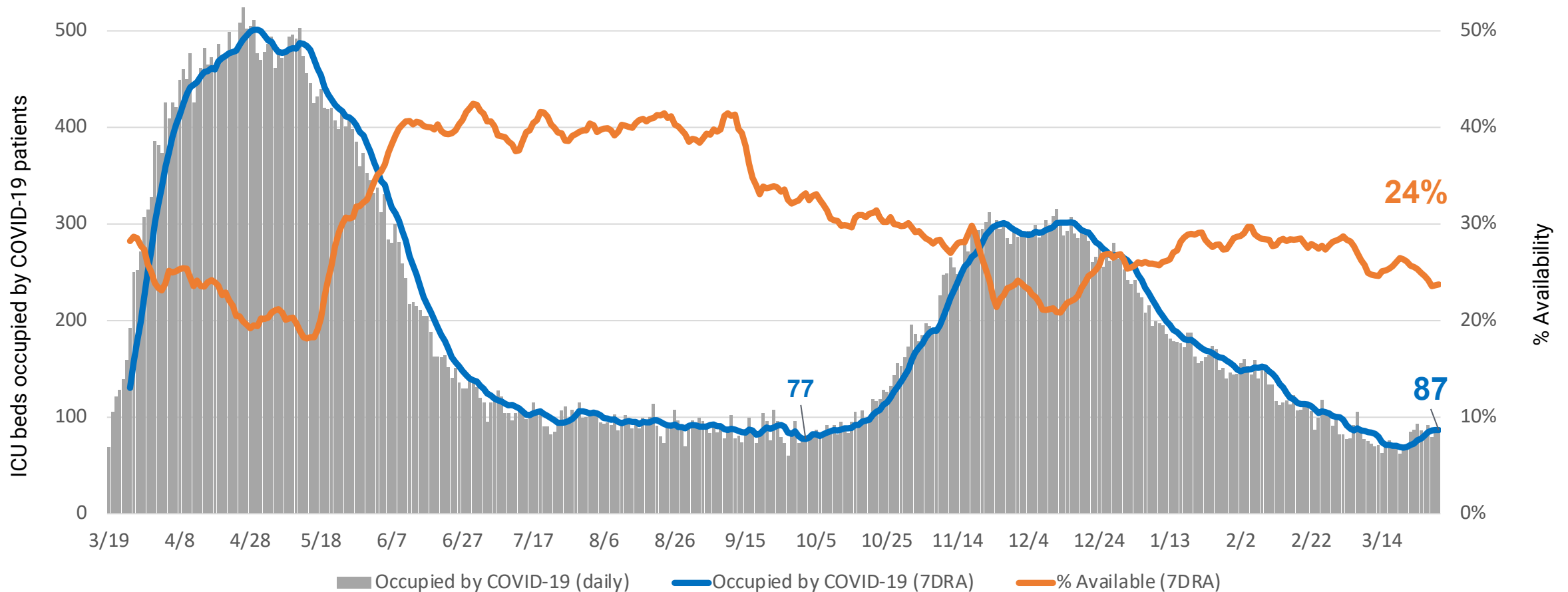


# ICU availability and occupancy from COVID-19 varies.

Reporting Date	ICU Beds Occupied by COVID-19, 7DRA	ICU Bed Availability, 7DRA	Risk level
4/2/2021	87	24%	LOWER



ICU beds available and occupied by COVID-19 patients, daily counts and 7 day average, daily occupancy census



Includes all Chicago hospitals. Hospitals report daily to CDPH via EMResource, beginning March 19. ICU bed count includes all adult and pediatric ICU beds in Chicago hospitals. Includes Chicago and non-Chicago residents. Includes confirmed and suspected COVID-19 cases.