



WESTERN AVENUE CORRIDOR STUDY

Public Event #2 South Sub Area | 07.22.2021

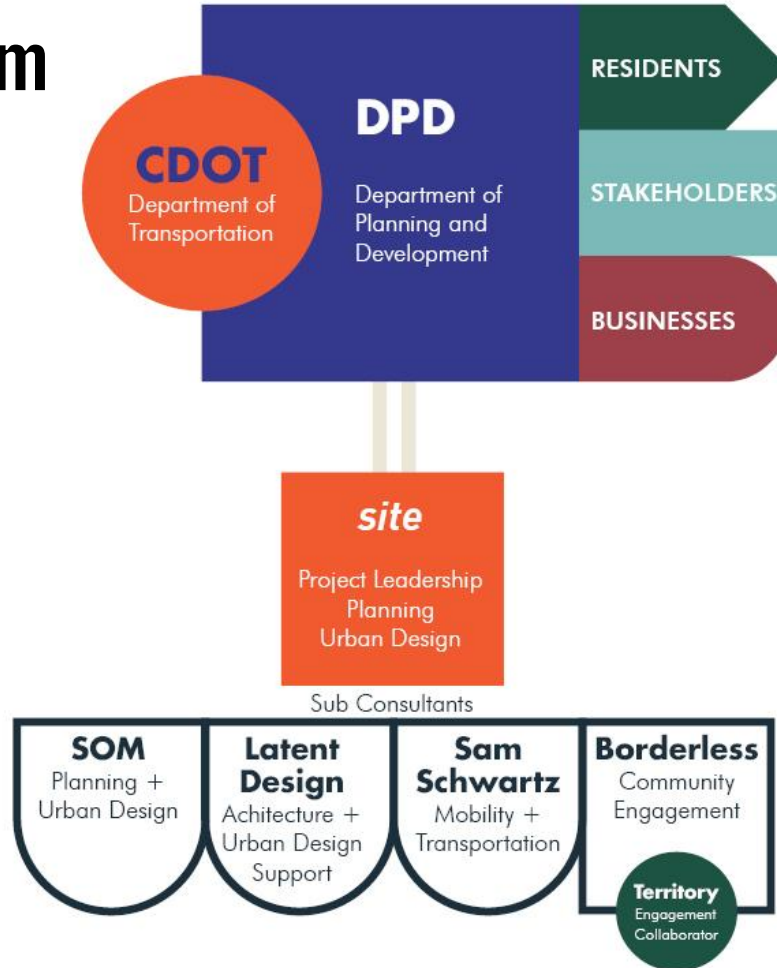
Meeting Goals

Inform and Listen

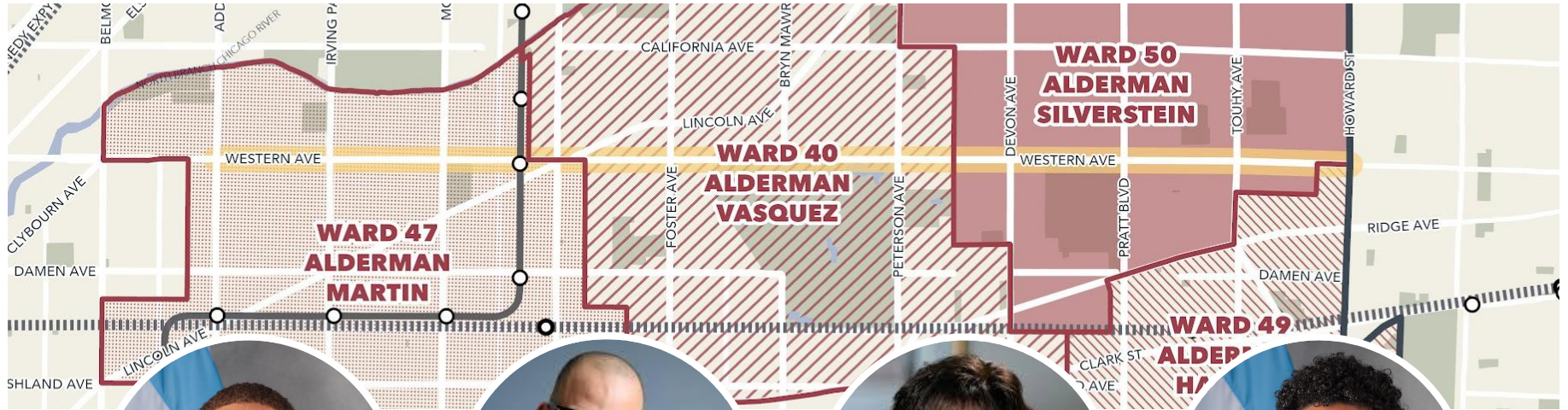
- Confirm **corridor planning principles** based on analysis findings and prior community feedback
- Discuss **potential strategies and desired long-term vision** for the corridor
- Share resources for **additional feedback opportunities**



The Planning Team



Aldermanic Partners



Alderman
Matt Martin
47th Ward



Alderman
Andre Vasquez
40th Ward

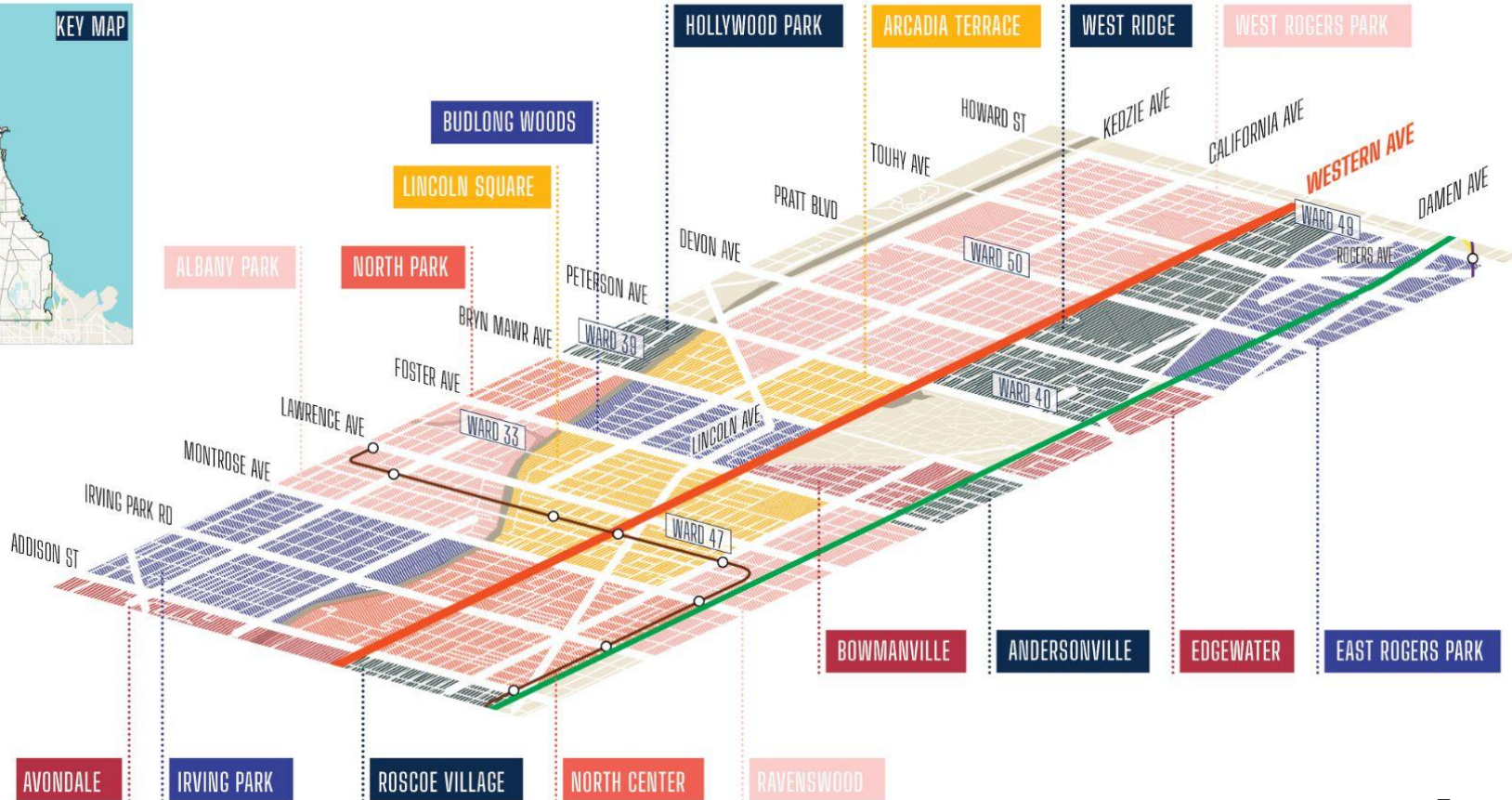
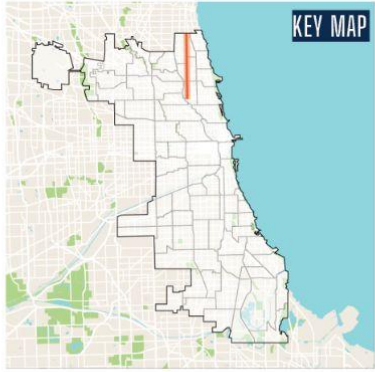


Alderman
Debra Silverstein
50th Ward



Alderman
Maria Hadden
49th Ward

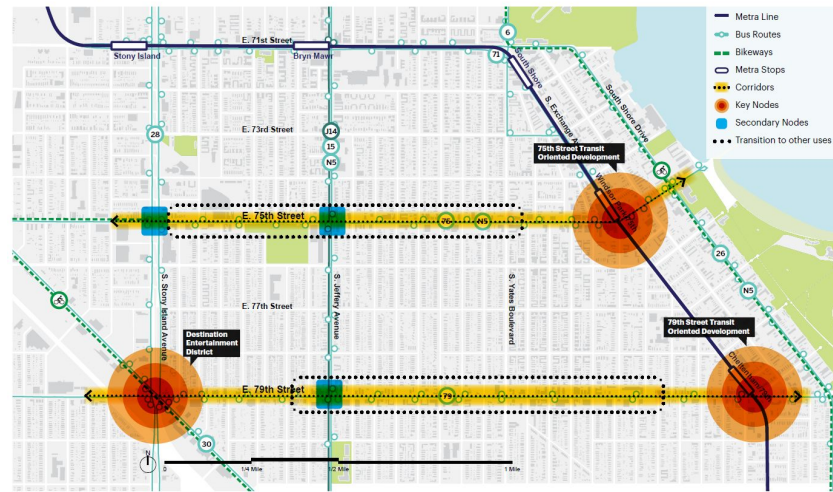
Corridor Study Area



Expected Study Deliverables

The final document will be a report that presents:

- + Long-term vision for the corridor that will include future land use, zoning, development, and infrastructure recommendations
 - + Opportunity sites for future development
 - + Public realm improvements
 - + Mobility improvements
- + Design guidelines along the corridor
- + Resource Reference Guide for stakeholders



SOUTH SHORE CORRIDOR PLAN | 33



03 Ideas for Action

Building Momentum in South Shore

South Shore is an established residential community with a strong basis to move forward, but also has some challenges that must be addressed. This chapter provides 10 Ideas for Action that aim to address these challenges and build on community strengths.

Positive change can be achieved on South Shore's corridor by leveraging local strengths, growing the capacity of local organizations, applying temporary public realm and tactical urbanism approaches in the near term and then advancing into longer-term capital and development projects. Promoting South Shore assets to future residents and businesses should continue throughout the process.

The goal is to achieve self-sustaining success, as determined by the community.

Building Local Partnerships
The Ideas for Action are also organized as a sequence of steps that can be implemented over time. In early stages there is a key role for the South Shore Chamber of Commerce as a leader, implementer and coordinator of others.

Raising Visibility
The opportunity and potential of South Shore can be promoted by joining the neighborhood effort. This plan can be used to communicate the market potential of South Shore to government, non-profit leaders, foundations and the private sector right away.

Building City-Wide Partnerships
Partnerships with city-wide territorial assistance providers and non-profit housing and mixed-use development funders can be established and capacity building for existing in-neighborhood South Shore organizations to join the plan. This will provide the foundation for later interventions in building innovation and job development.

Democratizing Change on the Ground
In parallel, small-scale and temporary public realm and tactical urbanism site interventions will engage the community, signal physical change and raise the quality of place for residents.

© 2020 South Shore Corridor Study

Three Principles for Corridor Futures

This plan offers three themes which will organize partners and provide new learning and sequencing of activity over time.

Advance Community Led Initiatives
Near-term activities can create visible change, using local and city knowledge, skills and resources among non-profit partners.

Improve Public Spaces and Transit Facilities
Medium-term investments, to build up the scale of visible change as encouraging more people to walk, bike and use transit to experience neighborhood.

Steer Investment and Development
Incentive investment to the place it has best chance of success and meet community needs.

Other City Resources

The Department of Planning and Development has several resource programs that can provide support to several of the Ideas for Action implementation steps outlined in this document, including tax increment financing, Neighborhood Opportunity Fund, Near Transit, Tax Credit and Clerk (7a) and (7b) tax incentives, among others. Portions of 7a and 7b Street also has street-census tracts that are eligible for the federal Opportunity Zones program and other incentive zones, including Employment Zone and Enterprise Zone. More information can be found at www.chicago.gov/id/.

In addition to resources and programs administered by DPD, several partner agencies and city departments, including BACP, CDDT and CDAGE, have resources and programs that can be leveraged to address several of the Ideas for Action outlined here.

Western Avenue Corridor Study Process

2020

2021

dec jan/feb mar/apr may/jun jul/aug sept/oct nov/dec

Community Engagement:

Awareness, Outreach, Input & Feedback

Community Surveys
(2 total)

Public Events
(3 total)

Phase 1:

Review and Analysis

Phase 2:

Principles, Strategies, and Concepts

Phase 3:

Refinement and Documentation

We are here

Engagement Overview

WORKING GROUPS

2 **STEERING COMMITTEE MEETINGS**
JANUARY & JULY



6 **FOCUS GROUPS SESSIONS**
MARCH



3 **YOUTH COUNCIL MEETINGS**
JANUARY-APRIL



PUBLIC EVENTS

1 **PUBLIC VIRTUAL EVENT KICK-OFF**
JANUARY



+250 Direct participants via zoom

+600 Views via YouTube

1 **YOUTH-LED POP-UP EVENT**
Northtown Library
MAY



OUTREACH + COMMUNICATIONS

+15,000 POSTCARDS MAILED 

 **+20** BUS STOP ADS
400 INTERIOR BUS ADS

+1,500 ONLINE SURVEY RESPONSES 

 **+40** BUSINESSES INTERVIEWS

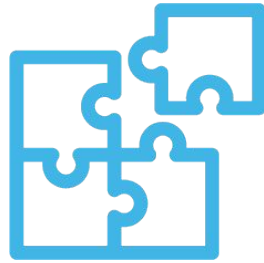
+1,300 FLYERS POSTED 

 **WEBSITE + SOCIAL MEDIA**

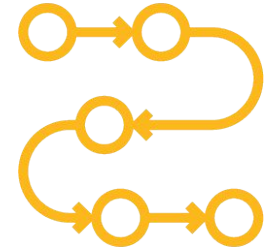
Participation Principles: The Corridor



We will **envision the long-term future** grounded in data-driven and feasible strategies.

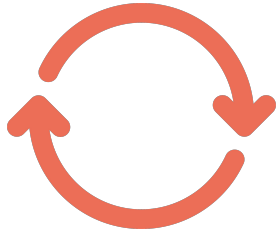


We will create a **collective vision** for Western Avenue that acknowledges the **diverse conditions** of the entire five-mile corridor from Addison to Howard.

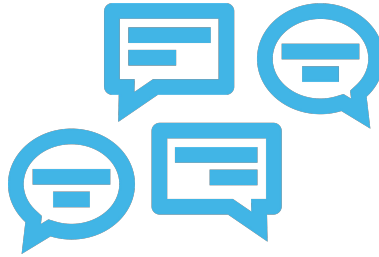


We will develop a **cohesive long-term roadmap** that is the first of many steps toward change. Implementation will entail future projects with their own processes.

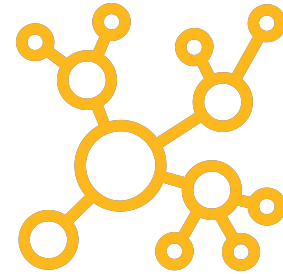
Participation Principles: The Conversation



We will be **transparent** by sharing relevant information, ideas, and concerns with one another.



We will seek **inclusion** by **listening to as many voices as possible** while embracing productive tensions and respectful disagreements.



We will **communicate in good faith**, in a spirit of collaboration and mutual respect.

Planning Themes

1

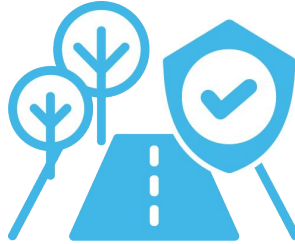
Thriving Places



- + **Land Use**
- + **Economic Development**
- + **Development**
(New Construction/Renovation/Re-use of Housing/Commercial/Mixed-Use Buildings, Urban Design, etc.)

2

Safe & Attractive Streets



- + **Transportation and Mobility**
- + **Public Space**
(Streets, Sidewalks, Plazas, etc.)
- + **Placemaking & Identity**

3

Resilient & Sustainable Corridor



- + **Climate Change Resilience**
- + **Long-term Sustainability**
(Stormwater Management, Urban Heat Island, Tree Canopy Health, Urban Wildlife, etc.)



Thriving Places

- + **Land Use**
- + **Economic Development**
- + **Development**

(New Construction/Renovation/Re-use of Housing/Commercial/Mixed-Use Buildings, Urban Design, etc.)



Center on Halsted, Chicago



THRIVING PLACES

KEY FINDINGS

Vibrant Neighborhoods

Diverse Destinations

Corridor Opportunities

Vibrant Neighborhoods

"The Lincoln, Lawrence, Western intersection would benefit from a commercial cluster development"



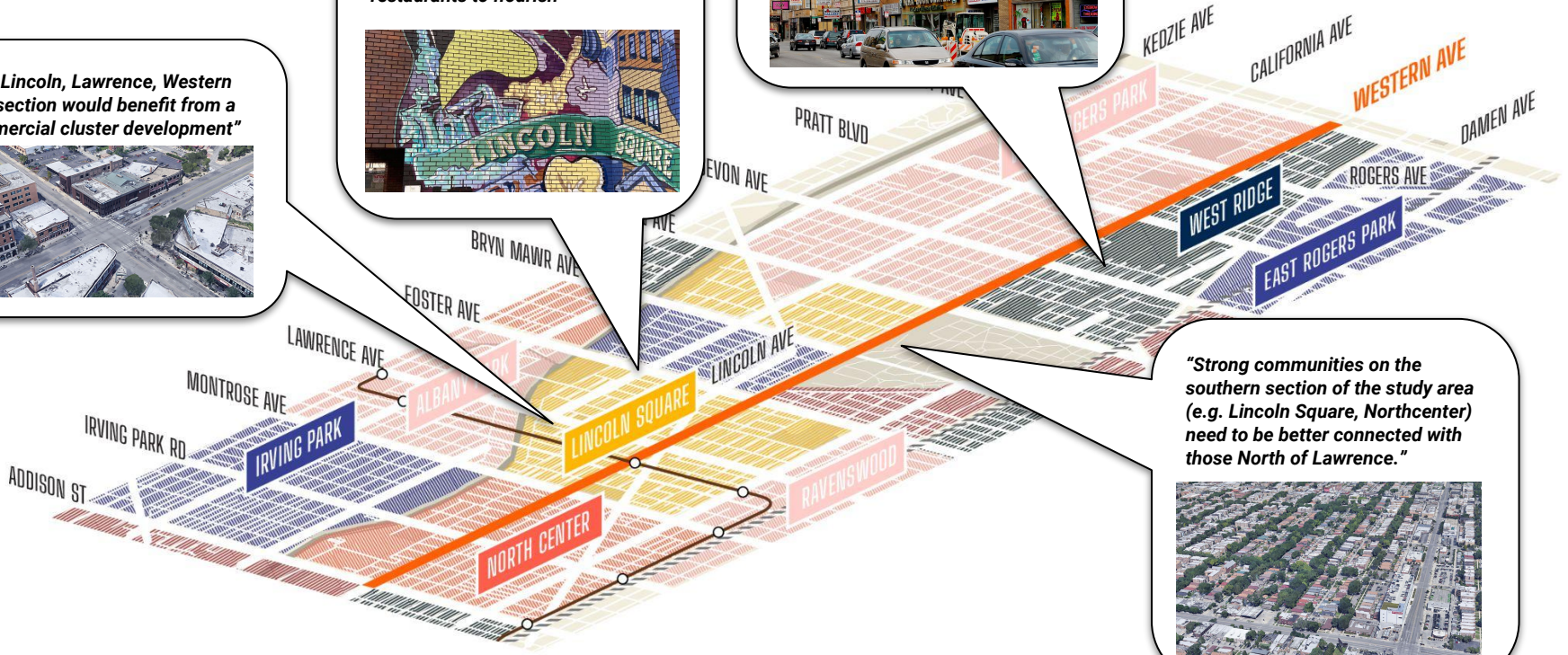
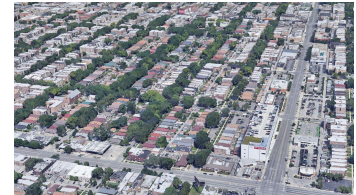
"Hope the heritage, history, and architecture of Lincoln Square can continue to be preserved [...] and encourage more businesses, bars, restaurants to flourish"



"Make West Ridge livable without the need for a car: better transit, bike lanes, grocery and service access, affordable housing"



"Strong communities on the southern section of the study area (e.g. Lincoln Square, Northcenter) need to be better connected with those North of Lawrence."



Diverse Destinations

"There are many points along the way that could become destination nodes as well as commercial centers to help create 15 minute cities within the City."



"Devon & Western has great evening energy, with families out walking together after dinner"

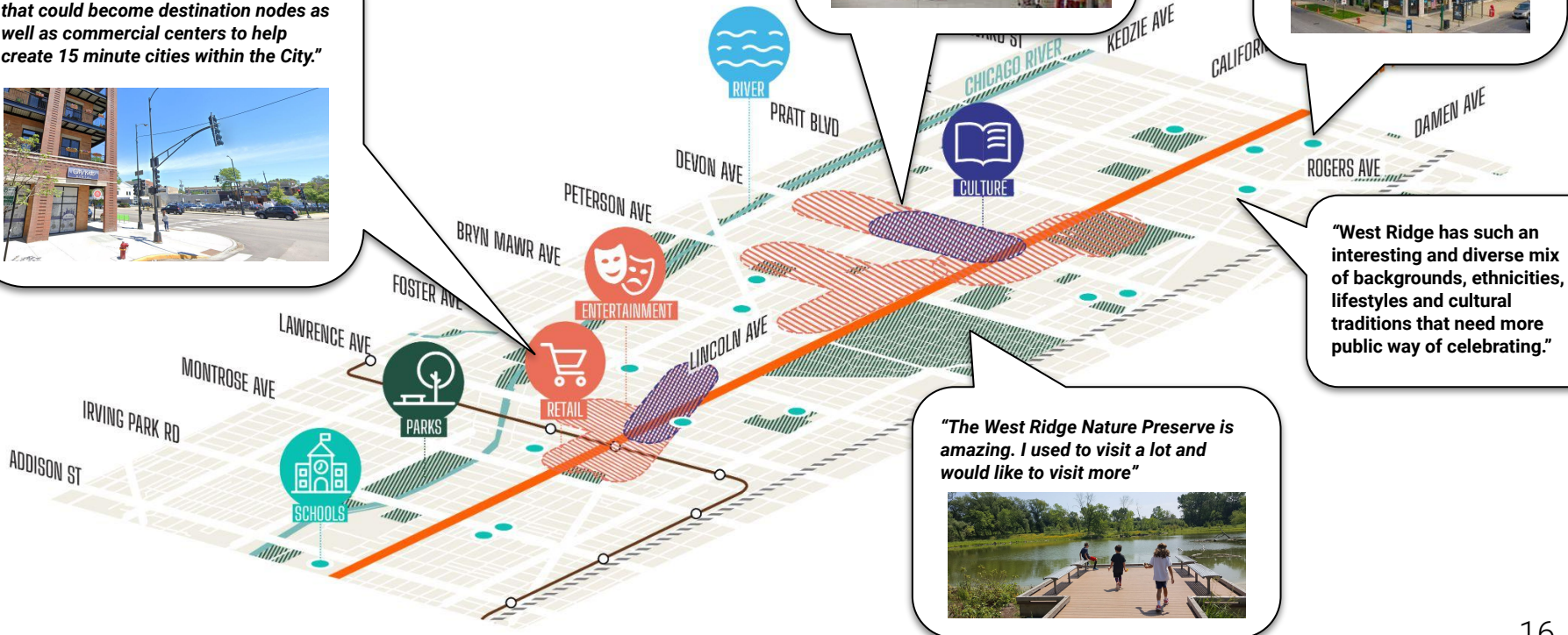


"Thoughtfully use what's already there to create a vibrant arts and culture corridor akin to what Rogers Park has historically been."



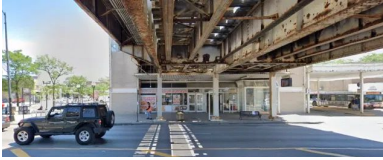
"West Ridge has such an interesting and diverse mix of backgrounds, ethnicities, lifestyles and cultural traditions that need more public way of celebrating."

"The West Ridge Nature Preserve is amazing. I used to visit a lot and would like to visit more"



Corridor Opportunities

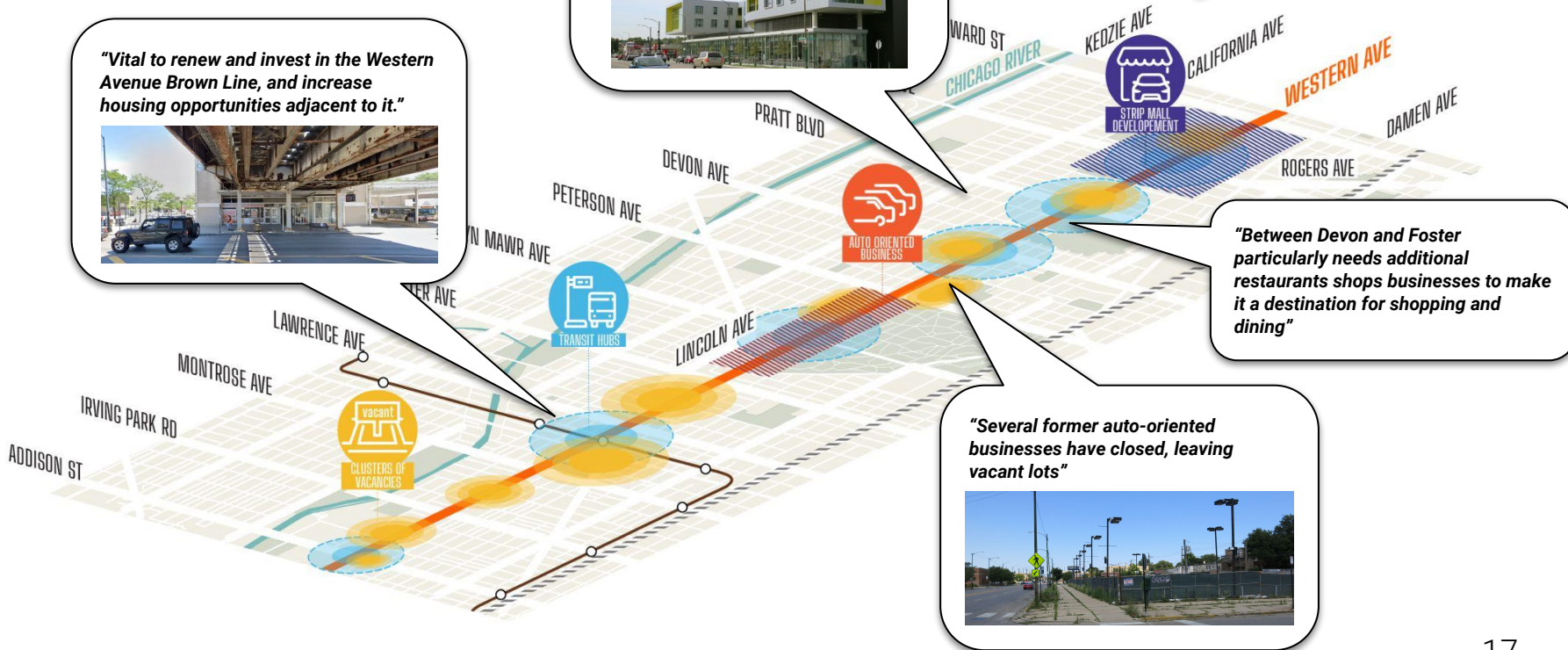
"Vital to renew and invest in the Western Avenue Brown Line, and increase housing opportunities adjacent to it."



"I'd love to see more efforts to make this stretch of Western more encouraging of real diversity, with more affordable housing options and more businesses run by BIPOC and other under-represented groups."



"Western Avenue ranges from "welcoming" to daunting. Making more areas "welcoming" without losing the variety would be key."



"Between Devon and Foster particularly needs additional restaurants shops businesses to make it a destination for shopping and dining"

"Several former auto-oriented businesses have closed, leaving vacant lots"



THRIVING PLACES

PRINCIPLES





Celebrate and Enhance the Corridor's Unique Assets

- Use art and branding similar to other successful places as Lincoln Square, Devon, and Ainslie Arts Plaza
- Support a localized and diverse economy
- Emphasize Cultural Heritage Districts





Concentrate Development into Vibrant Mixed-Use Hubs

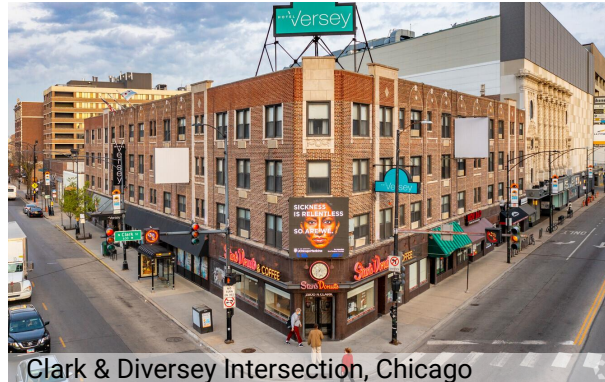
- Steer mixed-use development to transit-rich, locations with strong local residential customer bases.
- Include housing, retail, business and community services and culture..



The Galvin TOD, Rockville Maryland



Cottage Grove Corridor, Bronzeville



Clark & Diversey Intersection, Chicago



Retail mixed use, Wicker Park, Chicago



Encourage New Housing Along the Corridor Between Mixed-Use Hubs

- Encourage residential development at opportunity sites between Mixed-Use hubs..
- Encourage residential use on all floors, including the ground floor.
- Provide housing that meets a range of community needs.



Buena Park, Chicago



Condominium building by SGW, Chicago



Residential Development, Western Ave

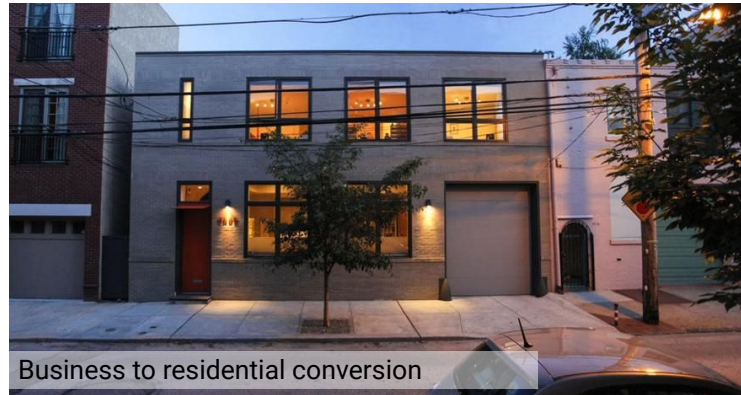


Residential Development, Western Ave



Encourage Building Re-use for Housing along the Corridor Between Mixed-Use Hubs

- Encourage residential re-use of vacant retail and commercial buildings.





Safe & Attractive Streets

- + **Transportation and Mobility**
- + **Public Space**
(Streets, Sidewalks, Plazas, etc.)
- + **Placemaking & Identity**



Fullerton Ave, Chicago



SAFE & ATTRACTIVE STREETS

KEY FINDINGS

Principal Arterial

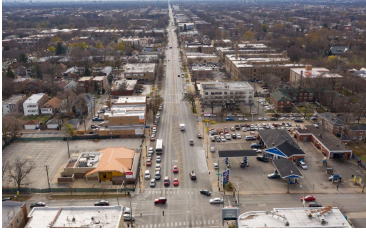
Bike + Pedestrian Safety

Public Realm



Principal Arterial

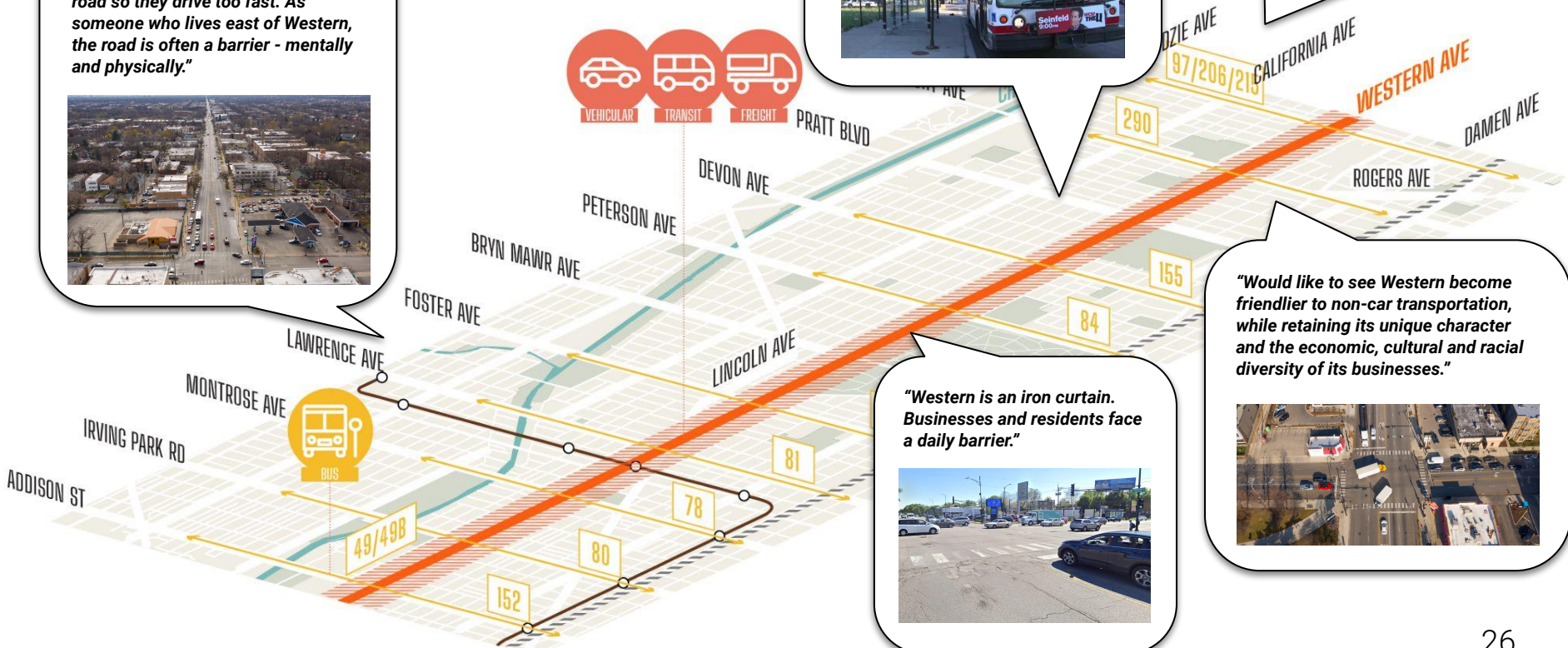
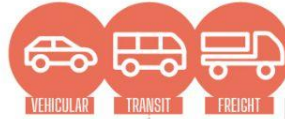
"In general, Western is too wide and cars have too much space on the road so they drive too fast. As someone who lives east of Western, the road is often a barrier - mentally and physically."



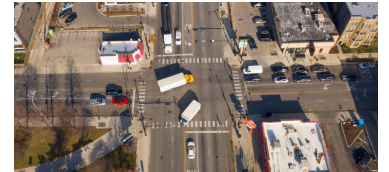
"The lack of dedicated transit lanes/infrastructure is a major impediment to better mobility along Western Ave."



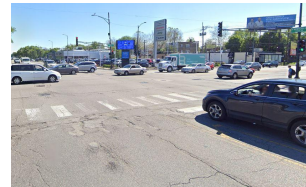
"Maintain connecting function and traffic movements as a major road while improving its pedestrian experience"



"Would like to see Western become friendlier to non-car transportation, while retaining its unique character and the economic, cultural and racial diversity of its businesses."



"Western is an iron curtain. Businesses and residents face a daily barrier."

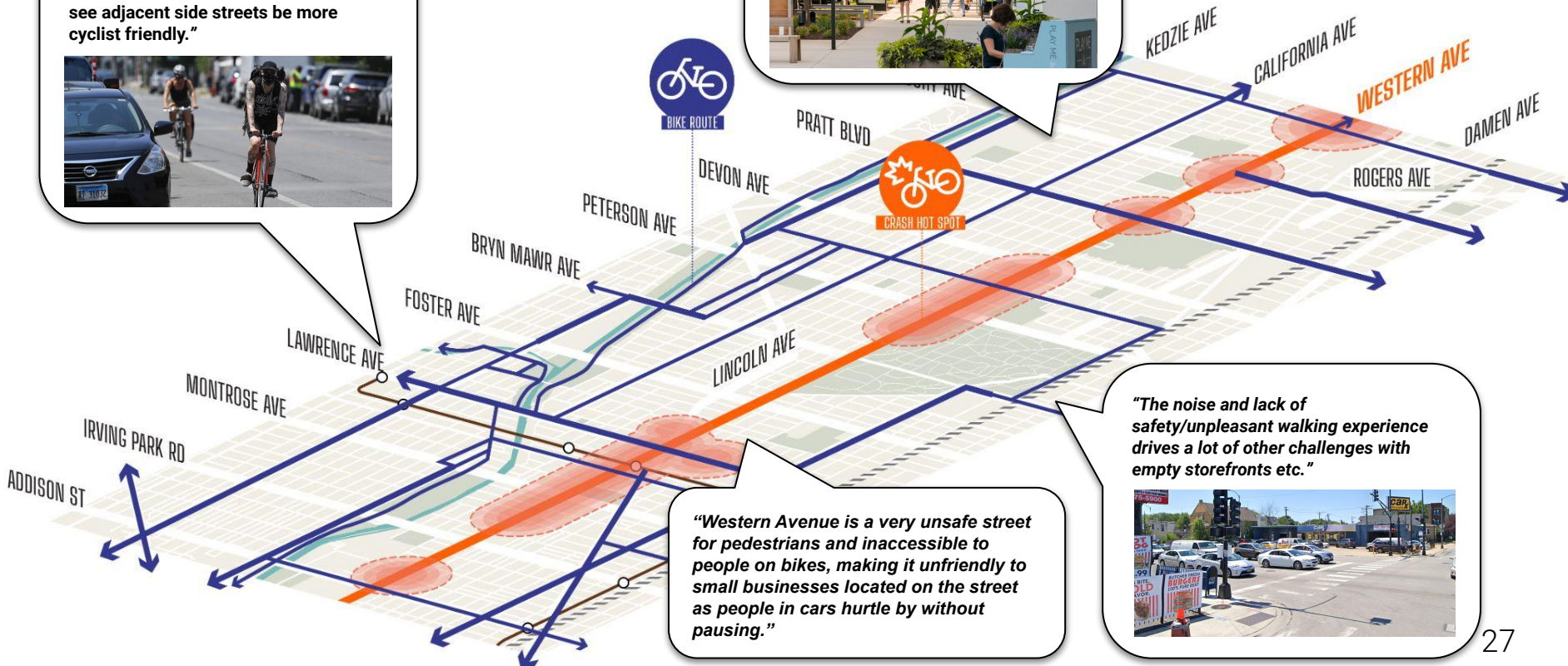


Bike + Pedestrian Safety

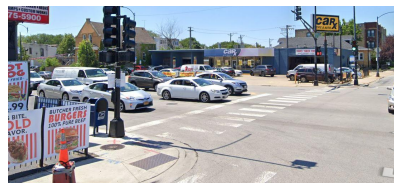
"We need to de-prioritize auto throughput and speeds and prioritize transit, walking, and biking."



"I am cyclist but realize that Western Ave is NOT a safe street. Would like to see adjacent side streets be more cyclist friendly."



"The noise and lack of safety/unpleasant walking experience drives a lot of other challenges with empty storefronts etc."



"Western Avenue is a very unsafe street for pedestrians and inaccessible to people on bikes, making it unfriendly to small businesses located on the street as people in cars hurtle by without pausing."

Public Realm

"Sidewalks could be widened for more outdoor dining & create a street design to be comfortable to walk along."



"More green spaces, more trees, more commuter friendly [...] Help more restaurants and local businesses come into storefronts."



"We have world class parks on either side of Western, but very little accommodation for crossing Western"



"Western itself has very little character, but there are so many great places just off Western, i.e. the old Germantown on Lincoln, Devon Avenue, and green spaces like Welles Park and Rosehill Cemetery/Nature Preserve."





SAFE & ATTRACTIVE STREETS

PRINCIPLES





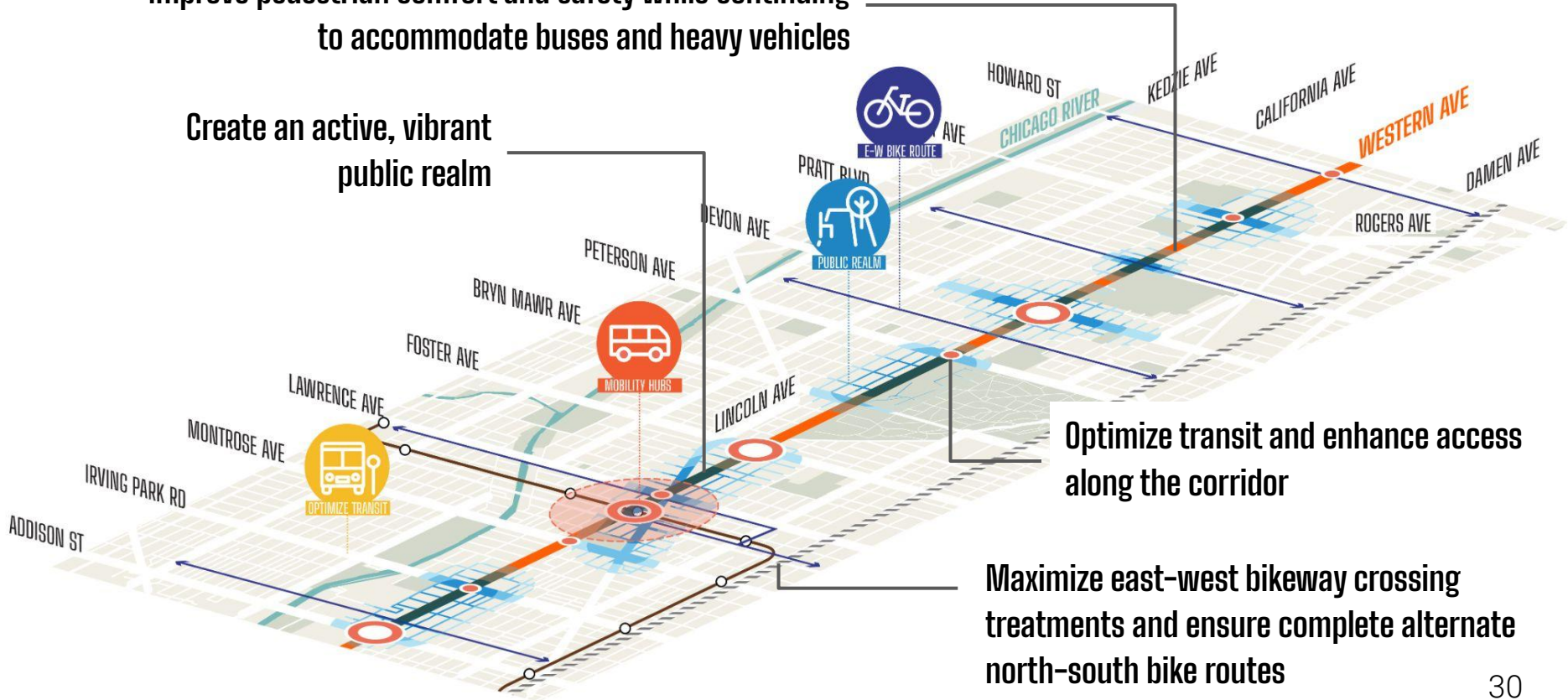
Safe and Attractive Streets : Principles

Improve pedestrian comfort and safety while continuing to accommodate buses and heavy vehicles

Create an active, vibrant public realm

Optimize transit and enhance access along the corridor

Maximize east-west bikeway crossing treatments and ensure complete alternate north-south bike routes





Improve Pedestrian Comfort and Safety While Continuing to Accommodate Buses and Heavy Vehicles

- Target key intersections pedestrian safety enhancements.
- Adjust roadway geometry in strategic locations to prioritize pedestrians and transit.
- Design streetscape for flexibility and adaptability, allowing for the interchange of parking, transit, and traffic uses where necessary.
- Invest in streetscape improvements



Curb Bump Out, Chicago



Lakeview Lincoln Hub, Chicago



Rectangular Rapid Flashing Beacon, Monroe St



Pedestrian Refuge Island, Lawrence Ave



Create an Active, Vibrant Public Realm

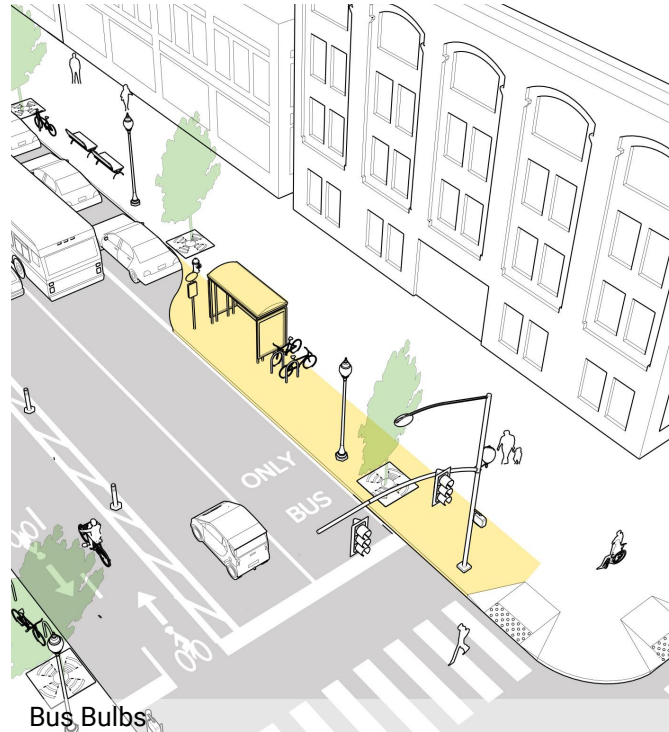
- Create signature public spaces at primary intersections on East/West streets
- Increase sidewalk / public realm at key mixed-use intersections
- Create a greener, more welcoming people-space streetscape
- Include more active programming throughout the corridor.
- Identify short term (tactical urbanism) and long term (permanent strategies)
- Encourage strategic and minimal building setbacks
- Incentivize the renovation of aging ground-floor storefronts.



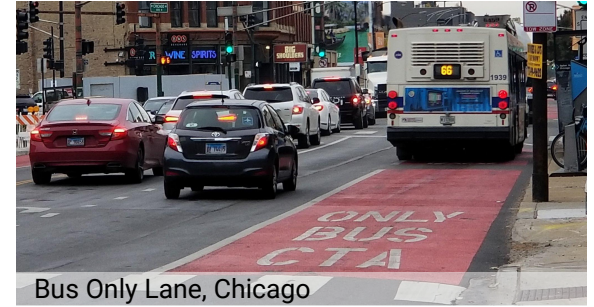


Optimize Transit and Enhance Access Along the Corridor

- Evaluate cross-section for opportunities to enhance transit
- Strategically place dedicated drop-off/pick-up and delivery loading zones.
- Peak-hour parking restrictions at select locations



Bus Bulbs



Bus Only Lane, Chicago



Bus Stop Bulb, Chicago



Maximize East-West Bikeway Crossing Treatments and Ensure Complete Alternate North-South Bike Routes

- Emphasize east-west neighborhood bike route crossings.
- Increase connectivity between Western Ave and the riverfront.
- Ensure complete alternate North-South Bike Routes



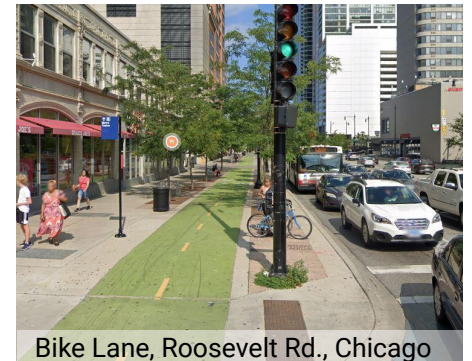
55th St Bike Lane, Chicago



Bicycle Wayfinding Signage, The 606, Chicago



Branded Bicycle Racks, Chicago



Bike Lane, Roosevelt Rd., Chicago



Resilient & Sustainable Corridor

- + **Climate Change Resilience**
- + **Long-term Sustainability**
(Stormwater Management, Urban Heat Island, Tree Canopy Health, Urban Wildlife, etc.)



North Avenue, Chicago



Resilient & Sustainable Corridor

KEY FINDINGS

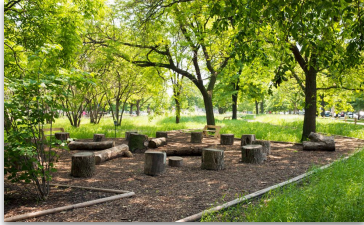
Urban Tree Canopy

Stormwater

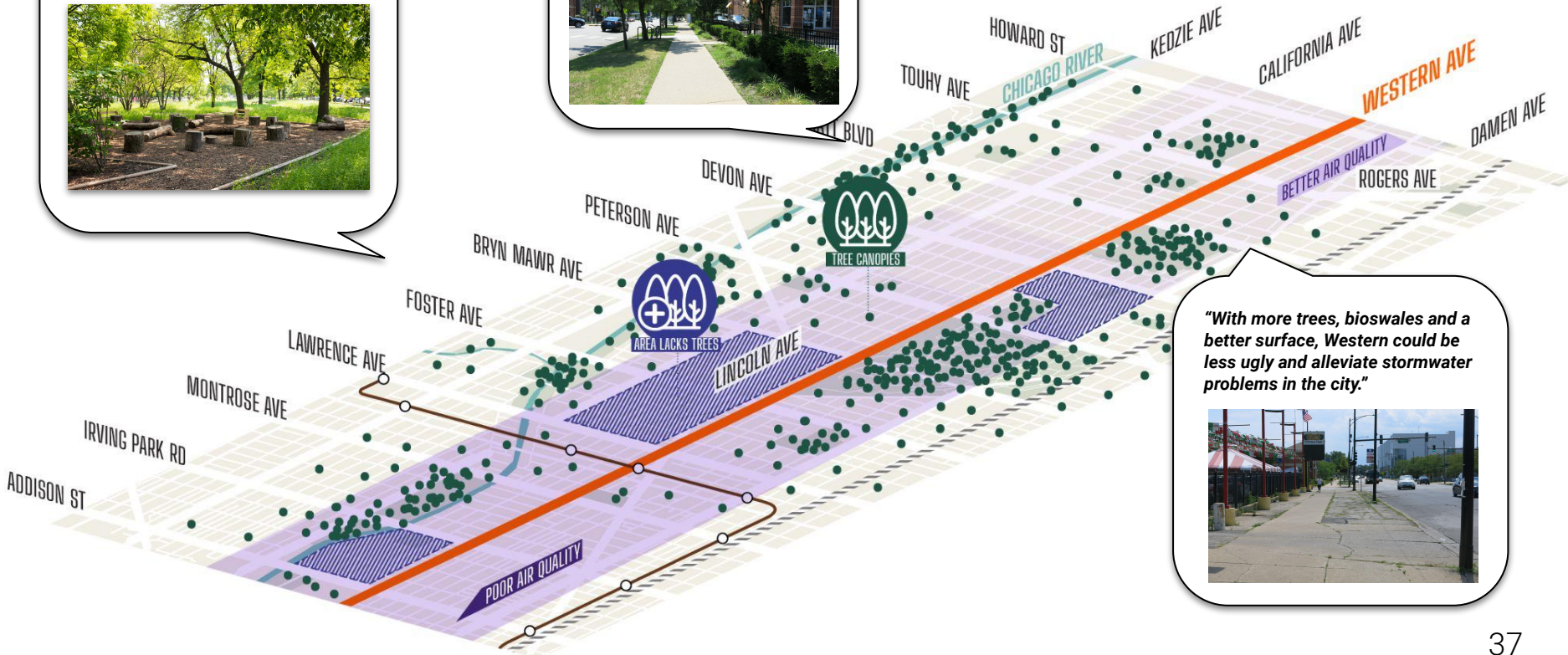
Urban Heat Island

Urban Tree Canopy

"Look to other streets and green clusters to connect to."



"More median green spaces with trees and plants that will grow and provide a canopy in decades to come."



"With more trees, bioswales and a better surface, Western could be less ugly and alleviate stormwater problems in the city."

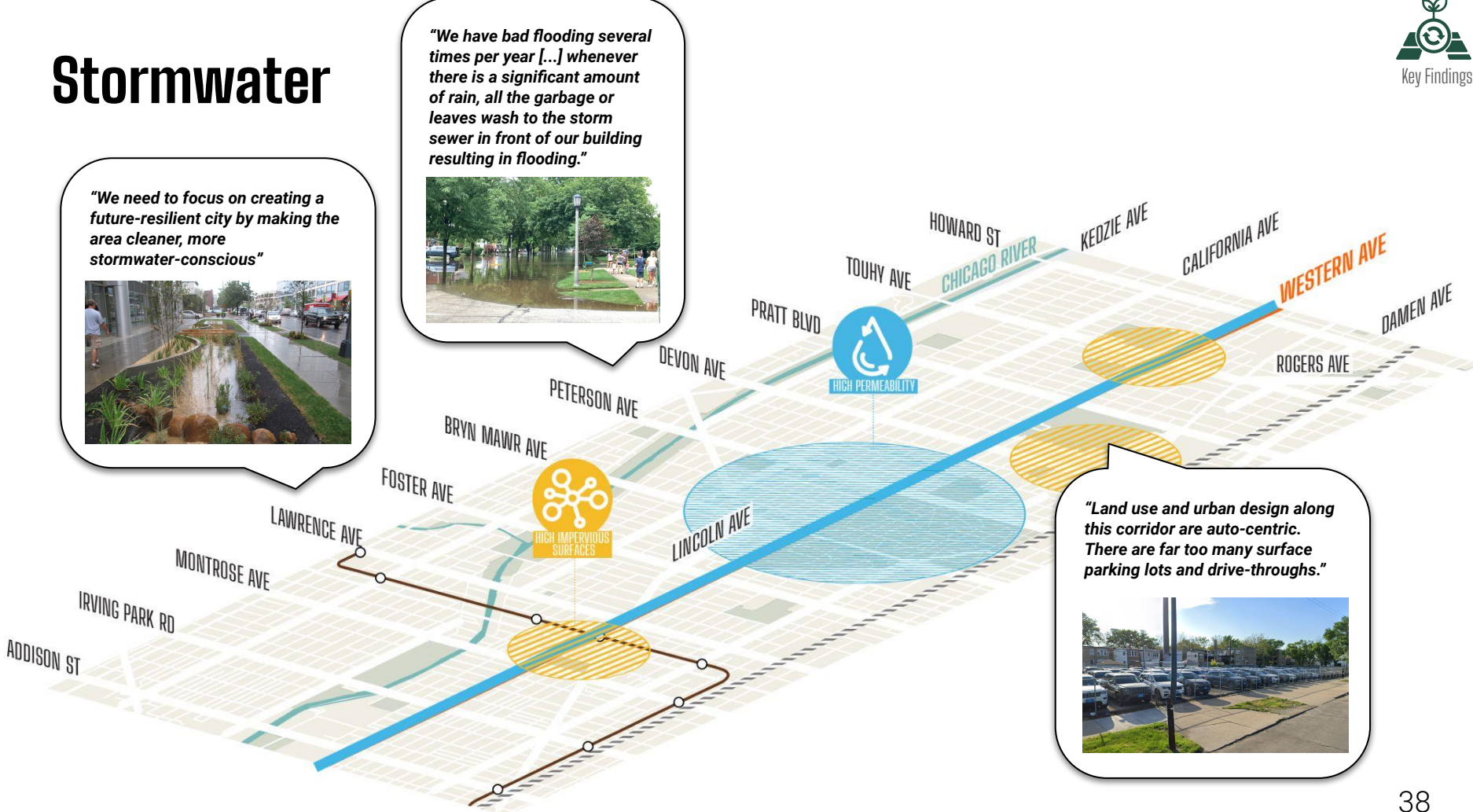


Stormwater

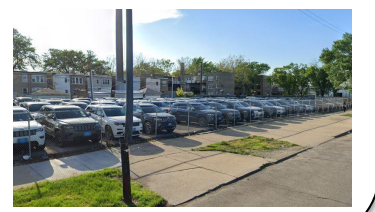
"We need to focus on creating a future-resilient city by making the area cleaner, more stormwater-conscious"



"We have had flooding several times per year [...] whenever there is a significant amount of rain, all the garbage or leaves wash to the storm sewer in front of our building resulting in flooding."



"Land use and urban design along this corridor are auto-centric. There are far too many surface parking lots and drive-throughs."

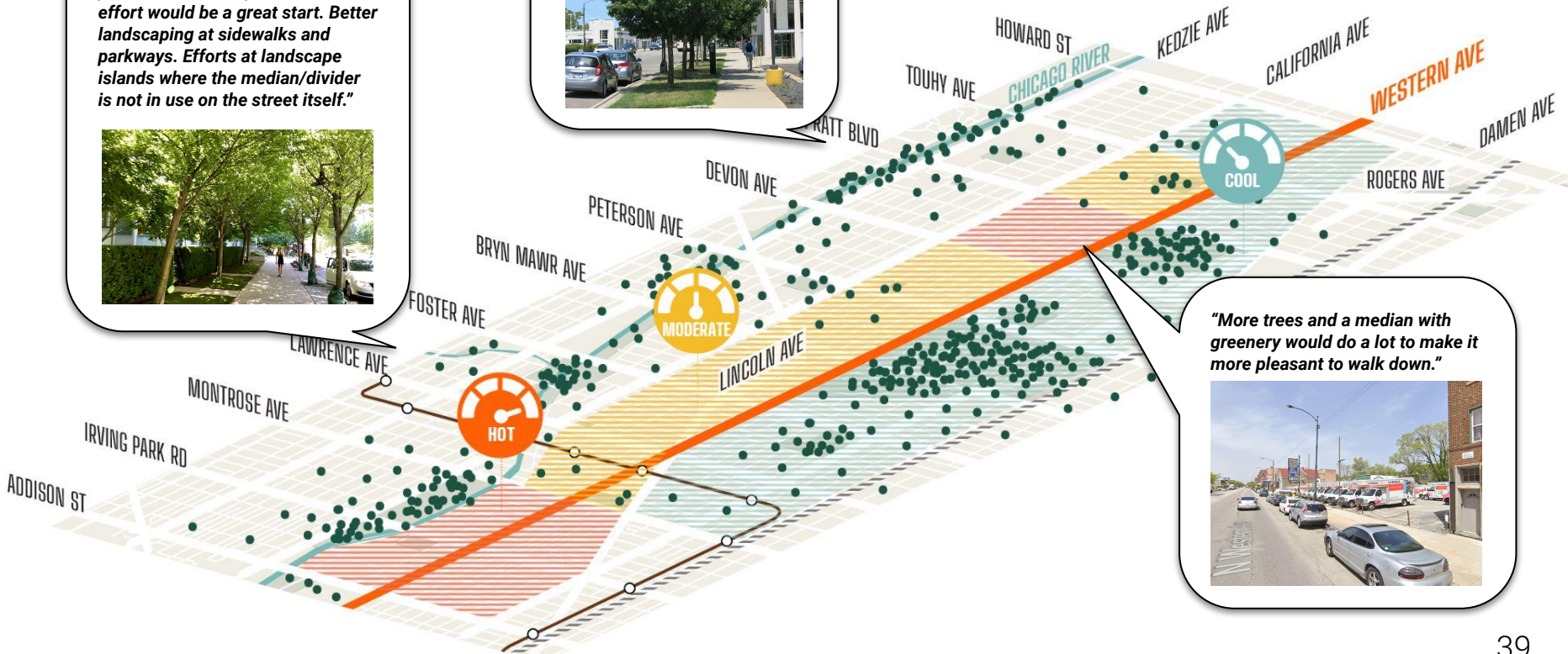


Urban Heat Island

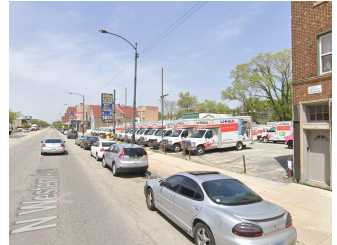
"A massive landscaping and pedestrian area improvement effort would be a great start. Better landscaping at sidewalks and parkways. Efforts at landscape islands where the median/divider is not in use on the street itself."



"Make it nice for people. Tall leafy trees to break the sun and muffle the noise."



"More trees and a median with greenery would do a lot to make it more pleasant to walk down."





Resilient & Sustainable Corridor

PRINCIPLES



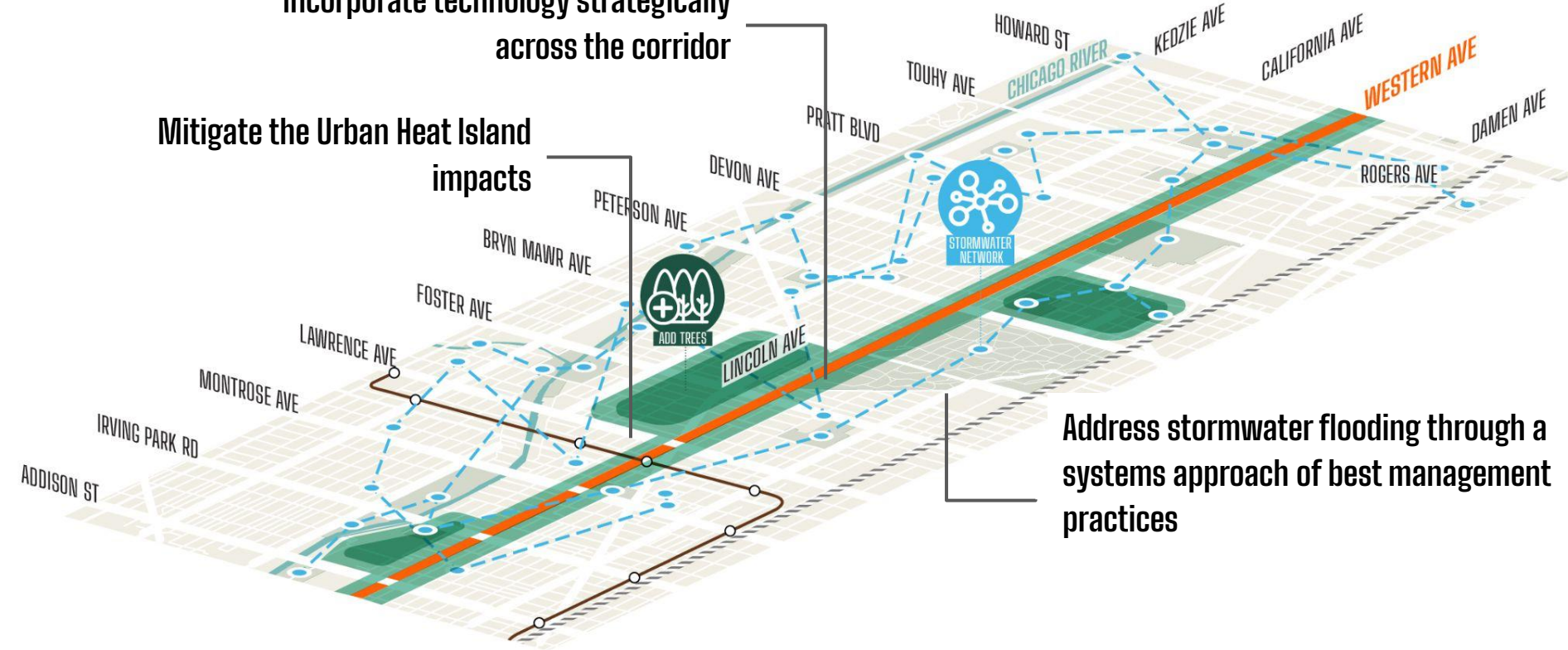


Resilient & Sustainable Corridor : Principles

**Incorporate technology strategically
across the corridor**

**Mitigate the Urban Heat Island
impacts**

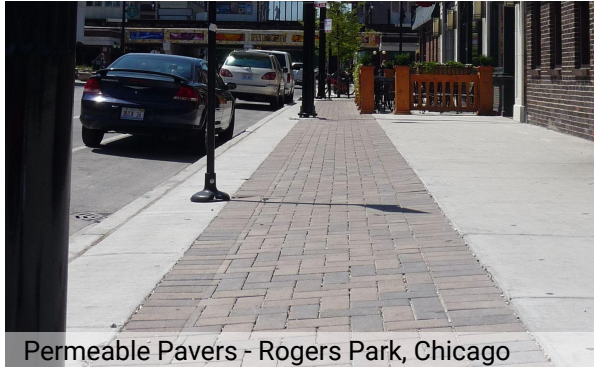
**Address stormwater flooding through a
systems approach of best management
practices**





Mitigate the Urban Heat Island impacts

- Increase tree canopy cover along the corridor with large landscape islands, along the sidewalk and in the medians.
- Use streetscape plantings to define on-street parking and loading areas (e.g., curb extension planter).
- Utilize high albedo pavement materials, landscaping, and permeable pavements to reduce ambient summer temperatures.



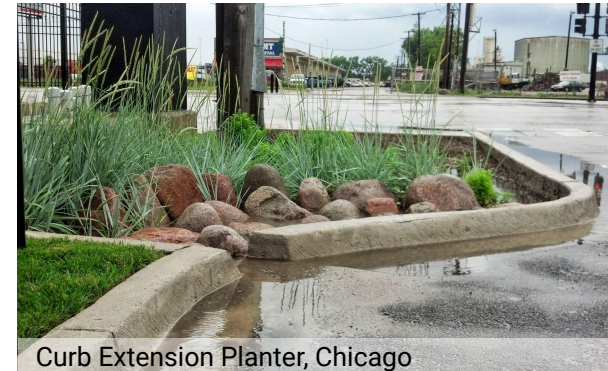
Permeable Pavers - Rogers Park, Chicago



Sidewalk Raised Planters, Edgebrook, Chicago



Center planted median - Ashland Ave, Chicago



Curb Extension Planter, Chicago



Address stormwater flooding through a systems approach of best management practices

- Implement a network of stormwater best management practices and design interventions.
- Utilize permeable materials within parking areas.
- Implement green alleys in key areas
- Utilize redevelopment sites for storage, biofiltration, and stormwater management strategies..





Incorporate technology strategically across the corridor

- Maximize use of solar power and LED lighting in renovation, re-use, and new development.
- Implement pedestrian counters at key mixed-use hubs.
- Incorporate “Smart” furnishings and fixtures in public spaces.



Solar and wind-powered energy station, Chicago



Bike and Pedestrian Counter, Minnesota



Relay trash receptacle, Victor Stanley



BREAK OUT SESSIONS



BREAK OUT SESSIONS



How to join a break out room?

If there is a topic you would like to discuss in more depth during the meeting, please select one below.

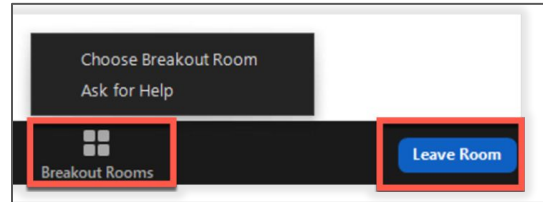
Choose One...

Choose One...

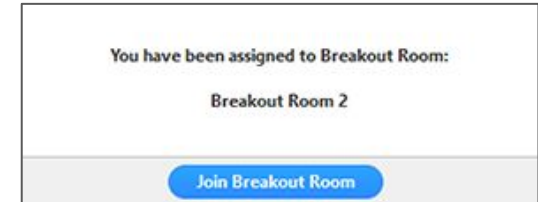
- Land use & development
- Mobility & public spaces
- Sustainability & resilience

with the a

If you selected a preferred topic through your **zoom registration**, you will be assigned to that break out group.



Click the **"Breakout Rooms"** button at the bottom of the zoom screen to choose a breakout room.



Click the **pop-up button** "Join the Breakout Room" - it takes a few seconds to join.



BREAK OUT SESSION 1: **Thriving Places**



How to participate during break outs?

Online Polling



Follow instructions
on top of screen
(online / text)

Submit Questions or Comments



Use the chat to submit
questions or comments

Facilitator will include in the
discussion as possible

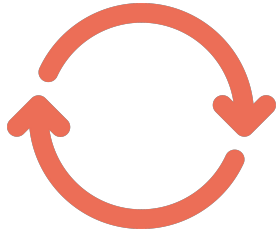
Raise Your Hand for Speaking Turn



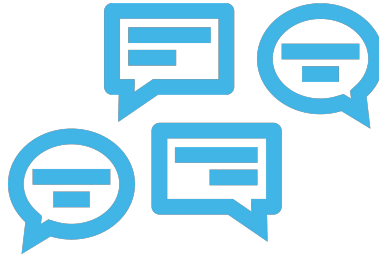
Click the Raise Your
Hand button

Facilitator will call
your name

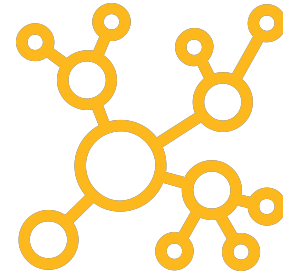
Participation Principles: The Conversation



We will be **transparent** by sharing relevant information, ideas, and concerns with one another.

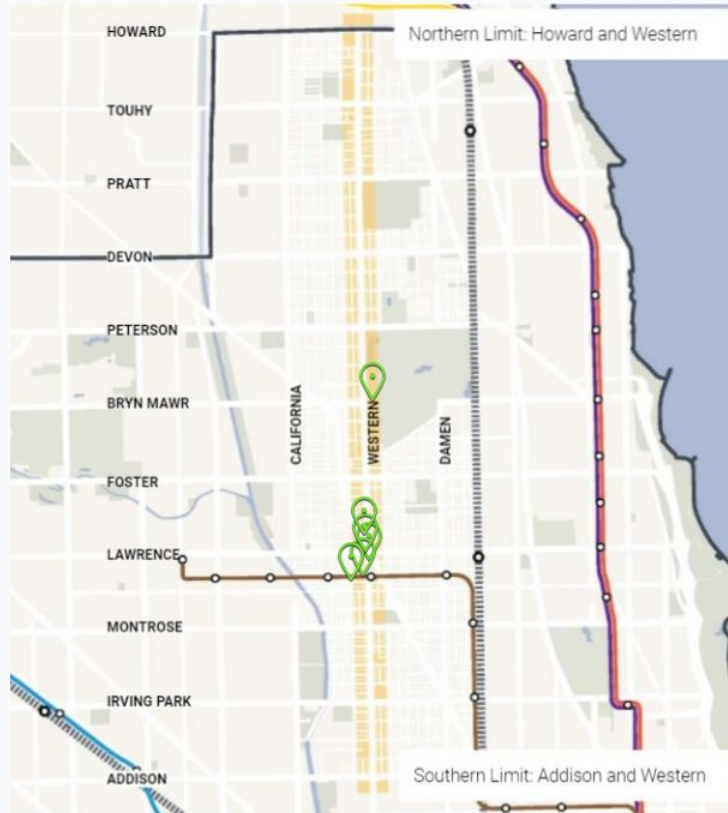


We will seek **inclusion** by **listening to as many voices as possible** while embracing productive tensions and respectful disagreements.



We will **communicate in good faith**, in a spirit of collaboration and mutual respect.

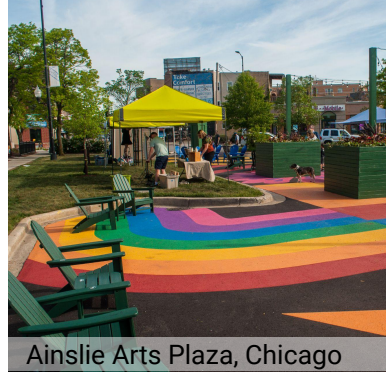
Which part of the corridor are you most familiar with? *Click on the map.*





Celebrate and Enhance the Corridor's Unique Assets

- Use art and branding similar to other successful places as Lincoln Square, Devon, and Ainslie Arts Plaza
- Support a localized and diverse economy
- Emphasize Cultural Heritage Districts



Ainslie Arts Plaza, Chicago



Lincoln Square, Chicago



Waveland Bowl, Chicago



City Grange, Catalpa & Western



Devon's "Intersection stamp"

Do you agree with the draft planning principle: "Celebrate and Enhance the Corridor's Unique Assets"?





Concentrate Development into Vibrant Mixed-Use Hubs

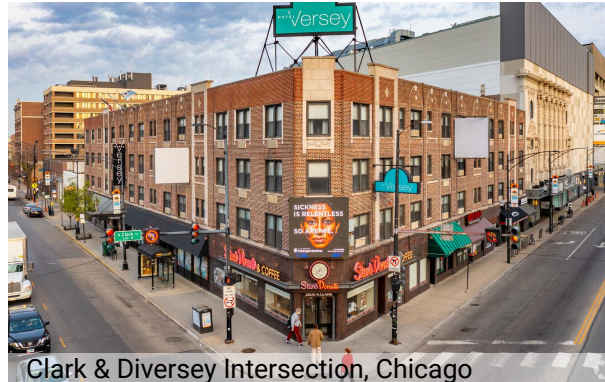
- Steer mixed-use development to transit-rich, locations with strong local residential customer bases.
- Include housing, retail, business and community services and culture..



The Galvin TOD, Rockville Maryland



Cottage Grove Corridor, Bronzeville

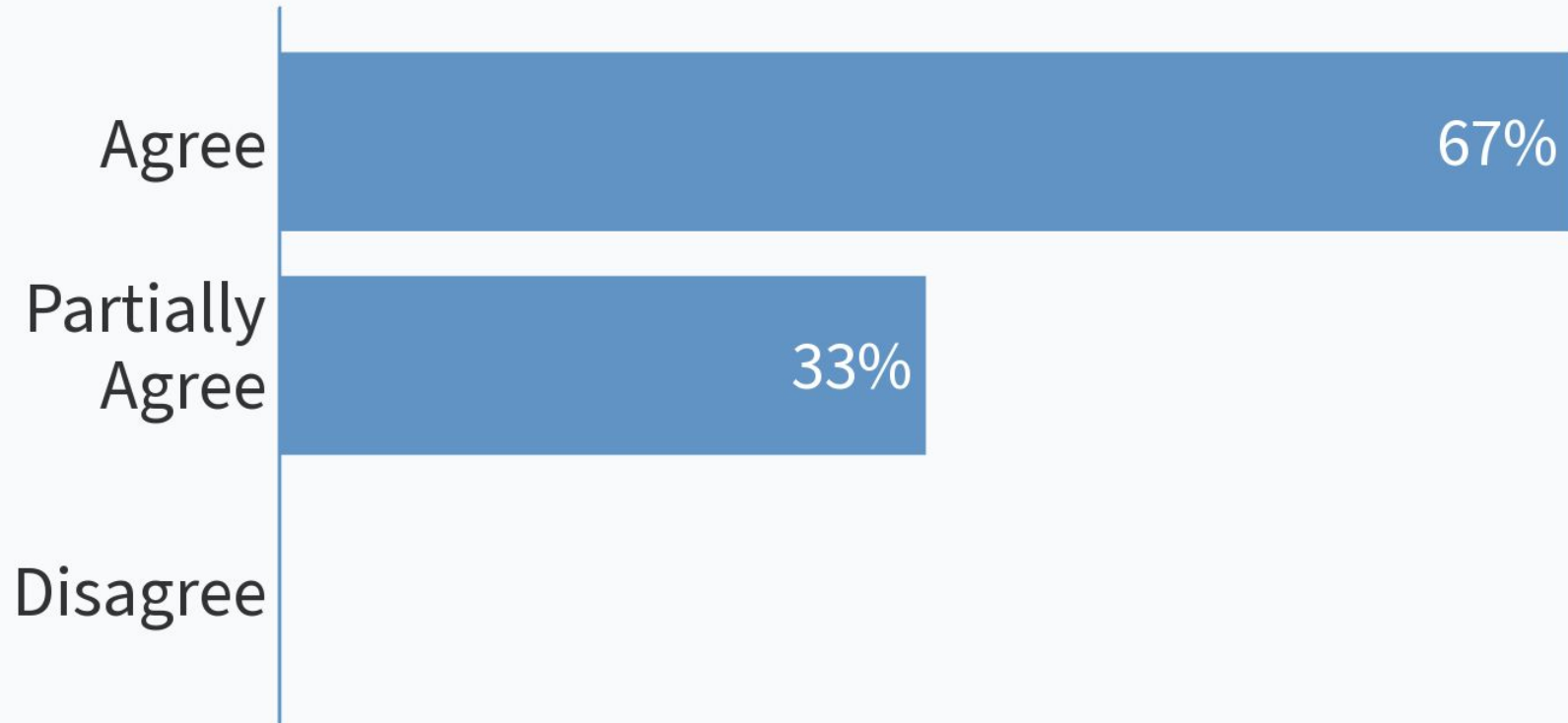


Clark & Diversey Intersection, Chicago



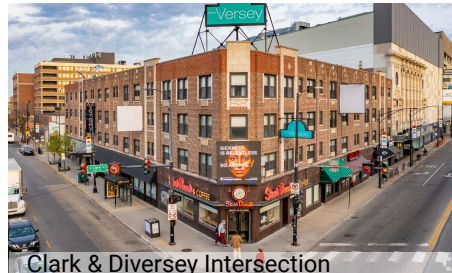
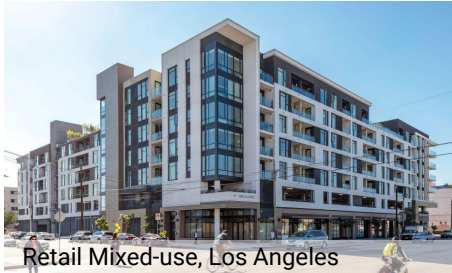
Retail mixed use, Wicker Park, Chicago

Do you agree with the draft planning principle, "Concentrate Development into Vibrant Mixed-use Hubs"?



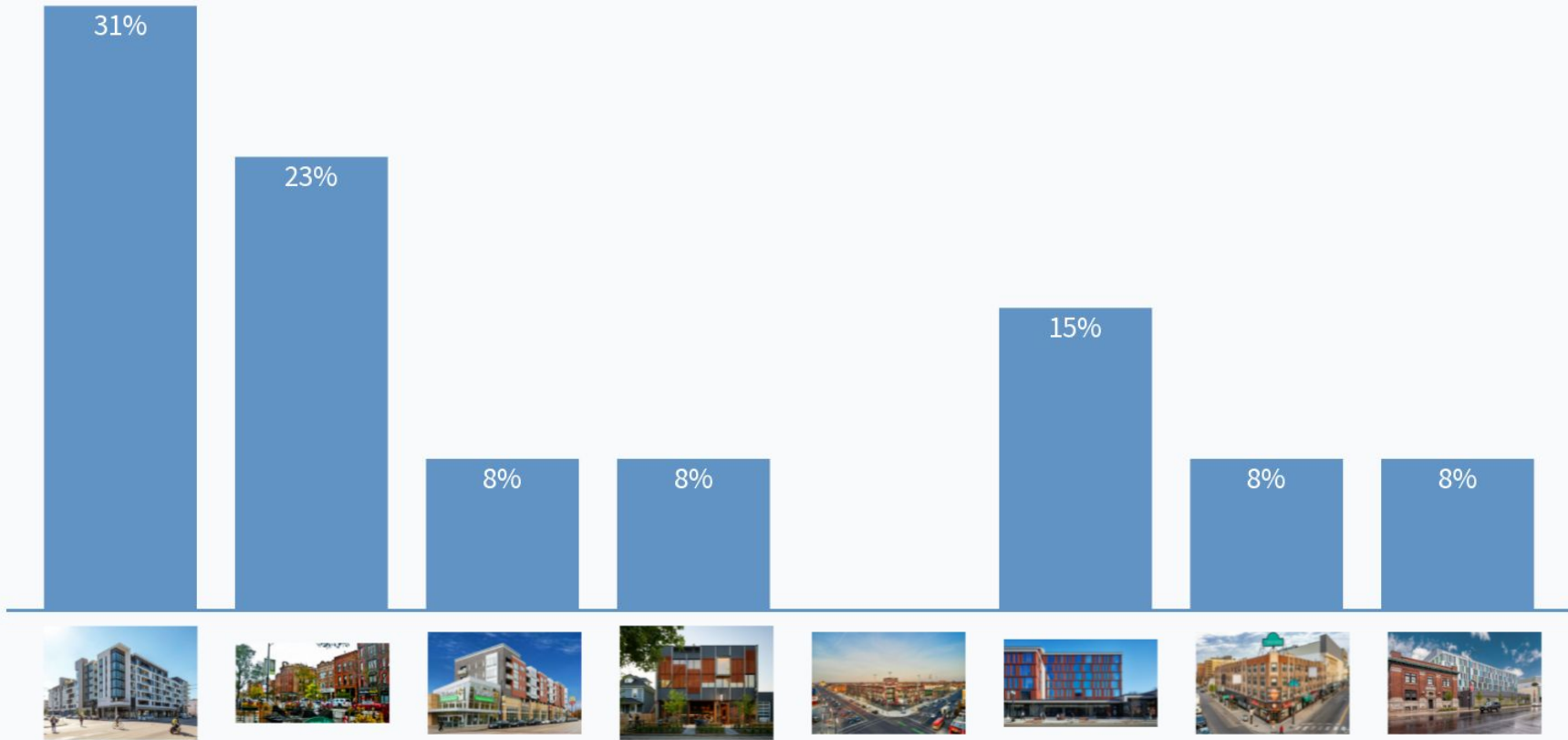


Which photos of development below best illustrate what you would like to see at mixed-use hubs along Western?



Which of the photos below best illustrate what you would like to see developed along Western Avenue.

Select all that apply.





Encourage New Housing Along the Corridor Between Mixed-Use Hubs

- Encourage residential development at opportunity sites between Mixed-Use hubs..
- Encourage residential use on all floors, including the ground floor.
- Provide housing that meets a range of community needs.



Buena Park, Chicago



Condominium building by SGW, Chicago

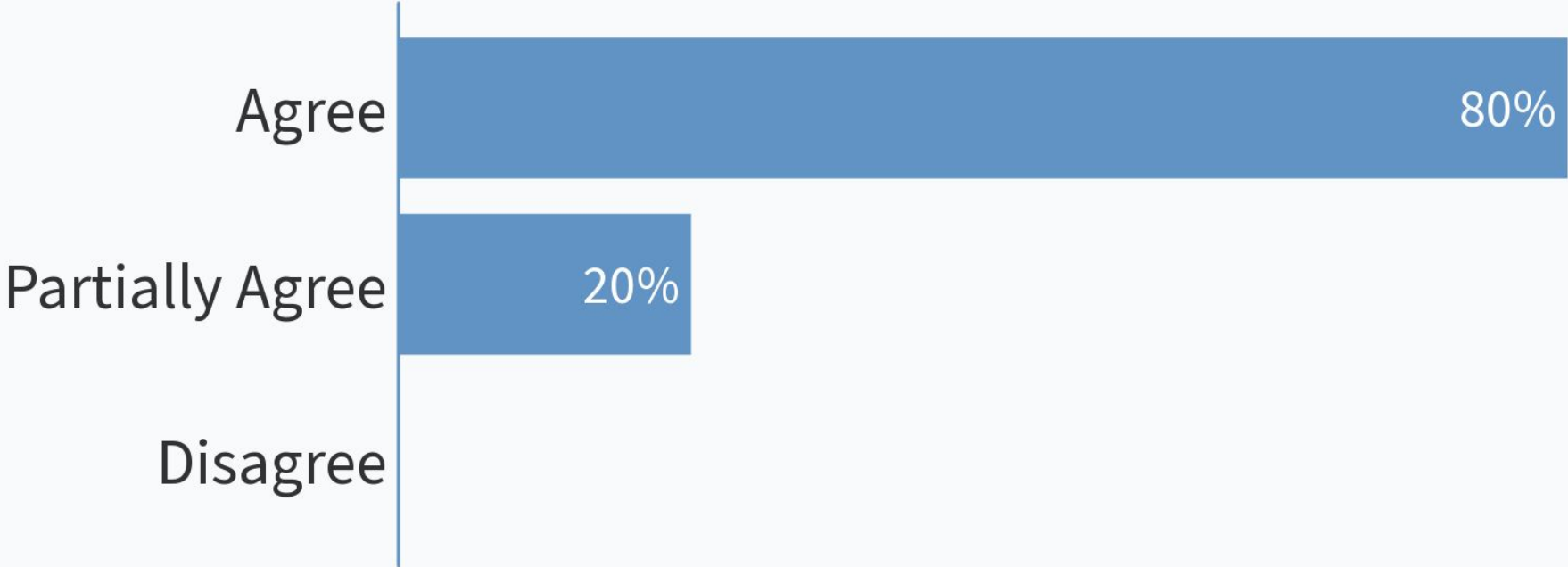


Residential Development, Western Ave



Residential Development, Western Ave

Do you agree with the draft planning principle: "Encourage New Housing Along the Corridor Between Mixed-Use Hubs"?



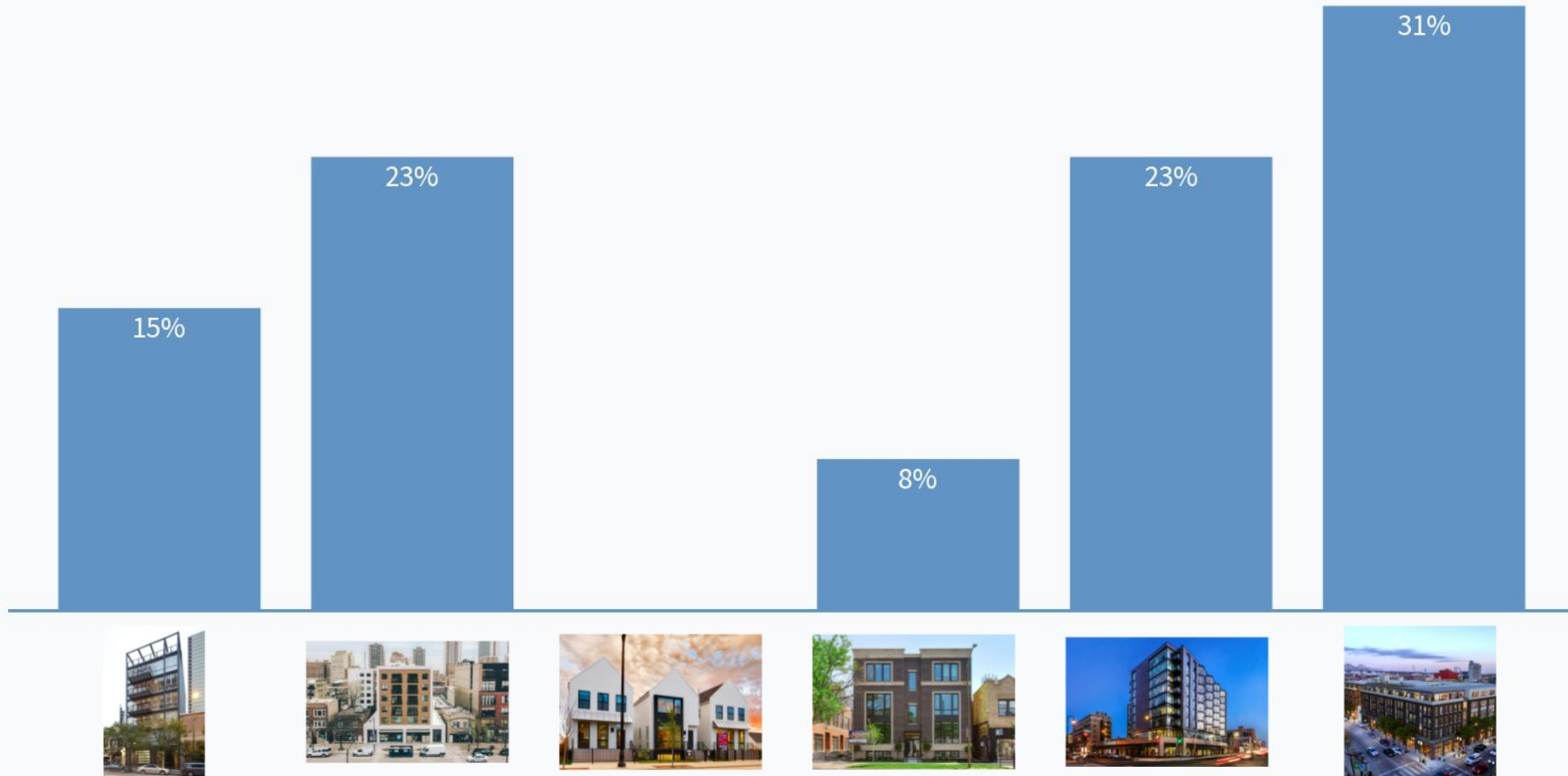


Which of the photos below illustrate the types of housing you'd like to see along Western Avenue? *Select all that apply.*



Which of the photos below illustrate the types of housing you'd like to see along Western Avenue?

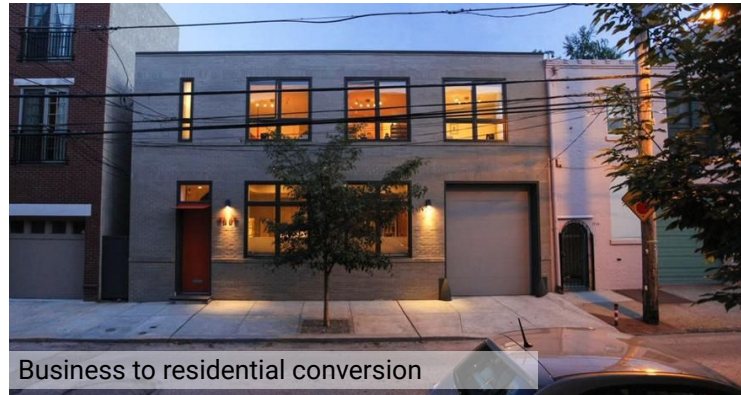
Select all that apply.



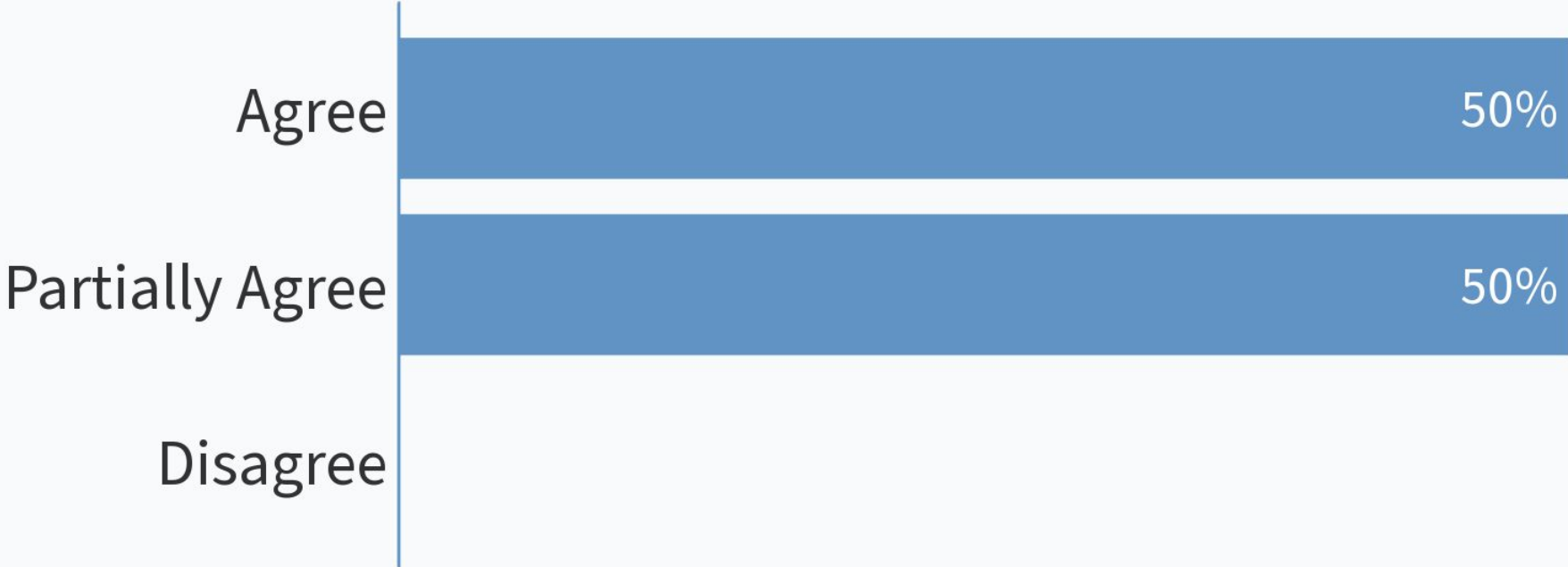


Encourage Building Re-use for Housing along the Corridor Between Mixed-Use Hubs

- Encourage residential re-use of vacant retail and commercial buildings.

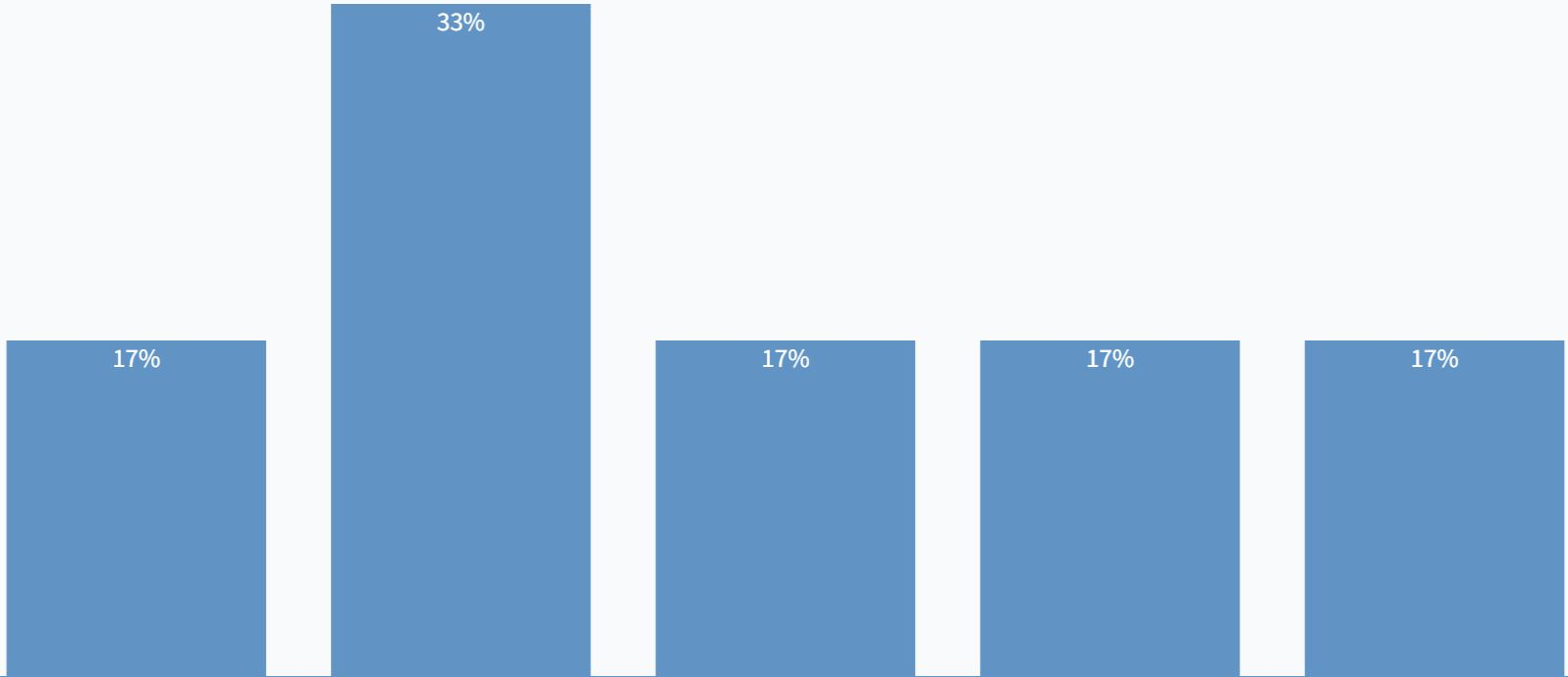


Do you agree with the draft planning principle: "Encourage Building Re-use for Housing Along the Corridor Between Mixed-Use Hubs"?



Which of the photos below illustrate the types of housing conversions you'd like to see along Western Avenue?

Select all that apply.





BREAK OUT SESSION 2: Safe & Attractive Streets



How to participate during break outs?

Online Polling



Follow instructions
on top of screen
(online / text)

Submit Questions or Comments



Use the chat to submit
questions or comments

Facilitator will include in the
discussion as possible

Raise Your Hand for Speaking Turn



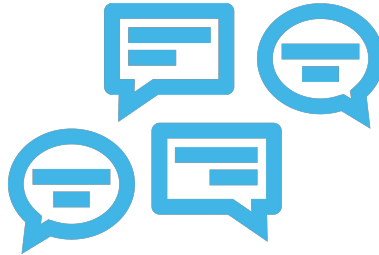
Click the Raise Your
Hand button

Facilitator will call
your name

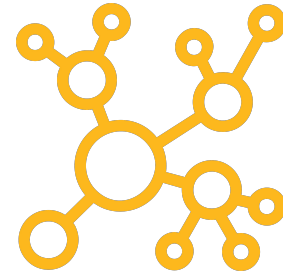
Participation Principles: The Conversation



We will be **transparent** by sharing relevant information, ideas, and concerns with one another.

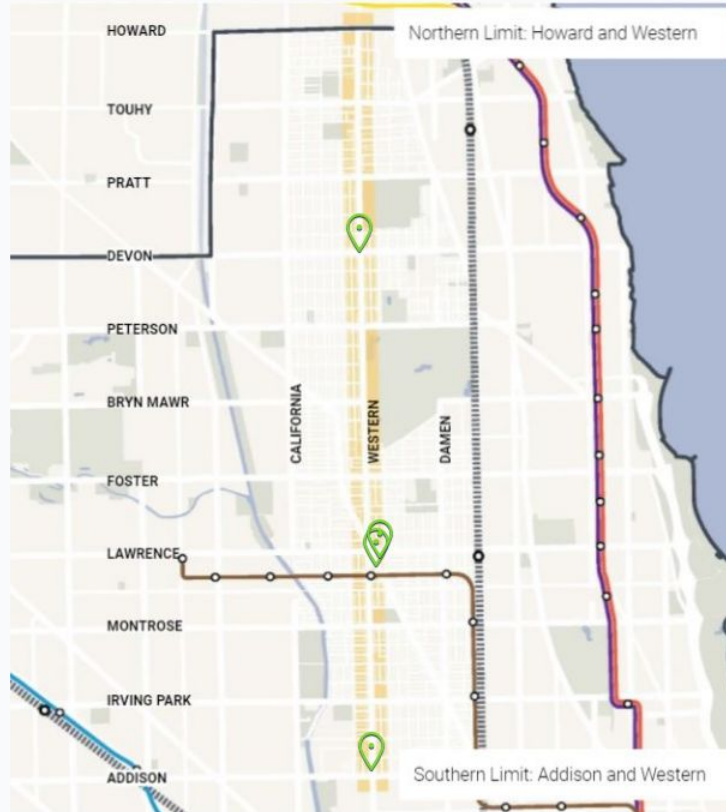


We will seek **inclusion** by **listening to as many voices as possible** while embracing productive tensions and respectful disagreements.



We will **communicate in good faith**, in a spirit of collaboration and mutual respect.

Which part of the corridor are you most familiar with? *Click on the map.*





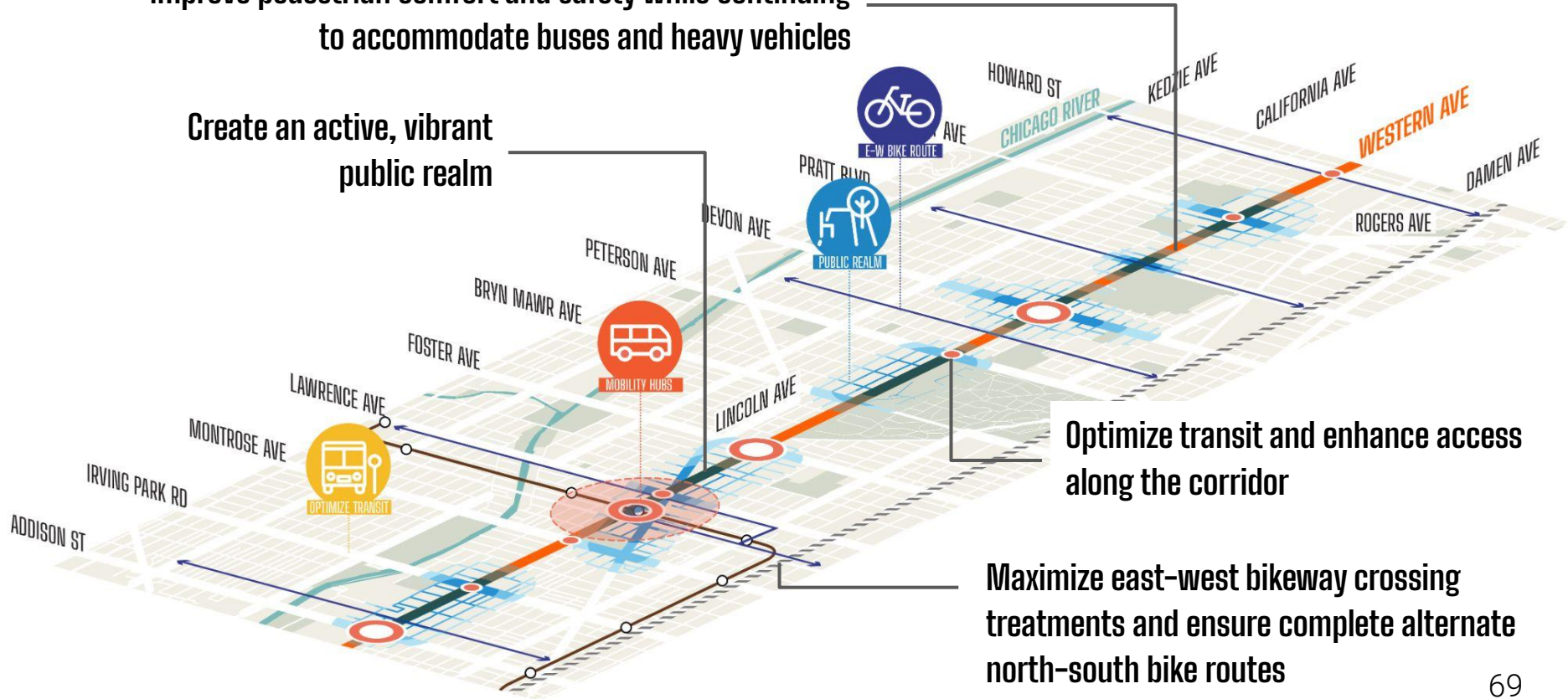
Safe and Attractive Streets : Principles

Improve pedestrian comfort and safety while continuing to accommodate buses and heavy vehicles

Create an active, vibrant public realm

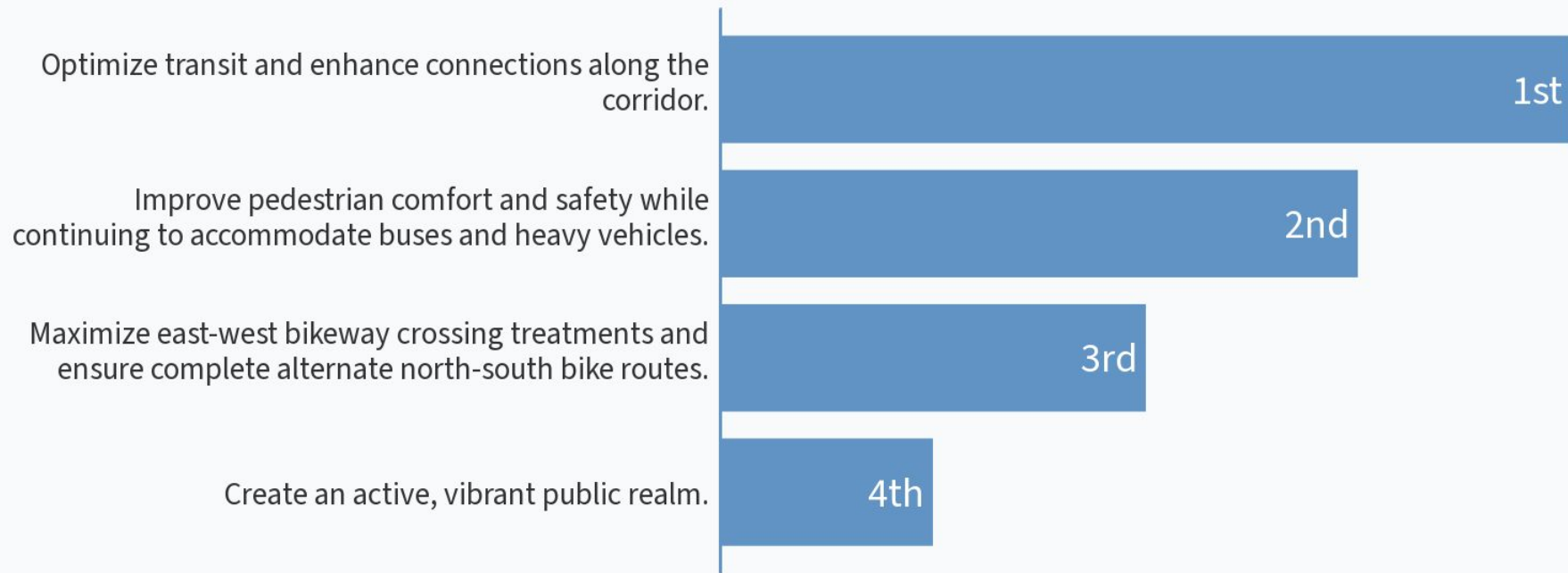
Optimize transit and enhance access along the corridor

Maximize east-west bikeway crossing treatments and ensure complete alternate north-south bike routes



Which of the safe and attractive streets principles are most important to your community?

Rank in order of importance:





Which of the following amenities would most increase pedestrian comfort along Western Avenue? *Select all that apply.*



Street trees in tree grates



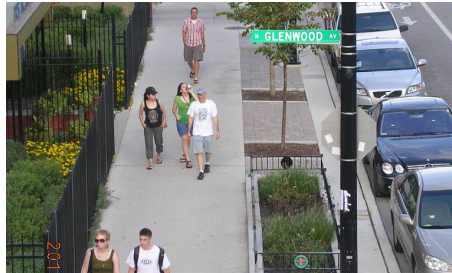
Street trees in landscaped parkways



In-ground planters



Movable planters



Widened sidewalks



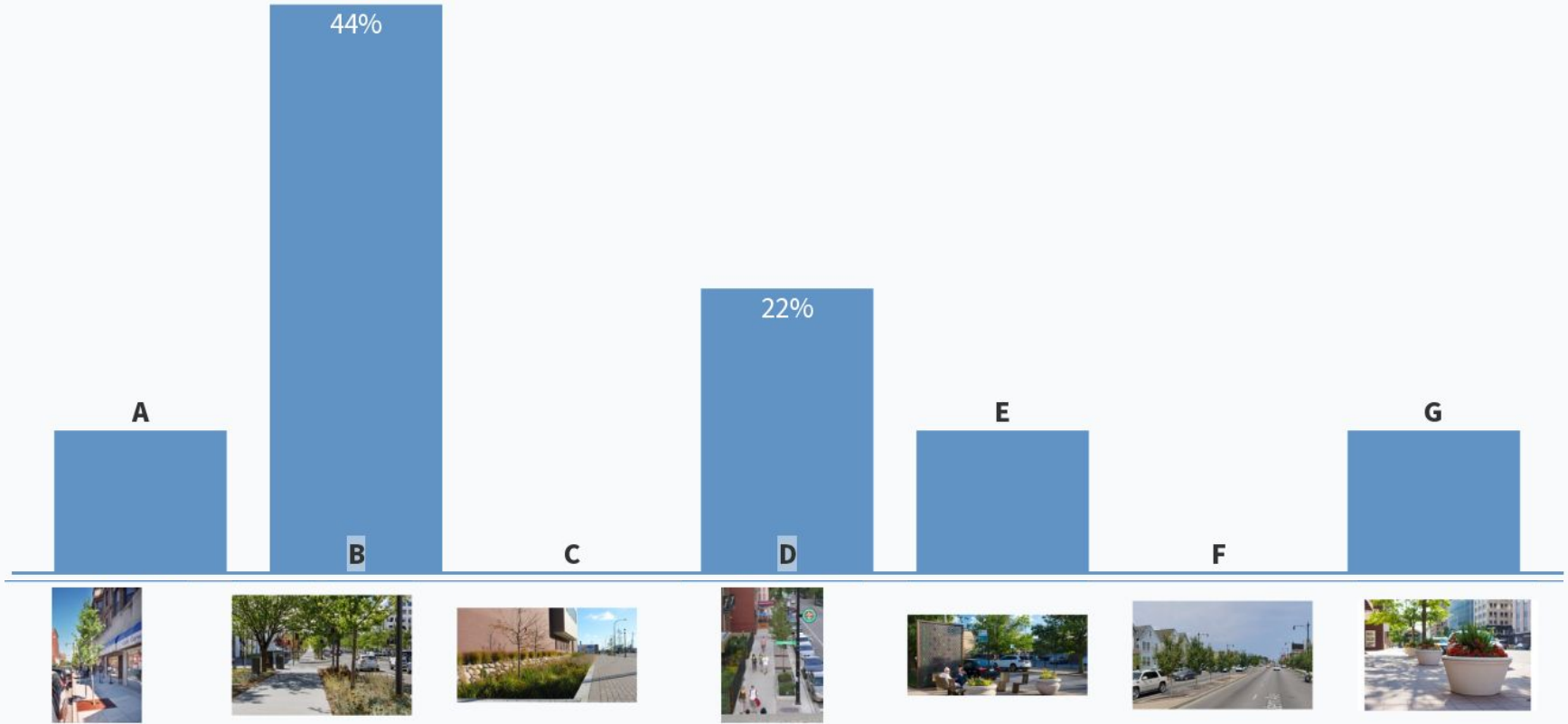
Seating (e.g. benches, tables and chairs)



Medians with trees

Which of the following amenities would most increase pedestrian comfort along Western Avenue?

Select all that apply.

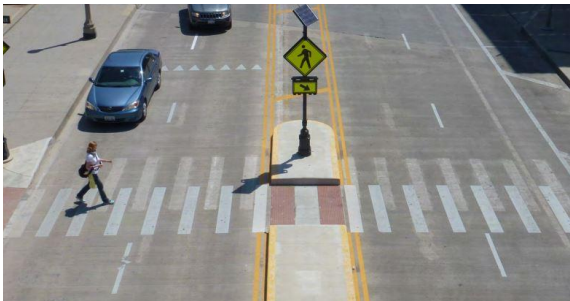




Which of the following types of pedestrian safety improvements would you like to see along Western Avenue? *Select all that apply.*



Curb Extensions



Rectangular Rapid Flashing Beacon, Monroe St



Upgraded lighting



Pedestrian Refuge Island, Lawrence Ave

Which of the following types of pedestrian safety improvements would you like to see along Western Avenue?

Select all that apply.

33%

33%

33%



Discussion

Where would you most like to see these safety improvements along the corridor?

Discussion

Why is your selection a priority for your community?

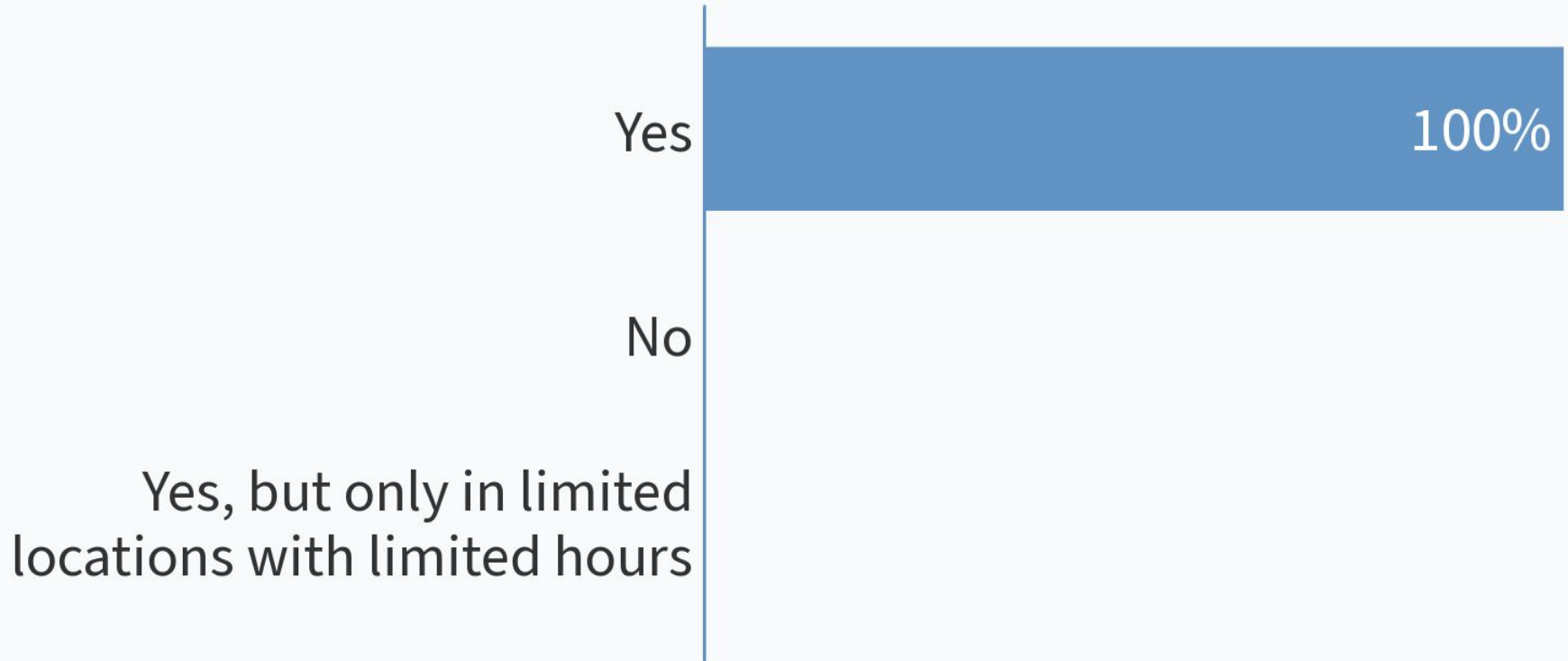
Discussion

What can be done to improve connections to other north-south bike alternatives?

Discussion

**What can be done to improve
east-west bike connections across
Western Avenue?**

To improve transit, would you support the removal of some on-street parking on Western Avenue?



Discussion

**For those using public transit along
Western Avenue, what would
improve your experience?**

Discussion

Is there anything missing from the four safe and attractive streets principles outlined today?



BREAK OUT SESSION 3: Resilient & Sustainable Corridor



How to participate during break outs?

Online Polling



Follow instructions
on top of screen
(online / text)

Submit Questions or Comments



Use the chat to submit
questions or comments

Facilitator will include in the
discussion as possible

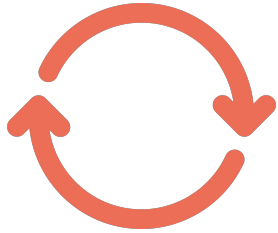
Raise Your Hand for Speaking Turn



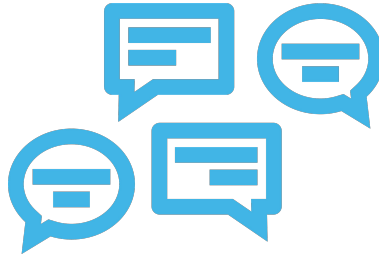
Click the Raise Your
Hand button

Facilitator will call
your name

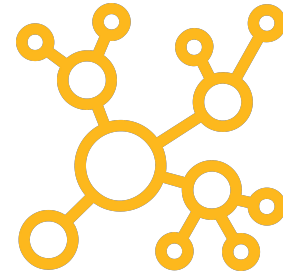
Participation Principles: The Conversation



We will be **transparent** by sharing relevant information, ideas, and concerns with one another.

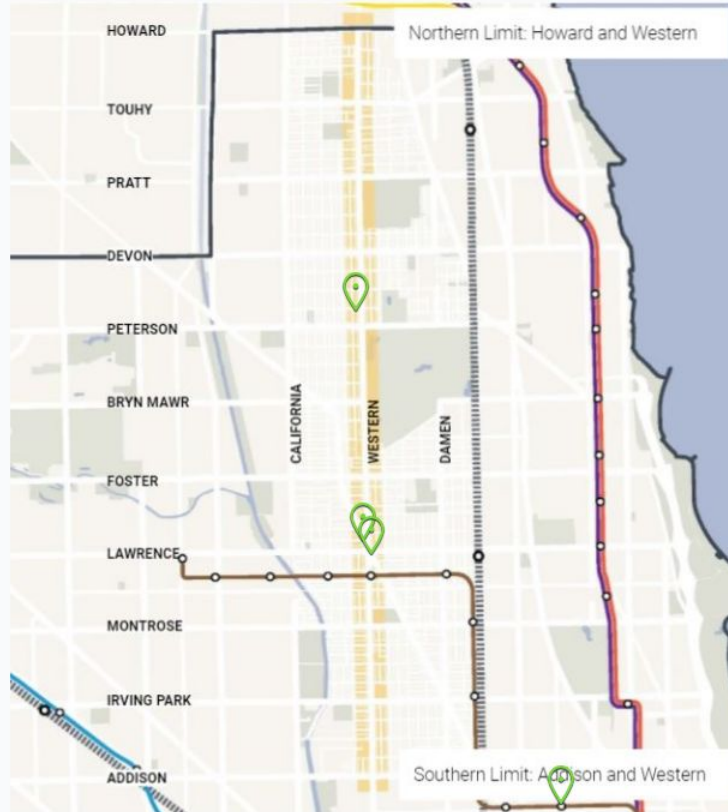


We will seek **inclusion** by **listening to as many voices as possible** while embracing productive tensions and respectful disagreements.



We will **communicate in good faith**, in a spirit of collaboration and mutual respect.

Which part of the corridor are you most familiar with? *Click on the map.*



Discussion

What is the most pressing issue regarding resilience and sustainability along the corridor?



Which of the photos below illustrate the types of urban heat island mitigation you'd like to see along Western Avenue?

Select all that apply.



Permeable Pavers - Rogers Park, Chicago



Sidewalk Raised Planters, Edgebrook, Chicago



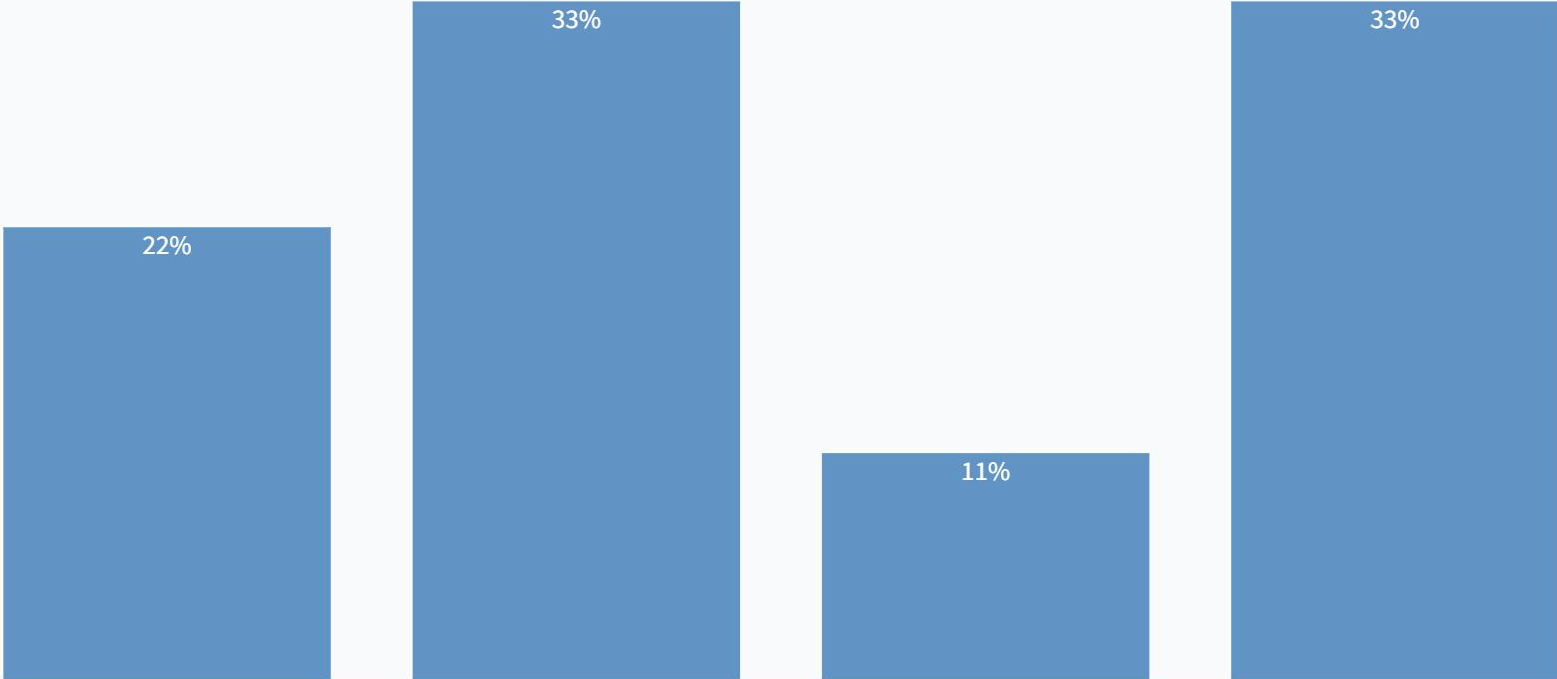
Center planted median - Ashland Ave, Chicago



Curb Extension Planter, Chicago

Which of the photos below illustrate the types of urban heat island mitigation you'd like to see along Western Avenue?

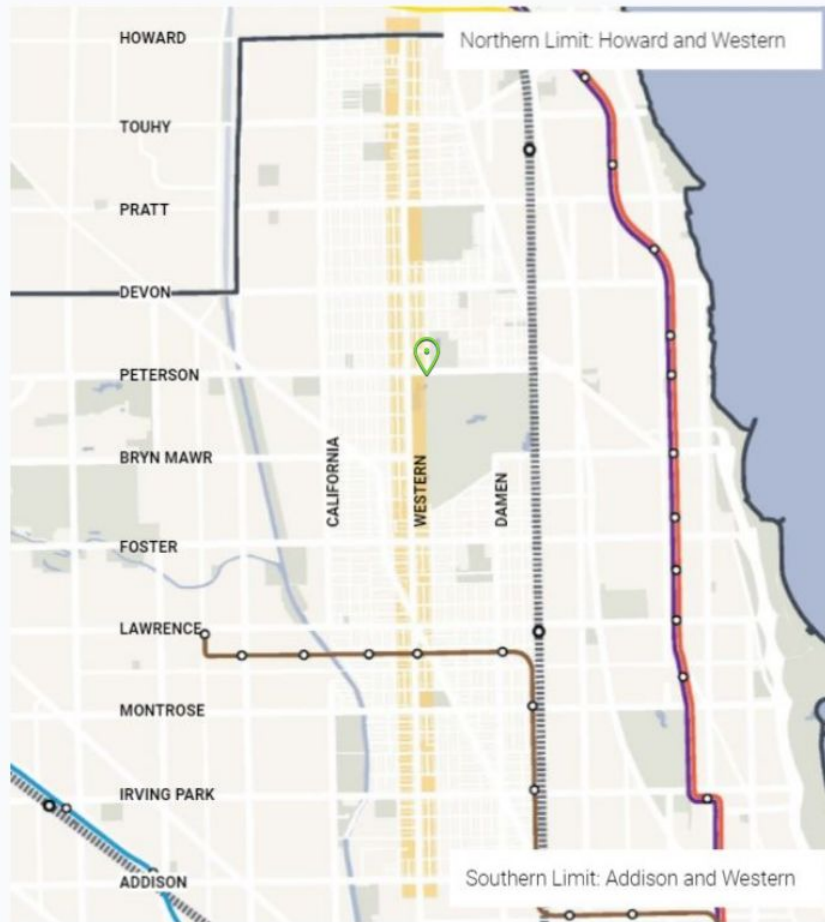
Select all that apply.



Do you agree with the draft planning principle, "Address chronic stormwater flooding through a systems approach of best management practices"?



Where do you experience flooding along the corridor?





Which of the following stormwater best management practices would you like to see along Western Avenue? *Select all that apply.*



Green Roofs



Infiltration Planters



Permeable Pavers



Planted Medians

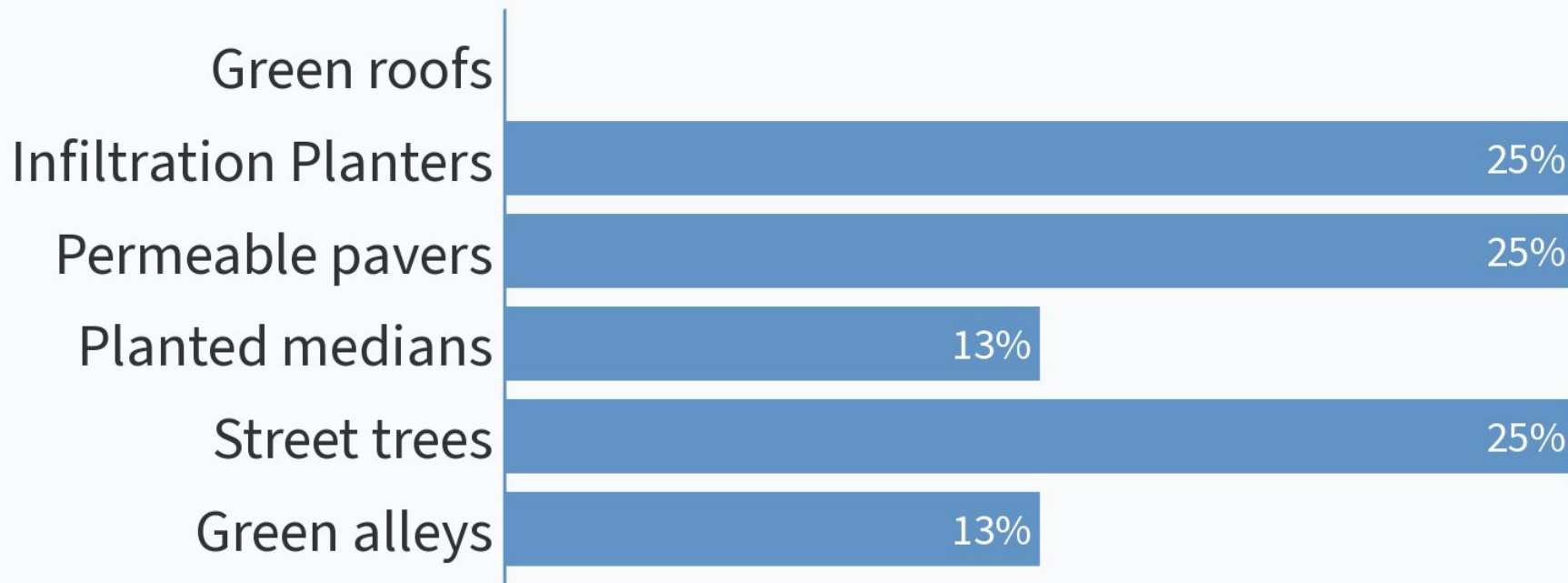


Street Trees



Green Alleys

Which of the following stormwater best management practices would you like to see along Western Avenue.
Select all that apply.



Discussion

Are we missing any principles to guide future resilient and sustainable strategies?



DISCUSSION THEMES





NEXT STEPS



Get Involved & Stay Connected

New survey and focus groups coming soon!

Sign up for email updates:
<https://bit.ly/3qP5crl>

Visit our website:
chicago.gov/western

Send additional questions to
WesternAve@cityofchicago.org

Stay connected!

 @chicagodpd

 @chicagowesternave

 @chicago.dot

 @ChicagoDPD @ChicagoDOT



Thank You!

