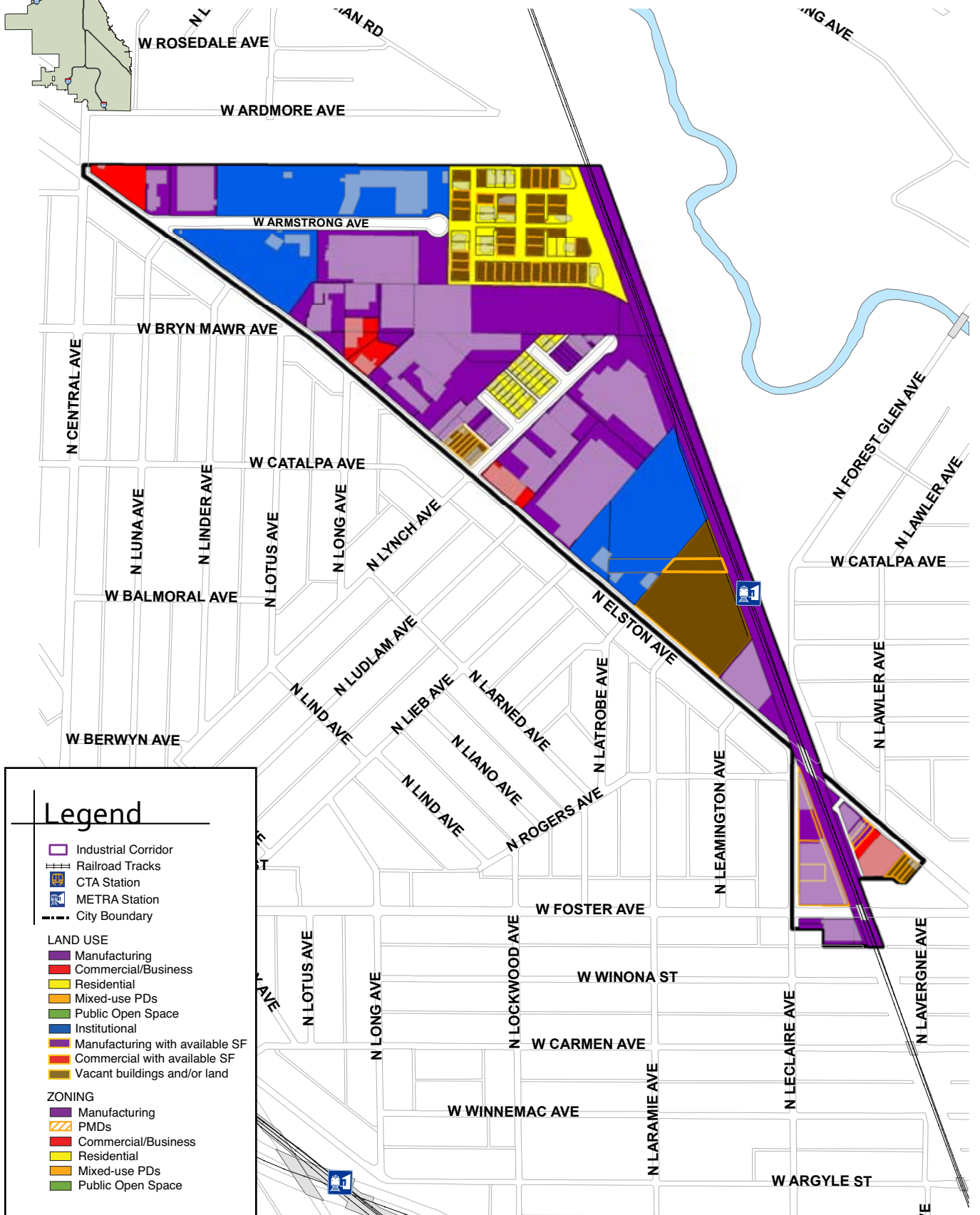


Industrial Corridor – Elston/Armstrong

Land Use



Legend

- Industrial Corridor
- Railroad Tracks
- CTA Station
- METRA Station
- City Boundary

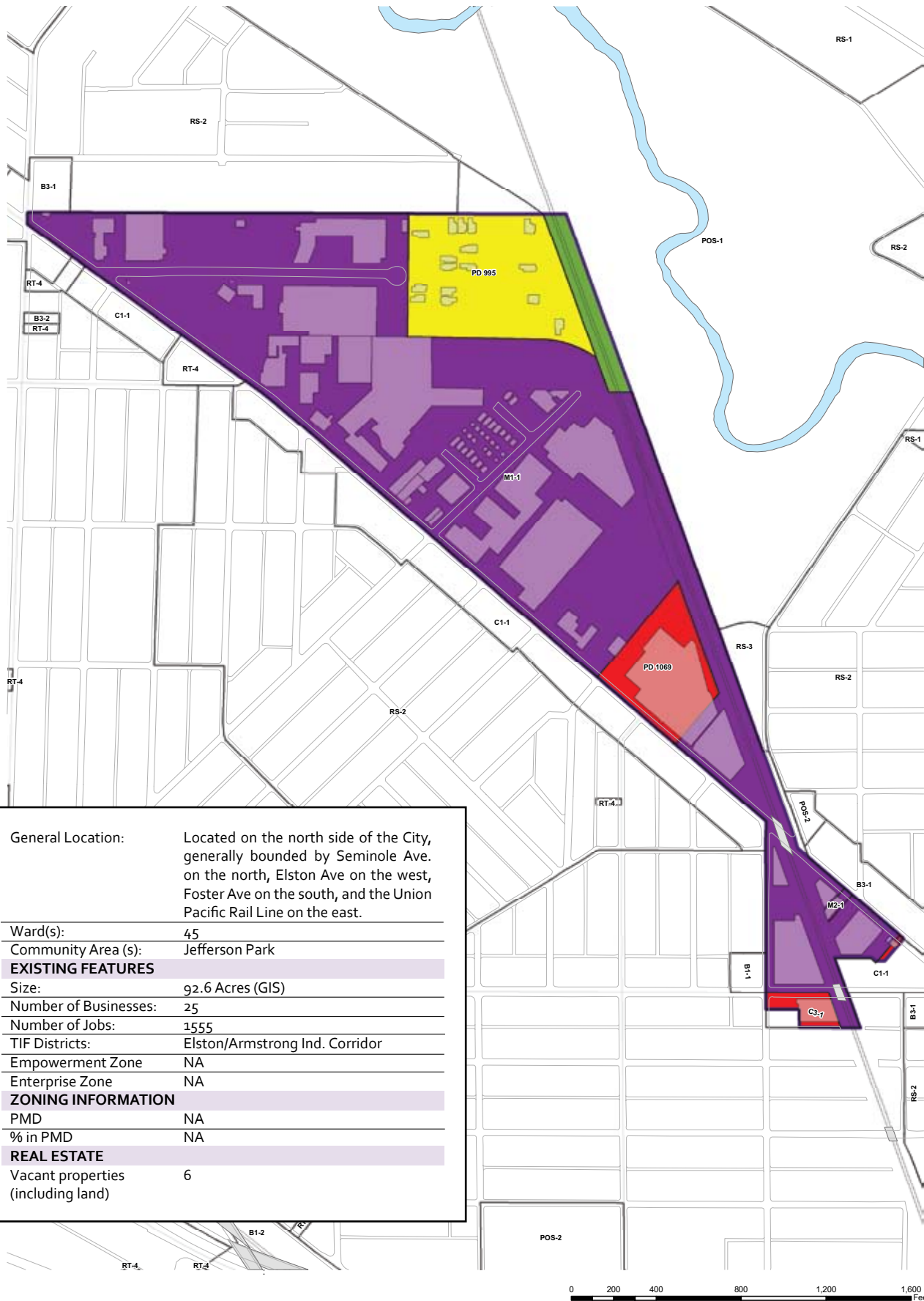
LAND USE

- Manufacturing
- Commercial/Business
- Residential
- Mixed-use PDs
- Public Open Space
- Institutional
- Manufacturing with available SF
- Commercial with available SF
- Vacant buildings and/or land

ZONING

- Manufacturing
- PMDs
- Commercial/Business
- Residential
- Mixed-use PDs
- Public Open Space

Existing Zoning



General Location:	Located on the north side of the City, generally bounded by Seminole Ave. on the north, Elston Ave on the west, Foster Ave on the south, and the Union Pacific Rail Line on the east.
Ward(s):	45
Community Area (s):	Jefferson Park
EXISTING FEATURES	
Size:	92.6 Acres (GIS)
Number of Businesses:	25
Number of Jobs:	1555
TIF Districts:	Elston/Armstrong Ind. Corridor
Empowerment Zone	NA
Enterprise Zone	NA
ZONING INFORMATION	
PMD	NA
% in PMD	NA
REAL ESTATE	
Vacant properties (including land)	6