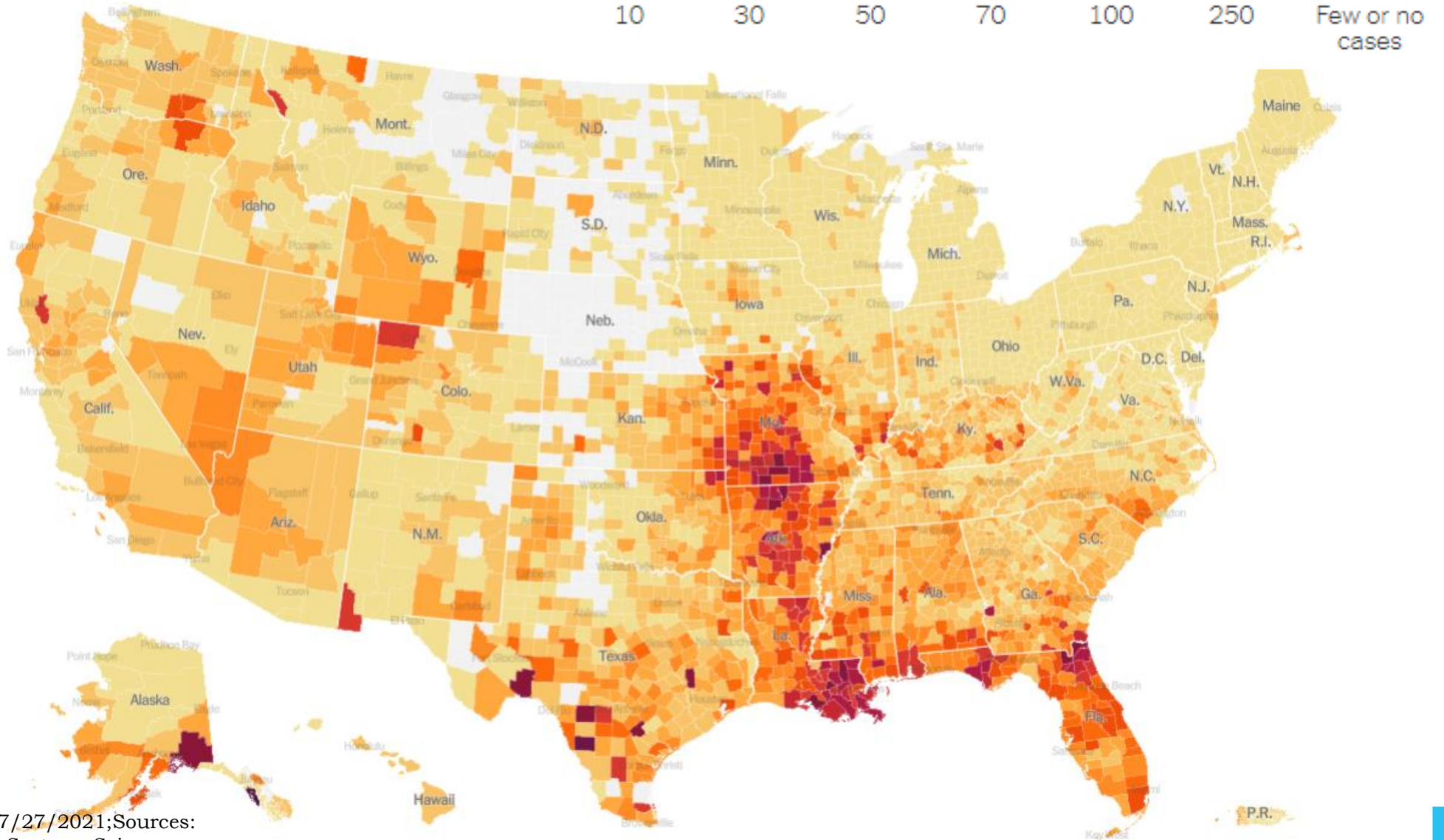
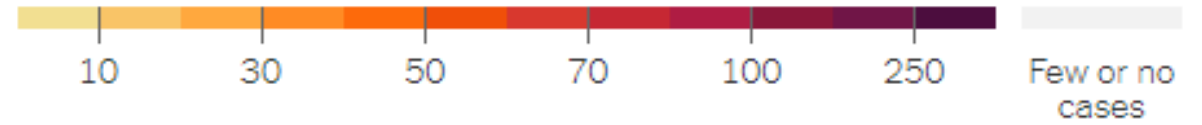


PROTECT
CHICAGO ★

PROTEGE A
CHICAGO ★

Average daily COVID-19 cases per 100k in the past week

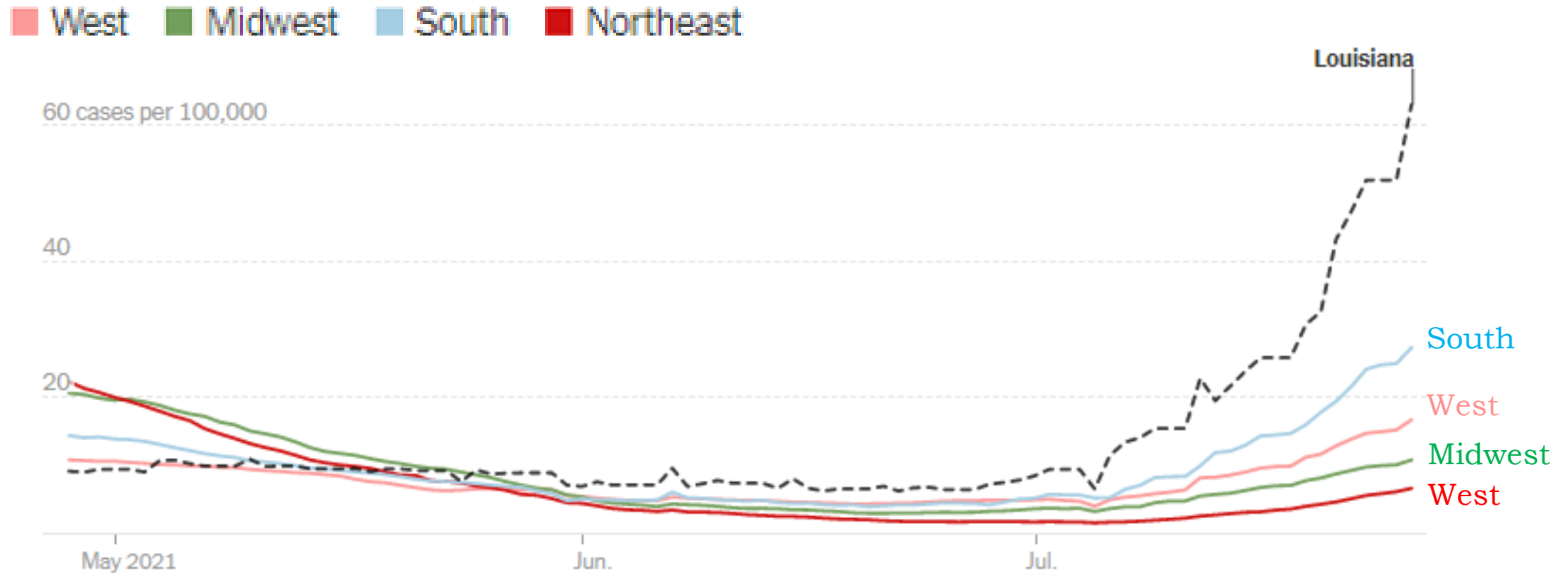
Average daily cases per 100,000 people in past week



34 Million Cases
609,000+ Deaths



Nationally, COVID-19 cases are **increasing** the most in regions with lower vaccination rates



Chicago COVID-19 Community Risk Matrix - Phase V

	Very high risk	High risk	Moderate risk	Lower risk	Low risk: Controlled transmission
COVID-19 cases diagnosed per day <small>Chicago residents 7-day rolling daily average</small>	800+	400 – 799	200 – 399	20 – 199 Current: 165 Increasing	<20
COVID-19 test positivity <small>Chicago residents 7-day rolling daily average</small>	10%+	6.6 - 9.9%	5.0 - 6.5%	2 - 4.9% current: 2.6% Increasing	<2%
Hospital beds(non-ICU) occupied by COVID patients <small>Chicago hospitals 7-day rolling daily average</small>	1250+	750-1249	250 - 749	100 – 249 current: 101 Increasing	<100
ICU beds occupied by COVID patients <small>Chicago hospitals 7-day rolling daily average</small>	400+	300 - 399	100 – 299	20 - 99 current: 32 Increasing	<20
Additional considerations within each risk level	<i>*Metric will revert to very high risk if 7+ consecutive days \geq15% higher than the week prior</i>	<i>*Metric will revert to high risk if 5+ consecutive days \geq10% higher than the week prior</i>	<i>Metrics must continue to decrease or remain stable relative to the week prior</i>	<i>Metrics must continue to decrease or remain stable relative to the week prior</i>	<i>Metrics must continue to decrease or remain stable relative to the week prior</i>

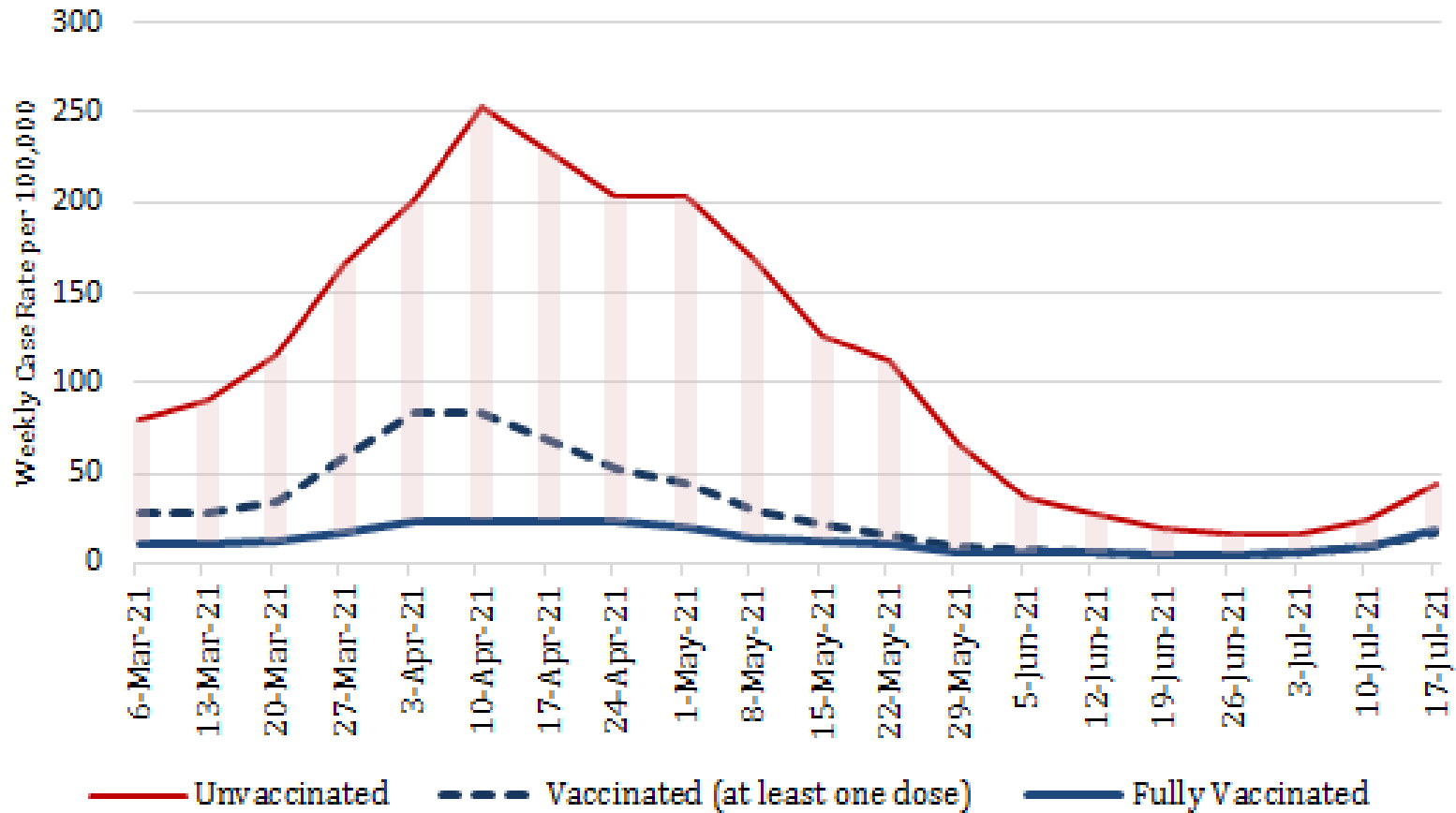
Chicago COVID-19 Test Positivity Rate is **2.6%**; still in the **lower risk** category but increased from a low of **0.4%** in June 2021



In Chicago, **unvaccinated people** remain much more likely to be diagnosed with COVID-19 than **partially or fully vaccinated people**



Weekly Chicago Case Rate per 100,000 by Vaccination Status

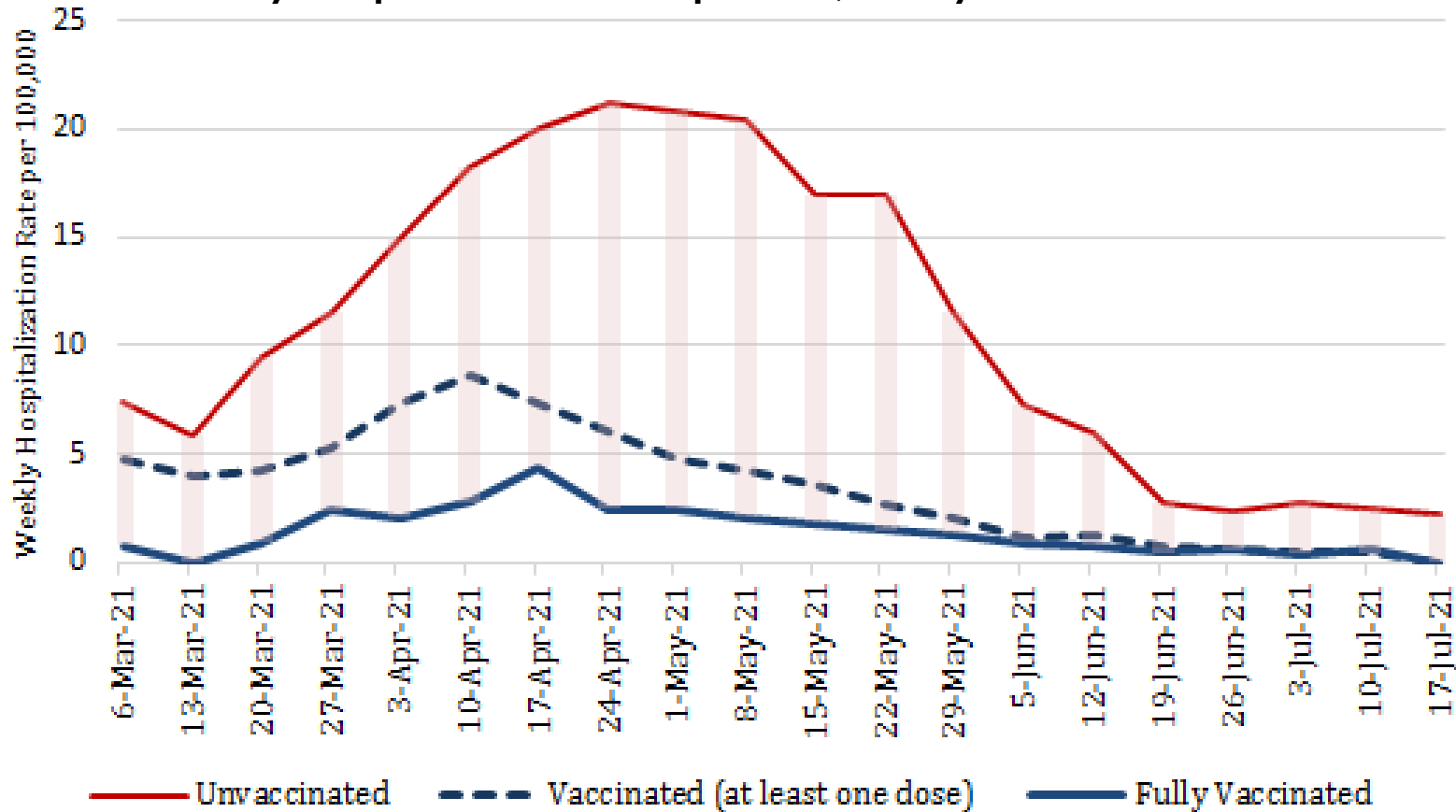


Notes: Includes cases among Chicago residents reported into the Illinois Electronic Disease Surveillance System (I-NEDSS) with date of specimen collection 1/1/21-7/17/21, pulled 7/20/2021. Vaccination status obtained from the Illinois Comprehensive Automated Immunization Registry (I-CARE) registry; Vaccinated defined as having had at least one dose **prior to** a positive test. Rate for vaccinated calculated as total cases divided by cumulative vaccinated at the end of each week, multiplied by 100,000. Rate for unvaccinated calculated as total cases divided by total population minus cumulative vaccinated at the end of each week, multiplied by 100,000.



In Chicago, **unvaccinated people** remain much more likely to be hospitalized with COVID-19 than **partially** or **fully vaccinated people**

Weekly Hospitalization Rate per 100,000 by Vaccination Status

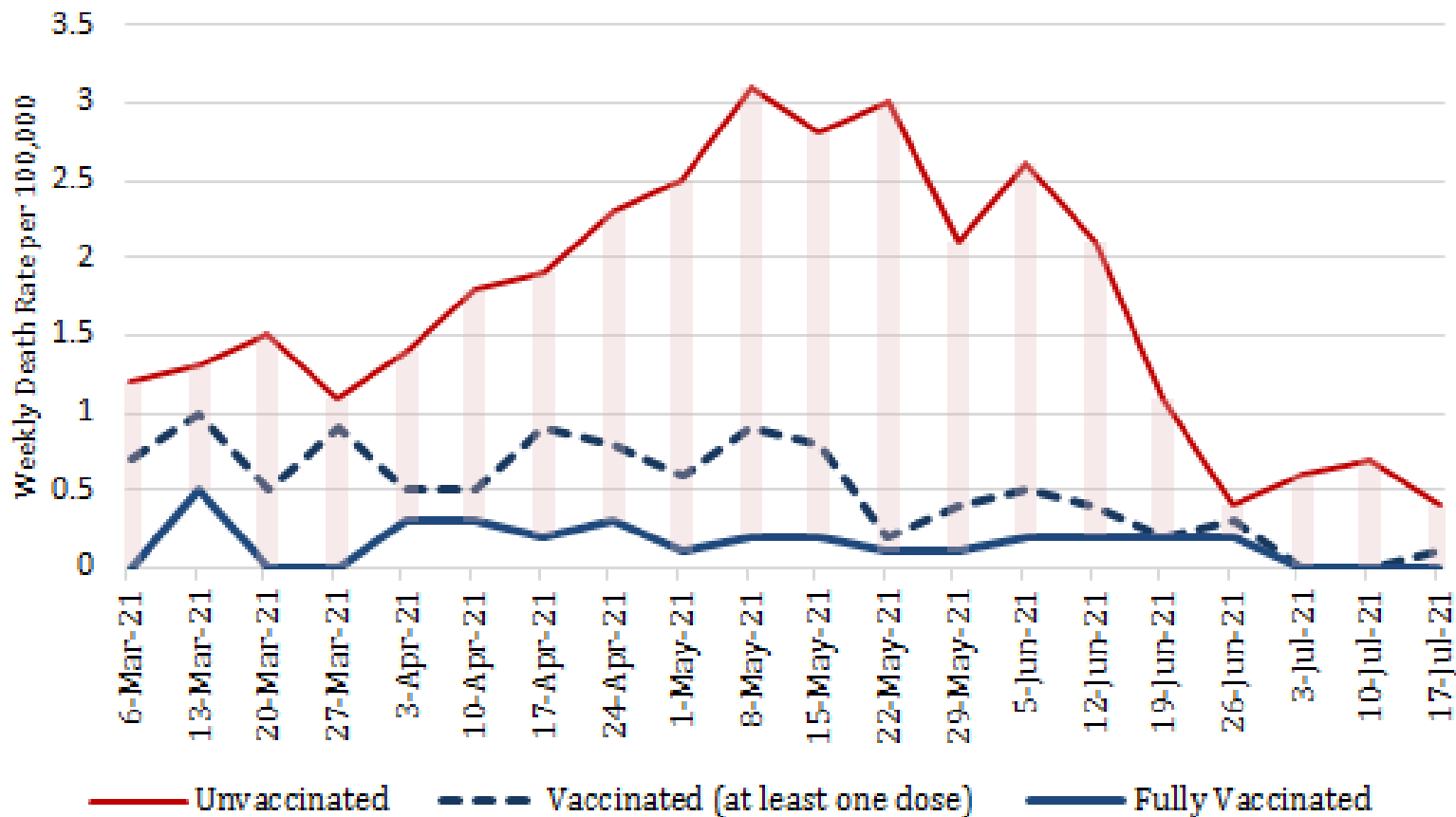


Notes: Includes cases among Chicago residents reported into the Illinois Electronic Disease Surveillance System (I-NEDSS) with date of specimen collection 1/1/21-7/17/21, pulled 7/20/2021. Vaccination status obtained from the Illinois Comprehensive Automated Immunization Registry (I-CARE) registry; Vaccinated defined as having had at least one dose **prior to** a positive test. Rate for vaccinated calculated as total hospitalized cases divided by cumulative vaccinated at the end of each week, multiplied by 100,000. Rate for unvaccinated calculated as total hospitalized cases divided by total population minus cumulative vaccinated at the end of each week, multiplied by 100,000.

In Chicago, **unvaccinated people** remain much more likely to die from COVID-19 than **partially** or **fully vaccinated people**

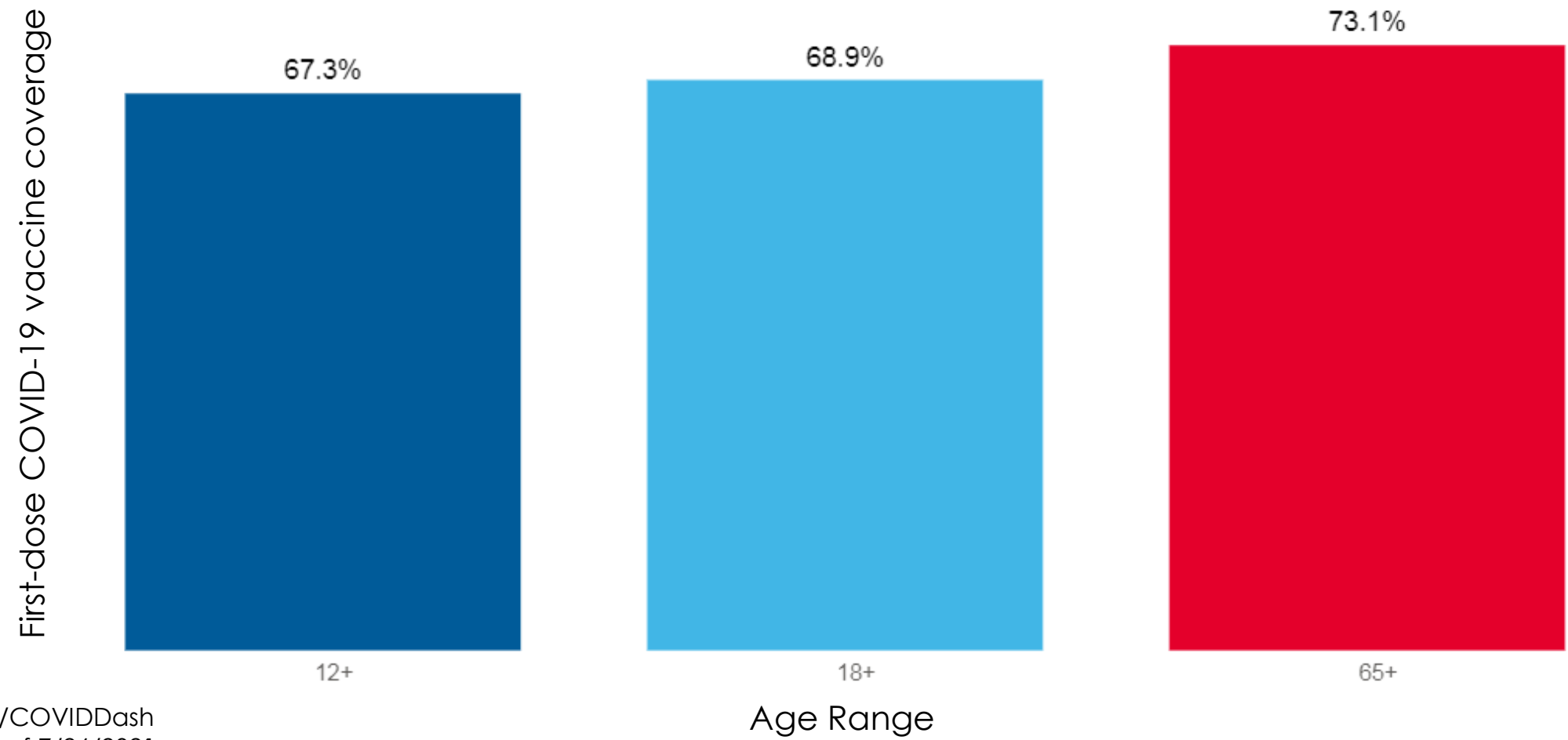


Weekly Chicago Death Rate per 100,000 by Vaccination Status



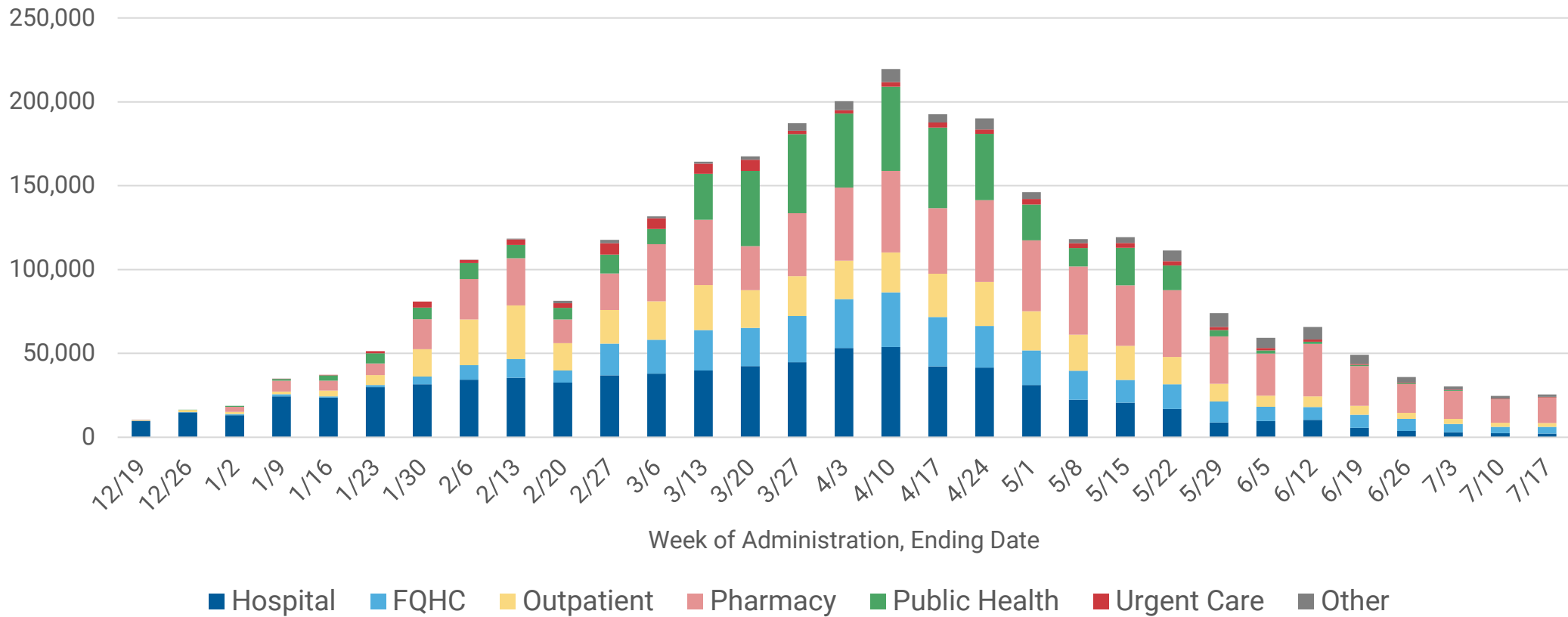
Notes: Includes cases among Chicago residents reported into the Illinois Electronic Disease Surveillance System (I-NEDSS) with date of specimen collection 1/1/21-7/17/21, pulled 7/20/2021. Vaccination status obtained from the Illinois Comprehensive Automated Immunization Registry (I-CARE) registry; Vaccinated defined as having had at least one dose **prior to** a positive test. Rate for vaccinated calculated as total cases known to have died divided by cumulative vaccinated at the end of each week, multiplied by 100,000. Rate for unvaccinated calculated as total cases known to have died divided by total population minus cumulative vaccinated at the end of each week, multiplied by 100,000.

★ **Two-thirds** of eligible Chicagoans have received at least the 1st dose of COVID-19 vaccine; 60.2% are fully vaccinated





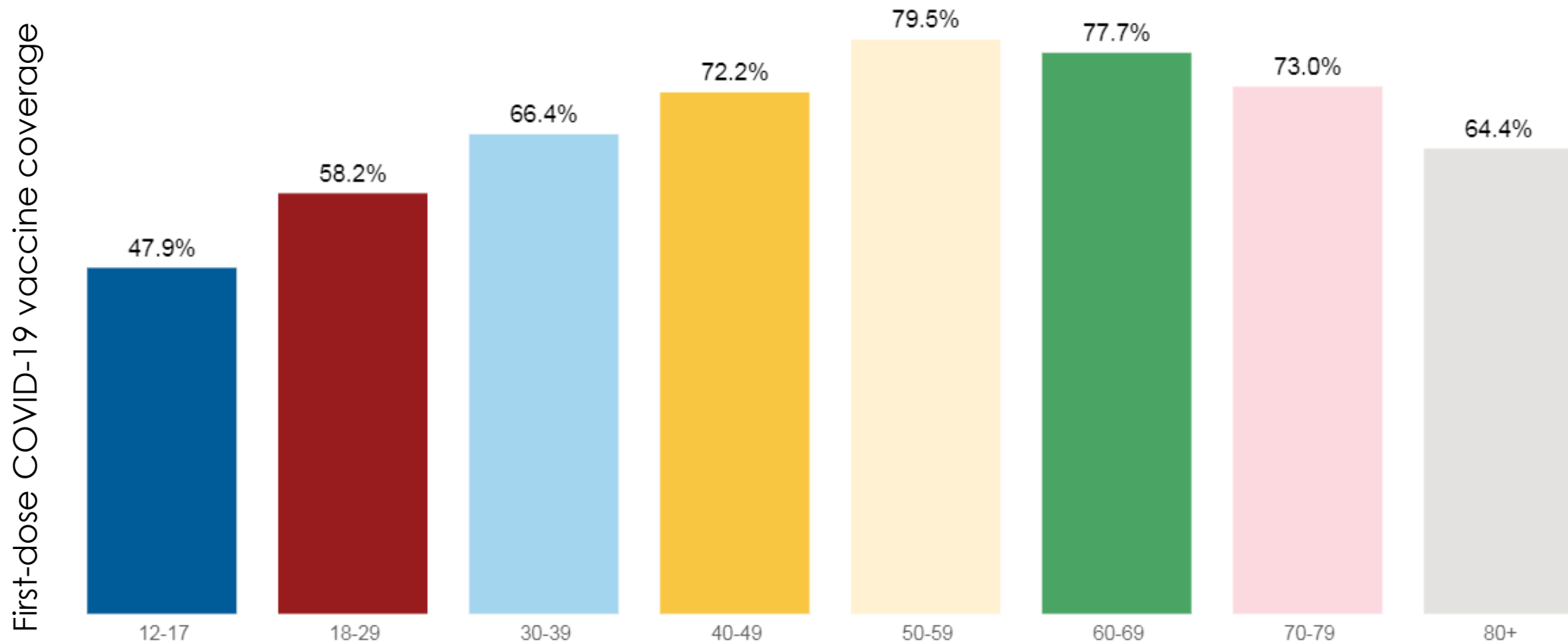
Vaccination rate in Chicago has stabilized over the past few weeks



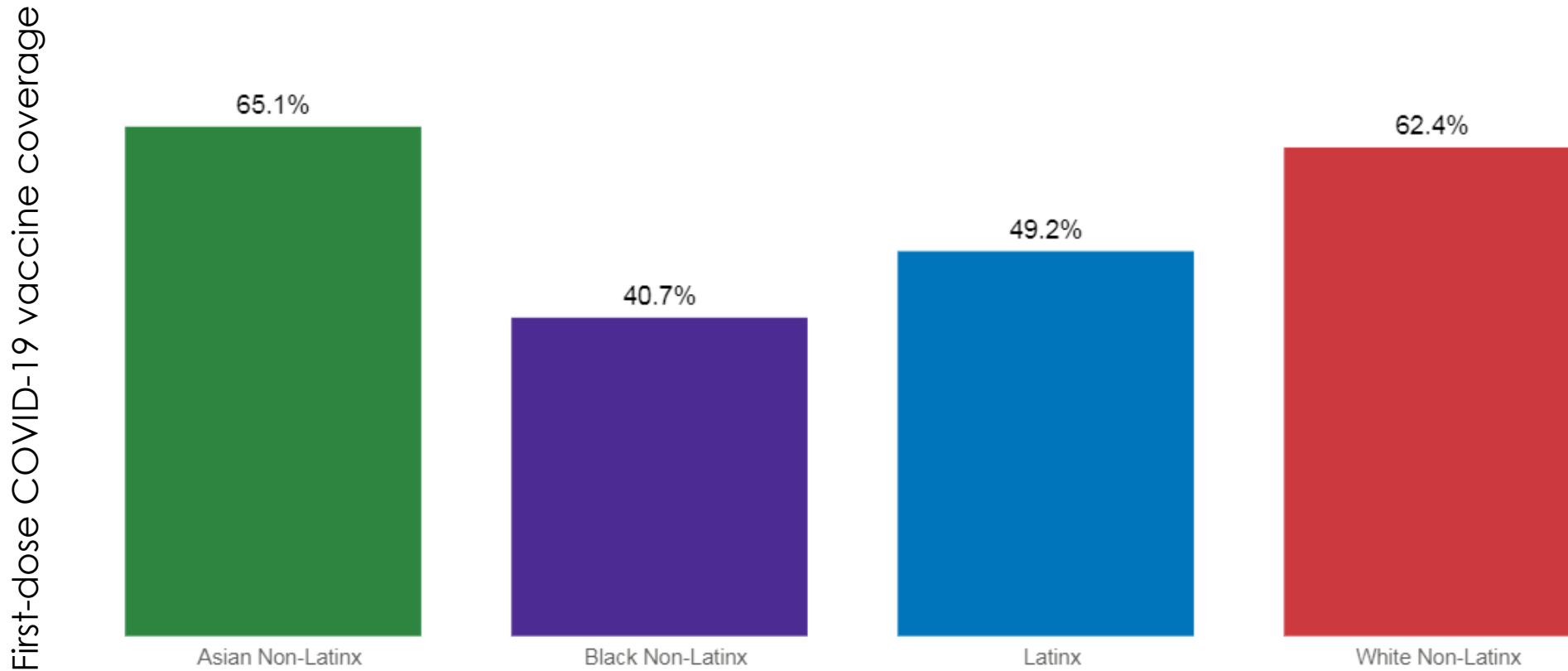
Data reported through 7/21/21. Doses administered by Chicago providers.



Continuing to focus on vaccinating adolescents and seniors in Chicago



Continuing to focus on vaccinating **Black Non-Latinx** and **Latinx** Chicagoans



The background of the entire image is a photograph of a large outdoor festival in Chicago. In the foreground, a massive, dense crowd of people is seen from an elevated perspective, filling a large open area. In the background, the Chicago skyline is visible under a bright, slightly overcast sky, with several prominent skyscrapers like the Willis Tower. The text is overlaid on this scene in three horizontal bars.

EVERYTHING YOU NEED TO KNOW ABOUT

LOLLAPALOOZA

AND HOW TO ATTEND SAFELY

VAX*CHI*NATION
JOIN THE MOVEMENT

TO ENTER, YOU MUST:

- BRING A PRINTED COPY OF YOUR VACCINE CARD, VACCINE RECORD, OR A NEGATIVE COVID-19 TEST (TAKEN WITHIN 72 HOURS)
- ACTIVATE YOUR FESTIVAL WRISTBAND AND REGISTER FOR CASHLESS
- IF YOU ARE UNVACCINATED, WEAR A MASK THROUGHOUT YOUR TIME ONSITE

ONLY CLEAR BAGS ARE ALLOWED. NO LIQUIDS ARE ALLOWED TO BE BROUGHT INTO LOLLAPALOOZA.

REMEMBER TO:

- **WASH YOUR HANDS FREQUENTLY OR USE A HAND SANITIZER CONTAINING AT LEAST 60% ALCOHOL**
- **LIMIT CONSUMPTION OF SUBSTANCES. CONSUMING ALCOHOL OR SUBSTANCES MAY MAKE YOU LESS LIKELY TO FOLLOW COVID-19 SAFETY MEASURES**

DO NOT ATTEND LOLLAPALOOZA IF:

- **YOU DEVELOP ANY SYMPTOMS OF COVID-19, EVEN IF YOU ARE FULLY VACCINATED**
- **YOU HAVE TESTED POSITIVE FOR COVID-19 IN THE LAST 14 DAYS**

★ Extending Hours, Doubling Appointment Capacity, and \$25 Visa gift cards for **Protect Chicago At Home**

- Everyone 12 and up is eligible to receive a vaccine and a gift card.
- Appointments can be booked now, and gift card distribution will begin August 2.
- Pfizer (12+) or Johnson & Johnson (18+)
- Up to 10 people can be vaccinated at a time
- Appointments are available Monday through Friday, 8:00 a.m. to 6:30 p.m.

[Chicago.gov/AtHome](https://chicago.gov/AtHome)

312-746-4835



Continued hyper-local ★ vaccination events

Swap-O-Rama - Back Of The Yards



Brickyard Mall - Belmont Cragin



Last weekend's events:

- Community Health Fair - Allergy & Asthma Network
- Chicago Humanities Festival
- GAGDC Vaccine Pop-Up
- Little Village Community Council Lavillita Park
- Mason Park Block Club
- 2021 Illinois Fatherhood Initiative Summer Celebration
- Brickyard Mall
- Christ Universal Temple
- Su Nueva Lavanderia
- Bread of Life MB Church
- The South Side Jazz Coalition
- Swap-O-rama Ashland Avenue

All events listed on [Chicago.gov/VaxCalendar](https://www.chicago.gov/VaxCalendar)

PROTECT
CHICAGO ★

PROTEGE A
CHICAGO ★