



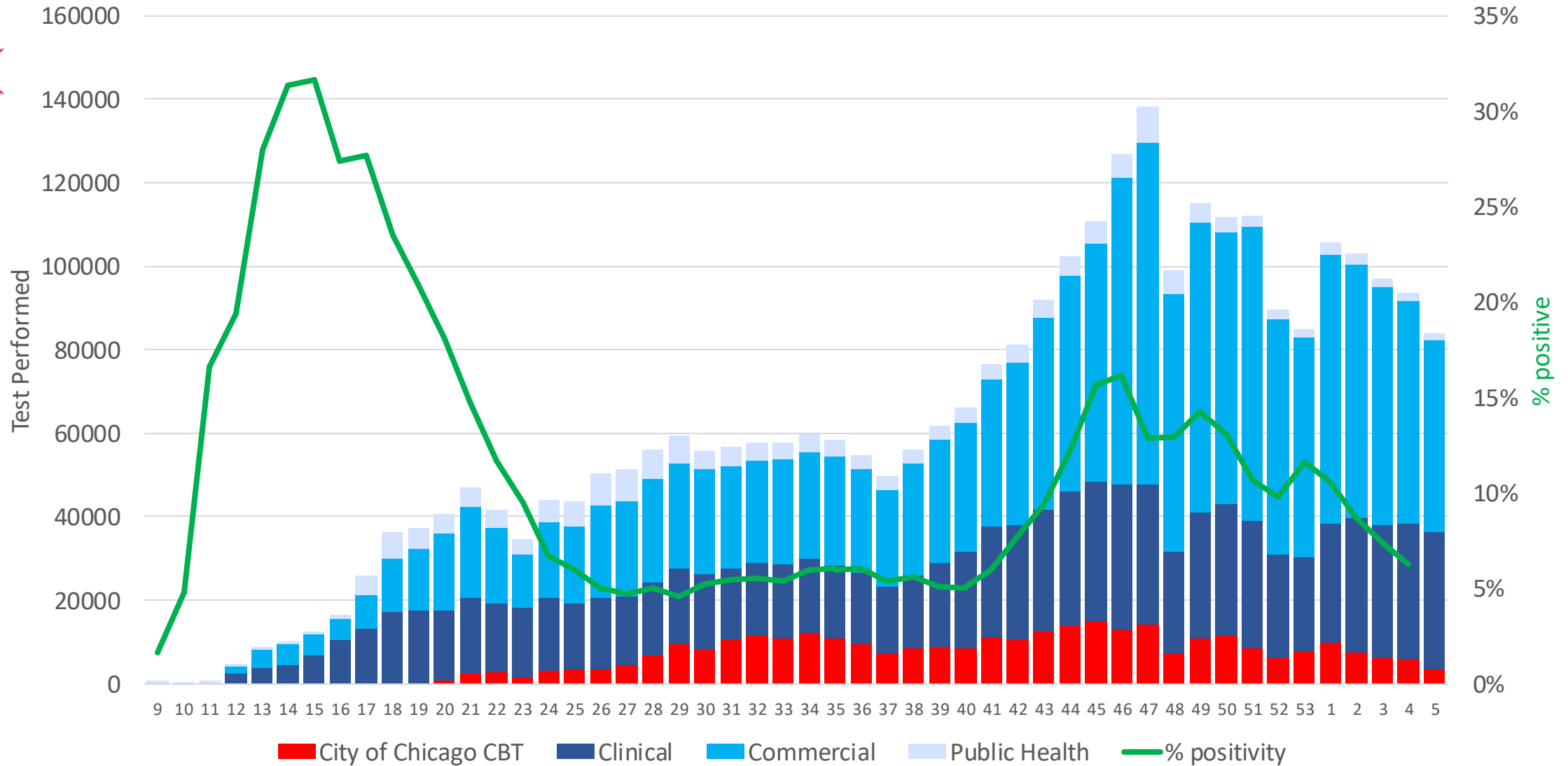
# **COVID-19 Response Bureau Testing and Laboratory-Based Surveillance**

**February 12, 2021**



**Every week, we track the volume of tests performed across the City, as well as what type of laboratory is performing those tests. While testing capacity remains high, demand has decreased in recent weeks. Testing demand across the City closely mirrors disease incidence, such that when fewer cases of COVID-19 are detected, fewer people seek COVID-19 testing.**

# Testing volume by reporting laboratories



CDPH CBT = Laboratory serving City of Chicago Community-Based Testing Sites

MMWR 1-4 = January  
 MMWR 49-53 = December  
 MMWR 45-48 = November  
 MMWR 41-44 = October  
 MMWR 36-40 = September

MMWR 32-36 = August  
 MMWR 27-31 = July  
 MMWR 23-27 = June  
 MMWR 18-23 = May  
 MMWR 14-18 = April



City of Chicago Community-Based Testing Sites (CBTS) represent just some of over 5,000 providers performing COVID-19 testing in Chicago. CBTS aim to serve the people who need it most, especially those underrepresented in testing from other clinical providers and those from demographic groups and geographic areas hardest hit by COVID-19.

**We closely monitor the demographics (e.g., age, race, ethnicity) of individuals using our community-based testing sites, and adjust our targeting as needed to reach the communities that need it most.**



## Volume of test by race and ethnicity of individuals using CDPH Community Based Testing Sites last week (January 31, 2020 – February 6, 2021)

