



# Protecting Chicago: Phase IV Re-Opening Metrics Update

February 20th, 2021

# Chicago COVID-19 Community Metrics, Phase IV, current status

	Risk level as of 2/19/2021	Very high risk	High risk	Moderate risk	Lower risk	Controlled transmission
<b>COVID cases diagnosed per day</b> <small>Chicago residents 7-day rolling daily average</small>	MODERATE	<b>800+</b> -or- 7+ consecutive days more than 15% higher than daily average one week prior	<b>400 - 799</b> -or- 5+ consecutive days more than 10% higher than daily average one week prior	200 - 399	20 – 199	<20
<b>COVID test positivity</b> <small>Chicago residents 7-day rolling daily average</small>	LOWER	<b>10%+</b> -or- 7+ consecutive days more than 15% higher than daily average one week prior	<b>6.6 - 9.9%</b> -or- 5+ consecutive days more than 10% higher than daily average one week prior	5.0 - 6.5%	2 - 4.9%	<2%
<b>Emergency dept visits for COVID-like illness</b> <small>Chicago hospitals 7-day rolling daily average</small>	LOWER	<b>90+</b> -or- 7+ consecutive days more than 15% higher than daily average one week prior	<b>80-89</b> -or- 5+ consecutive days more than 10% higher than daily average one week prior	60 - 79	20 - 59	<20
<b>ICU beds occupied by COVID patients</b> <small>Chicago hospitals 7-day rolling daily average</small>	MODERATE	<b>400+</b> -or- <20% overall ICU bed availability	<b>300 - 399</b> -or- <22% overall ICU bed availability	100 - 299	20 - 99	<20



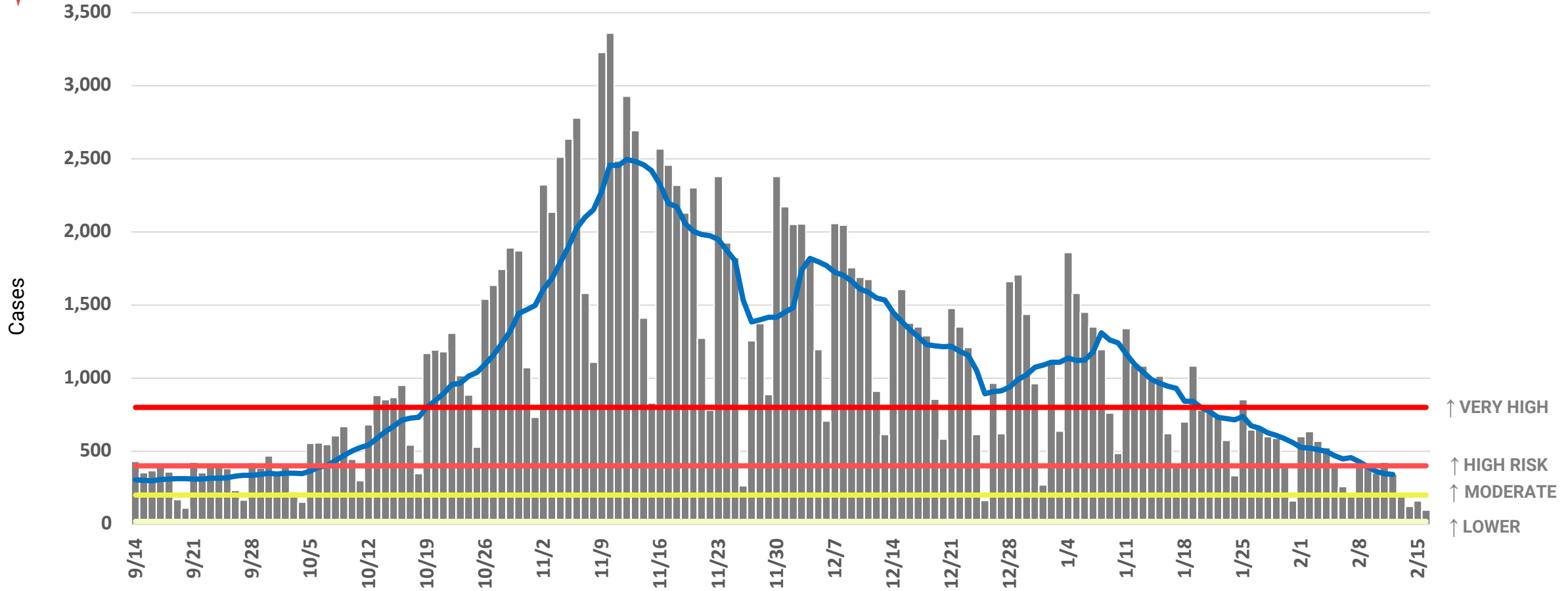
# COVID-19 Cases

# COVID-19 case incidence risk level is moderate.

Date	Incident case count, 7DRA	Consecutive days with 10%+ change	Consecutive days with 15%+ change	Risk level
2/15/2021	301	0	0	MODERATE



COVID-19 cases, daily counts and rolling 7-day average, specimen date

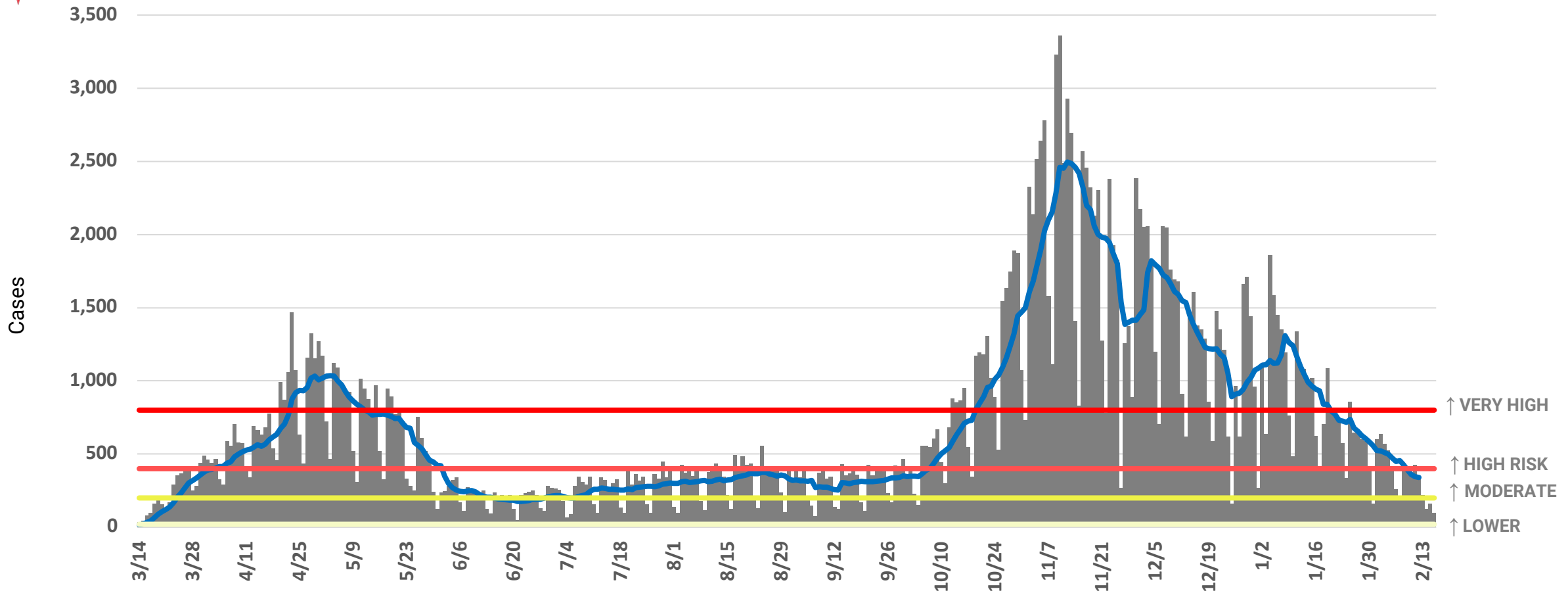


Daily COVID-19 cases with known specimen report date. Case is defined as positive result on PCR or antigen test. This case definition was applied to the entire epidemic beginning on 2/8/2021 therefore these results are different from results reported prior. Source: INEDSS.

# COVID-19 case incidence risk level is moderate.



COVID-19 cases, daily counts and rolling 7-day average, specimen date



Daily COVID-19 cases with known specimen report date. Case is defined as positive result on PCR or antigen test. This case definition was applied to the entire epidemic beginning on 2/8/2021 therefore these results are different from results reported prior. Source: INEDSS.

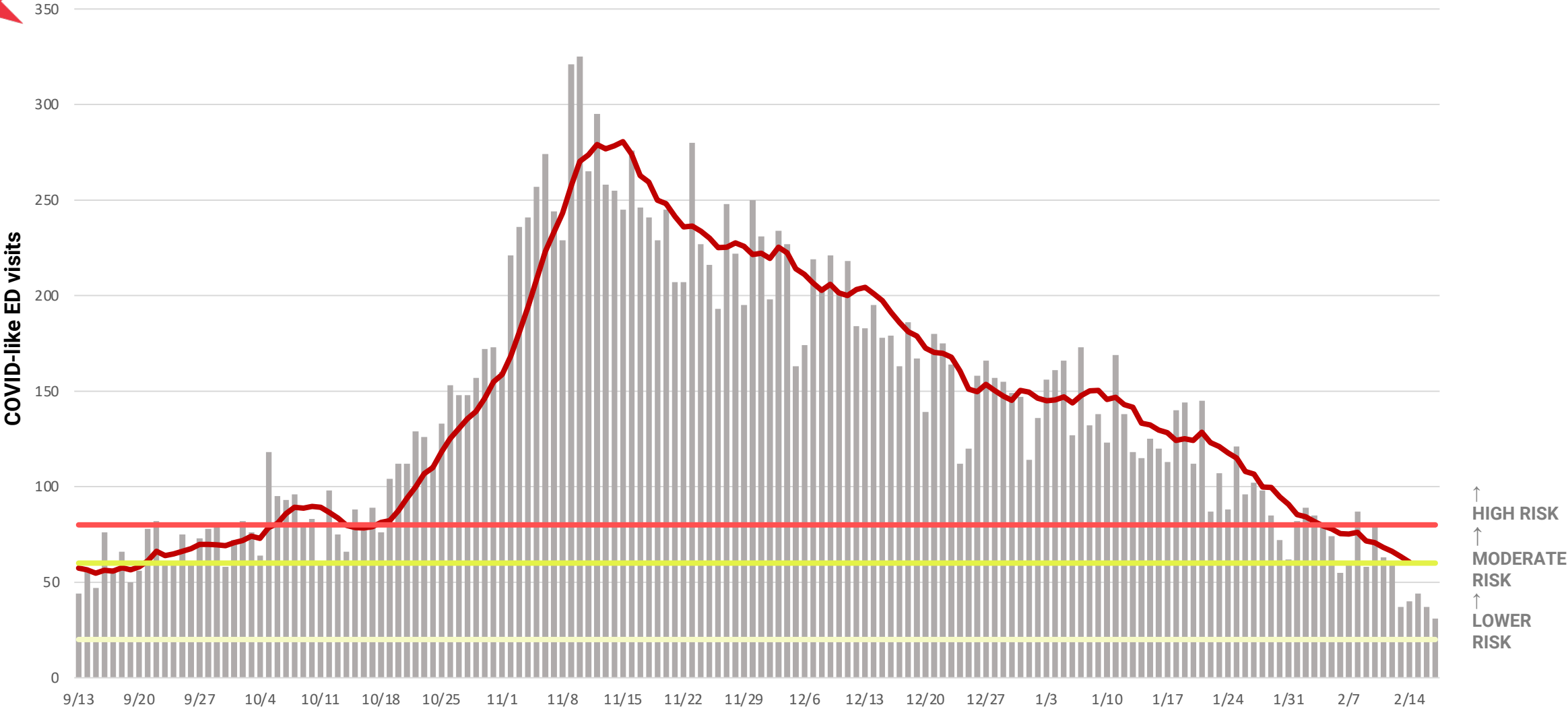


# Emergency Department Visits

# ED visits for COVID-like illness

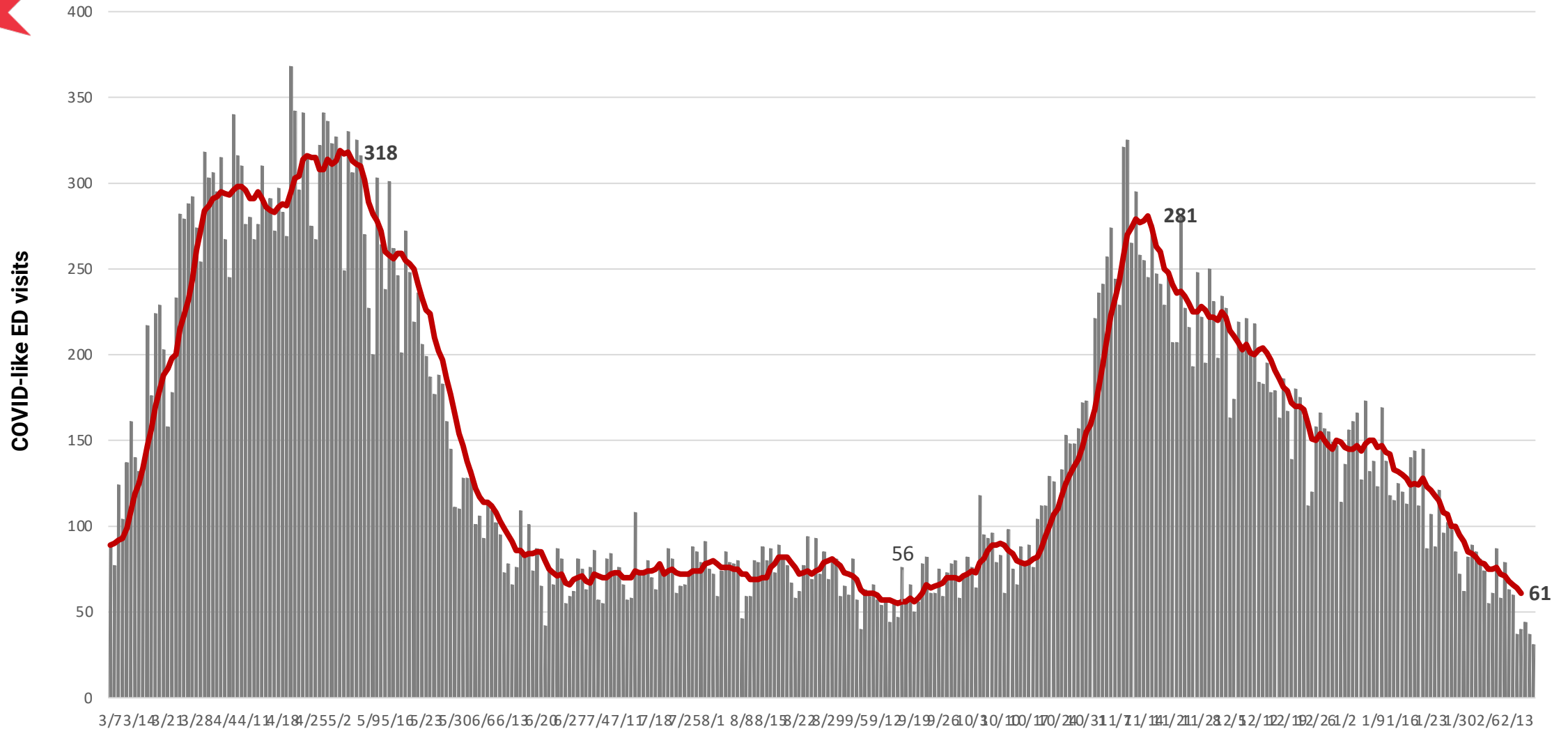
## Risk level is moderate

Date	Covid-like Illness ED visit, 7DRA	Consecutive days with 10%+ change	Consecutive days with 15%+ change	Risk level
2/16/2021	51	0	0	LOWER



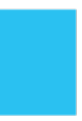
Count of all emergency department visits reported with COVID-like symptoms among Chicago residents.  
 Data Source: Illinois Hospital Emergency Departments reporting to CDPH through the National Syndromic Surveillance Project.

# ED visits for COVID-like illness reached the highest peak in early May and is currently declining



Count of all emergency department visits reported with COVID-like symptoms among Chicago residents.  
Data Source: Illinois Hospital Emergency Departments reporting to CDPH through the National Syndromic Surveillance Project.





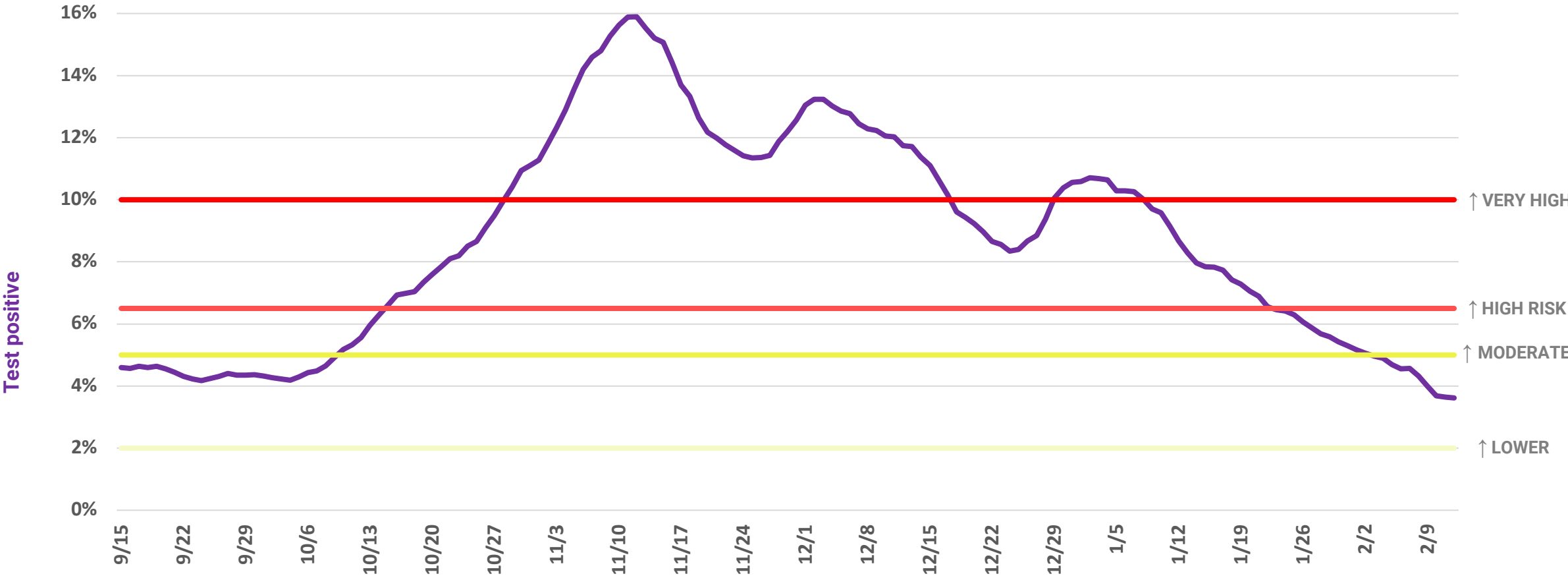
# Test Positivity

# Test positivity risk level is lower.

Date	Test positivity, 7DRA	Consecutive days with 10%+ change	Consecutive days with 15%+ change	Risk level
2/15/2021	3.5%	0	0	LOWER



COVID-19 tests, 7-day rolling average for test positive (%)

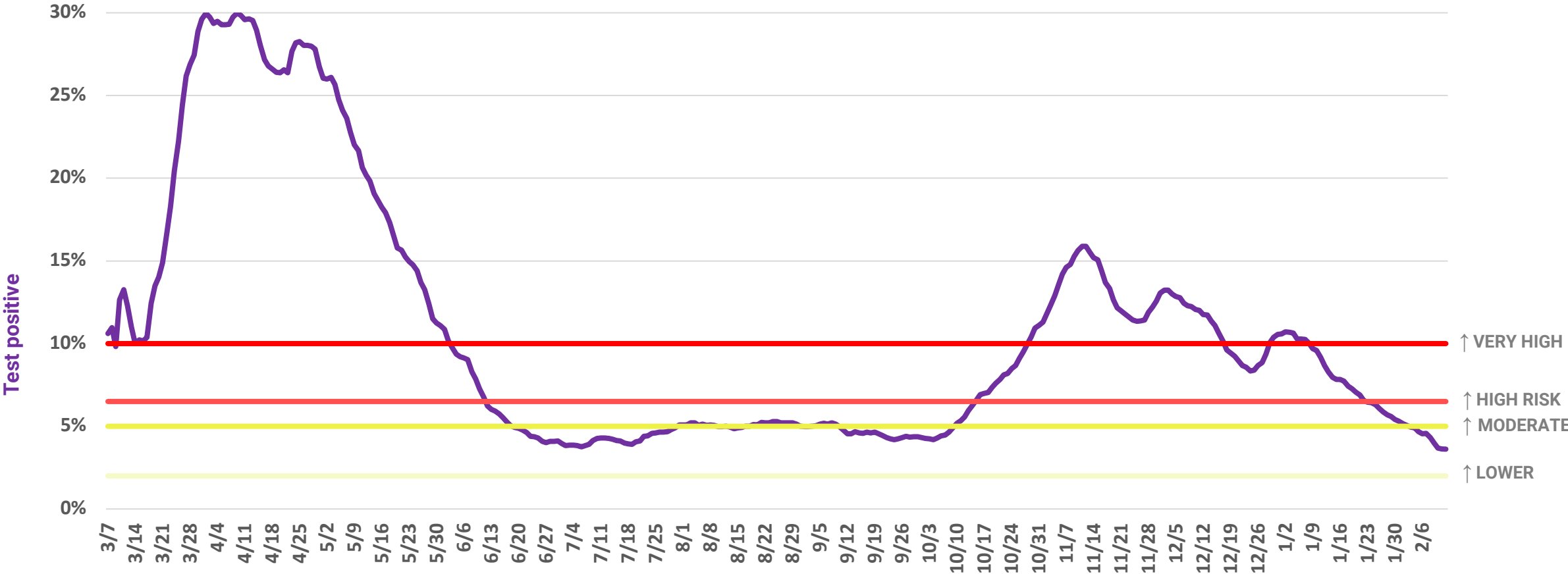


Test positivity is the number of positive tests divided by all tests performed. For the purposes of public reporting, the definition of 'tests' was expanded on 2/8/2021 to include antigen tests in addition to PCR tests. (Previous reports only described PCR tests). The new definition is applied to testing performed at any point during the epidemic. Source: INEDSS.

# Test positivity varies over time.



COVID-19 tests, 7-day rolling average for test positive (%)



Test positivity is the number of positive tests divided by all tests performed. For the purposes of public reporting, the definition of ‘tests’ was expanded on 2/8/2021 to include antigen tests in addition to PCR tests. (Previous reports only described PCR tests). The new definition is applied to testing performed at any point during the epidemic. Source: INEDSS.



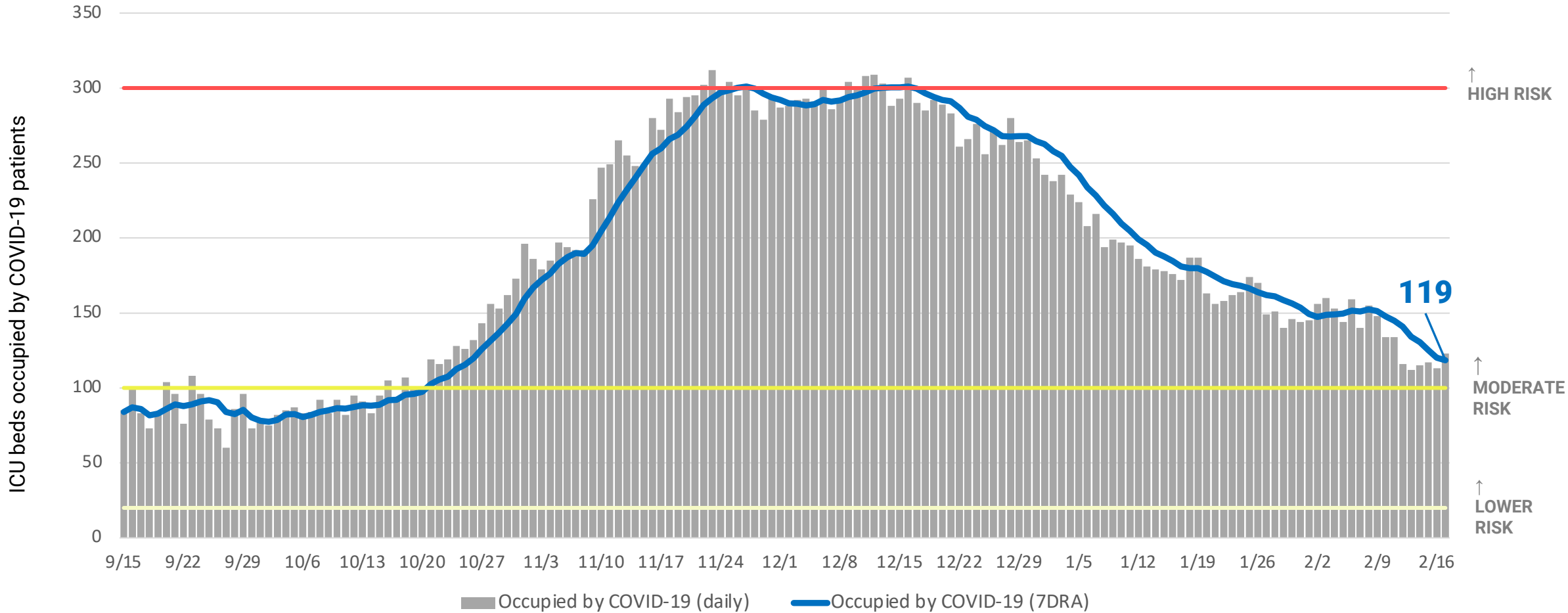
# Hospital System Capacity

# ICU availability and occupancy from COVID-19



ICU beds occupied by COVID-19 patients, daily counts and 7 day average, daily occupancy census (09/15/2020 - 02/17/2021)

Date	ICU Beds Occupied by COVID-19, 7DRA	ICU Bed Availability, 7DRA	Risk level
2/17/2021	119	28%	MODERATE



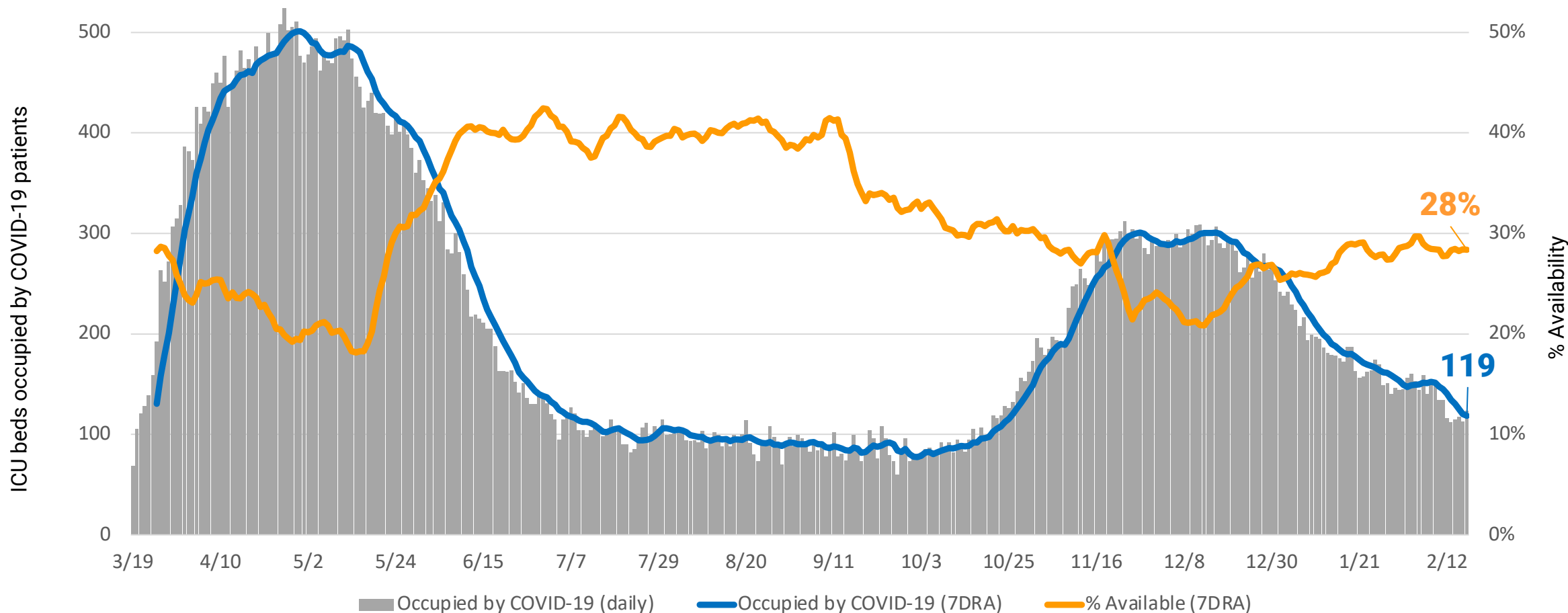
Includes all Chicago hospitals. Hospitals report daily to CDPH via EMResource, beginning March 19. ICU bed count includes all adult and pediatric ICU beds in Chicago hospitals. Includes Chicago and non-Chicago residents. Includes confirmed and suspected COVID-19 cases.

# ICU availability and occupancy from COVID-19

Date	ICU Beds Occupied by COVID-19, 7DRA	ICU Bed Availability, 7DRA	Risk level
2/17/2021	119	28%	MODERATE



ICU beds available and occupied by COVID-19 patients, daily counts and 7 day average, daily occupancy census (03/13/2020 - 02/17/2021)



Includes all Chicago hospitals. Hospitals report daily to CDPH via EMResource, beginning March 19. ICU bed count includes all adult and pediatric ICU beds in Chicago hospitals. Includes Chicago and non-Chicago residents. Includes confirmed and suspected COVID-19 cases.