



COMMITTEE ON DESIGN

Department of Planning and Development

1200 S. DuSable Lake Shore Drive

Near South Side / 4th Ward / Ald. King

Shedd Aquarium & Chicago Park District

Valerio Dewalt Train Associates

Site Design Group, Ltd.

Daspin & Aument, LLP

February 9, 2022

PRESENTERS



Meghan Curran
*Chief Marketing &
Experience Officer*
Shedd Aquarium

Joe Valerio
Principal
Valerio Dewalt Train

Bradley McCauley
Managing Principal
Site Design Group, Ltd.

Bridget O'Keefe
Partner & Zoning Attorney
Daspin & Aument



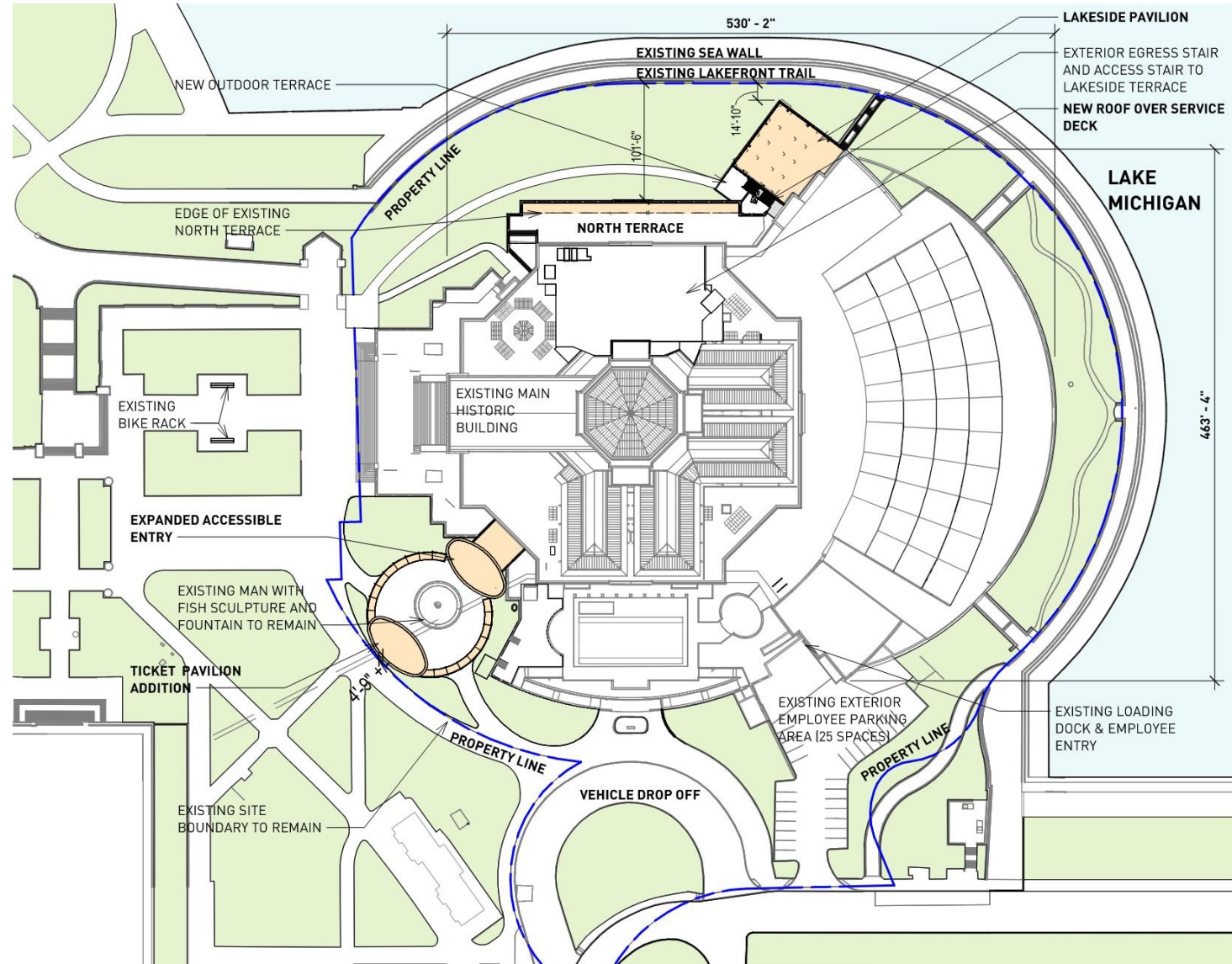
MAIN GOALS

DESIGN EXCELLENCE + FUNCTION, ACCESSIBILITY, PRESERVATION, PUBLIC SPACE

- Improve experience, entry, safety and accessibility based on universal design and visitor comfort.
- Increase circulation and capacity to accommodate up to 2.3M guests.
- Update animal habitats to meet modern standards of animal care, with emphasis on the original historic galleries.
- Elevate learning spaces into the main aquarium experience.
- Continued stewardship and respect for the historic building and surrounding park land.
- Restore unobstructed access to Shedd's original promenade, green space and gardens and bolster existing commitment to a sustainable landscape.

★ EXTERIOR MODIFICATIONS

- Enhance the Existing Accessible Entrance
- Rebuild the North Terrace
- Enclose the Lakeside Terrace





DESIGN NARRATIVE SUMMARY

- A circular trellis defines an arrival location that will celebrate the commissioned fountain, *Man with Fish*, while anchoring an entry and ticket pavilion which are a study in minimalism and float effortlessly above the plaza.
- Sensitive renovation of cherished historic building which is listed on the National Register of Historic Places. Project designed to be compliant with the Secretary of Interior's Standards for Rehabilitation to maintain the opportunity to secure State funding in the future.
- Arrival experience is enhanced by a new landscaping plan that invites the visitors to play, rest and engage in the new sustainable gardens.
- Replacement of deteriorating North Terrace (using stone salvaged from the existing building,) includes adding 10' to the width of the terrace and construction of a basement to house life support equipment required for the improved large animal habitats.
- New pavilion on the Lakeside Terrace that includes a roof deck at the same level as the North Terrace. The height and materials are intended to make it unobtrusive and will not challenge the primacy of the historic building.

COMMUNITY COMMENTS

Completed Meetings



- Chicago Public Schools (multiple, last on 10/22/21)



- Landmarks Illinois (1/19/22)



- The State Historic Preservation Office (10/25/21)



- Preservation Chicago (1/19/22)



- Mayor's Office for People with Disabilities (multiple, last on 11/3/21)



- Friends of the Park (1/20/22)



- Chicago Park District (multiple, last on 12/14/21)



- 4th Ward Advisory Council (1/24/22)

Future Meetings Scheduled



Near South
Planning Board
Catalyst for Growth

- Near South Planning Board (2/1/22)



- Grant Park Advisory Council (2/16/22)



CHICAGO PARK DISTRICT COMMENTS

- CPD welcomes the thoughtful interior renovation that will enable the Shedd to remain an important cultural institution, educational resource and dedicated animal welfare partner for decades to come.
- CPD appreciates the smaller scale entry and ticketing pavilions which allow open space between them, provide practical outdoor spaces for visitors (especially those with children) to circulate while waiting for entry, and are positioned southwest so as not to distract from the main and arguably more important façade of the Shedd.
- CPD prefers to minimize the amount of enclosed buildings added so as not to lose park space and to encourage visitors to explore the outdoors.
- By minimizing buildings and minimizing glass, we protect migrating birds as this building and the entire lakefront reside within the Mississippi flyway.
- Outdoor open space gardens surrounding Man with Fish sculpture will enhance open space and engage patrons with an educational experience through various native habitats with rain gardens, nature play or monarch gardens.
- New pedestrian 8' wide path from the plaza area as well as more usable outdoor space a welcome addition.
- Terrace repair and expansion a great addition, along with lakeside pavilion that will expand dining and take advantage of lake views.
- Further discussion needed on additional bike parking outside of Shedd lease line; CPD needs to review that space internally in more detail.
- Further discussion needed on tree removals and replacement; coordinate with CPD natural resources staff.



COMMUNITY COMMENTS

- Retain primary focus on historic West temple front entrance and facade, agreed with size, scale and height of all new additions, liked two building solution but SHPO discussed making entry and ticket pavilions smaller and pushing to east.
- Understand need for replacement of North Terrace and support design of Lakeside Pavilion. Can Lakefront Pavilion be reduced in scale or lowered in height to not impact Oceanarium design.
- Support new public space with an accessible public route to overlook patio, pathway to north lawn and landscape at the new entry pavilions.
- Approve native planting and heritage trees in all enhanced landscape areas. Sought confirmation that all landscaped areas around the Shedd will be open and accessible to the public.
- Will touchless ticketing reduce lines? How will pedestrians access Museum Campus? Amount of bicycle parking, and access to charging stations?



COMMUNITY COMMENTS (continued)

- Questions about stormwater management, landscape planting plan and ensuring prevention of bird strikes.
- Desire to collaborate on signage continuity across Grant Park and Museum Campus
- Proposed materials appropriately align and honor the historic building, with exception questioning the use of wood as potentially too casual.
- General questions about program and benefits such as:
 - Possible inclusion of temporary or permanent Public Art.
 - Contracting, Job/Internship Opportunities & Collaboration with Public Schools.
 - Proposed Eco-Sites in Neighborhoods.
 - Leveraging new exhibits to heighten awareness of conservation issues such as plastic pollution.

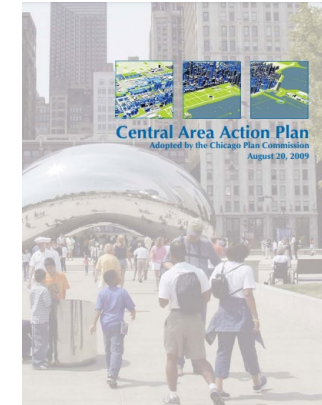
★ PLANNING + DESIGN GUIDELINES



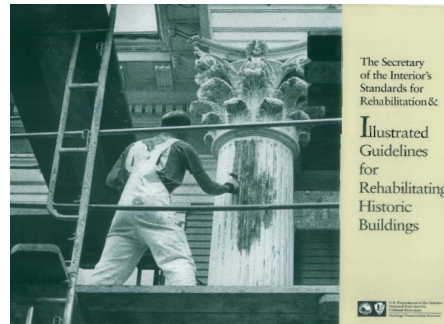
Design Excellence Principles
City of Chicago Department of Planning and Development, September 2020



Grant Park Framework Plan
Chicago Park District, Grant Park Steering Committee, January 2002



Chicago Central Area Action Plan
City of Chicago Department of Planning and Development, August 2009



Secretary of Interior's Standards for Rehabilitation
US Department of the Interior, 1997



Central Area Plan
City of Chicago Department of Planning and Development, May 2003



Owner's Representative /
Project Manager



Architect



Landscape Architect



Civil Engineer



Exhibit Designer



Circulation Consultant



Historic Preservation Consultant



Accessibility Consultant



Structural Engineer



MEPFP Engineer



Life Support Systems
Engineer



Transformative Exhibit
Consultant



DEI Consultant



Multicultural Visitation &
Communication Consultant

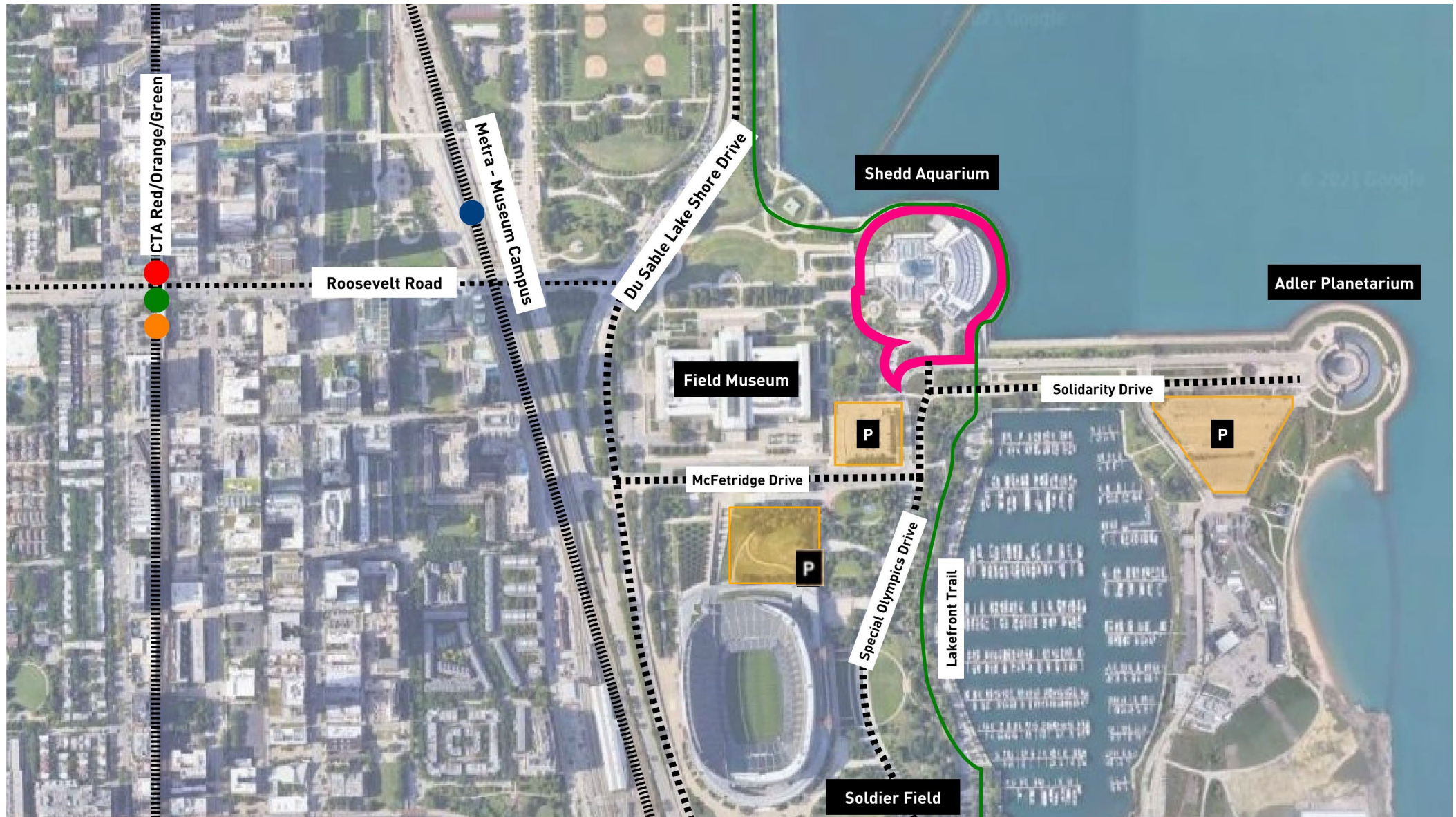


Multicultural Experience &
Communication Consultant

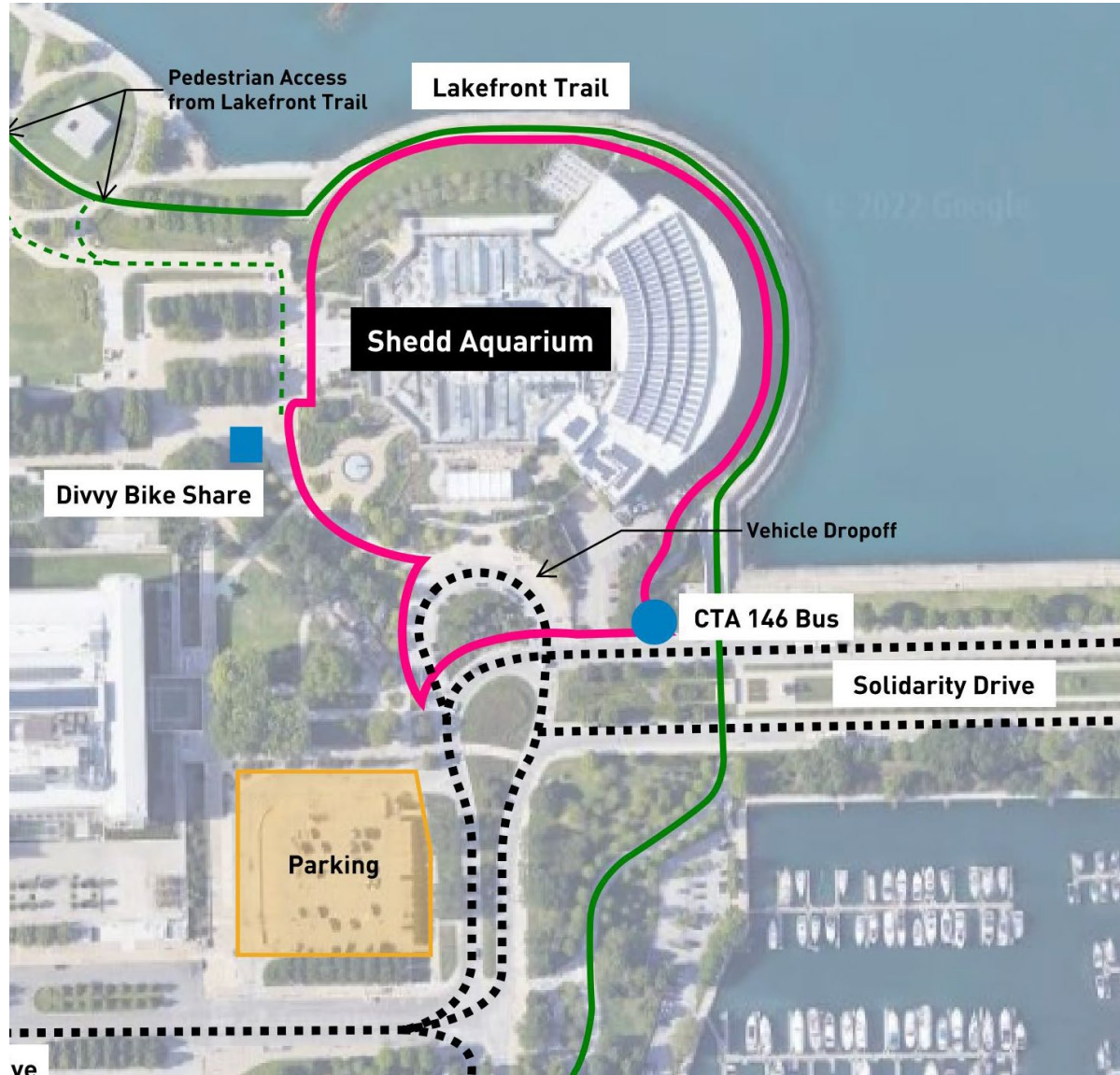


Zoning Attorney

Project Partners and Consultants

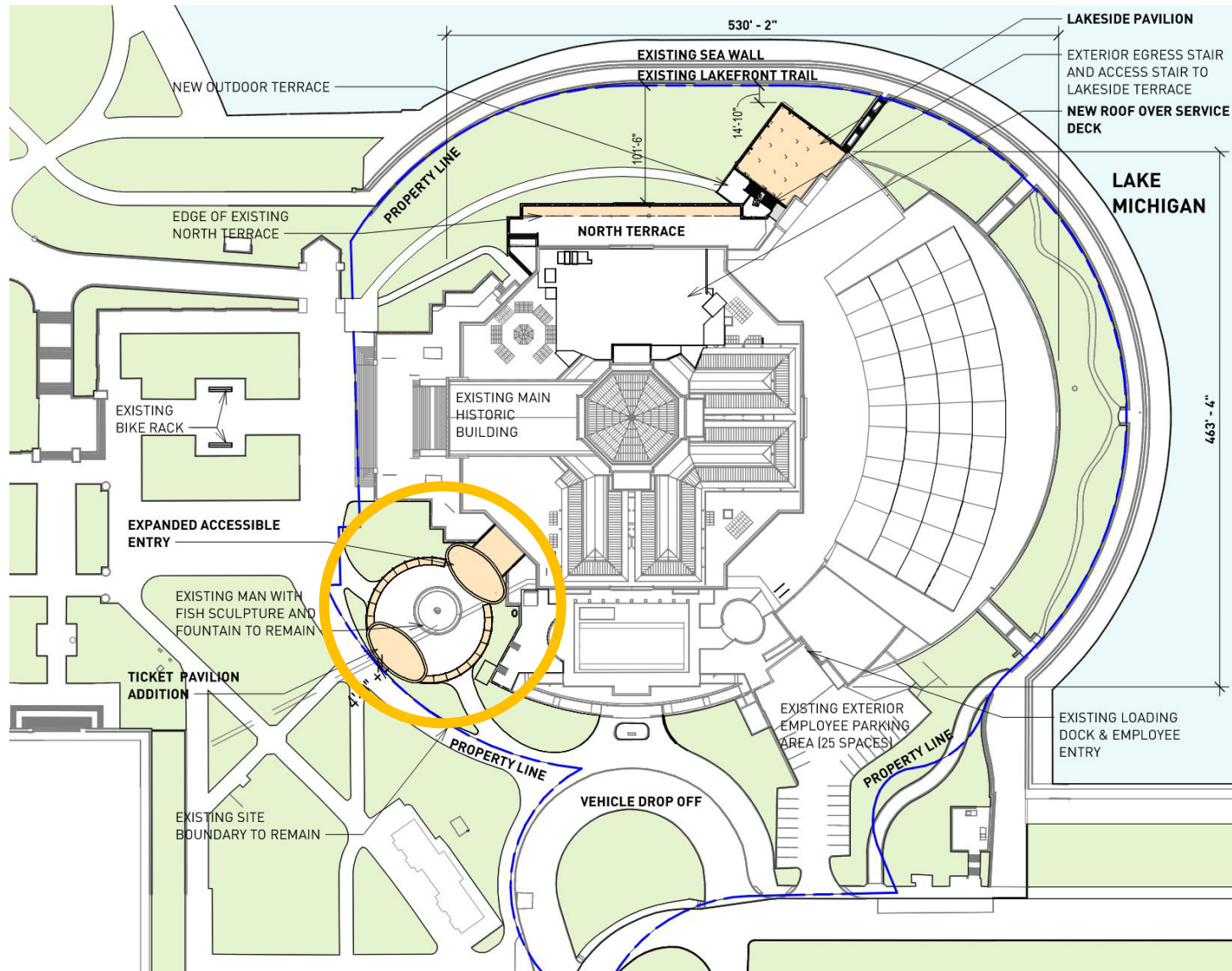


Site Context





Adjacent Site Context



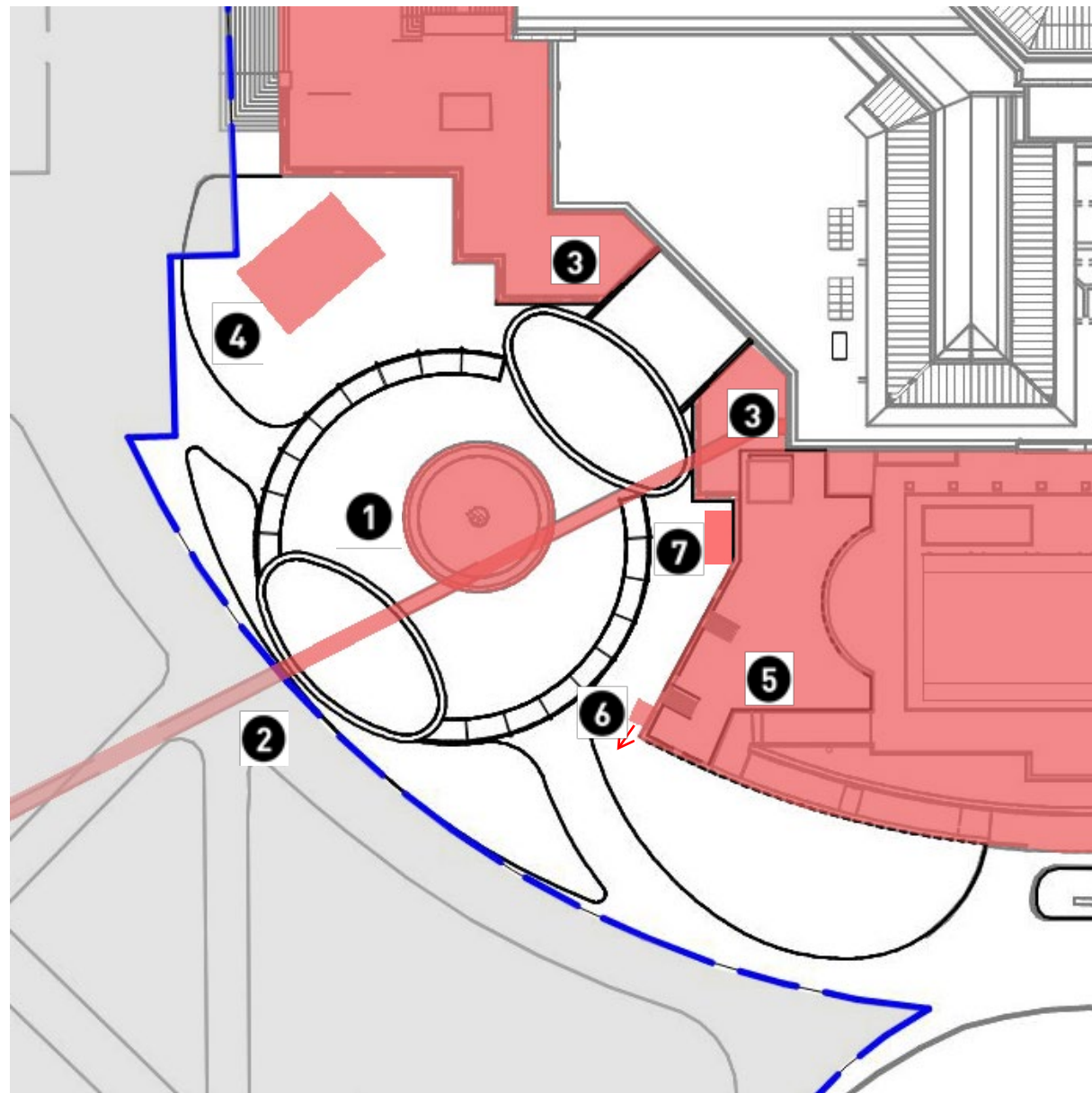


Existing Pedestrian Approach



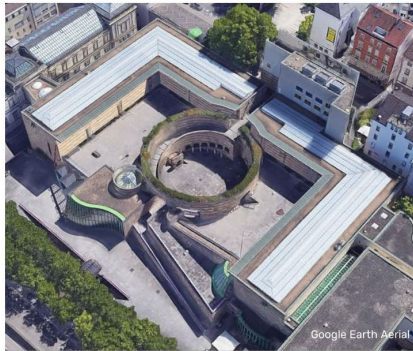
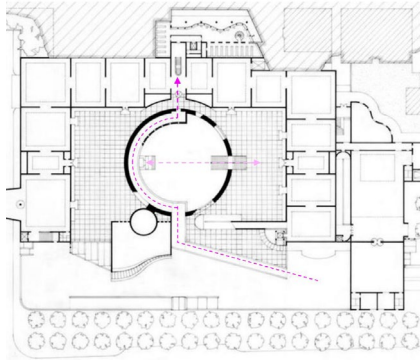
Site Constraints

- ① Man with Fish Sculpture
- ② Underground Tunnel to Field Museum
- ③ Existing Historic Terraces
- ④ Underground Detention
- ⑤ Existing Wild Reef Building
- ⑥ Wild Reef Egress Plan
- ⑦ Existing Utilities

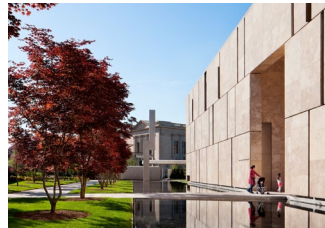
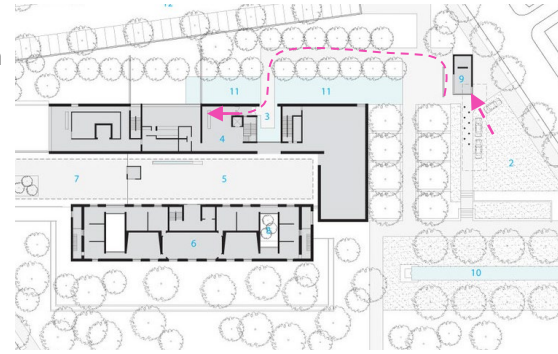




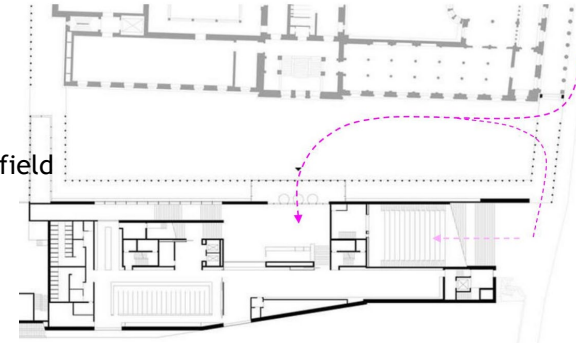
Staatsgalerie
Stuttgart
James Stirling



Barnes Foundation
Philadelphia
Tod Williams Billie
Tsien Architect



James Simon
Gallery
Berlin
David Chipperfield



Precedent Projects



Historic Georgia Marble

Existing windows to match historic intent; To remain

Accessible Entry doors added in 2000 renovation to be removed

Existing Opening in historic façade to be reused

Existing stone wall at entry to remain

Replacement (not marble) balustrades added in 2000 renovation

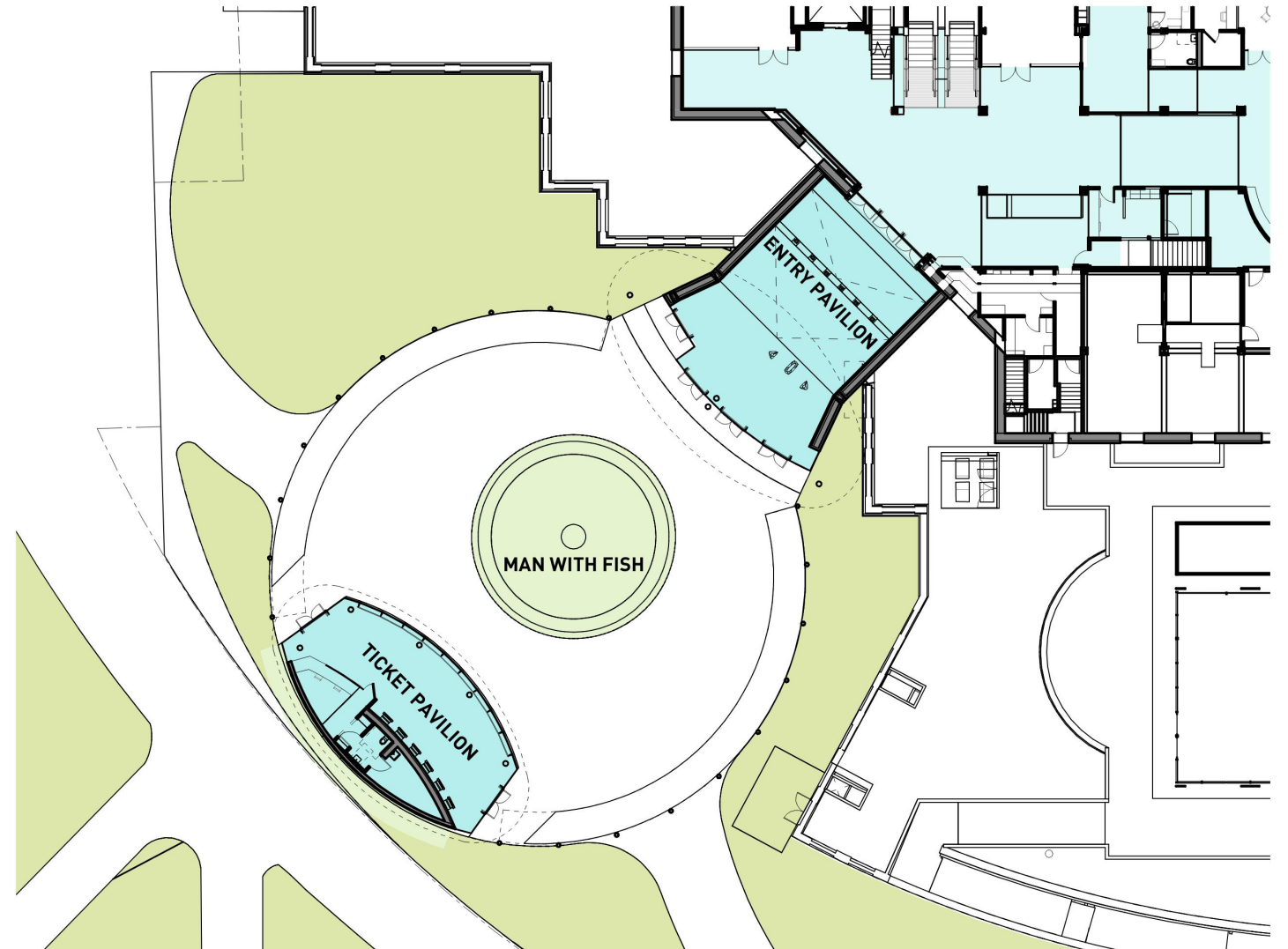
Existing railing adjacent to new pavilion to be removed; Georgia Marble to be salvaged and reused

Existing Site Conditions at Accessible Entry





1 in 5 user groups has someone who needs mobility assistance





Entry Pavilion - Aerial View from Southwest



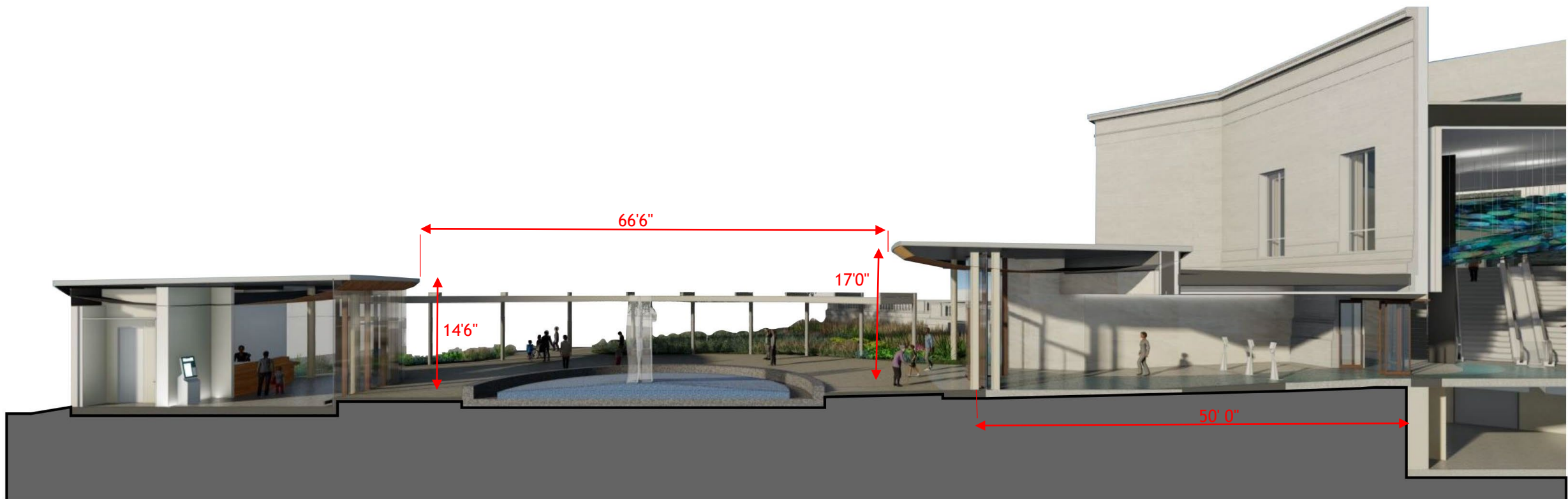
Entry Pavilion - View from West



Entry Pavilion



Entry Pavilion - View within Ring



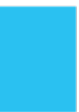
Ticket Pavilion

Entry Pavilion

Entry Pavilion - Section Perspective



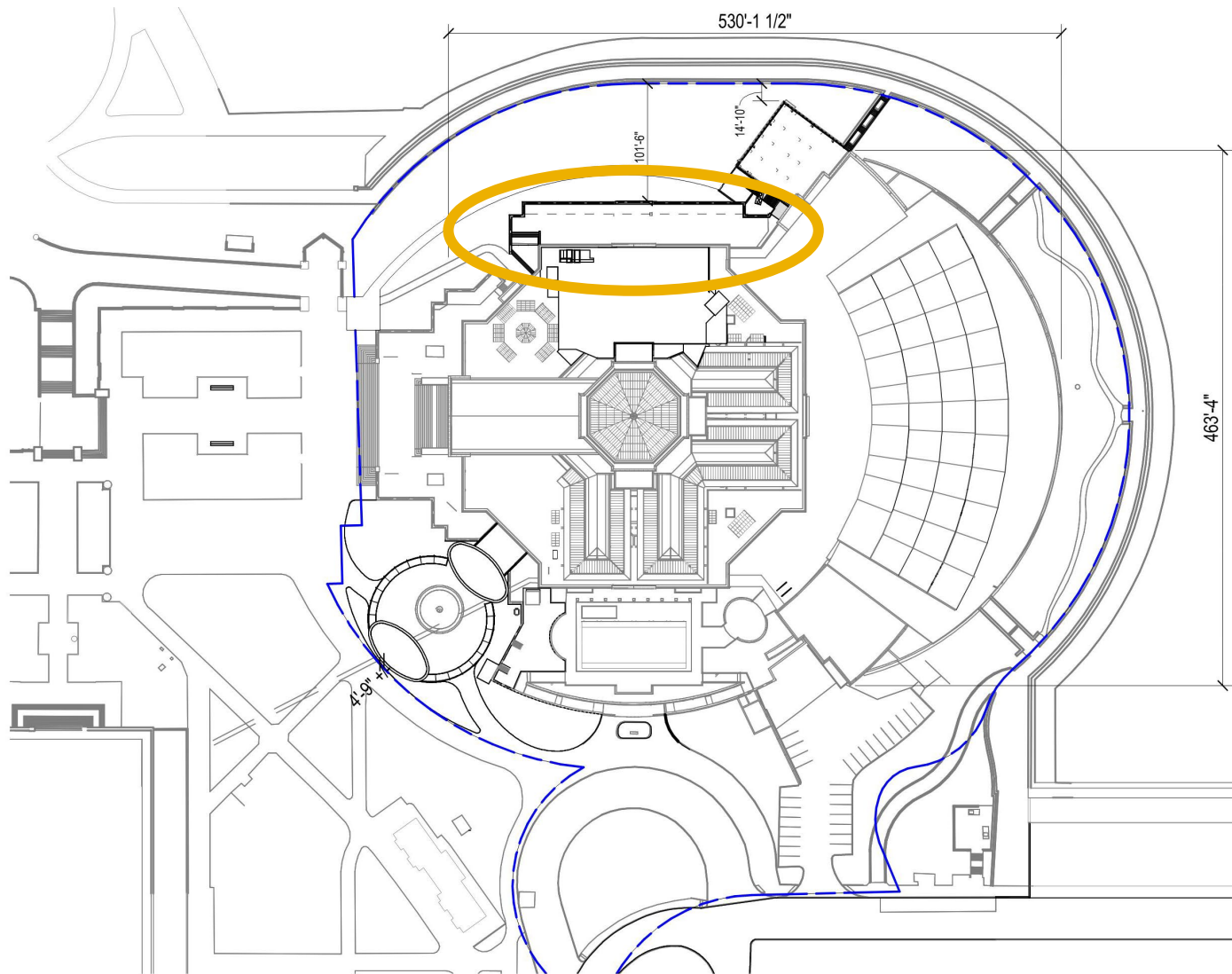
Entry Pavilion - Entry Pavilion Interior



Entry Hall



Historic Kovler Hall





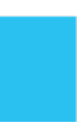
SHEDD AQUARIUM NORTH TERRACE RECONSTRUCTION

- **Safety concerns**

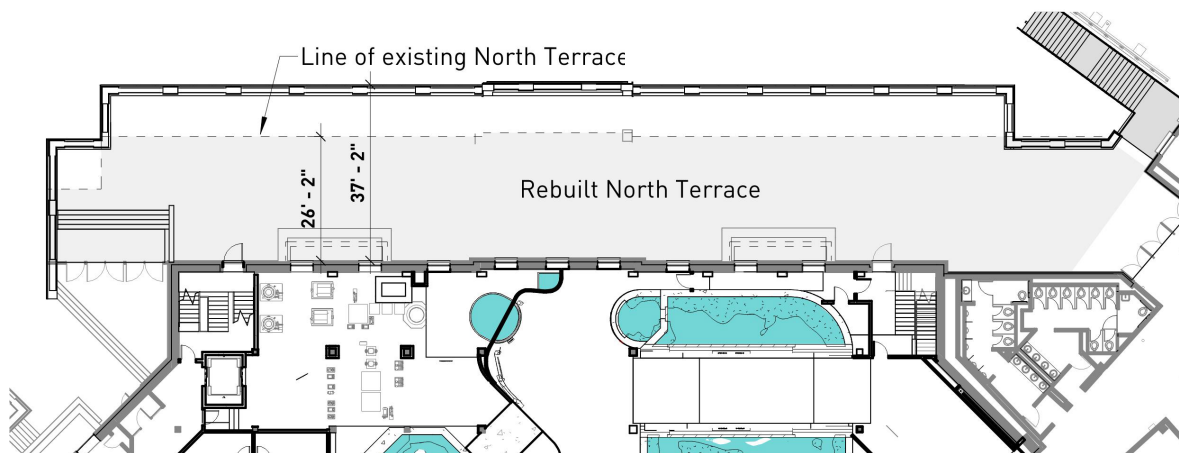
1. Uneven settlement of pavers is a tripping hazard
2. Uneven settlement of balustrade creates varying balustrade height
3. Existing balustrade is not at a code compliant height
4. Dislodged pieces of marble cladding
5. Inconsistent drainage of rainwater



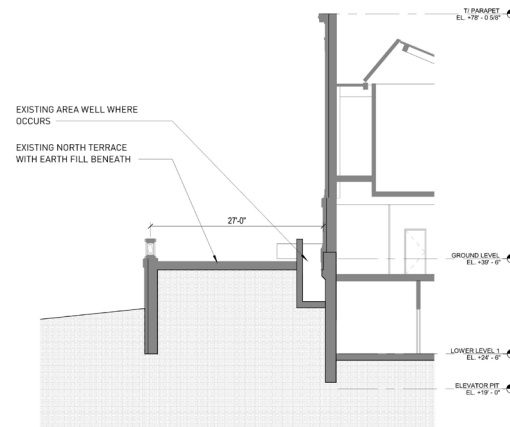
New Reef Exhibit - Water Tunnel



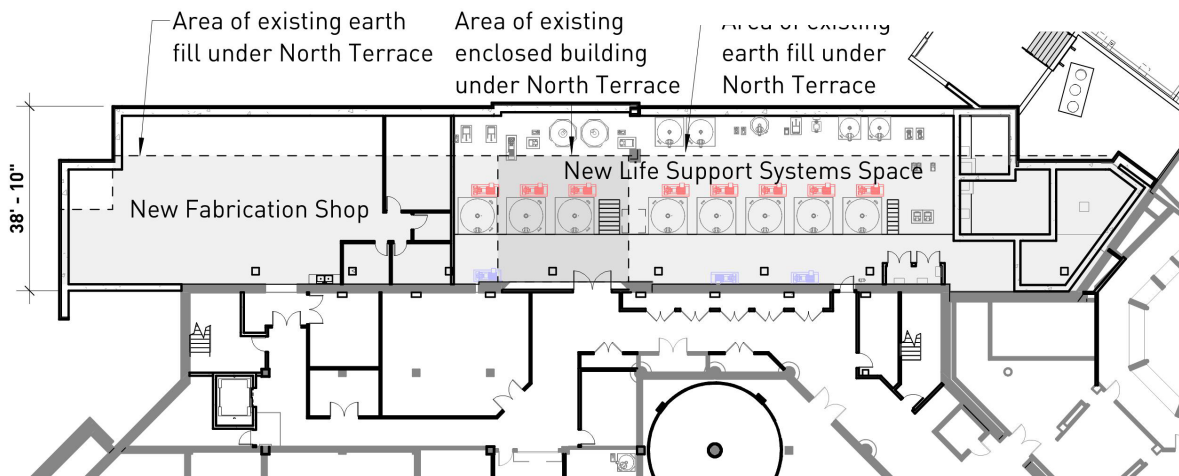
Terrace Level



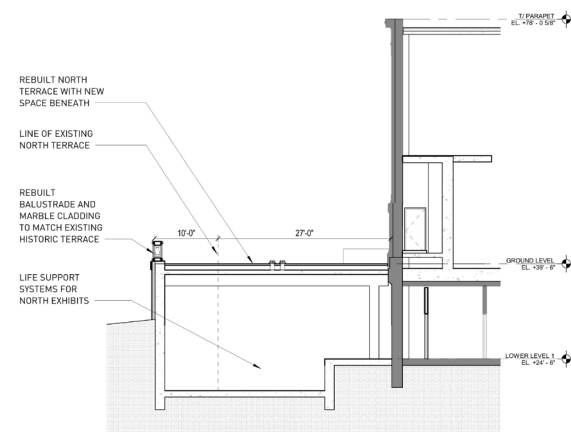
Existing 27'-Wide Terrace Cross-section



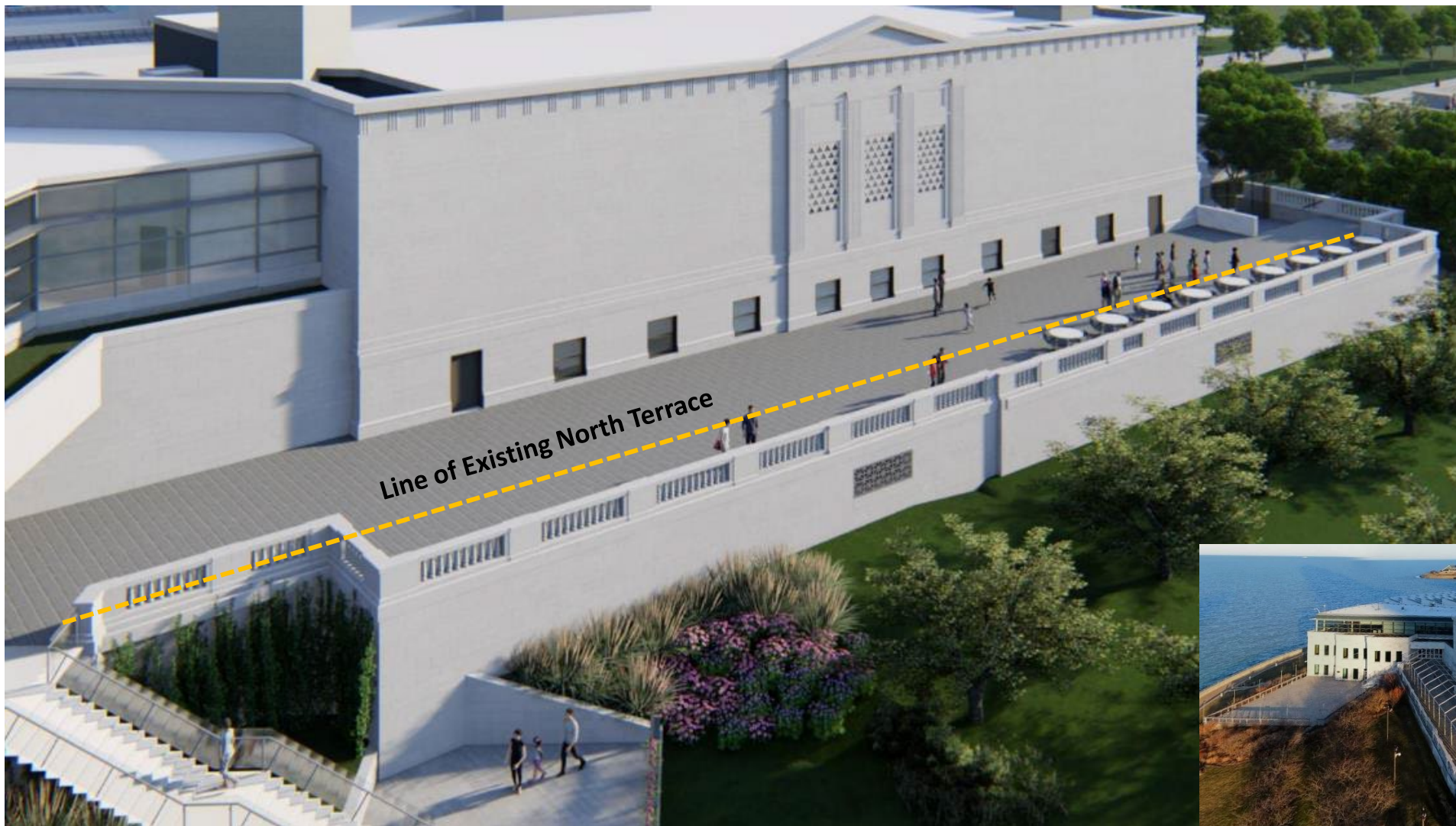
Lower Level



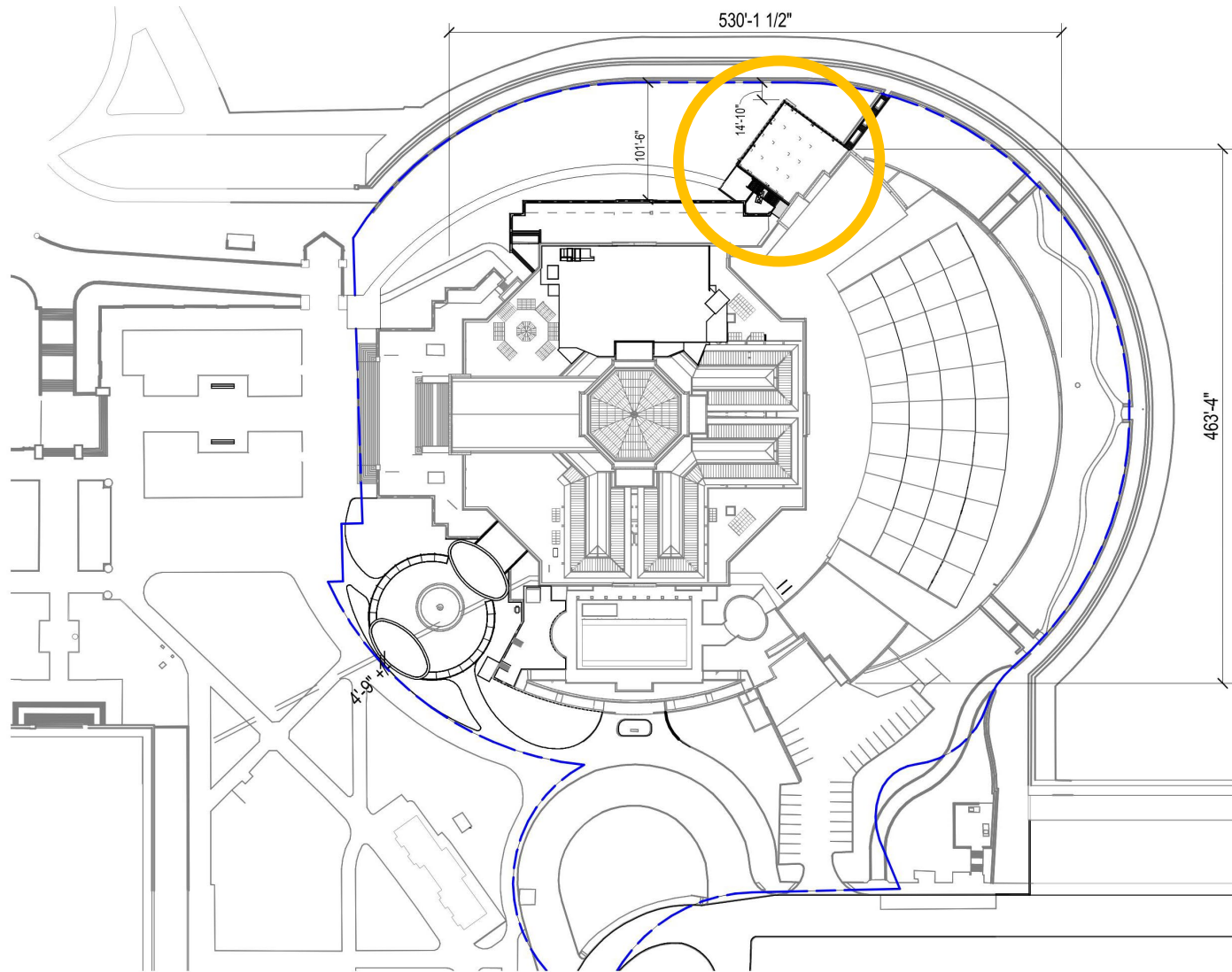
Proposed 37'-Wide Terrace Cross-section



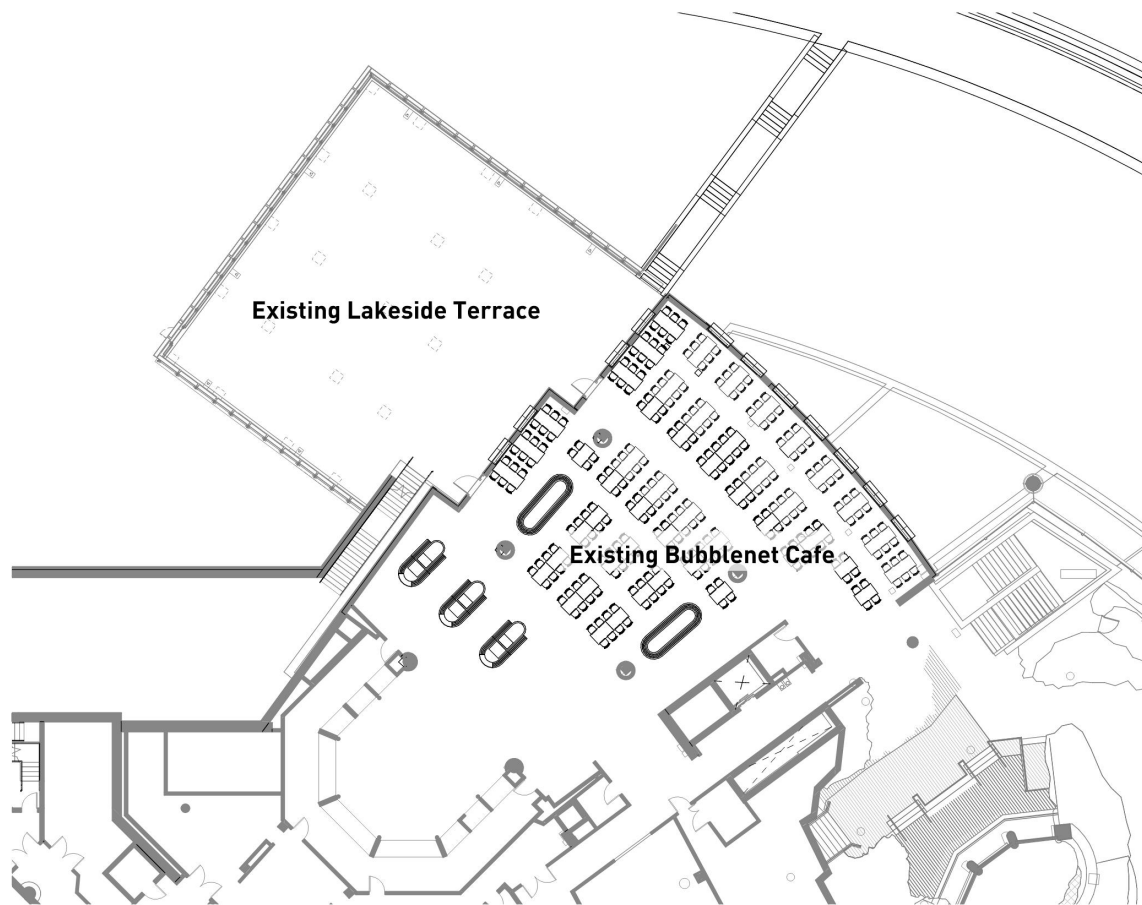
<- New Lower Level for Life Support Systems



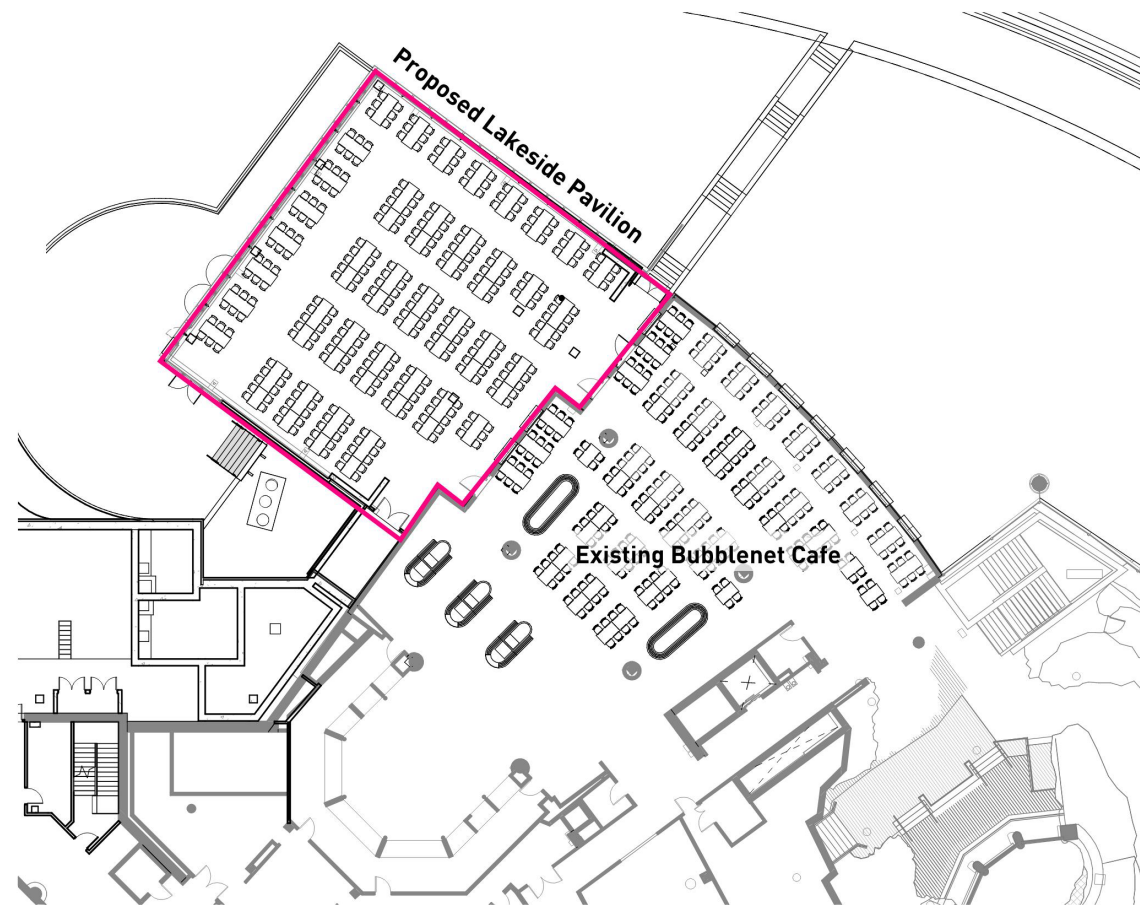
North Terrace - Overhead View



Lakeside Pavilion

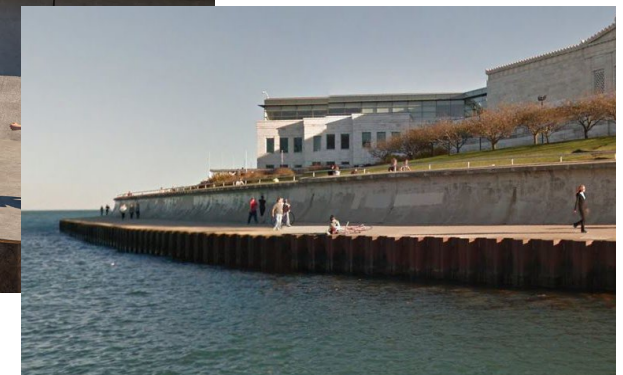


Existing Seating

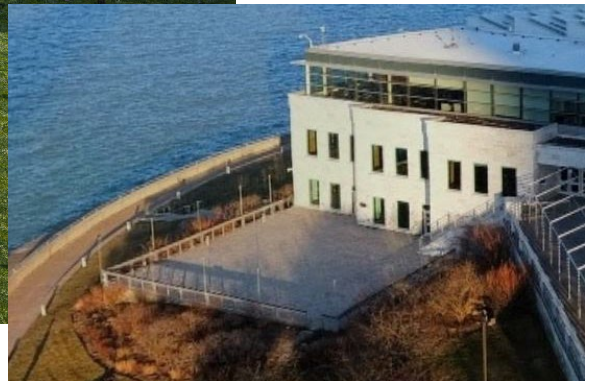


Expanded Seating with Lakeside Pavilion

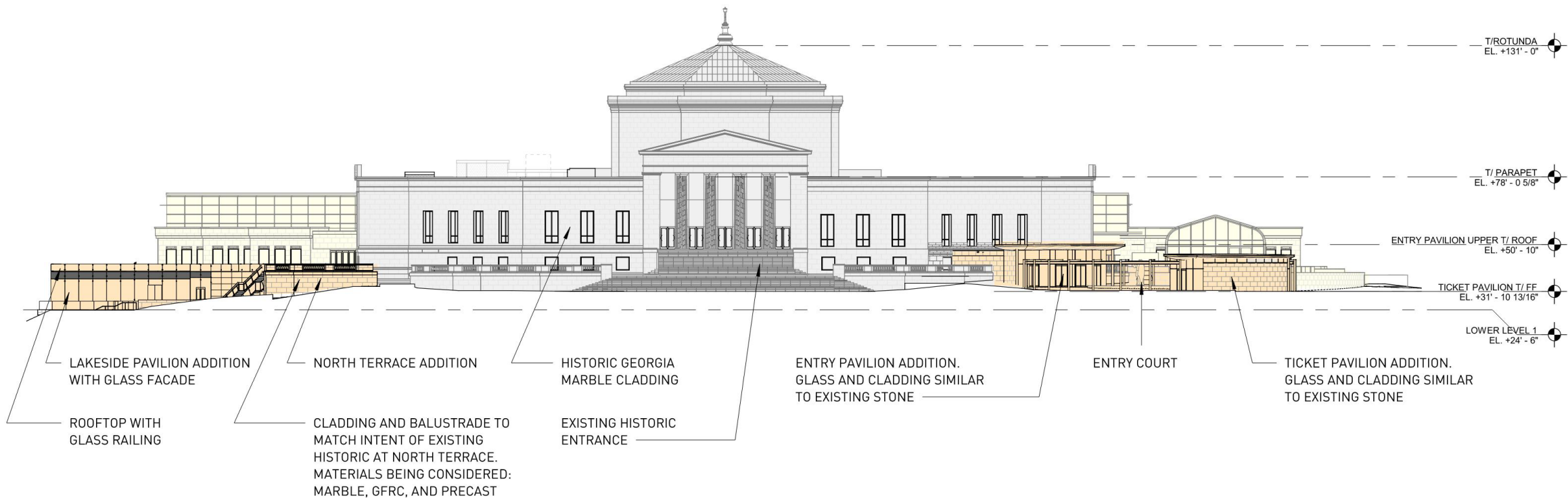
Lakeside Pavilion - Seating Plans



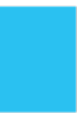
Lakeside Pavilion - Rendering



Lakeside Pavilion - Rendering



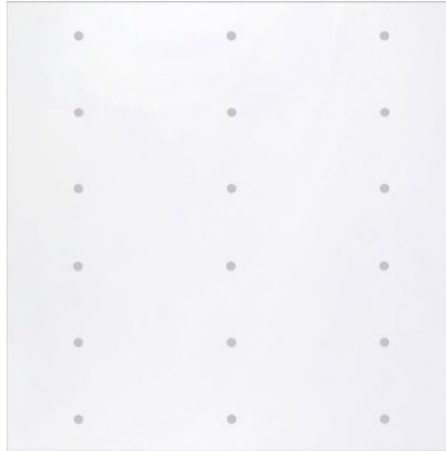
West Elevation



Guardian Glass Bird Glass



Existing Marble Façade:
Georgian Marble



Bird1st Etch 21

Threat factor: 25
6mm dots 2" x 4"

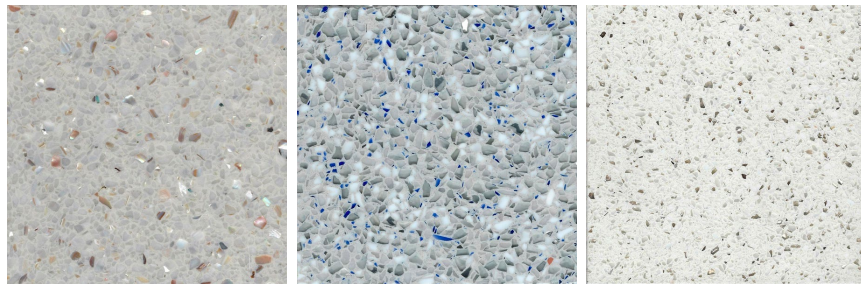
Entry Pavilion Cladding Options:



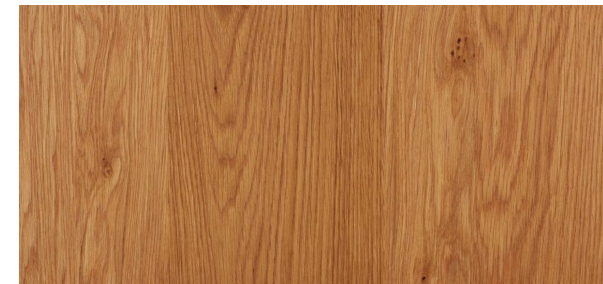
Sintered Stone
Neolith Arenda



GFRP
Rieder Vanilla Ferro Light



Flooring:
Terrazzo Custom Mix

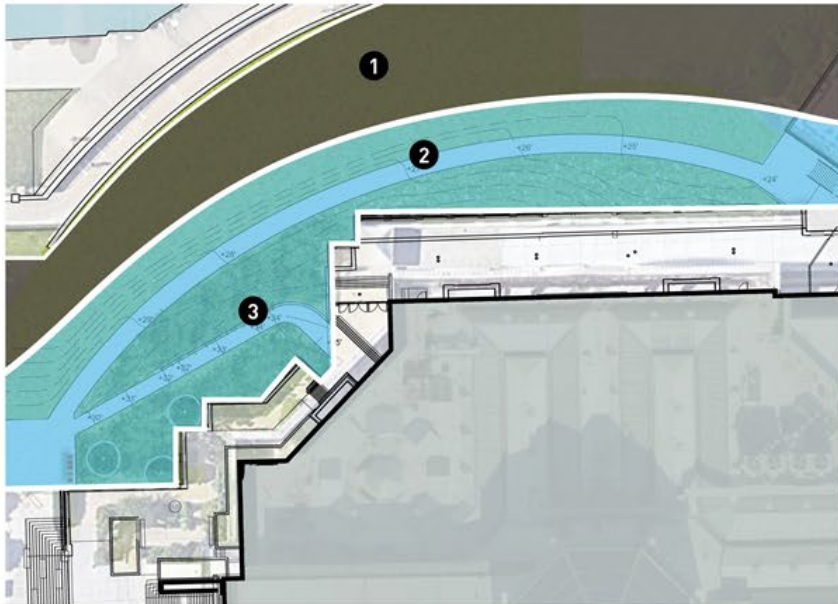


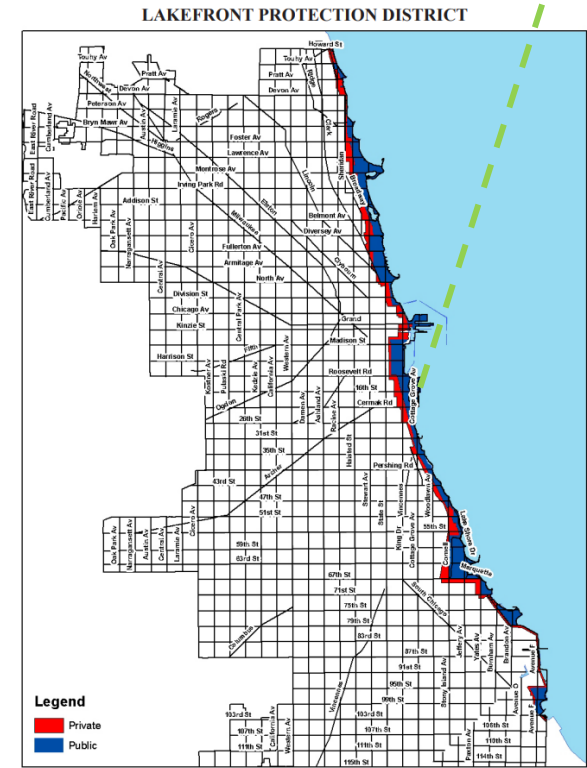
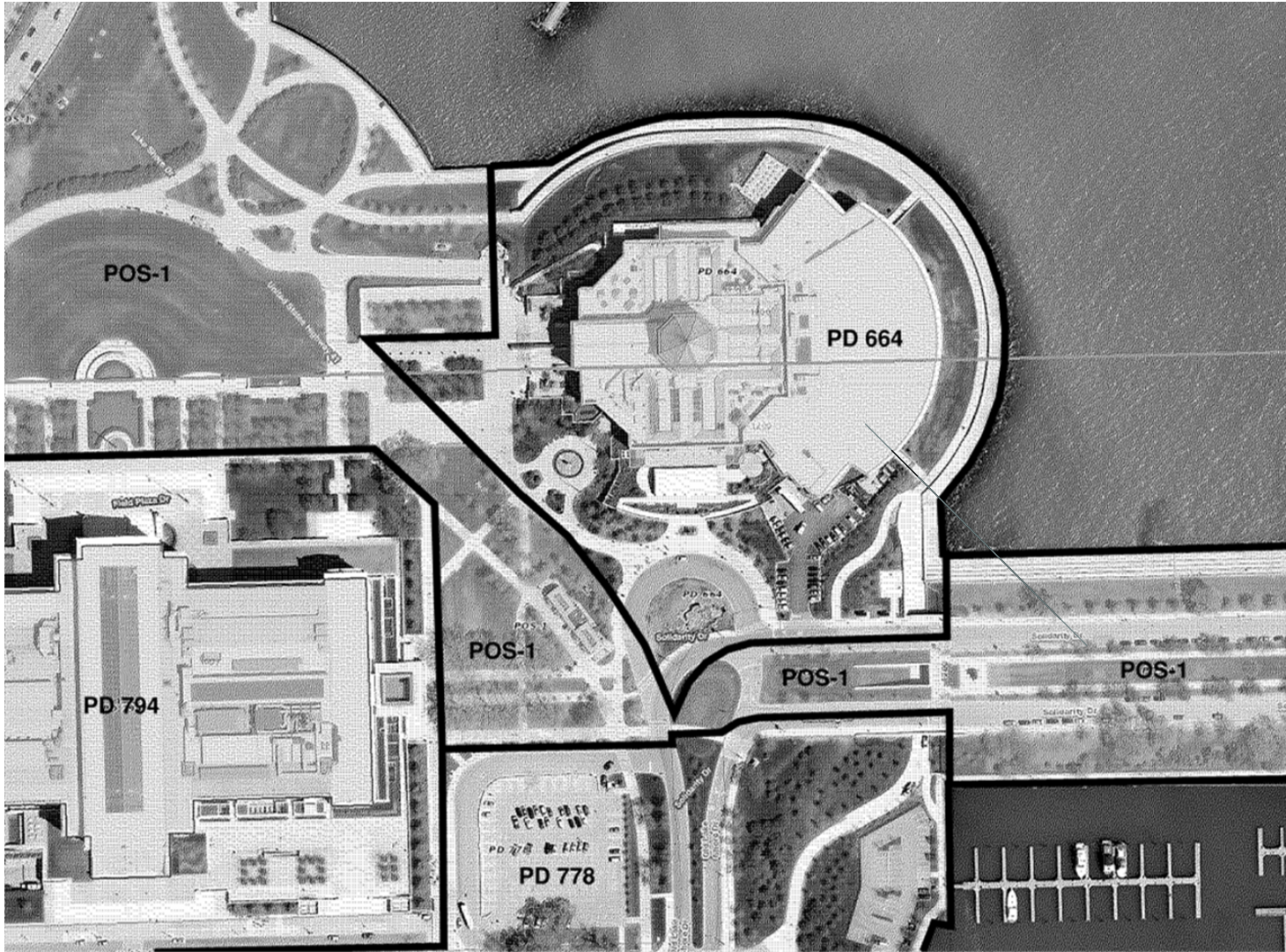
Ceiling Wood
(Interior/Exterior):
Prodema White American Oak



LEGEND:

- 1** Communal Lawn
- 2** Removal of 28 existing Crabapple trees at the end of their life cycle, to be replaced by woodland tree species
- 3** Existing woodland understory planting to remain and expand







COMMITTEE ON DESIGN

Department of Planning and Development

1200 S. Lake Shore Drive

Near South Side / 4th Ward / Ald. King

Shedd Aquarium

Valerio Dewalt Train Associates

Site Design Group, Ltd.

Daspin & Aument, LLP

February 9, 2022



APPENDIX 1

Design Narrative and Additional Drawings



DESIGN NARRATIVE

Exterior Entry Pavilions

Function:

- Enhanced accessible entry pavilion, including touchless security and ticket scanners, and a separate ticket pavilion.

Design:

- A circular trellis defines a place that will celebrate the commissioned sculpture and fountain, Man with Fish, while anchoring the two pavilions which are a study in minimalism.
- Two twin pavilions float effortlessly above the plaza, one for entry and the other for ticketing.
- The connection to the historic building slides between the historic west and south terraces and is held below the beltline expressed on the stone façade.
- Arrival experience is enhanced by a new landscaping plan that invites the visitors to play, rest and engage in the new sustainable gardens.



DESIGN NARRATIVE

Exterior Entry Pavilions (continued)

Historic stewardship:

- Listed on the National Register of Historic Places; Compliant with the Secretary of Interior's Standards for Rehabilitation.

Site constraints:

- Respect historic terraces and façade.
- Commissioned Man with Fish fountain must remain.
- Underground tunnel and utilities for the Shedd and other institutions on the Campus.
- Minimum land available within leased boundaries.



DESIGN NARRATIVE

North Terrace Replacement

Function:

- Replacement of deteriorating terrace, includes adding 10' to the width of the terrace and construction of a basement to house life support equipment required for the improved large animal habitats in the North Galleries.

Design:

- New marble material or existing historic stone will be salvaged, re-cut and used to clad the rebuilt terrace.

Historic stewardship:

- Compliant with the Secretary of Interior's Standards for Rehabilitation.



DESIGN NARRATIVE

Lakeside Pavilion

Function:

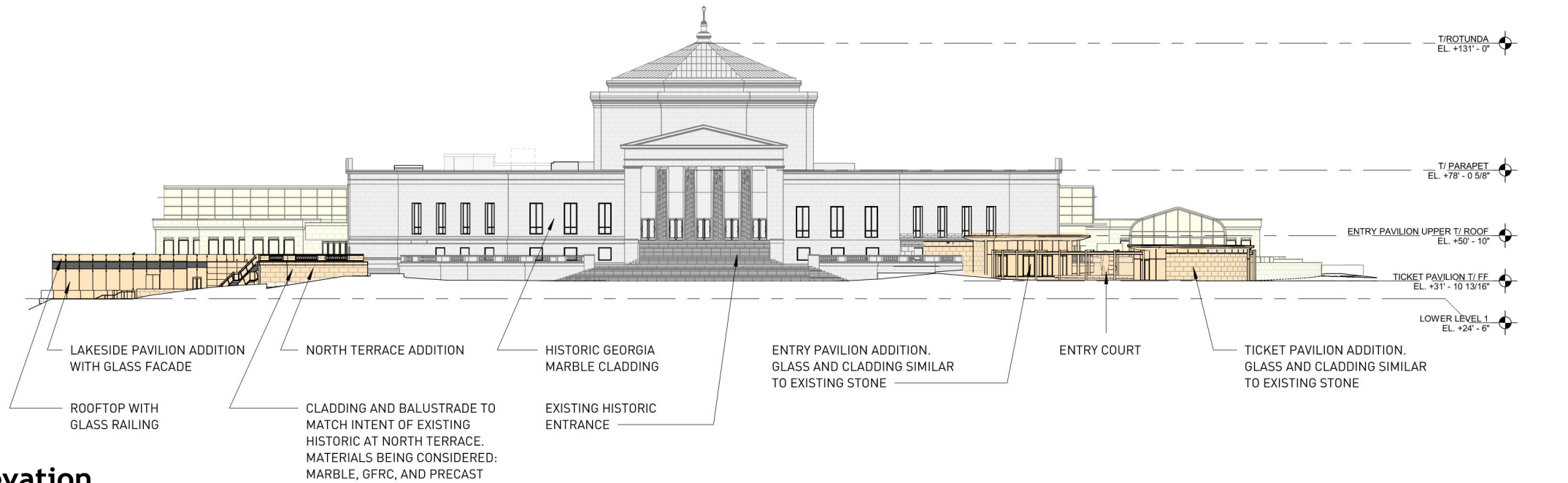
- The existing outdoor dining terrace will be enclosed to more than double the seating in the Bubble Net restaurant to accommodate school groups and large meetings. The design includes a roof deck that connects to the north terrace.

Design:

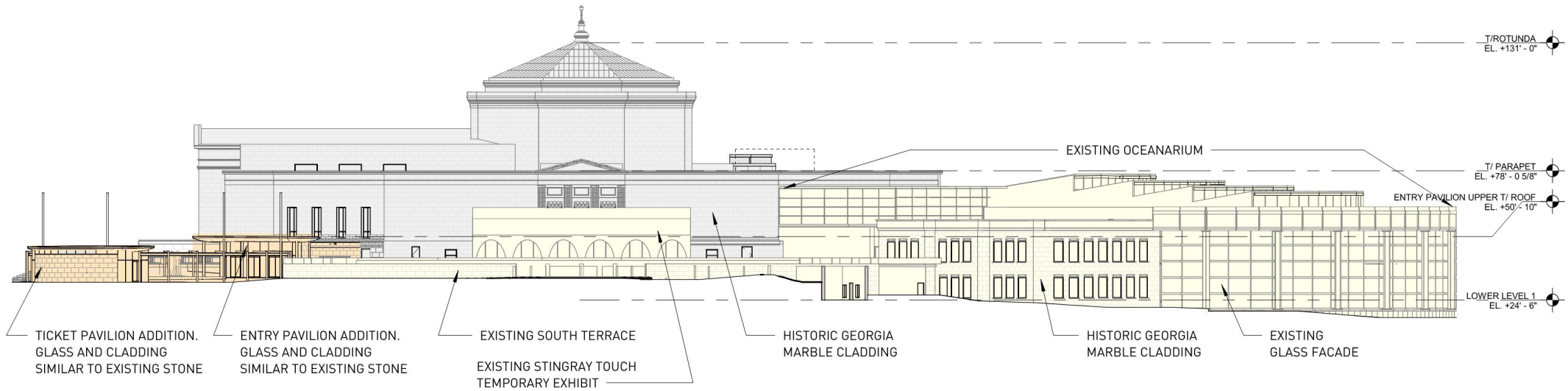
- The addition is connected to the 1980's Oceanarium. The height and materials are intended to make it unobtrusive and will not challenge the primacy of the historic building.

Historic stewardship:

- Compliant with the Secretary of Interior's Standards for Rehabilitation.

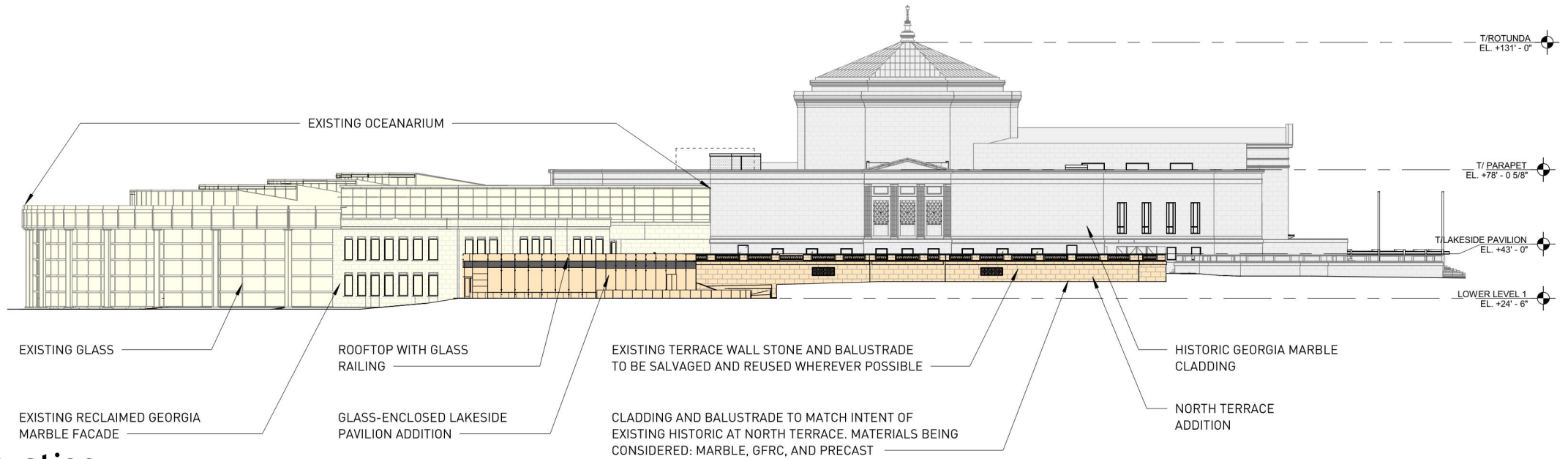


West Elevation

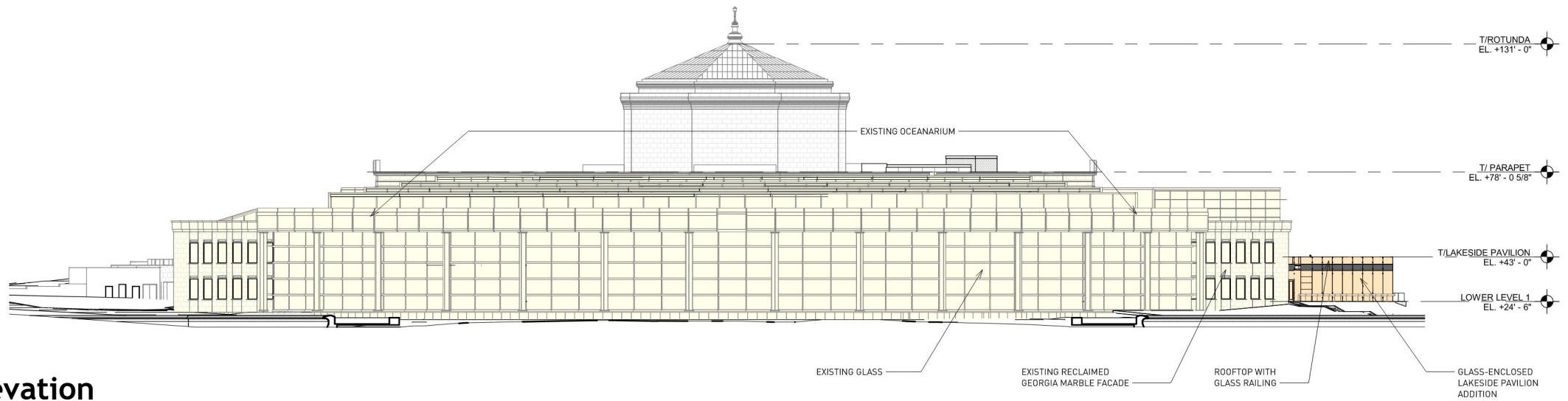


South Elevation

Overall Elevations

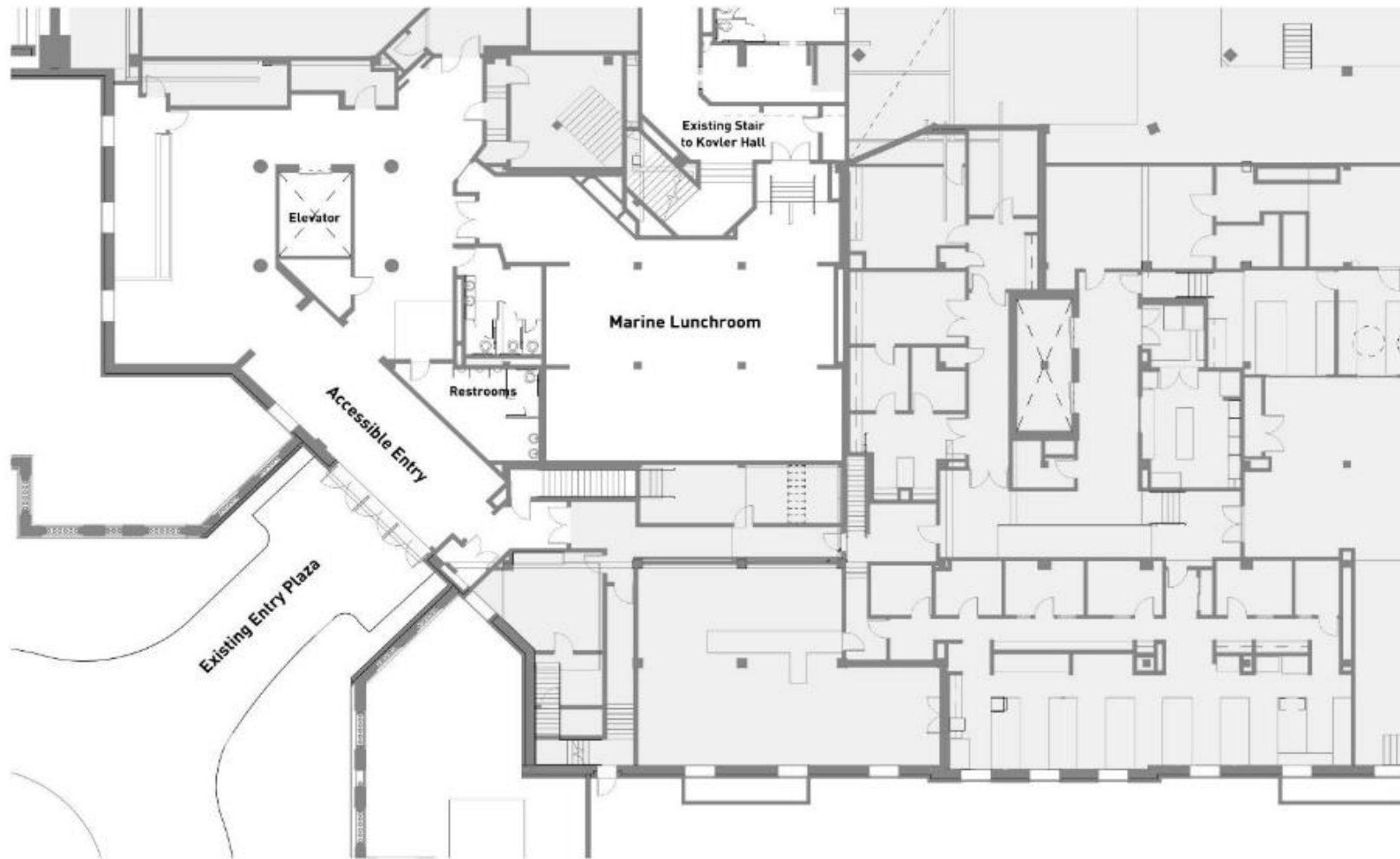


North Elevation

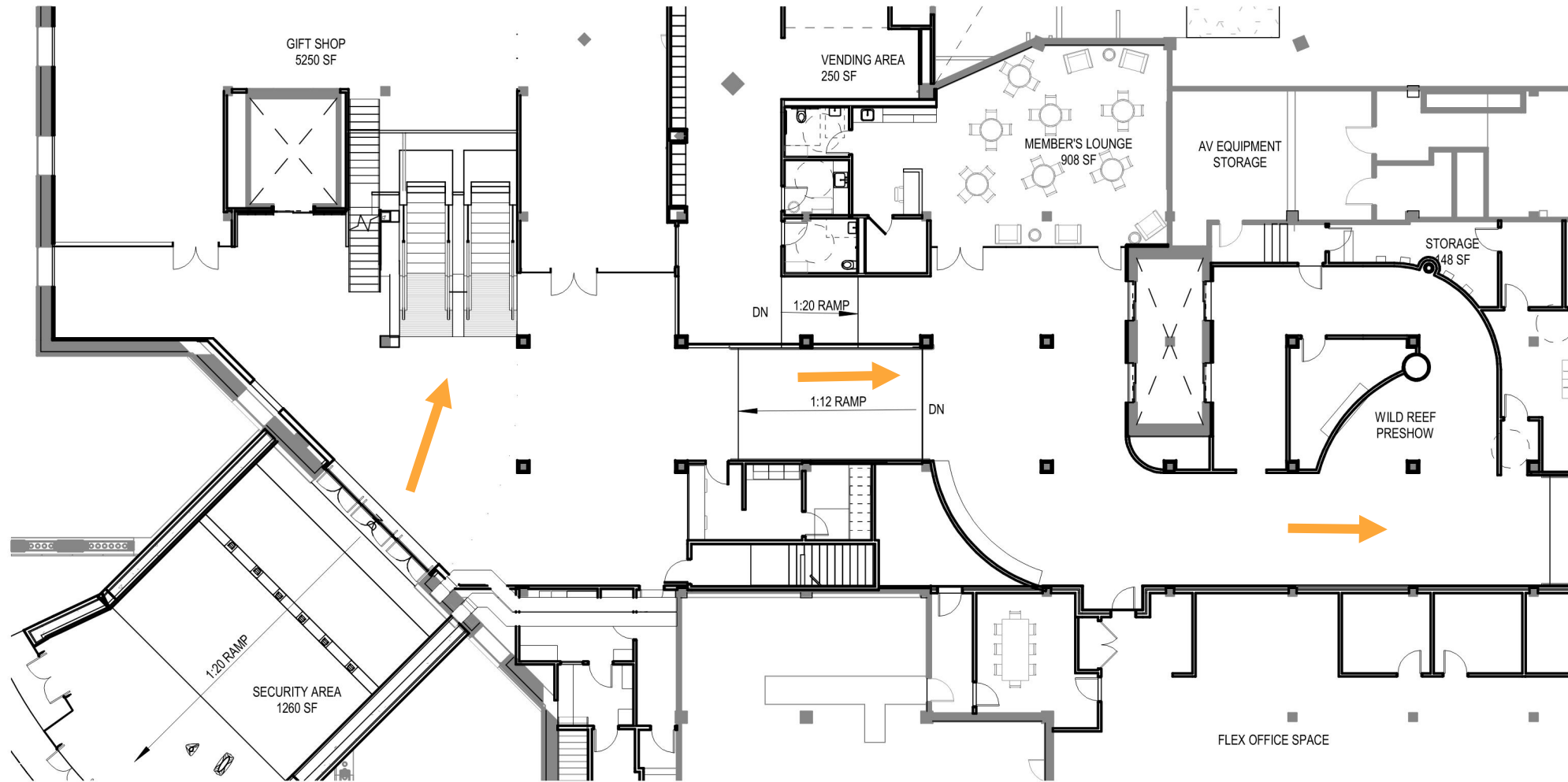


East Elevation

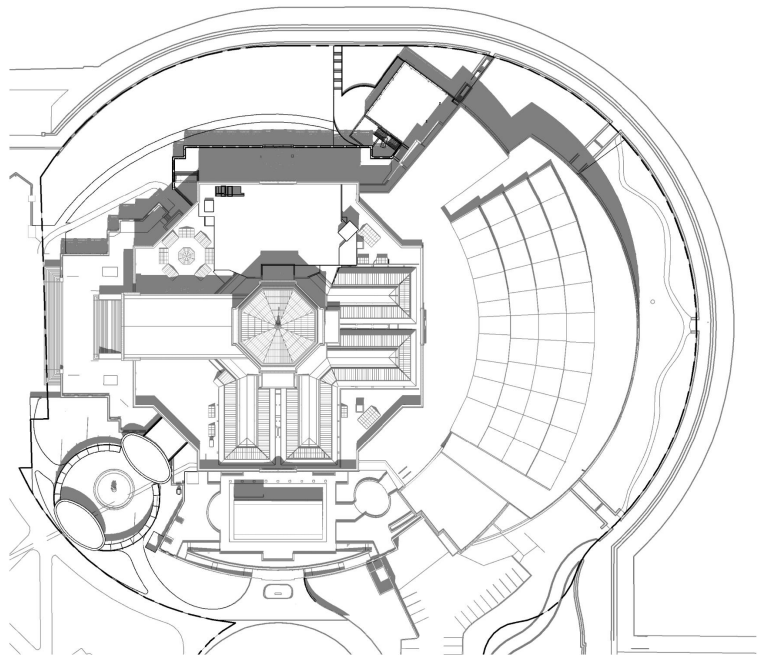
Overall Elevations



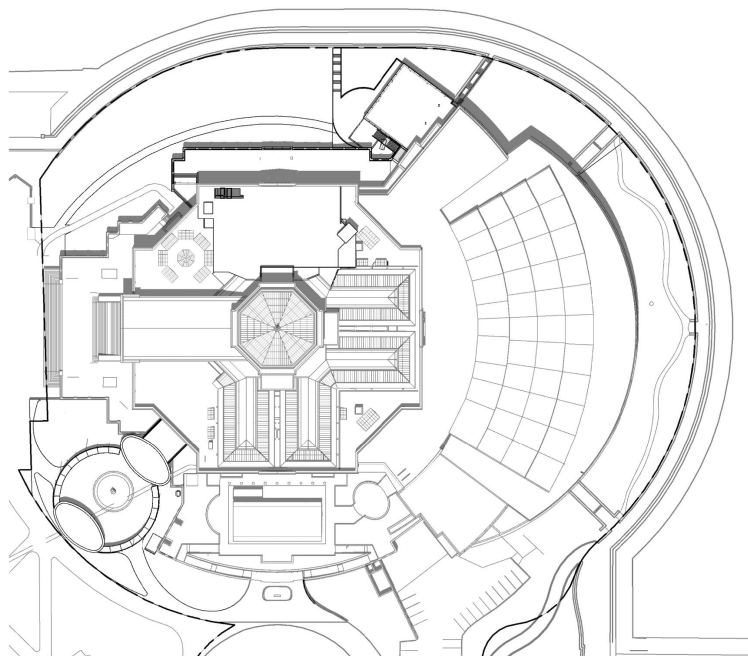
Existing Accessible Entry Plan



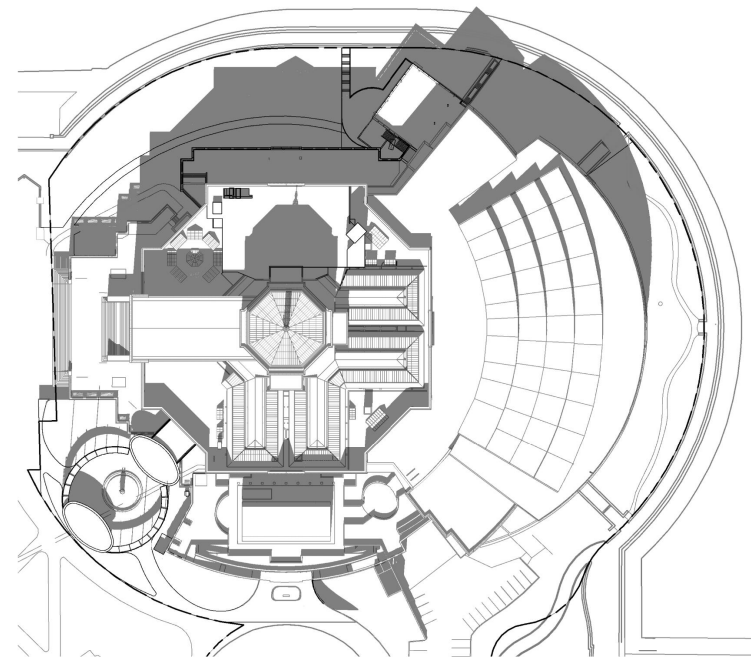
Proposed Accessible Entry Plan



March 21, Sept 21
12:00pm



June 21
12:00pm



December 21
12:00pm

