

Welcome

to the bike safety event for the **Augusta Safety Improvements**

The Chicago Department of Transportation (CDOT) is presenting Safety Improvements on Augusta Avenue between Western Avenue and Milwaukee Avenue.

This project will **MAKE THE STREET SAFER FOR EVERYONE**—whether they are walking, biking, or driving—and provide a **LOW-STRESS CONNECTION** for people bicycling of all ages and abilities. These changes would be installed later this year.

MEETING EVENTS

- Discuss Augusta corridor safety improvements
- Bike a kid-friendly obstacle course
- Sign up for Learn-to-Ride a bicycle class
- Get your bicycle helmet properly fitted
- Sign up for a car seat check
- Learn about resources and tips for riding and maintaining your bicycle
- Register your bike with the Chicago Police Department



To find more information about projects, visit:
chicago.completestreets.org/projects/active-projects



Brian Hopkins
2nd Ward Alderman

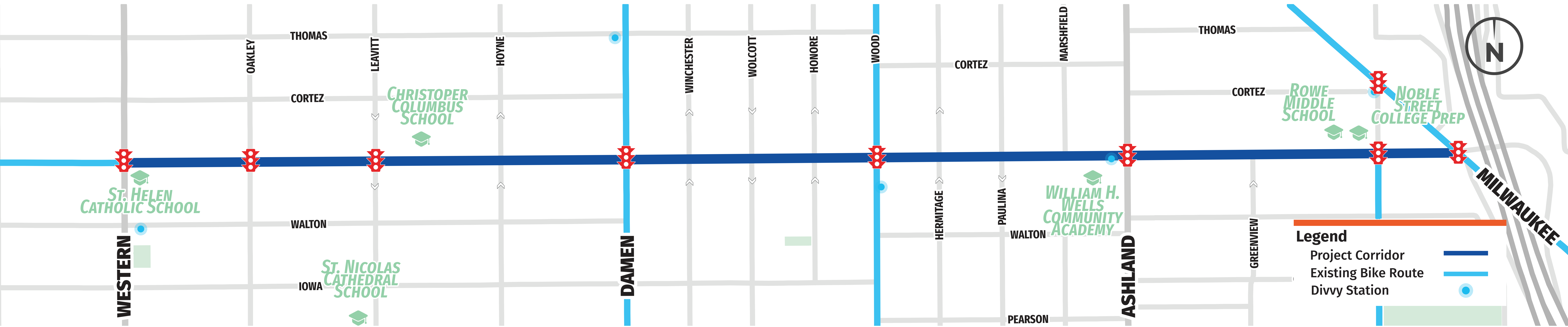


EXISTING CONDITIONS

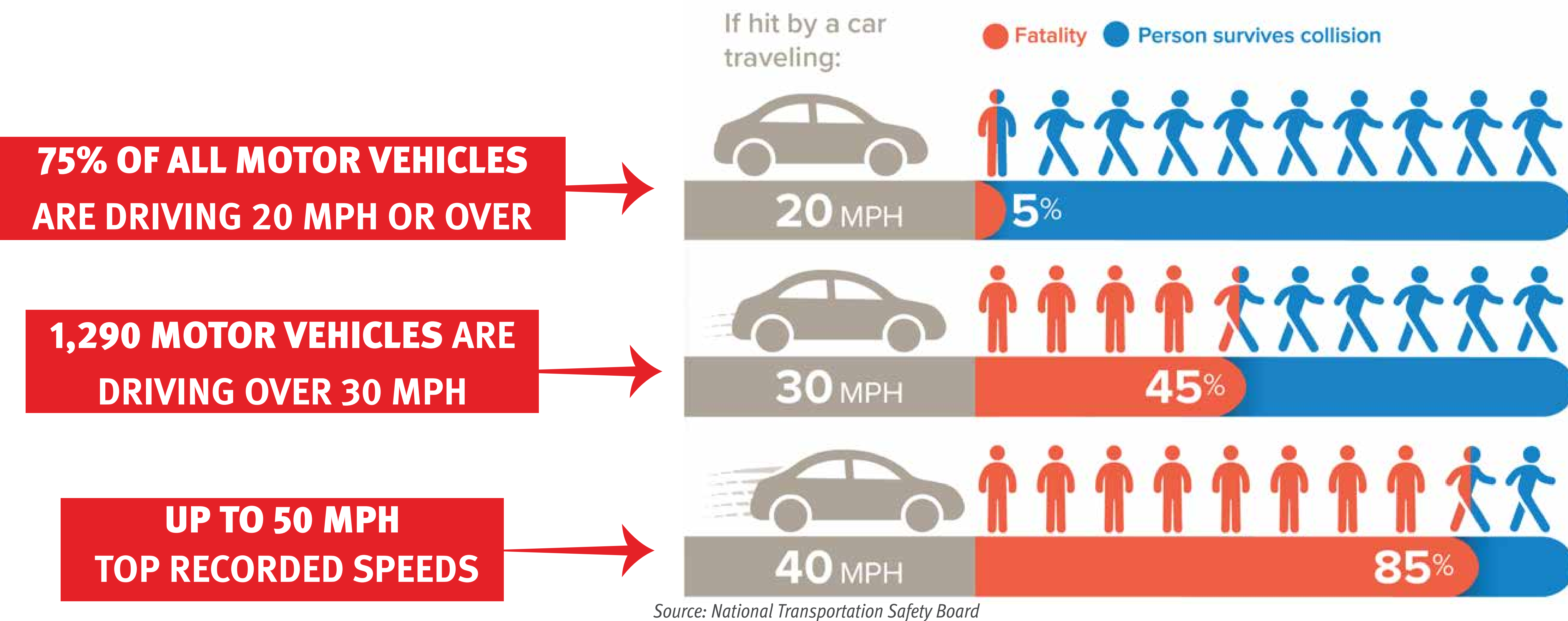
WHAT WE'VE HEARD FROM RESIDENTS

- HIGH MOTOR VEHICLE SPEEDS
- DOUBLE PARKING AT SCHOOLS

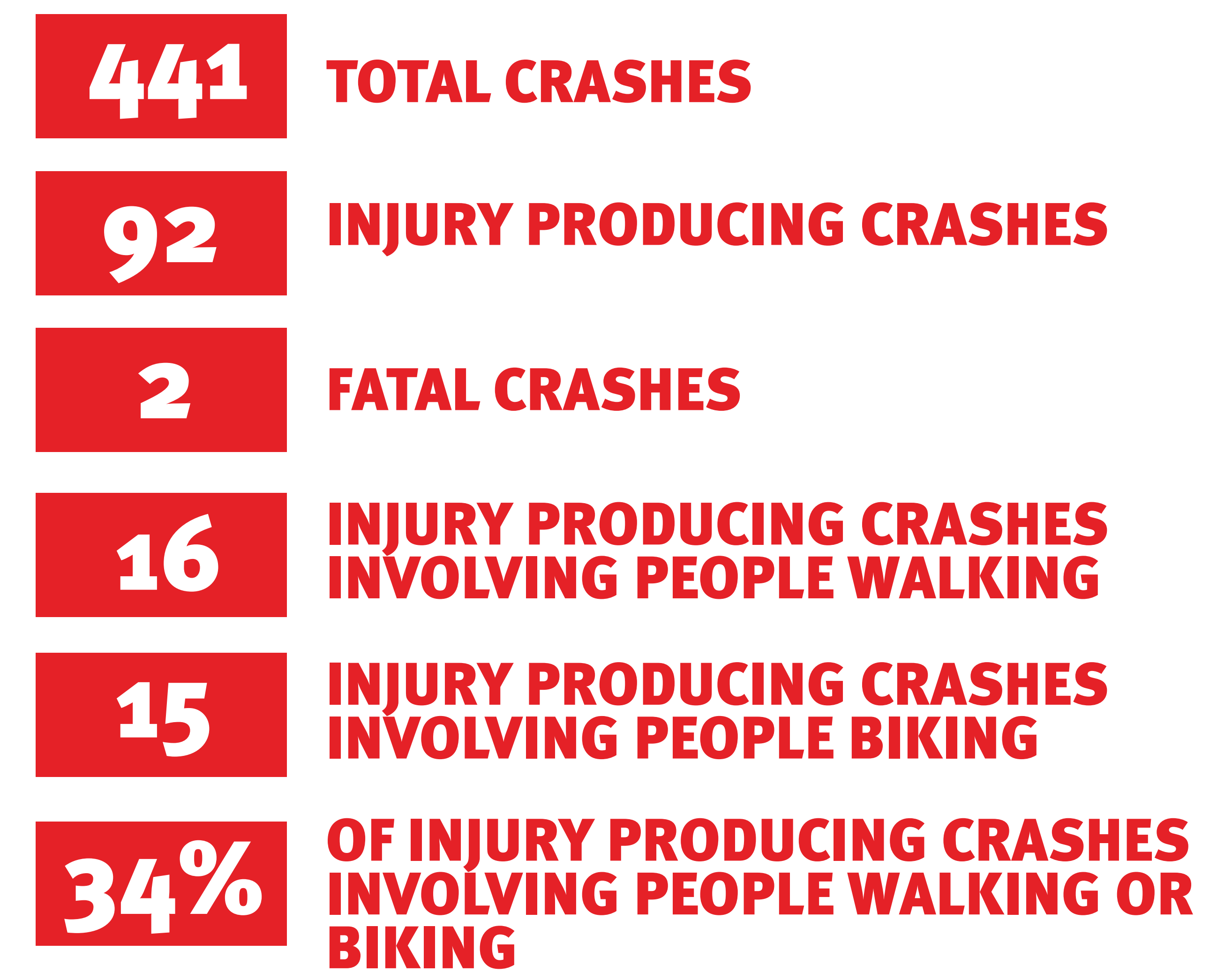
- DIFFICULTIES CROSSING AUGUSTA ON FOOT
- CONCERNS ABOUT BICYCLE INTERACTIONS WITH CARS



MOTOR VEHICLE SPEEDS

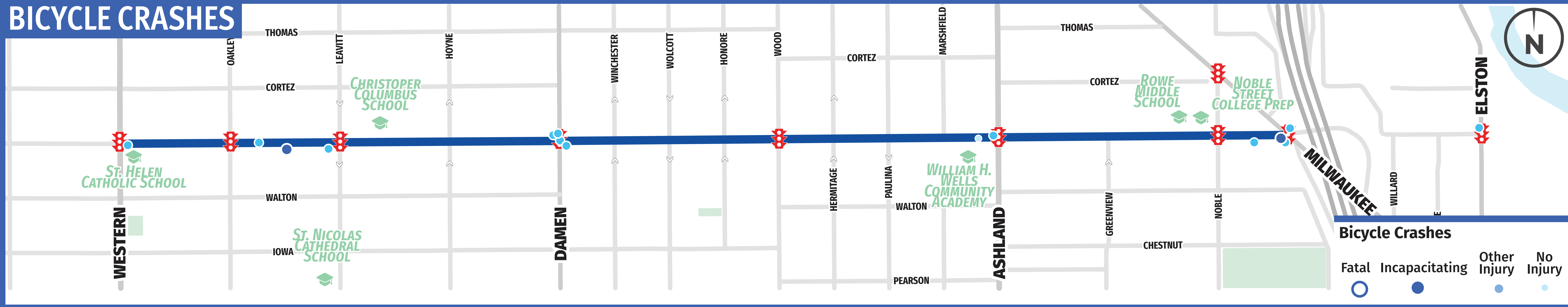


CRASHES (2016-2020)

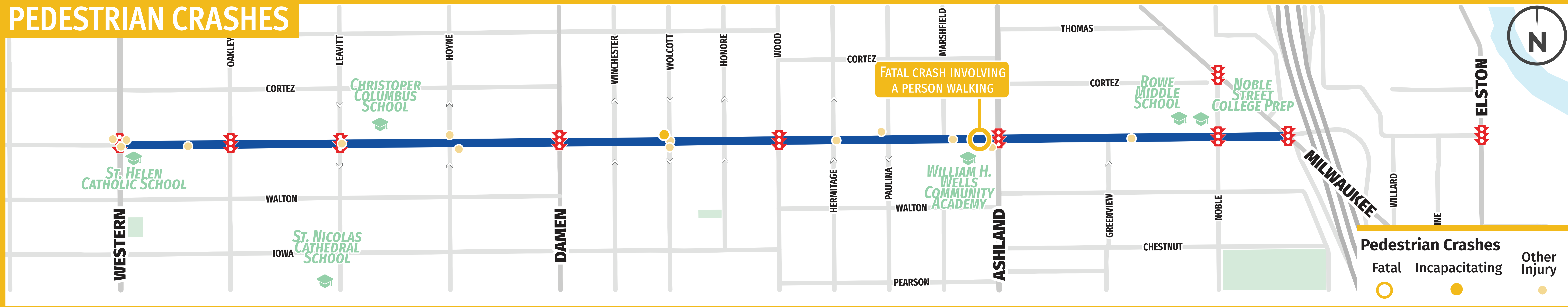


CRASHES (2016-2020)

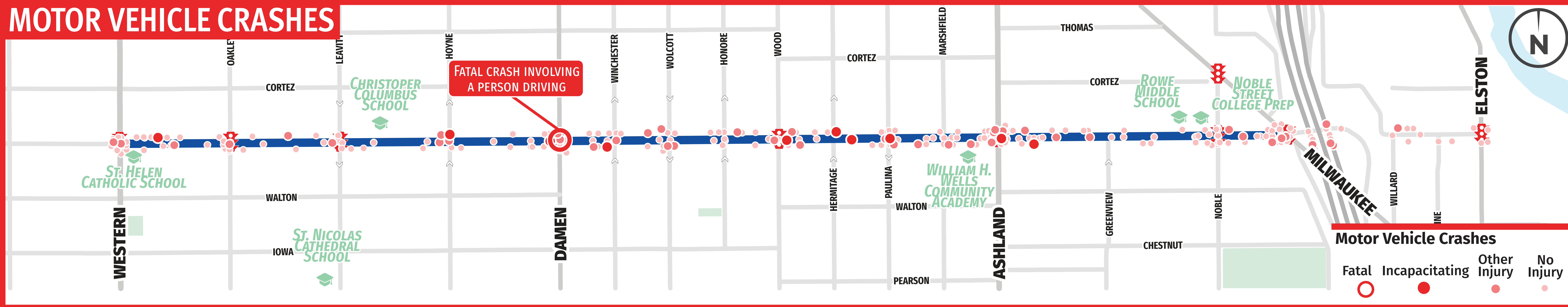
BICYCLE CRASHES



PEDESTRIAN CRASHES

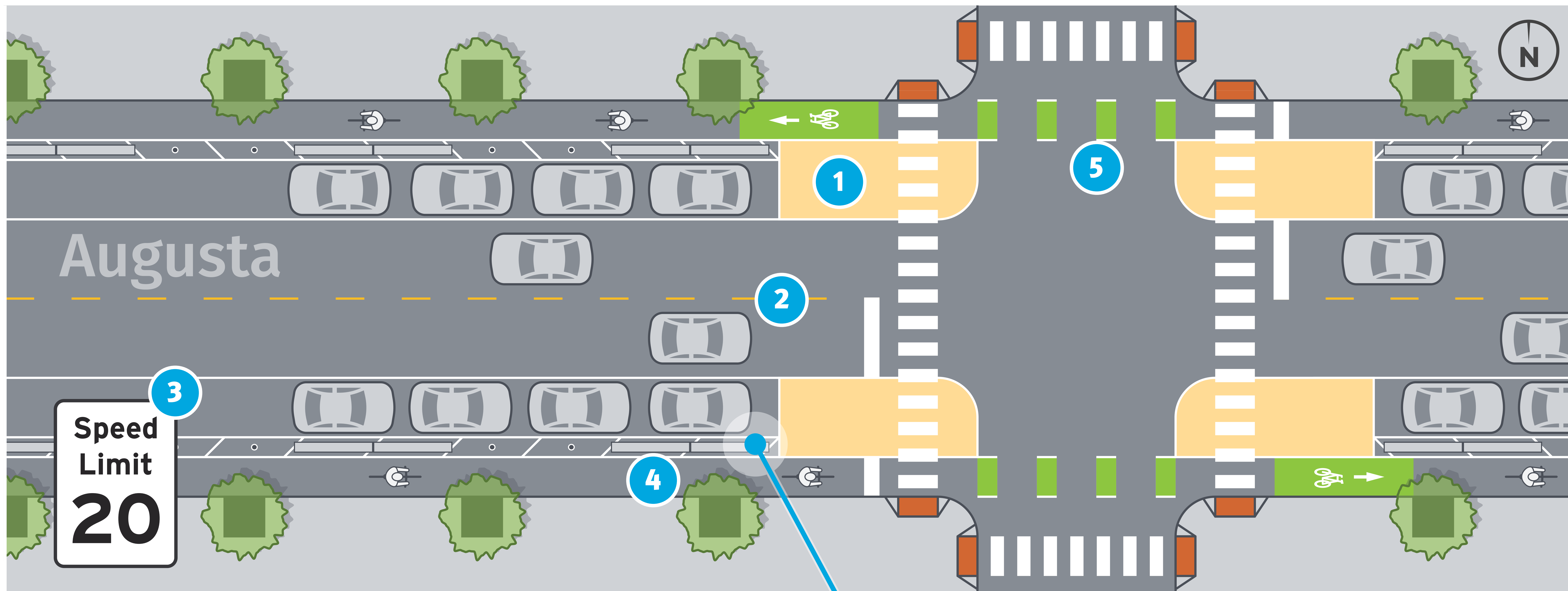


MOTOR VEHICLE CRASHES



Augusta Safety Improvements

TYPICAL SECTION



HOW WILL THIS PROJECT IMPROVE AUGUSTA?

1. IMPROVE PEDESTRIAN SAFETY

Reduces the distance and time crossing the street for people walking
Make people walking more visible to people driving and biking

2. ORGANIZE THE STREET

Clearly define space on the street for each mode
Make people biking on the street more predictable

3. NEW 20 MPH SPEED LIMIT

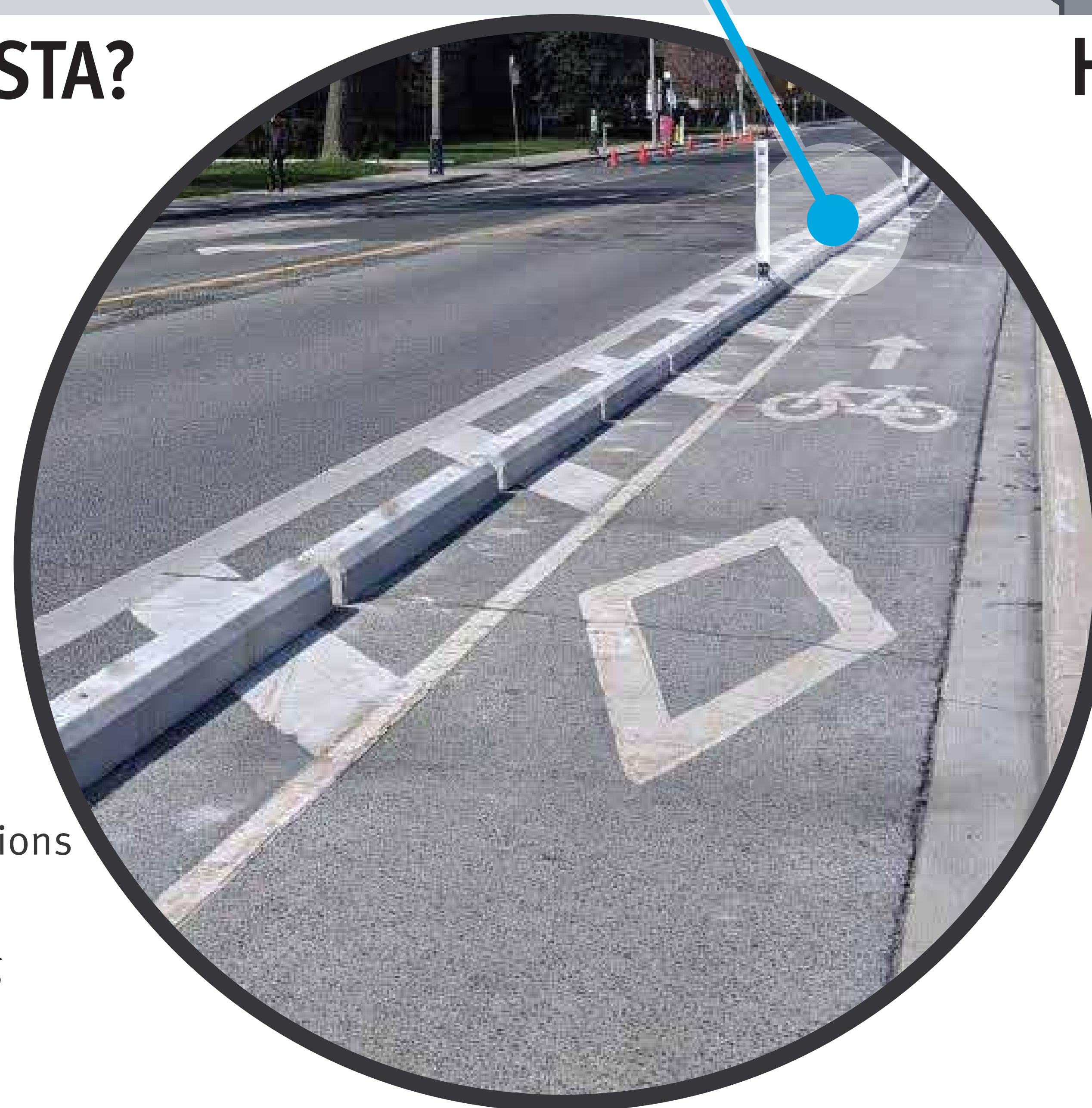
Lower speeds reduce the likelihood of injuries
Easier to cross Augusta and more comfortable for everyone

4. PROTECTED BIKE LANES

Create more comfortable routes for people of all ages and abilities
New lower stress connections within the community and to destinations

5. BETTER DESIGNED INTERSECTIONS

Increased visibility for school children, people walking, and people biking
Slower motor vehicle turn speeds across crosswalks



HOW WILL THIS BENEFIT THE NEIGHBORHOOD?

• LOW-STRESS BIKE LANES ARE GOOD FOR BUSINESS

Multiple studies have found bicyclists visit local businesses more often and spend more overall on local businesses

• IMPROVED ACCESS FOR ALL MODES

For people walking, biking, and taking transit

• ELIMINATE DOUBLE PARKING AT SCHOOLS

Reduce the potential for dooring crashes
Improve travel times during school pick up and drop off times

• INCREASED SCHOOL PICK-UP & DROP-OFF SPACES

Additional designated pick-up and drop-off spaces at Christopher Columbus School

• SAFE STREETS FOR ALL

Protected bike lanes, pedestrian improvements, and lowered speed limits will help reduce crashes for all users

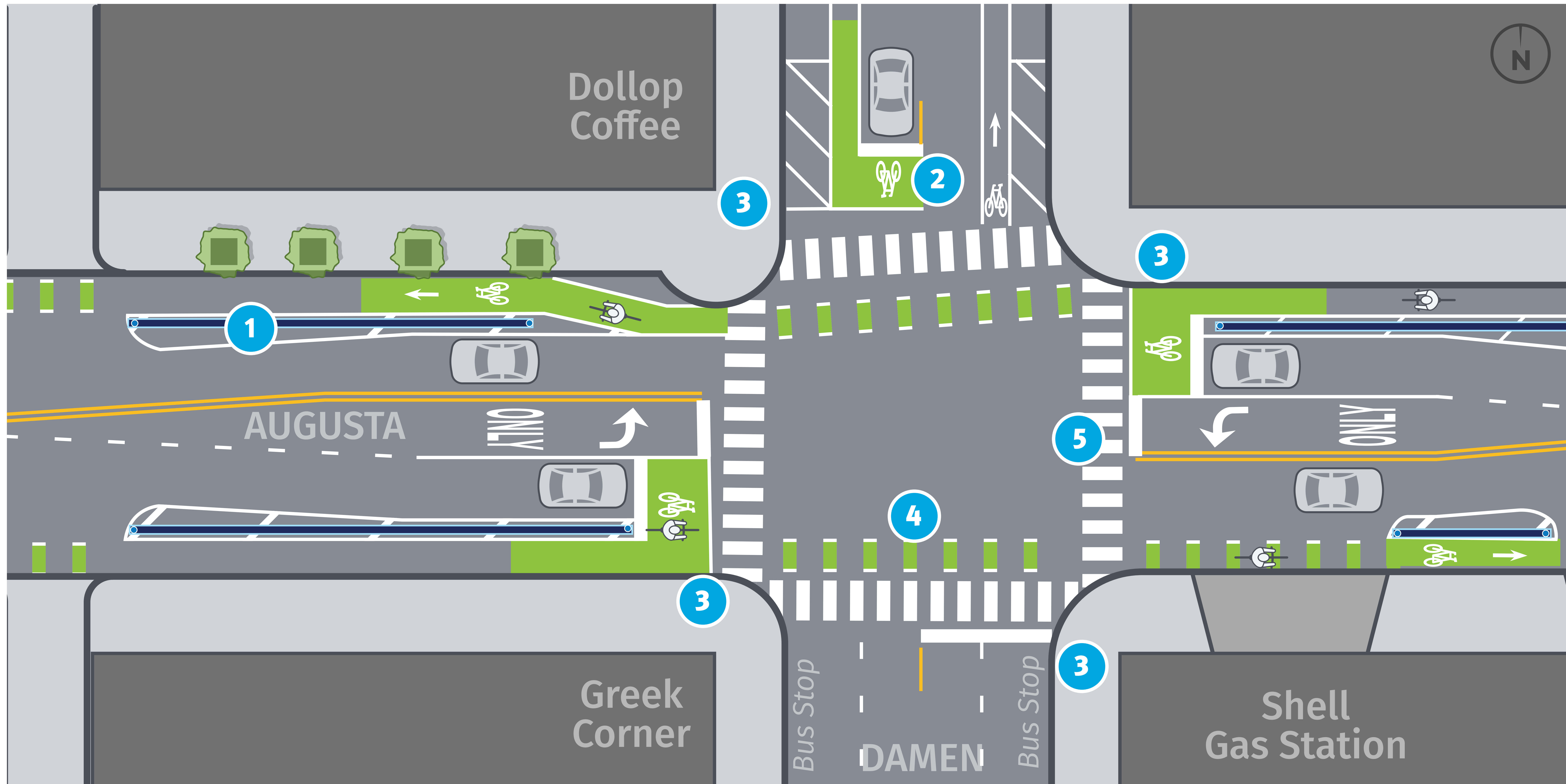
DAMEN INTERSECTION IMPROVEMENTS

INTERSECTION IMPROVEMENTS

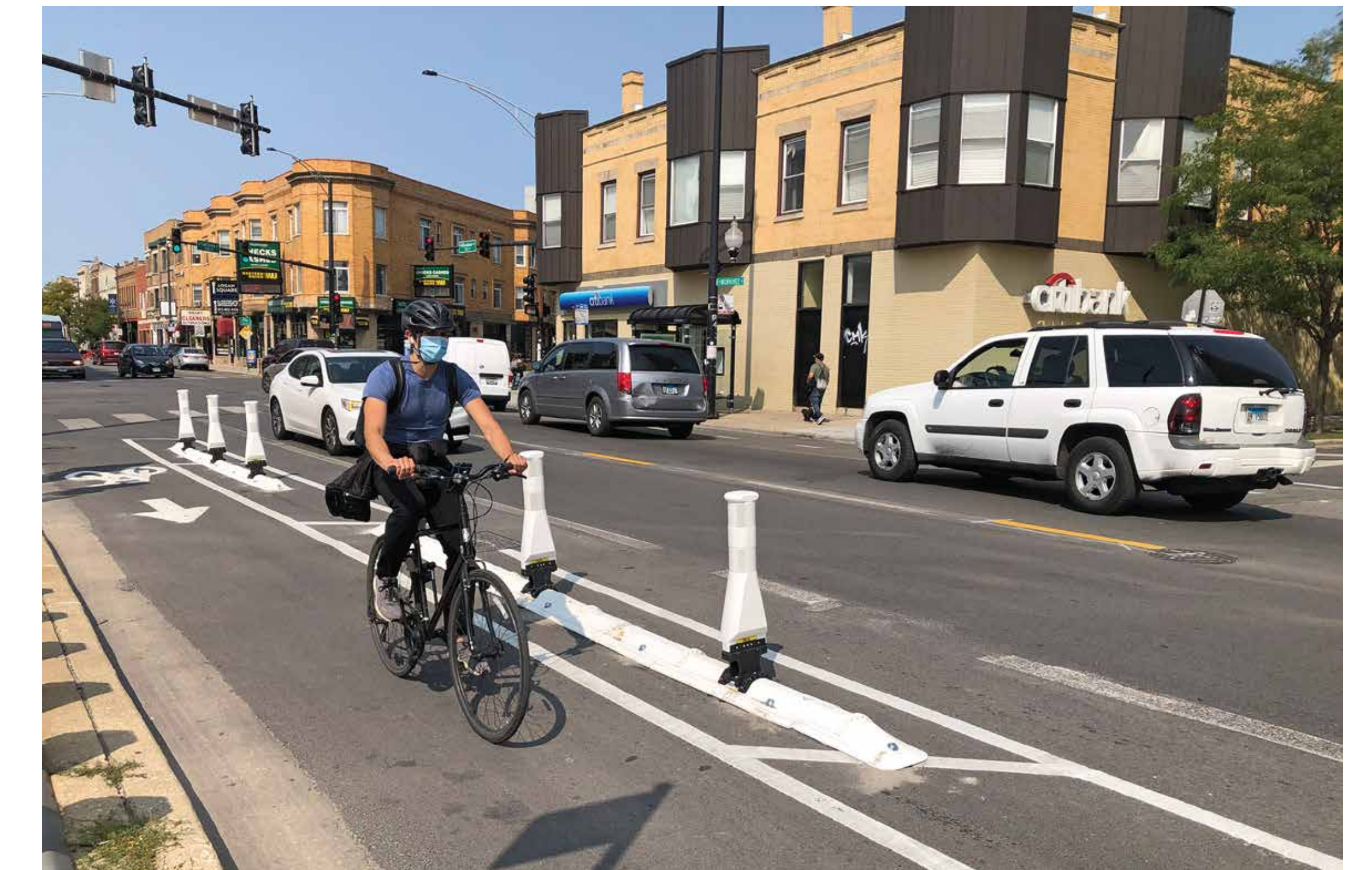
- 1. CONCRETE PROTECTED BIKE LANES
- 2. BICYCLE BOXES

- 3. NO TURN ON RED SIGNS
- 4. GREEN INTERSECTION MARKINGS

- 5. REFRESHED CROSSWALK MARKINGS



CASE STUDY: MILWAUKEE SAFETY IMPROVEMENTS



WHY WERE THESE SAFETY IMPROVEMENT NEEDED?

- This section of Milwaukee was identified as **Vision Zero High Crash Corridor**
- Milwaukee Avenue experienced a **high number of crashes for people walking and biking**
- The prior design **didn't reflect how people use the street**—walking, biking, and taking transit

SAFETY IMPROVEMENT RESULTS

- Crashes **DECREASED -56%**
- Injury Producing Crashes **DECREASED -71%**
- **ZERO** Pedestrian crashes
- Dooring crashes were **eliminated**
- **Lower traffic speeds**

