

PROTECT
CHICAGO ★

PROTEGE A
CHICAGO ★

Chicago COVID-19 Community Transmission Matrix

	Very high transmission	Higher transmission	Moderate transmission	Lower transmission	Controlled transmission
COVID-19 cases diagnosed per day <small>Chicago residents 7-day rolling daily average</small>	800+	400 – 799	200 – 399	20 – 199 Current: 185 Increasing	<20
COVID-19 test positivity <small>Chicago residents 7-day rolling daily average</small>	10%+	6.6 - 9.9%	5.0 - 6.5%	2 - 4.9% current: 2.9% Increasing	<2%
Hospital beds (non-ICU) occupied by COVID patients <small>Chicago hospitals 7-day rolling daily average</small>	1250+	750-1249	250 - 749	100 – 249 current: 110 Increasing	<100
ICU beds occupied by COVID patients <small>Chicago hospitals 7-day rolling daily average</small>	400+	300 - 399	100 – 299	20 - 99 current: 37 Increasing	<20



CDC Level of Community Transmission Indicators

Level of Community Transmission	Number of U.S. Counties at this Level	Percent of U.S. Counties at this Level	Percentage Point Difference Since 7 Days Ago
High	1608	49.94%	18.01%
Substantial	537	16.68%	-0.75%
Moderate	797	24.75%	-10.62%
Low	277	8.6%	-6.65%

Indicator - If the two indicators suggest different transmission levels, the higher level is selected	Low Transmission Blue	Moderate Transmission Yellow	Substantial Transmission Orange	High Transmission Red
Total new cases per 100,000 persons in the past 7 days	0-9.99	10-49.99	50-99.99	≥100
Percentage of NAATs ¹ that are positive during the past 7 days	0-4.99%	5-7.99%	8-9.99%	≥10.0%

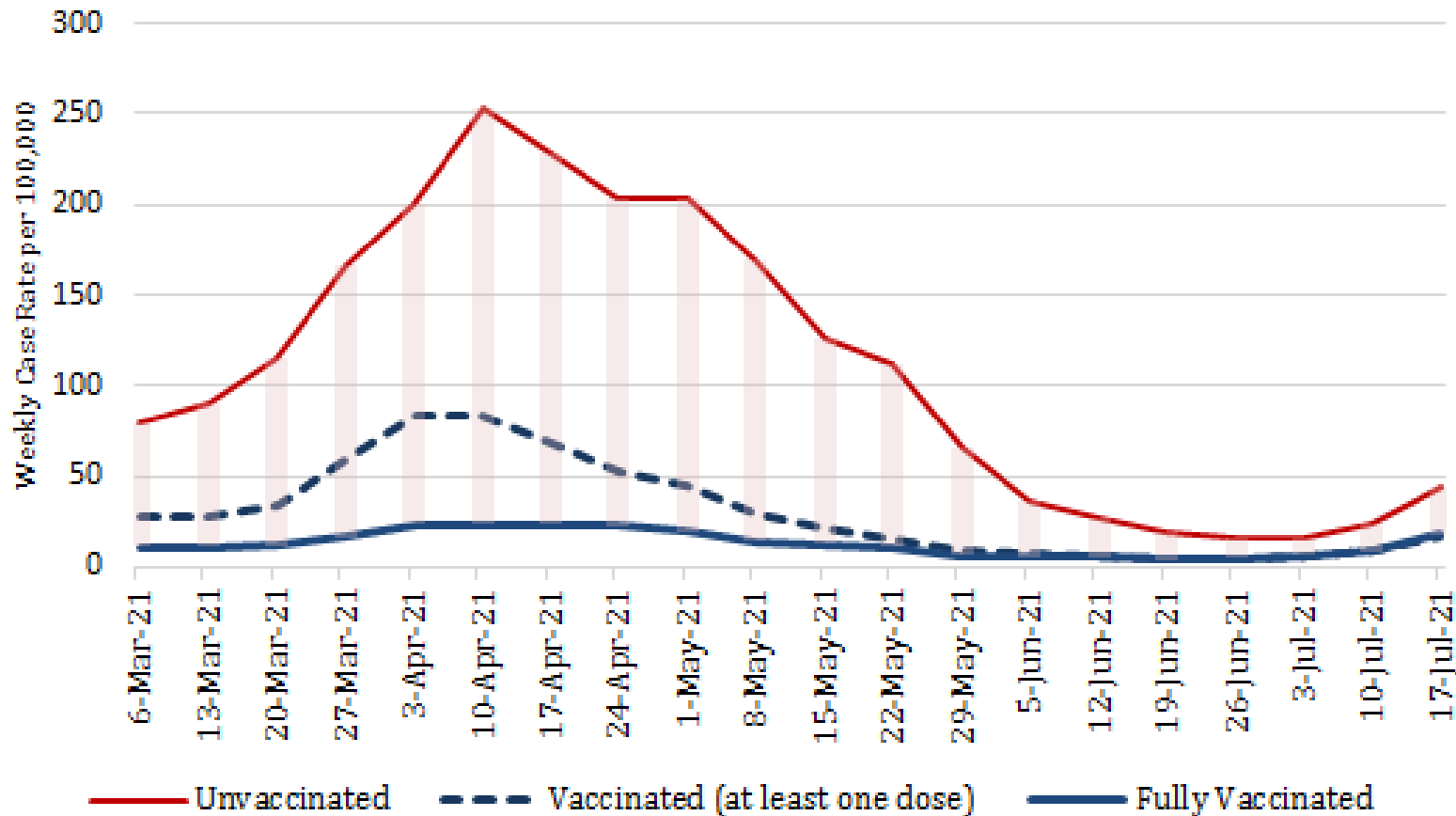
In Chicago:
~200 cases/day

In Chicago:
~400 cases/day

In Chicago, **unvaccinated** people remain much more likely to be diagnosed with COVID-19 than partially or fully vaccinated people



Weekly Chicago Case Rate per 100,000 by Vaccination Status

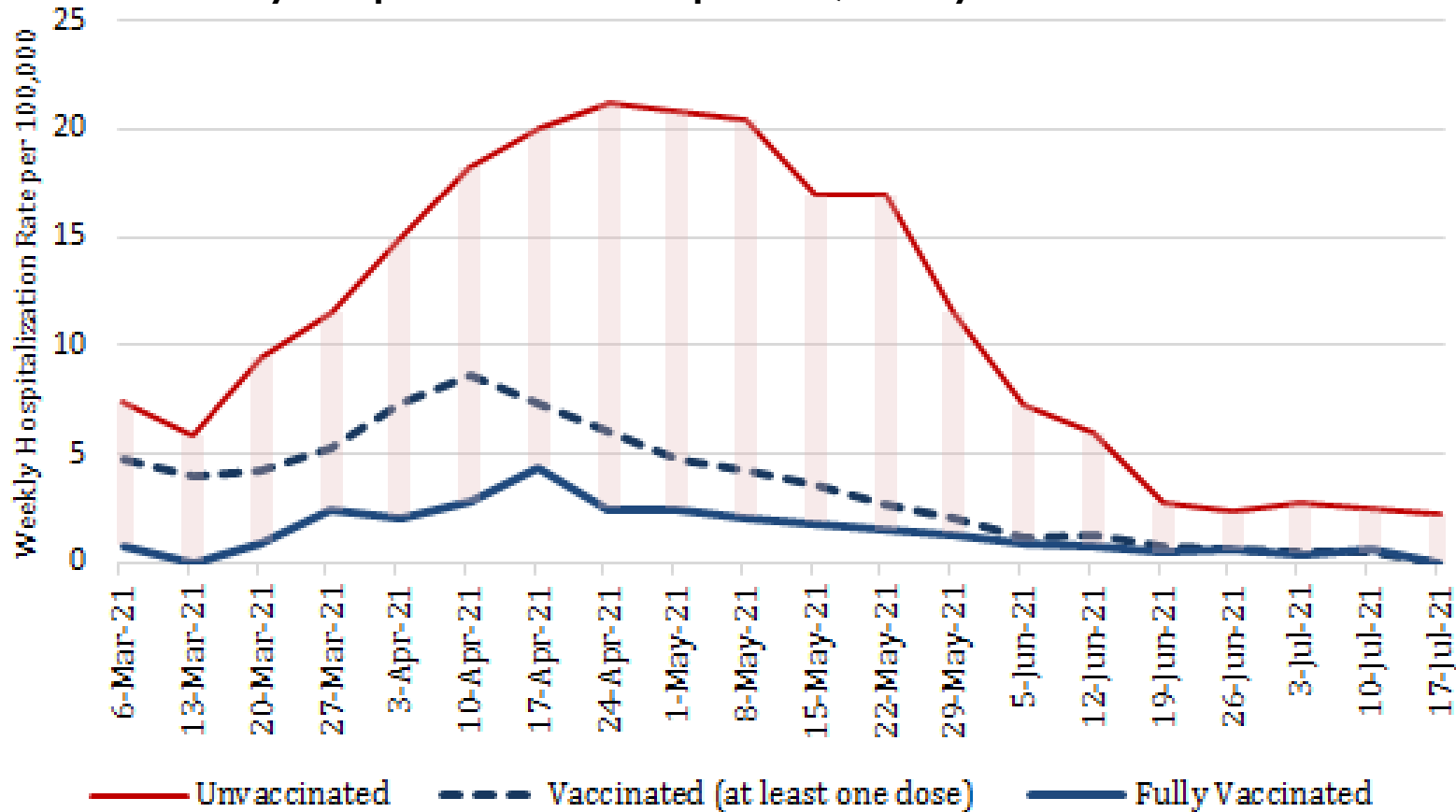


Notes: Includes cases among Chicago residents reported into the Illinois Electronic Disease Surveillance System (I-NEDSS) with date of specimen collection 1/1/21-7/17/21, pulled 7/20/2021. Vaccination status obtained from the Illinois Comprehensive Automated Immunization Registry (I-CARE) registry; Vaccinated defined as having had at least one dose **prior to** a positive test. Rate for vaccinated calculated as total cases divided by cumulative vaccinated at the end of each week, multiplied by 100,000. Rate for unvaccinated calculated as total cases divided by total population minus cumulative vaccinated at the end of each week, multiplied by 100,000.

In Chicago, **unvaccinated** people remain much more likely to be hospitalized with COVID-19 than partially or fully vaccinated people



Weekly Hospitalization Rate per 100,000 by Vaccination Status

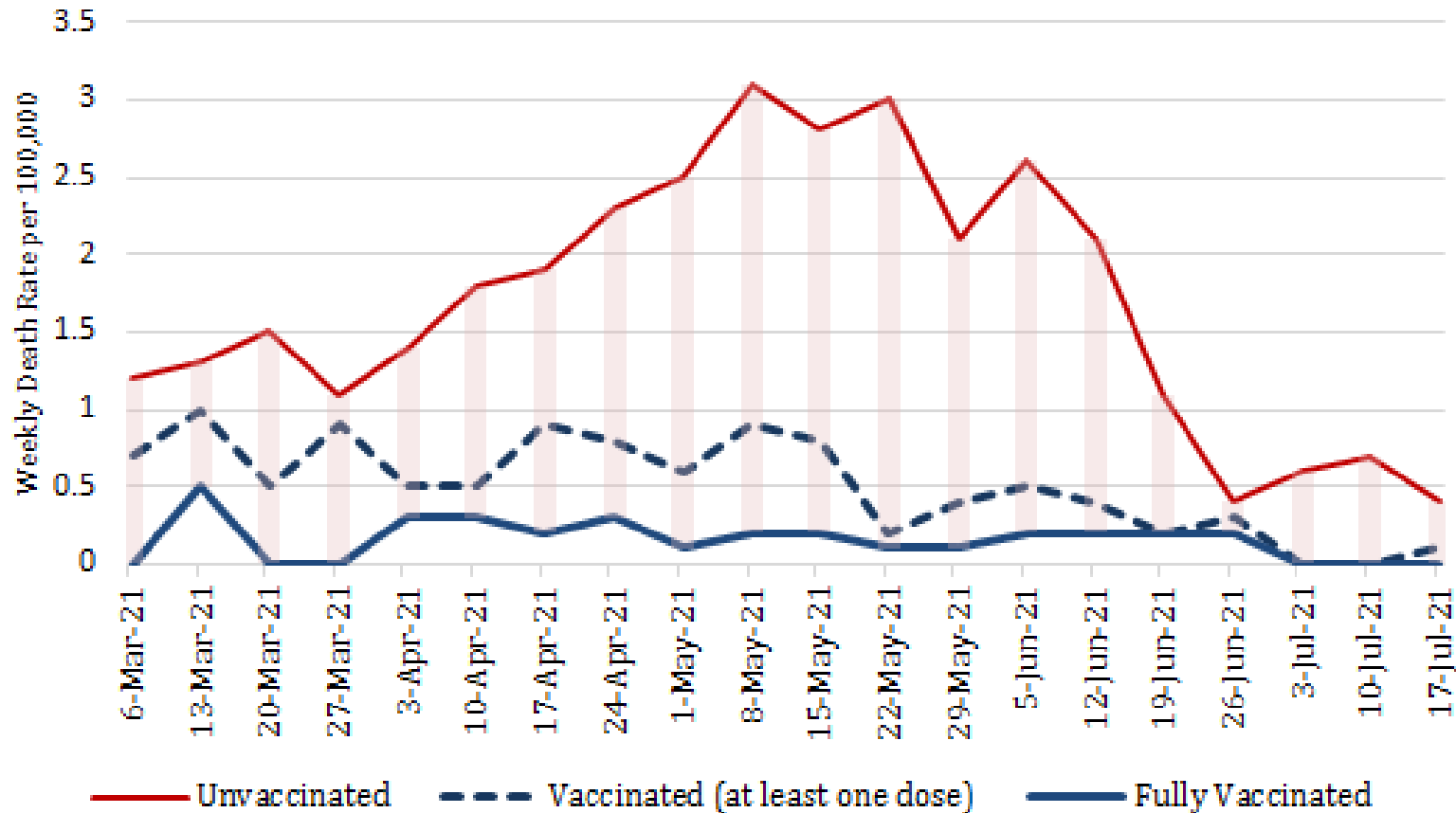


Notes: Includes cases among Chicago residents reported into the Illinois Electronic Disease Surveillance System (I-NEDSS) with date of specimen collection 1/1/21-7/17/21, pulled 7/20/2021. Vaccination status obtained from the Illinois Comprehensive Automated Immunization Registry (I-CARE) registry; Vaccinated defined as having had at least one dose **prior to** a positive test. Rate for vaccinated calculated as total hospitalized cases divided by cumulative vaccinated at the end of each week, multiplied by 100,000. Rate for unvaccinated calculated as total hospitalized cases divided by total population minus cumulative vaccinated at the end of each week, multiplied by 100,000.

In Chicago, **unvaccinated** people remain much more likely to die from COVID-19 than **partially** or **fully vaccinated** people



Weekly Chicago Death Rate per 100,000 by Vaccination Status



Notes: Includes cases among Chicago residents reported into the Illinois Electronic Disease Surveillance System (I-NEDSS) with date of specimen collection 1/1/21-7/17/21, pulled 7/20/2021. Vaccination status obtained from the Illinois Comprehensive Automated Immunization Registry (I-CARE) registry; Vaccinated defined as having had at least one dose **prior to** a positive test. Rate for vaccinated calculated as total cases known to have died divided by cumulative vaccinated at the end of each week, multiplied by 100,000. Rate for unvaccinated calculated as total cases known to have died divided by total population minus cumulative vaccinated at the end of each week, multiplied by 100,000.

PROTECT
CHICAGO ★

PROTEGE A
CHICAGO ★