



# Protecting Chicago: Phase IV Re-Opening Metrics Update

**June 4th, 2021**

**(Data current through 6/2/2021)**

# Chicago COVID-19 Community Metrics, Phase IV, current status

	Risk/Trajectory as of 6/3/2021	Very high risk	High risk	Moderate risk	Lower risk	Controlled transmission
COVID cases diagnosed per day Chicago residents 7-day rolling daily average	<b>LOWER DECLINING</b> <b>129</b>	800+ -or- 7+ consecutive days more than 15% higher than daily average one week prior	400 - 799 -or- 5+ consecutive days more than 10% higher than daily average one week prior	200 - 399 -and- decreasing or stable compared to daily average one week prior	20 - 199 -and- decreasing or stable compared to daily average one week prior	<20
COVID test positivity Chicago residents 7-day rolling daily average	<b>LOWER DECLINING</b> <b>1.9%</b>	10%+ -or- 7+ consecutive days more than 15% higher than daily average one week prior	6.6 - 9.9% -or- 5+ consecutive days more than 10% higher than daily average one week prior	5.0 - 6.5% -and- decreasing or stable compared to daily average one week prior	2 - 4.9% -and- decreasing or stable compared to daily average one week prior	<2%
Emergency dept visits for COVID- like illness Chicago hospitals 7-day rolling daily average	<b>LOWER DECLINING</b> <b>52</b>	90+ -or- 7+ consecutive days more than 15% higher than daily average one week prior	80-89 -or- 5+ consecutive days more than 10% higher than daily average one week prior	60 - 79 -and- decreasing or stable compared to daily average one week prior	20 - 59 -and- decreasing or stable compared to daily average one week prior	<20
Non-ICU beds occupied by COVID patients Chicago hospitals 7-day rolling daily average	<b>LOWER DECLINING</b> <b>214</b>	1250+ or- 7+ consecutive days more than 15% higher than daily average one week prior	750 - 1249 -or- 5+ consecutive days more than 10% higher than daily average one week prior	250 - 749	100 - 249	<100
ICU beds occupied by COVID patients Chicago hospitals 7-day rolling daily average	<b>LOWER DECLINING</b> <b>81</b>	400+ -or- <20% overall ICU bed availability	300 - 399 -or- <22% overall ICU bed availability	100 - 299	20 - 99	<20



# **COVID-19 Outcomes by Race/Ethnicity and Geography**

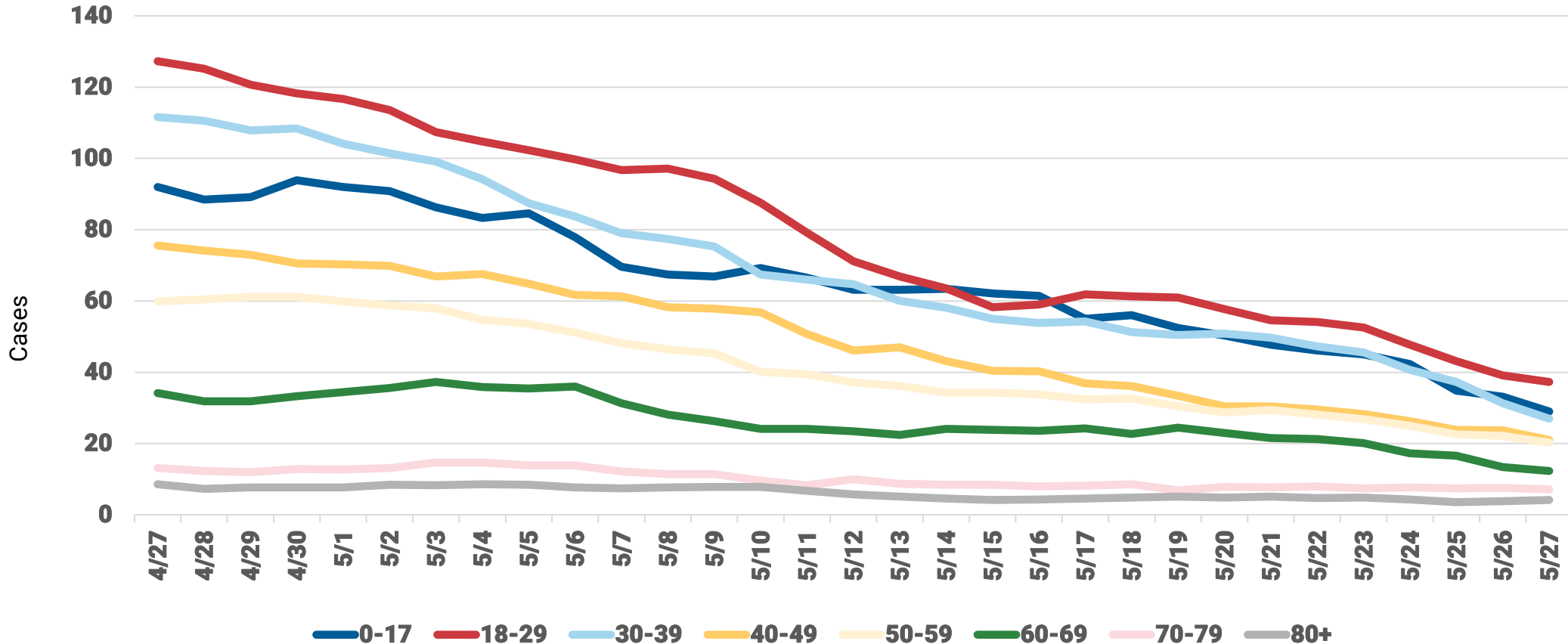


# Diagnosed Cases

# Incident cases are highest for 18-29 year olds. All age groups are declining.



COVID-19 Cases, on Specimen Date, by Age Group, rolling 7-day average

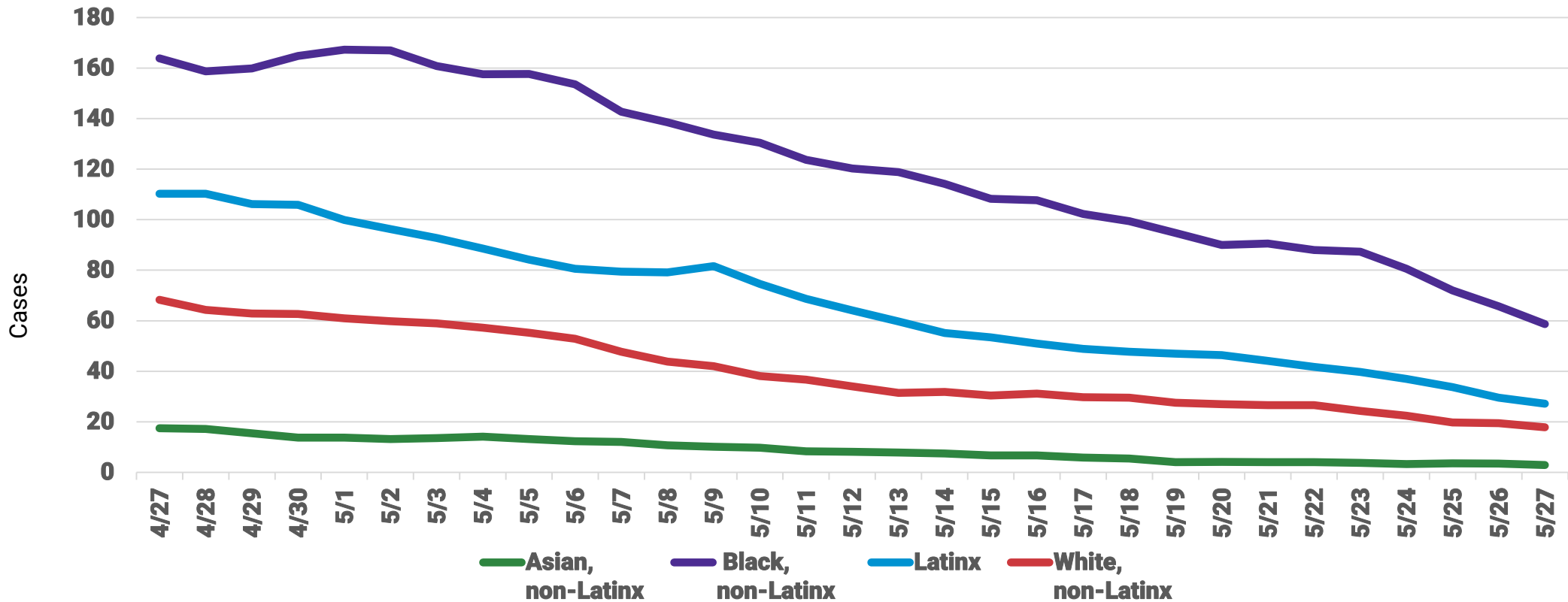


Daily COVID-19 cases with known specimen report date and race/ethnicity information. Case is defined as positive result on PCR or antigen test. This case definition was applied to the entire epidemic beginning on 2/8/2021 therefore these results are different from results reported prior. Source: INEDSS.

# Incident cases are highest for Black, non-Latinx Chicagoans. All groups are declining.



COVID-19 Cases, on Specimen Date, by Race/Ethnicity, rolling 7-day average



Daily COVID-19 cases with known specimen report date and race/ethnicity information. Case is defined as positive result on PCR or antigen test. This case definition was applied to the entire epidemic beginning on 2/8/2021 therefore these results are different from results reported prior. Source: INEDSS.

# Weekly changes in COVID-19 cases by race/ethnicity and age group for week ending May 29<sup>h</sup> (comparisons to week ending May 22<sup>nd</sup>)



Age Group (years)	Latinx	% of Age grp	Change from last week	Black, NL	% of Age grp	Change from last week	White, NL	% of Age grp	Change from last week	Asian, NL	% of Age grp	Change from last week	Total (percent)	Change from last week
0-17	49	<b>41%</b>	<b>-42</b>	43	36%	<b>-63</b>	18	15%	<b>-7</b>	2	2%	-3	168 (18%)	-156
18-44	105	29%	<b>-65</b>	191	<b>52%</b>	<b>-134</b>	41	11%	<b>-73</b>	12	3%	-3	<b>453 (48%)</b>	-383
45-64	36	19%	<b>-21</b>	108	<b>58%</b>	<b>-70</b>	34	18%	<b>-24</b>	1	1%	-6	225 (24%)	-160
65+	12	13%	<b>-2</b>	48	<b>53%</b>	<b>-13</b>	24	27%	<b>-1</b>	3	3%	-3	98 (10%)	-34
Total	202	27%	<b>-130</b>	390	<b>51%</b>	<b>-280</b>	117	15%	<b>-105</b>	18	2%	-15	944	-733

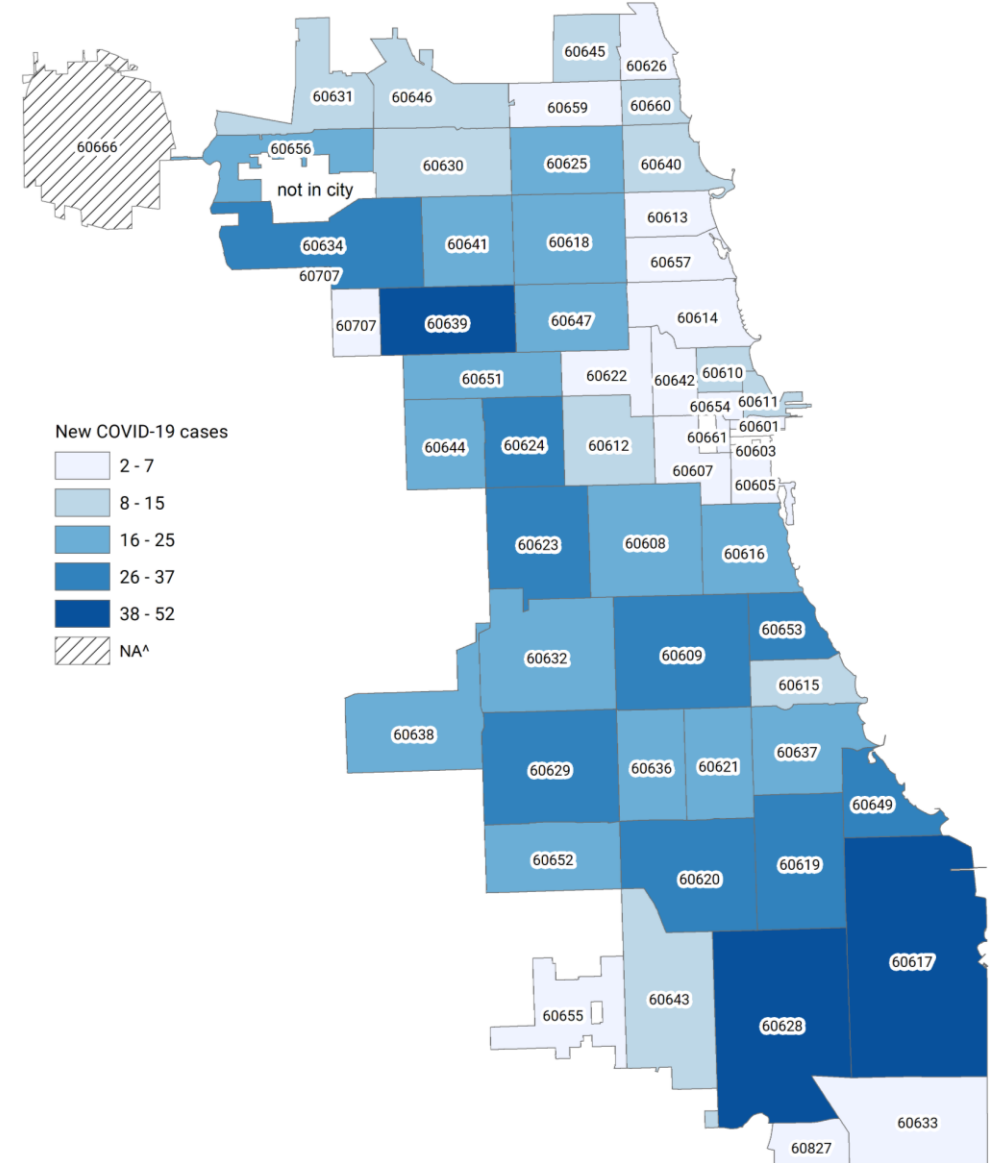
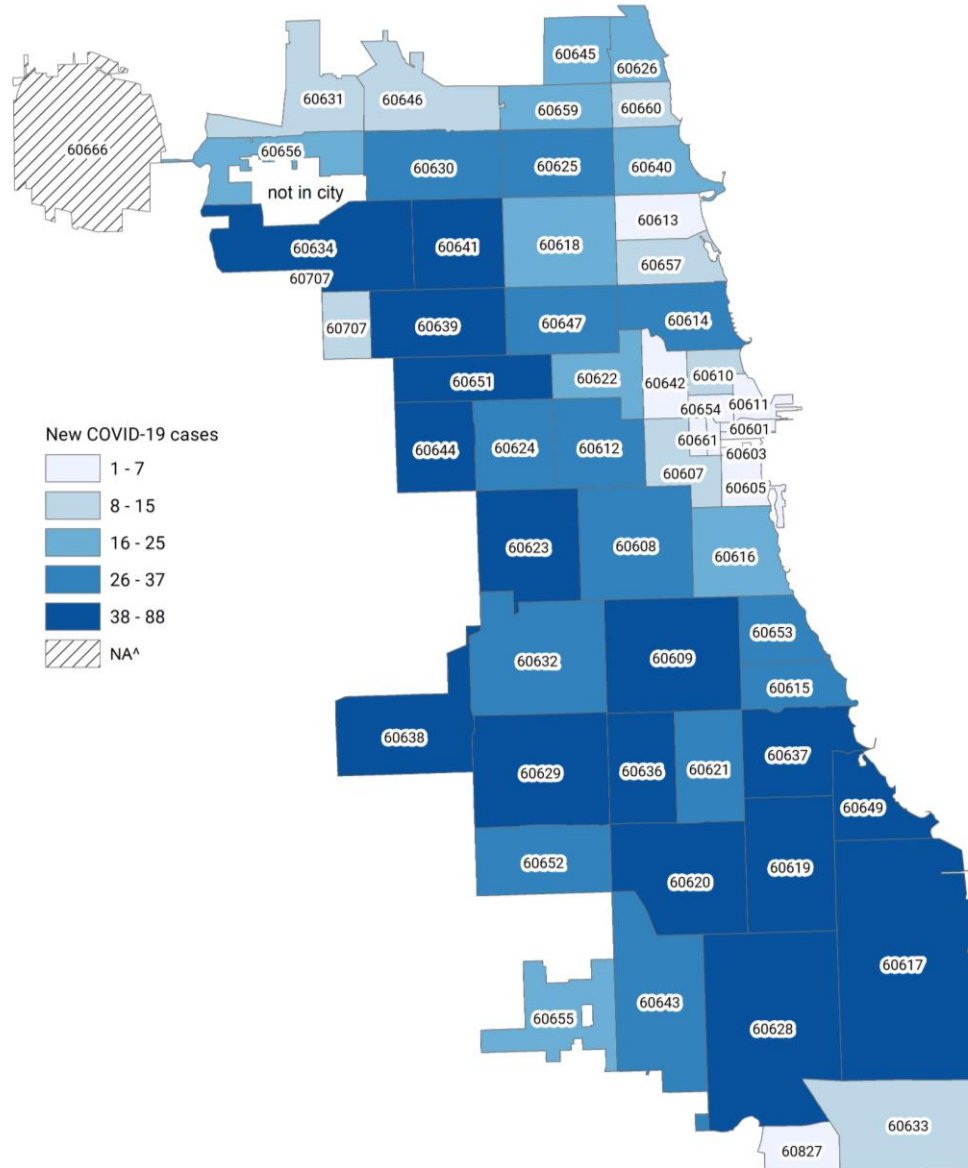
Percentages are computed using confirmed COVID-19 cases with known race/ethnicity.

Data pulled Wednesday 6/2/21

# Changes in weekly case counts by zip code

Week ending 5/22/21 (n=1,677)

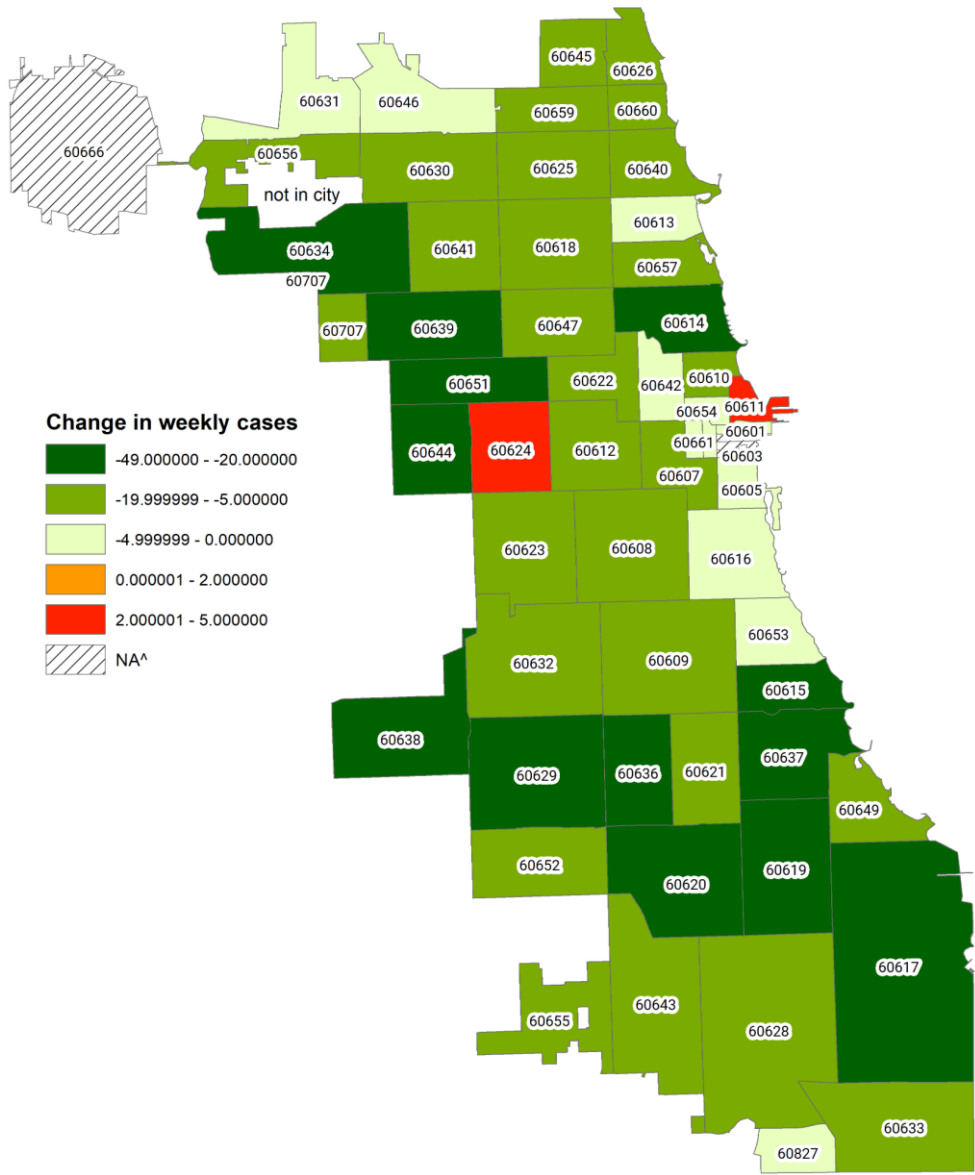
Week ending 5/29/21 (n=944)



Note: Week is data through the Wednesday after the end date for the week. Week 21 ending May 29<sup>th</sup> and week 20 ending May 22<sup>nd</sup>



# Changes in weekly case counts by zip code week ending May 29<sup>th</sup> compared to week ending May 22<sup>nd</sup>

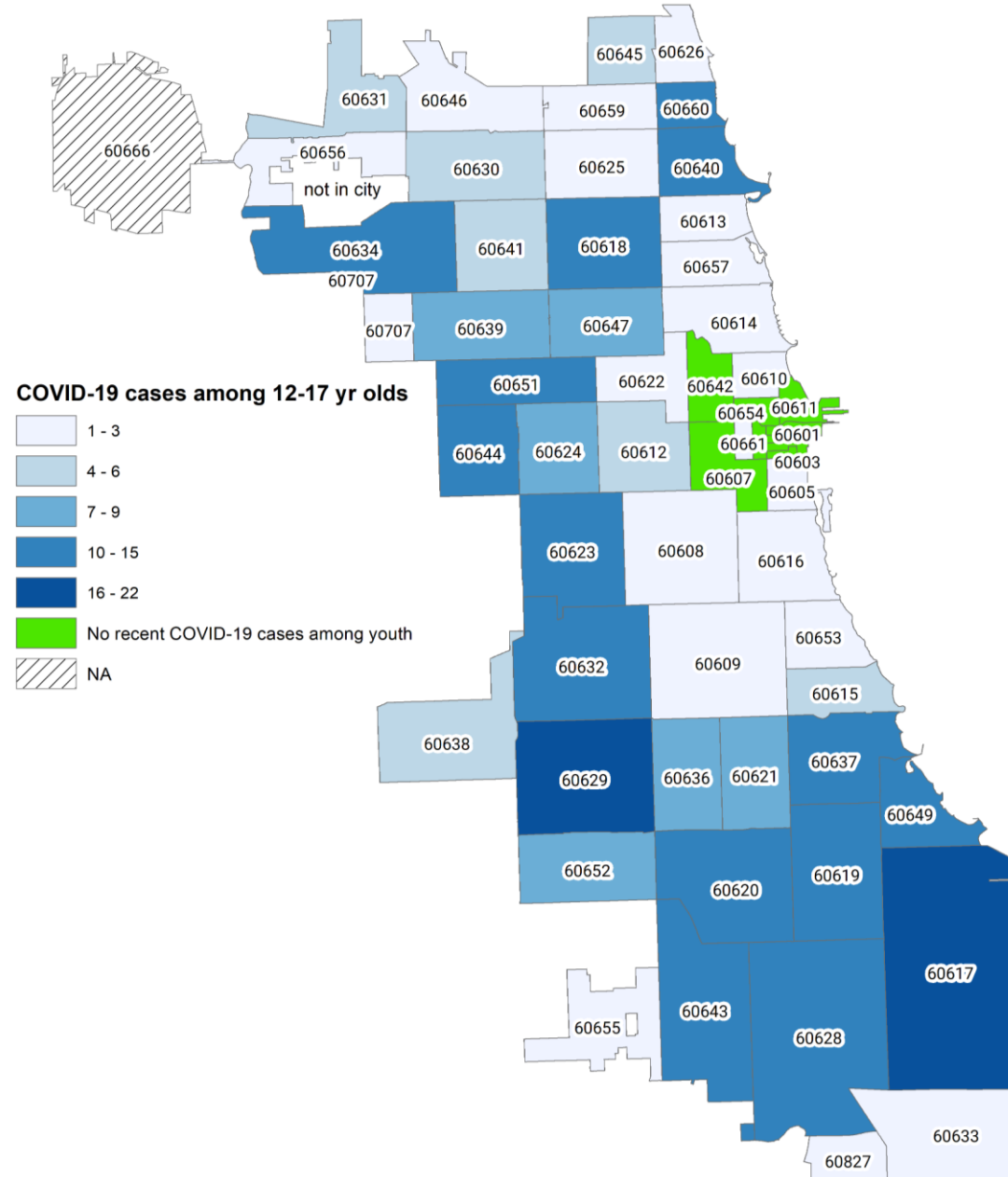


**Change in weekly cases**

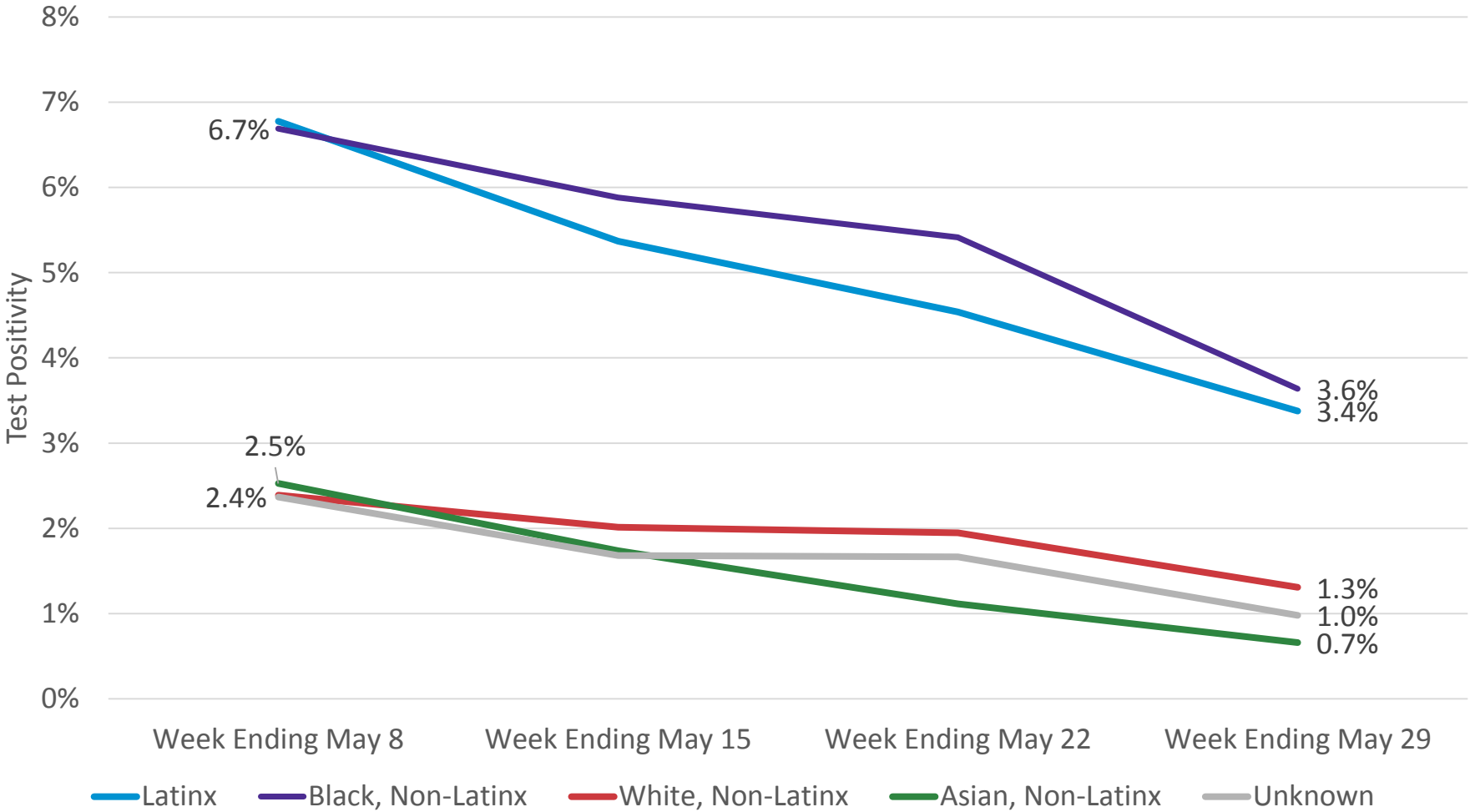
- 49.000000 - -20.000000
- 19.999999 - -5.000000
- 4.999999 - 0.000000
- 0.000001 - 2.000000
- 2.000001 - 5.000000
- NA^

Note: Week is data through the Wednesday after the end date for the week. Week 21 ending May 29<sup>th</sup> and week 20 ending May 22<sup>nd</sup>

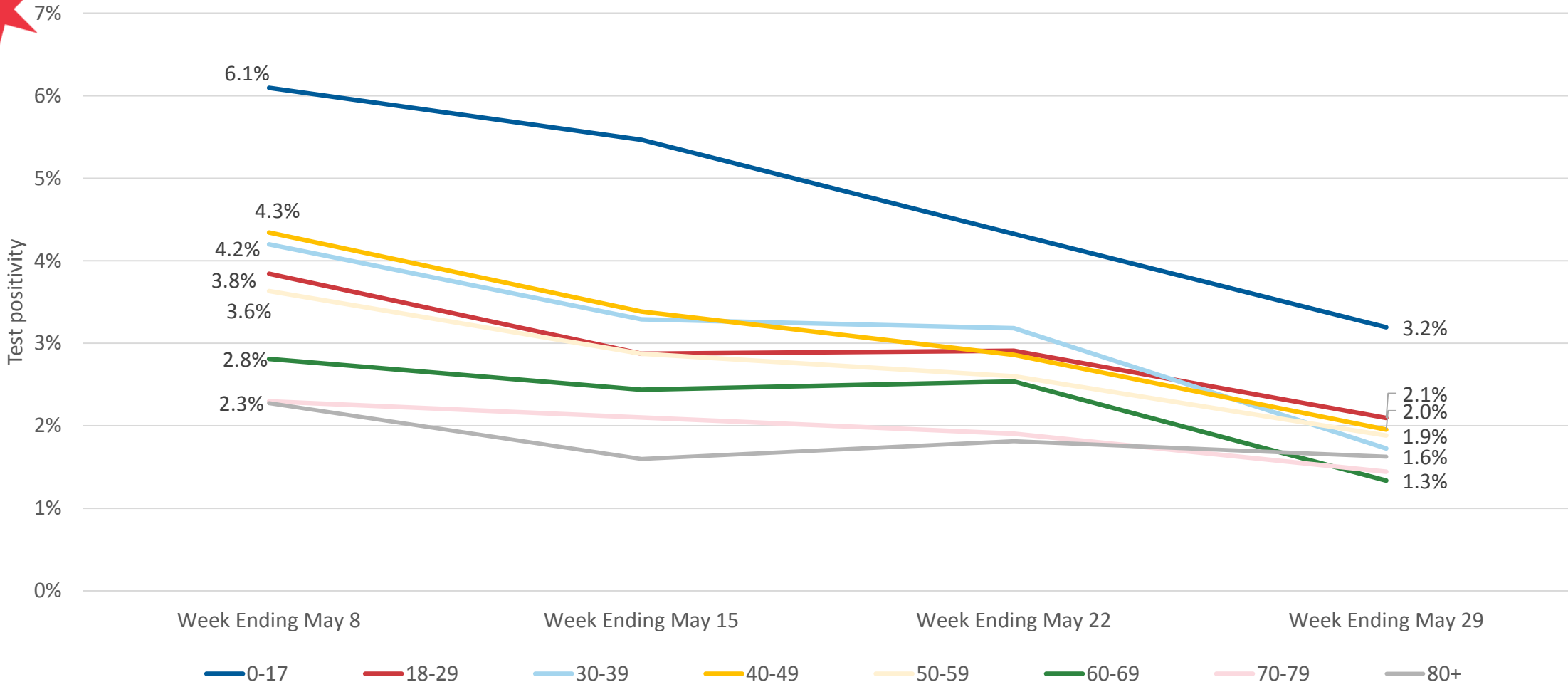
# Recent COVID-19 cases (May 15<sup>th</sup> to May 29<sup>th</sup>) among 12-17-year-olds by Chicago zip code



# Test positivity by Race-Ethnicity (May 2 – May 29, 2021)



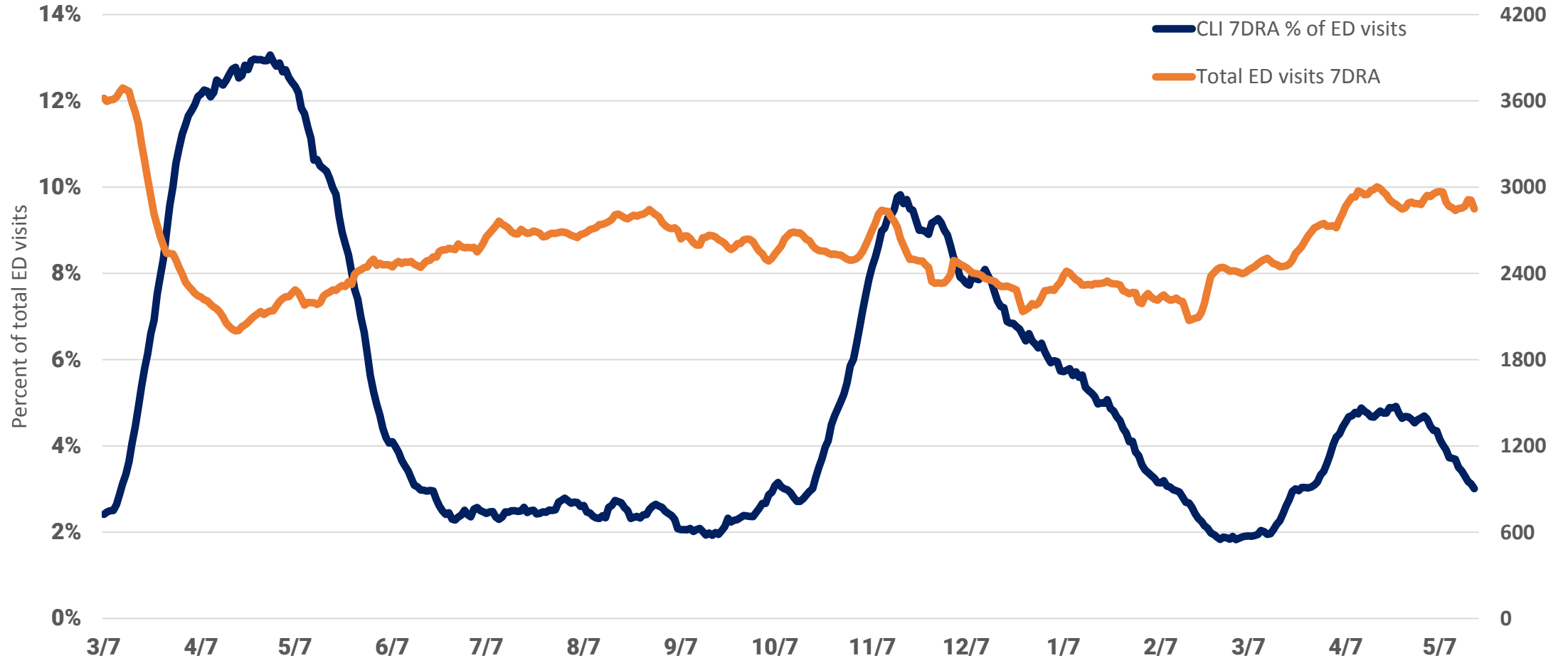
# Test positivity by Age through (May 2 – May 29, 2021)





# Emergency Department Visits

# Cumulative epidemic CLI percentage of ED visits and total ED visits.



Percent of all emergency department visits, reported with COVID-like symptoms among Chicago residents.  
Data Source: Illinois Hospital Emergency Departments reporting to CDPH through the National Syndromic Surveillance Project.



# Hospital admissions

# COVID-19 hospitalizations, entire epidemic with table.



Month	Year	Hospital Admits frequency	Cumulative frequency
March	2020	1,653	1,653
April	2020	4,860	6,513
May	2020	3,250	9,763
June	2020	966	10,729
July	2020	763	11,492
August	2020	785	12,277
September	2020	752	13,029
October	2020	1,743	14,772
November	2020	3,735	18,507
December	2020	2,998	21,505
January	2021	2,066	23,571
February	2021	978	24,549
March	2021	989	25,538
April	2021	1,648	27,186
May	2021	1,085	28,271

COVID-19 Hospital admissions, rolling 7-day average



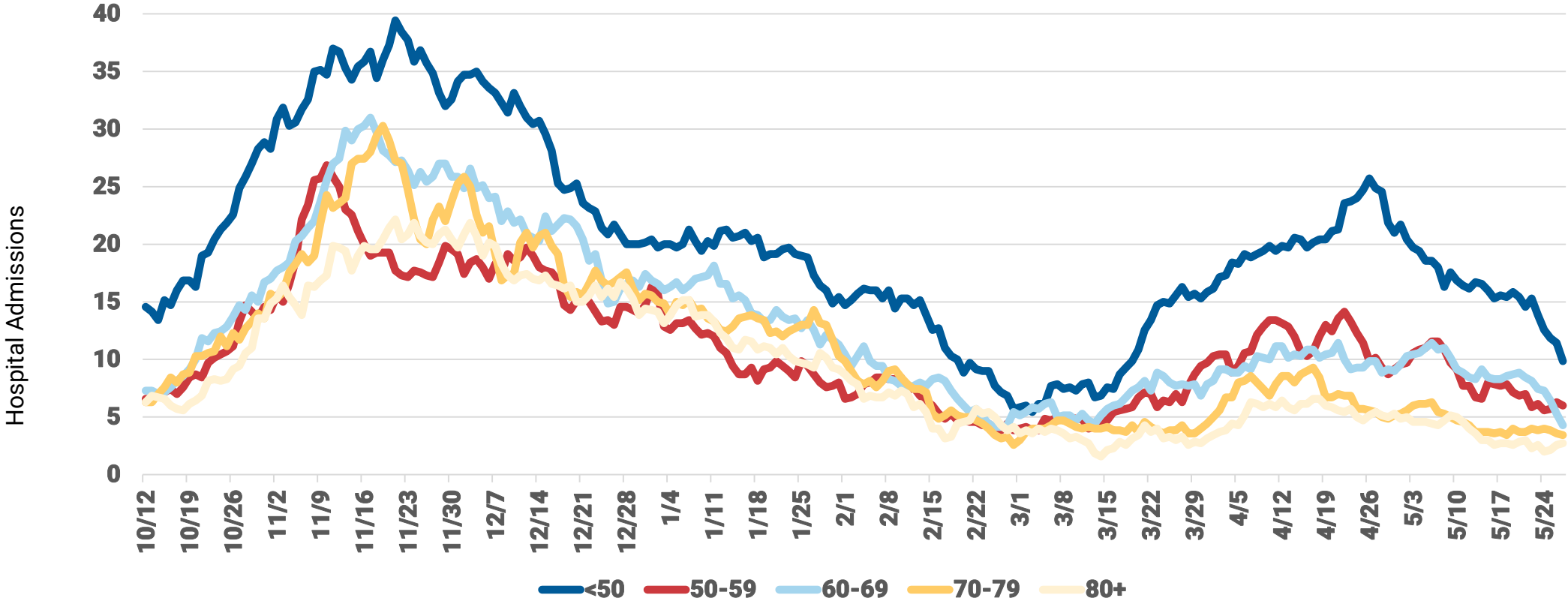
Hospitalizations are reported to CDPH by hospitals into I-NEDSS and ESSENCE and self-reported by patients via an online survey. Daily counts for most recent dates displayed are likely incomplete. Cases who are not indicated to have been hospitalized across any of the three data sources are assumed to not have been hospitalized. Six records with hospital admit dates from January and February 2020 are excluded from this chart. Peak daily admissions based on rolling 7-day average.



# Hospital admissions are declining in most older age groups.



COVID-19 hospital admits, on Specimen Date, by Age Group with finer distinctions amongst oldest strata, rolling 7-day average

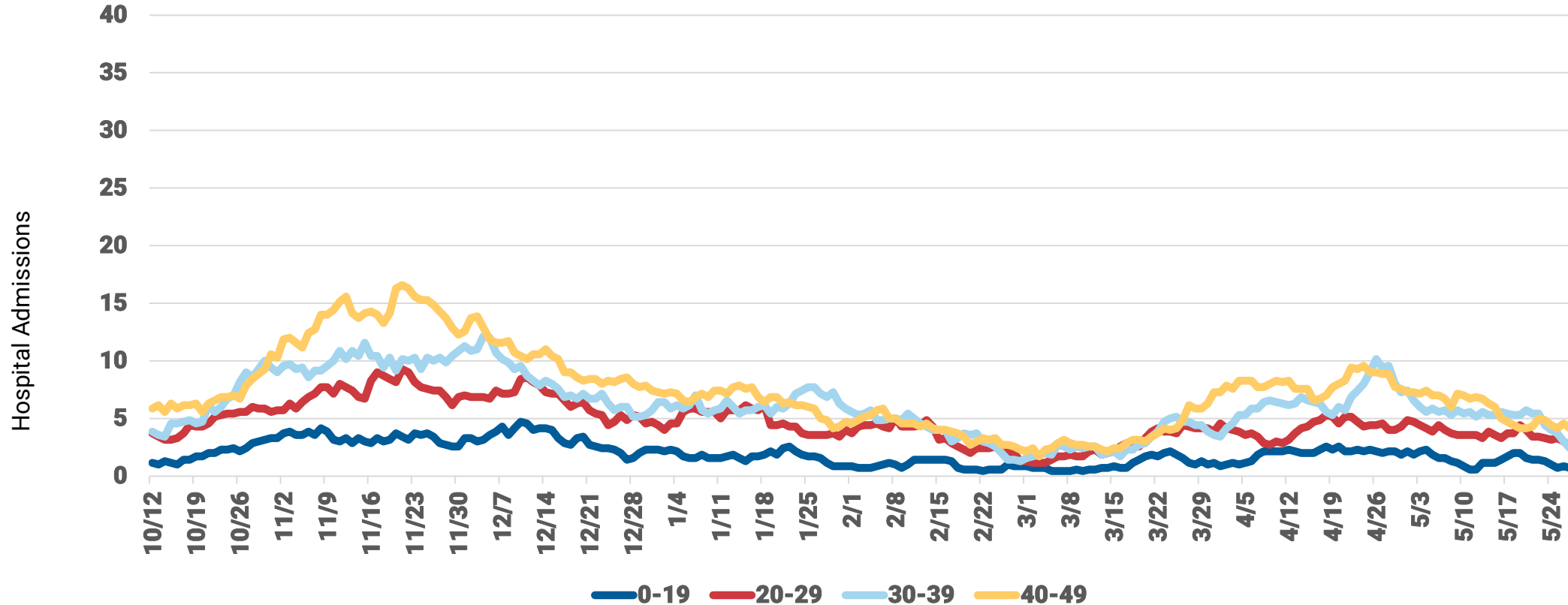


Hospitalizations are reported to CDPH by hospitals into I-NEDSS and ESSENCE and self-reported by patients via an online survey. Daily counts for most recent dates displayed are likely incomplete. Cases who are not indicated to have been hospitalized across any of the three data sources are assumed to not have been hospitalized. Six records with hospital admit dates from January and February 2020 are excluded from this chart. Peak daily admissions based on rolling 7-day average.

# Hospital admissions are flat or declining younger age groups.



COVID-19 Cases, on Specimen Date, by Younger Age Group, rolling 7-day average

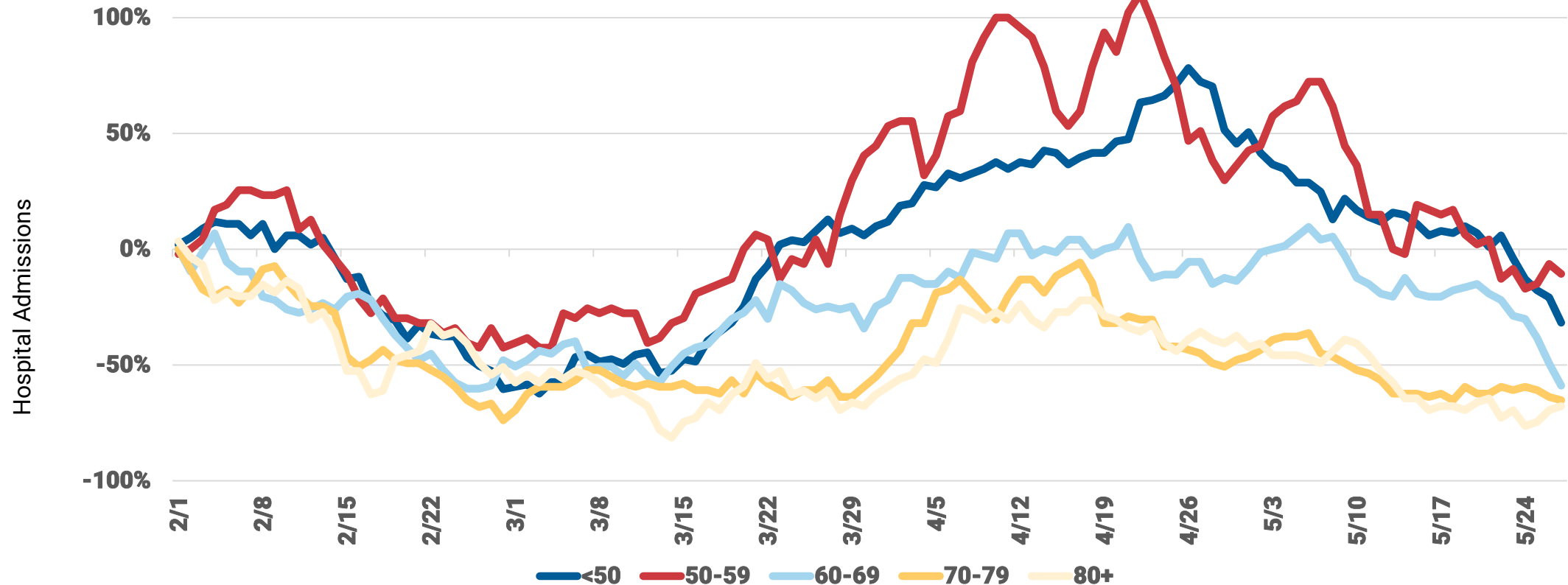


Hospitalizations are reported to CDPH by hospitals into I-NEDSS and ESSENCE and self-reported by patients via an online survey. Daily counts for most recent dates displayed are likely incomplete. Cases who are not indicated to have been hospitalized across any of the three data sources are assumed to not have been hospitalized. Six records with hospital admit dates from January and February 2020 are excluded from this chart. Peak daily admissions based on rolling 7-day average.

# Relative change (2/1/2021 as referent) is better than any time since February 1.



COVID-19 Cases, relative to peak on 2/1/2021, on Specimen Date, by Age Group, rolling 7-day average

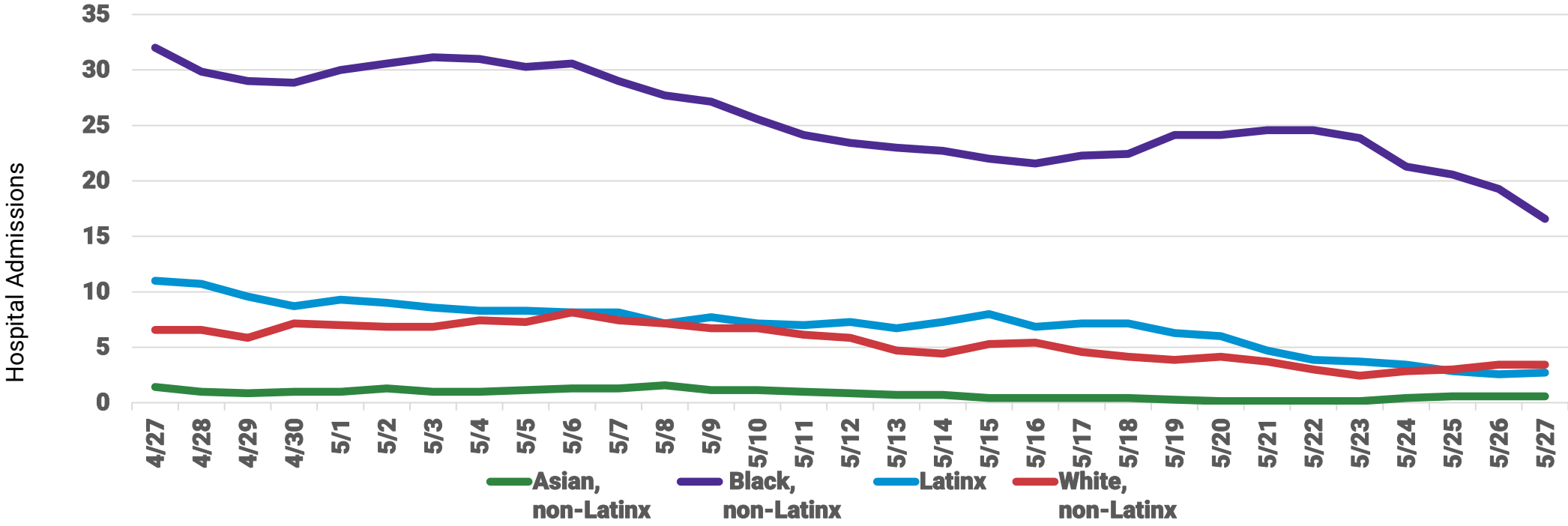


Hospitalizations are reported to CDPH by hospitals into I-NEDSS and ESSENCE and self-reported by patients via an online survey. Daily counts for most recent dates displayed are likely incomplete. Cases who are not indicated to have been hospitalized across any of the three data sources are assumed to not have been hospitalized. Six records with hospital admit dates from January and February 2020 are excluded from this chart. Peak daily admissions based on rolling 7-day average.

# Daily COVID-19 hospital admissions are highest and flat for Black, non-Latinx Chicagoans.



**COVID-19 Hospital Admissions, by Race/Ethnicity, rolling 7-day average, first known hospital admit date**



Hospitalizations are reported to CDPH by hospitals into I-NEDSS and ESSENCE and self-reported by patients via an online survey. Daily counts for most recent dates displayed are likely incomplete. Cases who are not indicated to have been hospitalized across any of the three data sources are assumed to not have been hospitalized. Six records with hospital admit dates from January and February 2020 are excluded from this chart. Peak daily admissions based on rolling 7-day average.

# Recent COVID-19 hospitalizations by race/ethnicity and age group (May 2– May 29, 2021)

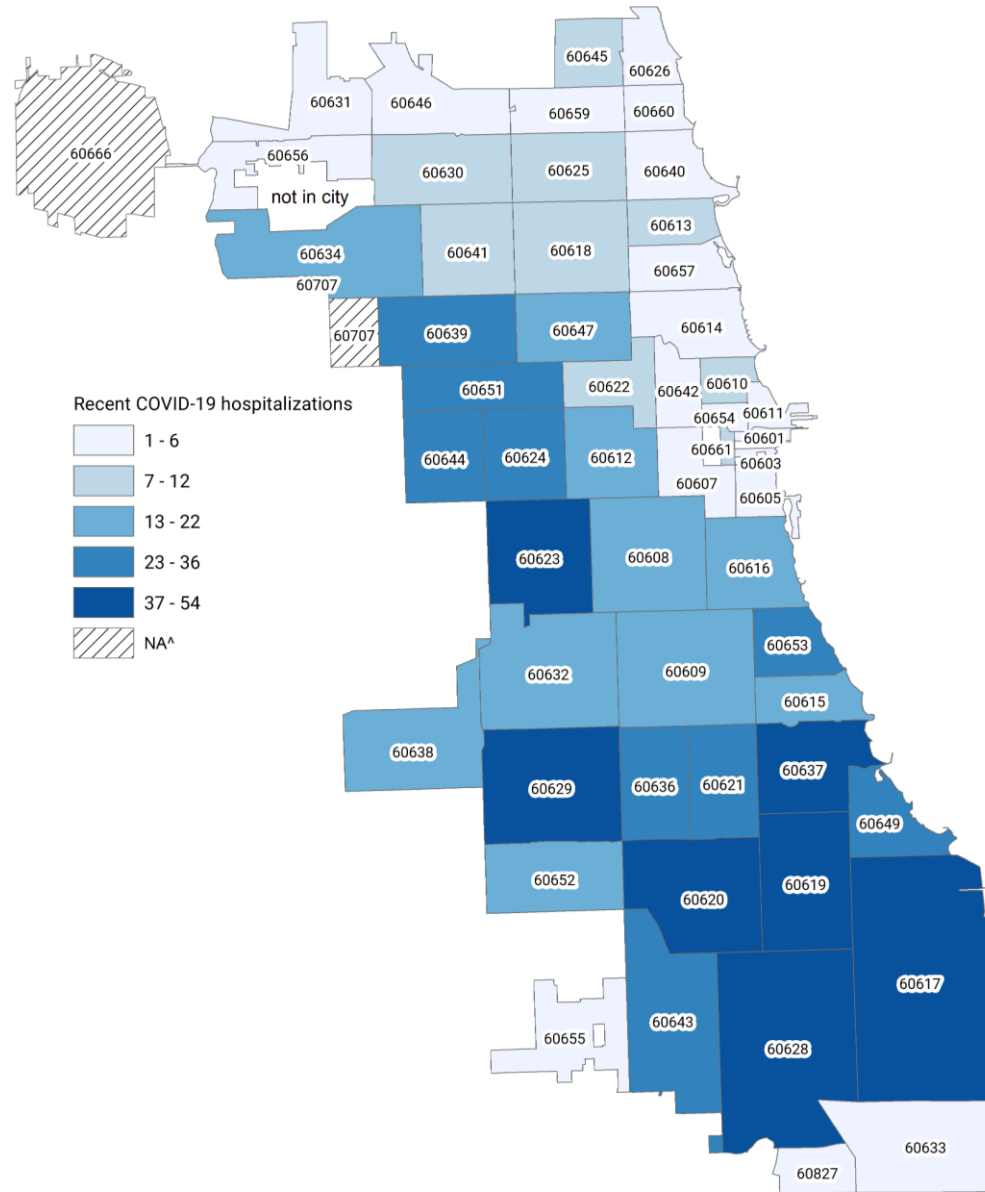


Age Group (years)	Latinx	% of Age grp	Black, NL	% of Age grp	White, NL	% of Age grp	Asian, NL	% of Age grp	Total	Percent
0-17	6	25%	17	<b>71%</b>	1	4%	0	0%	24	3%
18-44	49	20%	163	<b>67%</b>	24	10%	2	1%	273	<b>30%</b>
45-64	34	10%	251	<b>74%</b>	36	11%	8	2%	359	<b>39%</b>
65+	43	17%	155	<b>62%</b>	42	17%	3	1%	266	29%
Total	132	15%	586	<b>68%</b>	103	12%	13	2%	922	

Percentages are computed using COVID-19 hospitalizations with known race/ethnicity.

Data pulled Wednesday 5/26/21

# Recent COVID-19 hospitalizations by Chicago zip code (May 2–May 29, 2021) n=922



Please note that COVID-19 hospitalizations can have significant reporting delays

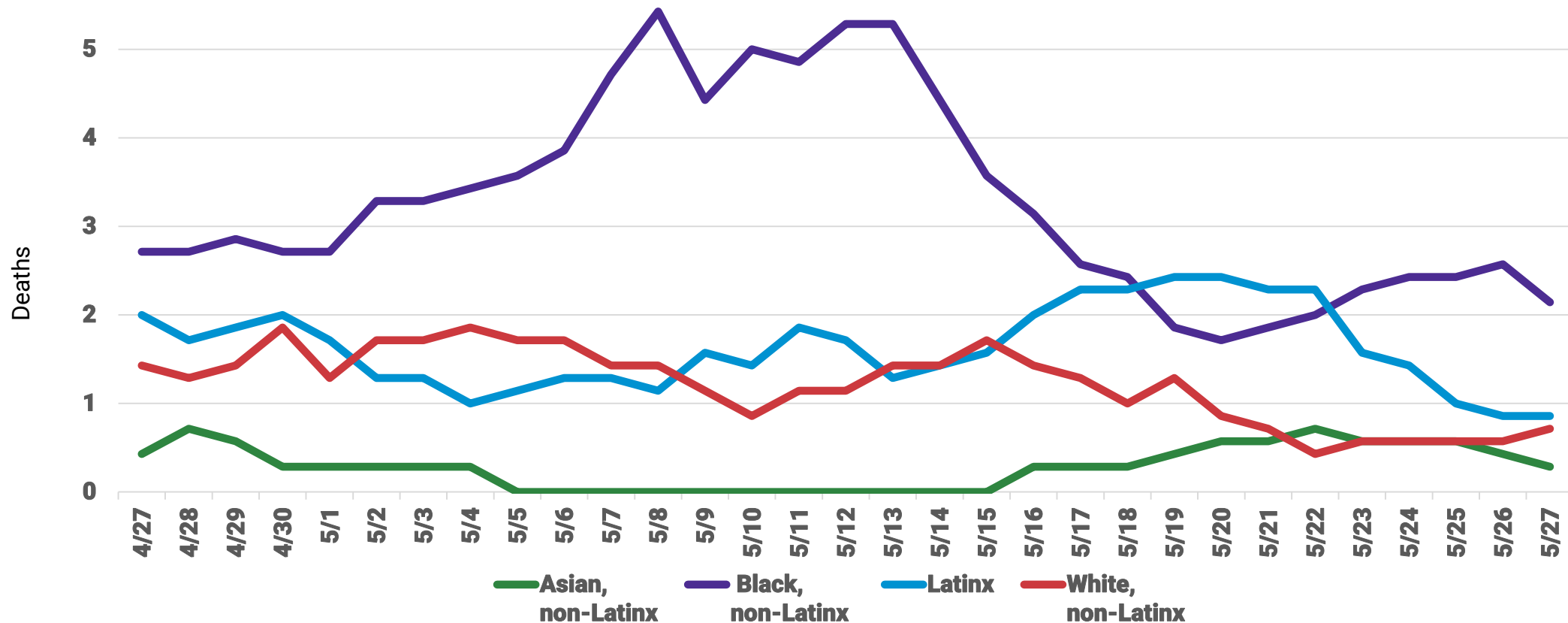


# Deaths

# Daily COVID-19 deaths were highest for Black, non-Latinx and direction varies by Race/Ethnicity.



## COVID-19 Deaths, by Race/Ethnicity, rolling 7-day average



Daily COVID-19 deaths reported for Chicago residents with known death date. Data source: INEDSS. A five day lag is imposed to reduce inaccuracy created by reporting delays.



# Recent COVID-19 deaths (Mar 21 – May 29, 2021) by race/ethnicity and age group

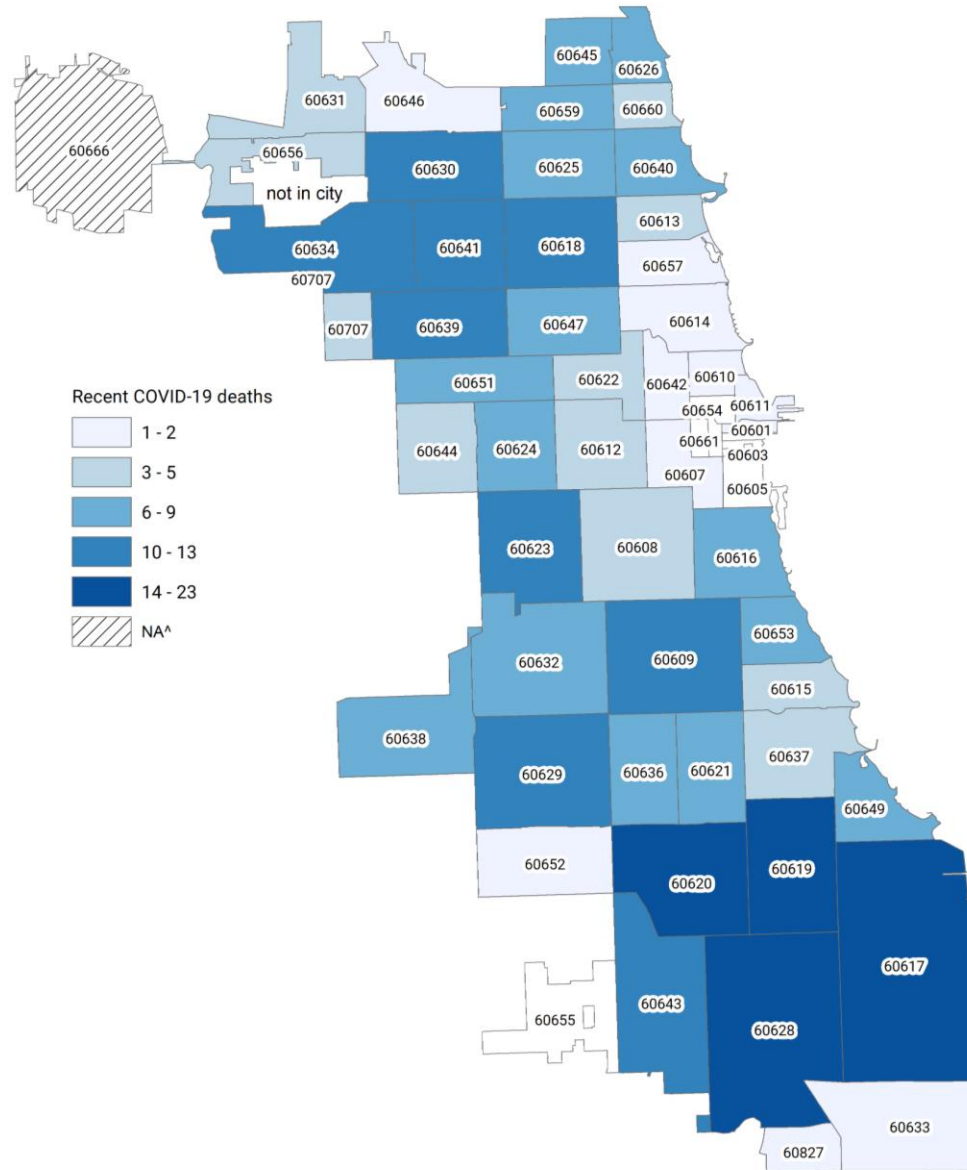


Age Group (years)	Latinx	% of Age grp	Black, NL	% of Age grp	White, NL	% of Age grp	Asian, NL	% of Age grp	Total	Percent
0-17	0	0%	1	0%	0	0%	0	0%	1	0%
18-44	8	33%	12	<b>50%</b>	3	13%	1	4%	24	7%
45-64	37	31%	64	<b>53%</b>	15	12%	5	4%	121	35%
65+	39	20%	95	<b>48%</b>	49	25%	11	6%	199	58%
Total	84	25%	172	<b>50%</b>	67	20%	17	5%	345	100%

Percentages are computed using COVID-19 hospitalizations with known race/ethnicity.

Data pulled Wednesday 5/26/21

# Recent COVID-19 deaths (Mar 21 to May 29, 2021) by Chicago zip code (n=345)



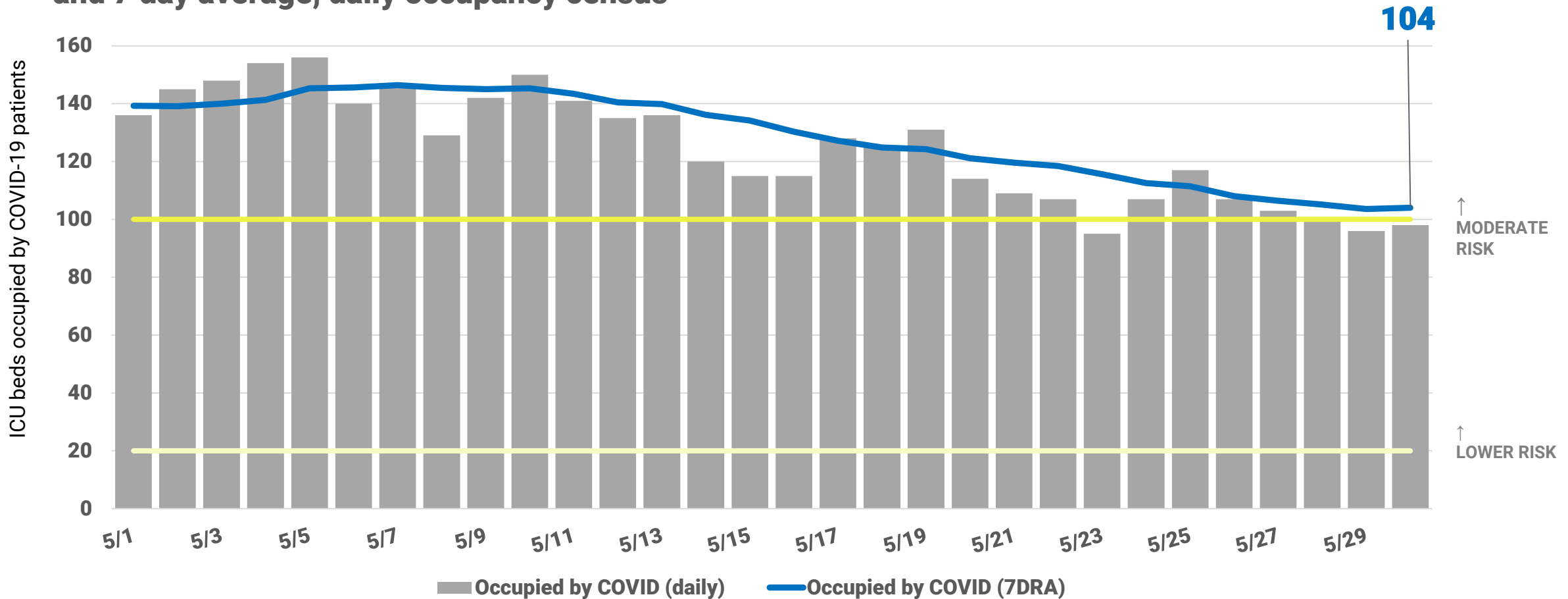


# Hospital System Capacity

# COVID-19 occupied ICU beds risk level is moderate.



ICU beds occupied by COVID-19 patients, daily counts and 7 day average, daily occupancy census

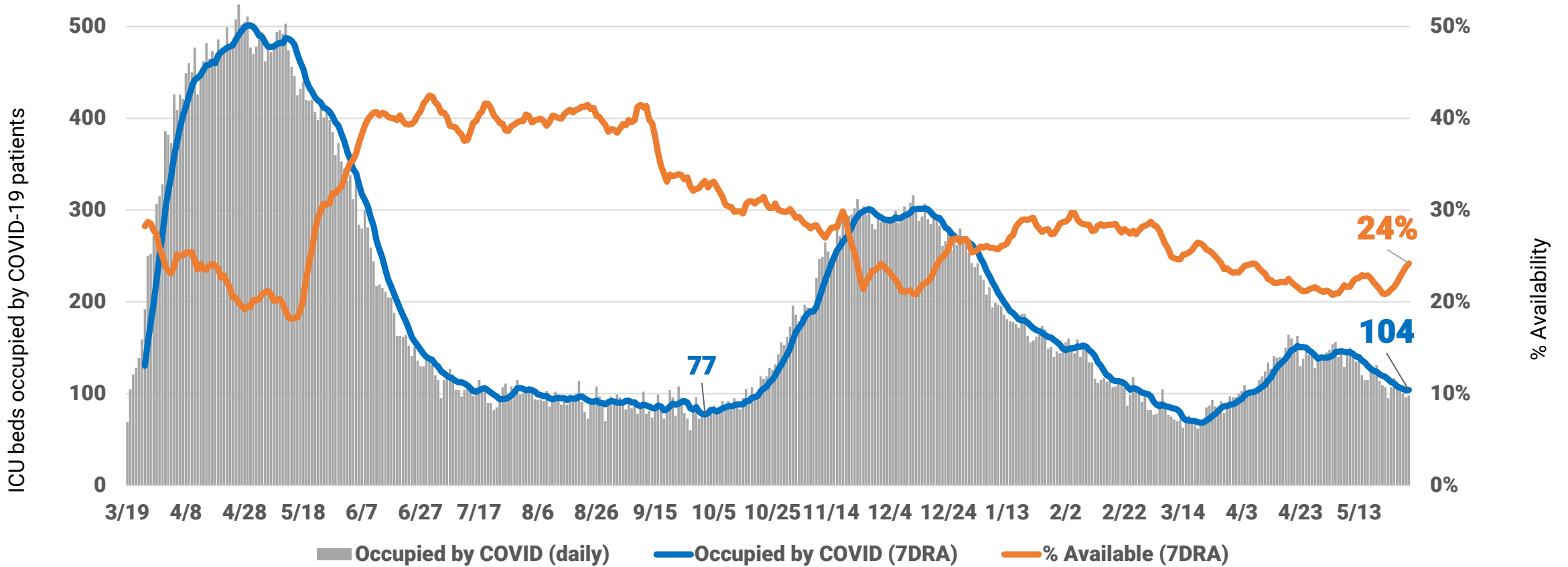


Includes all Chicago hospitals. Hospitals report daily to CDPH via EMResource, beginning March 19. ICU bed count includes all adult and pediatric ICU beds in Chicago hospitals. Includes Chicago and non-Chicago residents. Includes confirmed and suspected COVID-19 cases.

# ICU availability and occupancy from COVID-19 varies.



ICU beds available and occupied by COVID-19 patients, daily counts and 7 day average, daily occupancy census

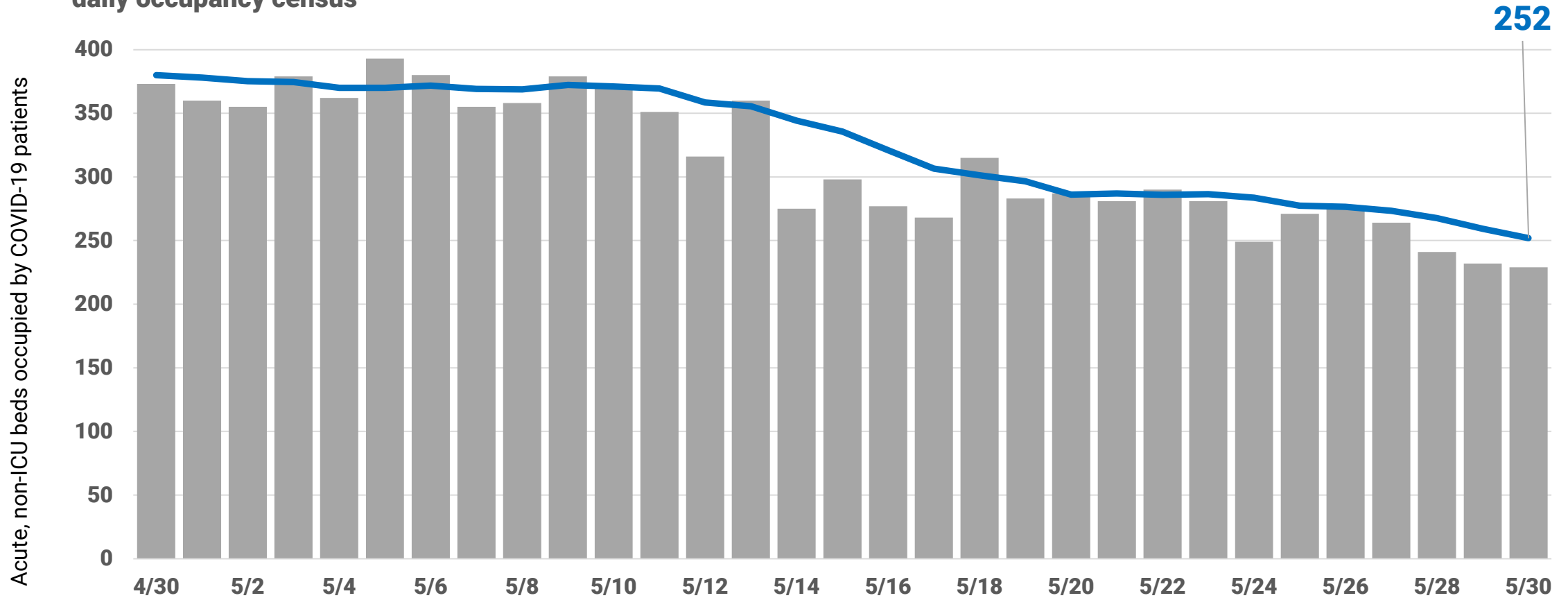


Includes all Chicago hospitals. Hospitals report daily to CDPH via EMResource, beginning March 19. ICU bed count includes all adult and pediatric ICU beds in Chicago hospitals. Includes Chicago and non-Chicago residents. Includes confirmed and suspected COVID-19 cases.

# Acute, non-ICU bed census of COVID patients is declining.



COVID-19 acute/non-ICU beds occupied, daily counts and 7 day average, daily occupancy census



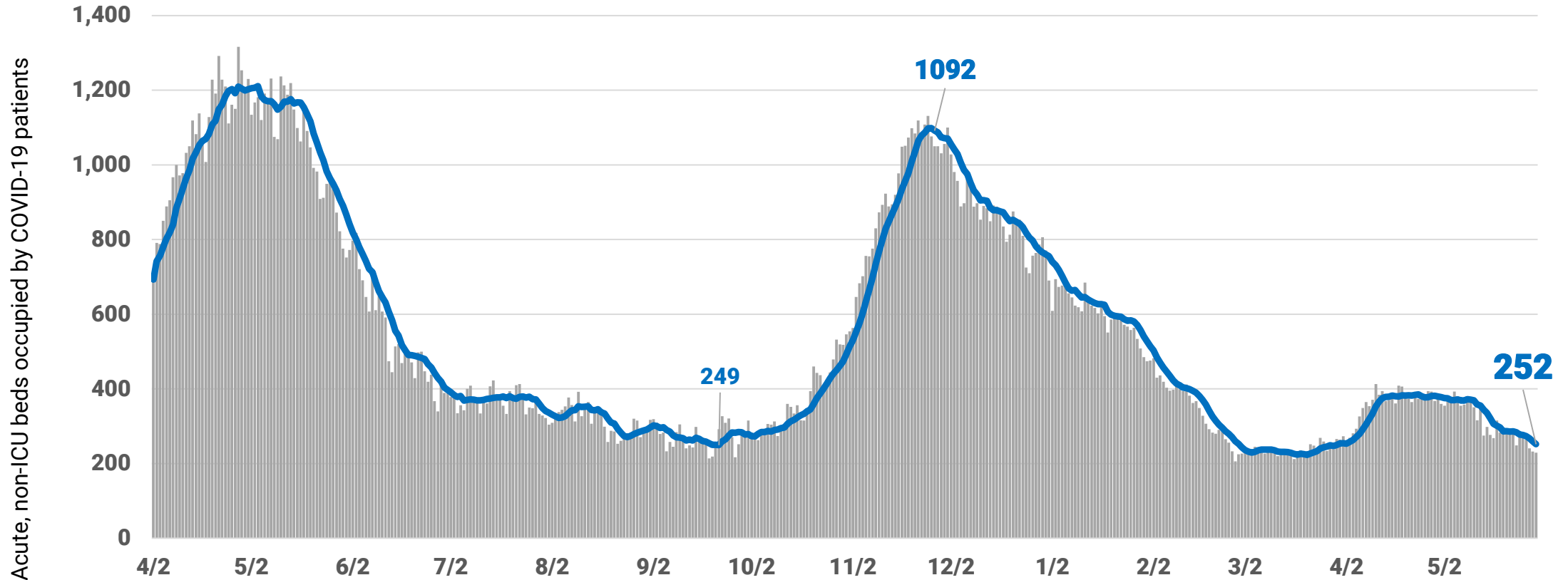
252

Includes all Chicago hospitals. Hospitals report daily to CDPH via EMResource, beginning March 19.. Includes Chicago and non-Chicago residents. Includes confirmed and suspected COVID-19 cases.

# Acute, non-ICU bed census of COVID patients varies over time.



COVID-19 acute/non-ICU beds occupied, daily counts and 7 day average, daily occupancy census



Includes all Chicago hospitals. Hospitals report daily to CDPH via EMResource, beginning March 19.. Includes Chicago and non-Chicago residents. Includes confirmed and suspected COVID-19 cases.