

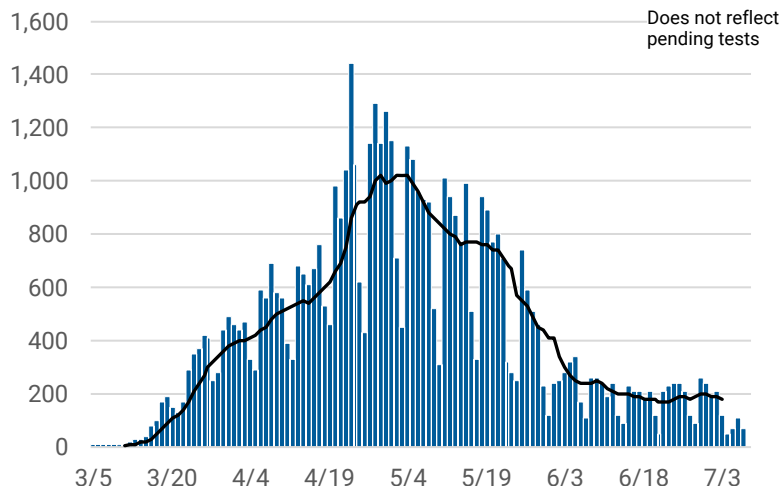


# CHICAGO COVID-19 UPDATE

July 8, 2020

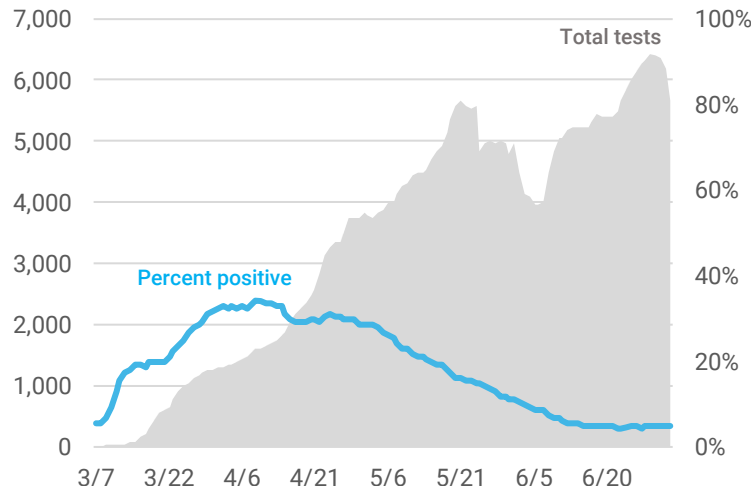
There are **54,050** cases of COVID-19 and **2,653** deaths among Chicago residents as of July 8, 2020. There are an average of **176** new cases and **5** deaths every day. An estimated **49,174** residents have recovered.<sup>1</sup>

Confirmed daily COVID-19 cases and 7-day rolling average



Daily COVID-19 cases reported for Chicago residents with known specimen collection date. Results for several previous days are updated each day. Two cases with specimen collection dates prior to March 1, 2020 are not included in the graph.

COVID-19 testing and percent positivity, 7-day rolling average



Number of tests performed and percentage of tests that were positive averaged over 7 days. Includes molecular tests performed at state and private laboratories with known specimen collection date. Percent positivity is based on individuals tested. Tests performed between Jan 21 and Feb 29, 2020 are not included in graph. CDPH may not receive all non-positive results.

## COVID-19 Case characteristics for Chicago residents

CHARACTERISTIC	NUMBER	% TOTAL CASES <sup>2</sup>	RATE PER 100,000
<b>Chicago</b>	<b>54,050</b>	<b>100%</b>	<b>1,997.4</b>
<b>Age</b>			
0-17	2,665	4.9%	485.4
18-29	10,226	18.9%	1,849.4
30-39	9,635	17.8%	2,111.5
40-49	9,684	17.9%	2,878.2
50-59	9,094	16.8%	2,905.8
60-69	6,448	11.9%	2,451.8
70+	6,286	11.6%	2,671.3
Under investigation	12	0.0%	-
<b>Gender</b>			
Female	26,900	49.8%	1,940.7
Male	26,179	48.4%	1,983.4
Under investigation	971	1.8%	-
<b>Race-ethnicity<sup>3</sup></b>			
Latinx	20,409	47.5%	2,627.8
Black, non-Latinx	12,758	29.7%	1,626.7
White, non-Latinx	6,363	14.8%	707.0
Asian, non-Latinx	1,161	2.7%	645.6
Other, non-Latinx	2,243	5.2%	1,877.5
Under investigation	11,116	20.6%	-

As of July 8, 2020, there have been **426,520** tests performed. The **7-day** average is **5,654** tests per day, with a percent positivity of **4.8%**.

## COVID-19 Morbidity and mortality by geography

GEOGRAPHY	CASES <sup>2</sup>	DEATHS
<b>Chicago</b>	<b>54,050</b>	<b>2,653</b>
Suburban Cook County ( <a href="#">IDPH</a> )	39,452	2,014
Illinois ( <a href="#">IDPH</a> )	149,432	7,099
U.S. ( <a href="#">CDC</a> )	2,982,900	131,065
World ( <a href="#">WHO</a> )	11,669,259	539,906

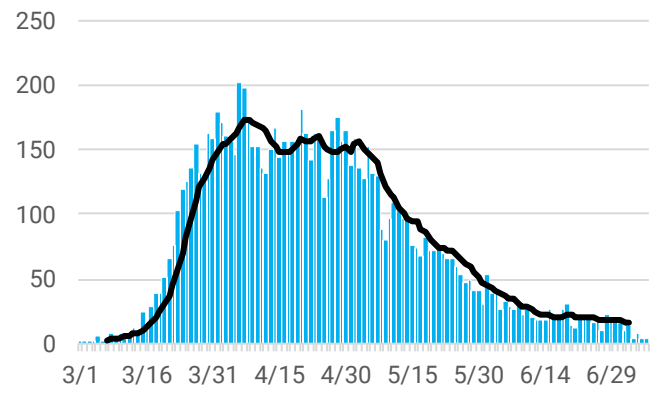
<sup>1</sup> Recovered is an estimate based on 14 days post diagnosis for people not hospitalized or 30 days post hospitalization for people hospitalized among those who have not died.  
<sup>2</sup> Does not include persons with pending COVID-19 tests or persons with COVID-19 related illness who have not been tested.  
<sup>3</sup> Race-ethnicity percentage is calculated among those with known race-ethnicity as reported by the medical provider.

## COVID-19 Death characteristics for Chicago residents

CHARACTERISTIC	DEATHS	% TOTAL DEATHS	% DEATHS WITHIN GROUP	RATE PER 100,000 POP
<b>Chicago</b>	<b>2,653</b>	<b>100%</b>	<b>4.9%</b>	<b>98.0</b>
<b>Age</b>				
0-17	2	0.1%	0.1%	0.4
18-29	18	0.7%	0.2%	3.3
30-39	65	2.5%	0.7%	14.2
40-49	143	5.4%	1.5%	42.5
50-59	291	11.0%	3.2%	93.0
60-69	578	21.8%	9.0%	219.8
70+	1,556	58.7%	24.8%	661.2
<b>Gender</b>				
Female	1,087	41.0%	4.0%	78.4
Male	1,565	59.0%	6.0%	118.6
Under investigation	1	0%	0.1%	-
<b>Race-ethnicity<sup>3</sup></b>				
Latinx	850	32.2%	4.2%	109.4
Black, non-Latinx	1,146	43.4%	9.0%	146.1
White, non-Latinx	508	19.2%	8.0%	56.4
Asian, non-Latinx	118	4.5%	10.2%	65.6
Other, non-Latinx	21	0.8%	0.9%	17.6
Under investigation	10	0.4%	0.1%	-

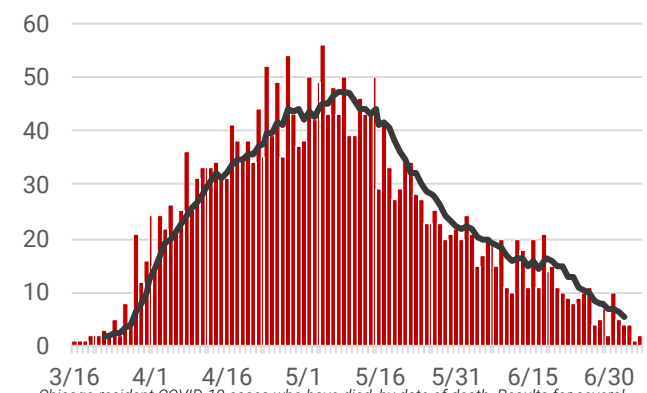
<sup>3</sup>Race-ethnicity percentage is calculated among those with known race-ethnicity as reported by the medical provider.

Daily COVID-19 hospitalizations and 7-day rolling average



Chicago resident COVID-19 cases who have been hospitalized, by date of first hospitalization. Results for several previous days are updated each day.

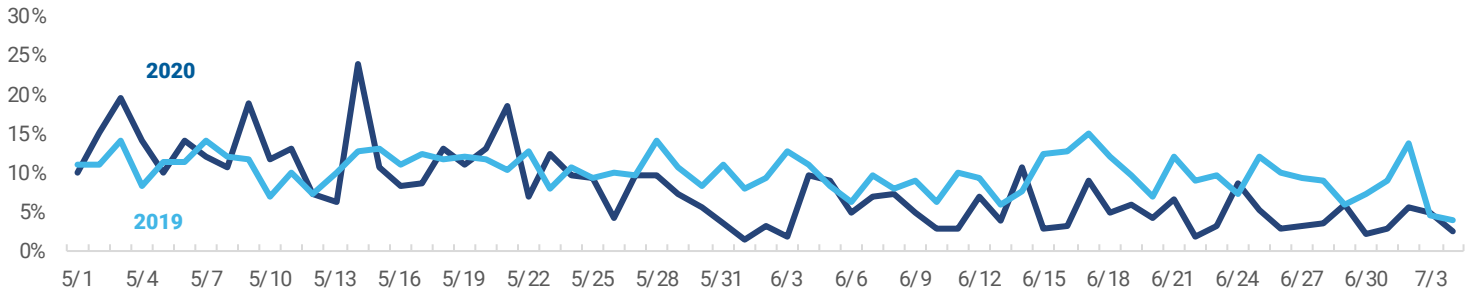
Daily COVID-19 deaths and 7-day rolling average



Chicago resident COVID-19 cases who have died, by date of death. Results for several previous days are updated each day.

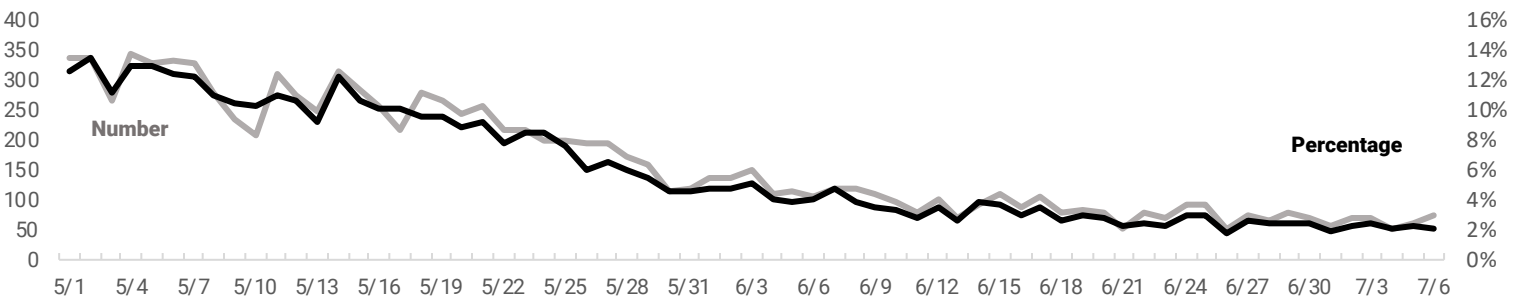
COVID-19 symptoms are similar to those of influenza, so monitoring influenza-like illness (ILI) may also help identify COVID-19. ILI activity in 2020 that is higher than what was experienced in 2019 could indicate the presence of COVID-19 in the community.

### Percentage of daily emergency department (ED) visits due to influenza-like illness (ILI) in Chicago, 2020 vs. 2019



COVID-19-like illness (CLI) is a new tool used to help track trends in COVID-19 activity. An increase in the number and percentage of ER visits due to CLI could indicate an increase in COVID-19 activity in the community.

### Number and percentage of daily emergency department (ED) visits due to COVID-19-like illness (CLI) in Chicago, 2020



Percentage of daily emergency department visits attributed to ILI and CLI for Chicago zip codes based on chief complaint submitted to ESSENCE.