



The Forest Preserve District of Cook
County

Resource Management

Wildlife Management Division

Collaborations with Cook County Wildlife Division

- Illinois Department of Natural Resources
- Cook County Animal Control
- University of Illinois
- Max McGraw Wildlife Foundation
- Brookfield Zoo
- Ohio State University
- Illinois Department of Health
- Center for Disease Control
- Loyola University
- Purdue University
- University of Oklahoma
- University of Tennessee
- Municipal Animal Control Officers Association
- National Wildlife Control Operators Association
- North Park University
- Rush Medical Center
- Lincoln Park Zoo
- Others

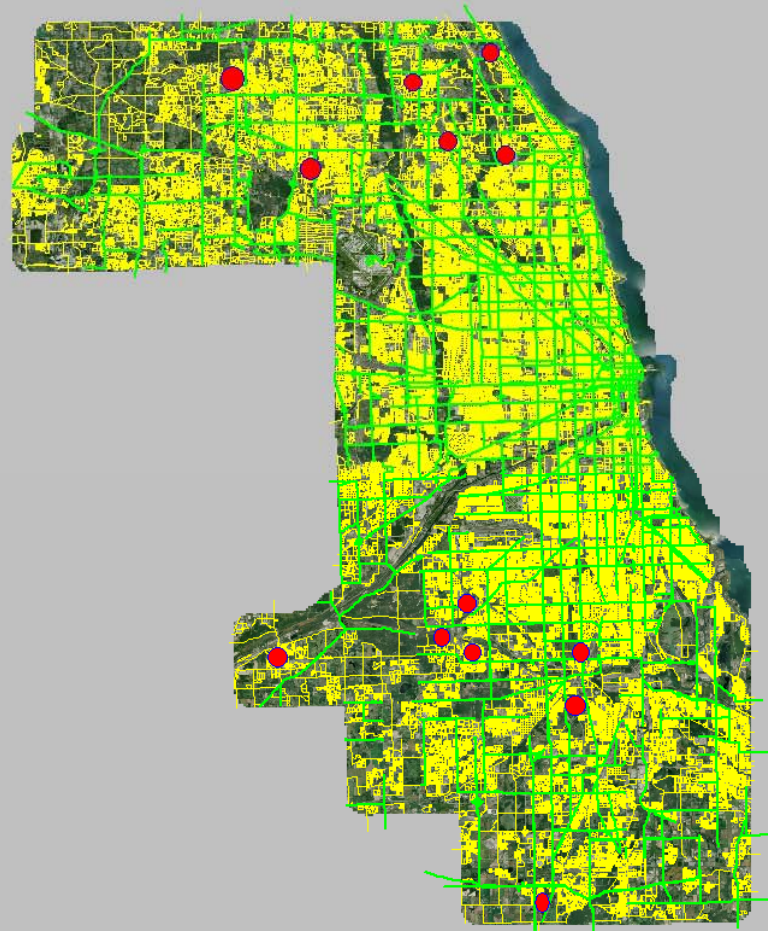
Animals as Biomonitors

Zoonosis

Environmental Health Assessments



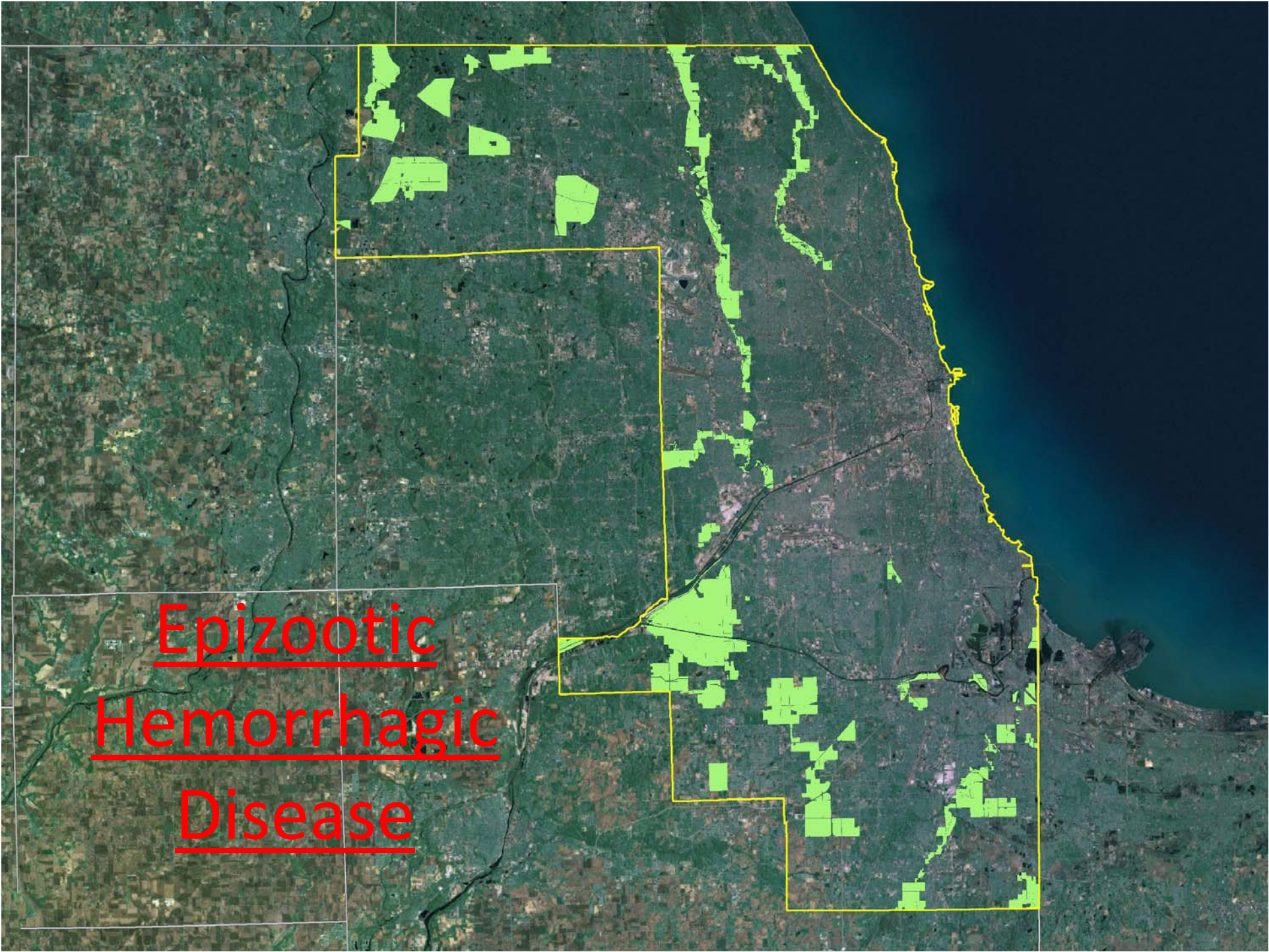
Cooperating Disease Surveillance/Monitoring Agencies









A satellite map of a coastal region, likely in the United States, showing a yellow boundary that follows the coastline and extends inland. Several areas within this boundary are highlighted in bright green, indicating specific regions of interest. The map shows a mix of green vegetation, brownish areas, and a dark blue body of water on the right side. The text 'Epizootic Hemorrhagic Disease' is overlaid in red, underlined font in the lower-left quadrant.

Epizootic
Hemorrhagic
Disease



Concerns from Wildlife Rabies



Case Study

LaCrosse encephalitis virus

Forest Preserve District of Cook County, IL



Capture Techniques

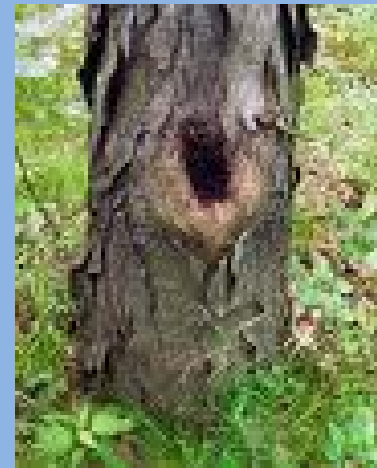


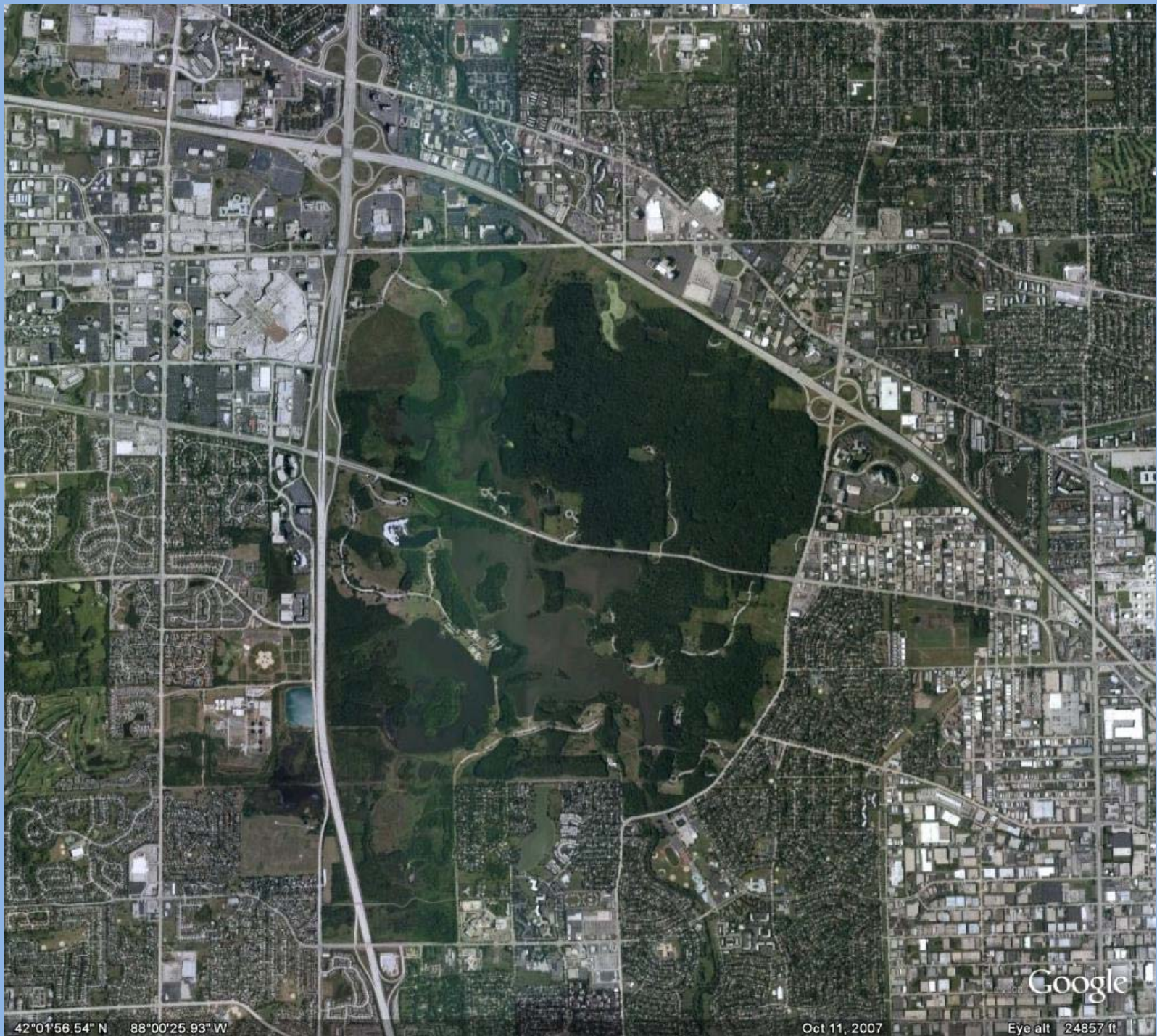
Processing of Live Captured Deer







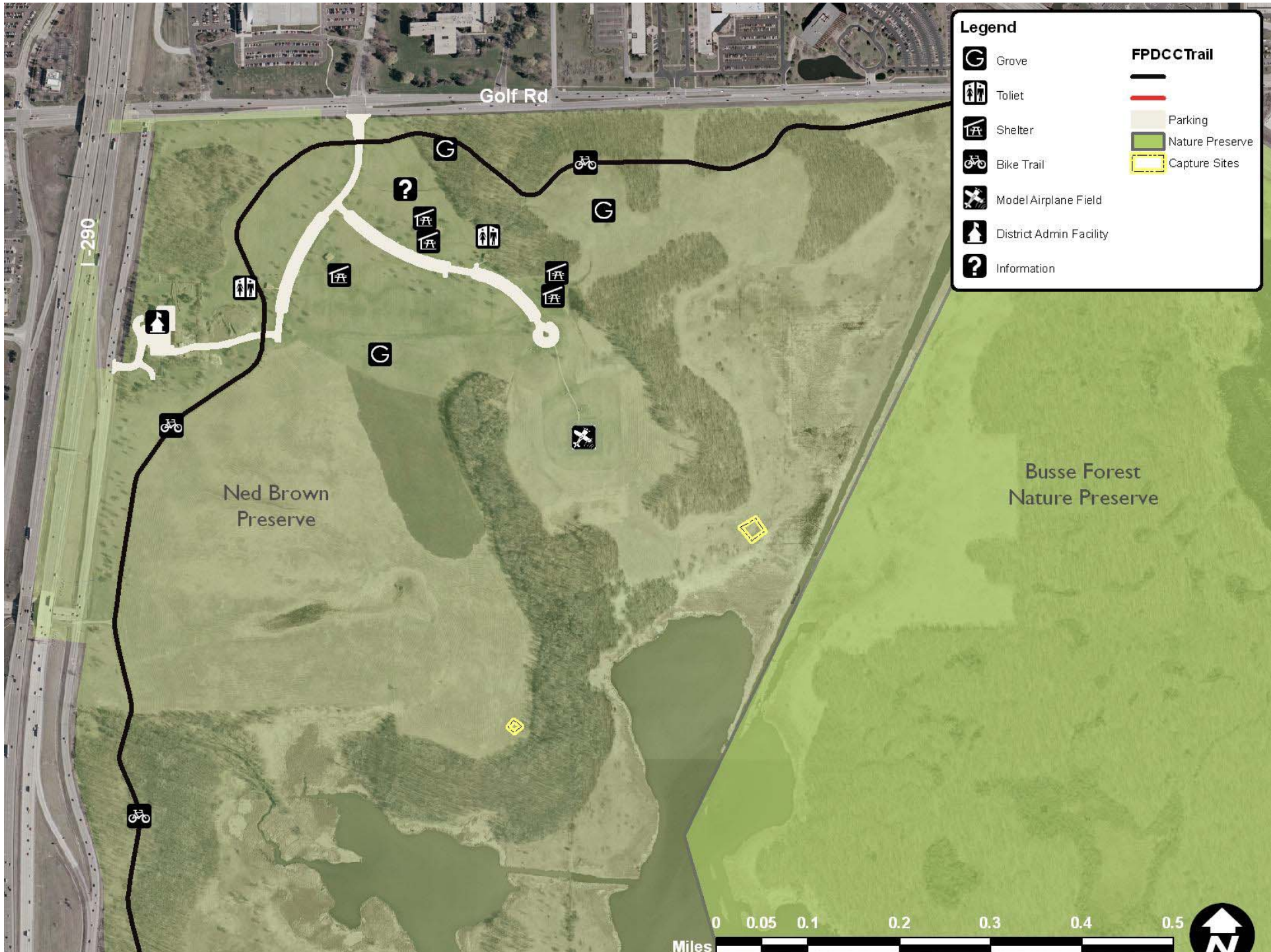




42°01'56.54" N 88°00'25.93" W

Oct 11, 2007

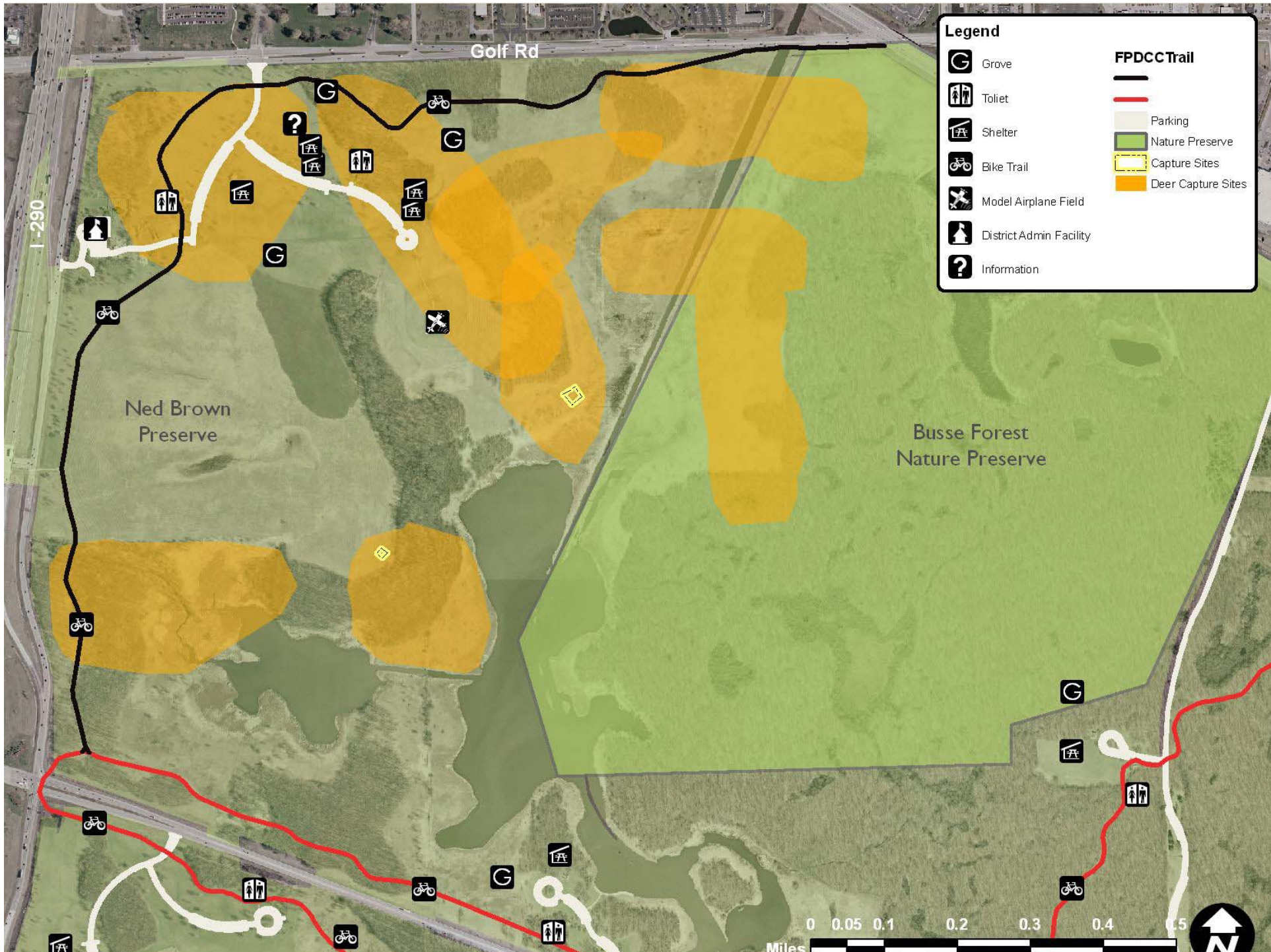
Google
Eye alt 24857 ft



Legend

- | | |
|---|---|
|  Grove | FPDCCTrail |
|  Toilet |  — |
|  Shelter |  — |
|  Bike Trail |  Parking |
|  Model Airplane Field |  Nature Preserve |
|  District Admin Facility |  Capture Sites |
|  Information | |

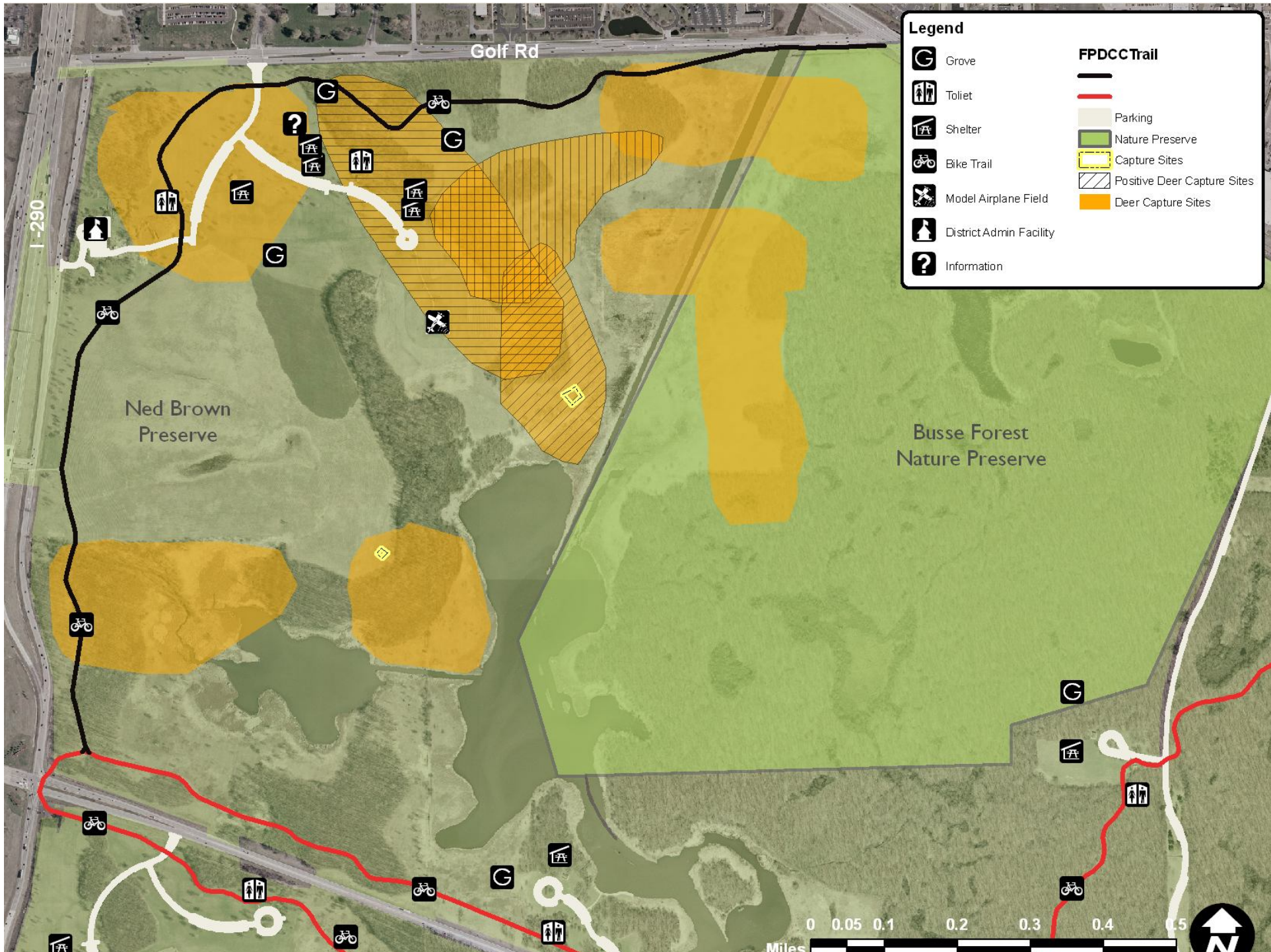


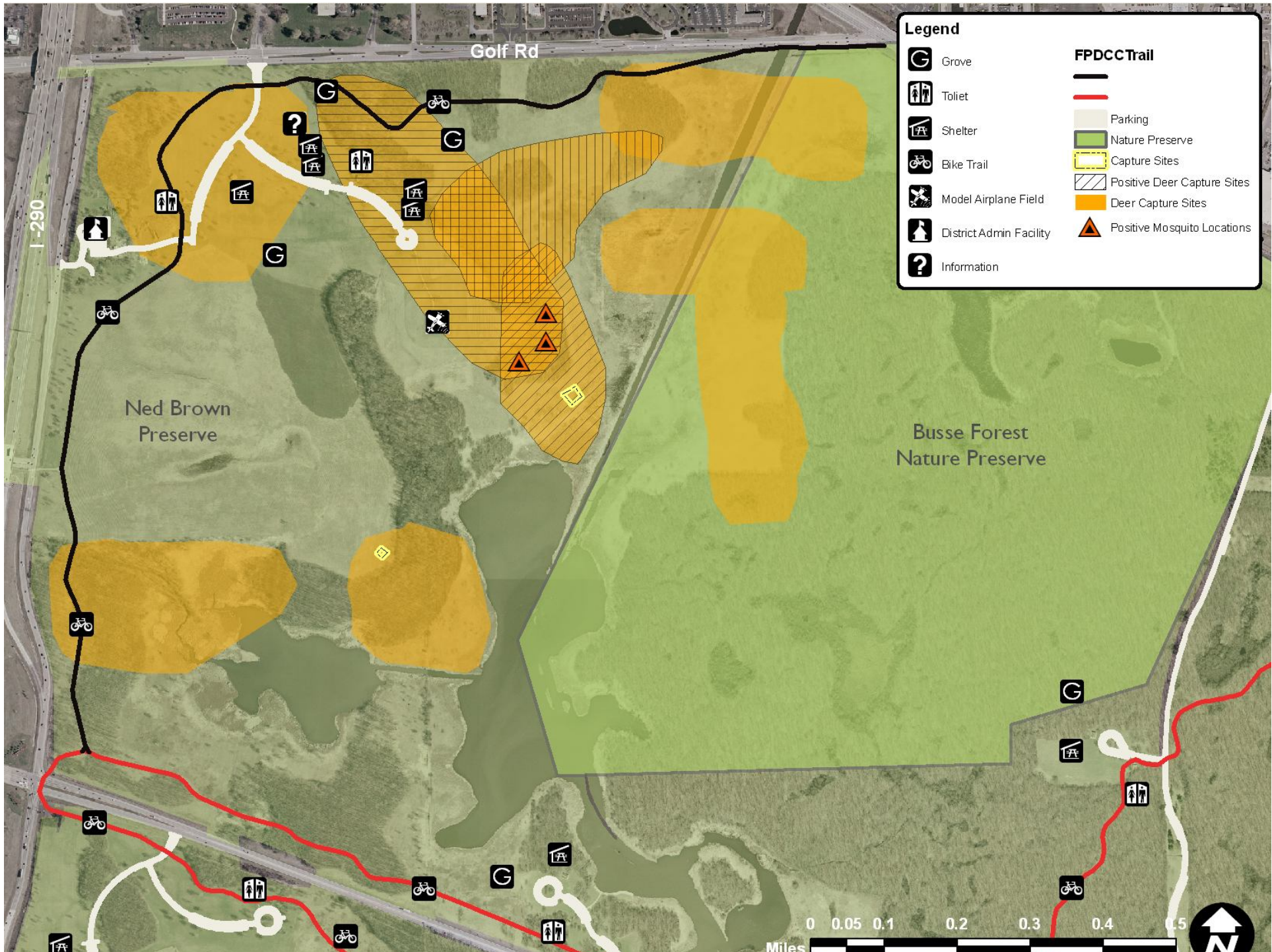


Legend

	Grove	FPDCC Trail
	Toilet	
	Shelter	
	Bike Trail	
	Model Airplane Field	
	District Admin Facility	
	Information	







Legend

- | | | |
|--|-------------------------|-------------------|
| | Grove | FPDCCTrail |
| | Toilet | |
| | Shelter | |
| | Bike Trail | |
| | Model Airplane Field | |
| | District Admin Facility | |
| | Information | |
| | | |

I-290

Golf Rd

Ned Brown Preserve

Busse Forest Nature Preserve

0 0.05 0.1 0.2 0.3 0.4 0.5
Miles



Blood Collection



COUGARS, WOLVES AND BEARS IN THE URBAN ENVIRONMENT?

