

Pet Evacuation and Sheltering in a Catastrophic Event

**Indiana State
Board of Animal Health**

Animal Services Conference
December 2015



Indiana State Board of Animal Health



PETS Act 2006

- Signed 10/06/06 by President Bush
- Mandates companion and service animals be included in local and state planning for disasters
 - Allows reimbursement to states and localities for expenses incurred in companion animal care
- Also allows for use of training and preparedness funds for animal resources



Indiana State Board of Animal Health

Disaster Planning

- Incident Command System
- Animal issues
- Local response plan
- National response
- District planning



Indiana State Board of Animal Health

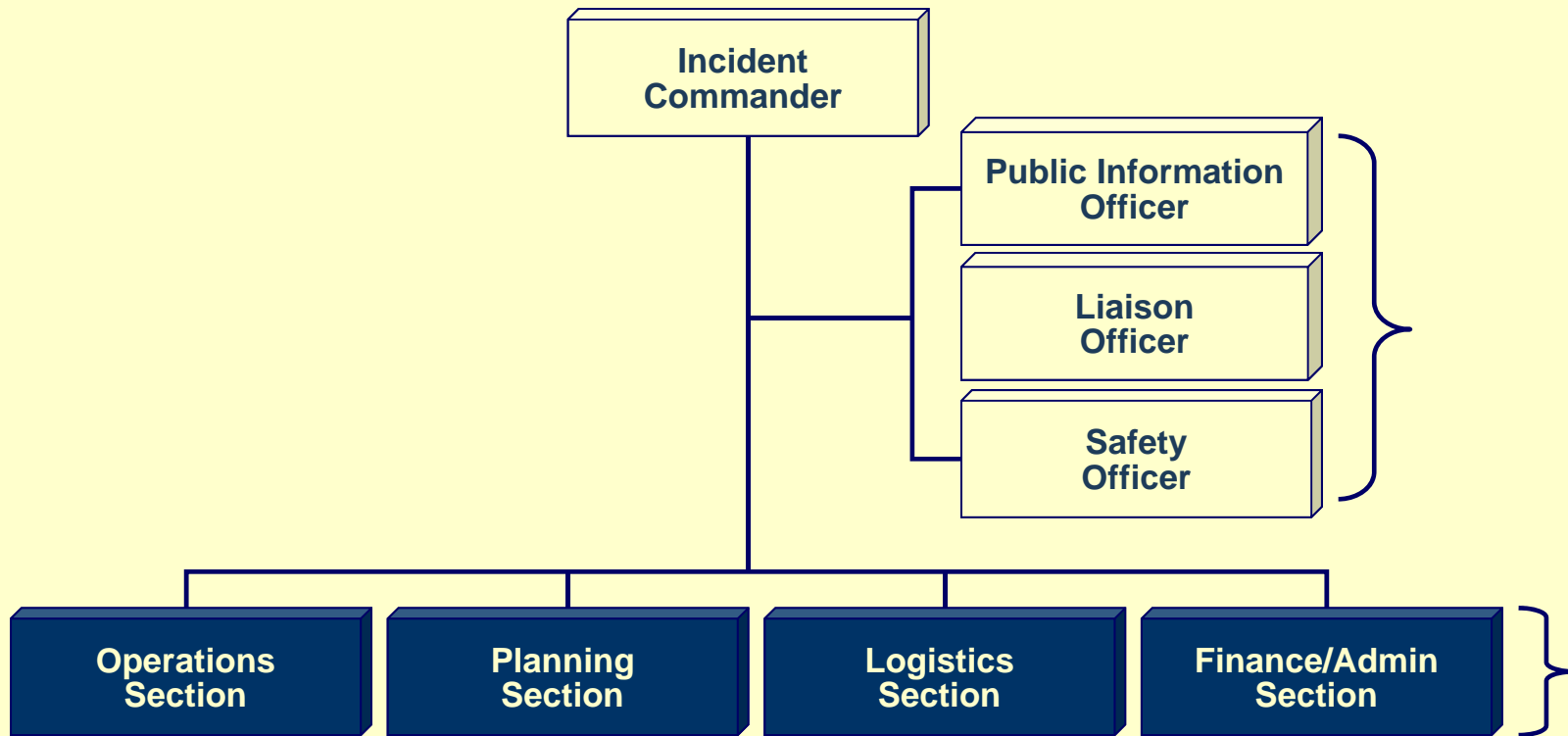
Incident Command System

- All animal-related response operates within the Incident Command System
 - All responders take IS 100, 200, 700 and 800
- All BOAH staff trained to ICS 300
 - some to ICS 400
- Emphasize understanding of the system and working within it during events and exercises



Indiana State Board of Animal Health

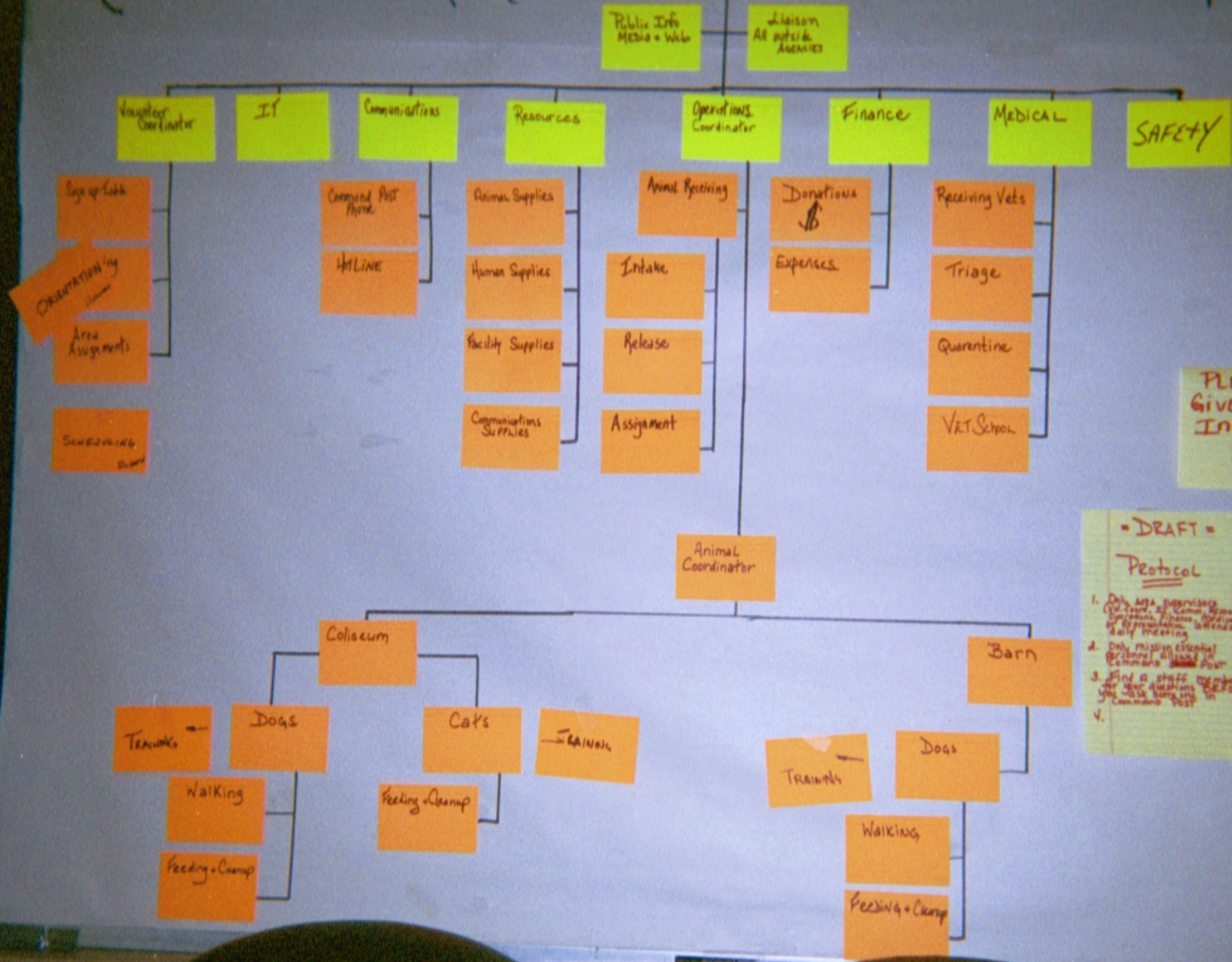
ICS Structure



Indiana State Board of Animal Health

REGIONAL EMERG.

ANIMAL SHELTER



PLEASE GIVE us Your Input
↓

- DRAFT -
Protocol

1. Daily Area Supervisors
Get report of Command Supervisor
Supervisors, Intake, Operations
or Representative attend
Daily Meeting
2. Daily mission critical
Personnel assigned in
Command Post
3. Find a staff member
for each department
who will hang out in
Command Post
- 4.

Animal Issues

- Rescue of displaced animals
- Transport to shelter/Triage
- Shelter and care of animals with/without animals
 - Owned animals
 - Shelter animals
 - Stray animals
- Reunification with owners
- Fostering/placement of remaining population



Indiana State Board of Animal Health

Rescue and Transport

- Identify areas with trapped animals
- Collect info from owners on locations
- Work with local EMA to obtain access
- Use only trained personnel
 - Train personnel in specific skills
- Have proper equipment and transport cages



Indiana State Board of Animal Health



hnd

Triage

- Animals must be evaluated for injury
 - Either prior to transport or at arrival
- Veterinarians and veterinary technicians need to be available
 - Use local practitioners, response teams
- Develop medical care teams from volunteers



Indiana State Board of Animal Health



Shelter and Care of Animals

- Provide temporary shelter location for animals retrieved
- Movement of shelter animals to allow room for addition of rescues
- Teams of personnel to provide care
- Use of volunteers?
- Donations
- Identification



Indiana State Board of Animal Health

Animal Sheltering

- Without owners
- Co-located shelter
- Large-scale established shelter (time limit)
- Stray animals
 - Reunification
 - Adoption



Indiana State Board of Animal Health





Reunification

- Collect info on lost pets from victims
- Take pictures of all animals
 - alive and dead
- Connect owners with temporary housed animals
- Identify relinquished pets
- Establish limits on length of housing



Indiana State Board of Animal Health



Fostering and Placement

- Need to re-home animals
 - Stray, relinquished, and unidentified
- Use foster homes
 - To keep cages open in shelter
 - To identify behavior issues
- Work to identify permanent long-term owners (screen)



Indiana State Board of Animal Health

County/local planning

- Identify
 - Site to shelter animals away from owners
 - County fairgrounds (?)
 - Existing shelter/warehouse
 - Site for co-location of shelters
 - Identified by Red Cross
 - Back-up site for each



Indiana State Board of Animal Health

Existing housing (people)

- Hotels/motels
 - Allow animals (size)
 - Allow animals in emergency only
- Apartments
- Rental housing
- Temporary housing



Indiana State Board of Animal Health

Co Located Shelter

- Ideal: Where owners can be sheltered near their animals
- Advantages
 - Gives people something to do
 - Makes owners and animals happy
 - Mental health support for all
 - Decreases staff requirements
 - One-third of staff required for a stand-alone shelter
 - Security required



Indiana State Board of Animal Health



Indiana's Animal Disaster Response Unit



Indiana State Board of Animal Health

PETS Trailer

- **Fully stocked mobile response unit**
- **Accommodates up to 75 companion animals**
- **Equipment includes:**
 - Cages/crates
 - Collars
 - Leashes
 - Basic medical supplies
 - ID/microchip readers



Indiana State Board of Animal Health

National Planning

- National Animal Rescue and Sheltering Coalition (NARSC)
 - National non-profits involved in disaster response for animals
 - Identify organization(s) that will respond
 - Work within the state, local system
- USDA-Animal Care
- can provide resources from federal level



Indiana State Board of Animal Health

District Planning

- Identify all animal controls, non government organizations related to animals, and rescue groups in each county
- Identify boarding and kennel facilities
- Identify livestock facilities (horses)
- Develop a contact list
 - Skilled personnel
 - Non skilled personnel
 - Volunteers (emergent)



Indiana State Board of Animal Health

Questions(?)

- Indiana State Board of Animal Health
- <http://www.in.gov/boah/2674.htm>
- 317-544-24389
- snorman@boah.in.gov



Indiana State Board of Animal Health