

RIVER ECOLOGY & GOVERNANCE TASK FORCE

**THIRD TASK FORCE MEETING
JUNE 26, 2019**

- 1. Introductions**
- 2. Opening remarks**
 - a. Steve Koch, chair
 - b. Rachel Elman, Director of Operations, Mayor's Office
 - c. Eleanor Gorski, DPD Acting Commissioner
- 3. Col. Reisinger, US Army Corps of Engineers**
- 4. Working group reports**
 - a. Community Connections
 - b. Stewardship & Volunteers
 - c. River Trails
 - d. Science & Design
- 5. Other business**
- 6. Presentation: Friends of the Chicago River, mapping application**
- 7. Adjourn**

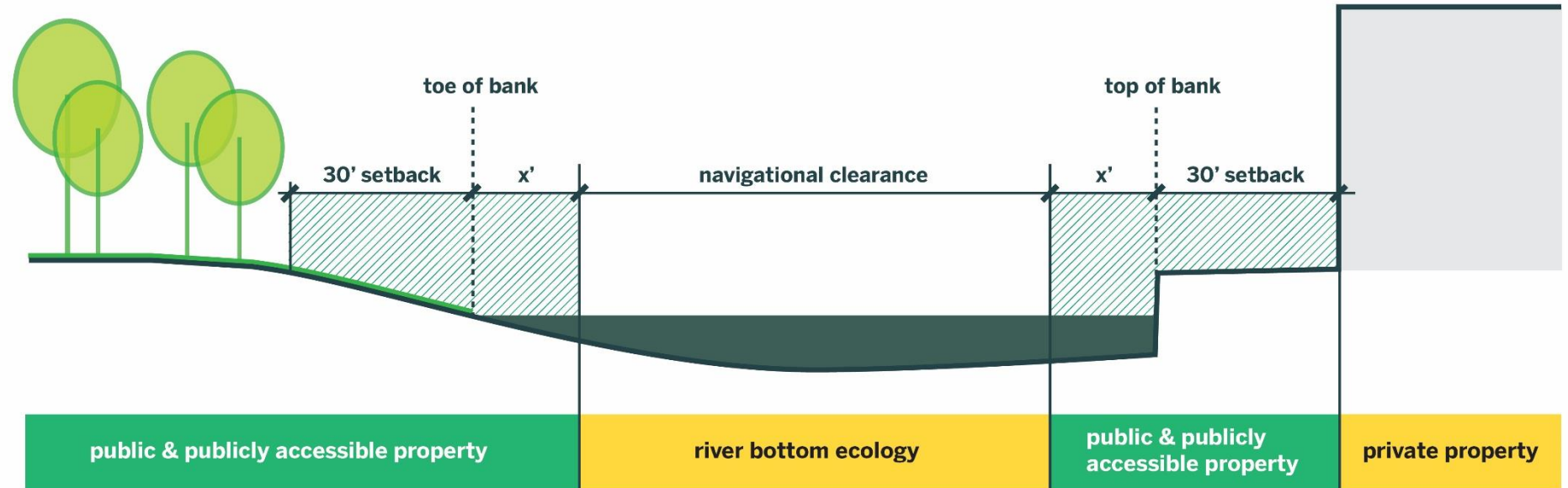
Transforming Chicago's unique waterway system into a **thriving and ecologically integrated natural asset**, capable of accommodating the needs of people, requires **coordinated planning**, investment and management

Aspire to, and realize no later than 2040, inland waterways in Chicago that are **inviting, productive and living**, that **support wildlife in-stream and on their banks**, and that **contribute to our city's resiliency**. Start by:

1. Initiating a coordinating structure
2. Identifying new opportunities to invest and involve communities in the river
3. Developing a long-term structure for stewardship and maintenance and identify fundraising opportunities

River Prism & 30-Foot Setback

- Area of Focus
- Area for Coordination



**RIVER ECOLOGY
& GOVERNANCE
TASK FORCE**

**CHICAGO RIVERS
RESTORATION
FRAMEWORK PLAN**

JUNE 26, 2019

SCOPE OF WORK

Chicago Rivers Restoration Framework Plan

Section 22, Planning Assistance to States Program

DRAFT

Prepared By:



**U.S. Army Corps of Engineers
Chicago District**

Community Connections Working Group

Mission & Role

The *mission* of the Community Connections Working Group is to:

- Define active communities along the river,
- Identify opportunities for future engagement, and
- Seek ways to connect communities along the river to the work of the River Governance & Ecology Task Force.

With respect to other working groups, the *role* of the Community Connections Working Group is to engage communities in planning, vetting, and eventually implementing the projects and policies of other River Governance & Ecology Task Force Working Groups.

Community Connections Working Group

Project Spotlight Approach: Piloted by South Branch Park Advisory Council



- Intro to South Branch Park Framework Plan

- How do you define the “community” relevant for your initiative?

- What is your leadership model? Include leaders internal and external to your group.

- What have been your most successful community engagement strategies or tactics?

- Did you miss audiences you would’ve liked to engage? What would you do differently in the future?



Community Connections Working Group

Commissioner Morita Update on MWRD Initiatives

1. Audit of un-leasable land along rivers
2. Audit of public land suitable for urban agriculture



**Metropolitan Water
Reclamation District
of Greater Chicago**

The mission of the Stewardship & Volunteers working group is:

1. Increase the number and diversity of people engaged as volunteers and stewards to improve the health of the river and adjacent lands and communities
2. Develop a diverse range of opportunities for individuals, groups and communities to connect to the river system
3. Use science as the basis to identify priority geographies for ecological stewardship

The mission of the River Trails working group is:

1. Articulate and enhance the river trail networks that exist and the short- and long-term gaps for use by the public
2. Create trail environments for both pedestrians and non-pedestrians without detracting from either experience and which enhance the ecosystem and the communities
3. Identify and provide options for long-term gaps (in water paths; alternative routes through wetlands, parks and preserves; street routes; etc.)

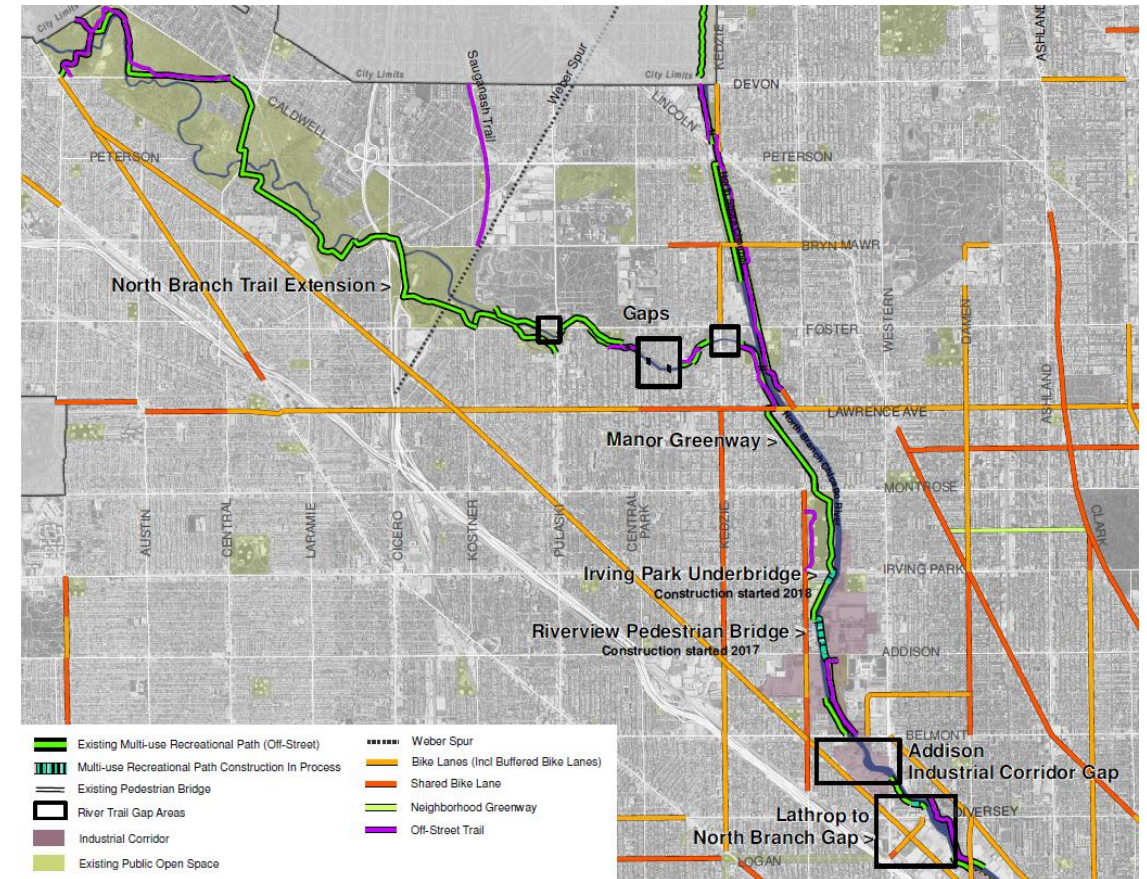
North Branch / North Shore Channel

- **2019 IDOT Statewide Planning Grant Chicago River Edge Access Study**

(Active Transportation Alliance) up to date inventory, overview, and categorization of current bridge and river edge conditions to support trail access to and along the Chicago River.

- **Belmont Ave to Lathrop Homes**

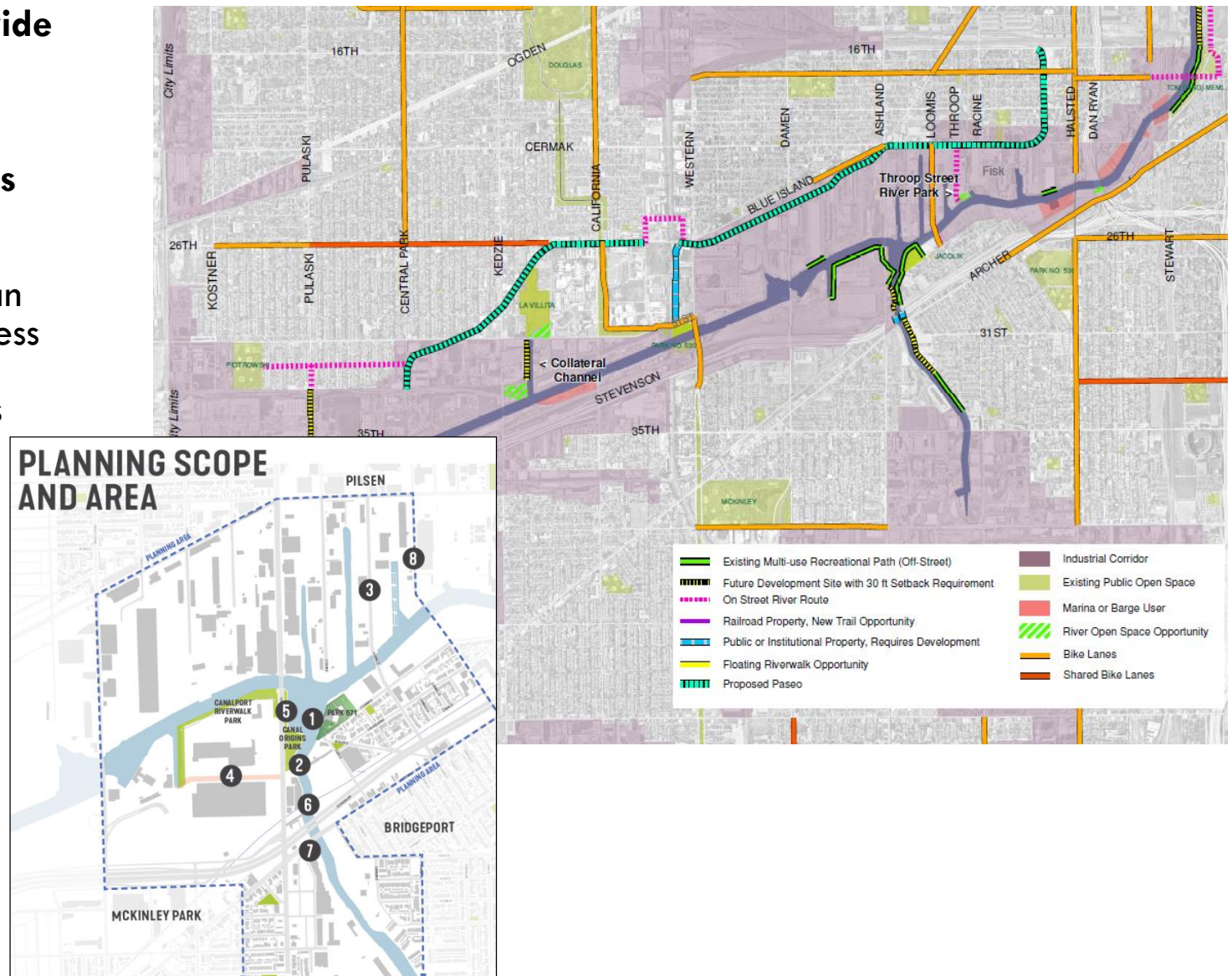
(Active Transportation Alliance) walk audit and assessment of trail connection



South Branch / Sanitary & Ship Canal

- 2019 IDOT Statewide Planning Grant Access Improvements to South Branch Parks

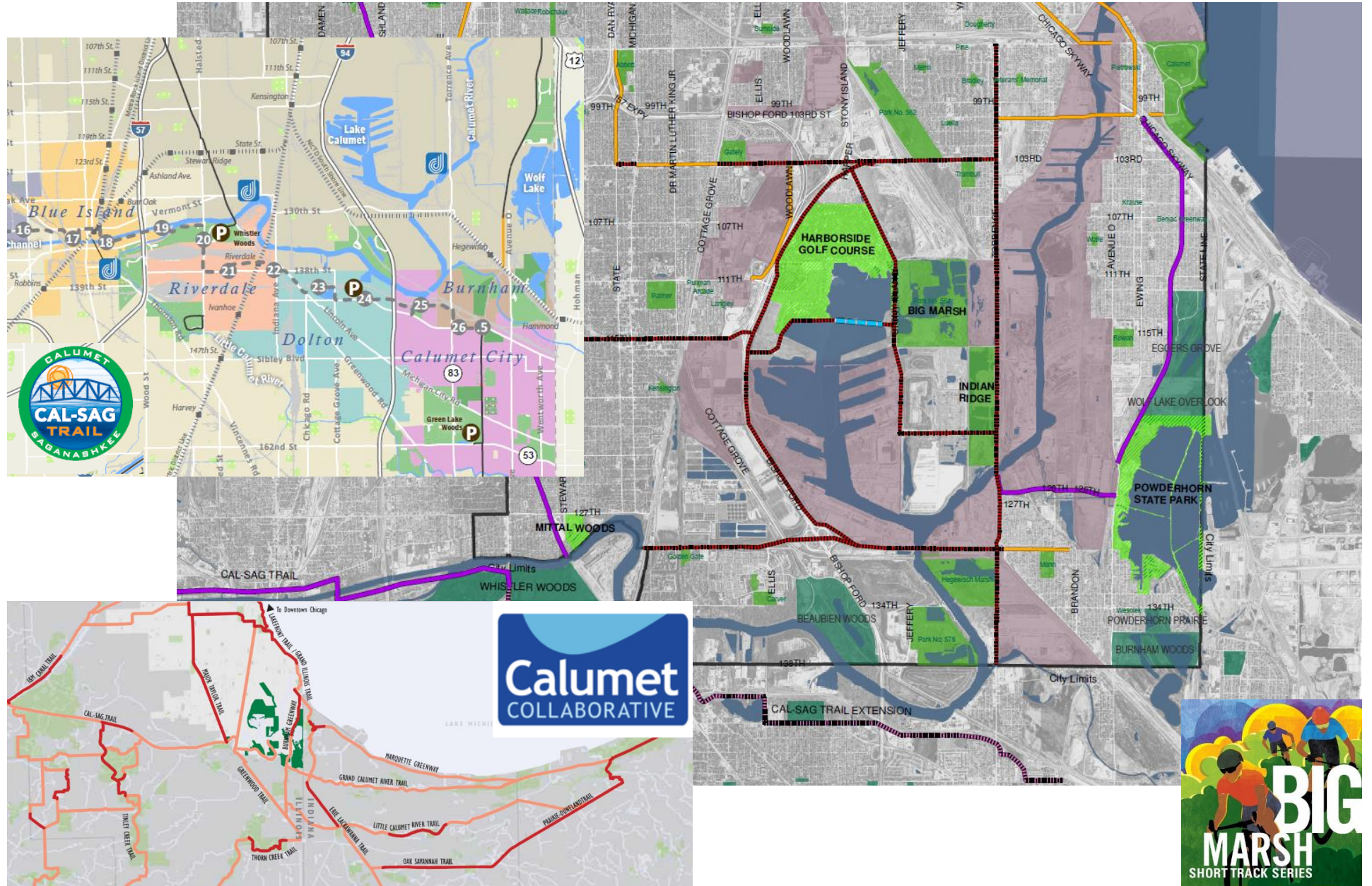
(South Branch PAC) implementation plan for a range of access improvements that connect local parks and its adjacent neighborhoods.



RIVER ECOLOGY & GOVERNANCE TASK FORCE

RIVER TRAILS

Calumet River



The mission of the Science & Design working group is:

1. Unite and align the professional community to put nature on equal footing with humans within Chicago's river system
2. Formalize review processes to include science and design to create a systems approach for ecosystem and human health
3. Develop design principles based on the science and informed by the community, trail and stewardship goals
4. Create a common language for scientists, designers, volunteers, neighborhood communities and the general public around the issues, vision and goals
5. Establish a repository for scientific research and design techniques to support ecosystem and human health

Public Health Scoping Pathways Exercise

Natural Environments and Public Health

- Conserving and enhancing natural environments can have broad impacts on health and well-being
- Understanding those impacts during the planning stages of a project can guide decision-making to mitigate negative impacts or amplify positive ones
- Other cities around the country have incorporated public health into their waterfront planning (i.e. Minneapolis, MN; Rochester, NY; Seattle, WA)

Public Health Scoping Pathways Exercise

What is a scoping pathway?

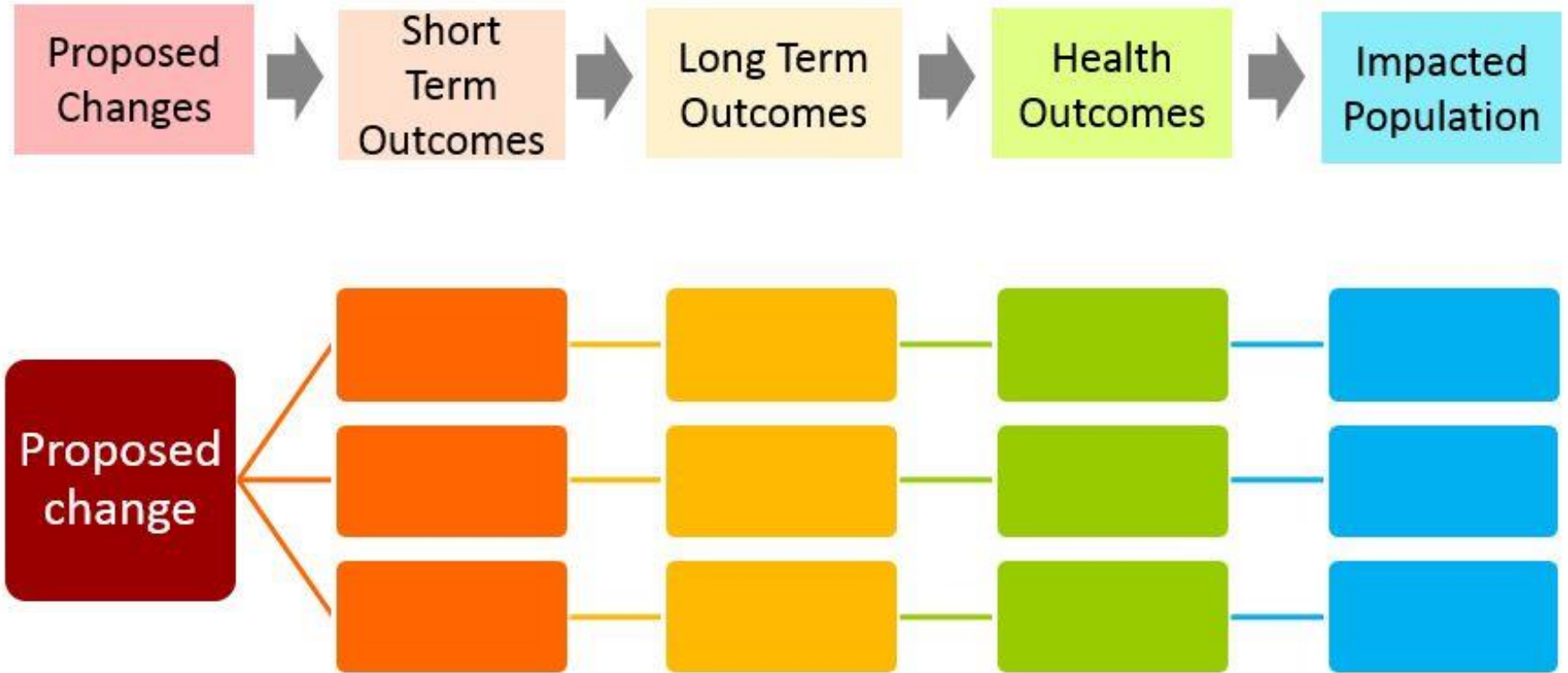
- Scoping pathways are a process for considering the impacts of a decision to answer the following questions:
 - What is the proposed change?
 - What are the short/long term outcomes?
 - Are the outcomes direct or indirect?
 - What are the health outcomes?
 - Who is impacted?

Remember:

- Impacts can be positive or negative
- We don't need to have all of the answers about direction or magnitude of change

Public Health Scoping Pathways Exercise

Scoping Pathway Framework



Public Health Scoping Pathways Exercise

Scoping Pathway Examples

➤ Pathways can be direct:



➤ Or indirect:



➤ and can be fairly complicated...

Public Health Scoping Pathways Exercise

Science & Design Working Group Activity

- Large Group: What are some proposed changes for the riverfront as part of this project? (5 mins)
- Small group: Each group will be assigned a proposed change and will create pathway diagrams using flip chart paper and post-its (10 mins)
 - Short term outcomes
 - Long term outcomes
 - Health Impacts
 - Most impacted populations
- Report back (10 mins)

Amtrak Proposed Seawall Reconstruction

Overview & Context

- IDNR Public Notice
 - Amtrak proposed seawall reconstruction
 - 7ft uniform height steel wall
- Required approvals:
- Army Corps Regional permit
 - IDNR Water Resources permit
 - CDOT Harbor permit



Amtrak Proposed Seawall Reconstruction

Overview & Context



New Amtrak
seawall

Related 78
development site



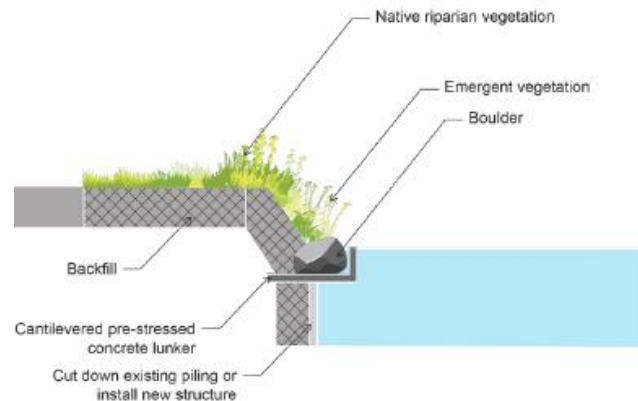
Amtrak Proposed Seawall Reconstruction Chicago River Design Guidelines Recommendations

Consider implementing techniques outlined in the Chicago River Design Guidelines that emphasize improving the ecology and health of the river

Recommendations:

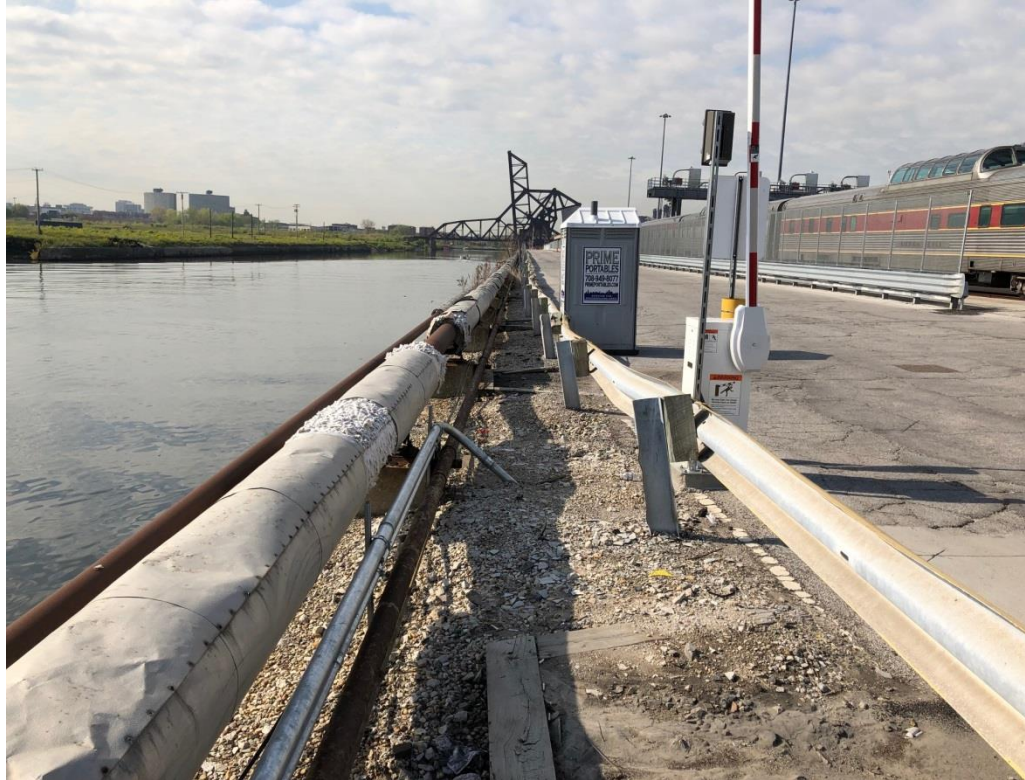
#1: Allow for wetland or habitat shelves to be attached to the seawall

#2: Incorporate green infrastructure within the 9ft setback to improve storm water management and provide a landscaped buffer



Amtrak Proposed Seawall Reconstruction

Amtrak Response

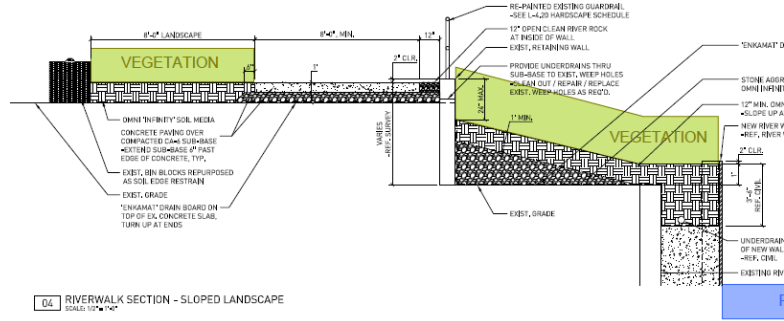


Approx. 6ft - 9ft space between new seawall and edge of road pavement to incorporate landscaping

- 24" soil depth – can support taller prairie plants and trees
- Less watering – easier maintenance
- Need to consider salt tolerance because next to roadway

Amtrak Proposed Seawall Reconstruction

Precedent: Morton Salt



Wall - Vegetated Edge

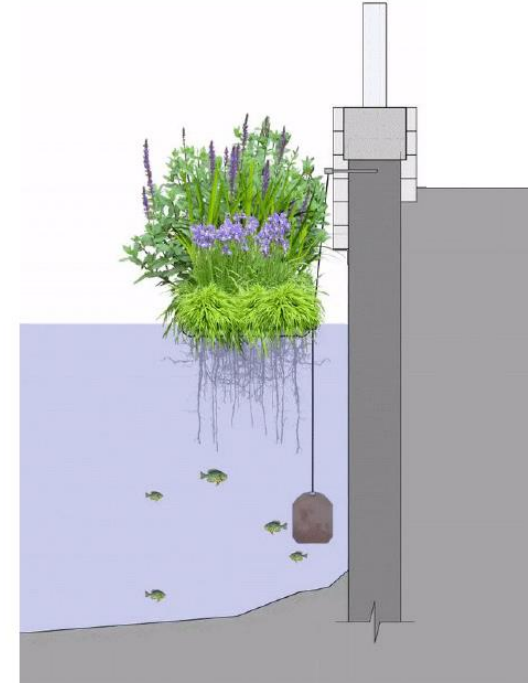
MORTON SALT PRECEDENT

OMNI WORKSHOP



Amtrak Proposed Seawall Reconstruction

Examples of Possible River Edge Restoration Ideas



URBAN
RIVERS

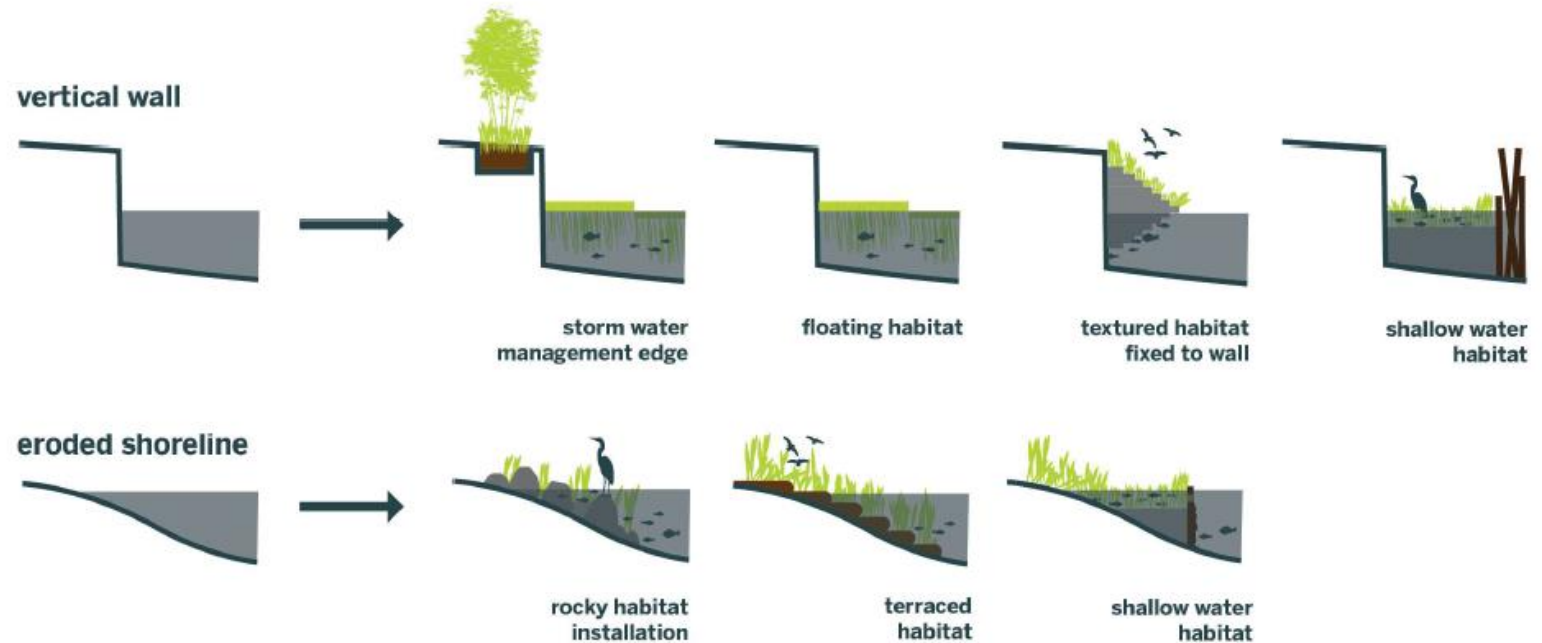


Amtrak Proposed Seawall Reconstruction

Examples of Possible River Edge Restoration Ideas

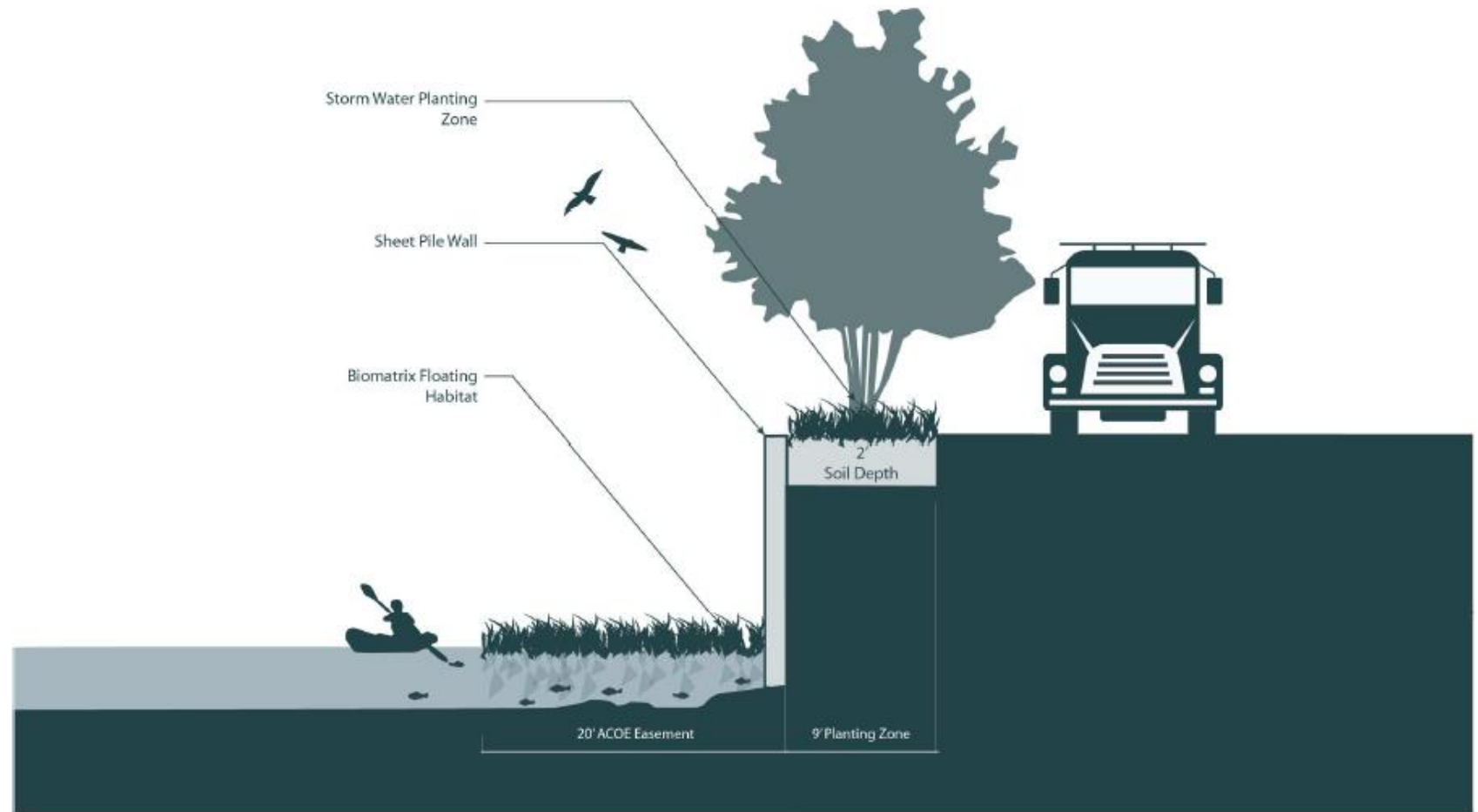
Amtrak Chicago Yards

River Bulkhead Wall - Vegetated Edge



Amtrak Proposed Seawall Reconstruction

Examples of Possible River Edge Restoration Ideas



Amtrak Proposed Seawall Reconstruction

Examples of Possible River Edge Restoration Ideas



Amtrak Chicago Yards, River Bulkhead Wall – Vegetated Edge
June 18, 2019

PROPOSED 9' VEGETATED EDGE
AT TOP OF WALL

Ways to Connect & Stay Informed

- **DPD webpage:**

https://www.chicago.gov/city/en/depts/dcd/supp_info/river-ecology-and-governance-group.html

- **LinkedIn Group:**

<https://www.linkedin.com/groups/12242968/>