

#13 Far Northwest Side

The Far Northwest Side submarket covers a large geographic area that is bifurcated by the Kennedy Expressway. The Six Corners commercial district and The Brickyard Shopping Center are included in this submarket. Potential City retail expenditures are being captured by retail centers located along Harlem in the neighboring communities of Norridge and Harwood Heights and along Touhy in Niles and Skokie.

Demographics

	2000	2010	2012*
Population	331,595	328,847	331,032
Households	116,564	114,336	114,476
Median HH Income*			\$59,973

Median Age	36.2
1 Person Households	29,139 25.5%
All Households with Children	40,982 35.8%
All Households 65+	24,905 21.8%

Square Miles	38.2
Population Density per Square Mile	8,665
SF of Land in Parcels Zoned B, C, D & BPD	49.7M
SF of Ground Floor Area Zoned B, C, D & BPD	21.2M
Total Employment	76,753

Source: US Census Bureau, Esri, Dun & Bradstreet *2012 Estimate

Submarket Inventory

Shopping Centers

6 community centers with more than 125,000 SF:
The Brickyard, Marketplace at Six Corners, Hall Plaza, Bricktown Square, Harlem-Foster, Dunning Square

8 neighborhood centers with 30,000 to 125,000 SF:
Six Corners Plaza, Devon Nagle Plaza, 5119 N. Harlem, Forest View, 5140 N. Harlem, Belmont & Laramie, Belmont Center, Gladstone Corners

Big Box Retailers

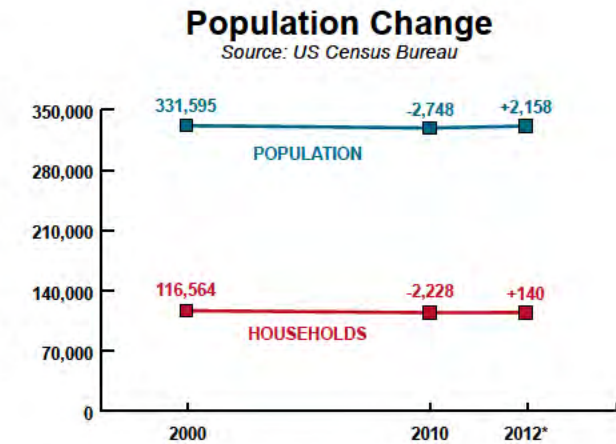
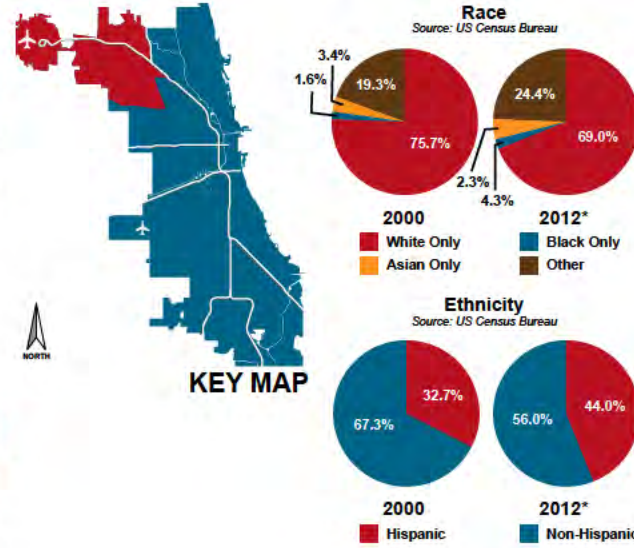
- | | |
|-----------------|----------|
| 1 Crafty Beaver | 1 Sears |
| 2 Home Depot | 1 Target |
| 1 Lowe's | |

Grocery Stores

- | | |
|-----------------------|--------------------------|
| 3 ALDI | 6 Jewel-Osco |
| 2 Cermak Fresh Market | 1 Mariano's Fresh Market |
| 1 Dominick's | 2 Tony's Finer Foods |

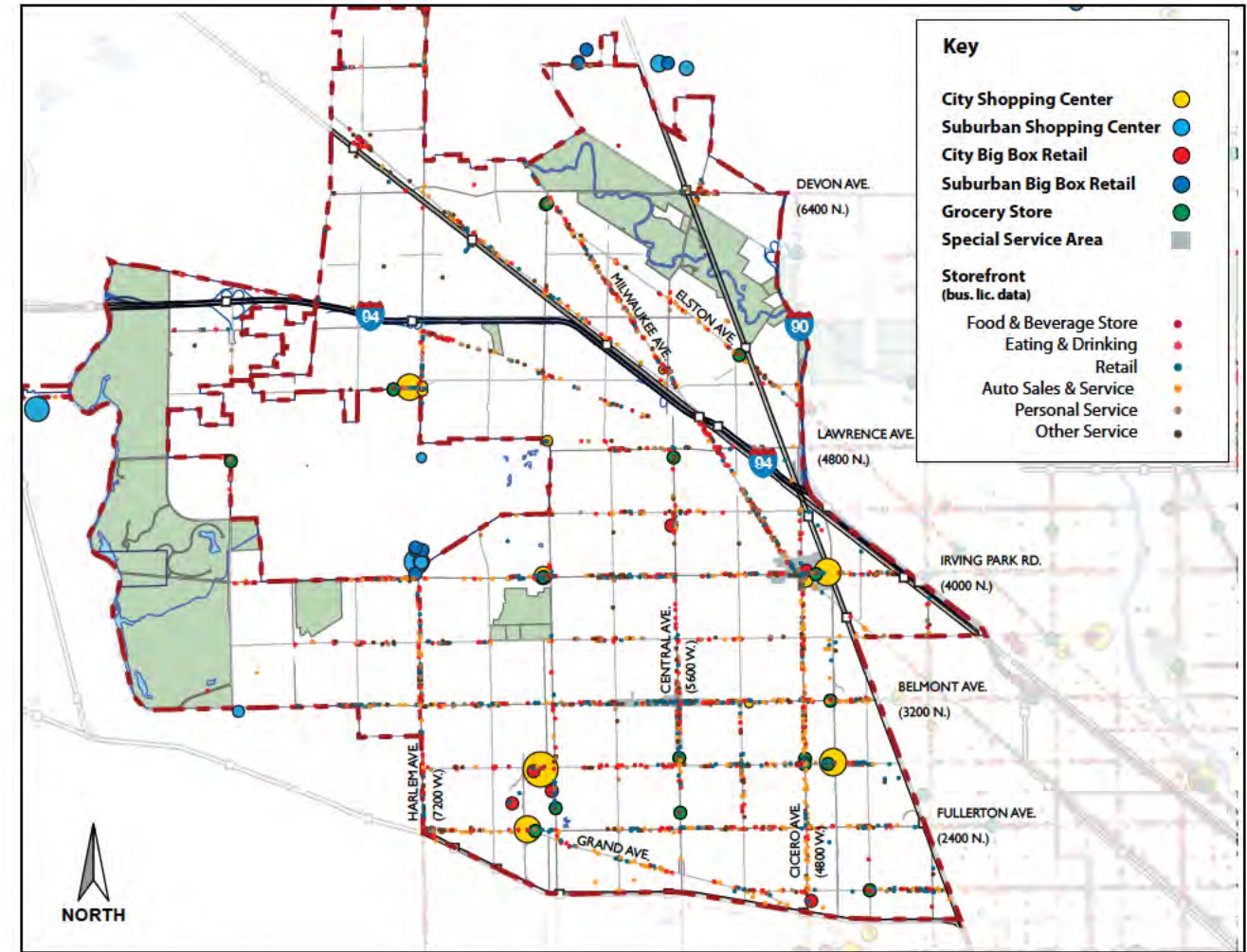
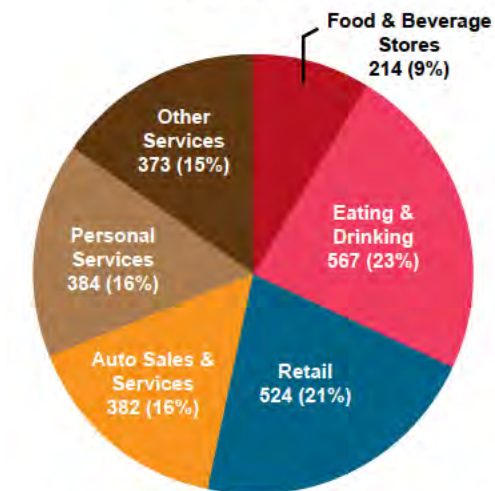
Special Service Areas

- Belmont & Central #2
- Six Corners #28



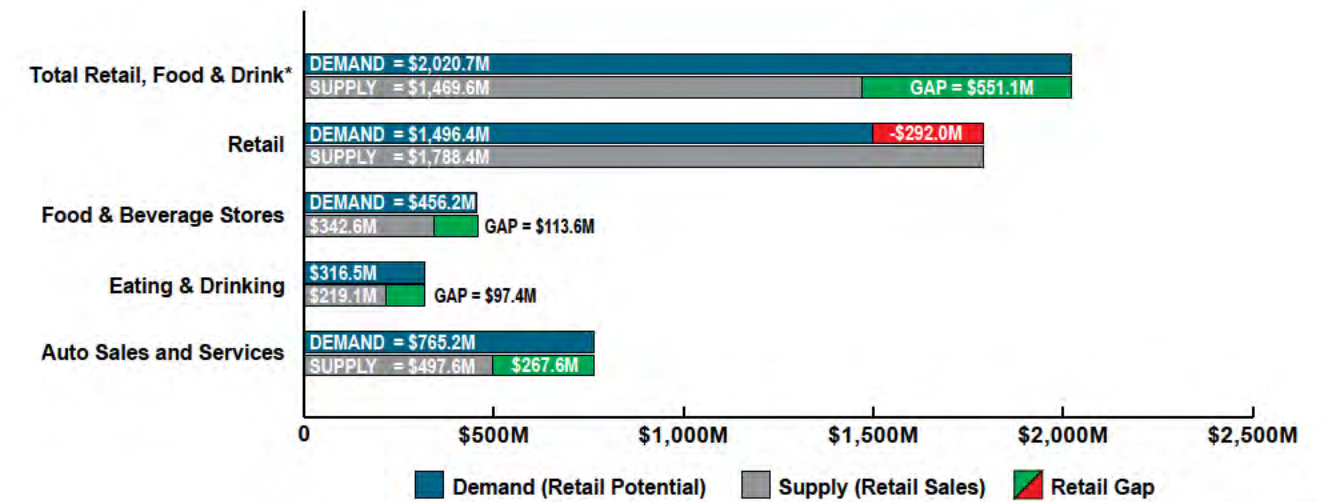
Submarket Business Licenses

Source: City of Chicago



Submarket Inventory Map

Submarket Gap Analysis



*Excludes Non-store Retailers and Auto Sales and Services

Source: Esri Business Analyst