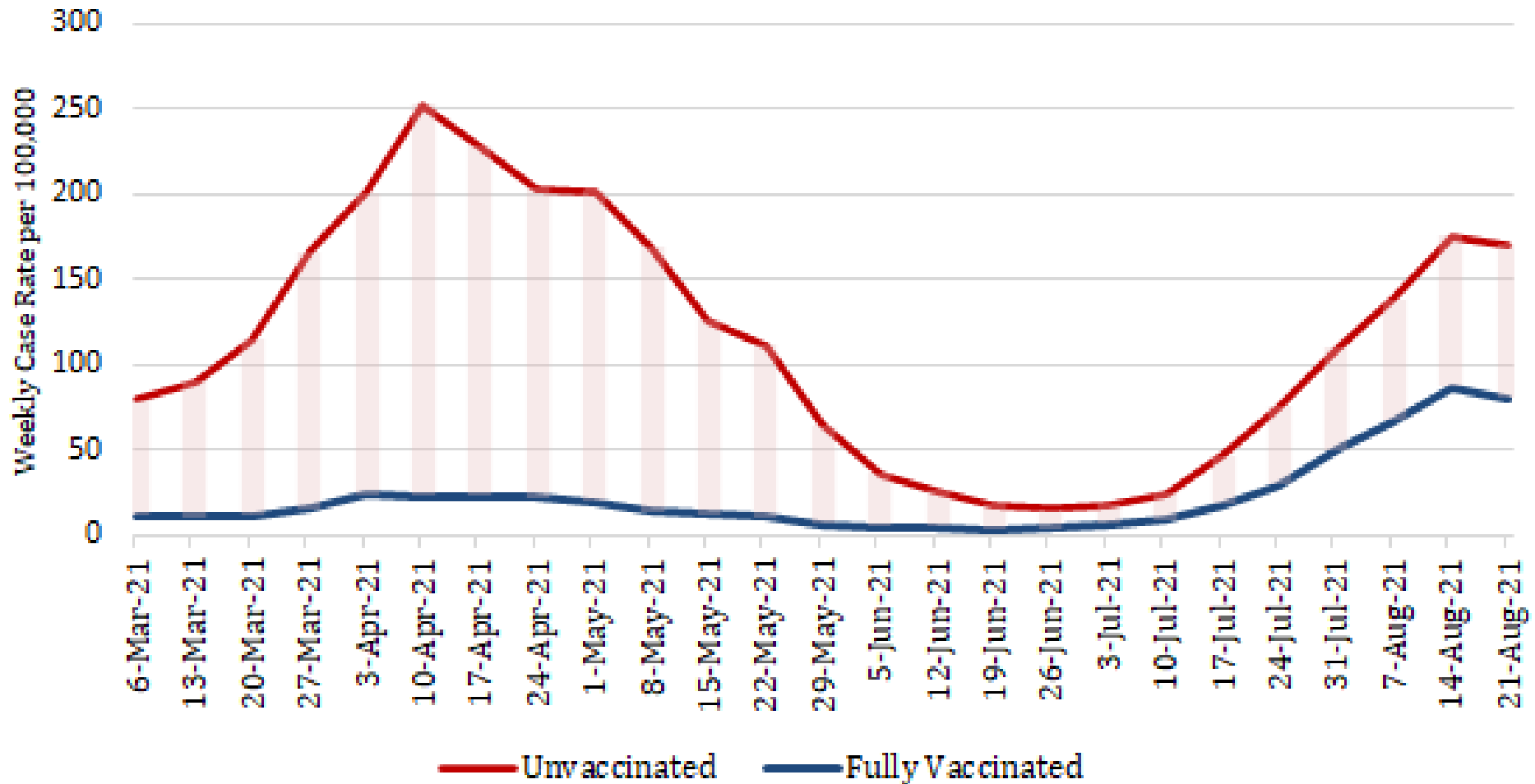


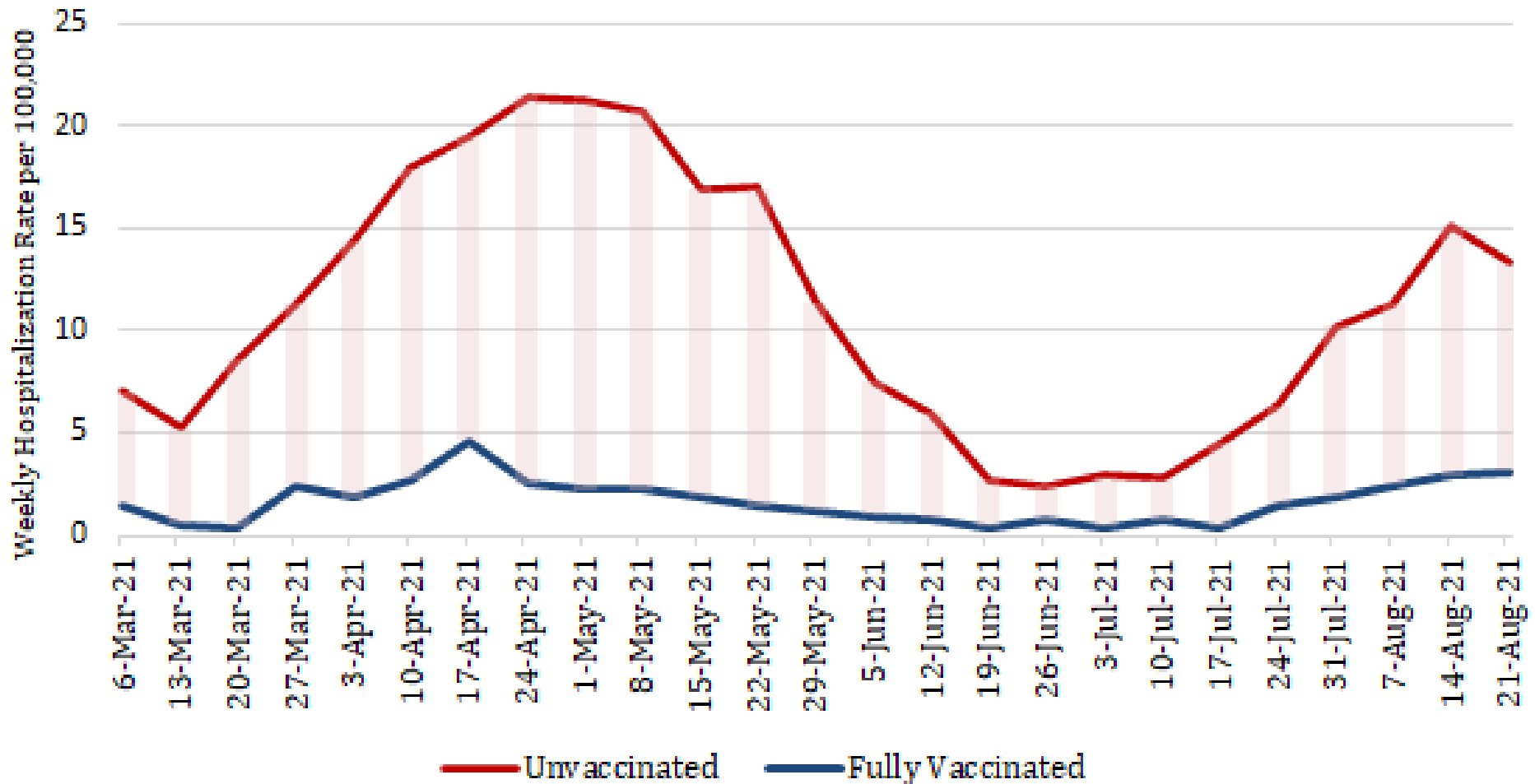
# Weekly Case Rate per 100,000 by Vaccination Status



## Notes:

Includes cases among Chicago residents reported into the Illinois Electronic Disease Surveillance System (I-NEDSS) with date of specimen collection 1/1/2021-8/21/2021, pulled 8/25/2021. Vaccination status obtained from the Illinois Comprehensive Automated Immunization Registry (I-CARE) registry. Vaccinated defined as having had at least one dose prior to a positive test. Fully vaccinated defined as completion of vaccine series at least 14 days prior to a positive test. Rate for vaccinated calculated as total cases divided by cumulative vaccinated at the end of each week, multiplied by 100,000. Rate for unvaccinated calculated as total cases divided by total population minus cumulative vaccinated at the end of each week, multiplied by 100,000.

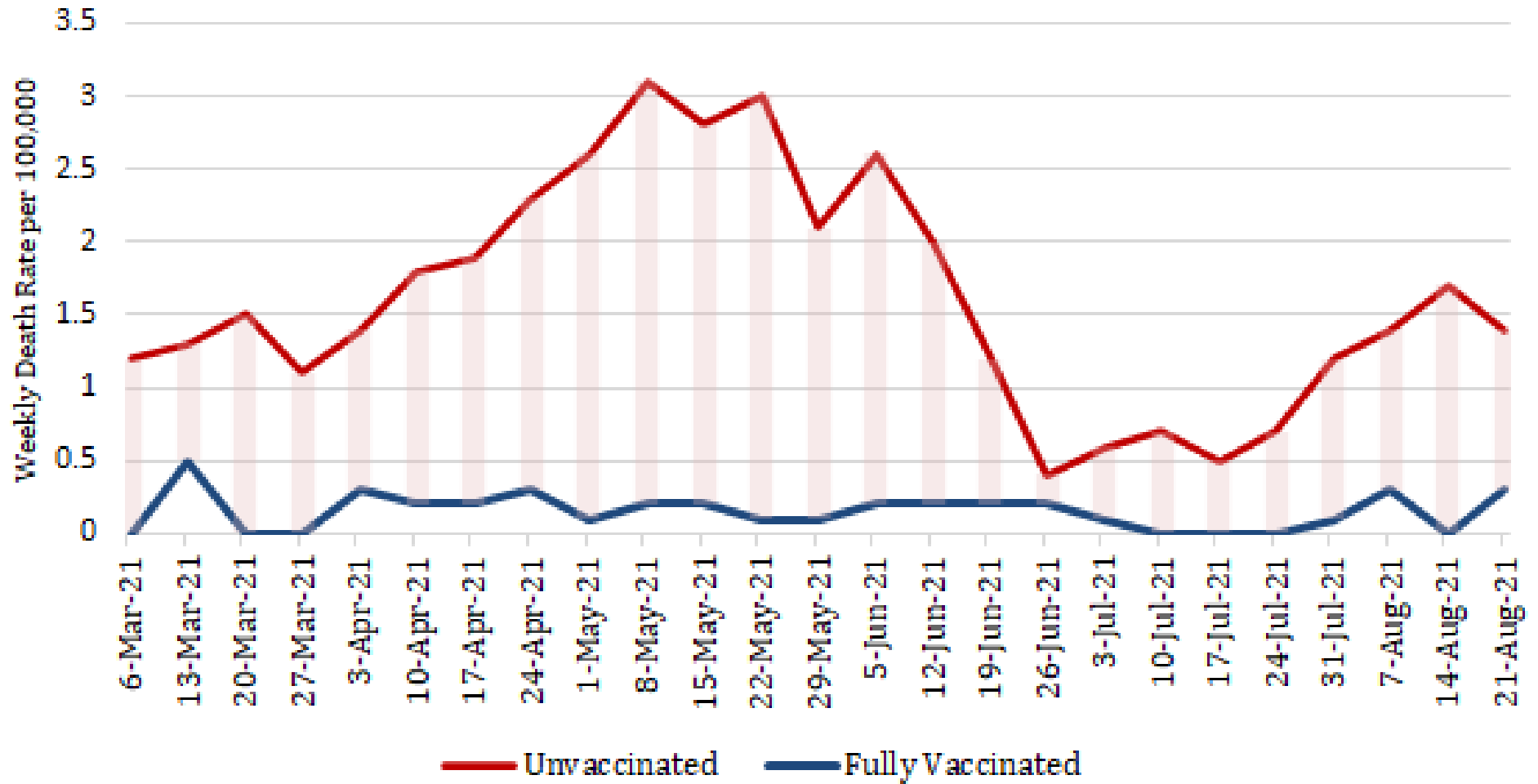
# Weekly Hospitalization Rate per 100,000 by Vaccination Status



**Notes:**

Includes cases among Chicago residents reported into the Illinois Electronic Disease Surveillance System (I-NEDSS) with date of specimen collection 1/1/2021-8/21/2021, pulled 8/25/2021. Vaccination status obtained from the Illinois Comprehensive Automated Immunization Registry (I-CARE) registry. Vaccinated defined as having had at least one dose prior to a positive test. Fully vaccinated defined as completion of vaccine series at least 14 days prior to a positive test. Rate for vaccinated calculated as total hospitalized cases divided by cumulative vaccinated at the end of each week, multiplied by 100,000. Rate for unvaccinated calculated as total hospitalized cases divided by total population minus cumulative vaccinated at the end of each week, multiplied by 100,000.

# Weekly Death Rate per 100,000 by Vaccination Status



## Notes:

Includes cases among Chicago residents reported into the Illinois Electronic Disease Surveillance System (I-NEDSS) with date of specimen collection 1/1/2021-8/21/2021, pulled 8/25/2021. Vaccination status obtained from the Illinois Comprehensive Automated Immunization Registry (I-CARE) registry. Vaccinated defined as having had at least one dose prior to a positive test. Fully vaccinated defined as completion of vaccine series at least 14 days prior to a positive test. Rate for vaccinated calculated as total case deaths divided by cumulative vaccinated at the end of each week, multiplied by 100,000. Rate for unvaccinated calculated as total case deaths divided by total population minus cumulative vaccinated at the end of each week, multiplied by 100,000.