

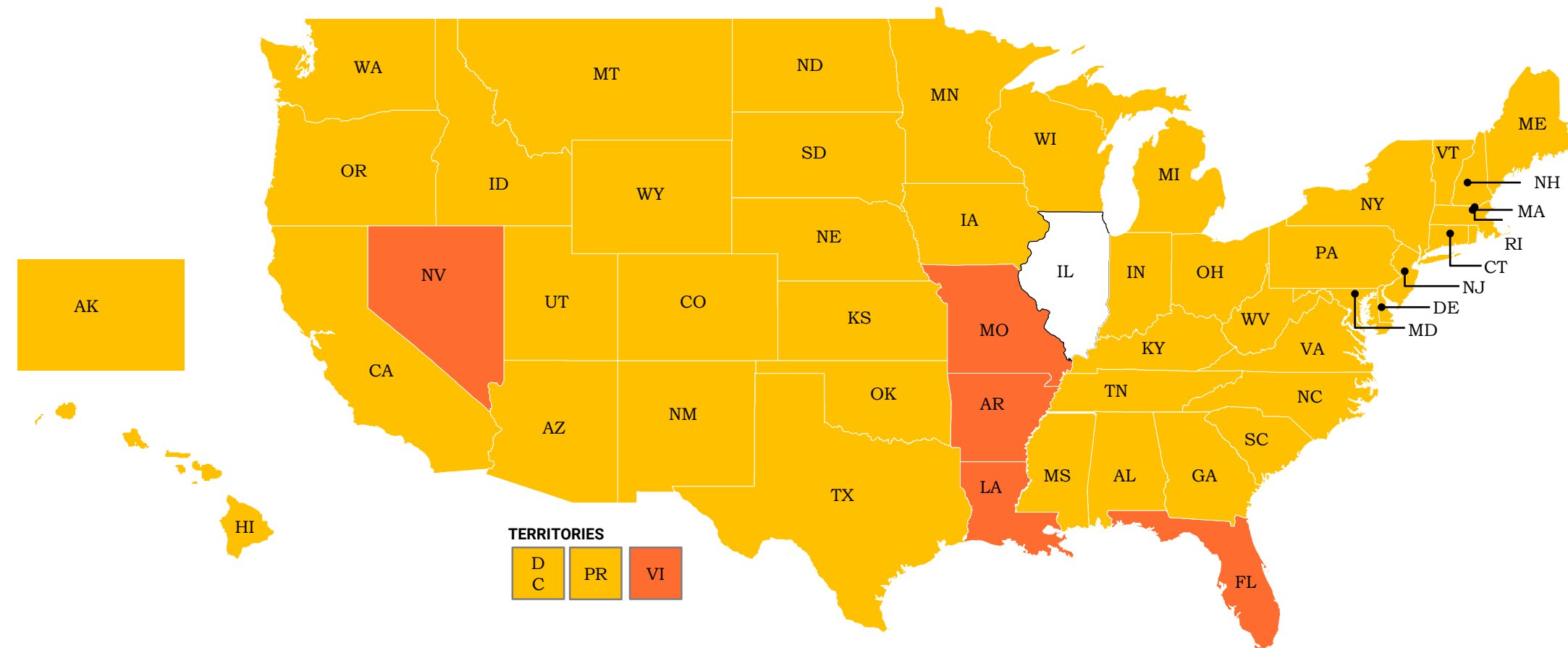
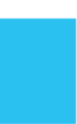
PROTECT
CHICAGO ★

PROTEGE A
CHICAGO ★

Chicago COVID-19 Community Risk Matrix - Phase V

	Very high risk	High risk	Moderate risk	Lower risk	Low risk: Controlled transmission
COVID-19 cases diagnosed per day <small>Chicago residents 7-day rolling daily average</small>	800+	400 – 799	200 – 399	20 – 199 current: 108 Increasing	<20
COVID-19 test positivity <small>Chicago residents 7-day rolling daily average</small>	10%+	6.6 - 9.9%	5.0 - 6.5%	2 - 4.9%	<2% current: 1.8% Increasing
Hospital beds(non-ICU) occupied by COVID patients <small>Chicago hospitals 7-day rolling daily average</small>	1250+	750-1249	250 - 749	100 - 249	<100 current: 89 Increasing
ICU beds occupied by COVID patients <small>Chicago hospitals 7-day rolling daily average</small>	400+	300 - 399	100 – 299	20 - 99 current: 26 Declining	<20
Additional considerations within each risk level	<i>*Metric will revert to very high risk if 7+ consecutive days \geq15% higher than the week prior</i>	<i>*Metric will revert to high risk if 5+ consecutive days \geq10% higher than the week prior</i>	<i>Metrics must continue to decrease or remain stable relative to the week prior</i>	<i>Metrics must continue to decrease or remain stable relative to the week prior</i>	<i>Metrics must continue to decrease or remain stable relative to the week prior</i>

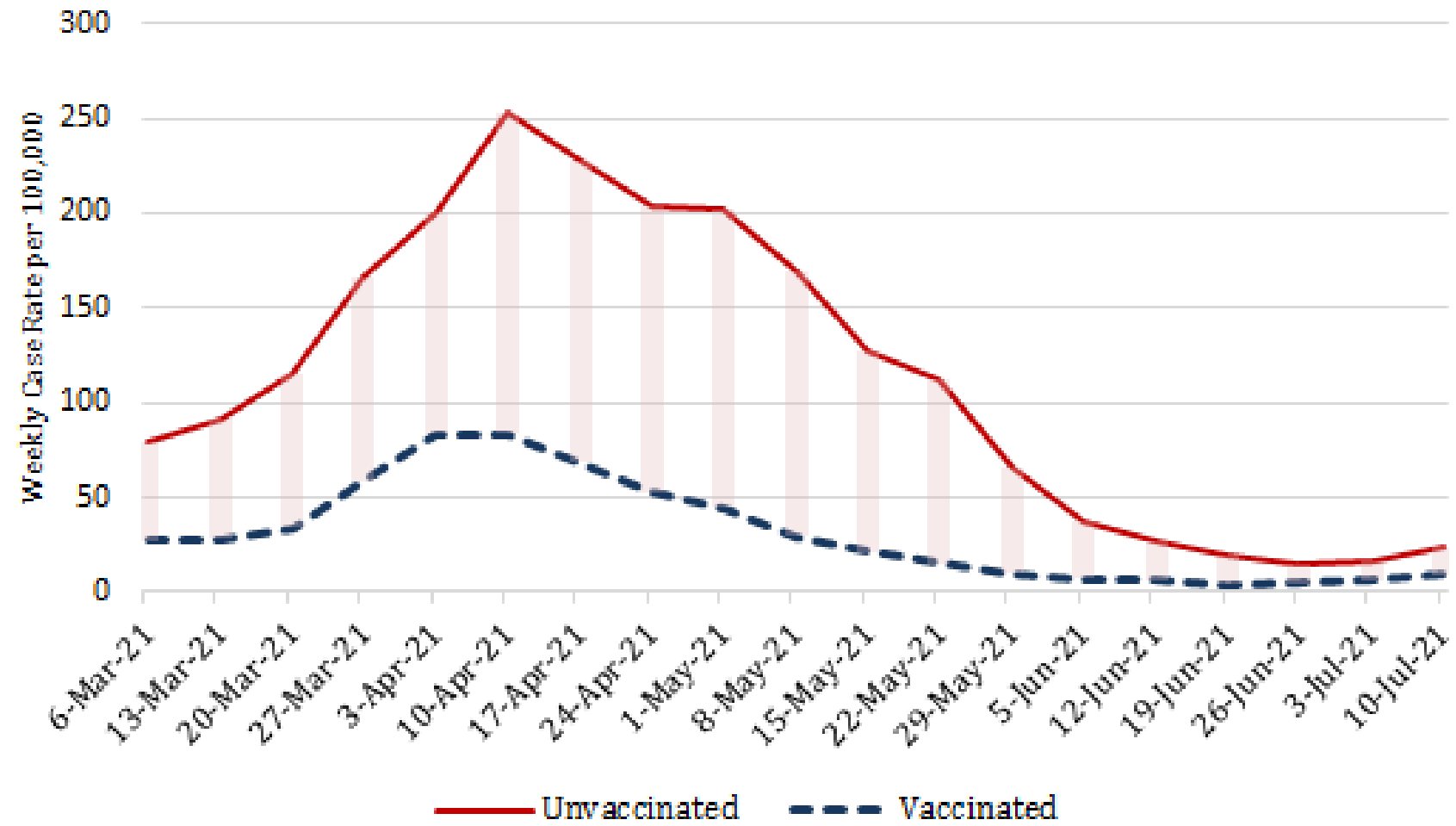
Chicago Adds 3 States and 1 Territory to Travel Advisory



Legend:
Red: ≥ 15 daily cases per 100k
Yellow: Less than 15 daily cases per 100k

All other U.S. Territories are categorized as yellow

Weekly Case Rate per 100,000 by Vaccination Status

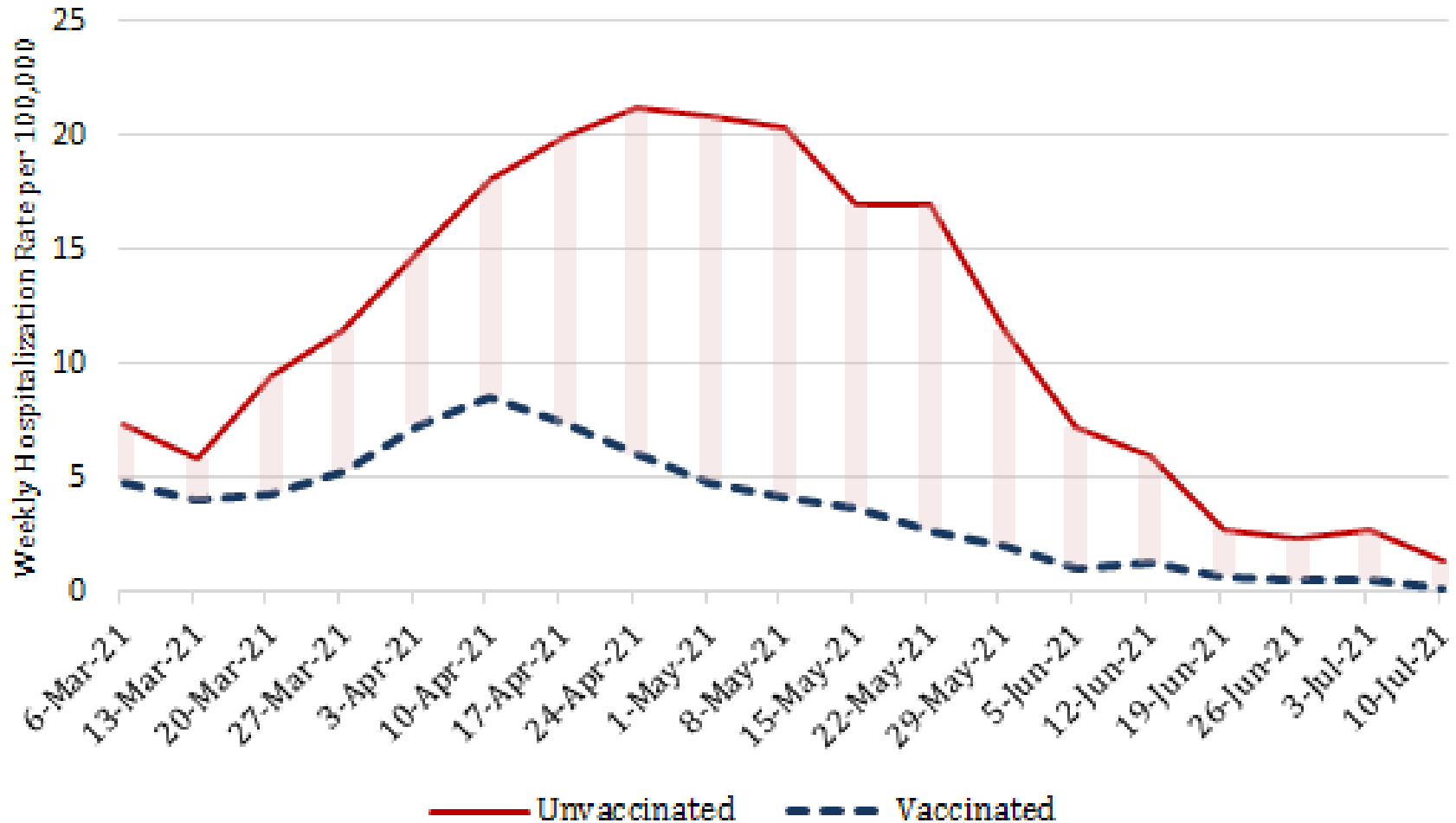
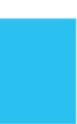


Notes:

Includes cases among Chicago residents reported into the Illinois Electronic Disease Surveillance System (I-NEDSS) with date of specimen collection 1/1/21-7/10/21, pulled 7/13/2021. Vaccination status obtained from the Illinois Comprehensive Automated Immunization Registry (I-CARE) registry; Vaccinated defined as having had at least one dose **prior to** a positive test. Rate for vaccinated calculated as total cases divided by cumulative vaccinated at the end of each week, multiplied by 100,000. Rate for unvaccinated calculated as total cases divided by total population minus cumulative vaccinated at the end of each week, multiplied by 100,000.



Weekly Hospitalization Rate per 100,000 by Vaccination Status

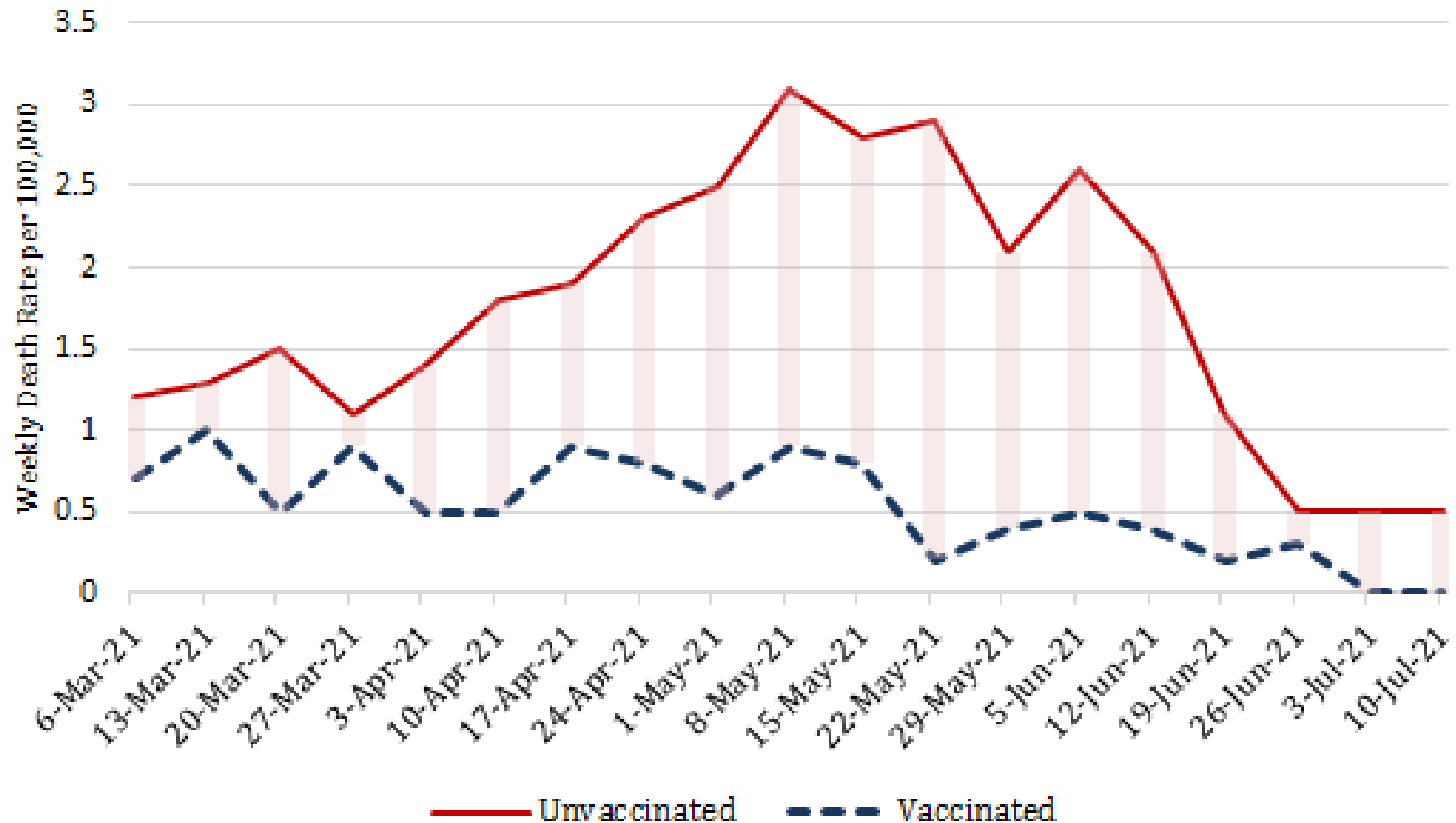


Notes:

Includes cases among Chicago residents reported into the Illinois Electronic Disease Surveillance System (I-NEDSS) with date of specimen collection 1/1/21-7/10/21, pulled 7/13/2021. Vaccination status obtained from the Illinois Comprehensive Automated Immunization Registry (I-CARE) registry; Vaccinated defined as having had at least one dose **prior to** a positive test. Rate for vaccinated calculated as total hospitalized cases divided by cumulative vaccinated at the end of each week, multiplied by 100,000. Rate for unvaccinated calculated as total hospitalized cases divided by total population minus cumulative vaccinated at the end of each week, multiplied by 100,000.



Weekly Death Rate per 100,000 by Vaccination Status



Notes:

Includes cases among Chicago residents reported into the Illinois Electronic Disease Surveillance System (I-NEDSS) with date of specimen collection 1/1/21-7/10/21, pulled 7/13/2021. Vaccination status obtained from the Illinois Comprehensive Automated Immunization Registry (I-CARE) registry; Vaccinated defined as having had at least one dose **prior to** a positive test. Rate for vaccinated calculated as total cases known to have died divided by cumulative vaccinated at the end of each week, multiplied by 100,000. Rate for unvaccinated calculated as total cases known to have died divided by total population minus cumulative vaccinated at the end of each week, multiplied by 100,000.



Taking COVID-19 seriously at Lollapalooza



- **Get vaccinated!**
- Wear a mask if you are unvaccinated
- **Reminder from the FBI:** If you make or buy a fake COVID-19 vaccination record card, you endanger yourself and those around you, and you are breaking the law

BEFORE THE EVENT:

- ★ Get vaccinated! Getting vaccinated now will still give you some protection for Lollapalooza weekend – though if you are not Fully Vaccinated, you will still need a negative test.
- ★ Bring your vaccine card or proof of negative COVID-19 test within the last 72 hours
- ★ Do not attend Lollapalooza if you have symptoms of COVID-19 even if you have been vaccinated



FIND YOUR VACCINE AT chicago.gov/covidvax



Age 12+ appointments available now



Appointments are available right now on [Zocdoc.com/vaccine](https://www.zocdoc.com/vaccine) and at **312-746-4835**

COVID-19 Vaccine



Michigan Avenue Immediate Care - 1605 Location

COVID-19 Vaccination Facility
Michigan Avenue PC Vaccine 1605 - MODERNA Vaccine
180 N Michigan Ave, Suite 1605, Chicago, IL, 60601

📅 Appointments available Today

[View availability](#)



Loop Medical Center - Streeterville Location

COVID-19 Vaccination Facility
Loop Medical Center - Vaccine
432 East Grand Ave, Suite B, Chicago, IL, 60611

📅 Appointments available Today

[View availability](#)

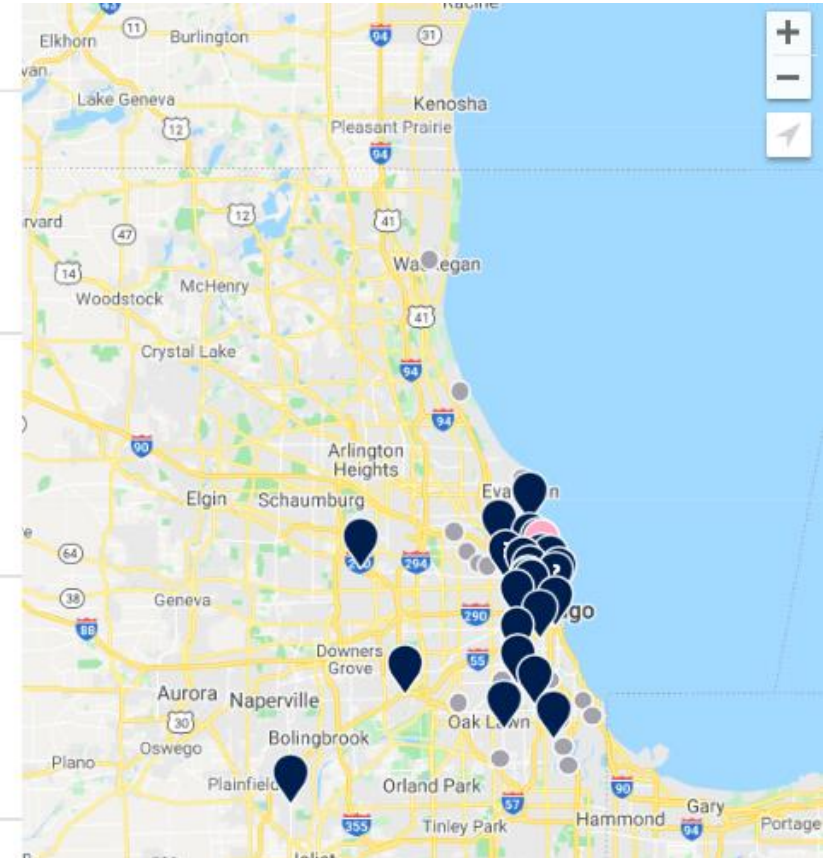


Instavaxx LLC - Chicago Location

COVID-19 Vaccination Facility
Instavaxx LLC
2674 N Halsted St, Chicago, IL, 60614

📅 Appointments available Today

[View availability](#)





National Immunization Survey Results

Adult COVID-19 Module

July 2021



National Immunization Survey: Adult COVID-19 Module

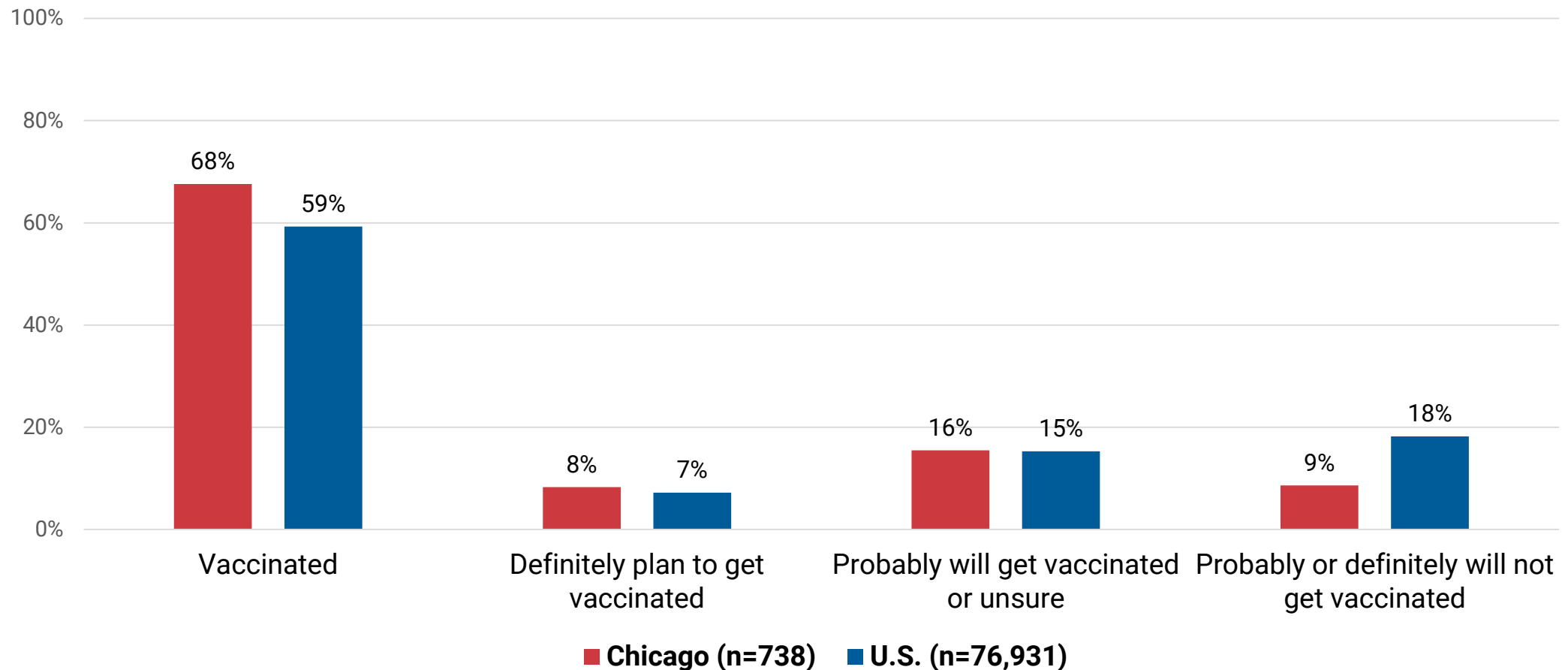
- Data were collected from adults ≥ 18 years-old by telephone interview using random digit dialing of cell phones stratified by U.S. states, territories, and five local jurisdictions (including Chicago)
- Data weighed to represent the non-institutionalized U.S. population and COVID-19 vaccination rates based on CDC's COVID-19 data tracker as of May 15, 2021
- Data collection period: April 22 – May 29, 2021
- All responses were self-reported
- For more information: <https://www.cdc.gov/vaccines/imz-managers/nis/about.html#current-surveys>



★ Demographics of NIS respondents in Chicago (n=738)

	Survey Respondents	
	n	%
Overall	738	100
Sex		
Male	342	46.3
Female	391	53.0
Age		
18-49	476	64.5
50-64	170	23.0
65+	84	11.4
Race/ethnicity		
Latinx	137	18.6
Black, non-Latinx	154	20.9
White, non-Latinx	342	46.3
Other	86	11.7

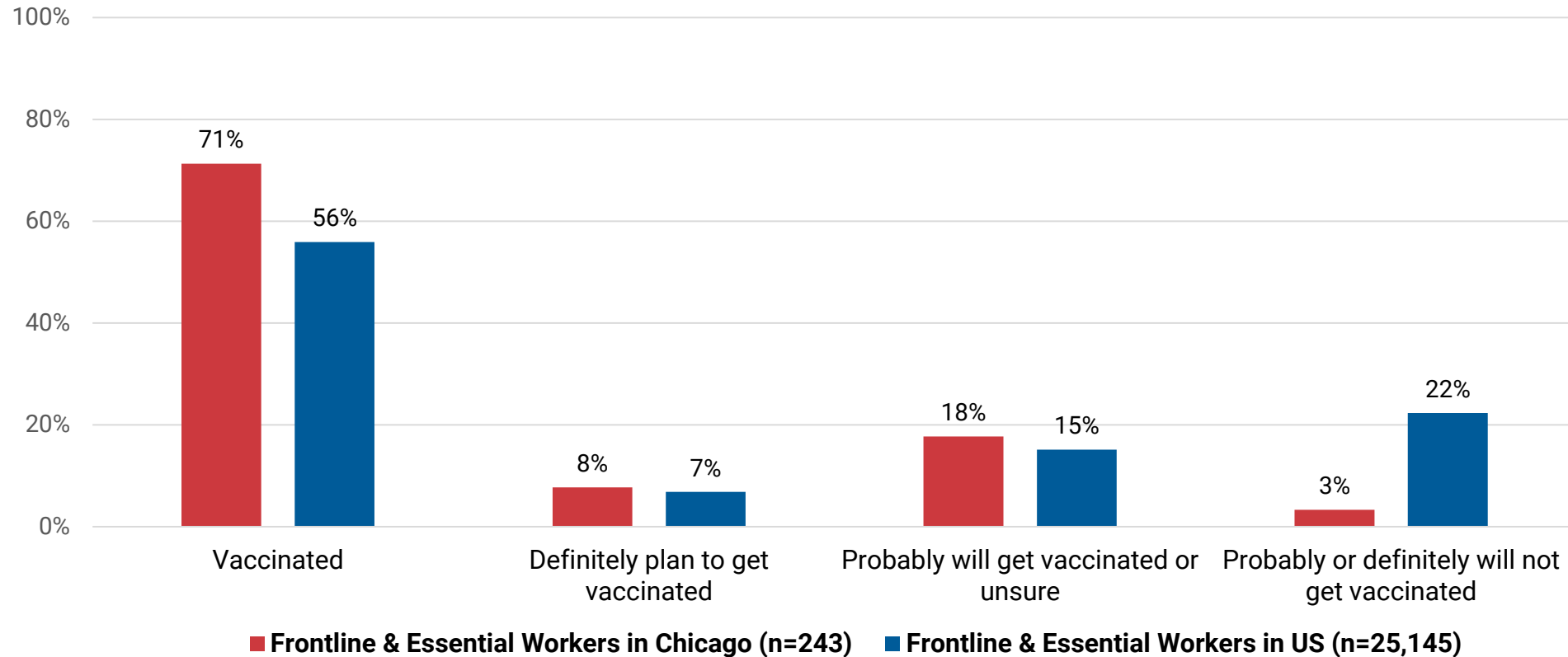
Vaccination was more common in Chicago than in the overall U.S. and hesitancy* was less common



*Hesitancy defined as the proportion of respondents reporting they "probably or definitely would not" get vaccinated

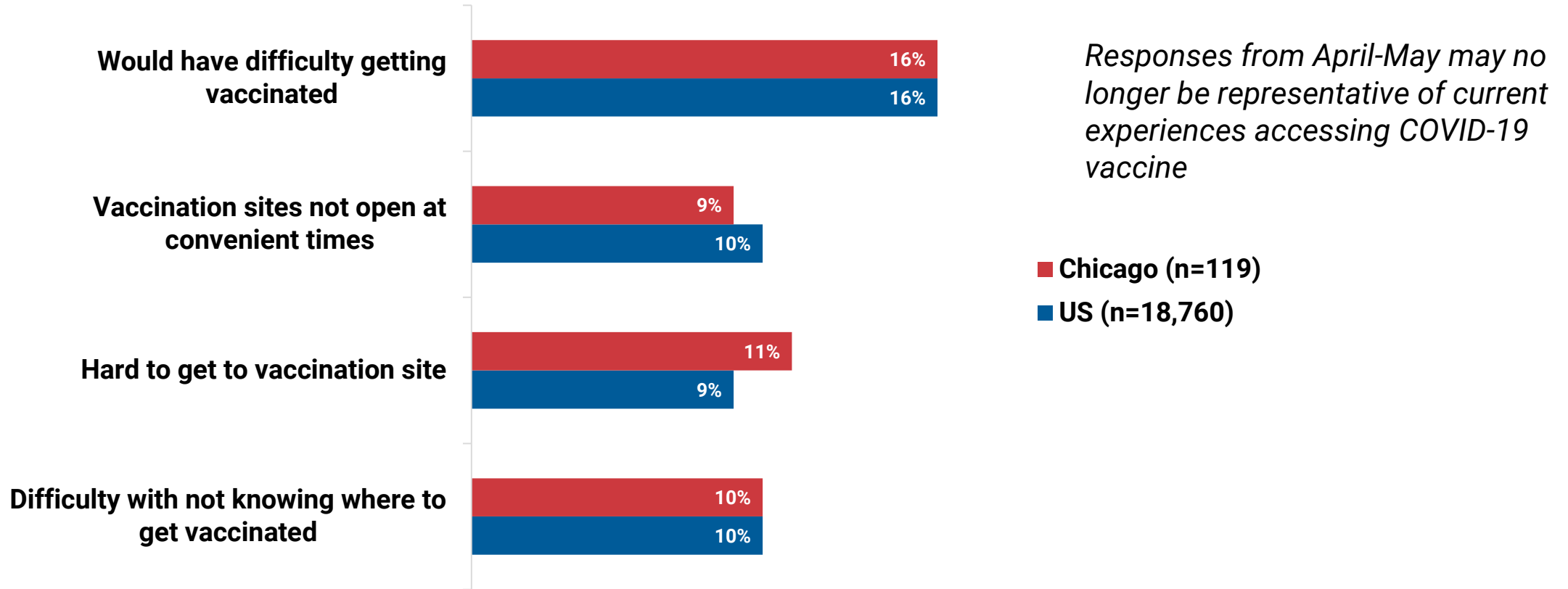


Vaccination rates were higher & hesitancy rates were lower among Chicago's frontline workers vs. all frontline workers surveyed





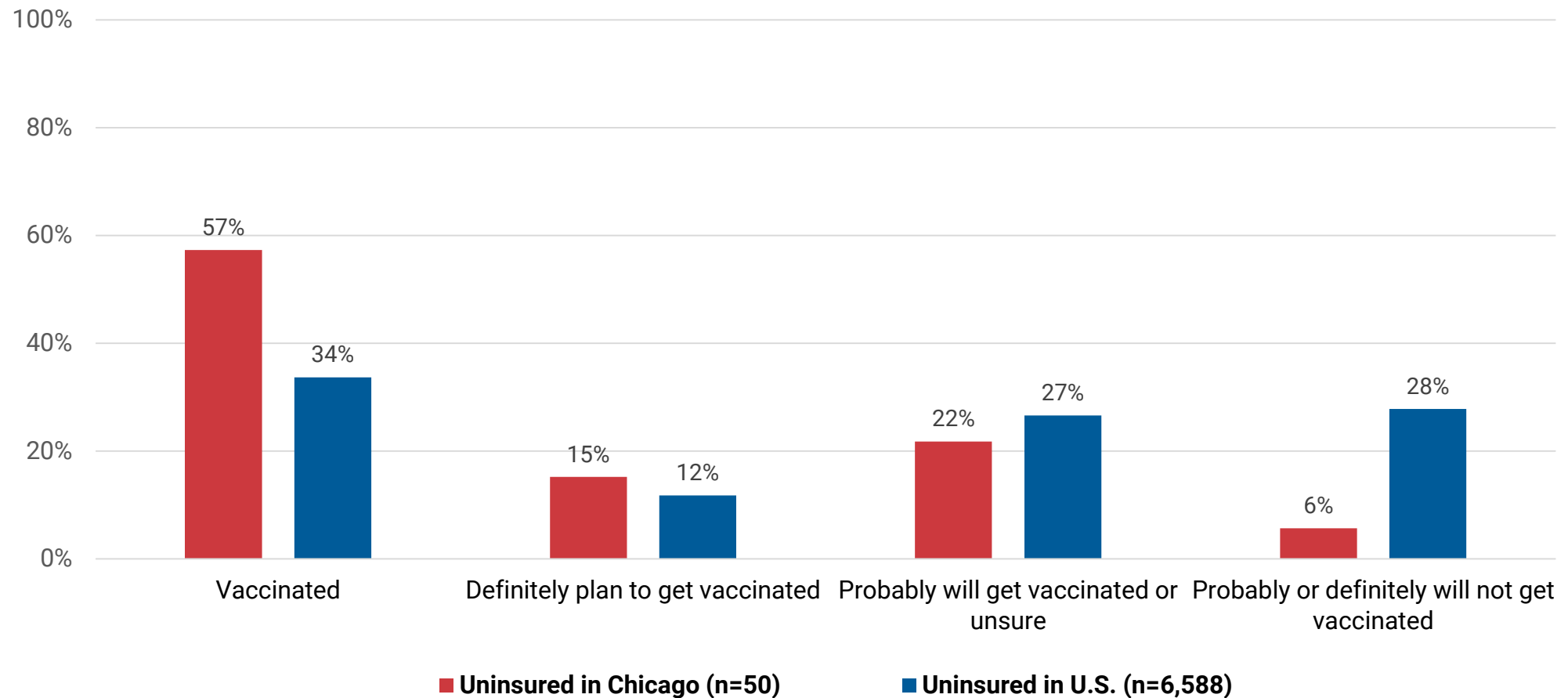
Few unvaccinated respondents reported difficulties accessing vaccine, in Chicago and overall



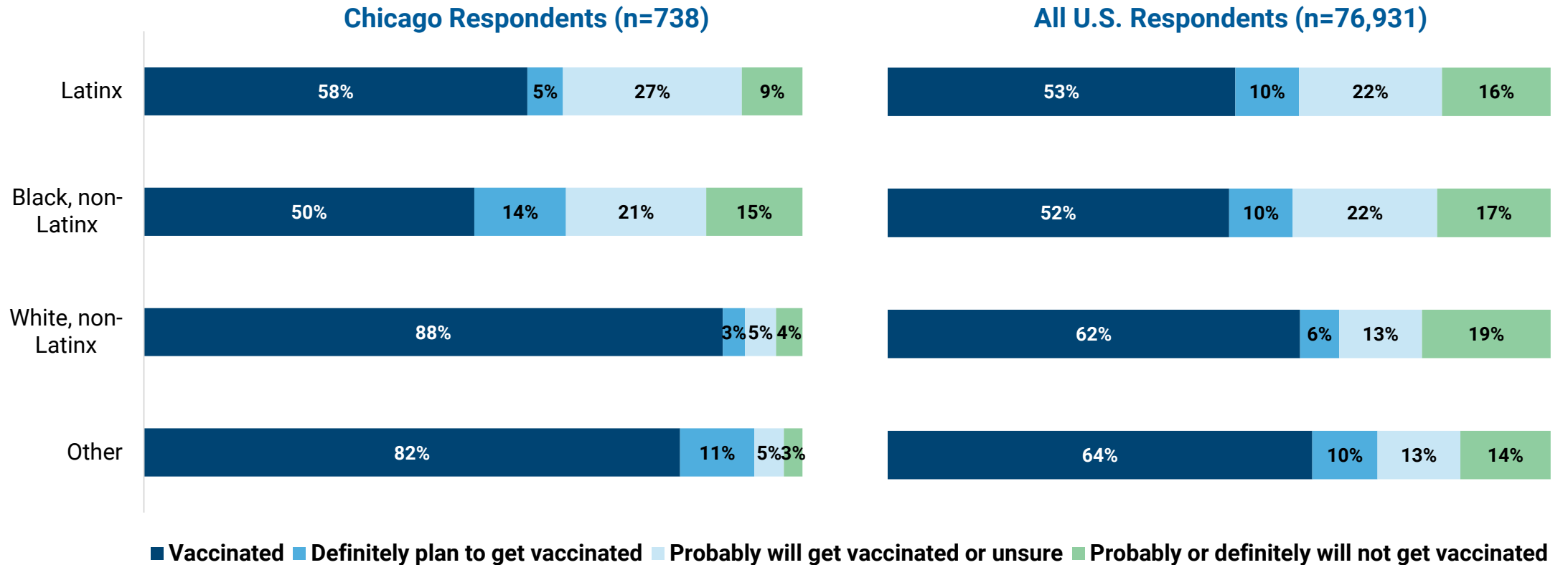
Estimated demographic distributions (age, race/ethnicity) of those reporting difficulties accessing vaccine were not available for Chicago residents, due to low number of unvaccinated respondents (n=119/738, or 16% of all Chicago respondents)



Vaccination rates were higher & hesitancy rates were lower among uninsured respondents in Chicago vs. all uninsured respondents in U.S.



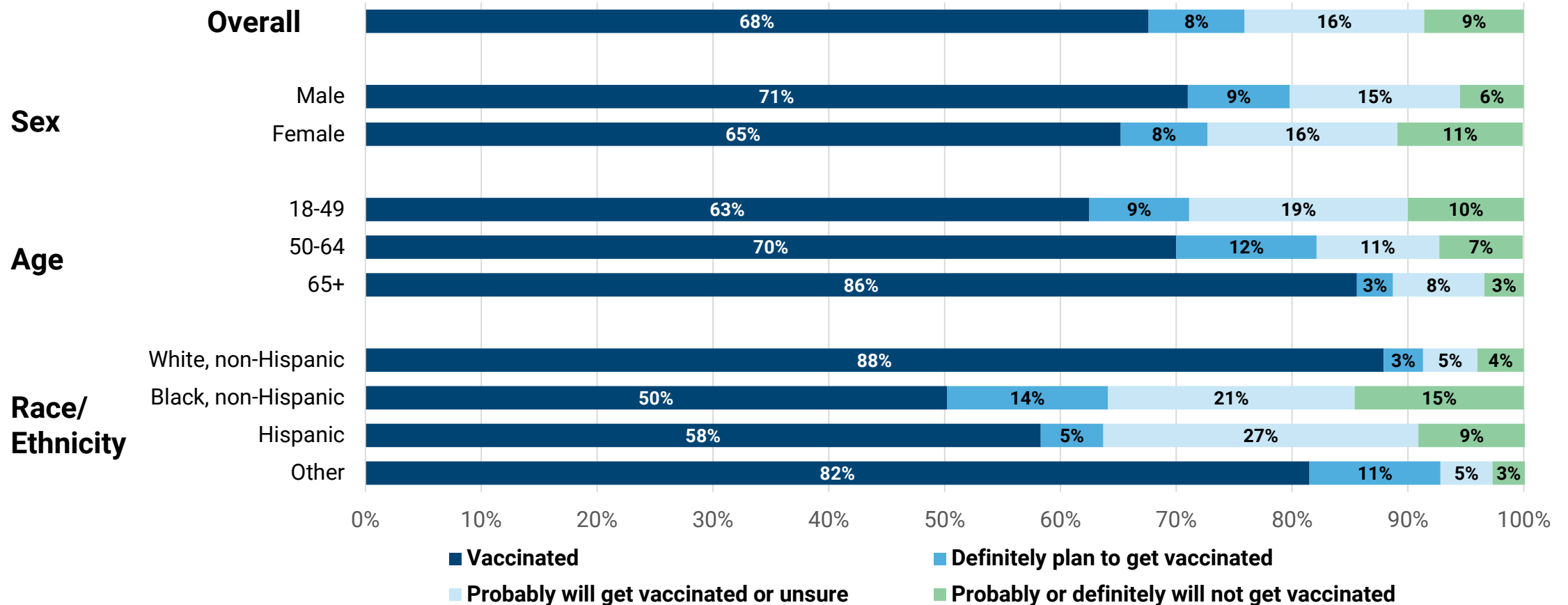
Chicago's estimated vaccination rates were higher than national estimates among respondents of all races/ethnicities, except Black, non-Latinx



Other race/ethnicity includes, Asian, American Indian, Alaska Native, Native Hawaiian or other Pacific Islander, and Other

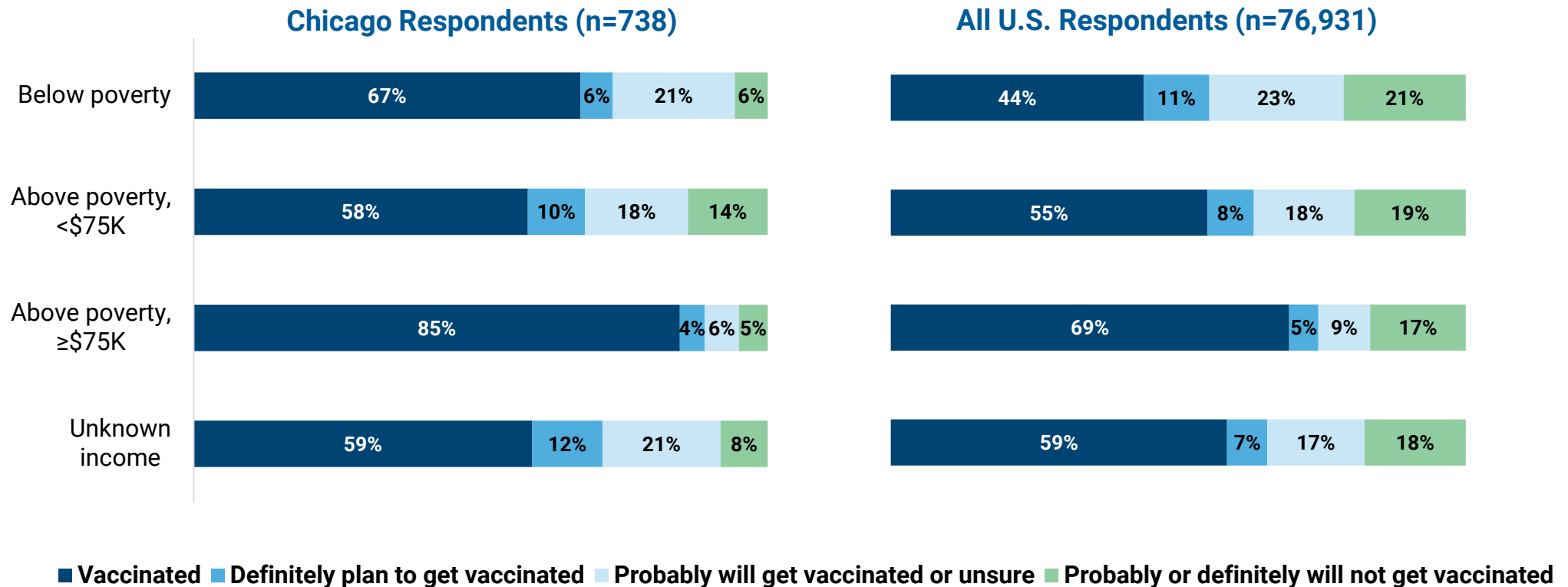


COVID-19 vaccination and intent among Chicago adults age 18+ years, by sociodemographic characteristics



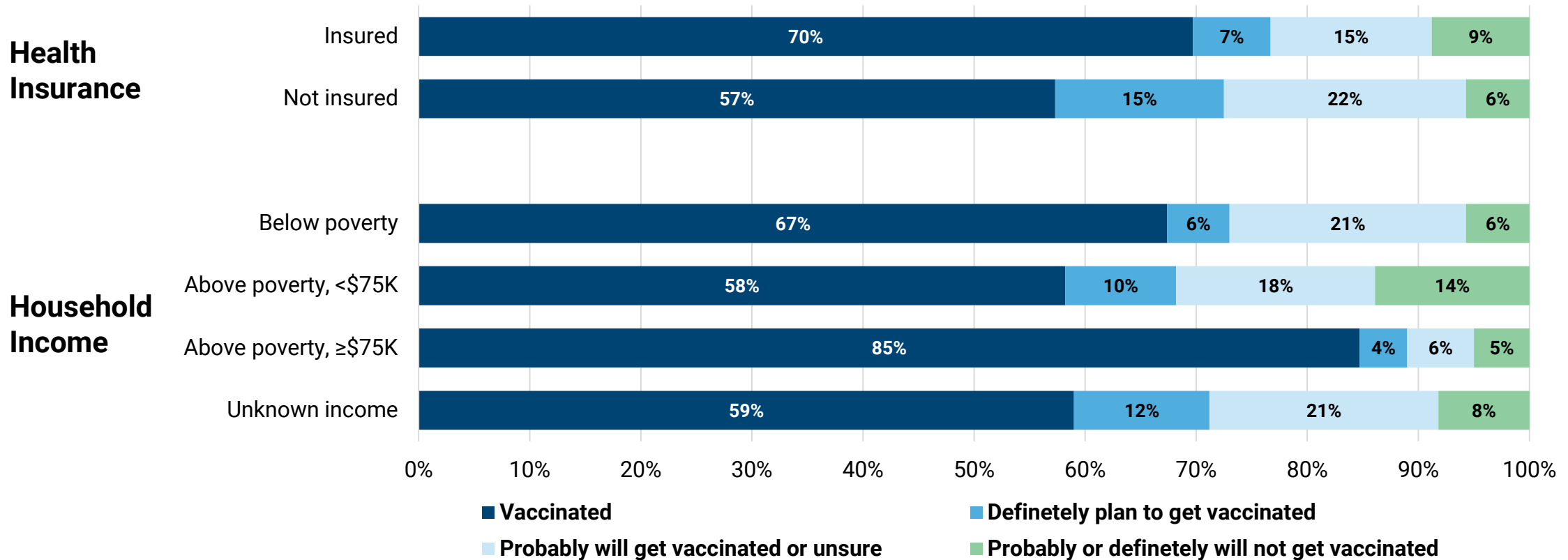
Other race/ethnicity includes, Asian, American Indian, Alaska Native, Native Hawaiian or other Pacific Islander, and Other

Vaccination coverage was higher & hesitancy rates were lower among respondents with income below poverty levels in Chicago vs. all of U.S



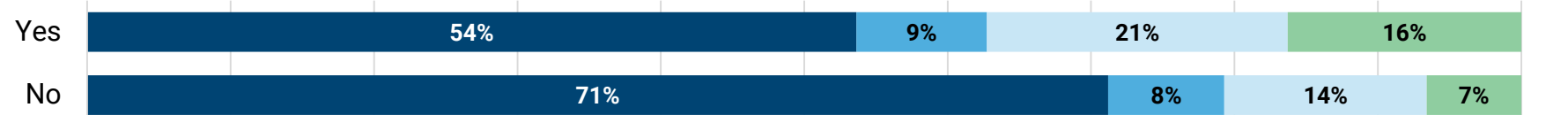


COVID-19 vaccination and intent among Chicago adults age 18+ years, by health insurance and household income



COVID-19 vaccination and intent among Chicago adults age 18+ years, by sociodemographic characteristics

Ever had COVID-19



High risk health condition



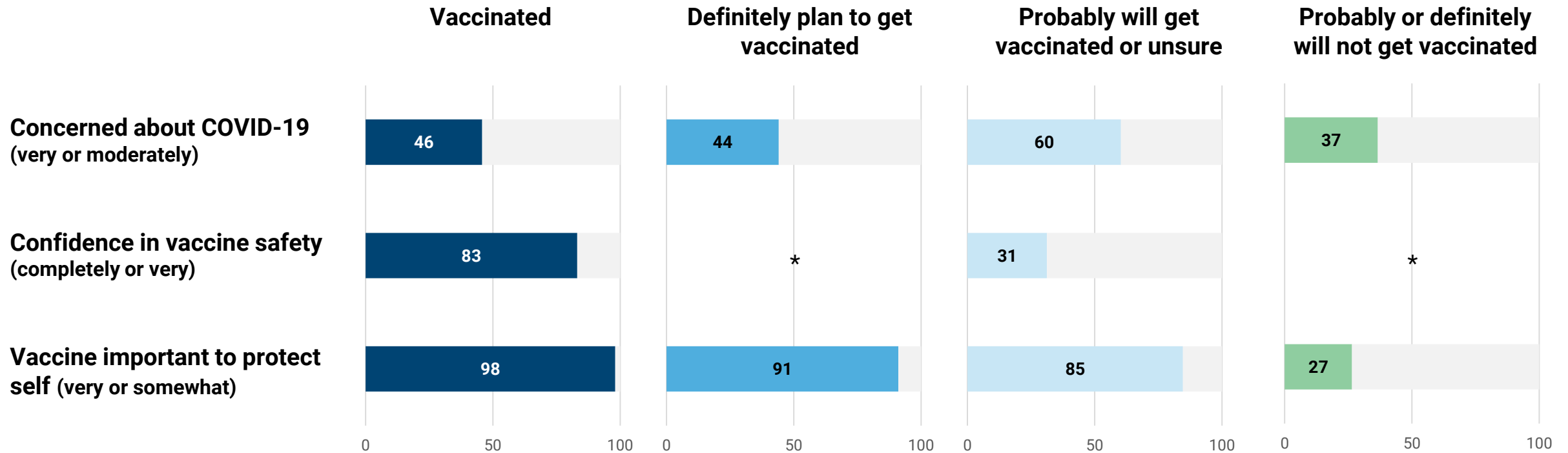
Disability



■ Vaccinated
■ Definitely plan to get vaccinated
■ Probably will get vaccinated or unsure
■ Probably or definitely will not get vaccinated



COVID-19 vaccine key attitudes and experiences among Chicago adults age 18+ years, by vaccination and intent

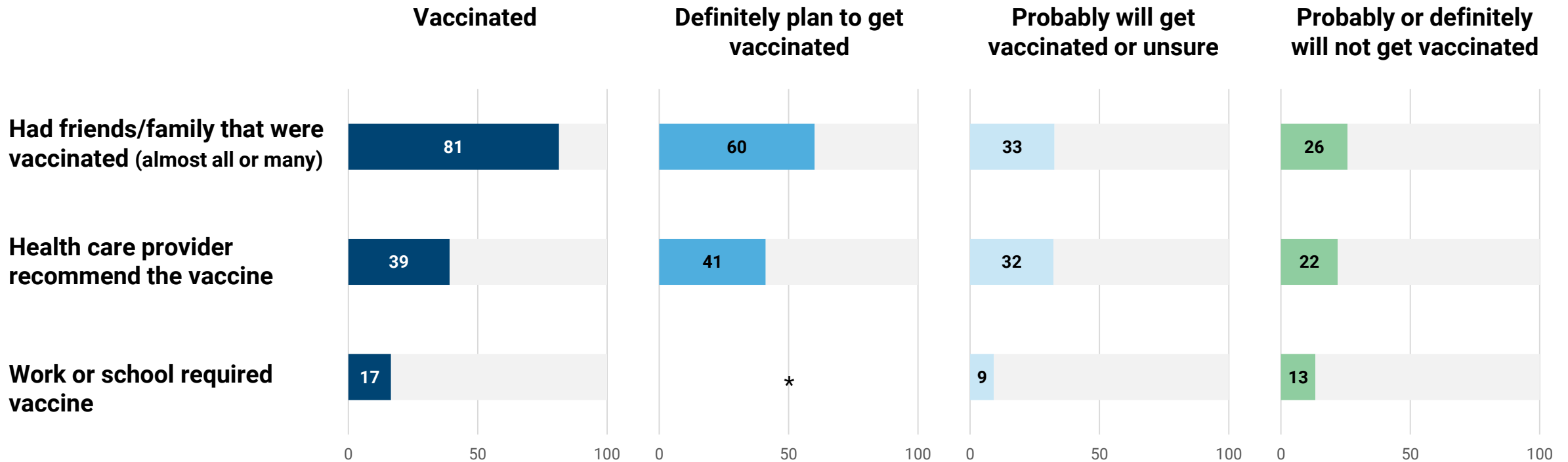


* Cells with denominator n < 30 are suppressed.





COVID-19 vaccine key attitudes and experiences among Chicago adults age 18+ years, by vaccination and intent



* Cells with denominator n<30 are suppressed.

