



Phase IV Re-Opening Metrics and Vax Updates

May 21st, 2021

(Data current through 5/19/2021)

Chicago COVID-19 Community Metrics, Phase IV, current status ****proposed change to CLI ED metric**

	Risk/Trajectory Reported as of 5/20/2021	Very high risk	High risk	Moderate risk	Lower risk	Controlled transmission
COVID cases diagnosed per day Chicago residents 7-day rolling daily average	MODERATE DECLINING 288	800+ -or- 7+ consecutive days more than 15% higher than daily average one week prior	400 - 799 -or- 5+ consecutive days more than 10% higher than daily average one week prior	200 - 399 -and- decreasing or stable compared to daily average one week prior	20 – 199 -and- decreasing or stable compared to daily average one week prior	<20
COVID test positivity Chicago residents 7-day rolling daily average	LOWER DECLINING 3.2%	10%+ -or- 7+ consecutive days more than 15% higher than daily average one week prior	6.6 - 9.9% -or- 5+ consecutive days more than 10% higher than daily average one week prior	5.0 - 6.5% -and- decreasing or stable compared to daily average one week prior	2 - 4.9% -and- decreasing or stable compared to daily average one week prior	<2%
Emergency dept visits for COVID-like illness Chicago hospitals 7-day rolling daily average	MODERATE DECLINING 93	150+ -or- 7+ consecutive days more than 15% higher than daily average one week prior	100-149 -or- 5+ consecutive days more than 10% higher than daily average one week prior	50-99 -and- decreasing or stable compared to daily average one week prior	20-49 -and- decreasing or stable compared to daily average one week prior	<20
Non-ICU beds occupied by COVID patients Chicago hospitals 7-day rolling daily average	MODERATE DECLINING 268	1250+ or- 7+ consecutive days more than 15% higher than daily average one week prior	750 – 1249 -or- 5+ consecutive days more than 10% higher than daily average one week prior	250 - 749	100 - 249	<100
ICU beds occupied by COVID patients Chicago hospitals 7-day rolling daily average	MODERATE DECLINING 127	400+ -or- <20% overall ICU bed availability	300 - 399 -or- <22% overall ICU bed availability	100 - 299	20 - 99	<20

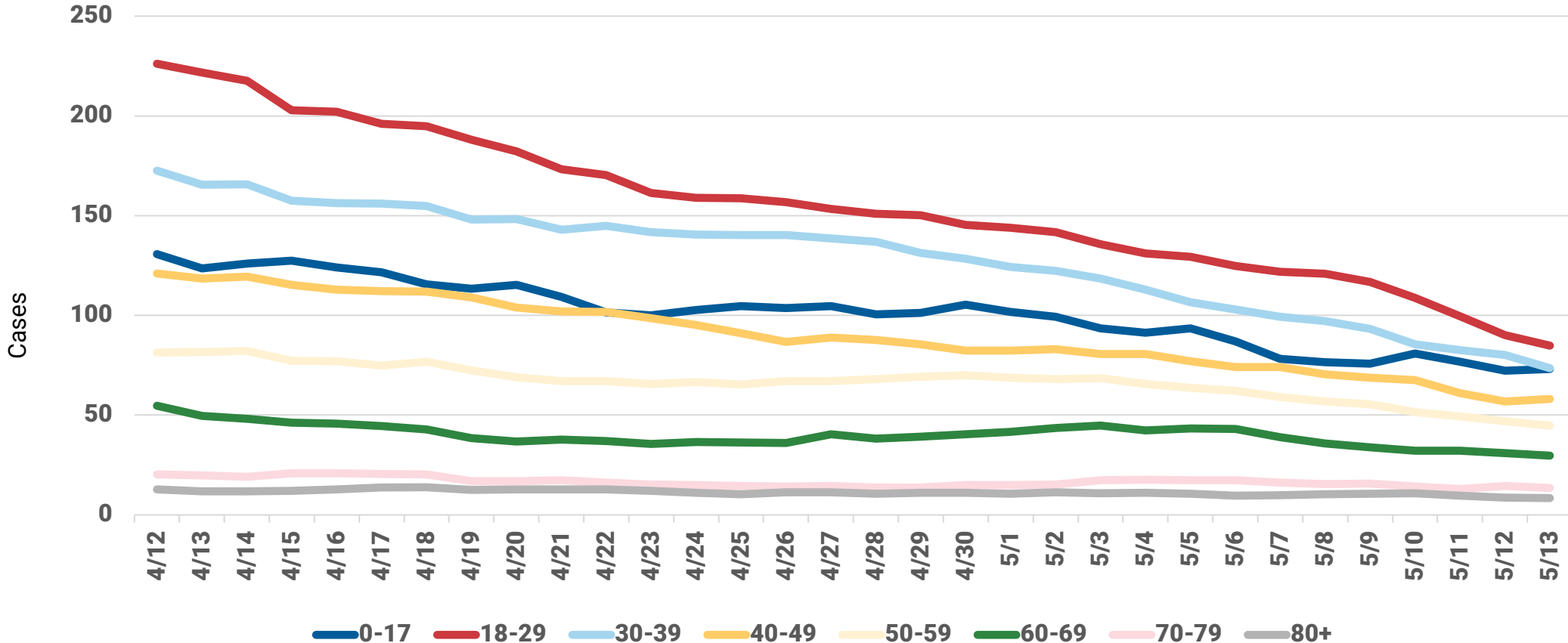


COVID-19 Outcomes by Race/Ethnicity and Geography

Incident cases are highest for 18-29 year olds. All age groups are declining.



COVID-19 Cases, on Specimen Date, by Age Group, rolling 7-day average

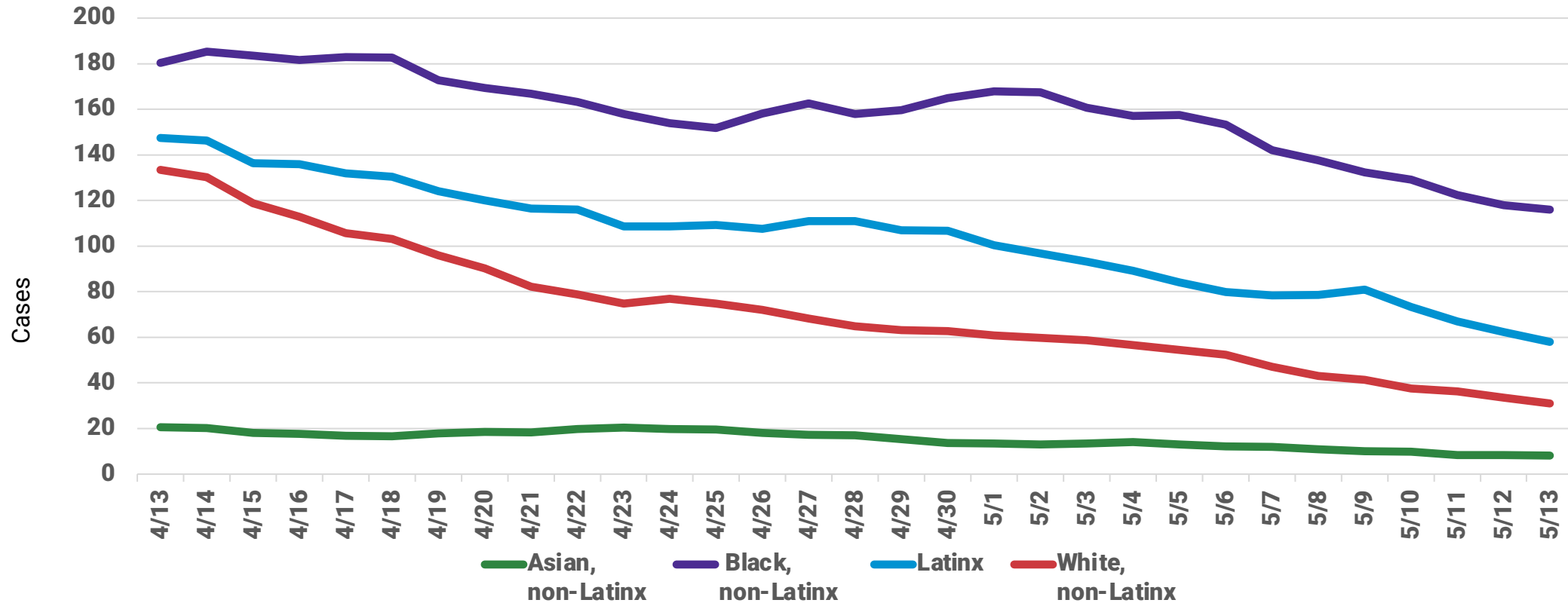


Daily COVID-19 cases with known specimen report date and race/ethnicity information. Case is defined as positive result on PCR or antigen test. This case definition was applied to the entire epidemic beginning on 2/8/2021 therefore these results are different from results reported prior. Source: INEDSS.

Incident cases are highest for Black, non-Latinx Chicagoans. All groups are declining.



COVID-19 Cases, on Specimen Date, by Race/Ethnicity, rolling 7-day average



Daily COVID-19 cases with known specimen report date and race/ethnicity information. Case is defined as positive result on PCR or antigen test. This case definition was applied to the entire epidemic beginning on 2/8/2021 therefore these results are different from results reported prior. Source: INEDSS.

Weekly changes in COVID-19 cases by race/ethnicity and age group for week ending May 15th (comparisons to week ending May 15th)



Age Group (years)	Latinx	% of Age grp	Change from last week	Black, NL	% of Age grp	Change from last week	White, NL	% of Age grp	Change from last week	Asian, NL	% of Age grp	Change from last week	Total (percent)	Change from last week
0-17	90	26%	-27	163	47%	22	55	16%	10	20	6%	13	442 (22%)	-35
18-44	205	28%	-117	376	51%	-178	115	15%	-59	24	3%	-24	953 (47%)	-507
45-64	77	21%	-39	197	54%	-61	68	19%	-26	7	2%	-18	453 (22%)	-195
65+	28	20%	-11	83	58%	4	24	17%	-12	3	2%	-3	172 (9%)	-31
Total	400	25%	-194	819	51%	-213	262	16%	-87	54	3%	-32	2,020	-768

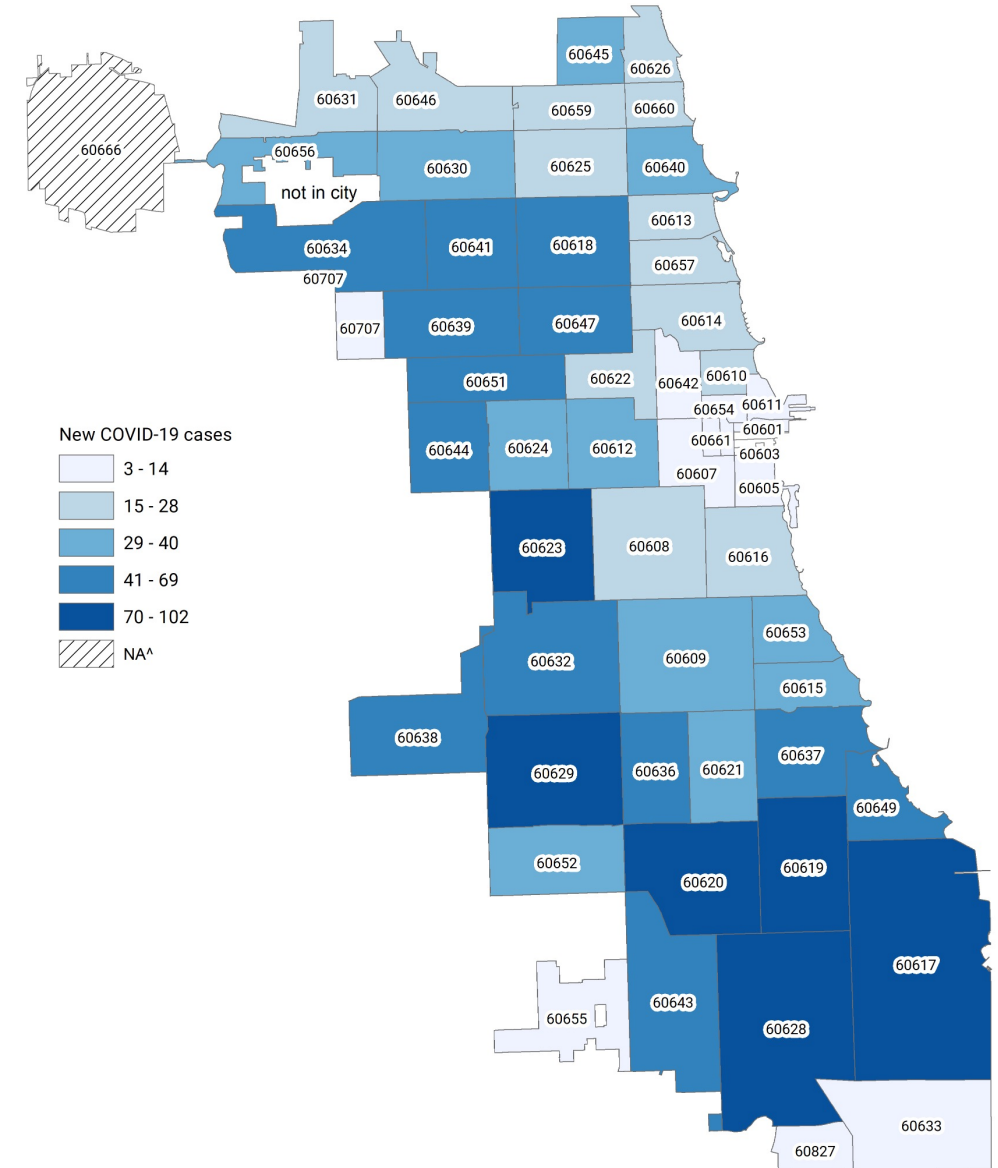
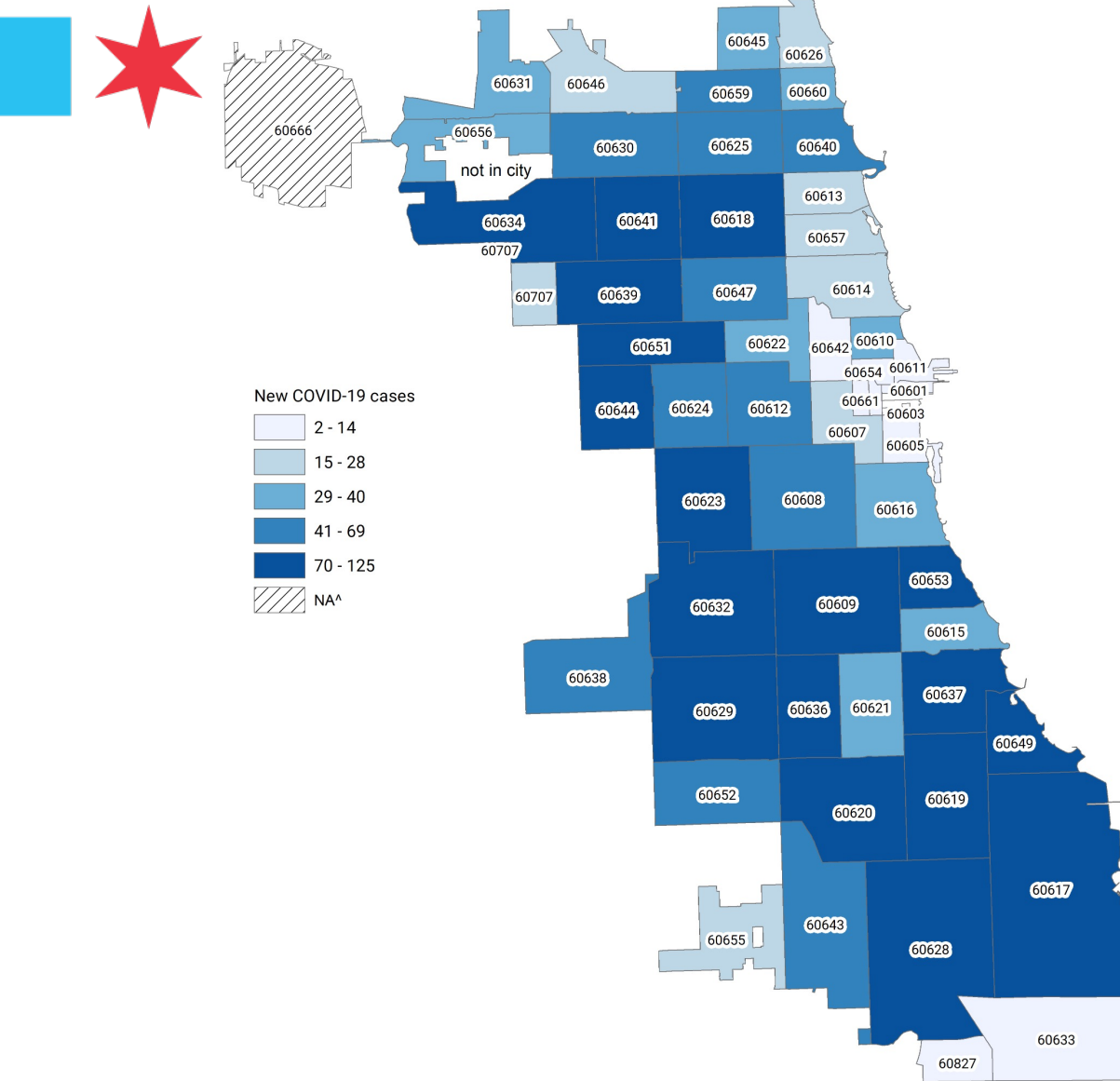
Percentages are computed using confirmed COVID-19 cases with known race/ethnicity.

Data pulled Wednesday 5/18/21

Changes in weekly case counts by zip code

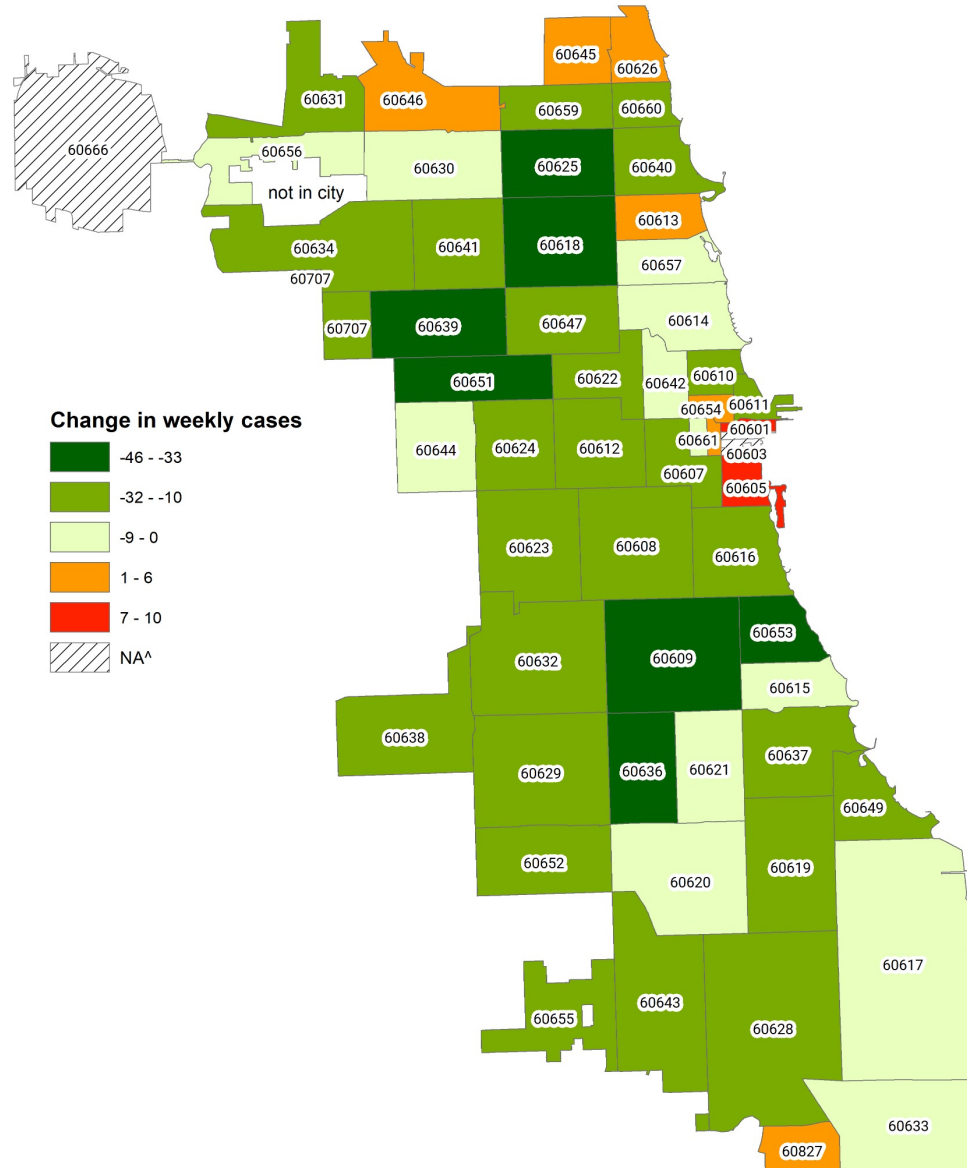
Week ending 5/8/21 (n=2,788)

Week ending 5/15/21 (n=2,020)



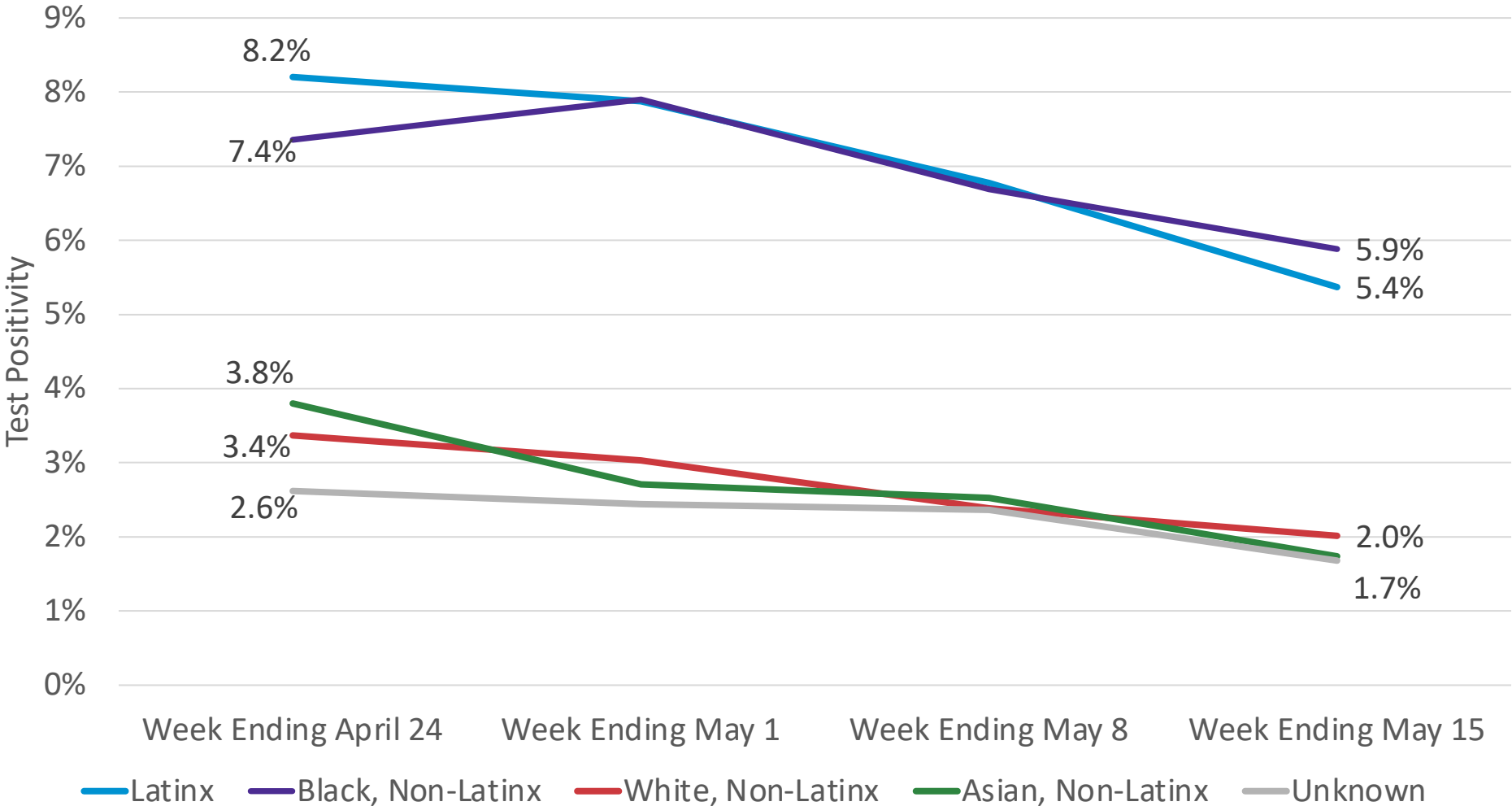
Note: Week is data through the Wednesday after the end date for the week. Week 19 ending May 15th and week 18 ending May 8th

Changes in weekly case counts by zip code week ending May 15th compared to week ending May 8th

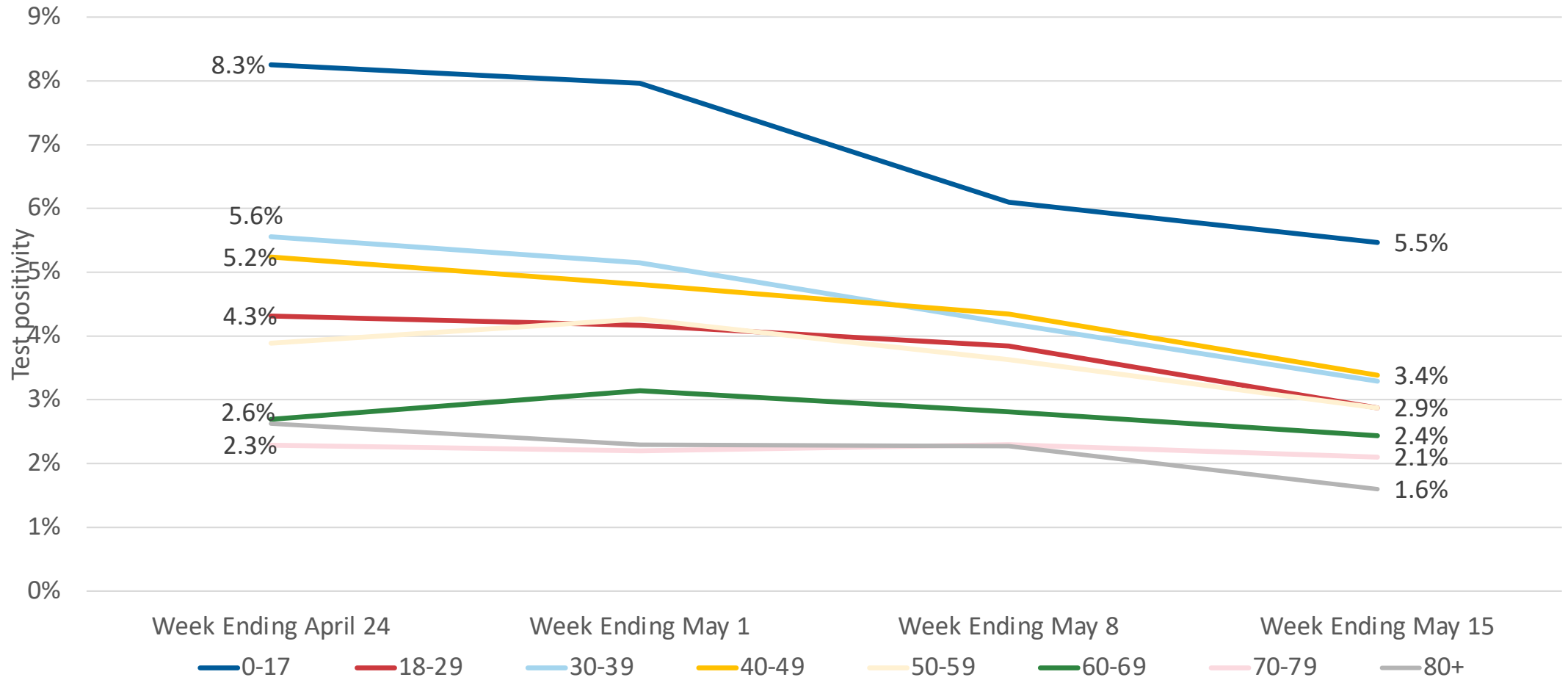


Note: Week is data through the Wednesday after the end date for the week. Week 19 ending May 15th and week 18 ending May 8th

Test positivity by Race-Ethnicity (April 18 – May 15, 2021)



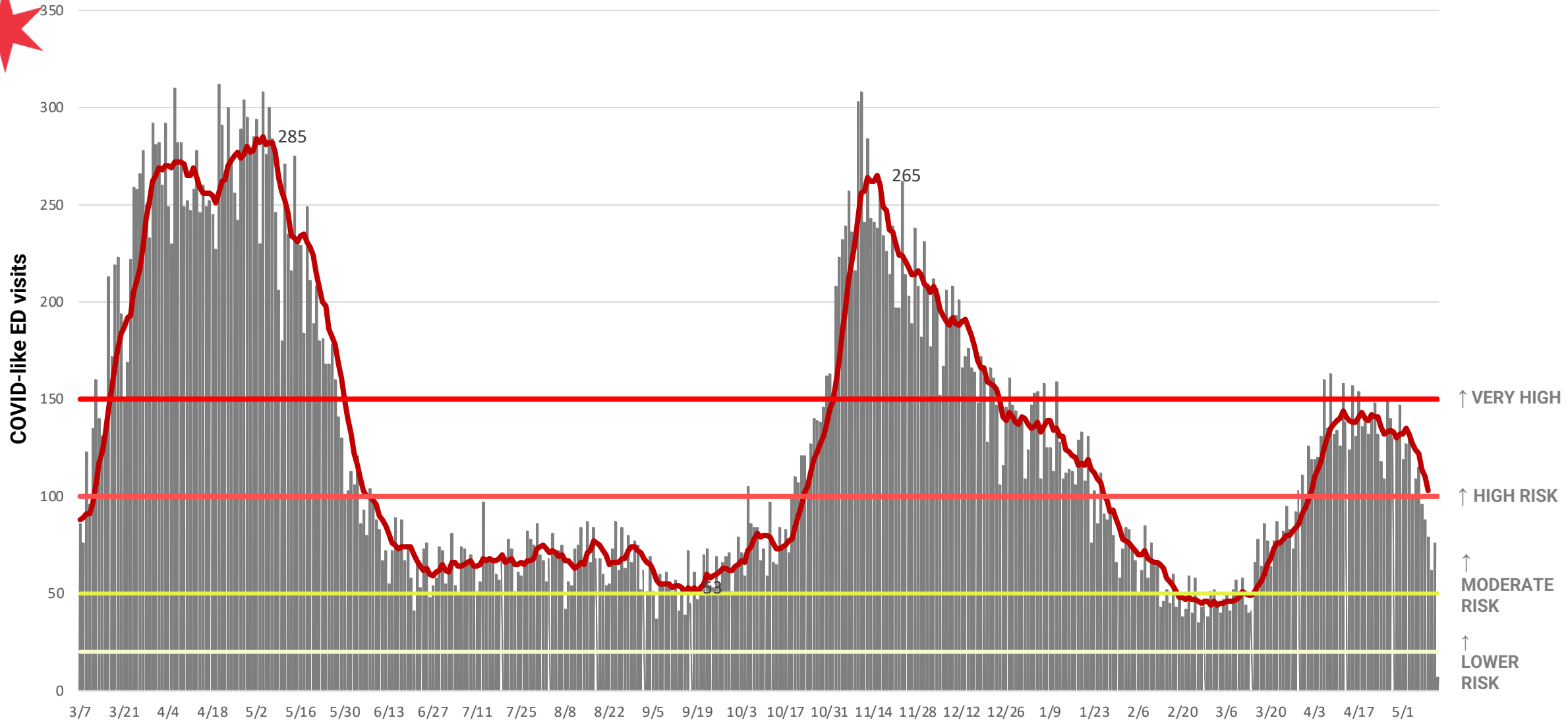
Test positivity by Age through (April 18 – May 15, 2021)





Emergency Department Visits

ED visits for COVID-like illness reached the highest peak in early May 2020 and is currently decreasing.



Count of all emergency department visits, reported with COVID-like symptoms among Chicago residents.
Data Source: Illinois Hospital Emergency Departments reporting to CDPH through the National Syndromic Surveillance Project.



Hospital admissions

COVID-19 hospitalizations, entire epidemic with table.



COVID-19 Hospital admissions, rolling 7-day average



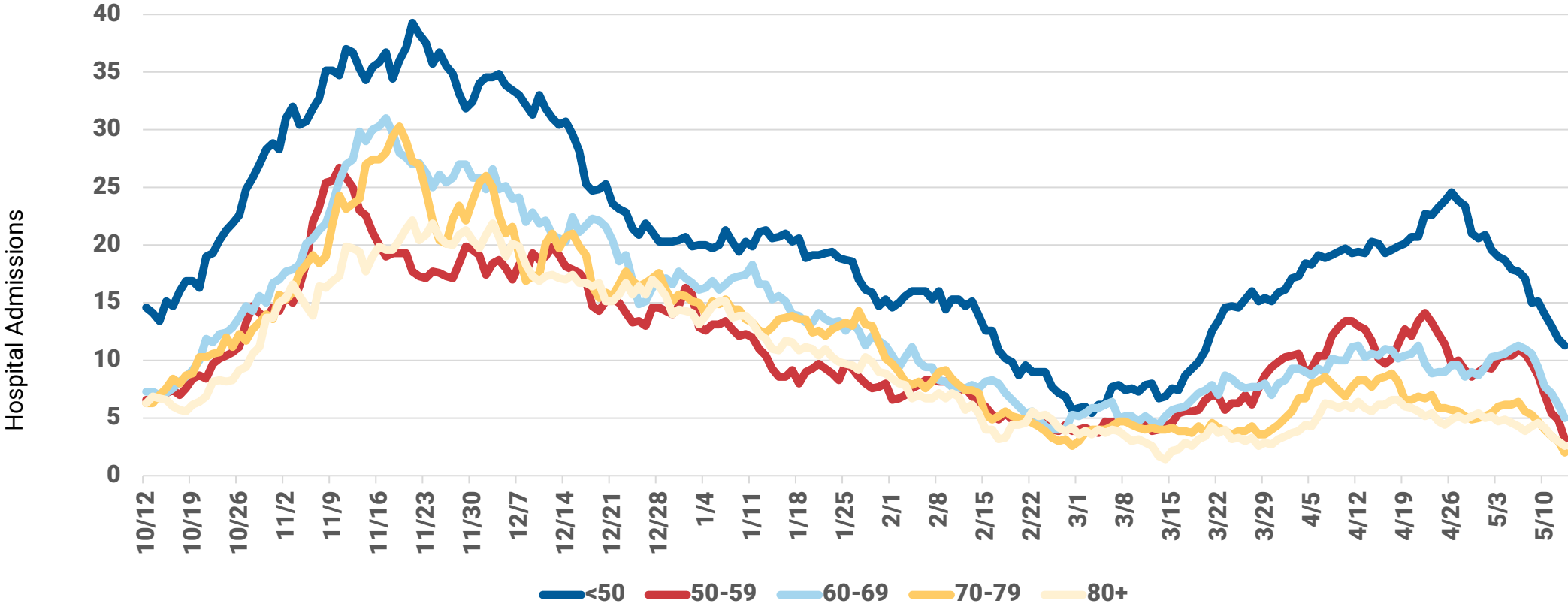
Month	Year	Hospital Admits frequency	Cumulative frequency
March	2020	1,652	1,652
April	2020	4,859	6,511
May	2020	3,250	9,761
June	2020	966	10,727
July	2020	764	11,491
August	2020	785	12,276
September	2020	752	13,028
October	2020	1,744	14,772
November	2020	3,732	18,504
December	2020	3,006	21,510
January	2021	2,061	23,571
February	2021	973	24,544
March	2021	983	25,527
April	2021	1,620	27,147
May	2021	530	27,677

Hospitalizations are reported to CDPH by hospitals into I-NEDSS and ESSENCE and self-reported by patients via an online survey. Daily counts for most recent dates displayed are likely incomplete. Cases who are not indicated to have been hospitalized across any of the three data sources are assumed to not have been hospitalized. Six records with hospital admit dates from January and February 2020 are excluded from this chart. Peak daily admissions based on rolling 7-day average.

Hospital admissions are declining in all older age groups.



COVID-19 hospital admits, on Specimen Date, by Age Group with finer distinctions amongst oldest strata, rolling 7-day average

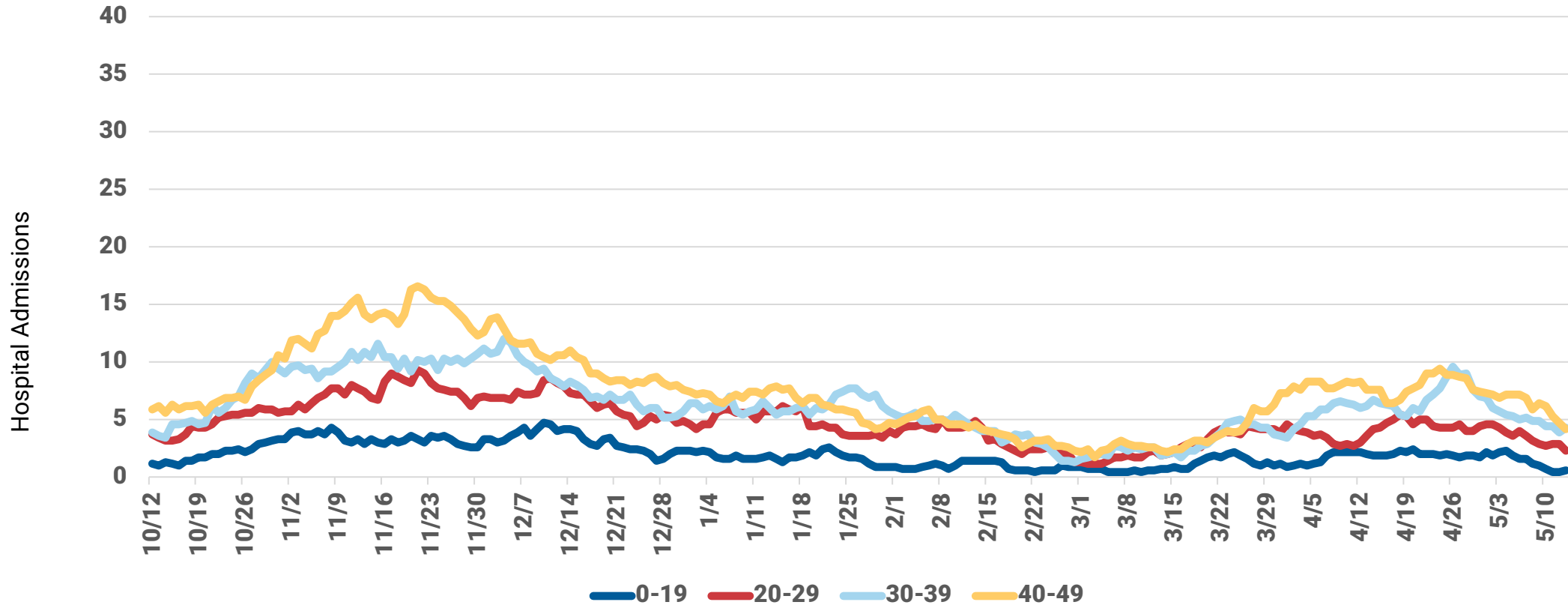


Hospitalizations are reported to CDPH by hospitals into I-NEDSS and ESSENCE and self-reported by patients via an online survey. Daily counts for most recent dates displayed are likely incomplete. Cases who are not indicated to have been hospitalized across any of the three data sources are assumed to not have been hospitalized. Six records with hospital admit dates from January and February 2020 are excluded from this chart. Peak daily admissions based on rolling 7-day average.

Hospital admissions are declining in the younger age groups.



COVID-19 Cases, on Specimen Date, by Younger Age Group, rolling 7-day average

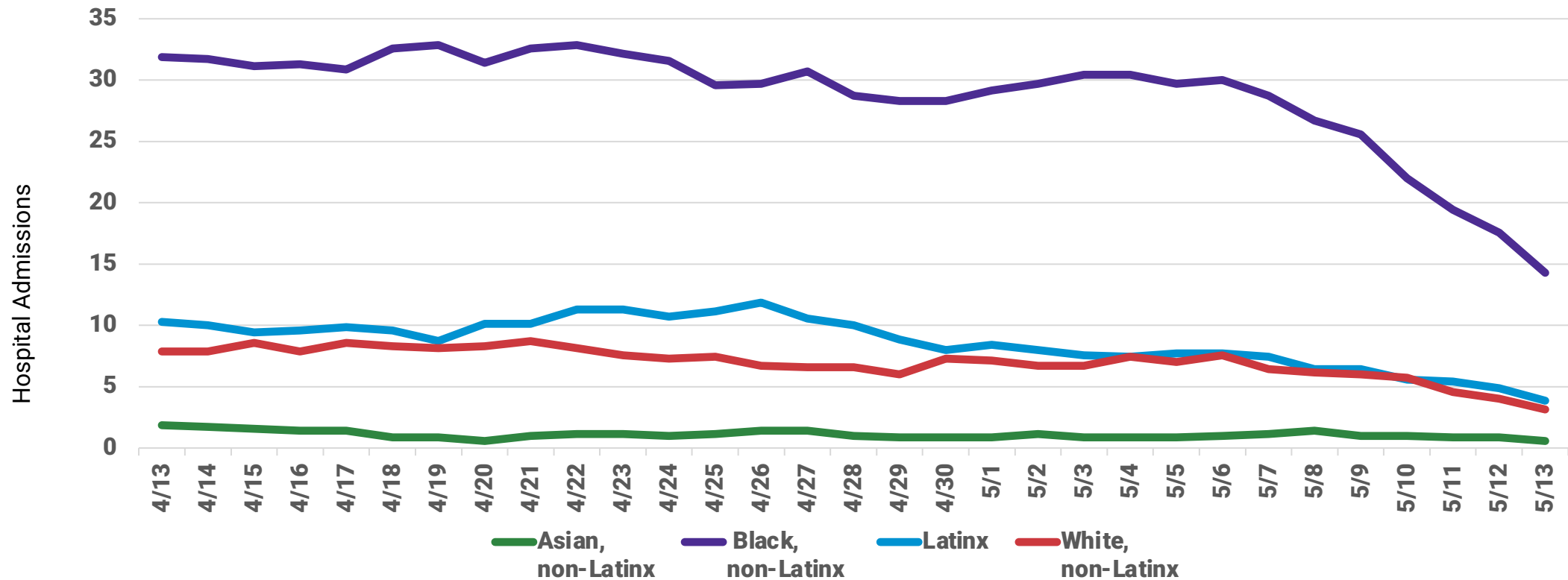


Hospitalizations are reported to CDPH by hospitals into I-NEDSS and ESSENCE and self-reported by patients via an online survey. Daily counts for most recent dates displayed are likely incomplete. Cases who are not indicated to have been hospitalized across any of the three data sources are assumed to not have been hospitalized. Six records with hospital admit dates from January and February 2020 are excluded from this chart. Peak daily admissions based on rolling 7-day average.

Daily COVID-19 hospital admissions are highest and declining fastest for Black, non-Latinx Chicagoans.



COVID-19 Hospital Admissions, by Race/Ethnicity, rolling 7-day average, first known hospital admit date



Hospitalizations are reported to CDPH by hospitals into I-NEDSS and ESSENCE and self-reported by patients via an online survey. Daily counts for most recent dates displayed are likely incomplete. Cases who are not indicated to have been hospitalized across any of the three data sources are assumed to not have been hospitalized. Six records with hospital admit dates from January and February 2020 are excluded from this chart. Peak daily admissions based on rolling 7-day average.

Recent COVID-19 hospitalizations by race/ethnicity and age group (Apr 18– May 15, 2021)

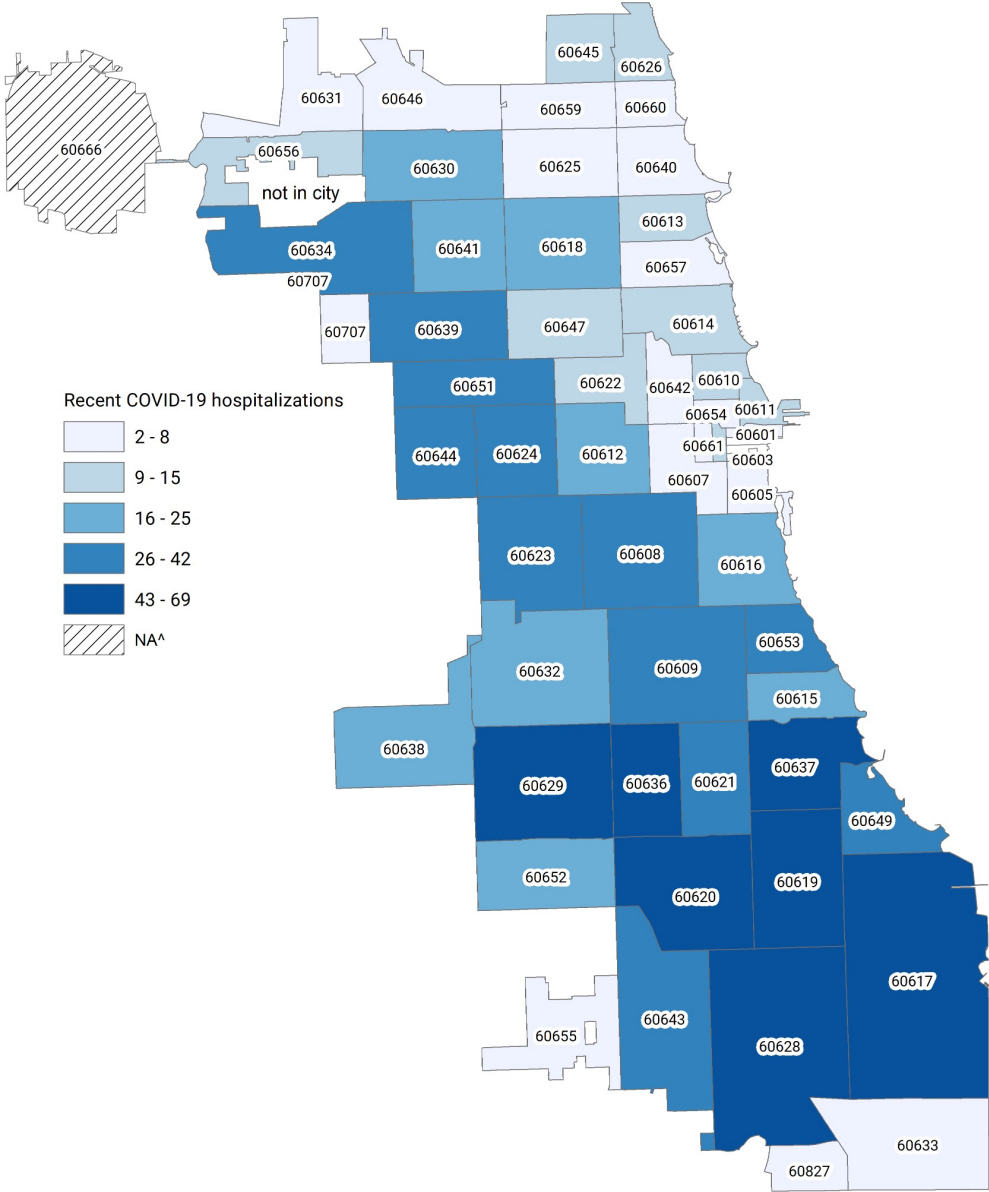
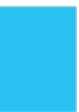


Age Group (years)	Latinx	% of Age grp	Black, NL	% of Age grp	White, NL	% of Age grp	Asian, NL	% of Age grp	Total	Percent
0-17	9	26%	22	65%	2	6%	1	3%	36	3%
18-44	64	20%	198	61%	46	14%	5	2%	344	30%
45-64	66	16%	279	67%	50	12%	12	3%	435	37%
65+	57	17%	198	60%	53	16%	4	1%	349	30%
Total	196	18%	697	63%	151	14%	22	2%	1,164	

Percentages are computed using COVID-19 hospitalizations with known race/ethnicity.

Data pulled Wednesday 5/19/21

Recent COVID-19 hospitalizations by Chicago zip code (Apr 18–May 15, 2021) n=1,164

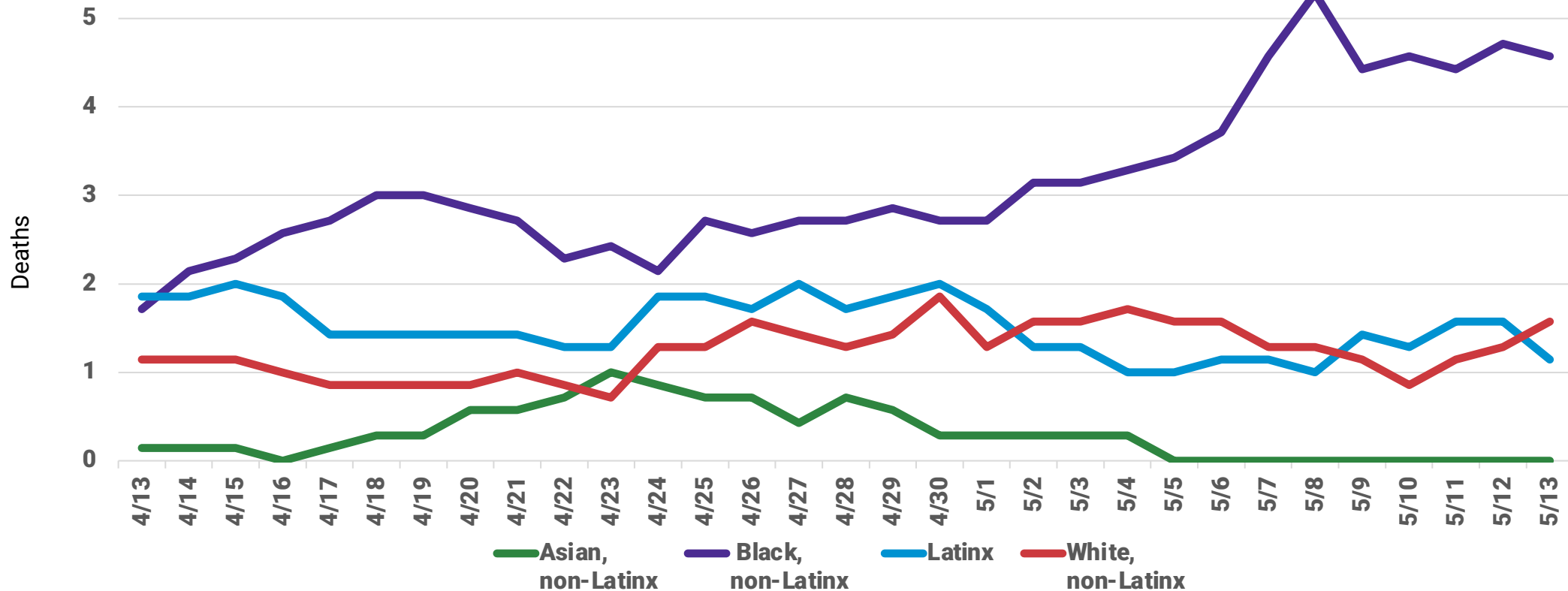


Please note that COVID-19 hospitalizations have significant reporting delays

Daily COVID-19 deaths are highest and rising for Black, non-Latinx.



COVID-19 Deaths, by Race/Ethnicity, rolling 7-day average



Daily COVID-19 deaths reported for Chicago residents with known death date. Data source: INEDSS. A five day lag is imposed to reduce inaccuracy created by reporting delays.

Recent COVID-19 deaths (Mar 14 – May 15, 2021) by race/ethnicity and age group

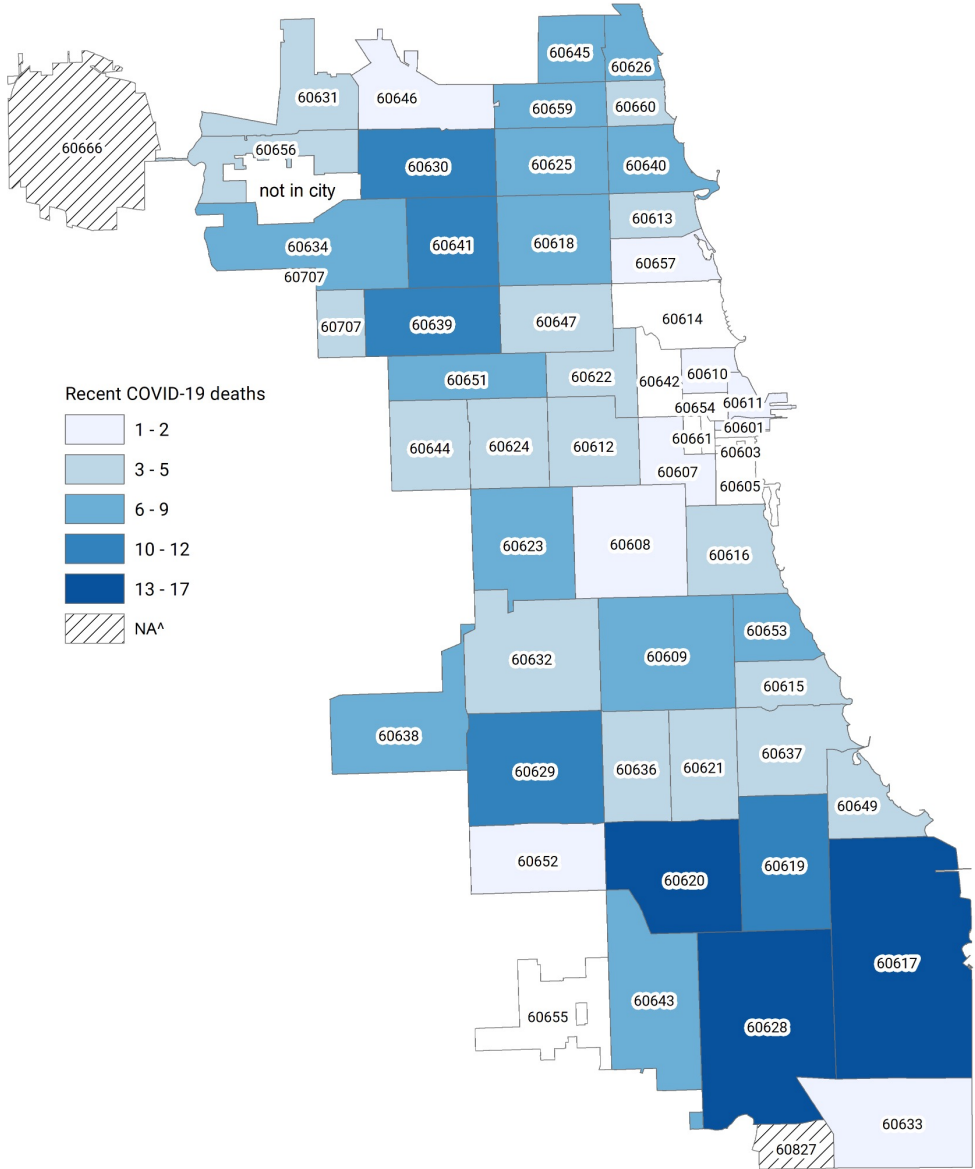


Age Group (years)	Latinx	% of Age grp	Black, NL	% of Age grp	White, NL	% of Age grp	Asian, NL	% of Age grp	Total	Percent
0-17	0	0%	0	0%	0	0%	0	0%	0	0%
18-44	7	41%	8	47%	1	6%	1	6%	17	6%
45-64	31	32%	47	48%	15	15%	5	5%	98	35%
65+	33	21%	77	48%	41	26%	6	4%	162	58%
Total	71	26%	132	48%	57	21%	12	4%	277	100%

Percentages are computed using COVID-19 hospitalizations with known race/ethnicity.

Data pulled Wednesday 5/19/21

Recent COVID-19 deaths (Mar 14 to May 15, 2021) by Chicago zip code (n=277)





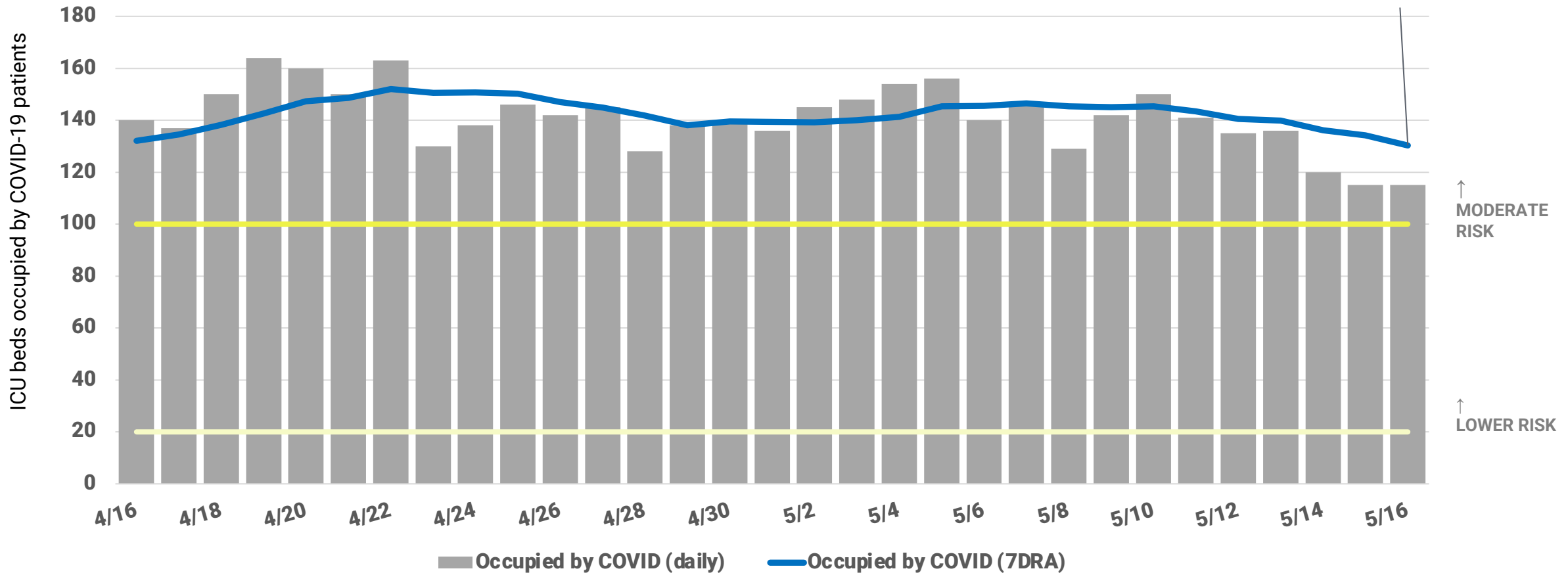
Hospital System Capacity

COVID-19 occupied ICU beds risk level is moderate.

Date	ICU Beds Occupied by COVID-19, 7DRA	ICU Bed Availability, 7DRA	Risk level
5/16/2021	130	22.9%	MODERATE



ICU beds occupied by COVID-19 patients, daily counts and 7 day average, daily occupancy census

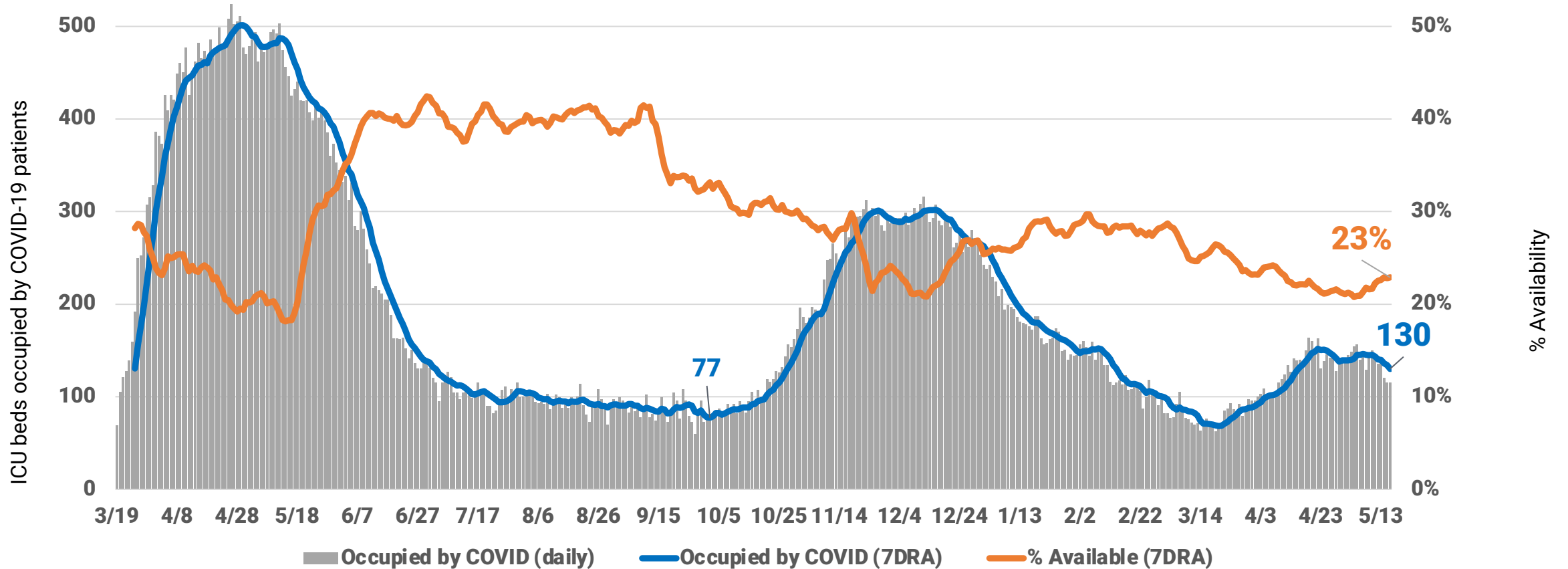


Includes all Chicago hospitals. Hospitals report daily to CDPH via EMResource, beginning March 19. ICU bed count includes all adult and pediatric ICU beds in Chicago hospitals. Includes Chicago and non-Chicago residents. Includes confirmed and suspected COVID-19 cases.

ICU availability and occupancy from COVID-19 varies.



ICU beds available and occupied by COVID-19 patients, daily counts and 7 day average, daily occupancy census

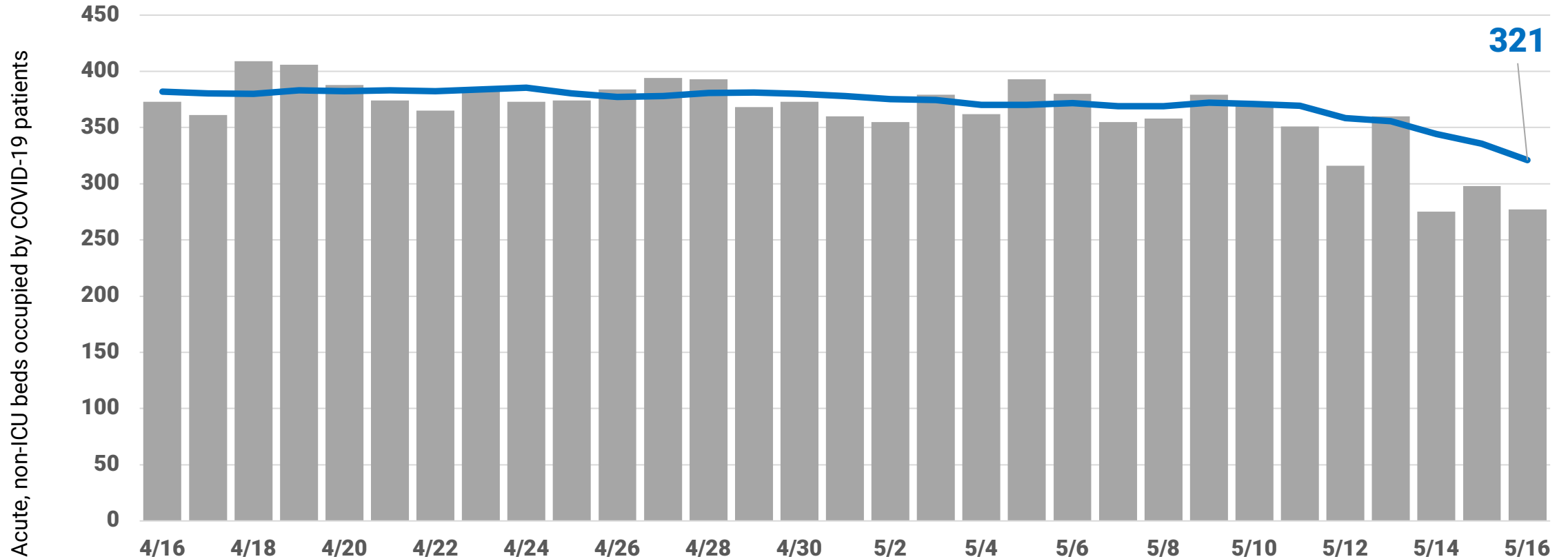


Includes all Chicago hospitals. Hospitals report daily to CDPH via EMResource, beginning March 19. ICU bed count includes all adult and pediatric ICU beds in Chicago hospitals. Includes Chicago and non-Chicago residents. Includes confirmed and suspected COVID-19 cases.

Acute, non-ICU bed census of COVID patients is flat.



COVID-19 acute/non-ICU beds occupied, daily counts and 7 day average, daily occupancy census

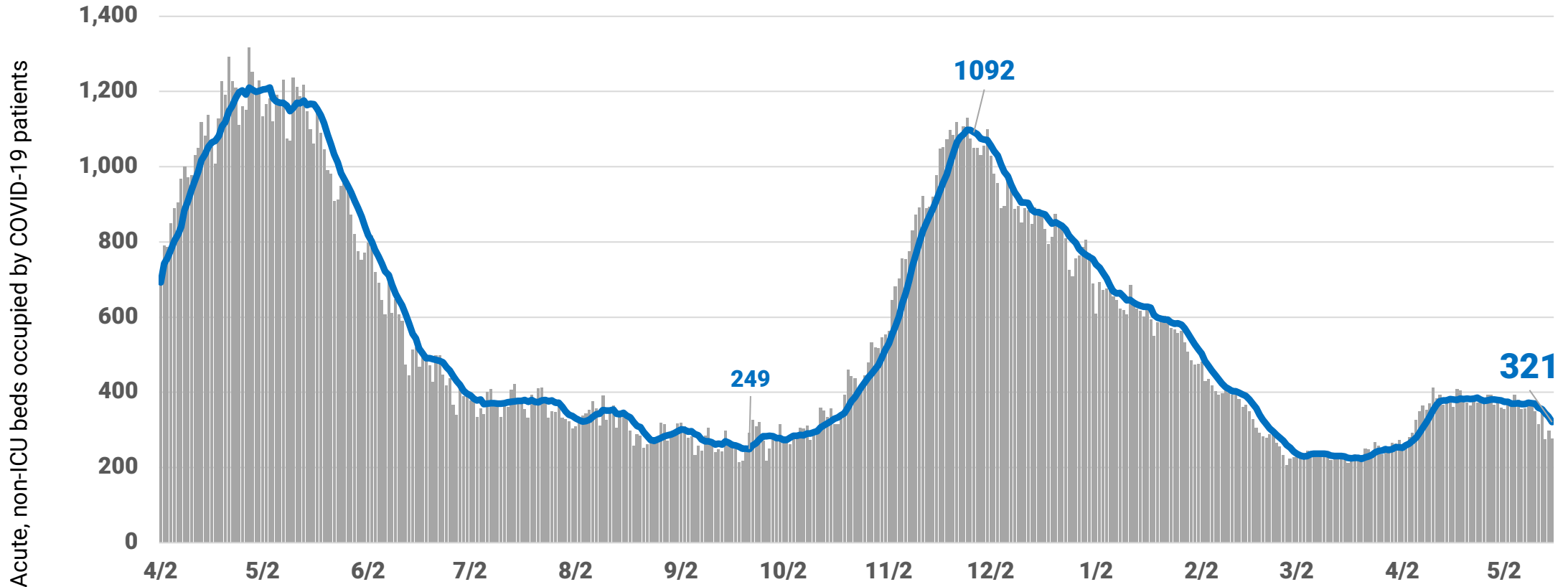


Includes all Chicago hospitals. Hospitals report daily to CDPH via EMResource, beginning March 19.. Includes Chicago and non-Chicago residents. Includes confirmed and suspected COVID-19 cases.

Acute, non-ICU bed census of COVID patients varies over time.



COVID-19 acute/non-ICU beds occupied, daily counts and 7 day average, daily occupancy census



Includes all Chicago hospitals. Hospitals report daily to CDPH via EMResource, beginning March 19.. Includes Chicago and non-Chicago residents. Includes confirmed and suspected COVID-19 cases.