

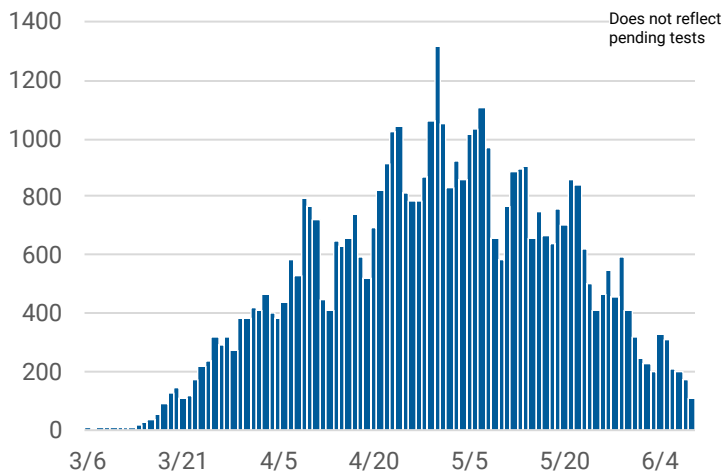


CHICAGO COVID-19 UPDATE

June 10, 2020

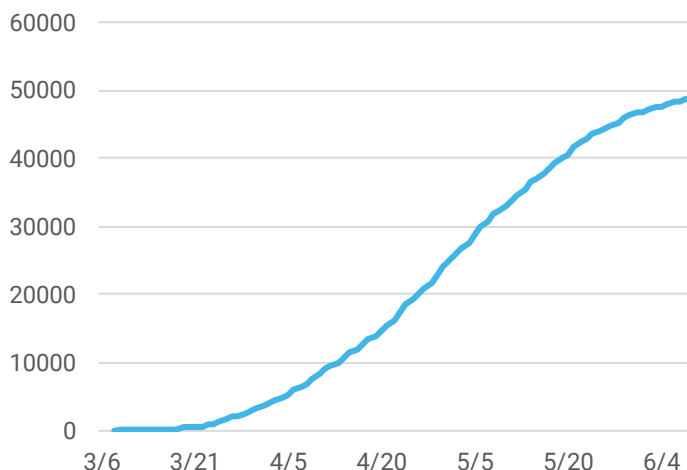
There are **48,725** cases of COVID-19 and **2,313** deaths among Chicago residents as of June 10, 2020. This is an increase of **140** cases and **7** deaths since yesterday.

Confirmed daily COVID-19 cases



Daily and cumulative coronavirus 2019 (COVID-19) cases reported for Chicago residents with known laboratory report date. Results for several previous days are updated each day. Note, there was one case of COVID-19 reported in January 2020 that is not included in the daily counts.

Confirmed cumulative COVID-19 cases



COVID-19 Morbidity and mortality by geography

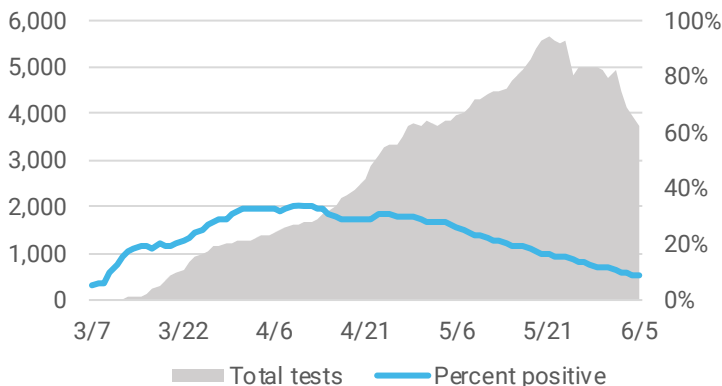
GEOGRAPHY	CASES ¹	DEATHS
Chicago	48,725	2,313
Illinois (IDPH link)	129,837	6,095
U.S. (CDC link)	1,973,797	112,133
World (WHO link)	7,145,539	408,025

¹Does not include persons with pending COVID-19 tests or persons with COVID-19 related illness who have not been tested.

As of June 10, 2020, there have been **268,544** tests performed. The 7-day average is **3,723** tests per day, with a percent positivity of **8.8%**.

Average daily COVID-19 testing

Number of tests performed and percentage of tests that were positive averaged over 7 days.



Molecular tests performed at state and private laboratories with known specimen collection date. Percent positivity is based on individuals tested. Tests performed between Jan 21 and Feb 29, 2020 are not included in graph. CDPH may not receive all non-positive results.

COVID-19 Case characteristics for Chicago residents

CHARACTERISTIC	NUMBER	% TOTAL CASES ¹	RATE PER 100,000
Chicago	48,725	100%	1,800.6
Age			
0-17	2,174	4.5%	396.0
18-29	8,754	18.0%	1,583.2
30-39	8,632	17.7%	1,891.7
40-49	8,923	18.3%	2,652.0
50-59	8,397	17.2%	2,683.0
60-69	5,969	12.2%	2,269.7
70+	5,853	12.0%	2,487.3
Under investigation	23	0.1%	-
Gender			
Female	24,012	49.3%	1,732.3
Male	23,697	48.6%	1,795.4
Under investigation	1,016	2.1%	-
Race-ethnicity²			
Latinx	17,985	48.0%	2,315.7
Black, non-Latinx	11,187	29.8%	1,426.4
White, non-Latinx	5,399	14.5%	599.9
Asian, non-Latinx	1,063	2.8%	591.1
Other, non-Latinx	1,854	4.9%	1,551.9
Under investigation	11,237	23.1%	-

²Race-ethnicity percentage is calculated among those with known race-ethnicity as reported by the medical provider.

COVID-19 Death characteristics for Chicago residents

CHARACTERISTIC	DEATHS	% TOTAL DEATHS	% DEATHS WITHIN GROUP	RATE PER 100,000 POP
Chicago	2,313	100%	4.7%	85.5
Age				
0-17	1	0.0%	0.0%	0.2
18-29	15	0.6%	0.2%	2.7
30-39	56	2.4%	0.7%	12.3
40-49	120	5.2%	1.3%	35.7
50-59	247	10.7%	2.9%	78.9
60-69	501	21.7%	8.4%	190.5
70+	1,373	59.4%	23.5%	583.5
Gender				
Female	931	40.3%	3.9%	67.2
Male	1,381	59.7%	5.8%	104.6
Under investigation	1	0.0%	0.0%	-
Race-ethnicity²				
Latinx	702	30.6%	3.9%	90.4
Black, non-Latinx	1,025	44.7%	9.2%	130.7
White, non-Latinx	439	19.1%	8.1%	48.8
Asian, non-Latinx	110	4.8%	10.3%	61.2
Other, non-Latinx	19	0.8%	1.0%	15.9
Under investigation	18	0.8%	0.2%	-

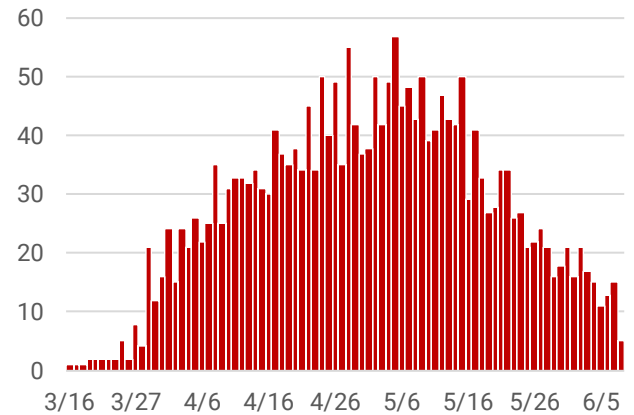
²Race-ethnicity percentage is calculated among those with known race-ethnicity as reported by the medical provider.

Underlying chronic conditions among Chicago residents who died from COVID-19

CHARACTERISTIC	NUMBER	% OF KNOWN
Known medical history	2,257	-
Underlying chronic conditions ³	2,080	92.2%
No underlying chronic conditions	177	7.8%
Under investigation	56	-

³Cases with at least one underlying chronic condition. Most common underlying conditions include diabetes, hypertension, and lung disease.

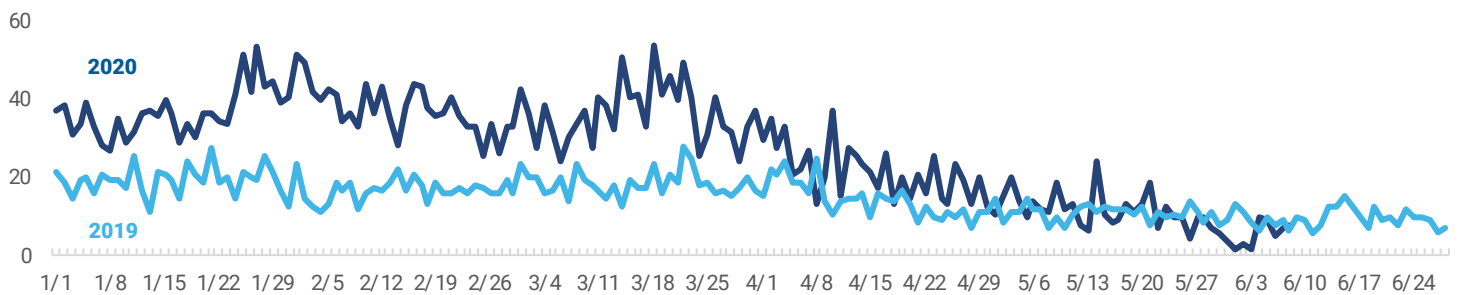
Daily COVID-19 deaths



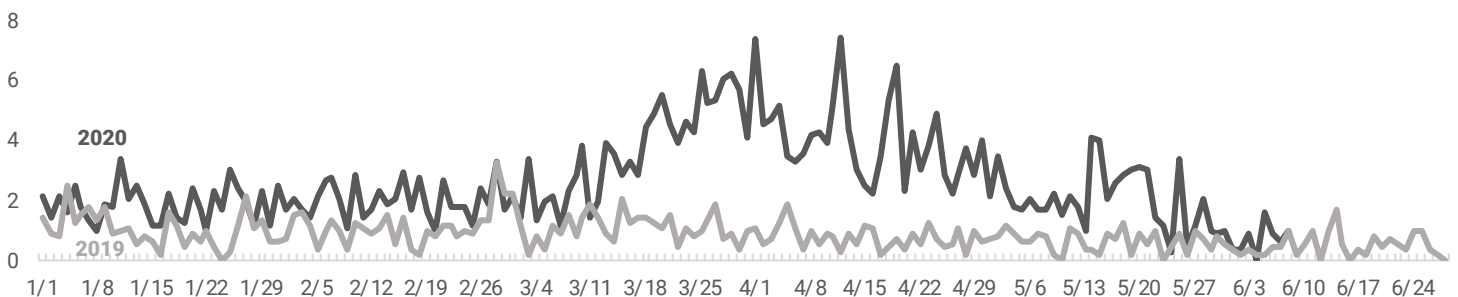
Chicago resident coronavirus 2019 (COVID-19) cases who have died, by date of death. Results for several previous days are updated each day.

COVID-19 symptoms are similar to those of influenza, so monitoring influenza-like illness (ILI) may also help identify COVID-19. ILI activity in 2020 that is higher than what was experienced in 2019 could indicate the presence of COVID-19 in the community.

Percent of daily emergency department (ED) visits due to influenza-like illness in Chicago among all age groups, 2020 vs. 2019



Percent of daily emergency department (ED) visits due to influenza-like illness in Chicago among persons aged 65+, 2020 vs. 2019



Percent of daily emergency department visits attributed to influenza-like illness for Chicago zip codes based on chief complaint submitted to ESSENCE.