

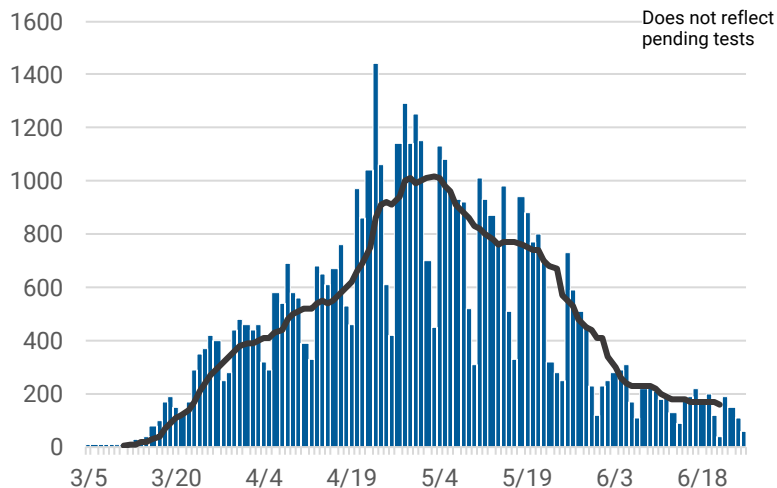


# CHICAGO COVID-19 UPDATE

June 26, 2020

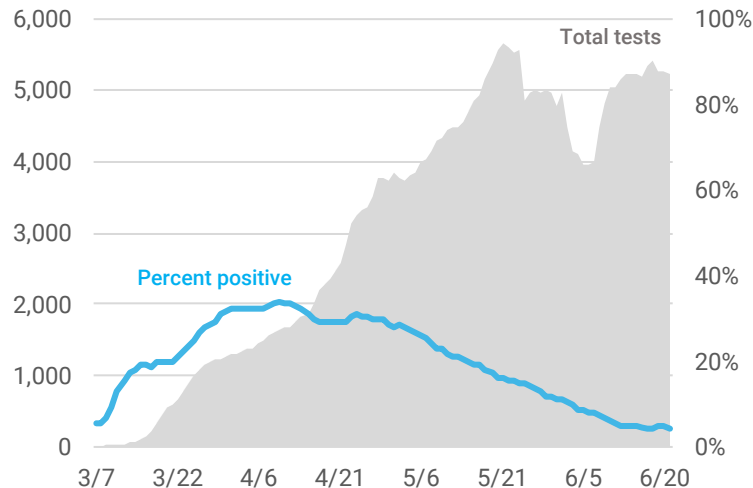
There are **51,512** cases of COVID-19 and **2,573** deaths among Chicago residents as of June 26, 2020. There are an average of **164** new cases and **14** deaths every day. An estimated **46,693** residents have recovered.<sup>1</sup>

Confirmed daily COVID-19 cases and 7-day rolling average



Daily COVID-19 cases reported for Chicago residents with known specimen collection date. Results for several previous days are updated each day. Two cases with specimen collection dates prior to March 1, 2020 are not included in the graph.

COVID-19 testing and percent positivity, 7-day rolling average



Number of tests performed and percentage of tests that were positive averaged over 7 days. Includes molecular tests performed at state and private laboratories with known specimen collection date. Percent positivity is based on individuals tested. Tests performed between Jan 21 and Feb 29, 2020 are not included in graph. CDPH may not receive all non-positive results.

## COVID-19 Case characteristics for Chicago residents

CHARACTERISTIC	NUMBER	% TOTAL CASES <sup>2</sup>	RATE PER 100,000
<b>Chicago</b>	<b>51,512</b>	<b>100%</b>	<b>1,903.6</b>
<b>Age</b>			
0-17	2,427	4.7%	442.1
18-29	9,505	18.5%	1,719.0
30-39	9,106	17.7%	1,995.5
40-49	9,322	18.1%	2,770.6
50-59	8,786	17.1%	2,807.3
60-69	6,258	12.1%	2,379.5
70+	6,094	11.8%	2,589.7
Under investigation	14	0.0%	-
<b>Gender</b>			
Female	25,543	49.6%	1,842.8
Male	25,003	48.5%	1,894.3
Under investigation	966	1.9%	-
<b>Race-ethnicity<sup>3</sup></b>			
Latinx	19,331	47.7%	2,489.0
Black, non-Latinx	12,017	29.7%	1,532.3
White, non-Latinx	5,858	14.5%	650.9
Asian, non-Latinx	1,127	2.8%	626.7
Other, non-Latinx	2,188	5.3%	1,831.5
Under investigation	10,991	21.3%	-

As of June 26, 2020, there have been **354,594** tests performed. The **7-day** average is **5,228** tests per day, with a percent positivity of **4.5%**.

## COVID-19 Morbidity and mortality by geography

GEOGRAPHY	CASES <sup>2</sup>	DEATHS
<b>Chicago</b>	<b>51,512</b>	<b>2,573</b>
Suburban Cook County ( <a href="#">IDPH</a> )	37,557	1,951
Illinois ( <a href="#">IDPH</a> )	140,291	6,847
U.S. ( <a href="#">CDC</a> )	2,374,282	121,809
World ( <a href="#">WHO</a> )	9,473,214	484,249

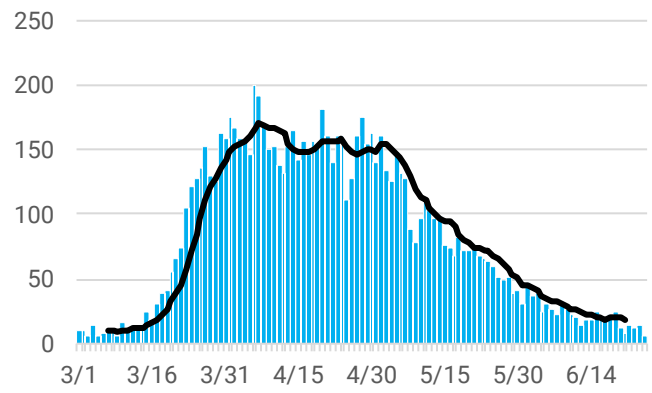
<sup>1</sup> Recovered is an estimate based on 14 days post diagnosis for people not hospitalized or 30 days post hospitalization for people hospitalized among those who have not died.  
<sup>2</sup> Does not include persons with pending COVID-19 tests or persons with COVID-19 related illness who have not been tested.  
<sup>3</sup> Race-ethnicity percentage is calculated among those with known race-ethnicity as reported by the medical provider.

## COVID-19 Death characteristics for Chicago residents

CHARACTERISTIC	DEATHS	% TOTAL DEATHS	% DEATHS WITHIN GROUP	RATE PER 100,000 POP
<b>Chicago</b>	<b>2,573</b>	<b>100%</b>	<b>5.0%</b>	<b>95.1</b>
<b>Age</b>				
0-17	2	0.1%	0.1%	0.4
18-29	18	0.7%	0.2%	3.3
30-39	64	2.5%	0.7%	14.0
40-49	133	5.2%	1.4%	39.5
50-59	286	11.1%	3.3%	91.4
60-69	560	21.7%	8.9%	212.9
70+	1,510	58.7%	24.8%	641.7
<b>Gender</b>				
Female	1,048	40.7%	4.1%	75.6
Male	1,525	59.3%	6.1%	115.5
Under investigation	0	0%	0%	-
<b>Race-ethnicity<sup>3</sup></b>				
Latinx	814	31.8%	4.2%	104.8
Black, non-Latinx	1,117	43.6%	9.3%	142.4
White, non-Latinx	492	19.2%	8.4%	54.7
Asian, non-Latinx	119	4.6%	10.6%	66.2
Other, non-Latinx	21	0.8%	1.0%	17.6
Under investigation	10	0.4%	0.1%	-

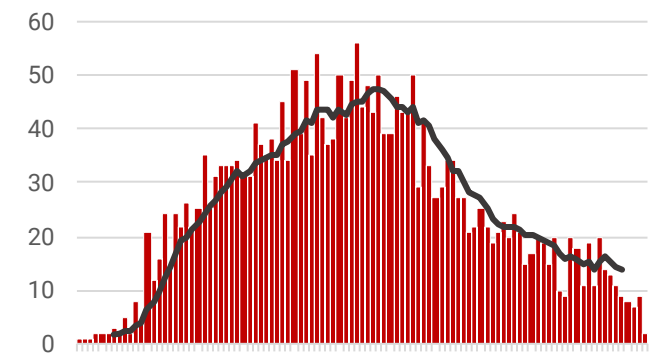
<sup>3</sup>Race-ethnicity percentage is calculated among those with known race-ethnicity as reported by the medical provider.

Daily COVID-19 hospitalizations and 7-day rolling average



Chicago resident COVID-19 cases who have been hospitalized, by date of first hospitalization. Results for several previous days are updated each day.

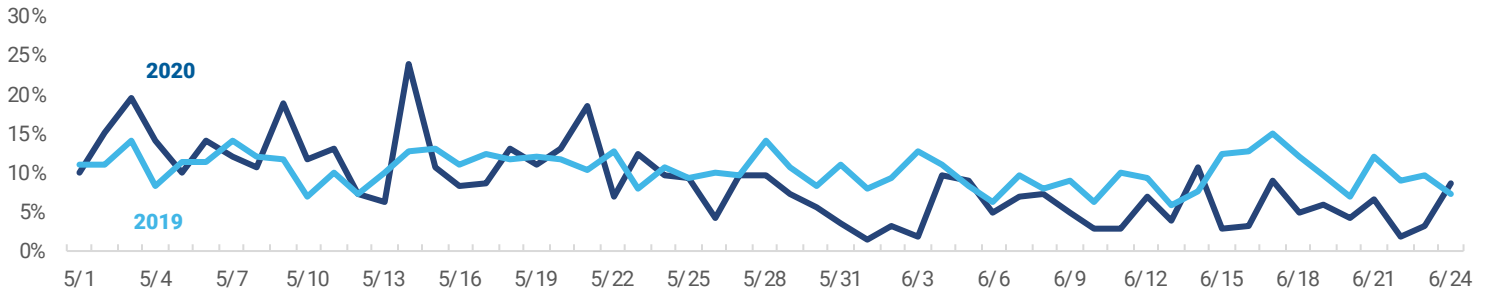
Daily COVID-19 deaths and 7-day rolling average



Chicago resident COVID-19 cases who have died, by date of death. Results for several previous days are updated each day.

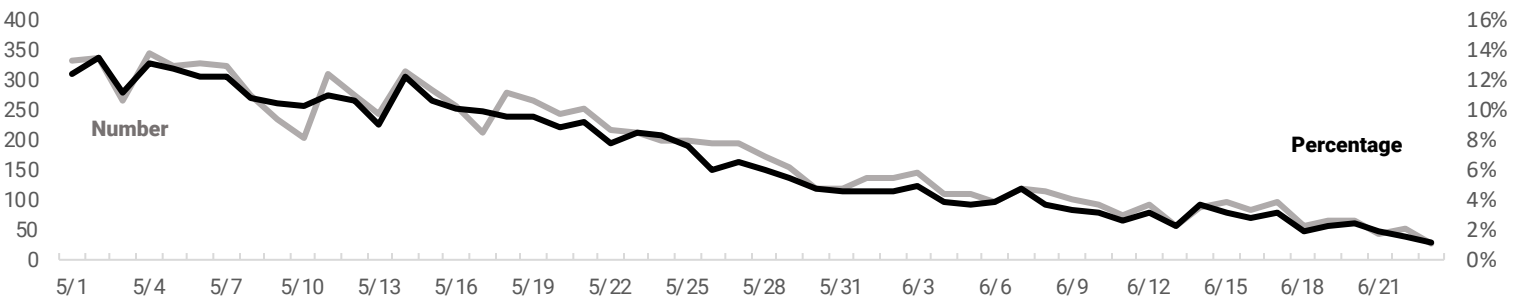
COVID-19 symptoms are similar to those of influenza, so monitoring influenza-like illness (ILI) may also help identify COVID-19. ILI activity in 2020 that is higher than what was experienced in 2019 could indicate the presence of COVID-19 in the community.

### Percentage of daily emergency department (ED) visits due to influenza-like illness (ILI) in Chicago, 2020 vs. 2019



COVID-19-like illness (CLI) is a new tool used to help track trends in COVID-19 activity. An increase in the number and percentage of ER visits due to CLI could indicate an increase in COVID-19 activity in the community.

### Number and percentage of daily emergency department (ED) visits due to COVID-19-like illness (CLI) in Chicago, 2020



Percentage of daily emergency department visits attributed to ILI and CLI for Chicago zip codes based on chief complaint submitted to ESSENCE.