

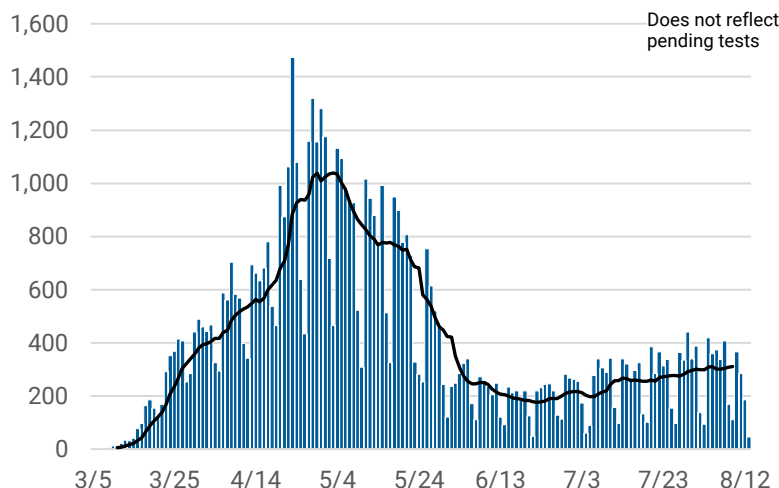


CHICAGO COVID-19 UPDATE

August 14, 2020

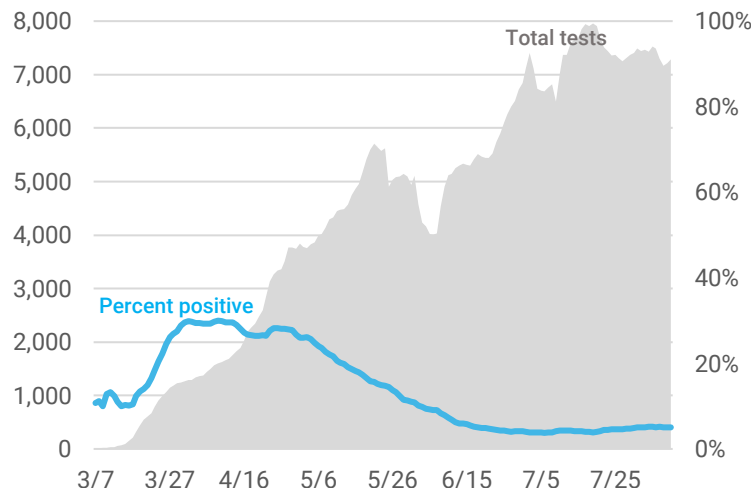
There are **65,481** cases of COVID-19 and **2,822** deaths among Chicago residents as of August 14, 2020. There are an average of **311** new cases and **3** deaths every day. An estimated **59,099** residents have recovered.¹

Confirmed daily COVID-19 cases and 7-day rolling average



Daily COVID-19 cases reported for Chicago residents with known specimen collection date. Results for several previous days are updated each day. Two cases with specimen collection dates prior to March 1, 2020 are not included in the graph.

COVID-19 testing and percent positivity, 7-day rolling average



Number of tests performed and percentage of tests that were positive averaged over 7 days. Includes molecular tests performed at state and private laboratories with known specimen collection date. Percent positivity is based on number of tests. Tests performed between Jan 21 and Feb 29, 2020 are not included in graph. CDPH may not receive all non-positive results.

COVID-19 Case characteristics for Chicago residents

| CHARACTERISTIC | NUMBER | % TOTAL CASES ² | RATE PER 100,000 |
|-----------------------------------|---------------|----------------------------|------------------|
| Chicago | 65,481 | 100% | 2,419.8 |
| Age | | | |
| 0-17 | 3,948 | 6.0% | 719.1 |
| 18-29 | 13,566 | 20.7% | 2,453.4 |
| 30-39 | 11,944 | 18.3% | 2,617.4 |
| 40-49 | 11,407 | 17.4% | 3,390.2 |
| 50-59 | 10,381 | 15.9% | 3,316.8 |
| 60-69 | 7,291 | 11.1% | 2,772.2 |
| 70+ | 6,932 | 10.6% | 2,945.6 |
| Under investigation | 12 | 0.0% | - |
| Gender | | | |
| Female | 32,877 | 50.2% | 2,371.9 |
| Male | 31,579 | 48.2% | 2,392.5 |
| Under investigation | 1,025 | 1.6% | - |
| Race-ethnicity³ | | | |
| Latinx | 24,998 | 47.1% | 3,218.6 |
| Black, non-Latinx | 15,502 | 29.2% | 1,976.6 |
| White, non-Latinx | 8,477 | 16.0% | 941.9 |
| Asian, non-Latinx | 1,411 | 2.7% | 784.5 |
| Other, non-Latinx | 2,634 | 5.0% | 2,204.5 |
| Under investigation | 12,459 | 19.0% | - |

As of August 14, 2020, there have been **715,535** tests performed. The **7-day** average is **7,285** tests per day, with a **percent positivity of 5.0%***.

*Please note: Beginning on 7/30/2020, percent positivity is calculated based on number of tests conducted rather than number of people tested, to align with IDPH practices.

COVID-19 Morbidity and mortality by geography

| GEOGRAPHY | CASES ² | DEATHS |
|---|--------------------|--------------|
| Chicago | 65,481 | 2,822 |
| Suburban Cook County (IDPH) | 49,240 | 2,129 |
| Illinois (IDPH) | 202,691 | 7,721 |
| U.S. (CDC) | 5,228,817 | 166,317 |
| World (WHO) | 20,730,456 | 751,154 |

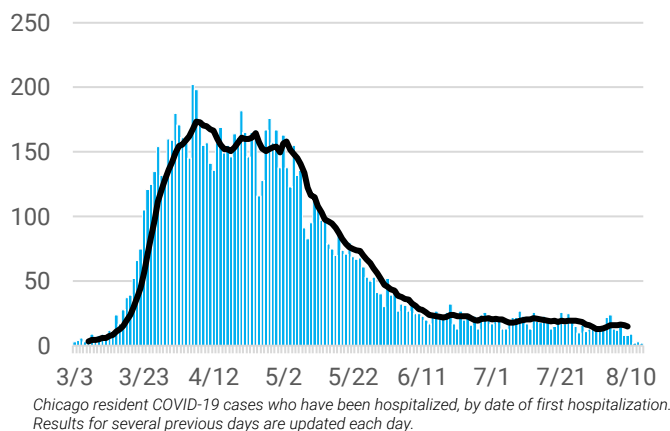
¹ Recovered is an estimate based on 14 days post diagnosis for people not hospitalized or 30 days post hospitalization for people hospitalized among those who have not died.
² Does not include persons with pending COVID-19 tests or persons with COVID-19 related illness who have not been tested.
³ Race-ethnicity percentage is calculated among those with known race-ethnicity as reported by the medical provider.

COVID-19 Death characteristics for Chicago residents

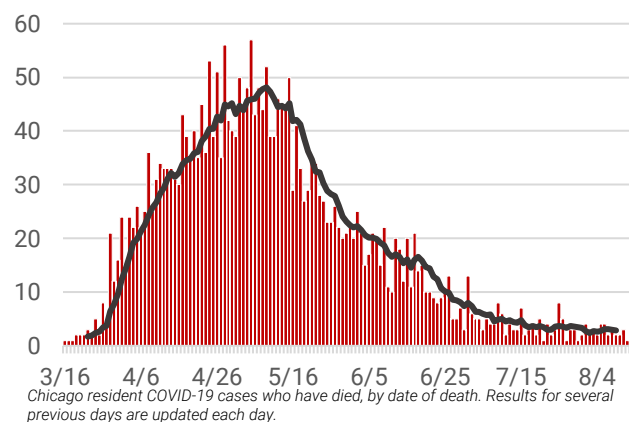
| CHARACTERISTIC | DEATHS | % TOTAL DEATHS | % DEATHS WITHIN GROUP | RATE PER 100,000 POP |
|-----------------------------------|--------------|----------------|-----------------------|----------------------|
| Chicago | 2,822 | 100% | 4.3% | 104.3 |
| Age | | | | |
| 0-17 | 2 | 0.1% | 0.1% | 0.4 |
| 18-29 | 21 | 0.7% | 0.2% | 3.8 |
| 30-39 | 68 | 2.4% | 0.6% | 14.9 |
| 40-49 | 154 | 5.5% | 1.4% | 45.8 |
| 50-59 | 314 | 11.1% | 3.0% | 100.3 |
| 60-69 | 618 | 21.9% | 8.5% | 235.0 |
| 70+ | 1,645 | 58.3% | 23.7% | 699.0 |
| Gender | | | | |
| Female | 1,165 | 41.3% | 3.5% | 84.0 |
| Male | 1,657 | 58.7% | 5.2% | 125.5 |
| Under investigation | 0 | 0% | 0% | - |
| Race-ethnicity³ | | | | |
| Latinx | 923 | 32.8% | 3.7% | 118.8 |
| Black, non-Latinx | 1,206 | 42.9% | 7.8% | 153.8 |
| White, non-Latinx | 537 | 19.1% | 6.3% | 59.7 |
| Asian, non-Latinx | 122 | 4.3% | 8.6% | 67.8 |
| Other, non-Latinx | 22 | 0.9% | 0.8% | 18.4 |
| Under investigation | 12 | 0.4% | 0.1% | - |

³Race-ethnicity percentage is calculated among those with known race-ethnicity as reported by the medical provider.

Daily COVID-19 hospitalizations and 7-day rolling average

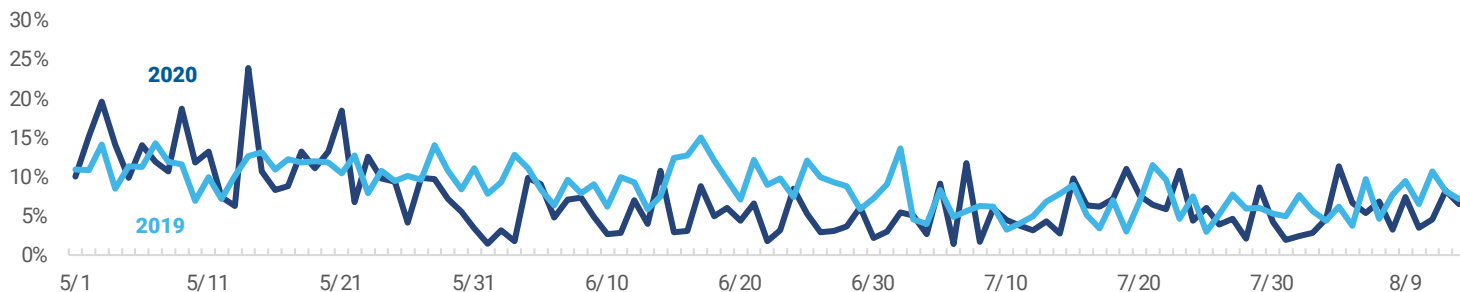


Daily COVID-19 deaths and 7-day rolling average



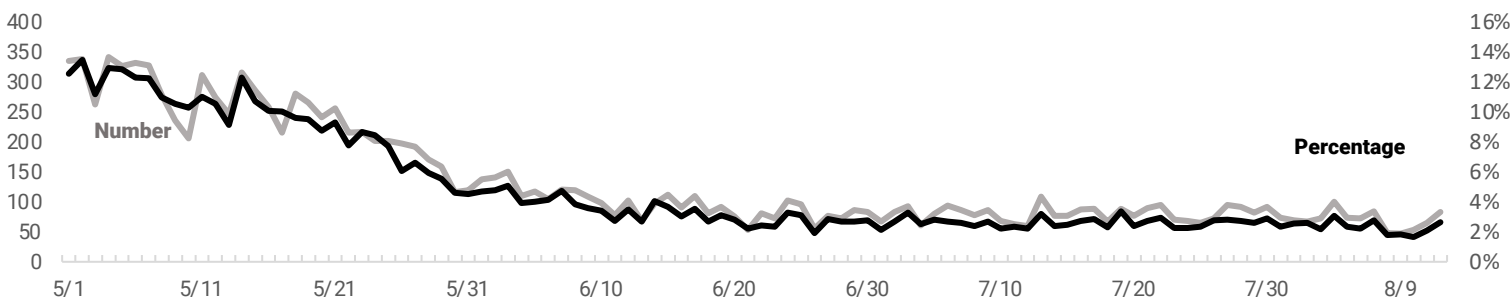
COVID-19 symptoms are similar to those of influenza, so monitoring influenza-like illness (ILI) may also help identify COVID-19. ILI activity in 2020 that is higher than what was experienced in 2019 could indicate the presence of COVID-19 in the community.

Percentage of daily emergency department (ED) visits due to influenza-like illness (ILI) in Chicago, 2020 vs. 2019



COVID-19-like illness (CLI) is a new tool used to help track trends in COVID-19 activity. An increase in the number and percentage of ER visits due to CLI could indicate an increase in COVID-19 activity in the community.

Number and percentage of daily emergency department (ED) visits due to COVID-19-like illness (CLI) in Chicago, 2020



Percentage of daily emergency department visits attributed to ILI and CLI for Chicago zip codes based on chief complaint submitted to ESSENCE.