



Pullman/Roseland/West Pullman Neighborhood Roundtable

August 3, 2021



Agenda

01 Welcome

02 General Updates

- NOF

03 Plan Updates

04 Open Discussion & Next Steps

General Updates

NEIGHBORHOOD OPPORTUNITY FUND

www.NeighborhoodOpportunityFund.com

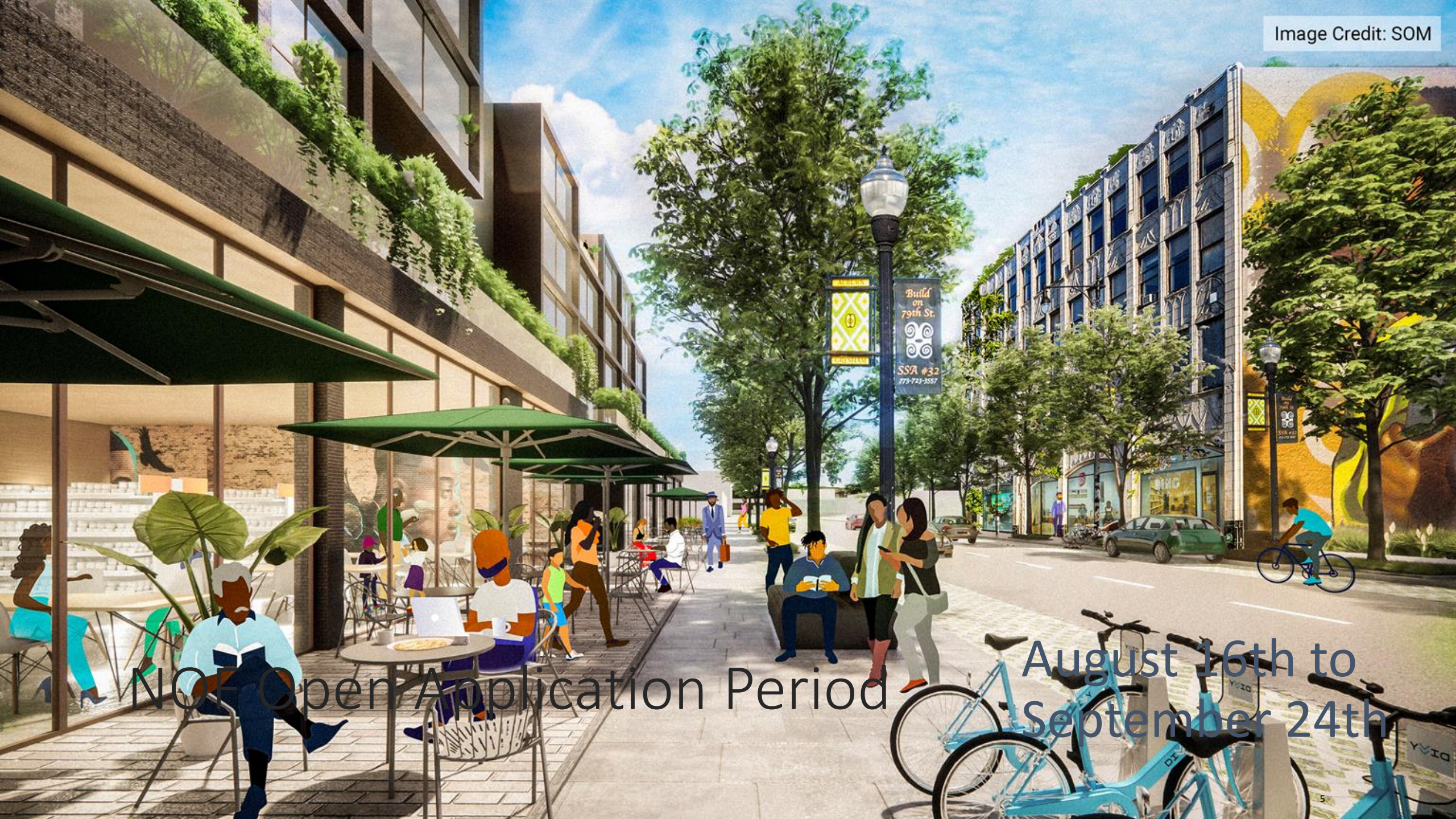
★ ★ ★ ★



Neighborhood Opportunity Fund

Small Grants Program





NOF Open Application Period

August 16th to September 24th

What is the Neighborhood Opportunity Fund?

1) Small Business Grant Up to \$250,000

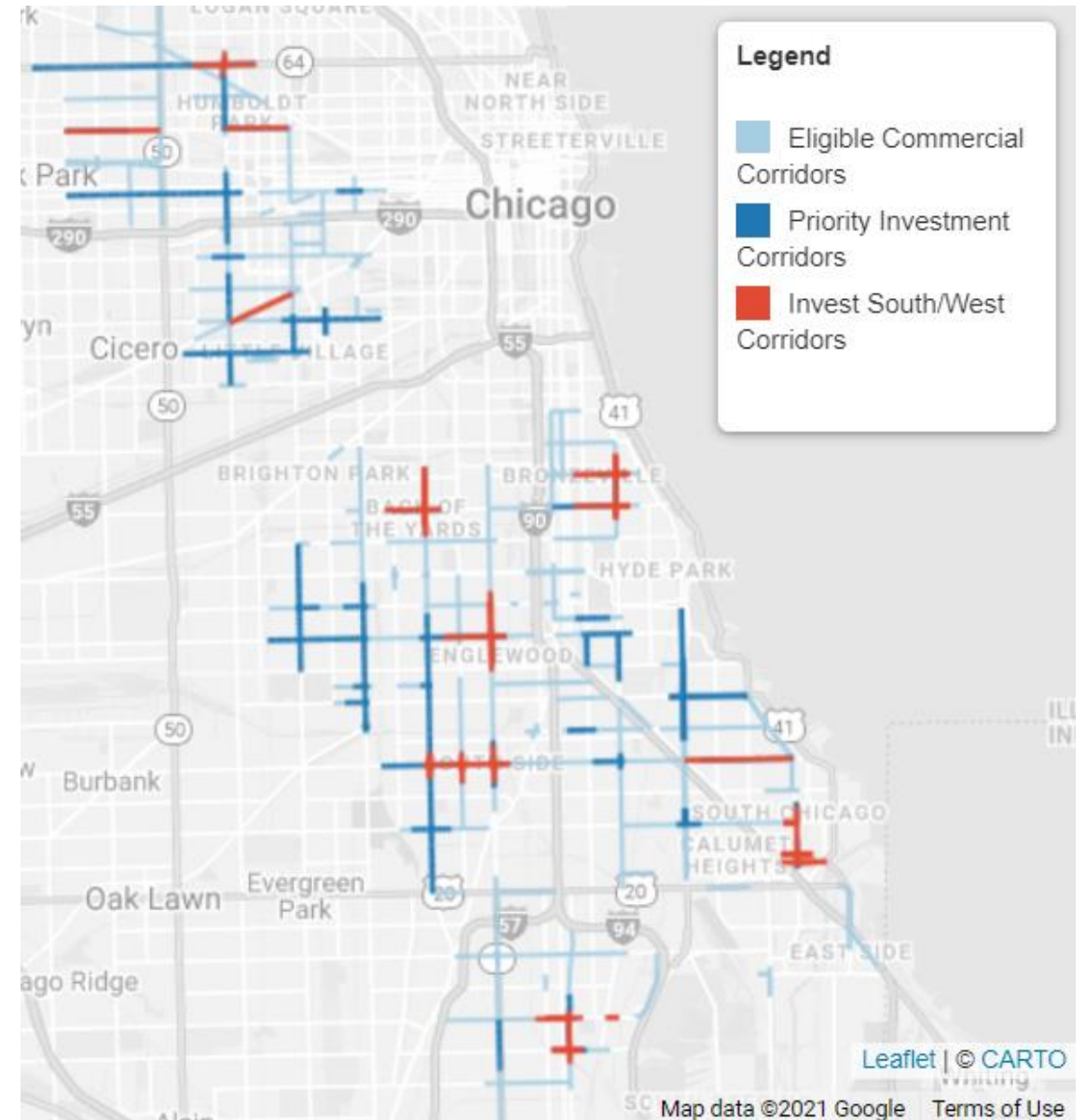
2) Technical Assistance Program Designed to Assist Applicants

- Support** Local entrepreneurs and small businesses
- Attract** Commercial businesses and cultural amenities
- Provide** Resources to ongoing economic development



Eligible, Priority and Invest South/West Corridors

- NOF Small Grant projects must be located on an eligible, priority or Invest South/West corridors.
- These corridors provide a strategic focus on location and ensure collective impact on commercial corridors.
- To verify whether a project is on one of these corridors, visit <http://Chicago.gov/nof>



Eligible NOF Applicants

- ✓ Commercial Property Owners
- ✓ Commercial Business Tenants
- ✓ Non-Profit organizations
- ✓ Located qualified investment area (QIA)



Shawn Michelle's Homemade Ice Cream, 46 E. 47th St., in Bronzeville, Feb. 11, 2021. (E. Jason Wambsgans / Chicago Tribune)

Types of Eligible Activity

- **Expansion or Renovation** of existing businesses
- **New locations** for start-up businesses of existing businesses
- **New construction**

Small Grants Track

- Grants up to \$250,000
- Competitive selection process based on application details
- Grantees are expected to complete their projects within 2 years

Large Grants Track

- Grants greater than \$250,000
- City Council approval required
- Grantees must meet M/WBE construction requirements as well as other conditions as stated in the project's redevelopment agreement (RDA)

What can NOF pay For?

Allowed

- ✓ improvements as part of a larger renovation
- ✓ Building acquisition*, demolition and environmental remediation
- ✓ Security measures
- ✓ Roofing, façade and mechanical system repairs
- ✓ Architectural and engineering fees
- ✓ HVAC, plumbing and electrical

Not Allowed

- ✗ Small Improvements (painting)
- ✗ Residential units or the residential portion of a mixed-use building
- ✗ Resolve code Violations City of Chicago's Building Code
- ✗ Operating expenses

Grantees are supported throughout the program

Technical Assistance Program – Lending coaches, architects, and construction managers have been marshalled to help support our awardees

Concierge Support – Our staff are poised to walk finalist through processes like building permits, city inspections, business licensing, etc.

Business Marketing– City recognition for completed projects via social media marketing, grand openings and ribbon cuttings

How To Apply



City of Chicago – City Hall
121 N. La Salle Street, 10th FL
Chicago, IL 60602
<https://Chicago.gov/dpd>



601 South LaSalle Street, Ste 510
Chicago, IL 60605
P: (312) 360 3300
F: (312) 757 4370
<https://somercor.com/>

nof@cityofchicago.org (Small Grants Track)
NOF-Large@cityofchicago.org (Large Grants Track)

<http://Chicago.gov/NOF>

Questions?

<http://Chicago.gov/NOF>

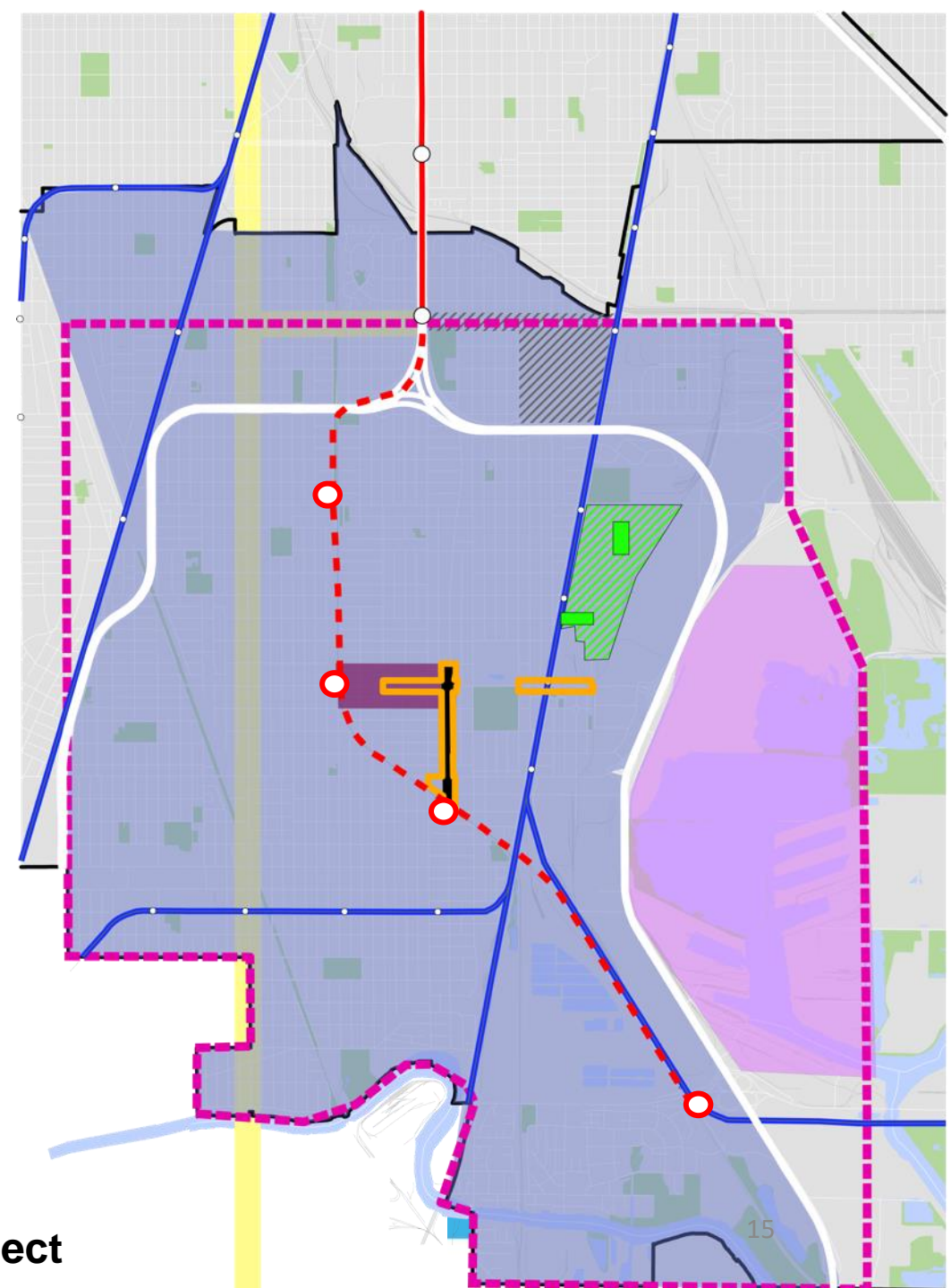
2021 Round 2 - Aug. 16th to Sept. 24th



Area Planning Updates

Current/Upcoming Plans

-  Far South Boundary
-  INVEST S/W Corridors
-  Red Line Extension (RLE)
-  RLE Transit-Supported Development Plan
-  Roseland Medical District Planning
-  Historic Preservation Study (Michigan Ave)
-  Chicago State University / 95th Street
-  Far South Chicago Coalition Quality of Life Plan
-  South Halsted Bus Corridor Enhancement Project
-  Illinois Port District Master Plan
-  Modern Metra Electric (Station Updates)
-  Community Economic Development Empowerment Project



Pullman Streetscape

ISW Pullman

- 111th St, Cottage Grove to Doty, Cottage Grove to MLK and Cottage Grove, 108th Street to 111th Street

Alderman Beale, Ward 9

Scope

- Roadway geometry and intersection improvements
- Full width resurfacing
- Drainage improvements
- Bike lanes
- Ped refuge islands
- Sidewalk, curb, and gutter
- Curb extensions
- ADA ramps and crosswalks
- Street lighting
- Traffic signal upgrades
- Improved pavement markings and signage
- Site furniture and potential seating areas
- Tree planting and potential landscaping

Funding

Source: State, State Rebuild, TIF & CIP Bond

Phase I/II Design and Construction

- \$10,850,000

Status

Design in progress

- Civiltech

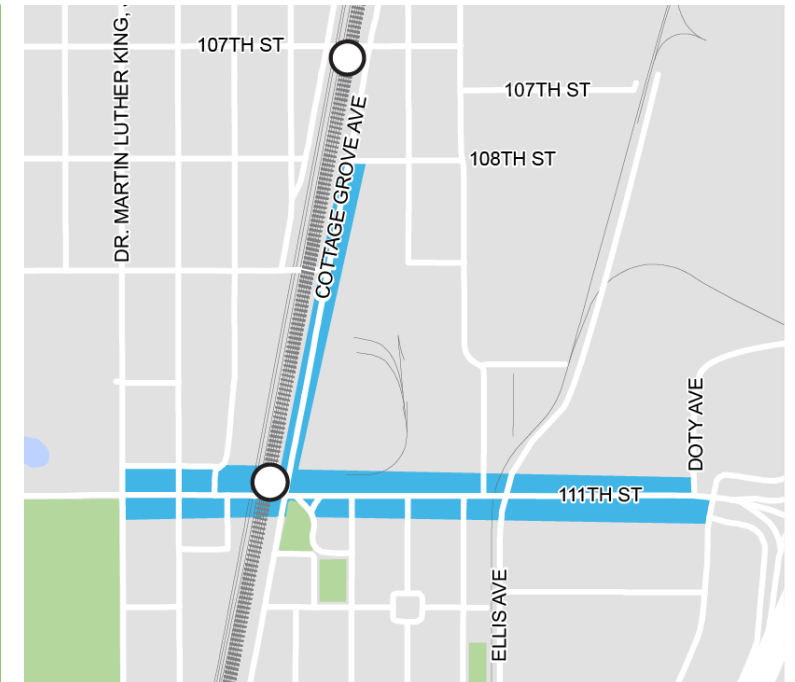
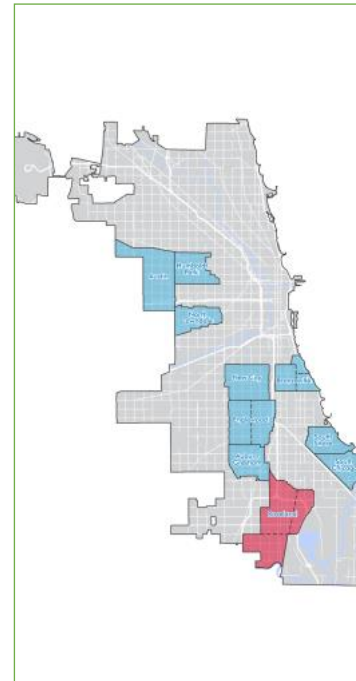
Schedule

Design Start

- In progress – Cottage Grove to Doty
- April 2021 – Cottage Grove to MLK and CG

Construction Start

- Est.Q4 2022 to 2024; 2 to 3 sections of construction



Roseland Streetscape

ISW Roseland

- Michigan, 110th Street to 116th Street and 111th Street, Edbrooke to Stewart

Alderman Beale, Ward 9 / Alderman Austin, Ward 34

Scope

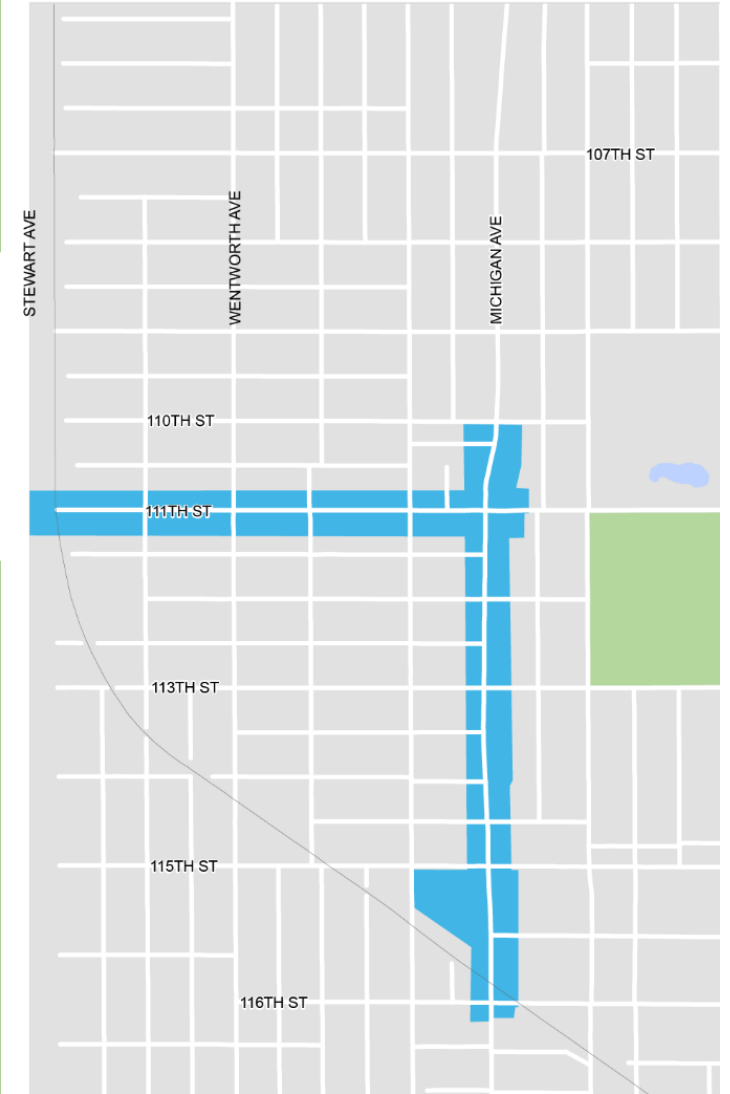
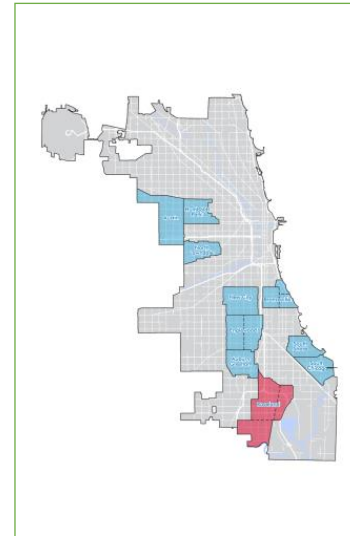
- Roadway geometry and intersection improvements
- Full width resurfacing
- Drainage improvements
- Sidewalk, curb, and gutter
- Curb extensions
- ADA ramps and crosswalks
- Street lighting
- Traffic signal upgrades
- Improved pavement markings and signage
- Side street improvements to the alleys as needed
- Site furniture and potential seating areas
- Light pole identifiers
- Gateway identifier
- Tree planting and potential landscaping
- Two pocket parks/plazas

Funding

- Source: State Rebuild & CIP Bond Phase II Design and Construction
- Est. \$19,550,000

Schedule

- Design Start
- July 2021
- Construction Start
- 2023 – 2025, 2 to 3 sections of construction



Combined Schedule

